

**Cabinet Office**  
**Area Plan for the East**  
**Proposals Map 8**  
**UNION MILLS / STRANG**

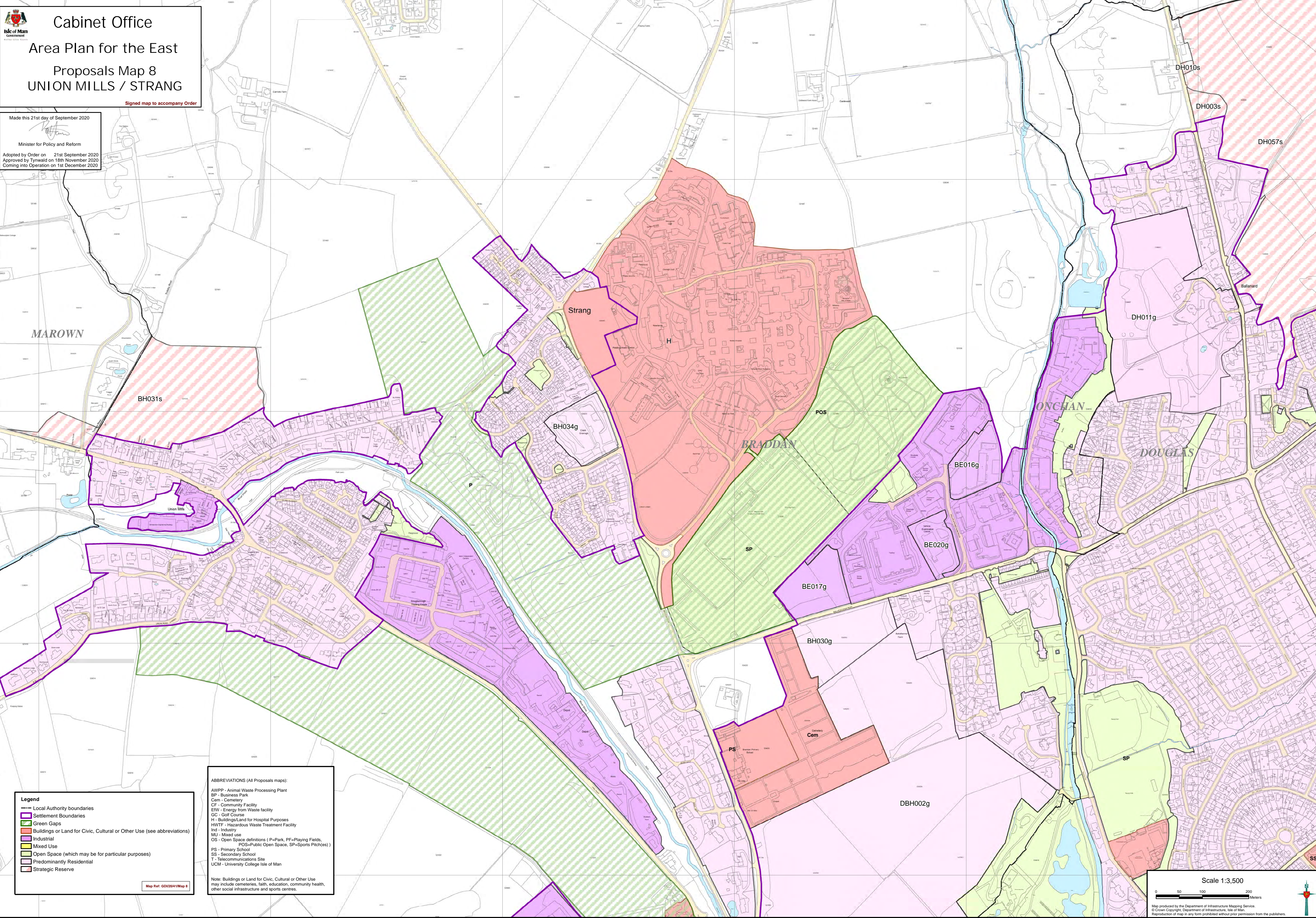
*Signed map to accompany Order*

Made this 21st day of September 2020

*[Signature]*

Minister for Policy and Reform

Adopted by Order on 21st September 2020  
 Approved by Tynwald on 18th November 2020  
 Coming into Operation on 1st December 2020



**Legend**

- Local Authority boundaries
- Settlement Boundaries
- Green Caps
- Buildings or Land for Civic, Cultural or Other Use (see abbreviations)
- Industrial
- Mixed Use
- Open Space (which may be for particular purposes)
- Predominantly Residential
- Strategic Reserve

Map Ref: GD/2014/Map 8

**ABBREVIATIONS (All Proposals maps):**

- AWPP - Animal Waste Processing Plant
- BP - Business Park
- Cem - Cemetery
- CF - Community Facility
- EW - Energy from Waste facility
- GC - Golf Course
- H - Buildings/Land for Hospital Purposes
- HWTF - Hazardous Waste Treatment Facility
- Ind - Industry
- MU - Mixed use
- OS - Open Space definitions (P=Park, PF=Playing Fields, POS=Public Open Space, SP=Sports Pitch(es))
- PS - Primary School
- SS - Secondary School
- T - Telecommunications Site
- UCM - University College Isle of Man

Note: Buildings or Land for Civic, Cultural or Other Use may include cemeteries, faith, education, community health, other social infrastructure and sports centres.

Scale 1:3,500

0 50 100 200 Meters

Map produced by the Department of Infrastructure Mapping Service.  
 © Crown Copyright, Department of Infrastructure, Isle of Man.  
 Reproduction of map in any form prohibited without prior permission from the publishers.