

Berried Females

It is illegal to take, land, sell or have in your possession, any crab or lobster that is berried, i.e. is carrying eggs that are developing. Berried crabs or lobsters **must be** returned to the water immediately.



V-notched Lobsters

Many commercial fishermen have volunteered to V-notch using a specific tool provided by the Department of Environment, Food and Agriculture. The notch in the tail lasts for two, or more, moults.

It is illegal to remove or take any lobster with either a notch in one or more tail fins, or with any damaged or missing tail fin.

Evidence from fisheries elsewhere indicates that V-notched lobsters form a protected population of breeding females that can improve recruitment to the stock, enhancing the fishery for everyone. If you catch a lobster that has any form of marking on its tail, or are in any doubt about this, please return it to the water.



The Department of Environment, Food and Agriculture (DEFA) would like to thank all recreational potters for submitting their Catch Returns. The information provided is invaluable to aiding understanding of the fishery and its management for the future.

Bye-laws/Regulations are in place in the Isle of Man to protect crab and lobster stocks. While some of these are specific to the commercial fishery, many apply to recreational potters as well. Please note that this leaflet is for guidance only, for detailed information please refer to the original legislation to be found at: <http://www.tynwald.org.im> - click on Library Services. The following legislation is relevant:

- *SEA-FISHERIES (LOBSTER AND CRAB ETC. LICENSING) BYE LAWS 2003*

- *SEA-FISHERIES (POSSESSION OF UNDERSIZED SEA-FISH) BYE-LAWS 2000*

- *SEA-FISHERIES (THREE-MILE AREA) (LOBSTER AND CRAB) BYE-LAWS 2011*

- *SEA FISHERIES (LICENSING) (RECREATIONAL CRAB AND LOBSTER) REGULATIONS 2022.*

The Bye-laws/Regulations set out the fines that can be imposed upon conviction for non compliance. Please read your

The Department of Environment Food and Agriculture
Thie Slieau Whallian
Foxdale Road, St John's
Isle of Man, IM4 3AS
Telephone: (01624) 685837 Fax: (01624) 685851
Email: fisheries@gov.im



www.gov.im/lobsterpotting



www.facebook.com/DEFAseafisheries

Issued May 2023



**Isle of Man
Government**

Keillys Ellan Vannin



Information for Recreational Crab and Lobster Fishermen

Recreational potters may fish up to five pots, the maximum catch per day is two lobsters (but no more than seven lobsters per week) and five crabs.

Recreational licences are issued per person and renewal is dependent on receipt of Catch Returns.

Recreational potters may not fish outside of the 0-3 nautical mile area.

Minimum Landing Sizes

Lobsters

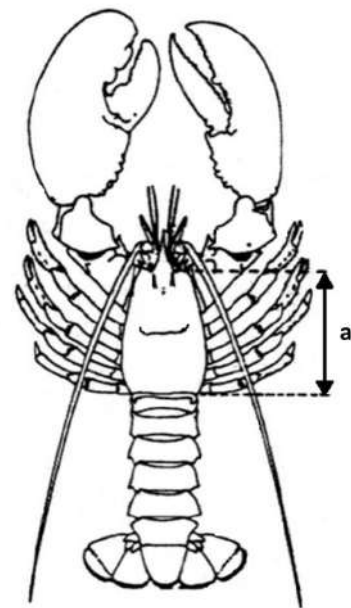
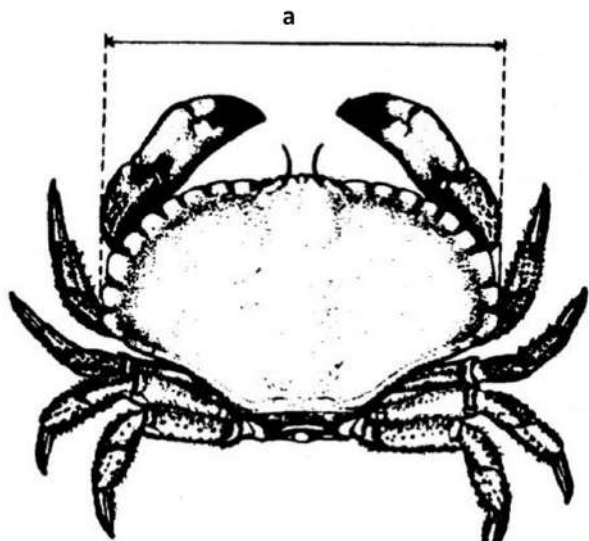
The Minimum Landing Size (MLS) for lobsters refers to the carapace length. The diagram opposite shows how to measure this, from the back of the eye socket to the very back of the carapace, or head section (a).

The minimum legal size limit is set to ensure that most lobsters have spawned at least once before they can be taken. The MLS is perhaps the most important conservation measure that we have in place to protect our stocks. Please ensure that you have a gauge on board to measure any lobster that you intend to keep. Any undersized lobster must be returned to the water immediately on capture and cannot be retained for measuring later.

The MLS for Lobster is 90mm carapace length.

Crabs

The MLS for crabs is 140mm across the width of the shell as shown in the diagram below (a).



Crab and lobster must be landed whole.
It is an offence to retain on board any part of a crab or lobster.

Marine Nature Reserves

There are a number of marine protected areas in Isle of Man territorial waters, including Marine Nature Reserves (MNRs). Static fishing gear (pots) are allowed, except in eelgrass conservation zones. Please note that there are eelgrass conservation zones in the following marine nature reserves: Baie Ny Carrickey, Langness, Laxey Bay and Ramsey Bay, maps for which are available online at <https://www.gov.im/categories/business-and-industries/commercialfishing/closed-or-restricted-area-maps/>

There is need to adhere to the Manx Marine Nature Reserve Byelaws 2018, which are also available online at <https://www.gov.im/media/1362727/manx-marinenature-reserves-byelaws-2018-sd-2018-0186.pdf>

Marking of Gear

All pots, whether set by commercial or hobby potters, **must have** marker buoys that are clearly marked with the **licence number**. Pots that are not marked will be confiscated by fisheries officers and the owner may be liable to prosecution.



Ropes

All ropes between marker buoys and pots, should be weighted to avoid floating on, or close to, the surface of the water. Floating ropes cause a hazard to other vessels and it can be disruptive and costly if a rope becomes entangled in a propeller and could endanger life.

Pot Tags and Escape Panels

Commercial potters must use pot tags, recreational potters do not need to do so.

All pots must have at least one unobstructed escape gap, located on the side of the lower half of the pot. It must be big enough to allow a rigid box shaped gauge (at least 78mm wide, 44mm high and 100mm long) to be inserted into the pot, whether the pot is wet or dry.