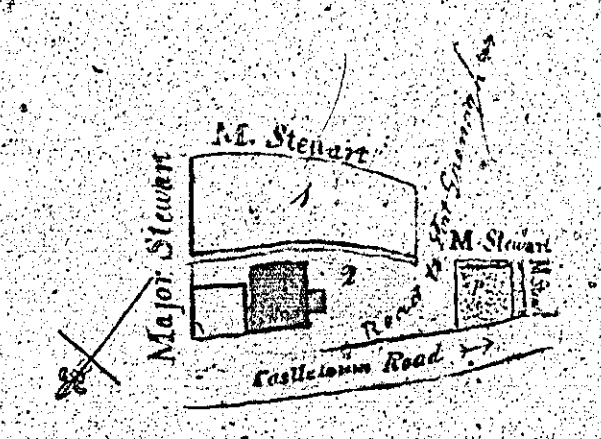


The two following plans are  
both numbered 75

75  
 A Plan of  
 the Garden and  
 Children's Play Ground  
 Belonging to the Parochial  
 School of St. Ann.

	A.	R.	P.
N. Garden	0	0	32
2 Acres, Road yard, Planting for the School including the Plantation and Road	0	2	0



Scale 2 inches to the Chain

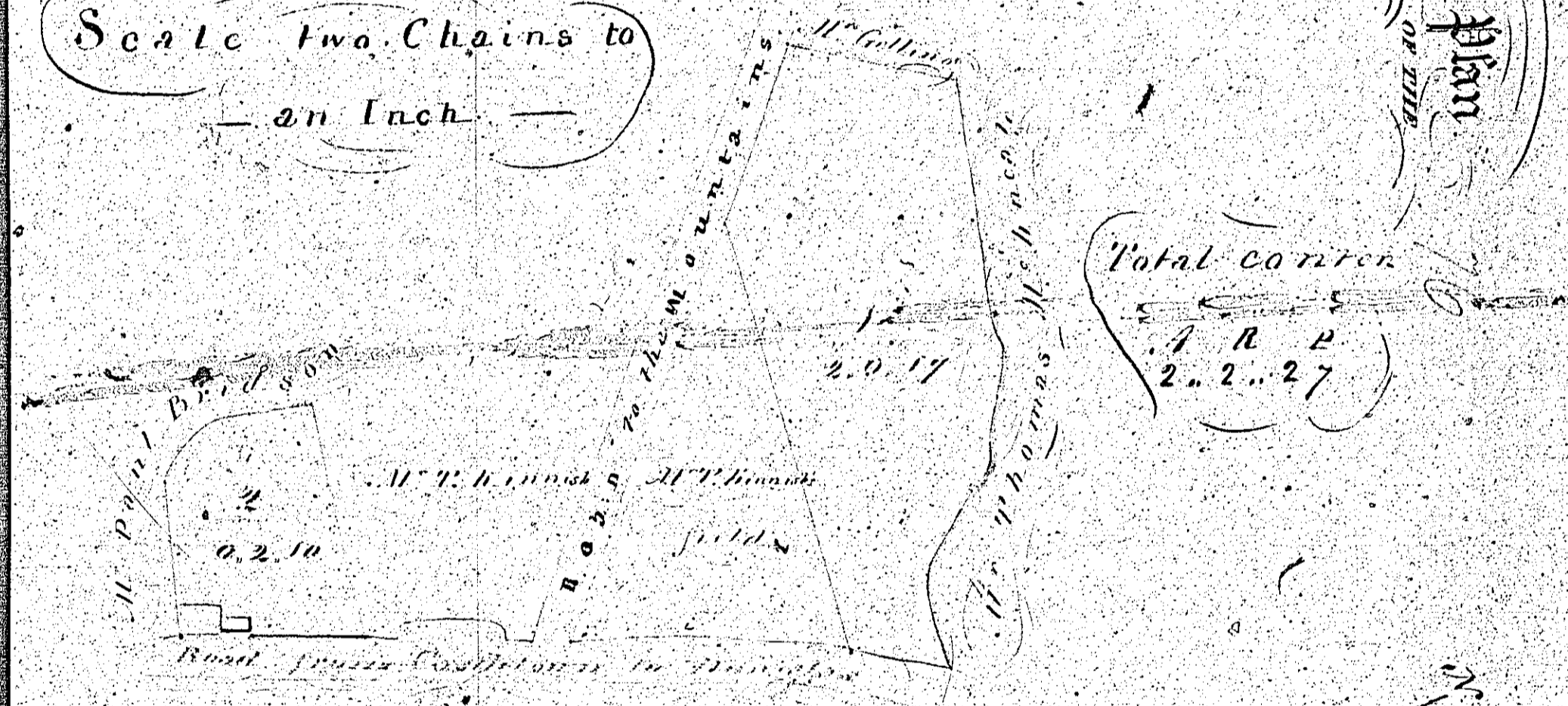
Surveyed by J. N. May 1<sup>st</sup> 1850

175  
Plan and Survey

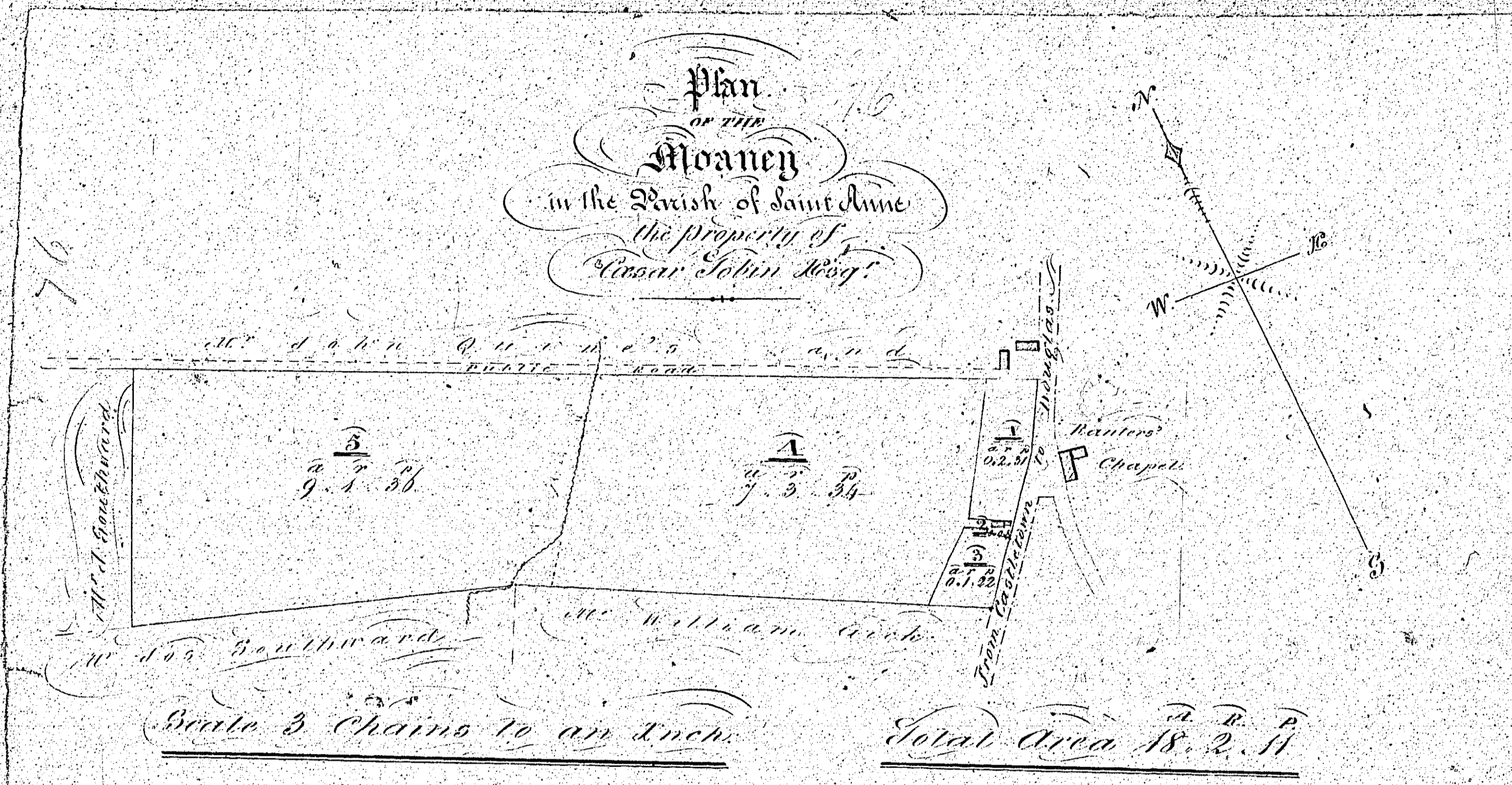
of DAVID'S CROFT

Irish Land  
in the Parish of S<sup>t</sup> Ann  
The property of  
Miss Ann Taylor

Scale Two Chains to  
an Inch



Thos. Gick Surveyor  
1840



*Wm. Cotton Surveyor 1820.*

ISLE OF MAN GOVERNMENT: GENERAL REGISTRY

TITHE PLANS: PARISH OF SANTON

Original coloured (decorative), faint

1:30

END OF VOLUME

T

P

8

**ENED**