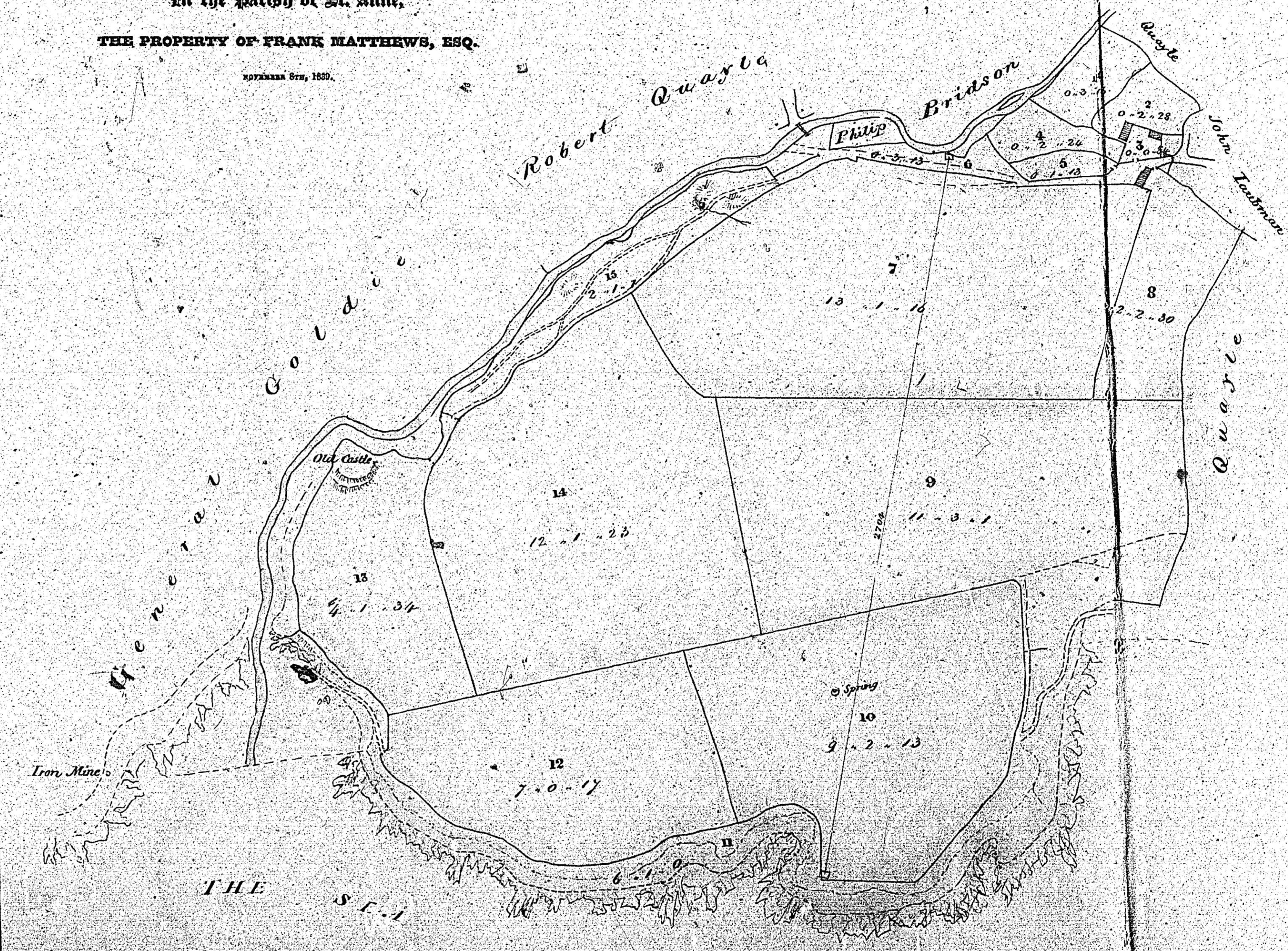


47

**PLAN AND SURVEY**  
**of**  
**ARRAGON BEG,**  
 In the Parish of St. Anne,  
 THE PROPERTY OF FRANK MATTHEWS, ESQ.

1835

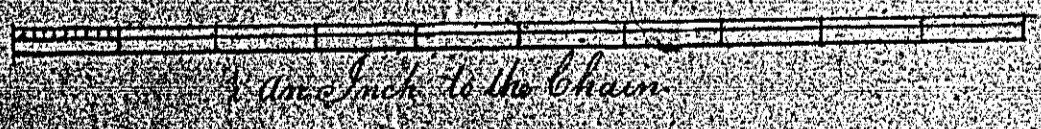


Contents.	
1	0 3 16
2	0 2 28
3	0 0 34
4	0 2 24
5	0 1 13
6	0 3 13
7	13 1 16
8	2 2 30
9	11 3 1
10	9 2 13
11	6 7 0
12	7 0 17
13	4 1 34
14	2 1 23
15	2 1 1
<b>73 1 23</b>	

To Chains  
 Telford & Kaye, Surveyors.



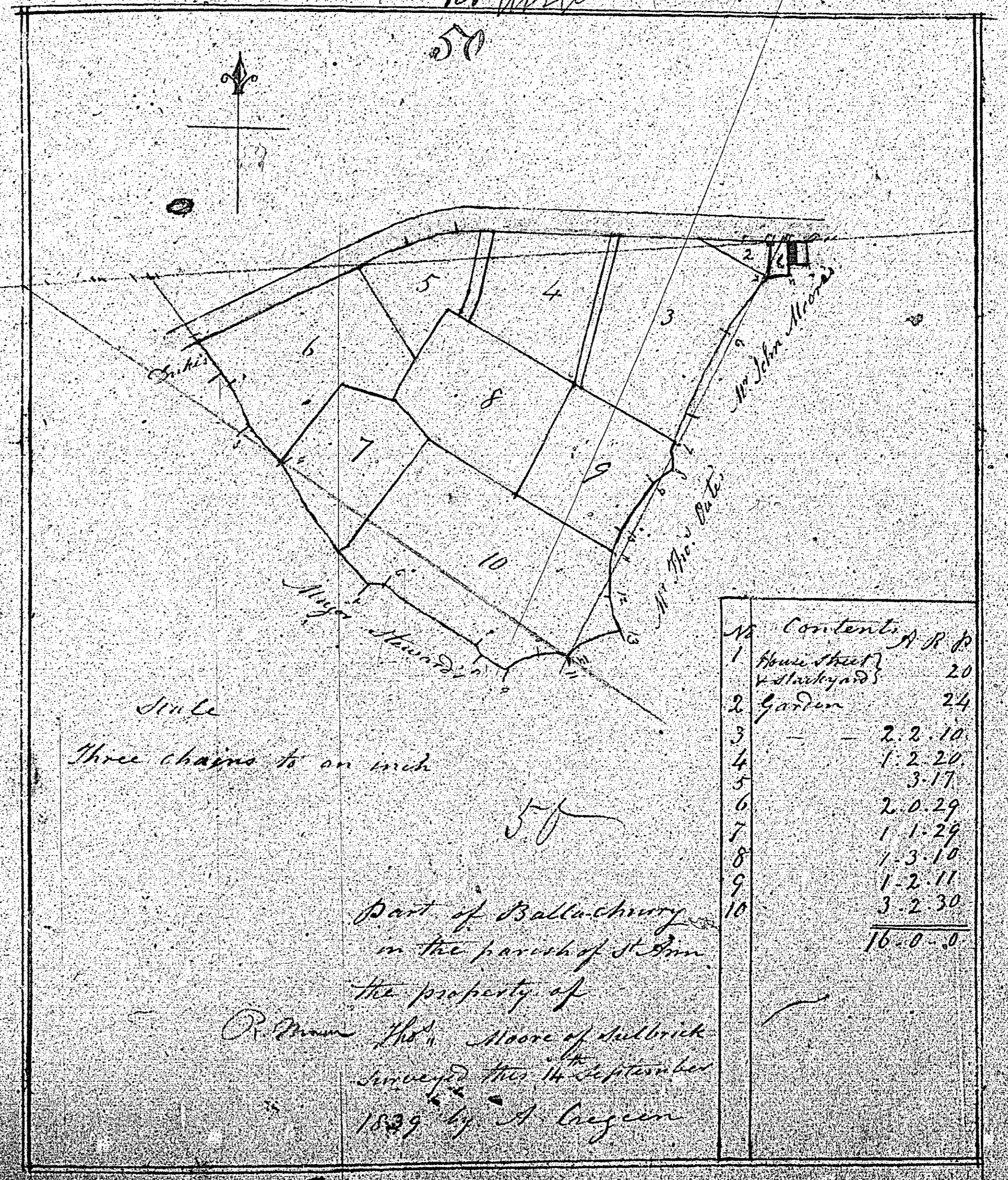
A Survey of  
The E. Ware 49  
in the Parish of S. Ann  
The Property of  
Edw. Mallettmasl.  
Surveyed by W. S.  
April 25<sup>th</sup> 1840



179  
1. 1. 13  
2. 0. 2. 13  
0. 3. 26  
Half the total 1. 2. 13

not used

not used  
50

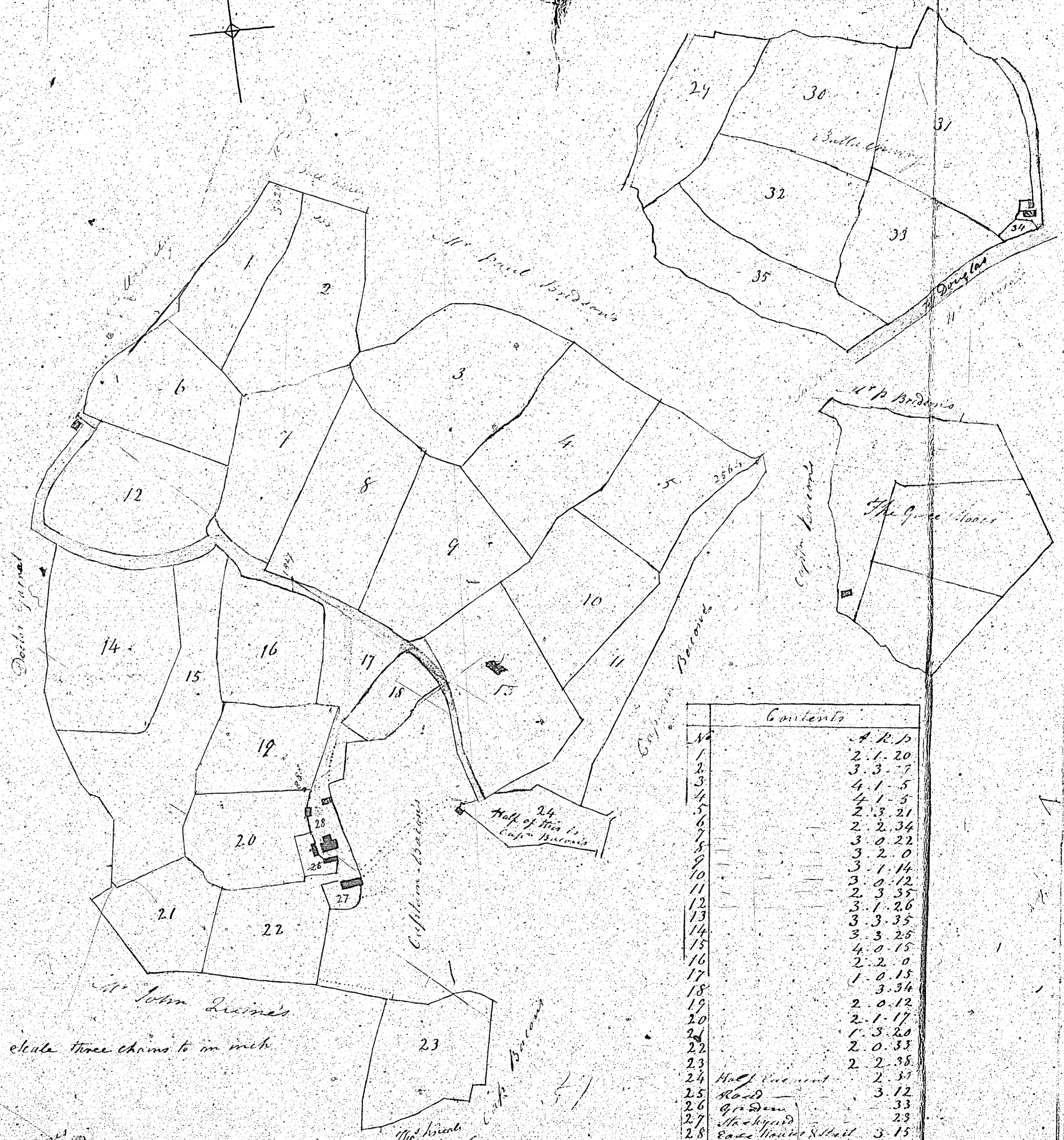
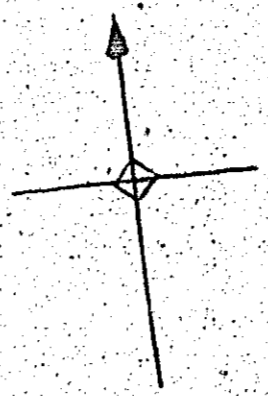


Scale  
Three chains to an inch

No.	Contents	A R P
1	House Street & Yard	20
2	Garden	24
3		2.2.10
4		1.2.20
5		3.17
6		2.0.29
7		1.1.29
8		1.3.10
9		1.2.11
10		3.2.30
		<u>16.0.0</u>

Part of Ballachury  
in the parish of St. Ann  
the property of  
R. Moore Esq. Moore of Mullbrick  
surveyed this 14<sup>th</sup> September  
1839 by A. Cuzner

1839 by A. Cuzner



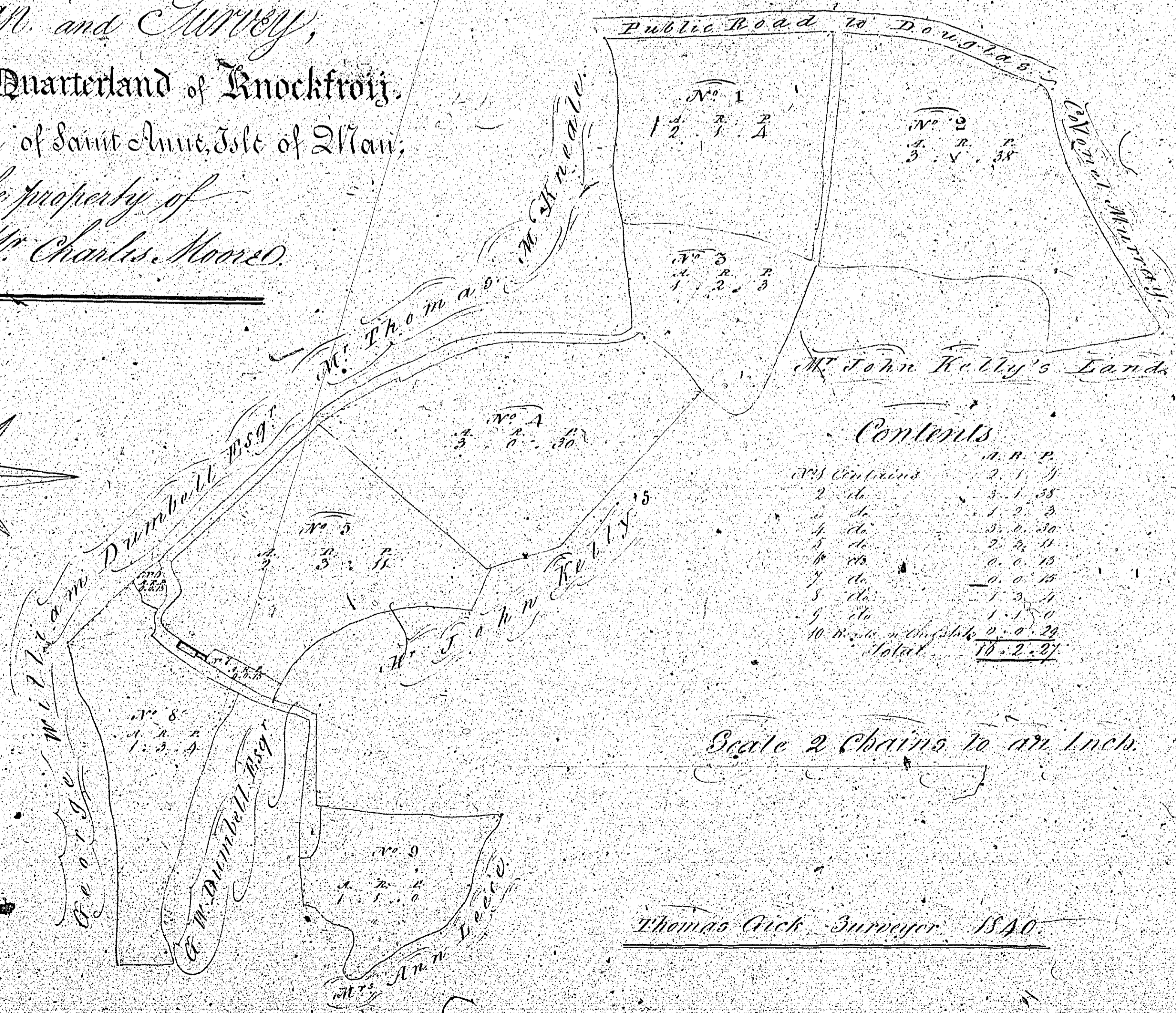
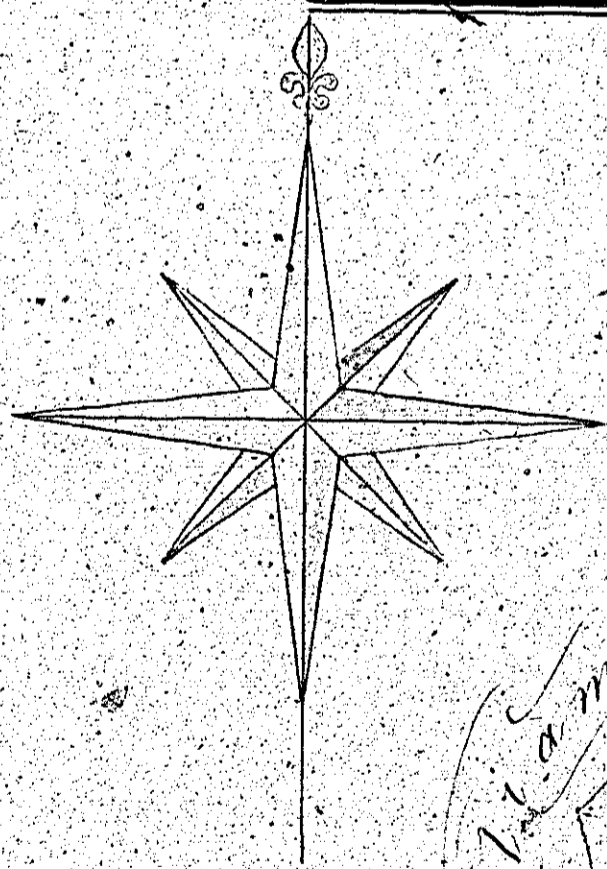
Mr. John Linnin's  
scale three chains to an inch

Mr. Briddens  
Magher y Tove  
Captain Briddens

The Vicar  
Ballinacorney, part of  
Ballacherry, Garce Moor,  
& Magher y Tove, in the  
parish of St. Ann the  
property of W. W. Moore  
Surveyed this 11<sup>th</sup> July  
1839 by A. Craigie

Contents	
1	4 R. 10
2	2 1. 20
3	3 3. 7
4	4 1. 5
5	2 3. 21
6	2 2. 34
7	3 0. 22
8	3 2. 0
9	3 1. 14
10	3 0. 12
11	2 3. 35
12	3 1. 26
13	3 3. 35
14	3 3. 25
15	4 0. 15
16	2 2. 0
17	1 0. 15
18	3 3. 34
19	2 0. 12
20	2 1. 17
21	1 5. 20
22	2 0. 33
23	2 2. 38
24	Half of Vicar's
25	Road
26	Grass
27	Stackyard
28	East Wall of Hall
29	Total Ballinacorney 70. 0. 10
29	Ballacherry 2. 20
30	3. 1. 7
31	4. 2. 9
32	3. 2. 10
33	3. 0. 7
34	Grass Moor 1. 26
35	Road &c 2. 3. 18. 20. 1. 45
36	Garce Moor 8. 2. 15
37	Magher y Tove 3. 2. 10
	Total 102. 2. 10
	3

*Plan and Survey,*  
of part of the Quarterland of Knockfroy,  
in the Parish of Saint Anne, Isle of Man,  
the property of  
*Mr. Charles Moore.*



*Contents*

	<i>a.</i>	<i>r.</i>	<i>p.</i>
<i>1st</i> Contents	0	1	1
2 <i>do.</i>	3	1	38
3 <i>do.</i>	1	2	3
4 <i>do.</i>	3	0	30
5 <i>do.</i>	2	2	9
6 <i>do.</i>	0	0	15
7 <i>do.</i>	0	0	15
8 <i>do.</i>	1	3	1
9 <i>do.</i>	1	1	0
<i>10</i> <i>do.</i> in the <i>Plot</i>	2	0	29
<i>Total</i>	10	2	47

*Scale 2 Chains to an Inch.*

*Thomas Aick, Surveyor. 1840.*

*of*  
*M*  
*M*