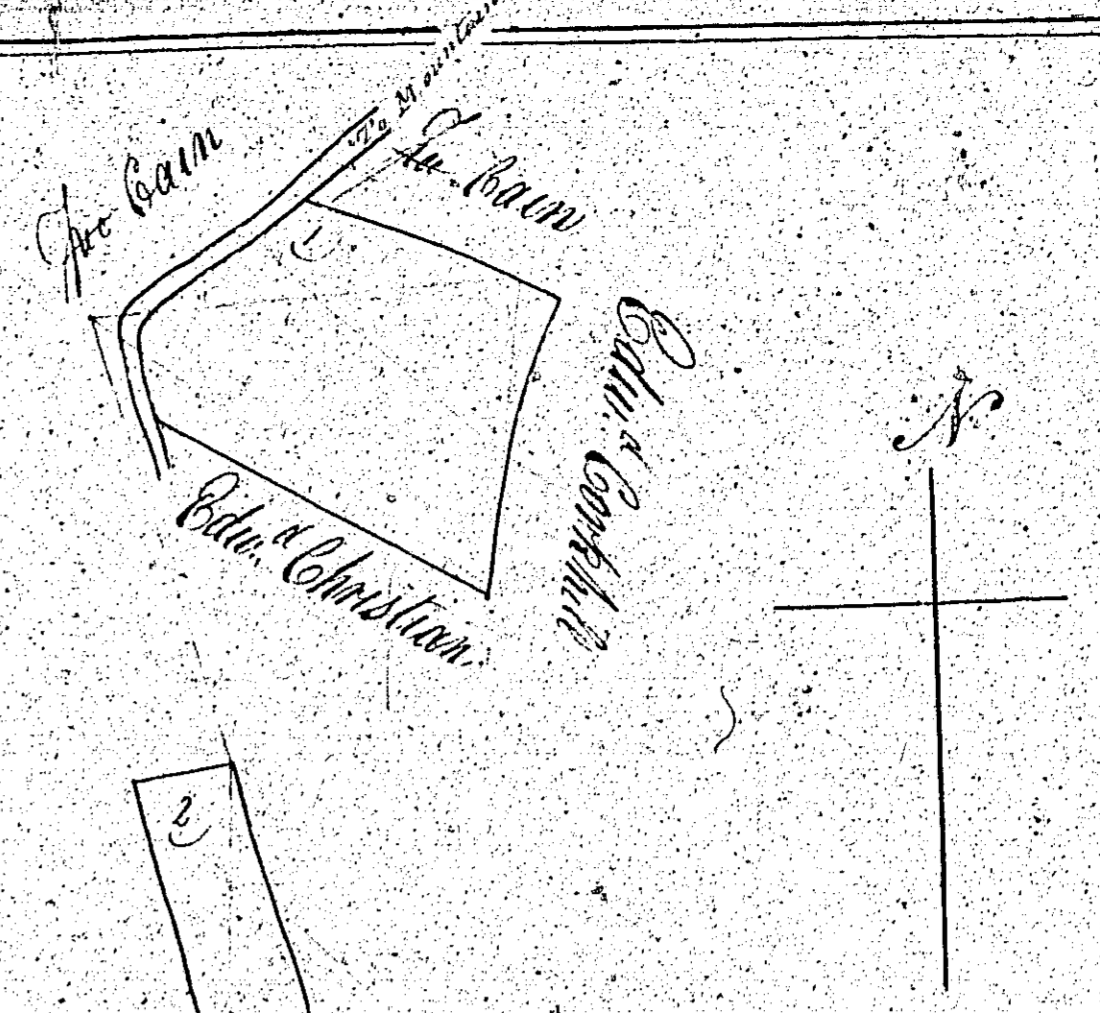
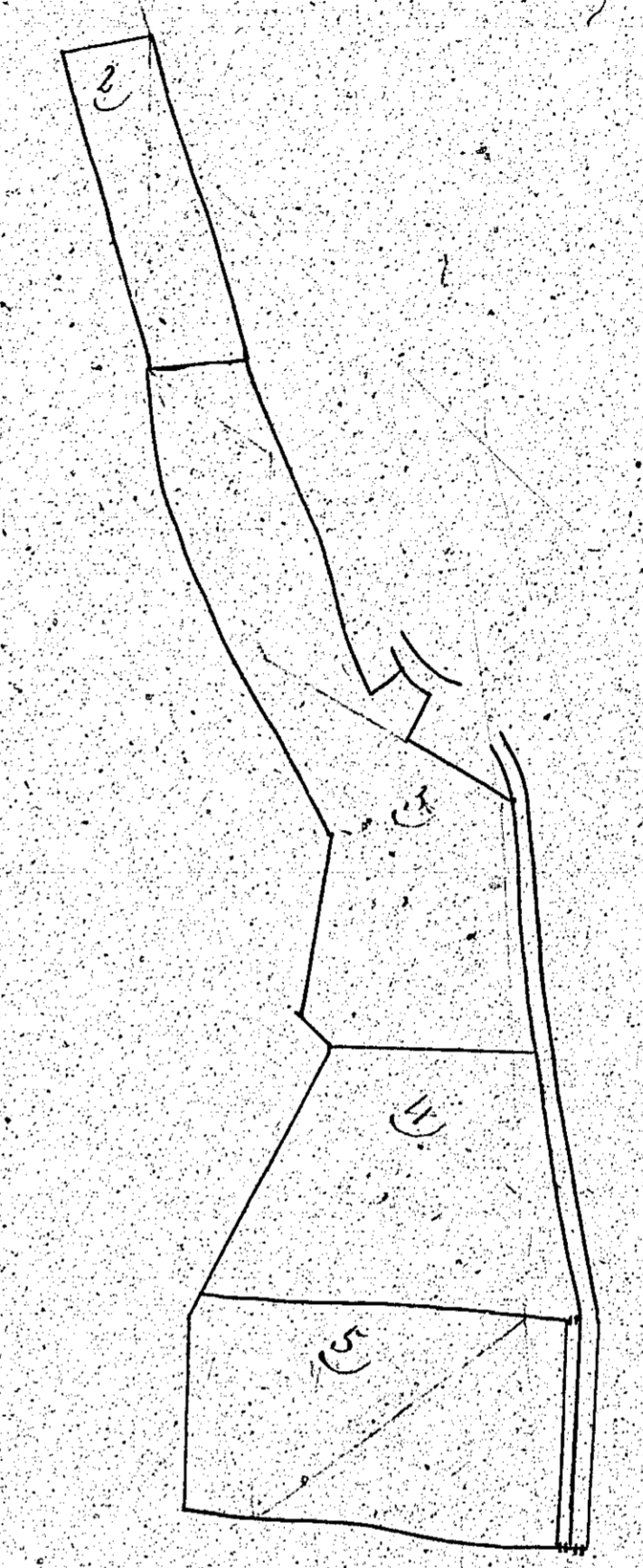


33  
 Plan  
 of the Bally  
 in the Parish of Cosham  
 in the County of  
 Wick. Edm. Christian  
 March 17<sup>th</sup> 1748

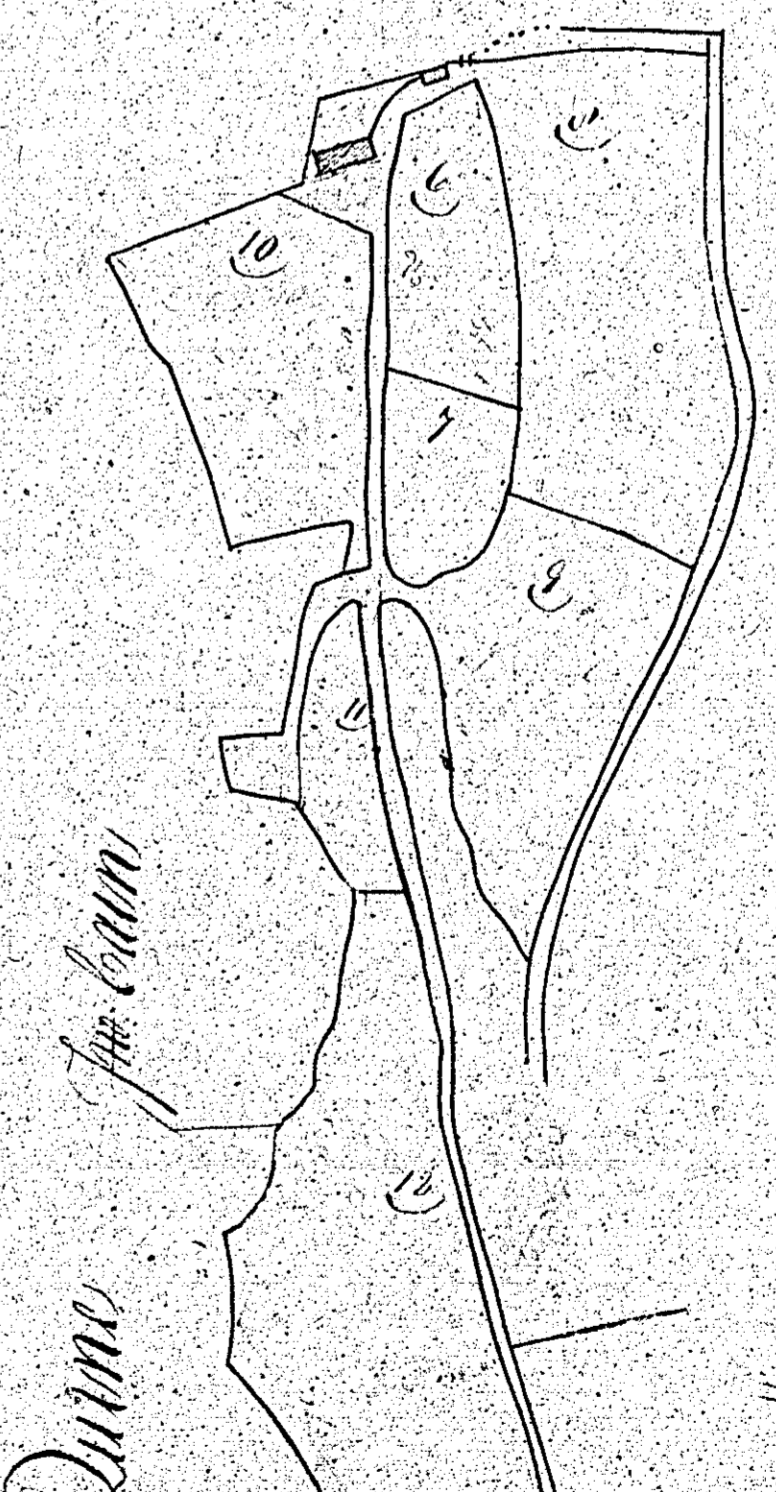


Edmund Quinn



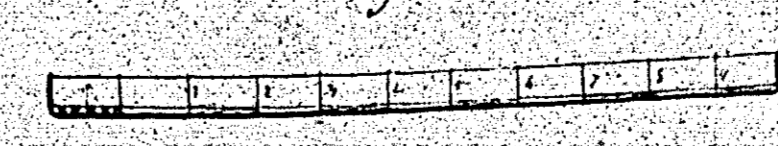
John Quinn

No.	Reference.
1	2-1-
2	3-30
3	3-4
4	2-29
5	2-1-11
6	3-17
7	2-2
8	2-1-25
9	1-2-36
10	1-1-10
11	1-30
12	2-2-36
13	1-3-25
14	1-1-16
15	1-1-16
16	1-1-16
17	1-1-16
18	1-1-16
19	1-1-16
20	1-1-16
21	1-1-16
22	1-1-16
23	1-1-16
24	1-1-16
25	1-1-16
26	1-1-16
27	1-1-16
28	1-1-16
29	1-1-16
30	1-1-16
31	1-1-16
32	1-1-16
33	1-1-16
34	1-1-16
35	1-1-16
36	1-1-16
37	1-1-16
38	1-1-16
39	1-1-16
40	1-1-16
41	1-1-16
42	1-1-16
43	1-1-16
44	1-1-16
45	1-1-16
46	1-1-16
47	1-1-16
48	1-1-16
49	1-1-16
50	1-1-16
51	1-1-16
52	1-1-16
53	1-1-16
54	1-1-16
55	1-1-16
56	1-1-16
57	1-1-16
58	1-1-16
59	1-1-16
60	1-1-16
61	1-1-16
62	1-1-16
63	1-1-16
64	1-1-16
65	1-1-16
66	1-1-16
67	1-1-16
68	1-1-16
69	1-1-16
70	1-1-16
71	1-1-16
72	1-1-16
73	1-1-16
74	1-1-16
75	1-1-16
76	1-1-16
77	1-1-16
78	1-1-16
79	1-1-16
80	1-1-16
81	1-1-16
82	1-1-16
83	1-1-16
84	1-1-16
85	1-1-16
86	1-1-16
87	1-1-16
88	1-1-16
89	1-1-16
90	1-1-16
91	1-1-16
92	1-1-16
93	1-1-16
94	1-1-16
95	1-1-16
96	1-1-16
97	1-1-16
98	1-1-16
99	1-1-16
100	1-1-16

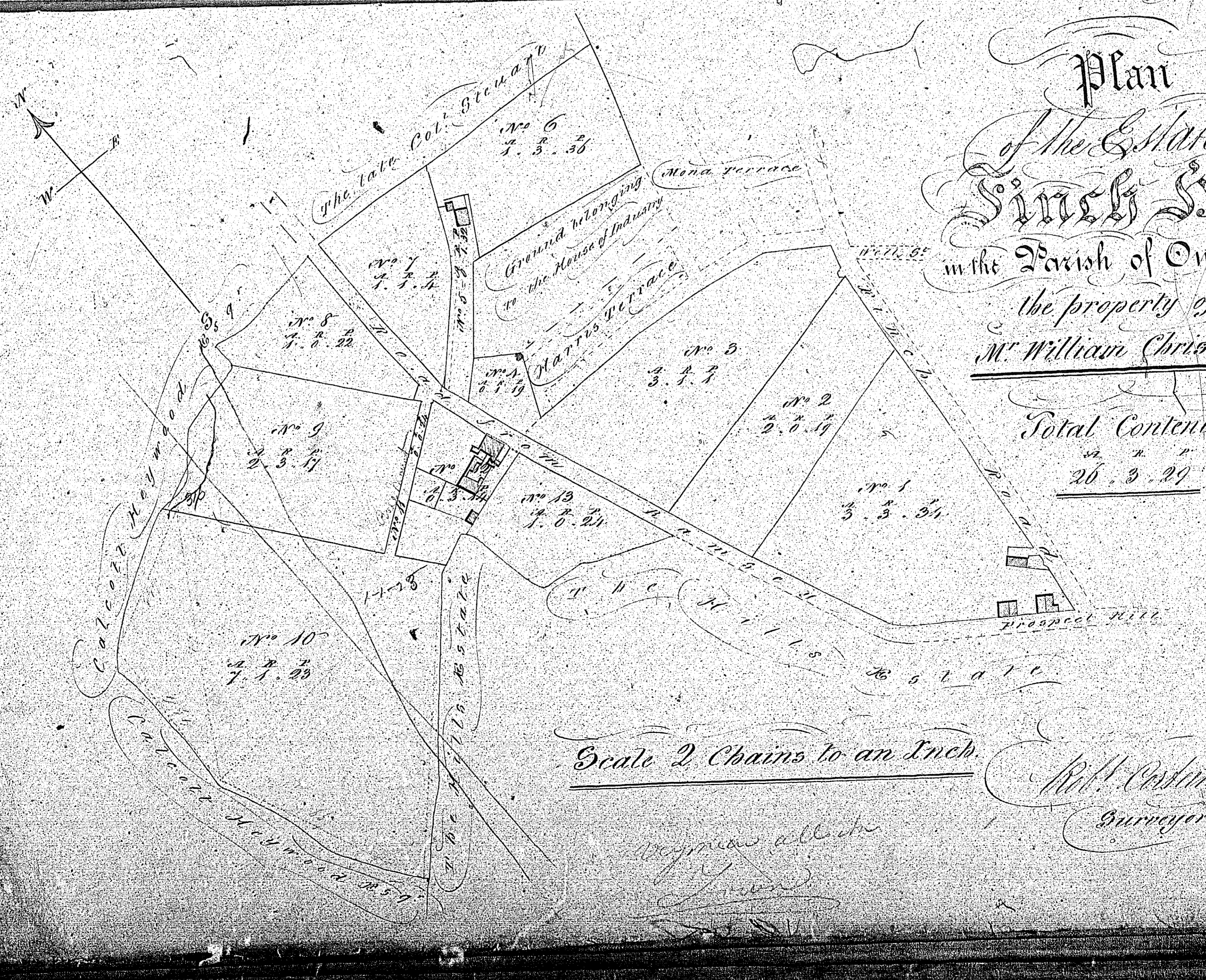


John Quinn

Scale of Chains



Edm. Christian  
 Joseph Blake



Plan  
 of the Estate of  
 Sir John Will  
 in the Parish of Ourchan  
 the property of  
 Mr. William Christian.

Total Contents  
 26.3.29

Scale 2 Chains to an Inch.

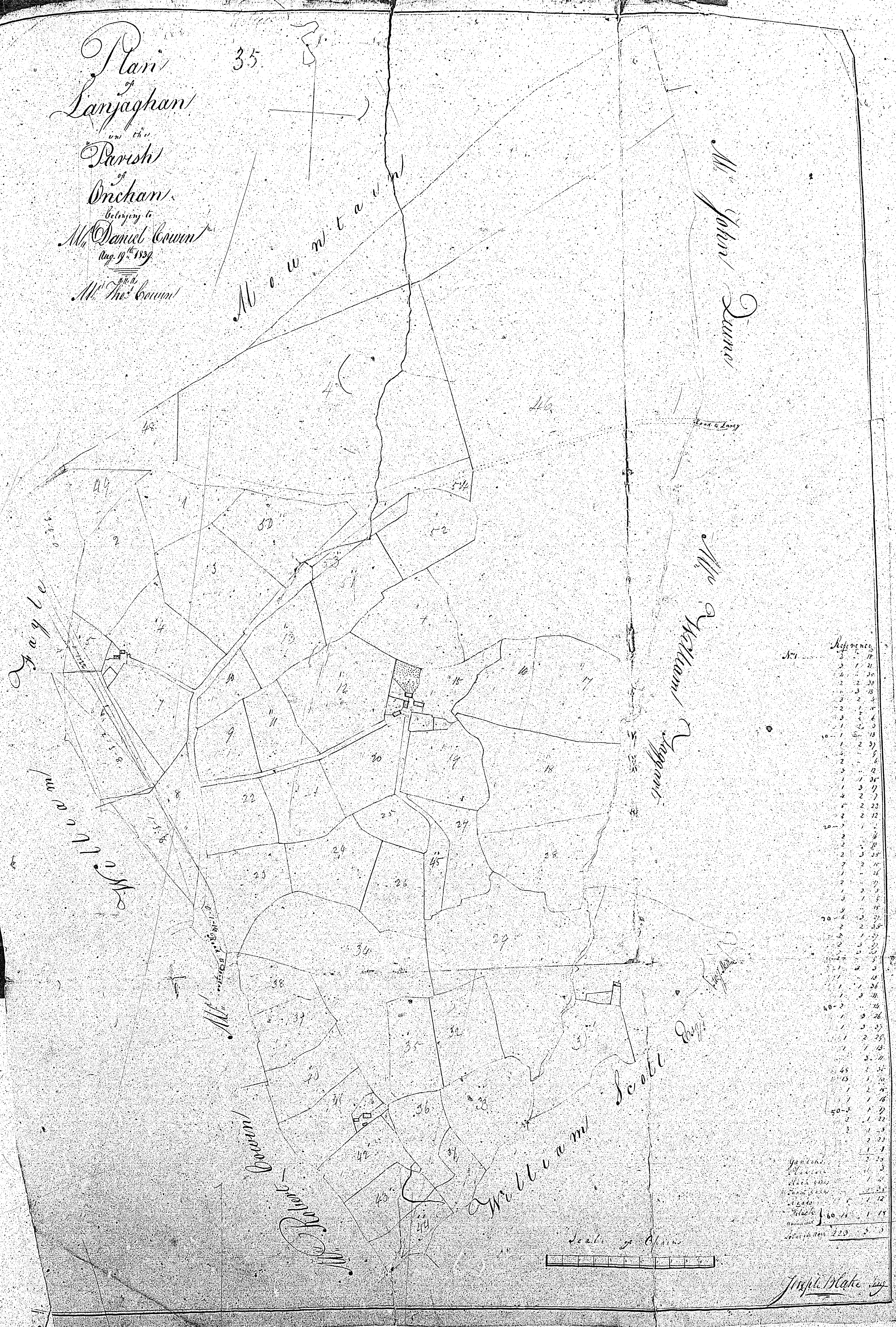
Wm. Christian  
 Surveyor 1840.

Wm. Christian

34

Plan  
 of  
 Lanyaghan  
 in the  
 Parish  
 of  
 Onchan.  
 belonging to  
 Mr Daniel Cowan  
 Aug. 9<sup>th</sup> 1839  
 Mr Tho<sup>s</sup> Cowan

35

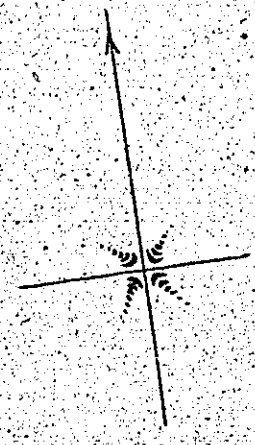
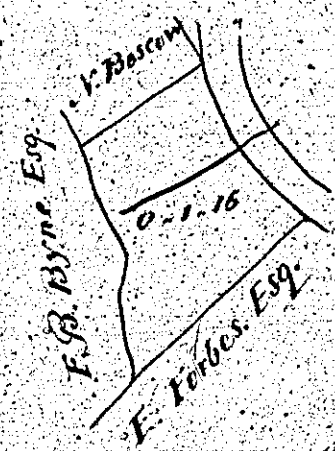


Reference	Acres	Roods	Poles
1	1	1	1
2	1	1	1
3	1	1	1
4	1	1	1
5	1	1	1
6	1	1	1
7	1	1	1
8	1	1	1
9	1	1	1
10	1	1	1
11	1	1	1
12	1	1	1
13	1	1	1
14	1	1	1
15	1	1	1
16	1	1	1
17	1	1	1
18	1	1	1
19	1	1	1
20	1	1	1
21	1	1	1
22	1	1	1
23	1	1	1
24	1	1	1
25	1	1	1
26	1	1	1
27	1	1	1
28	1	1	1
29	1	1	1
30	1	1	1
31	1	1	1
32	1	1	1
33	1	1	1
34	1	1	1
35	1	1	1
36	1	1	1
37	1	1	1
38	1	1	1
39	1	1	1
40	1	1	1
41	1	1	1
42	1	1	1
43	1	1	1
44	1	1	1
45	1	1	1
46	1	1	1
Total	46	0	0

ISLE OF MAN GOVERNMENT: GENERAL REGISTRY  
 TITHE PLANS: PARISH OF ONCHAN  
 Original coloured (decorative) 1:30

Joseph Blake

Garden in Onchan  
Part of Ballinacree  
The Property of W. D. Clague  
March 1860



Scale of 2 Chains to an Inch

Jefferson D. Hoyle Surveyor

Proportion of Occupation Road 0. 0. 6

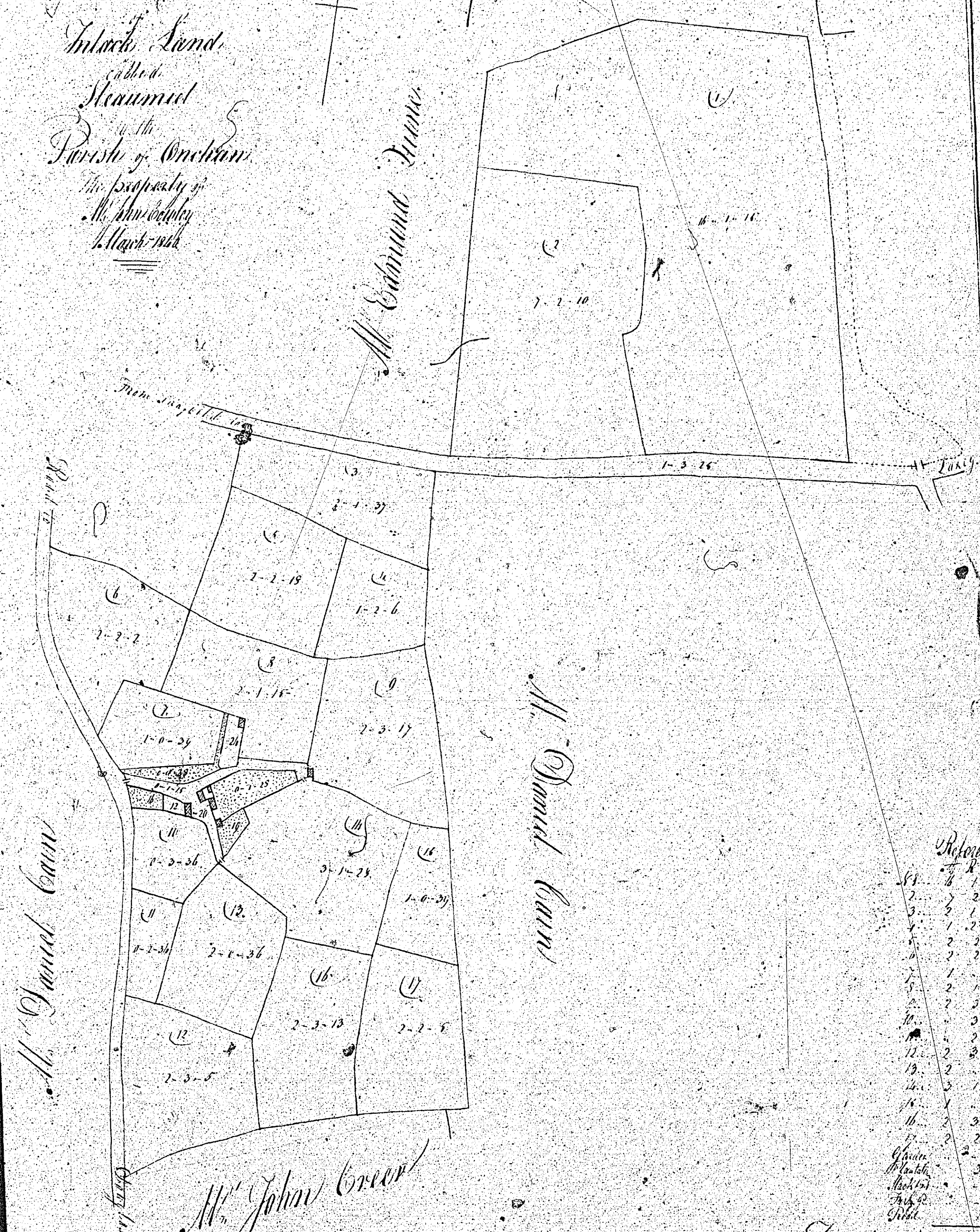
*Handwritten notes in the left margin, partially illegible.*

*Handwritten notes at the bottom of the page, including the name 'Jefferson D. Hoyle' and other illegible text.*

*Handwritten number '36' at the bottom right of the page.*

Plan  
 of the  
 Inland Land  
 called  
 Mountain  
 in the  
 Parish of Onclon  
 the property of  
 Mr. John Green  
 1748

37. Mountain



Plot	Acres	Roods	Poles
1	1	1	15
2	2	0	0
3	1	1	15
4	1	1	15
5	2	1	15
6	2	1	15
7	1	1	15
8	2	1	15
9	2	1	15
10	2	1	15
11	1	1	15
12	2	1	15
13	2	1	15
14	1	1	15
15	3	1	15
16	1	1	15
17	2	1	15
18	2	1	15
19	2	1	15
20	2	1	15
21	2	1	15
22	2	1	15
23	2	1	15
24	2	1	15
25	2	1	15
26	2	1	15
27	2	1	15
28	2	1	15
29	2	1	15
30	2	1	15
31	2	1	15
32	2	1	15
33	2	1	15
34	2	1	15
35	2	1	15
36	2	1	15
37	2	1	15
38	2	1	15
39	2	1	15
40	2	1	15
41	2	1	15
42	2	1	15
43	2	1	15
44	2	1	15
45	2	1	15
46	2	1	15
47	2	1	15
48	2	1	15
49	2	1	15
50	2	1	15

Scale of Chains



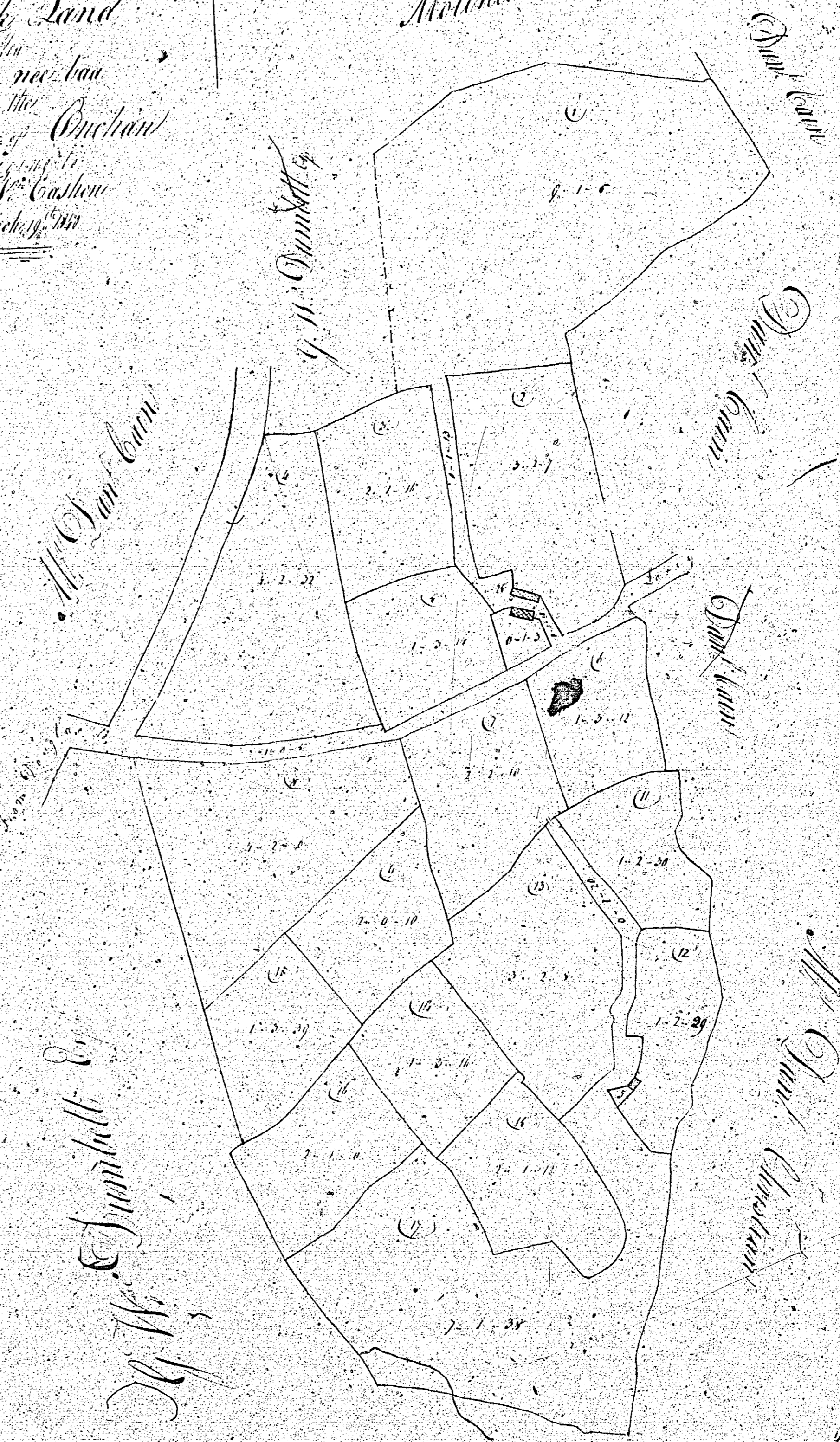
Joseph Blake 1748

Plan

38.

Intact Land  
Lorain, nei. l'au  
Parish of Onchan  
M. W. Cashew  
March, 1850

Mountain



Reference	Area
1	1-2-10
2	2-1-10
3	3-2-10
4	4-3-10
5	5-4-10
6	6-5-10
7	7-6-10
8	8-7-10
9	9-8-10
10	10-9-10
11	11-10-10
12	12-11-10
13	13-12-10
14	14-13-10
15	15-14-10
16	16-15-10
17	17-16-10
18	18-17-10
19	19-18-10
20	20-19-10
21	21-20-10
22	22-21-10
23	23-22-10
24	24-23-10
25	25-24-10
26	26-25-10
27	27-26-10
28	28-27-10
29	29-28-10
30	30-29-10
31	31-30-10
32	32-31-10
33	33-32-10
34	34-33-10
35	35-34-10
36	36-35-10
37	37-36-10
38	38-37-10
39	39-38-10
40	40-39-10
41	41-40-10
42	42-41-10
43	43-42-10
44	44-43-10
45	45-44-10
46	46-45-10
47	47-46-10
48	48-47-10
49	49-48-10
50	50-49-10
51	51-50-10
52	52-51-10
53	53-52-10
54	54-53-10
55	55-54-10
56	56-55-10
57	57-56-10
58	58-57-10
59	59-58-10
60	60-59-10
61	61-60-10
62	62-61-10
63	63-62-10
64	64-63-10
65	65-64-10
66	66-65-10
67	67-66-10
68	68-67-10
69	69-68-10
70	70-69-10
71	71-70-10
72	72-71-10
73	73-72-10
74	74-73-10
75	75-74-10
76	76-75-10
77	77-76-10
78	78-77-10
79	79-78-10
80	80-79-10
81	81-80-10
82	82-81-10
83	83-82-10
84	84-83-10
85	85-84-10
86	86-85-10
87	87-86-10
88	88-87-10
89	89-88-10
90	90-89-10
91	91-90-10
92	92-91-10
93	93-92-10
94	94-93-10
95	95-94-10
96	96-95-10
97	97-96-10
98	98-97-10
99	99-98-10
100	100-99-10

Scale (Chains)



Joseph Blake Survey