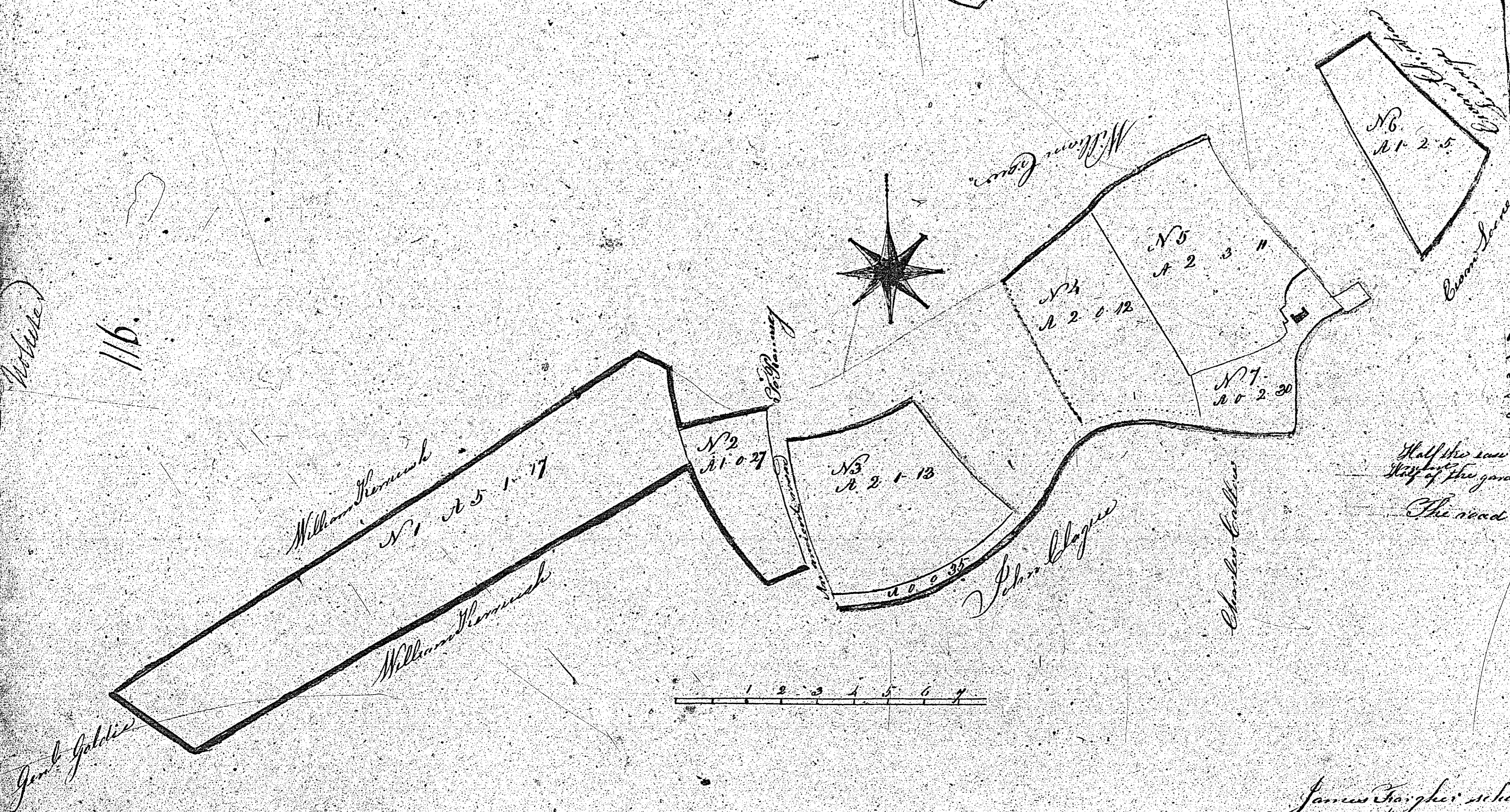


The Property of  
Joseph Skillicorn  
in the parish of  
Maughold

116.

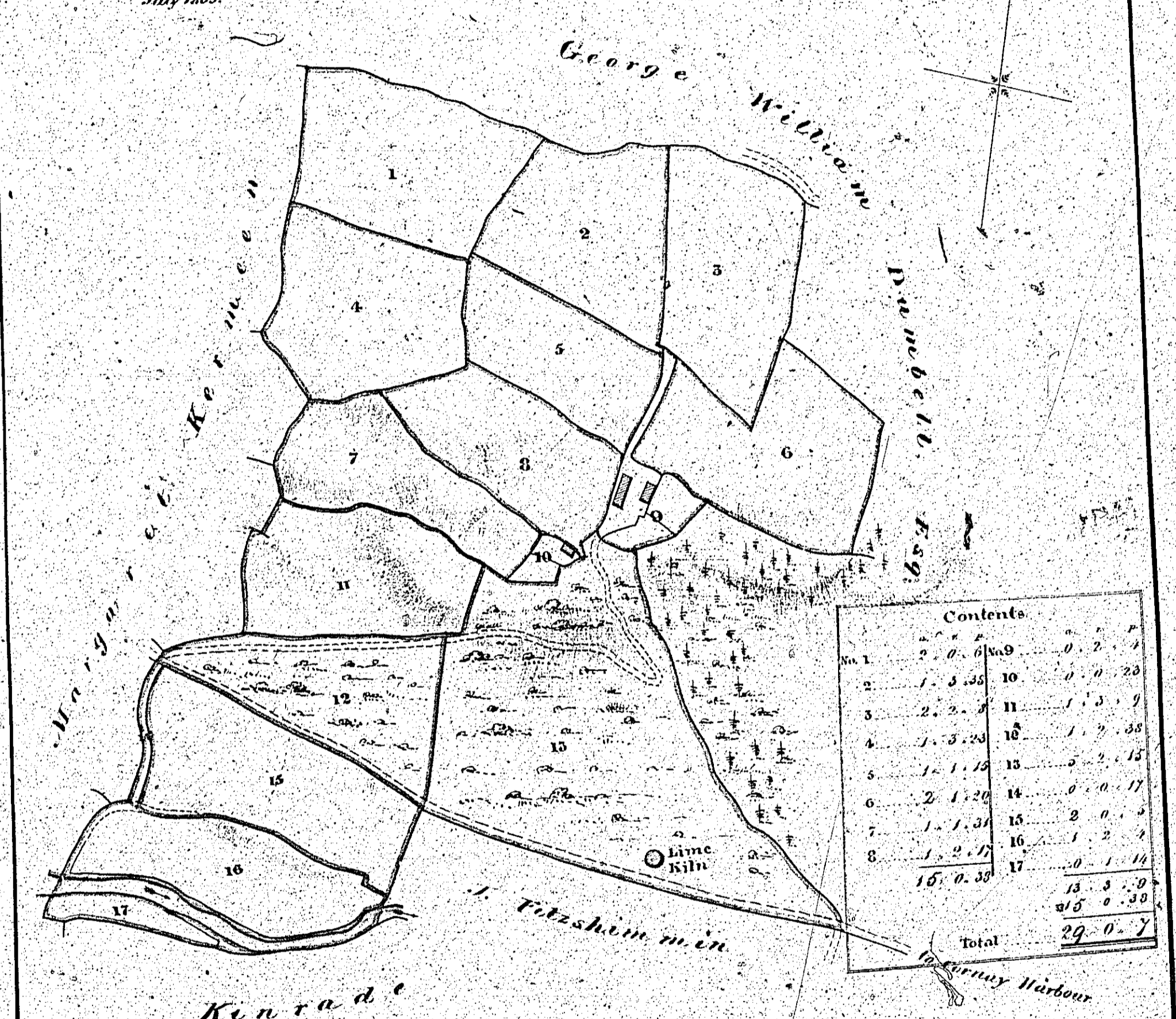


1	5	1	17
2	1	2	27
3	2	1	10 1/2
4	2	0	12
5	2	3	11
6	1	2	3
	0	1	10
			3
<hr/>			
18	22	27	7
0	0	23	
16	2	10	
15	3		

James Forgher schoolmaster Maughold  
Aug 19th 1839



117.  
**BALLASKAIG VEG**  
 Maughold  
 Belonging to John Soyle  
 July 1839.



Contents	
1	2 0 6
2	1 3 35
3	2 2 7
4	1 3 29
5	1 1 15
6	2 1 26
7	1 1 34
8	1 2 17
9	10 0 35
10	0 0 20
11	1 3 9
12	1 9 30
13	0 2 15
14	0 0 17
15	0 0 5
16	1 2 7
17	0 1 16
Total	29 0 7

Portion of Corney River... 0 1 9  
 Portion of Public Road... 0 1 3

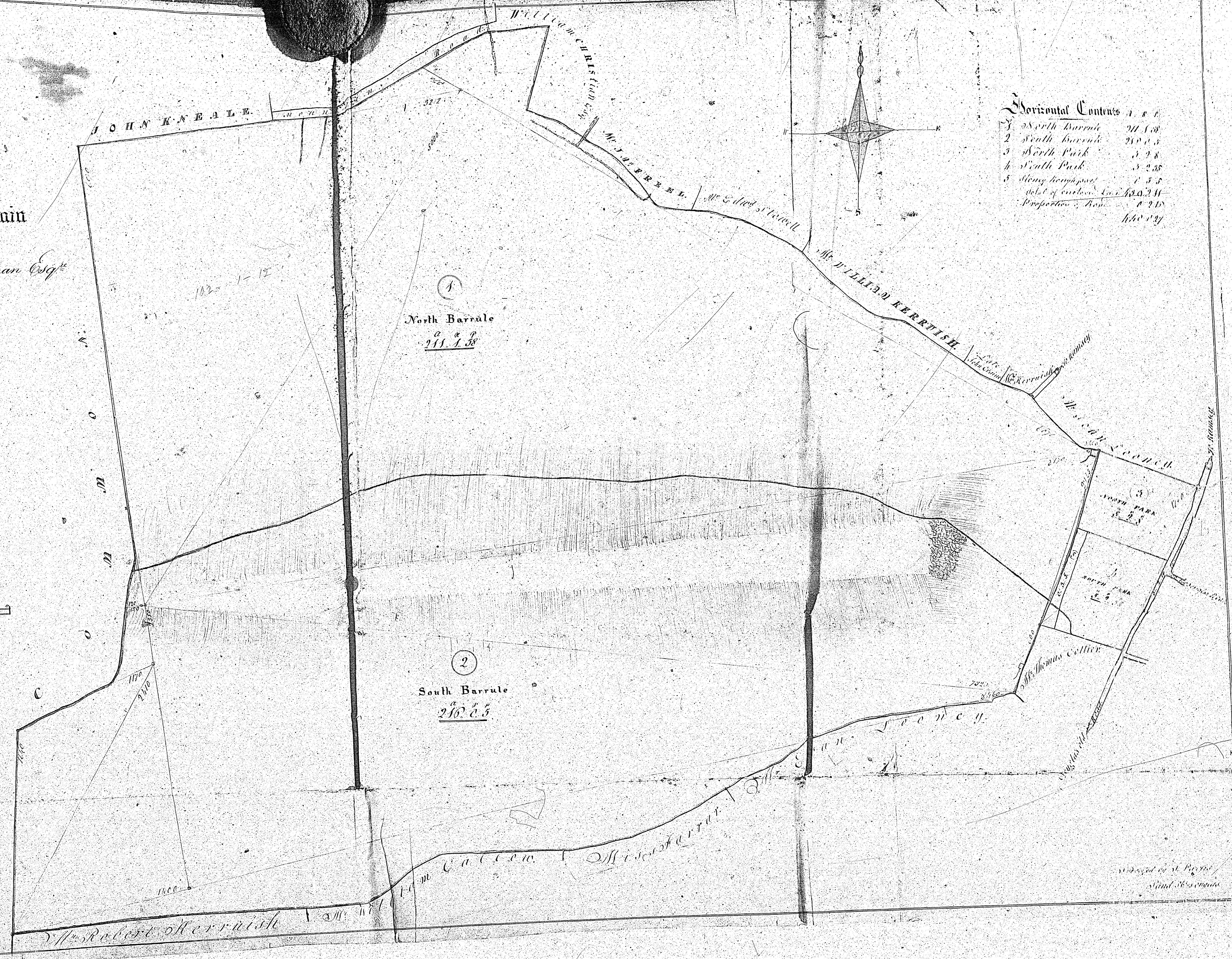
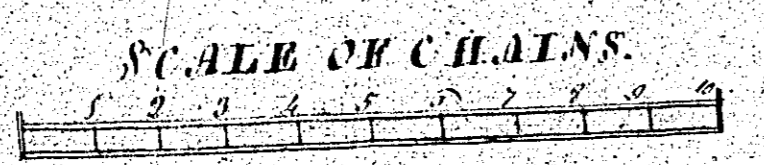
Surveyed by Alexander Thomson



118

PLAN  
of  
Barrule Mountain  
the property of  
John Seldie Taulman Esq<sup>r</sup>  
situate in the parish of  
Maughold

1839



Horizontal Contents

1	North Barrule	211 1/2
2	South Barrule	210 1/2
3	North Park	3 2 1/2
4	South Park	3 2 1/2
5	Stony town part	1 3 1/2
Total of each part		420 1/2
Proportion of Area		116 1/2

Surveyed by J. P. Keble  
and J. S. Keble



PREVIOUS IMAGE REPEATED

*Sohn*

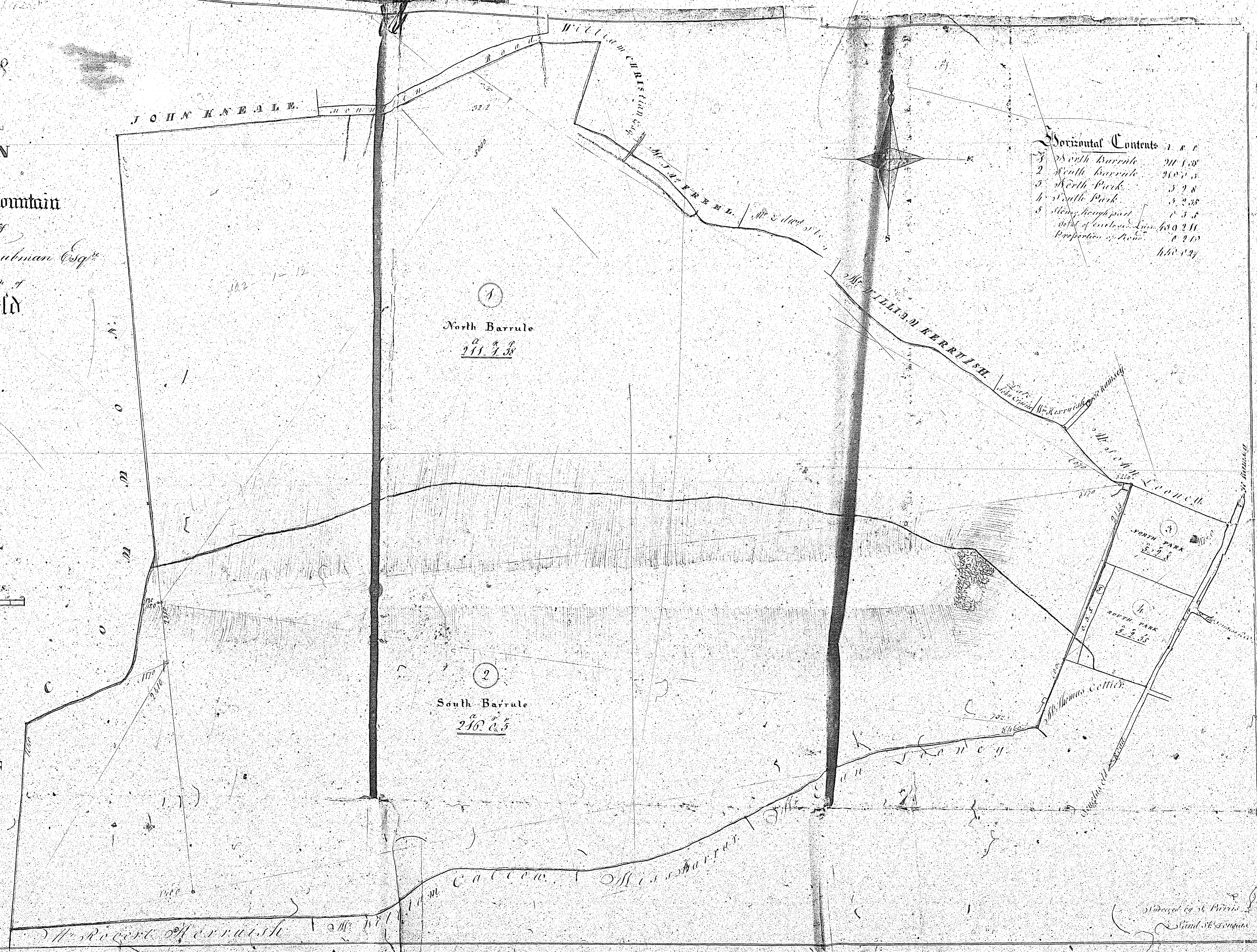
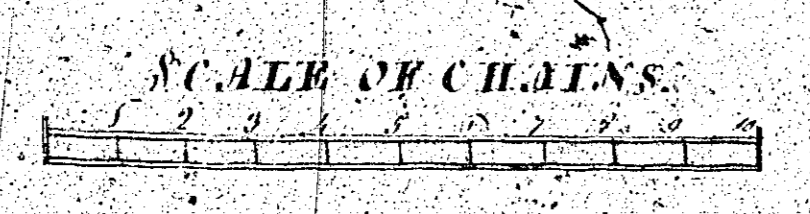


118

### PLAN

**Barrule Mountain**  
the property of  
*John Goldie Taulman Esq<sup>r</sup>*  
situate in the parish of  
**Maughold**

5839



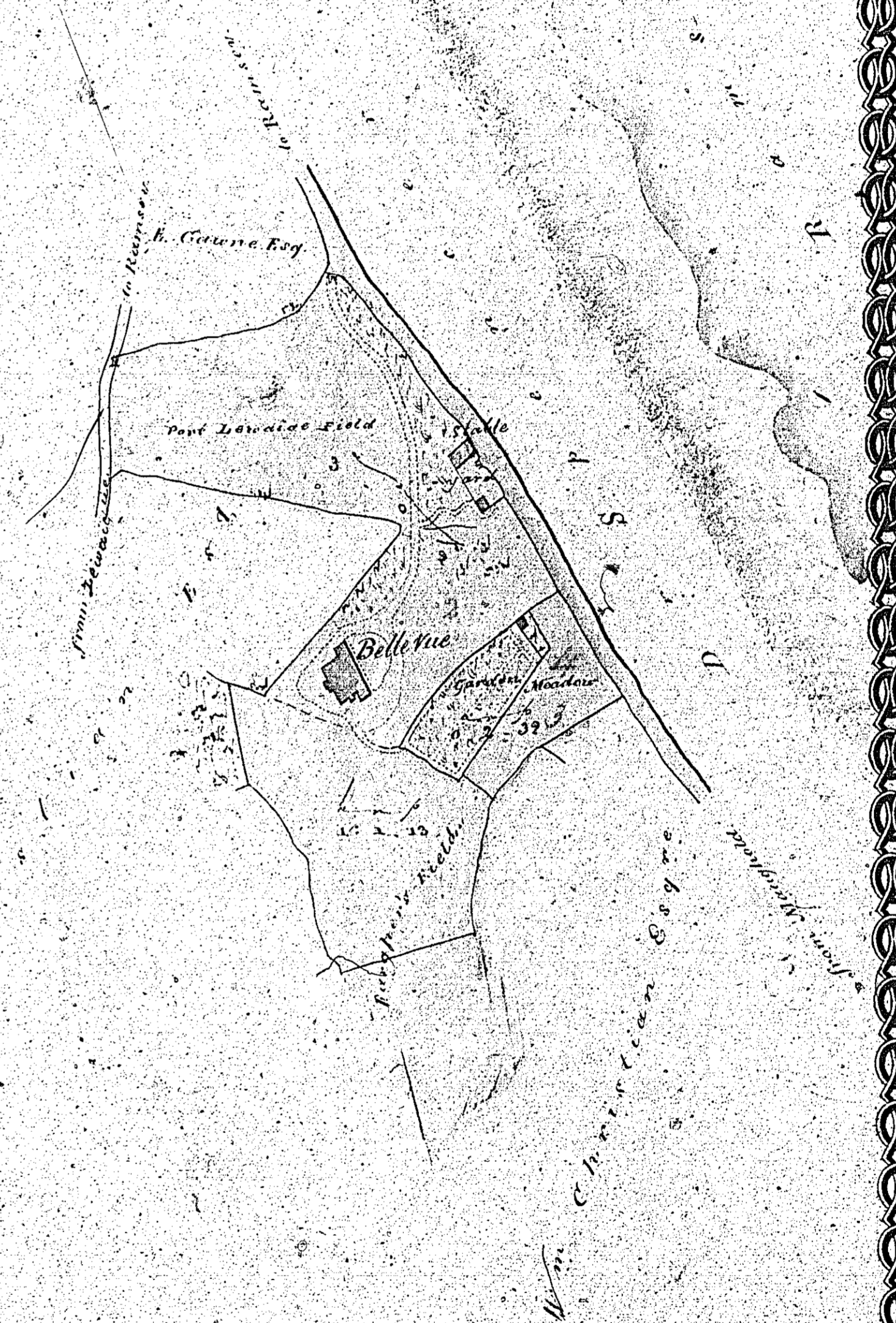
Horizontal Contents	
1 North Barrule	211 1/2
2 South Barrule	216 1/2
3 North Park	5 2/8
4 South Park	5 2/8
5 Along the road	7 3/4
Total of enclosed	450 1/2
Proportion of Area	440 1/2

Surveyed by St. Pierre  
and St. Thomas



Belle View  
Maughold  
The property of Joseph Williamson Esq.  
Aug. 1839.  
As surveyed in the year 1837.

119



Scale 10 chains

Total 5.037

J. Williamson Esq.  
Land Surveyor  
1839  
Ramsay