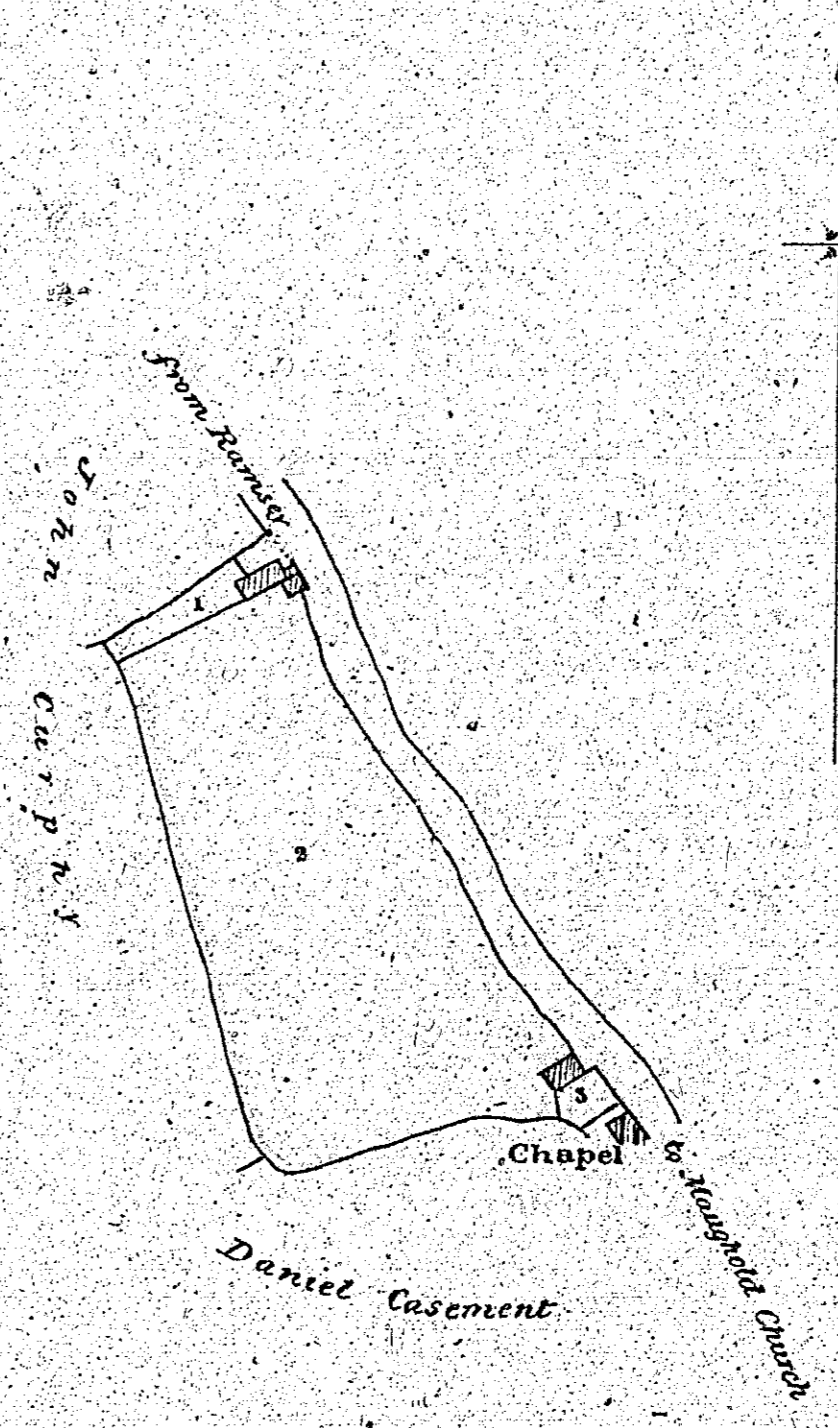


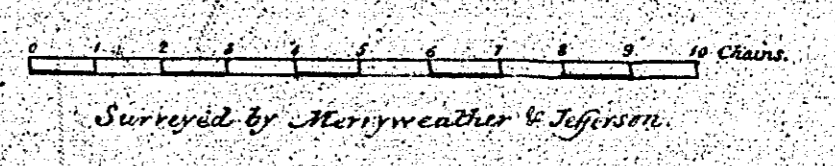
6  
 Port Lough Close  
 (in Folia Quarterland) H. M. M. M. M.  
 Belonging to Thos. Corin  
 July 1839.



Contents.

1.	0. 0. 33
2.	1. 1. 20
3.	0. 0. 7
Total.	1. 2. 2

Proportion of Public Roads.....0. 0. 21.

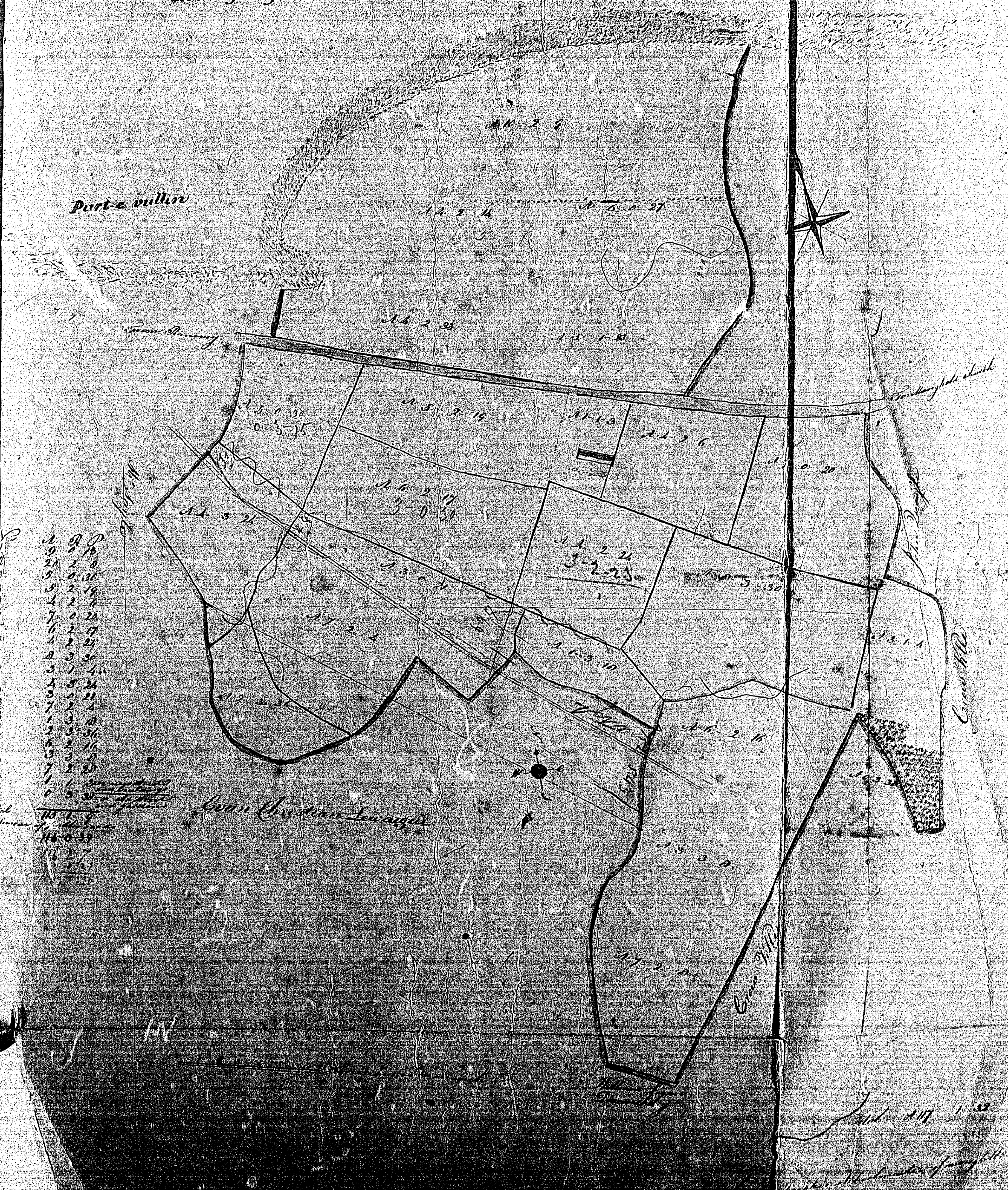


Witnessed  
EDWARD CHRISTIAN  
Ballaterson of Maughold's  
Estate. June 27 1839

Ramsey bay

Ramsey bay

Part of outline



1	9	18
2	1	36
3	2	18
4	2	18
5	2	18
6	2	18
7	2	18
8	2	18
9	2	18
10	2	18
11	2	18
12	2	18
13	2	18
14	2	18
15	2	18
16	2	18
17	2	18
18	2	18
19	2	18
20	2	18
21	2	18
22	2	18
23	2	18
24	2	18
25	2	18
26	2	18
27	2	18
28	2	18
29	2	18
30	2	18

ISLE OF MAN GOVERNMENT: GENERAL REGISTRY

THE PLANS: PARISH OF MAUGHOLD

Original coloured

1:30



*Ballaecreggan*

Maughold.

Belonging to W. Christian Esq.

July 1830.



Contents.			
No. 1	a	r	p.
1	1	0	16
2	0	0	30
3	0	0	26
4a	1	2	13
5	4	3	15
6	8	3	17
7	6	1	18
8	1	0	24
9	10	1	29
10	0	1	25
11	0	2	27
			46
			0
			39
			82
			3
			25

Proportion of Public Roads ..... 0 . 3 . 6

No. 1	a	r	p.
1	1	0	16
3	0	0	26
4a	1	2	13
8	1	0	24
10	0	1	25
11	0	2	27
12	0	1	16
13	0	1	16
14	0	1	12
			5
			39

Surveyed by Merryweather & Jefferson

ISLE OF MAN GOVERNMENT: GENERAL REGISTRY  
 TITHE PLANS: PARISH OF MAUGHOLD  
 Original coloured 1:30