

PLAN AND SURVEY
of
BALLANANK,

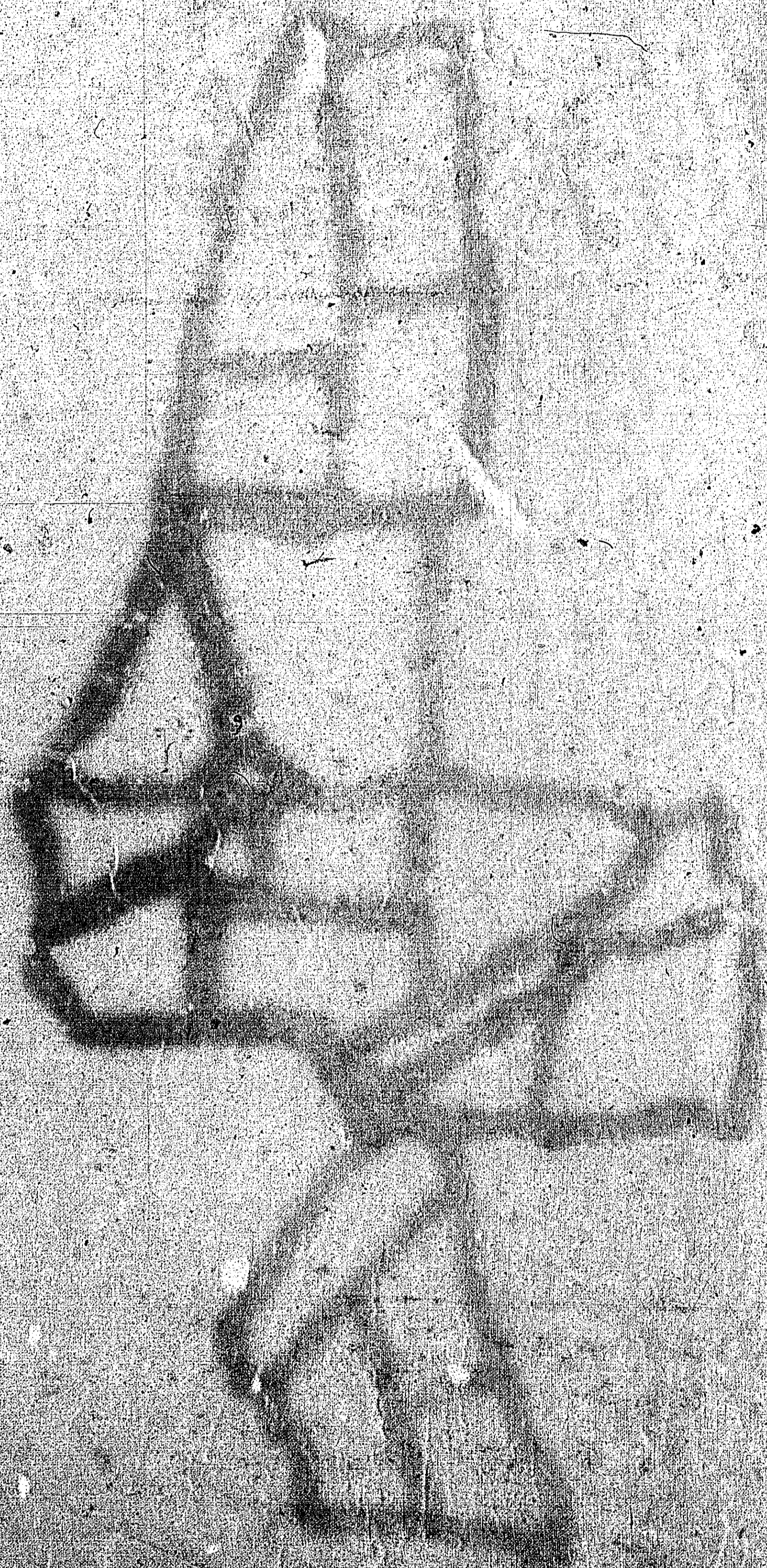
IN THE PARISH OF MALEW,
THE PROPERTY OF THOS. BRIDSON, ESQ.

JANUARY, 1840.



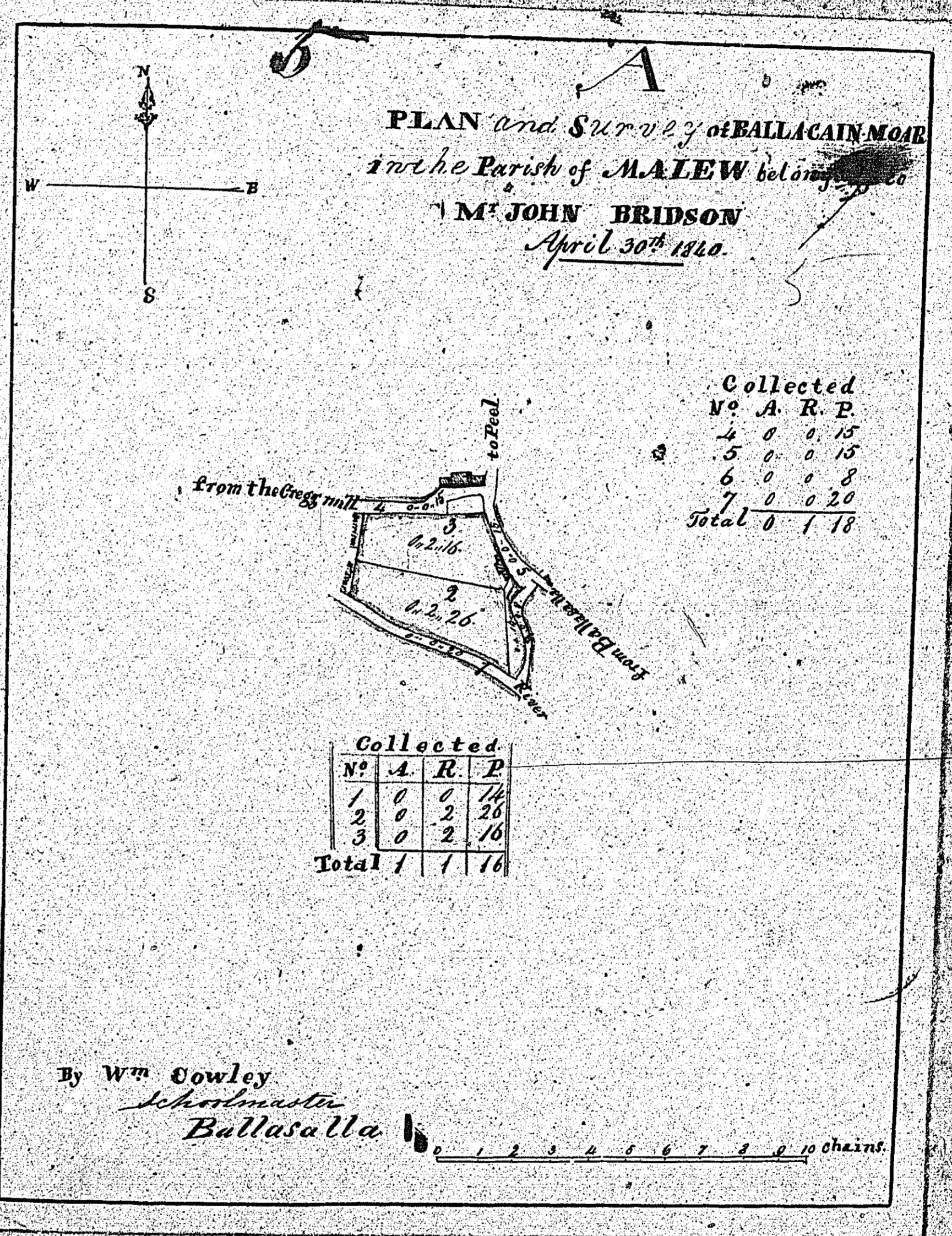
Jefferson and Kayll Surveyors

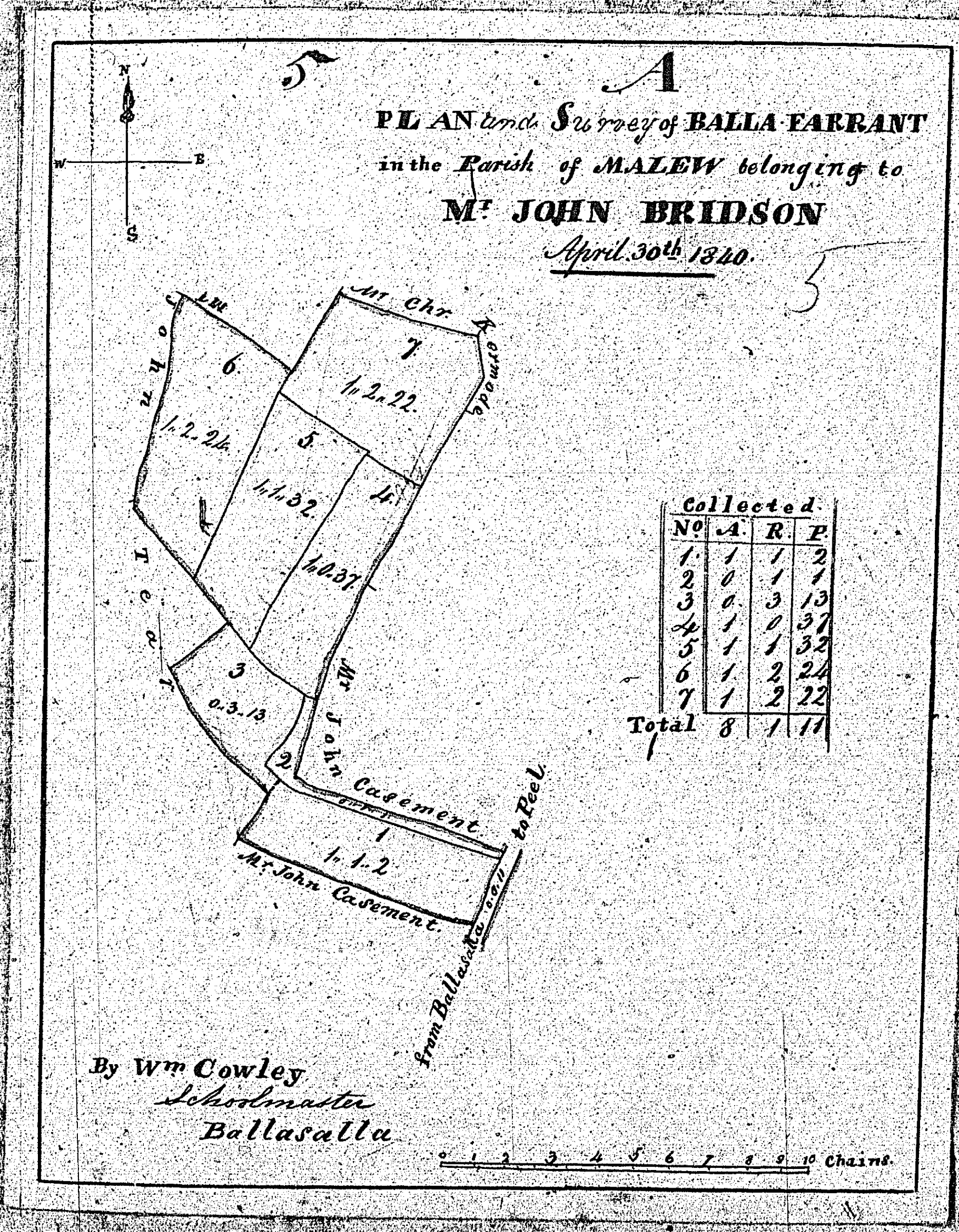
Total Content 50-6-30
Incorporated into map 5-24

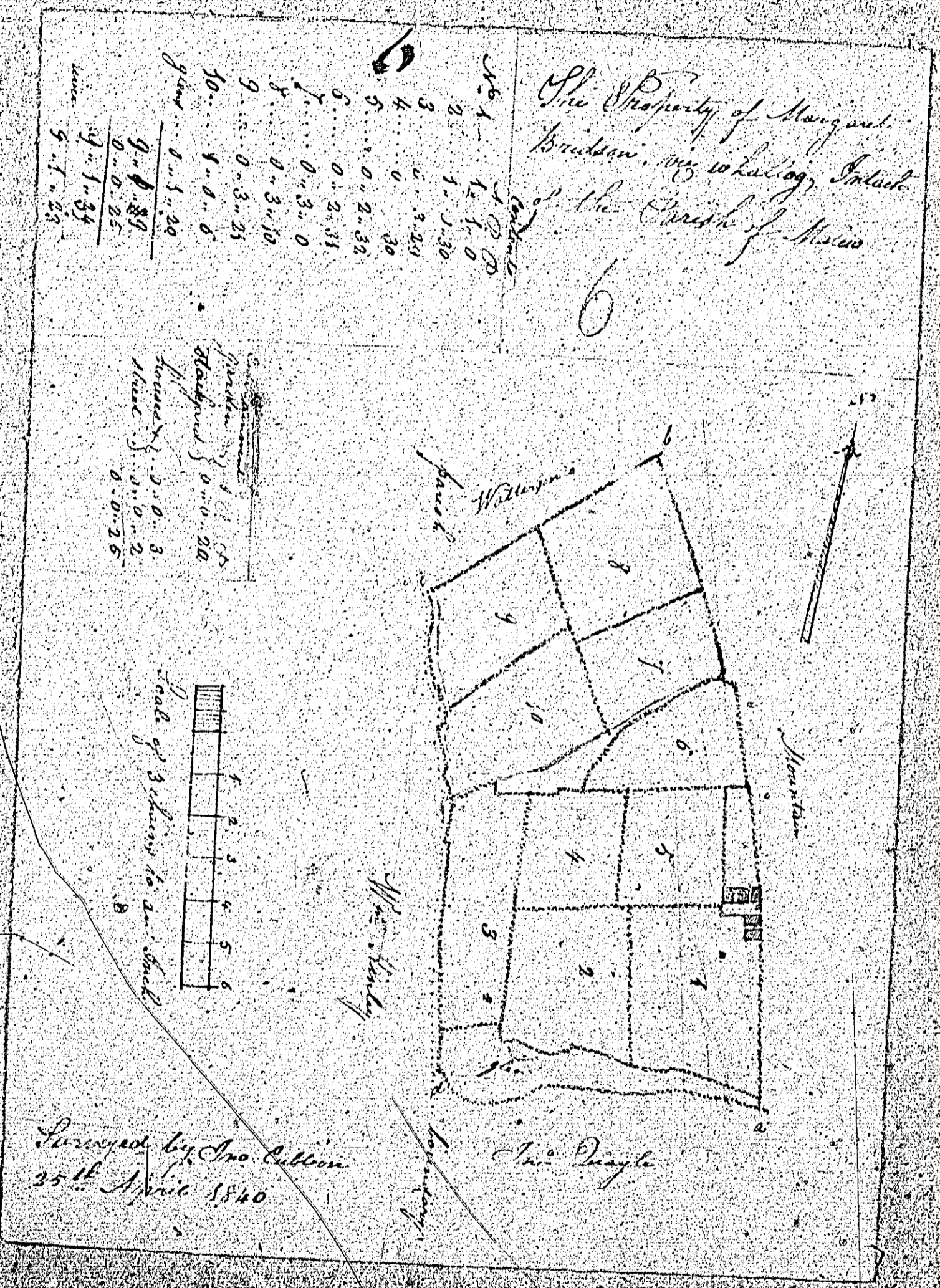


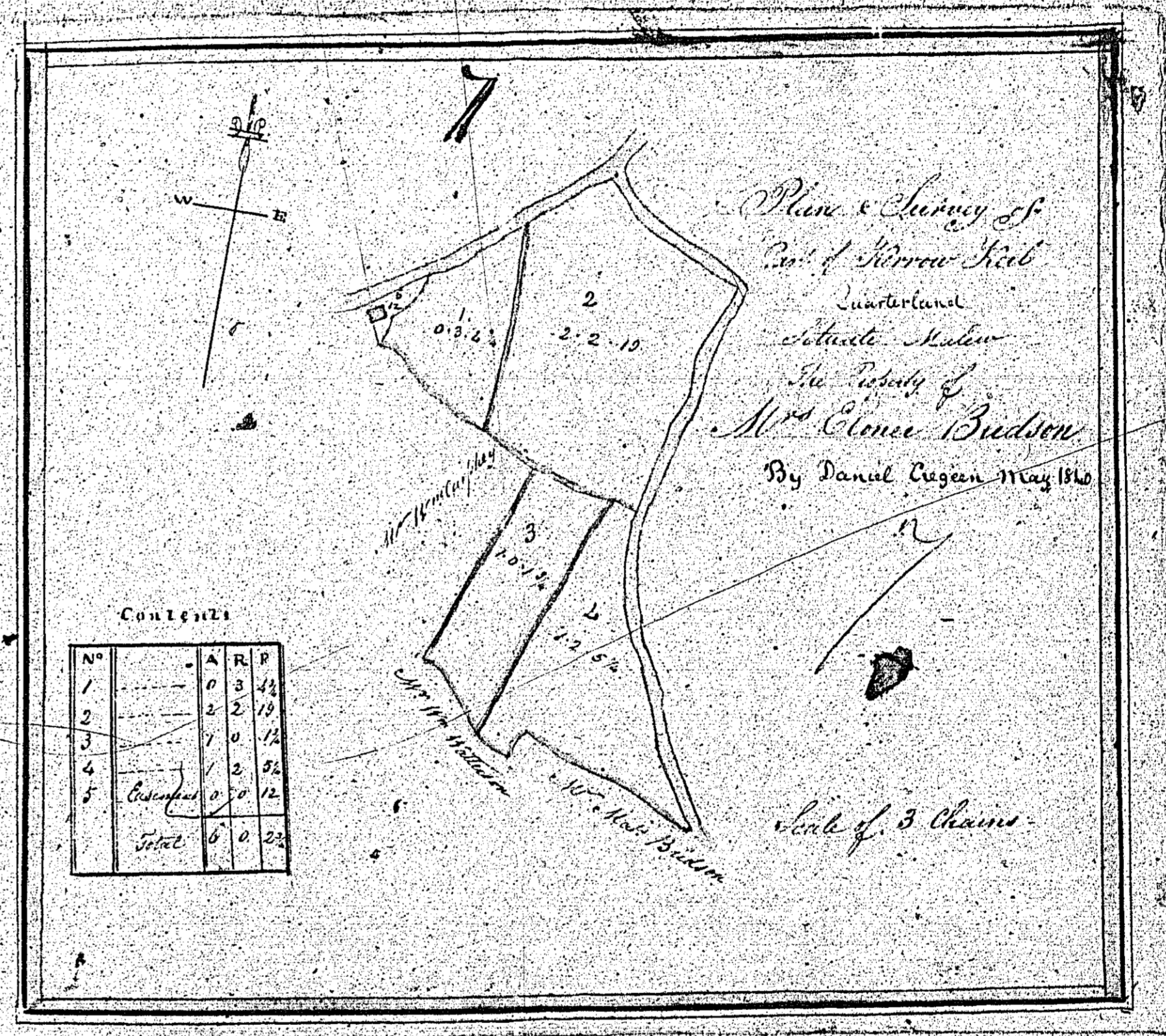
The two following plans are
numbered 5

11
Witnessed by J. Lawrence Newell









Contents

No	A	R	P
1	0	3	1/2
2	2	2	10
3	7	0	1/2
4	1	2	0 1/2
5	0	0	12
Total	6	0	23