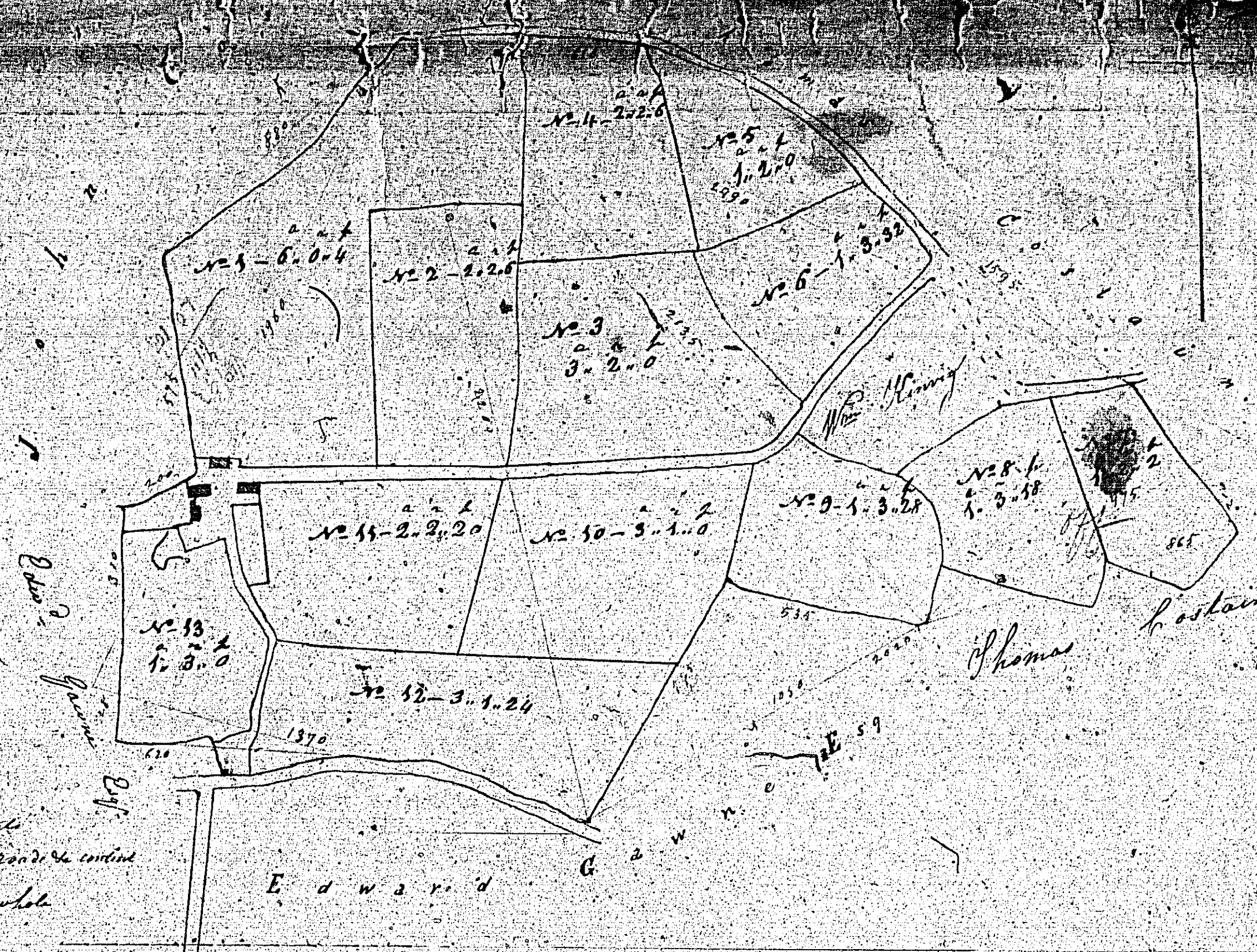


Plan of the Estate of *Shallaghenny*
Arbory in the Parish of Arbory
County of Kerry
 Property of *John Henry Esq*
 Scale of 3 chains to an Inch

Contents of Greater part

- No 1 .. 6.0.4
- 2 .. 2.2.8
- 3 .. 3.2.0
- 4 .. 2.2.8
- 5 .. 3.2.0
- 6 .. 1.8.32
- 7 .. 1.2.2
- 8 .. 1.5.18
- 9 .. 1.3.28
- 10 .. 3.1.0
- 11 .. 2.2.20
- 12 .. 3.1.24
- 13 .. 1.3.0

$34.5.20 + 10.2.0 = 44.7.20 =$ *Leit Content*
 $1.2.20 + 1.0.0 = 2.2.20 =$ *Lowement road & content*
 Total $46.9.0$
 $47.2.0$ *Total of the whole*



House and easements
 and private roads

188



Contents of Upper part

- No 1 .. 3.0.30
- 2 .. 1.1.30
- 3 .. 1.2.0
- 4 .. 0.1.10
- 5 .. 1.0.10
- 10.2.0
- 1.0.0
- Total 15.2.0

Waste ground a.b.
 and private road c.

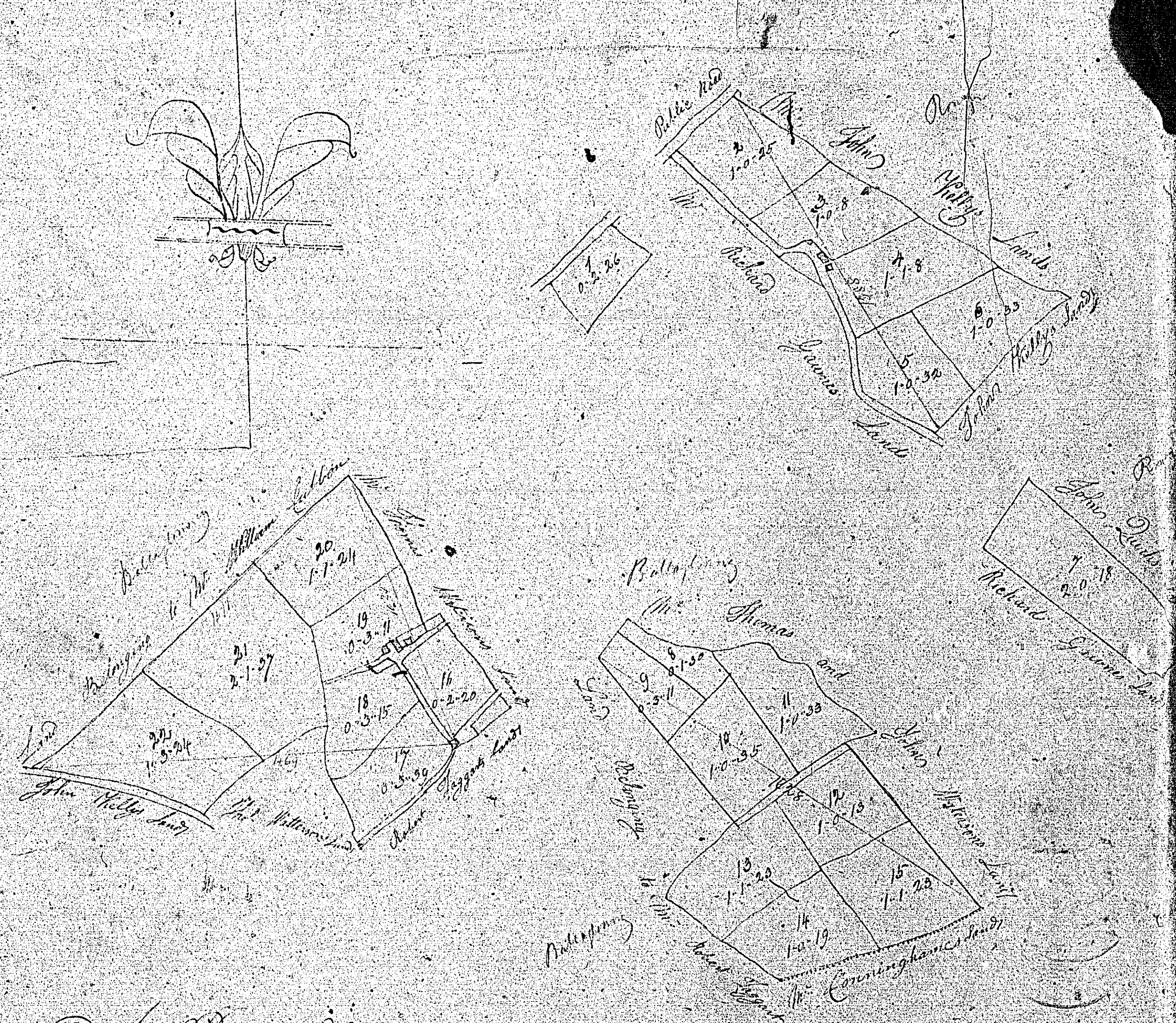
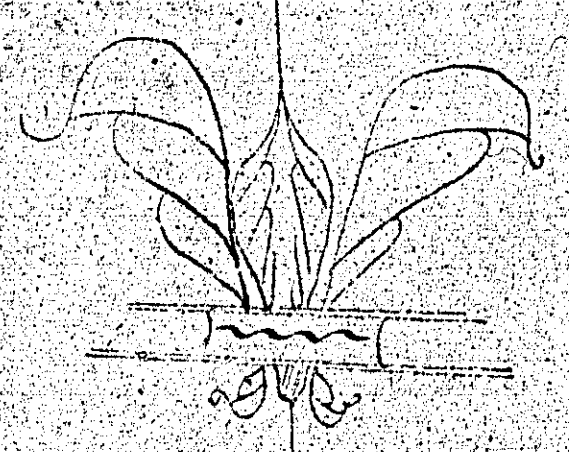
John Henry Esq 1880

17-1-5-21
 2-0-2-56
 3-1-0-5
 4-0-3-17

ISLE OF MAN GOVERNMENT: GENERAL REGISTRY
 TITHE PLANS: PARISH OF ARBORY
 Original coloured (decorative) 1:30

No plans numbered

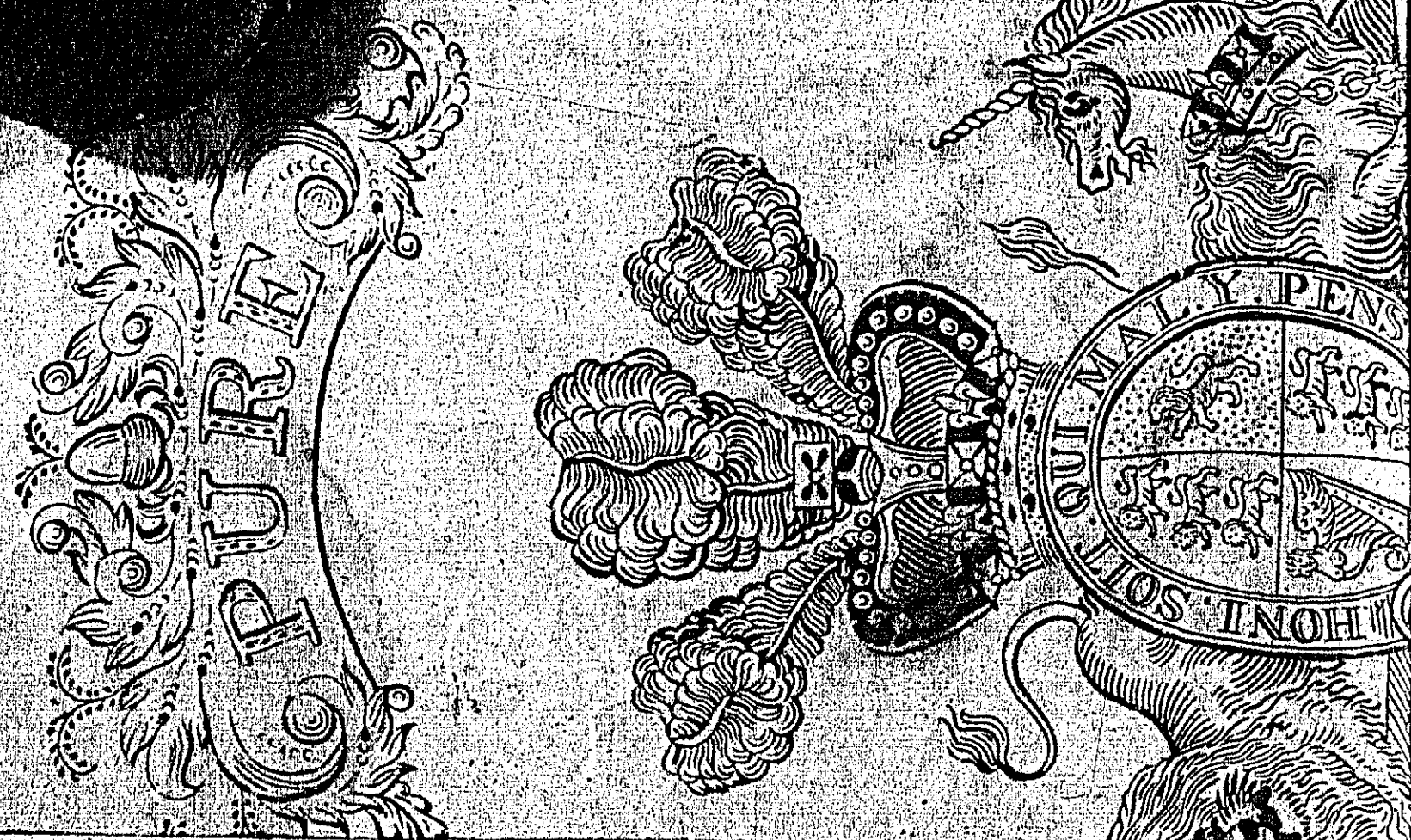
111 of 112



A Plan and Survey of part of Henric and part of both Henric and the Parish of St. Mary the Bishop of the Town of Henric by Daniel Holly of Henric in the year 1710

Expenses			
	£	s	d
Field Survey	25	2	4
Printed Maps	0	2	32
Tables	0	0	20
Amuse	0	1	20
Total	25	4	14

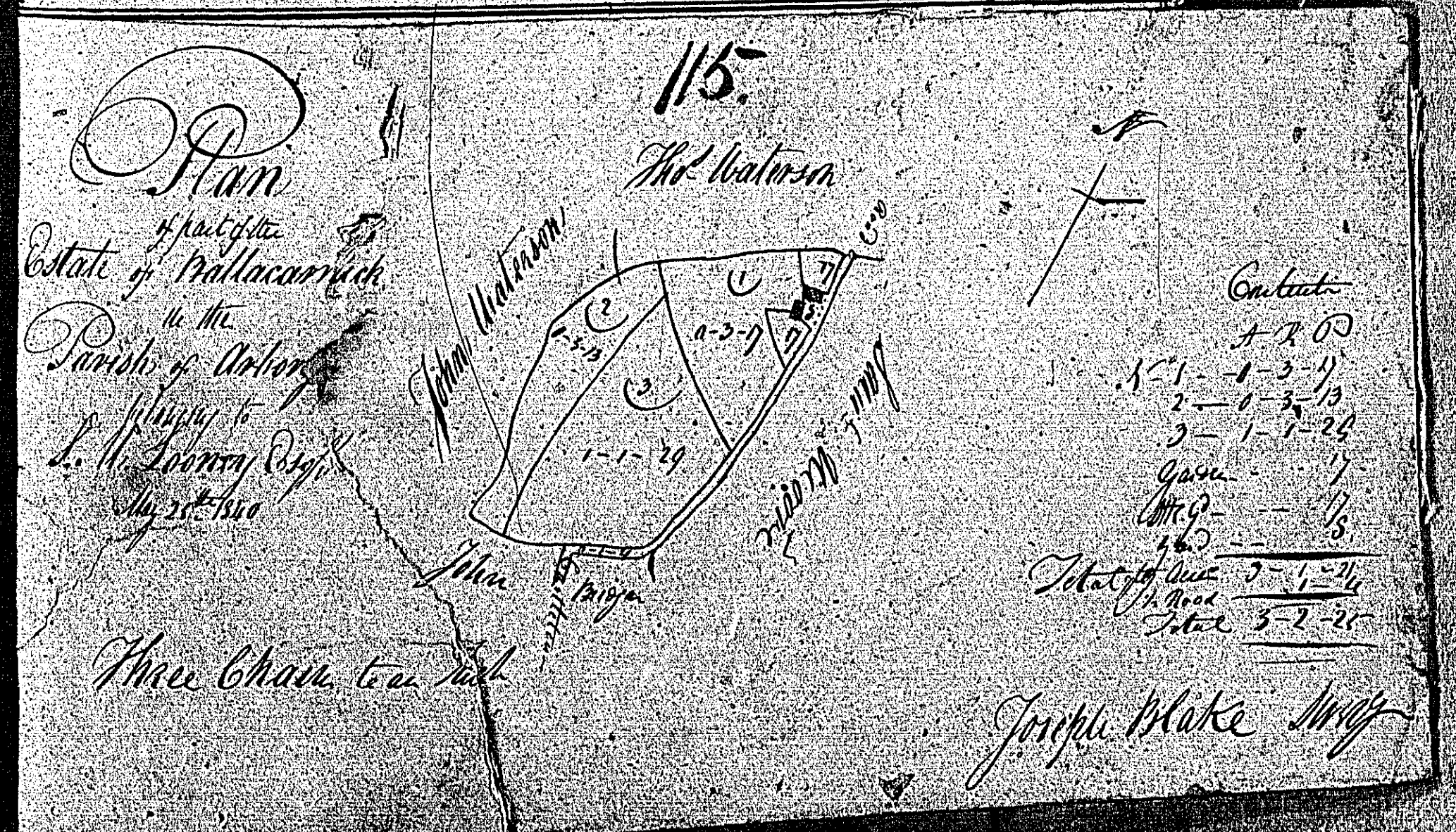
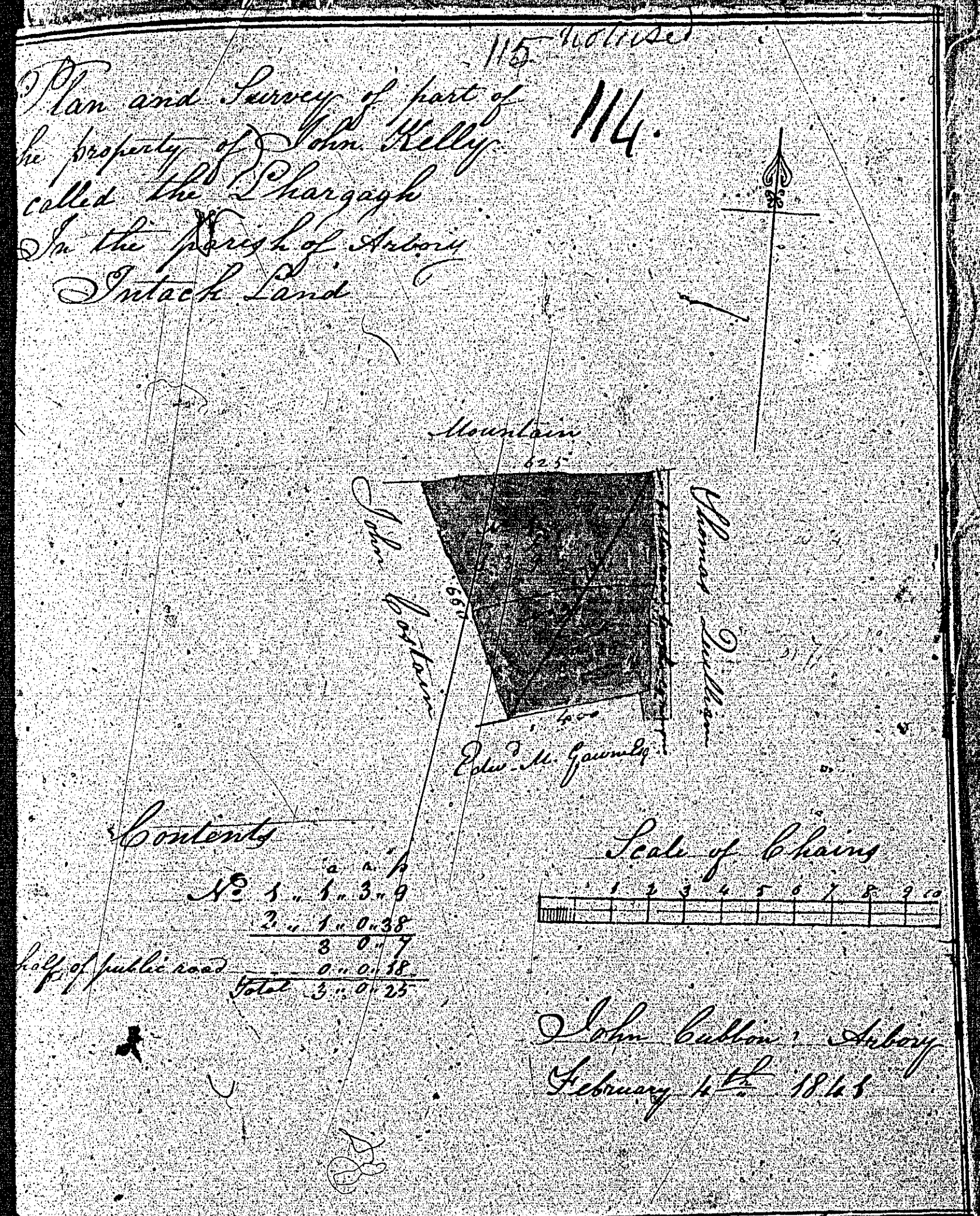
Scale of 1/2 inch to an acre



ISLE OF MAN GOVERNMENT: GENERAL REGISTRY

TITHE PLANS: PARISH OF ARBORY

- 114 Original coloured 1.30
- 115 Original monotone, marked

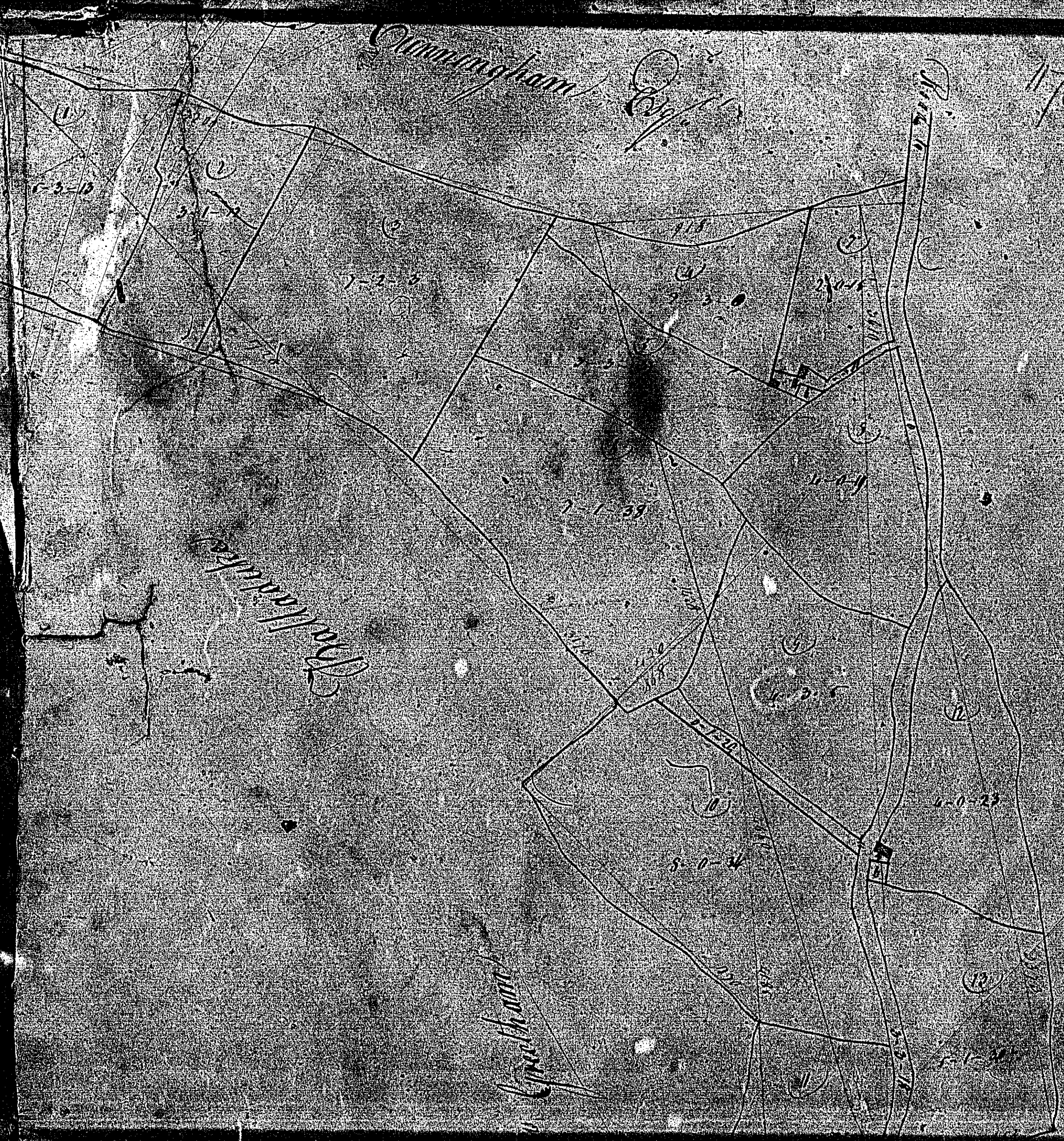


Plan
of the
Estate of *Waltham Abbey*
in the
Parish of *Abbey*
the property
of *John Maddrell*
May 13th 1781

116

Waltham Abbey

Waltham Abbey



1	3
2	12
3	2
4	3
5	3
6	3
7	3
8	3
9	3
10	3
11	3
12	3
13	3
14	3
15	3
16	3
17	3
18	3
19	3
20	3
21	3
22	3
23	3
24	3
25	3
26	3
27	3
28	3
29	3
30	3

John Maddrell
1781

REGISTRY

1:30