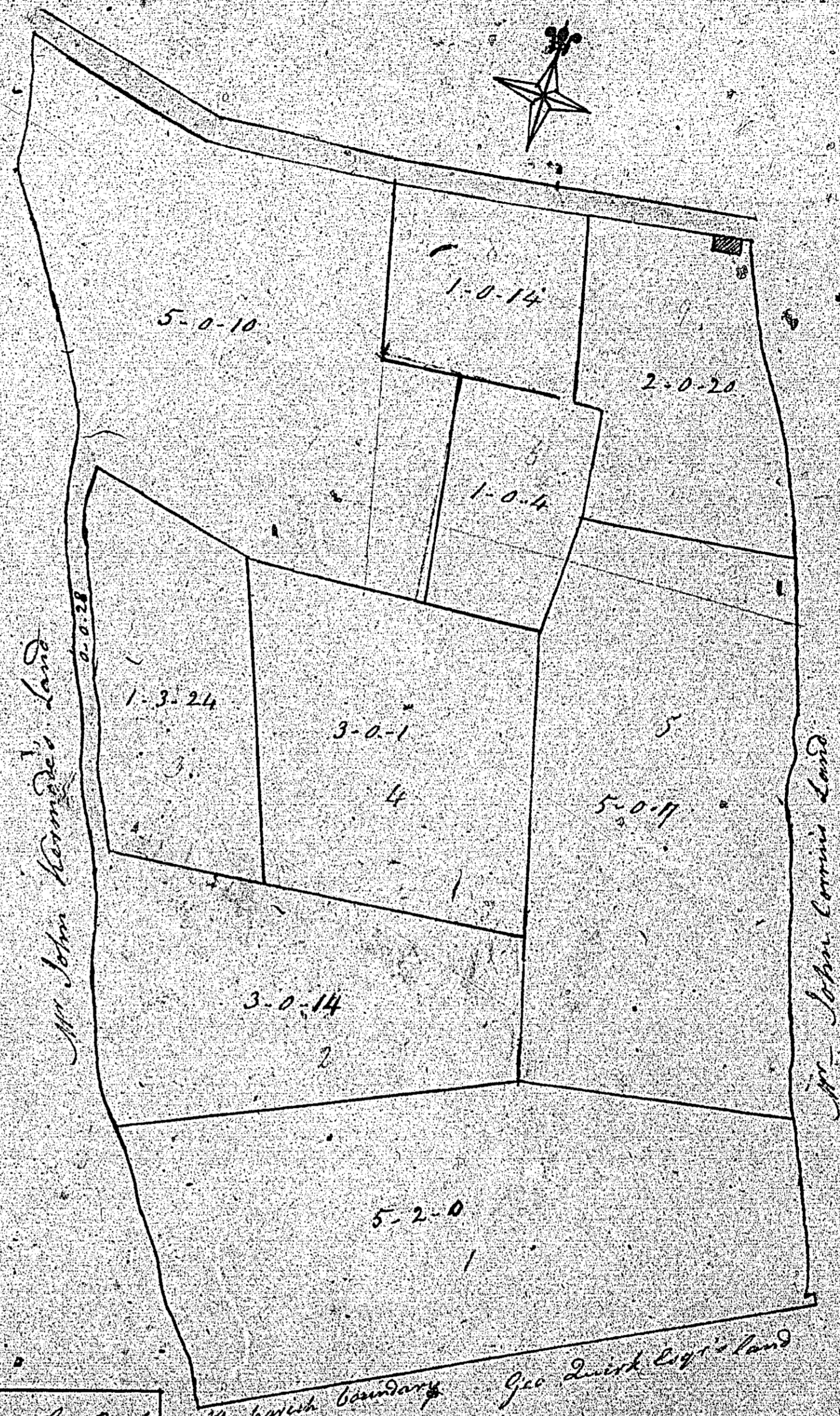


84



No	A	R	P
1	5	2	0
2	3	0	14
3	1	3	24
4	3	0	1
5	5	0	11
6	1	0	14
7	5	0	10
8	1	0	14
9	2	0	20
<u>Road</u>	<u>28</u>	<u>0</u>	<u>6</u>

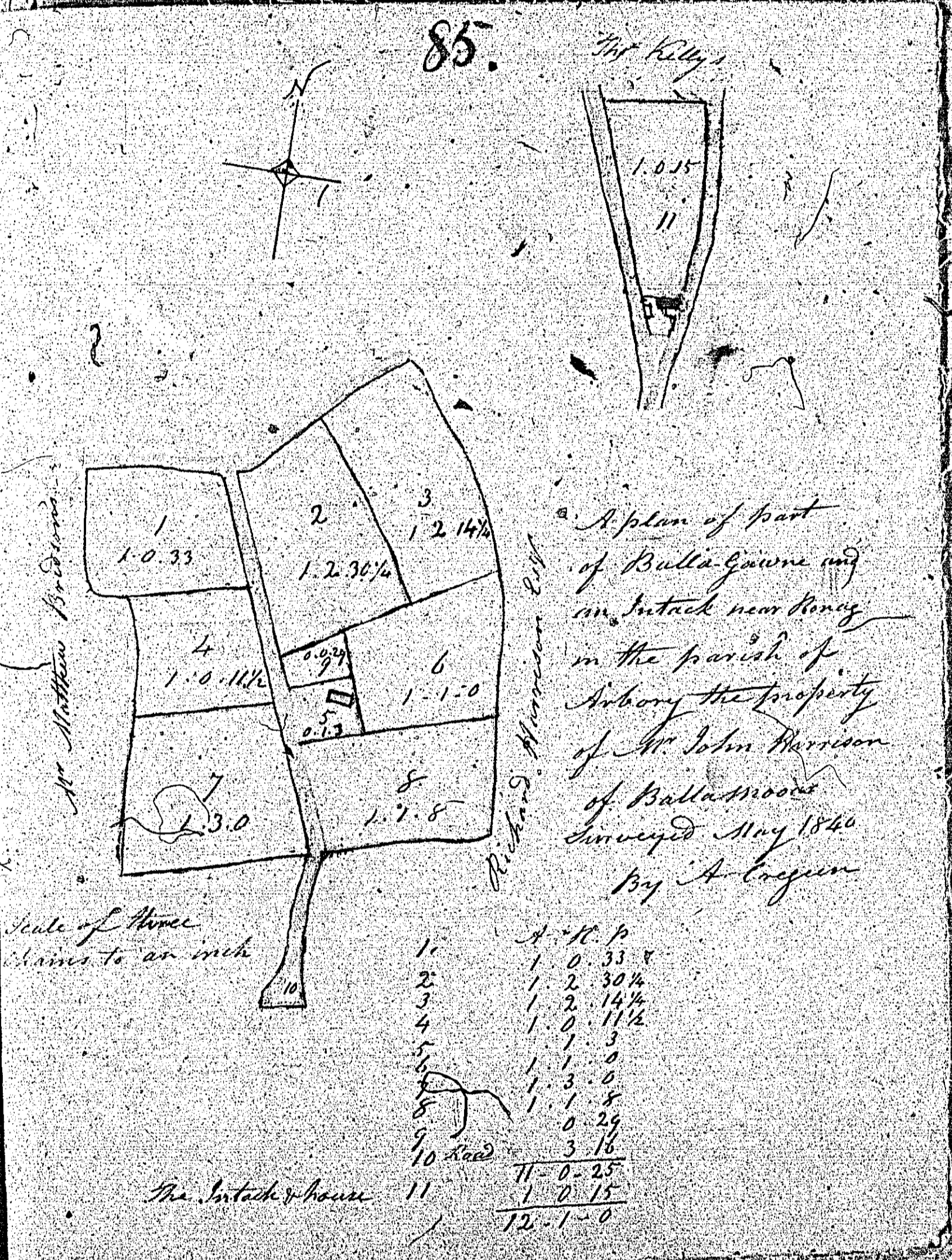
The parish boundary Geo Quirk Esq's land
 Ballinabobert in Ballincormick in the
 parish of Arbery the property of
 the Rev John Edward Harrison
 Surveyed 1807 by A. Greegan

Scale of two chains to the inch

86

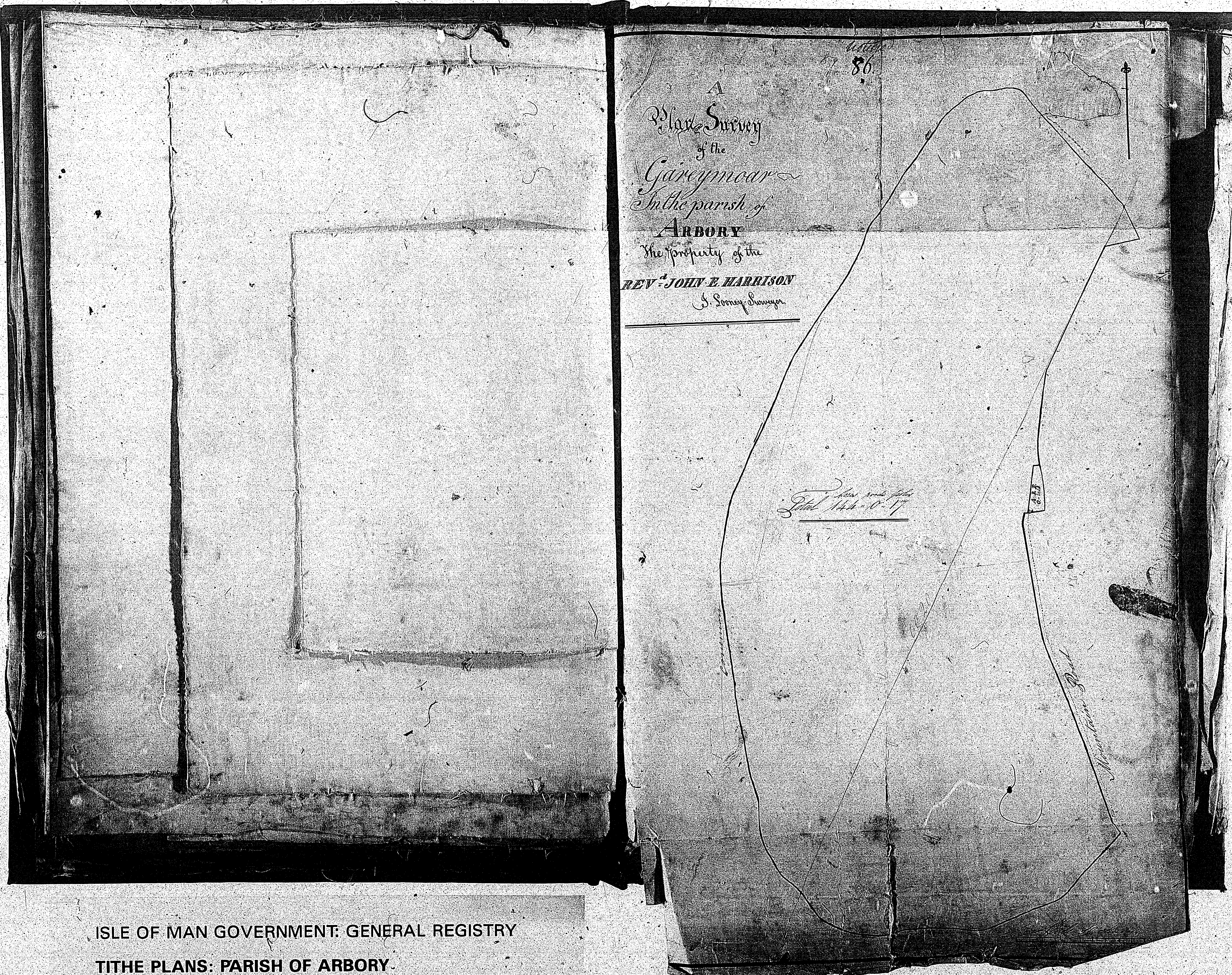
A
Plan Survey
of the
Gareymear
In the parish of

85.



0.1.15

0.1.15



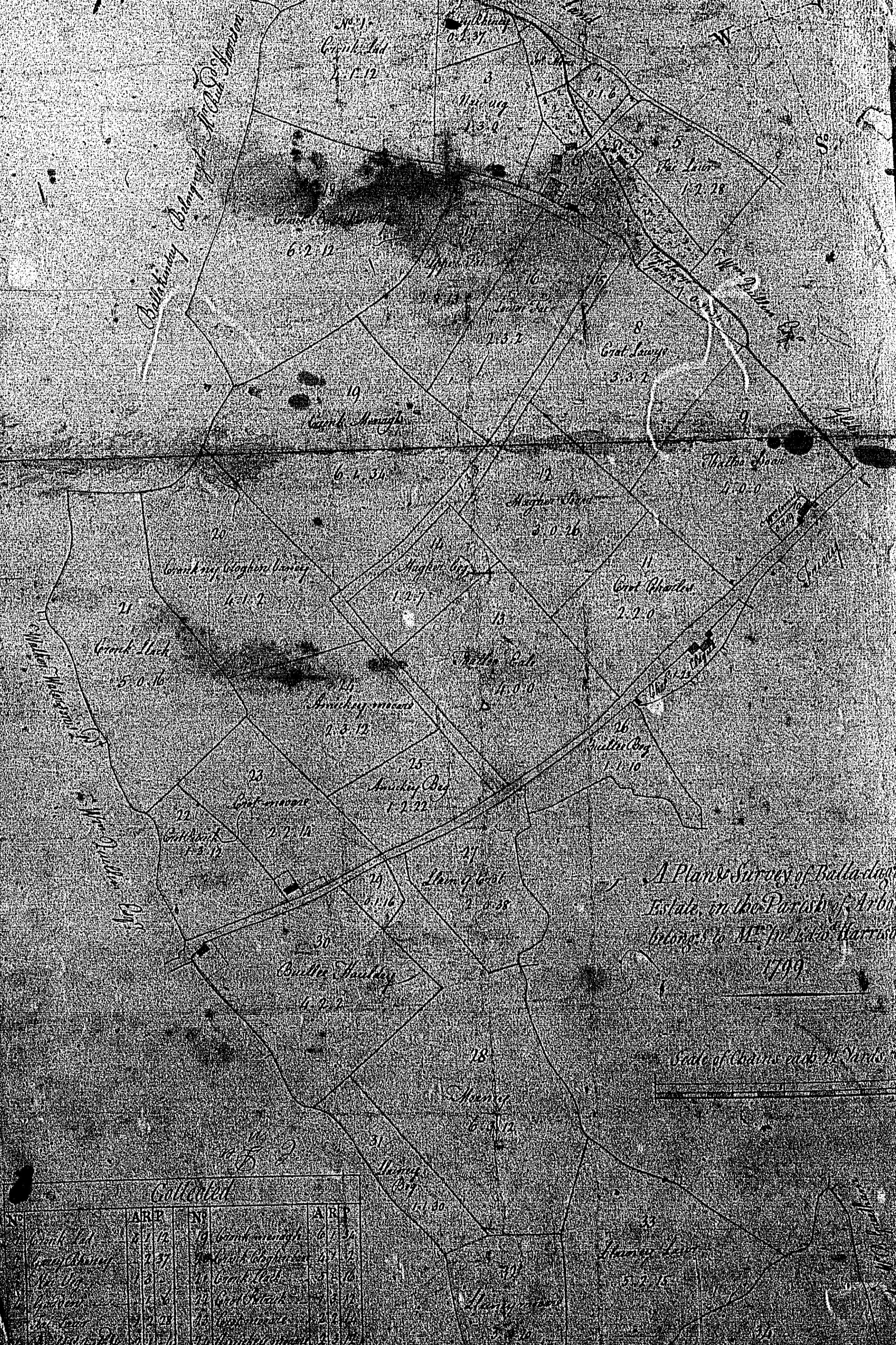
A
Plan Survey
of the
Glebe of the
Parish of
ARBORY
the property of the
REV. JOHN E. HARRISON
Surveyor

This plan shows the
Glebe 144.0.17

Mountain Brook

ISLE OF MAN GOVERNMENT: GENERAL REGISTRY
TITHE PLANS: PARISH OF ARBORY.

Volume
87.



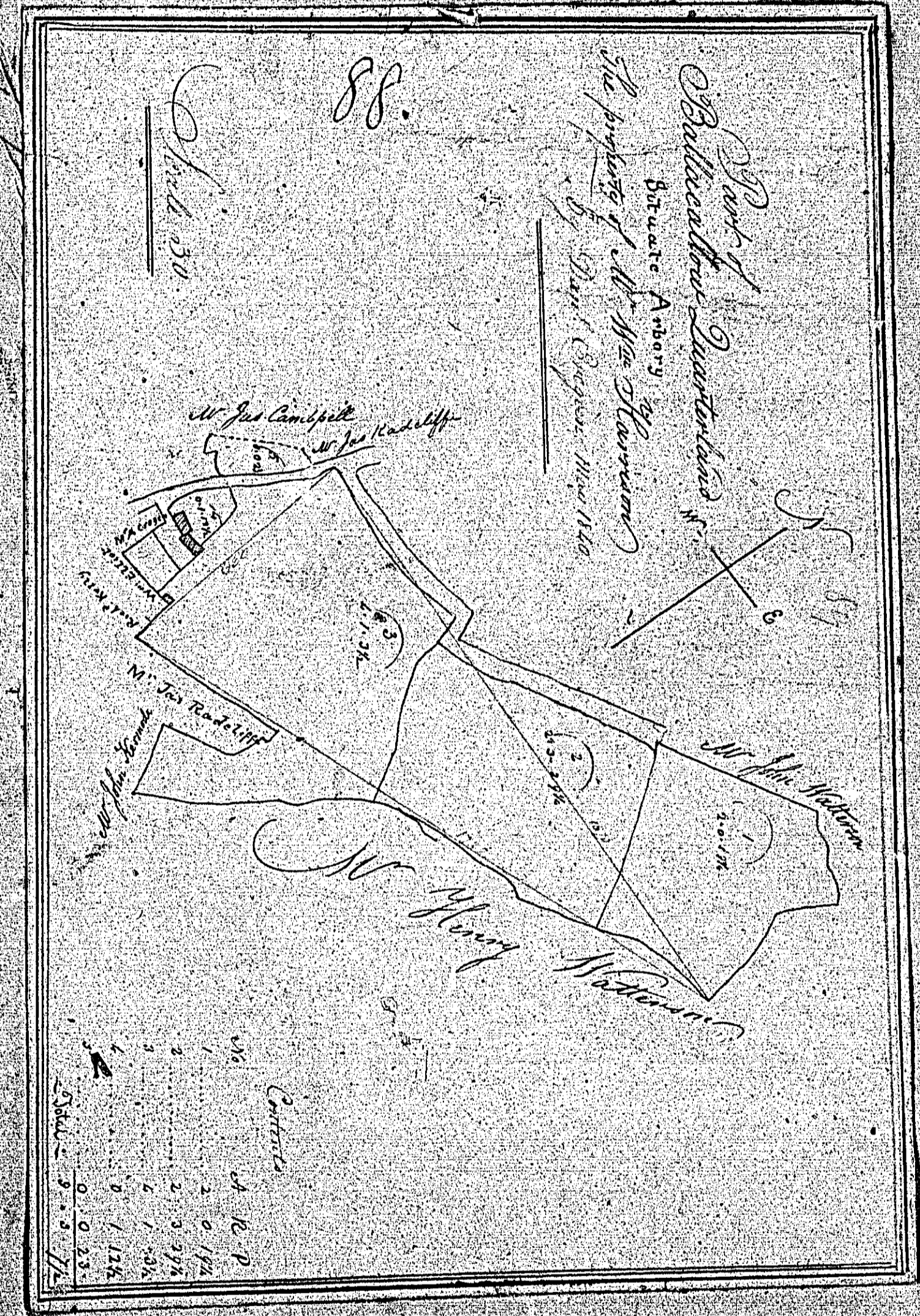
A Plan & Survey of Ballinacree
Estate, in the Parish of Arbores
County of Wick, Ireland
1789

Scale of Chain rods & Feet

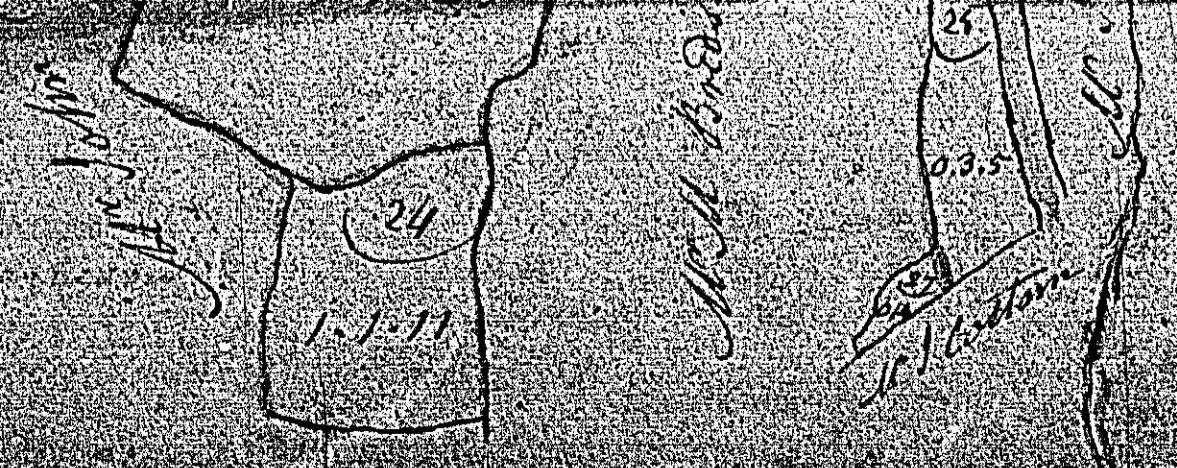
AR	R	P	NS
1	1	1	1
2	2	2	2
3	3	3	3
4	4	4	4
5	5	5	5
6	6	6	6
7	7	7	7
8	8	8	8
9	9	9	9
10	10	10	10
11	11	11	11
12	12	12	12
13	13	13	13
14	14	14	14
15	15	15	15
16	16	16	16
17	17	17	17
18	18	18	18
19	19	19	19
20	20	20	20
21	21	21	21
22	22	22	22
23	23	23	23
24	24	24	24
25	25	25	25
26	26	26	26
27	27	27	27
28	28	28	28
29	29	29	29
30	30	30	30
31	31	31	31
32	32	32	32
33	33	33	33
34	34	34	34
35	35	35	35

90 89.

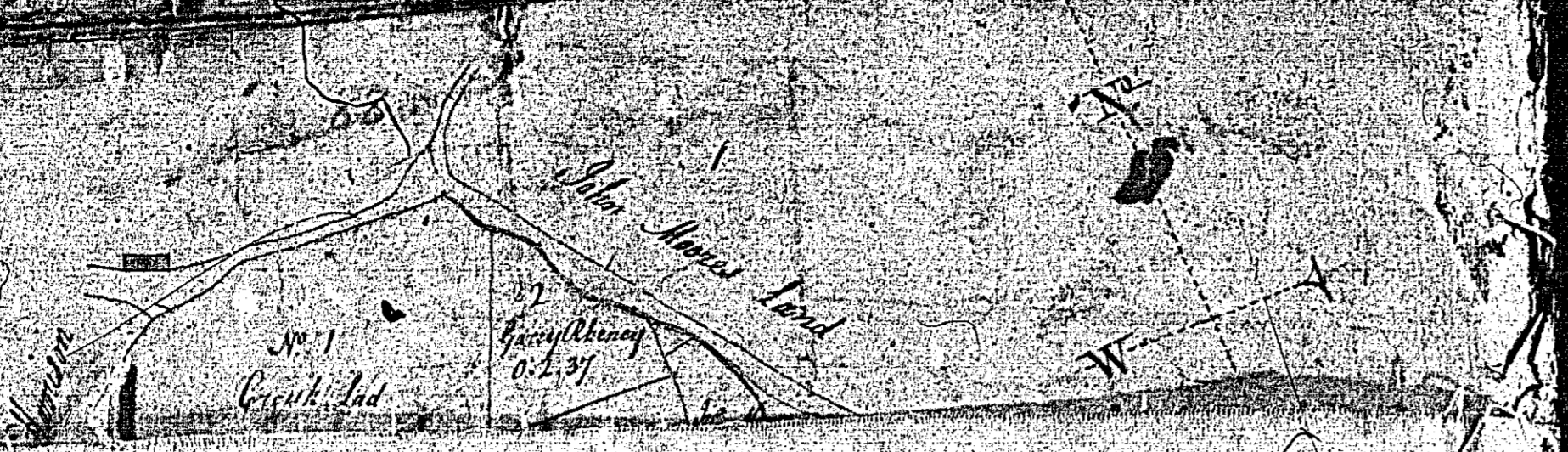
A plan of the Estate of
Bulla-moor in Ardrone Quartermen
And Intack the property of



88.

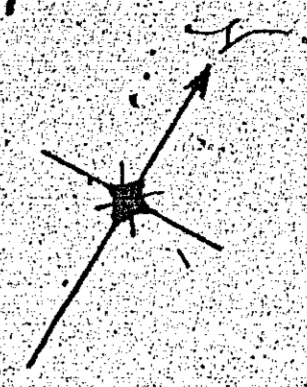


87.

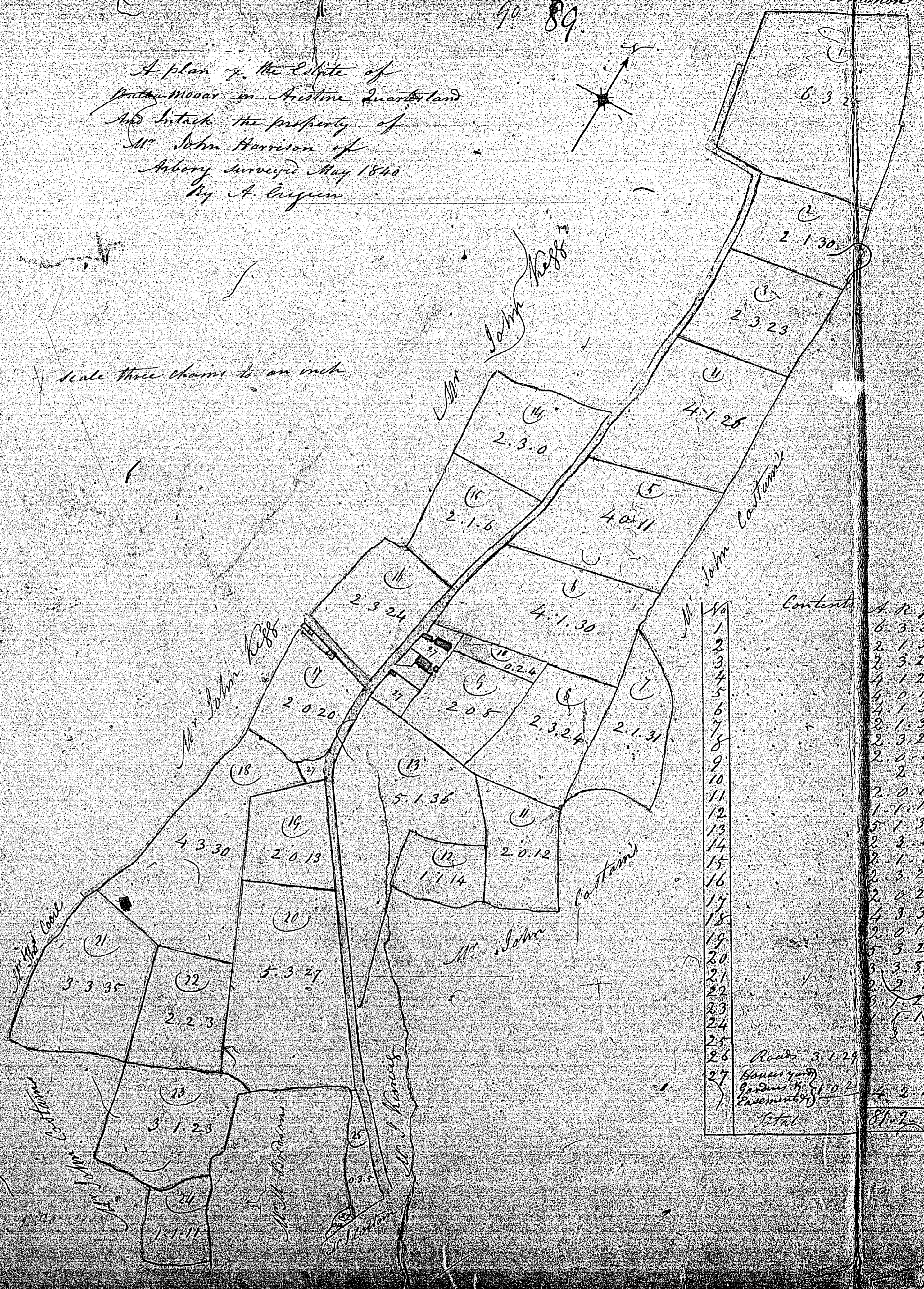


90 89.

A plan of the Estate of
Patrick Moor in Ardstree Quarterland
And Lintack the property of
Mr John Harrison of
Ardery surveyed May 1840
By A. Curzon



Scale three chains to an inch



No	Contents	A. R. P.
1		6 3 25
2		2 1 30
3		2 3 23
4		4 1 20
5		4 0 11
6		4 1 30
7		2 1 31
8		2 3 24
9		2 0 8
10		2 2 4
11		2 0 12
12		1 1 14
13		5 1 36
14		2 3 0
15		2 1 6
16		2 3 24
17		2 0 20
18		4 3 30
19		2 0 13
20		2 0 12
21		3 3 35
22		5 3 27
23		2 2 3
24		3 1 23
25		1 1 14
26	Road	3 1 29
27	House yard Garden & Enclosure	4 2 10
	Total	81 2 4

