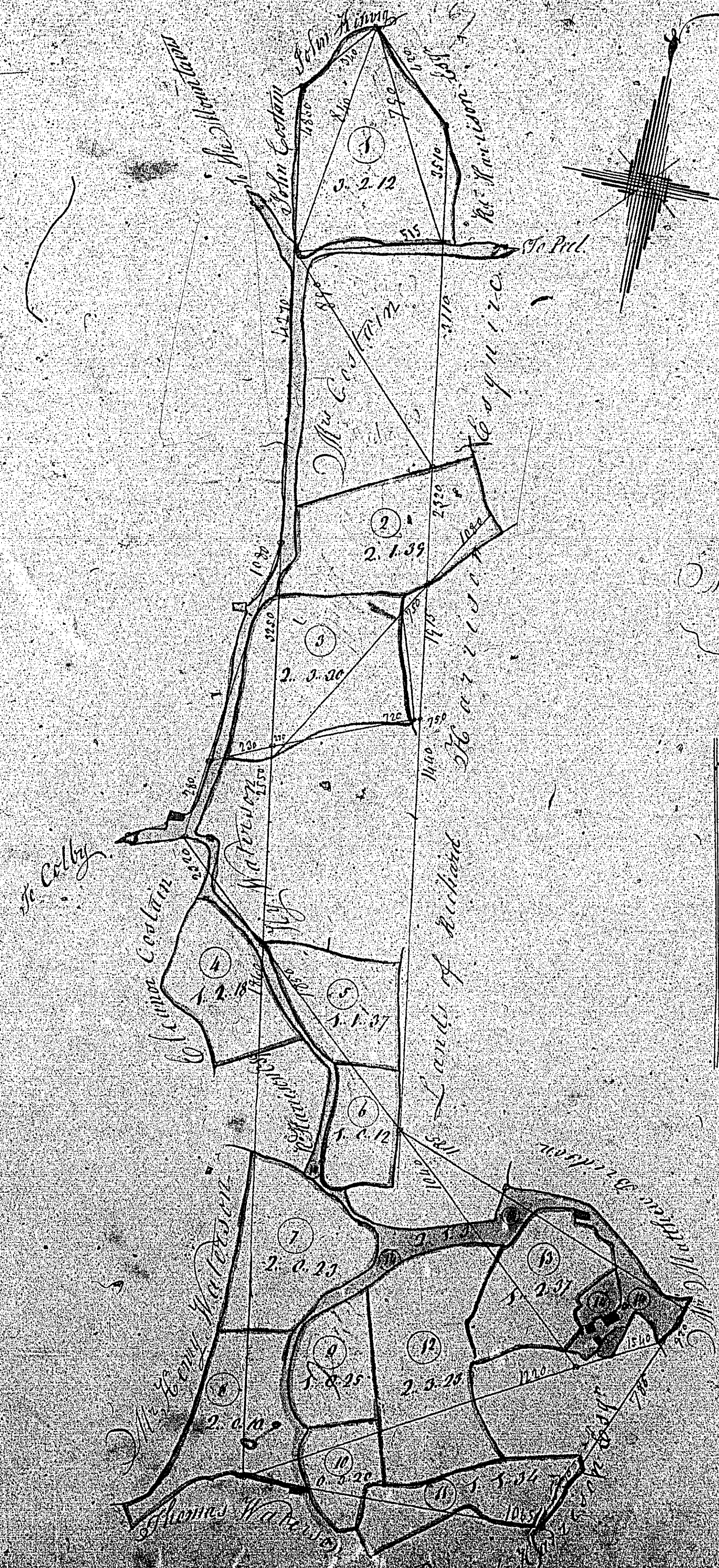


PLAN
of
BALL & KELLEY
in the Parishes
of ARBORY
the property of
His Highness the Duke
1840



Contents

1	2	2
2	1	39
2	3	30
1	2	18
1	7	37
1	2	12
2	0	25
2	0	10
1	0	25
1	0	20
2	3	25
1	2	37
2	1	3
Total		27 3 3

10 - 1 - 19
17 - 0 - 26

Scale of Chains

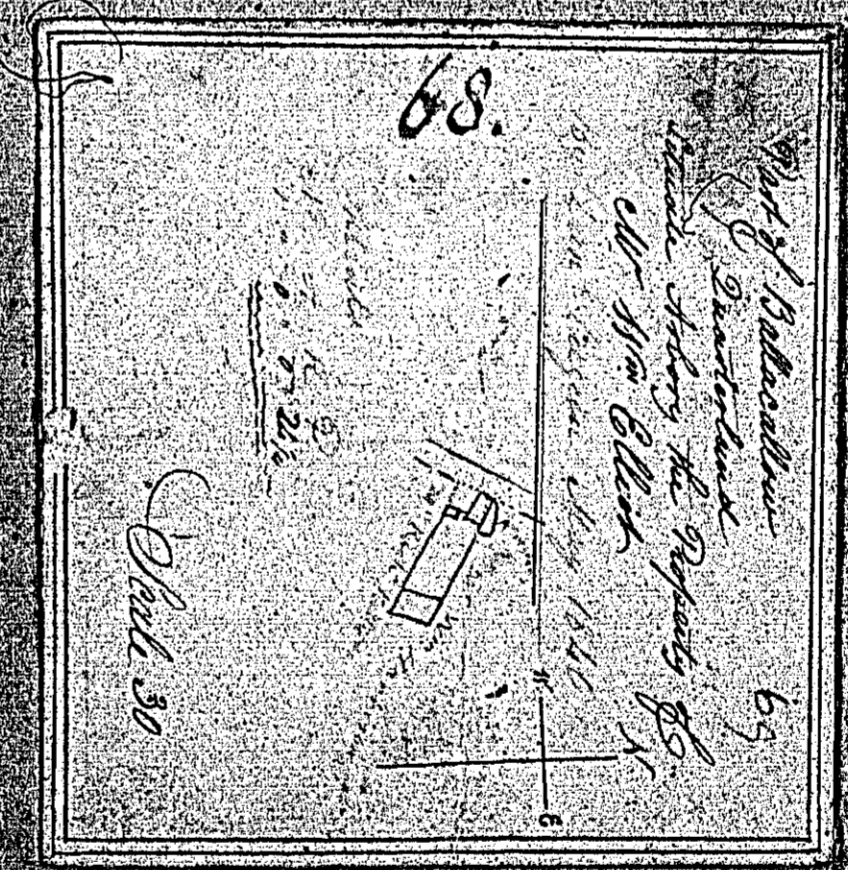
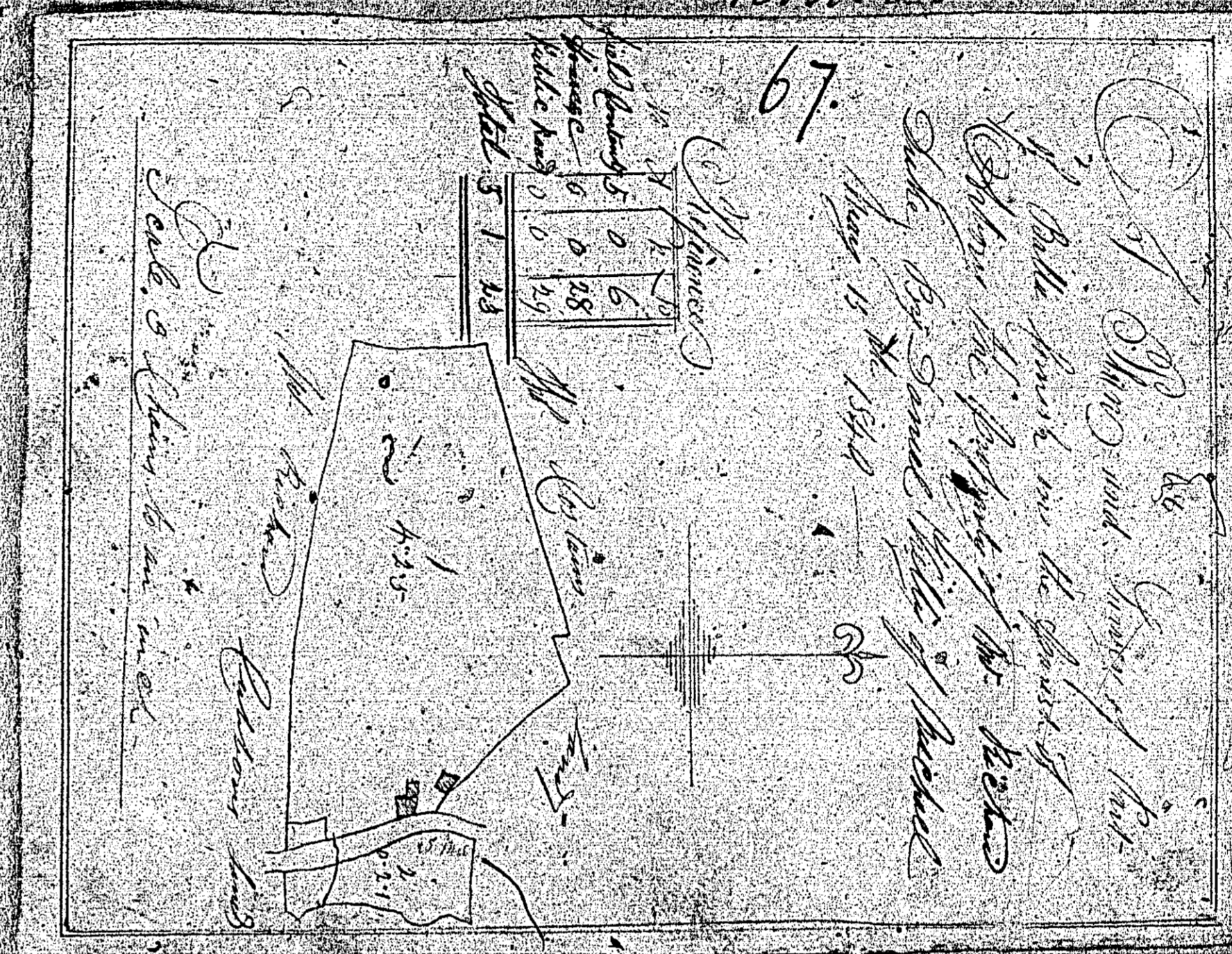
ISLE OF MAN GOVERNMENT: GENERAL REGISTRY

TITHE PLANS: PARISH OF ARBORY

1.30

67 Original coloured (decorative), marked, faint

68 Original coloured (decorative), marked, faint

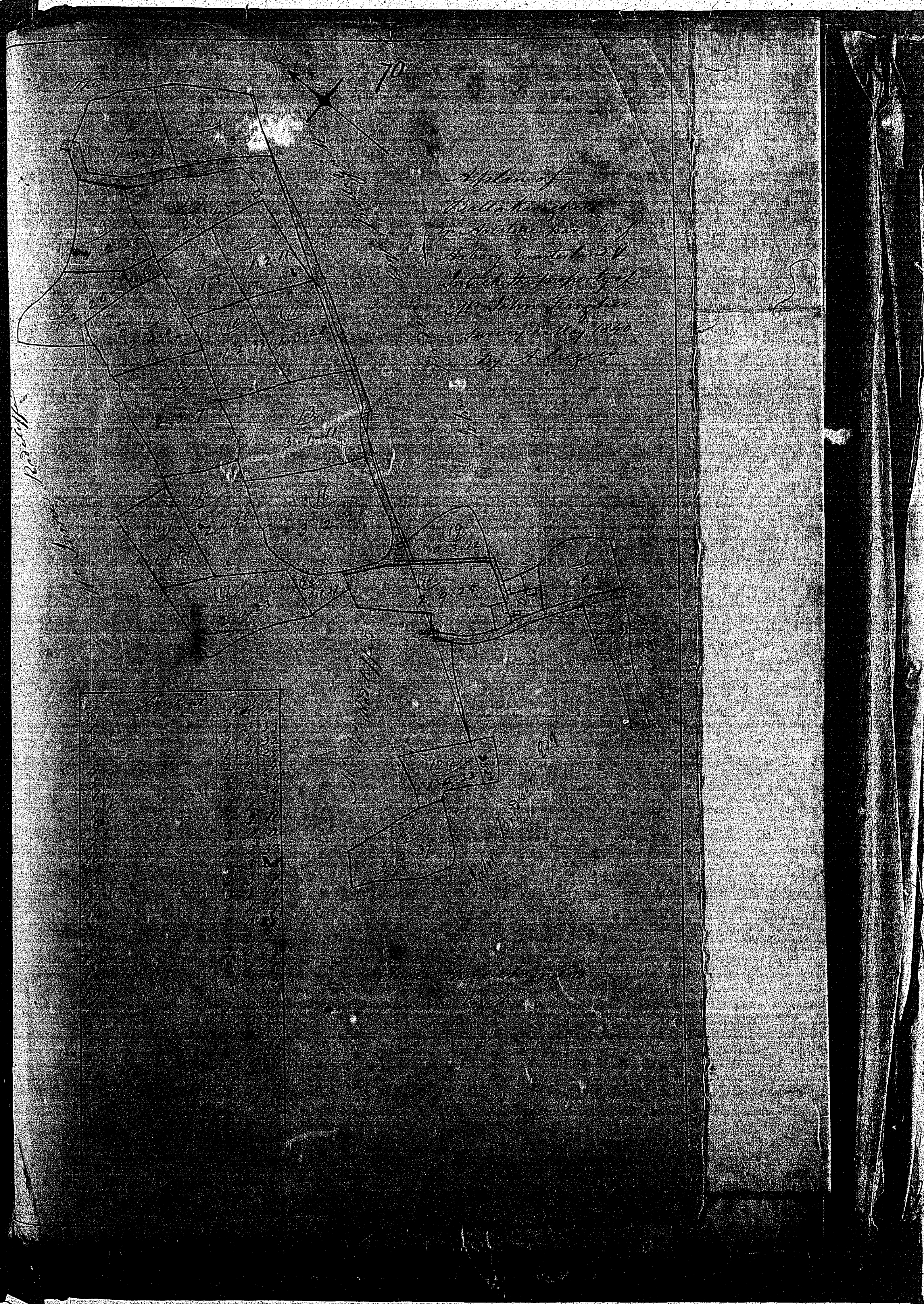
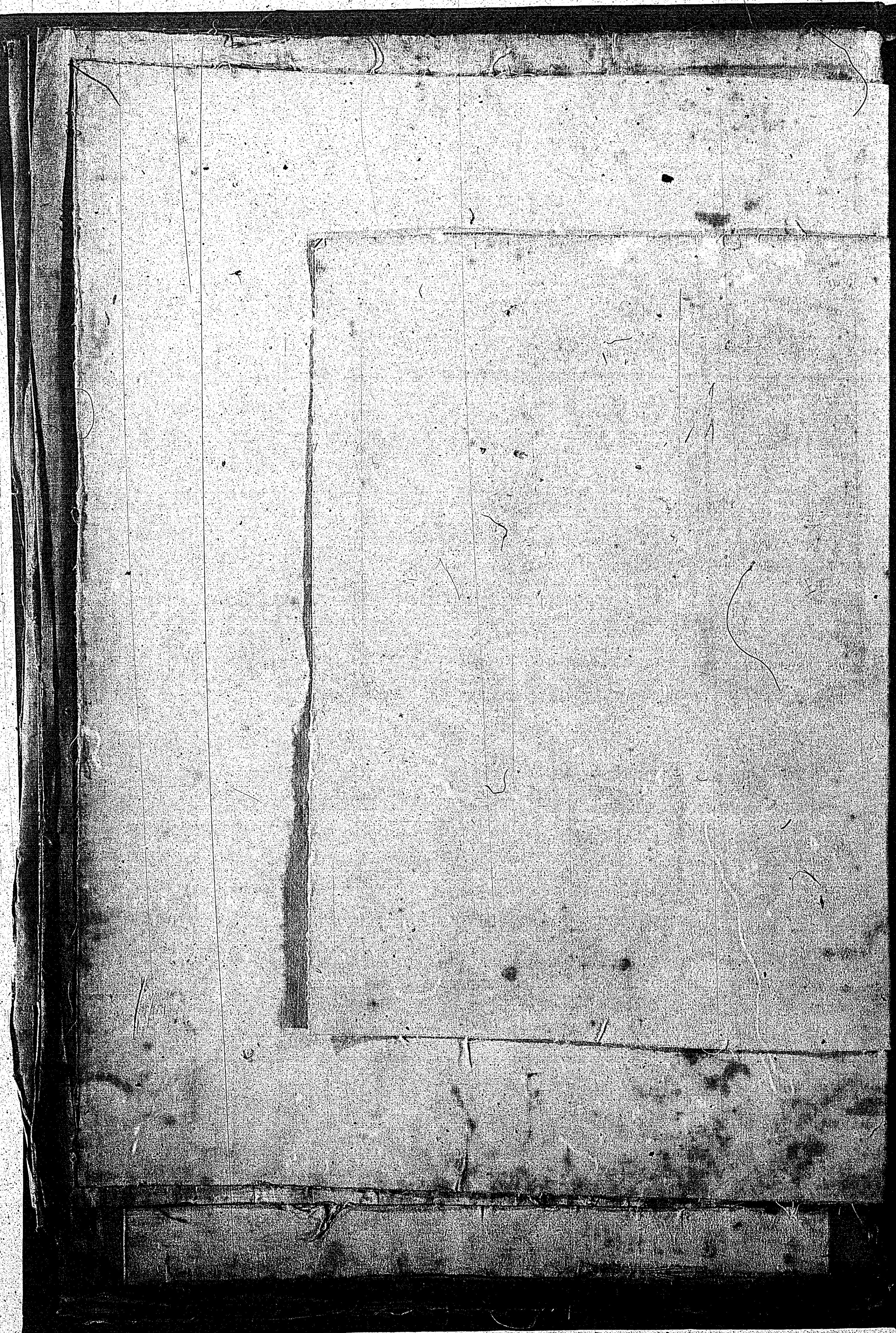




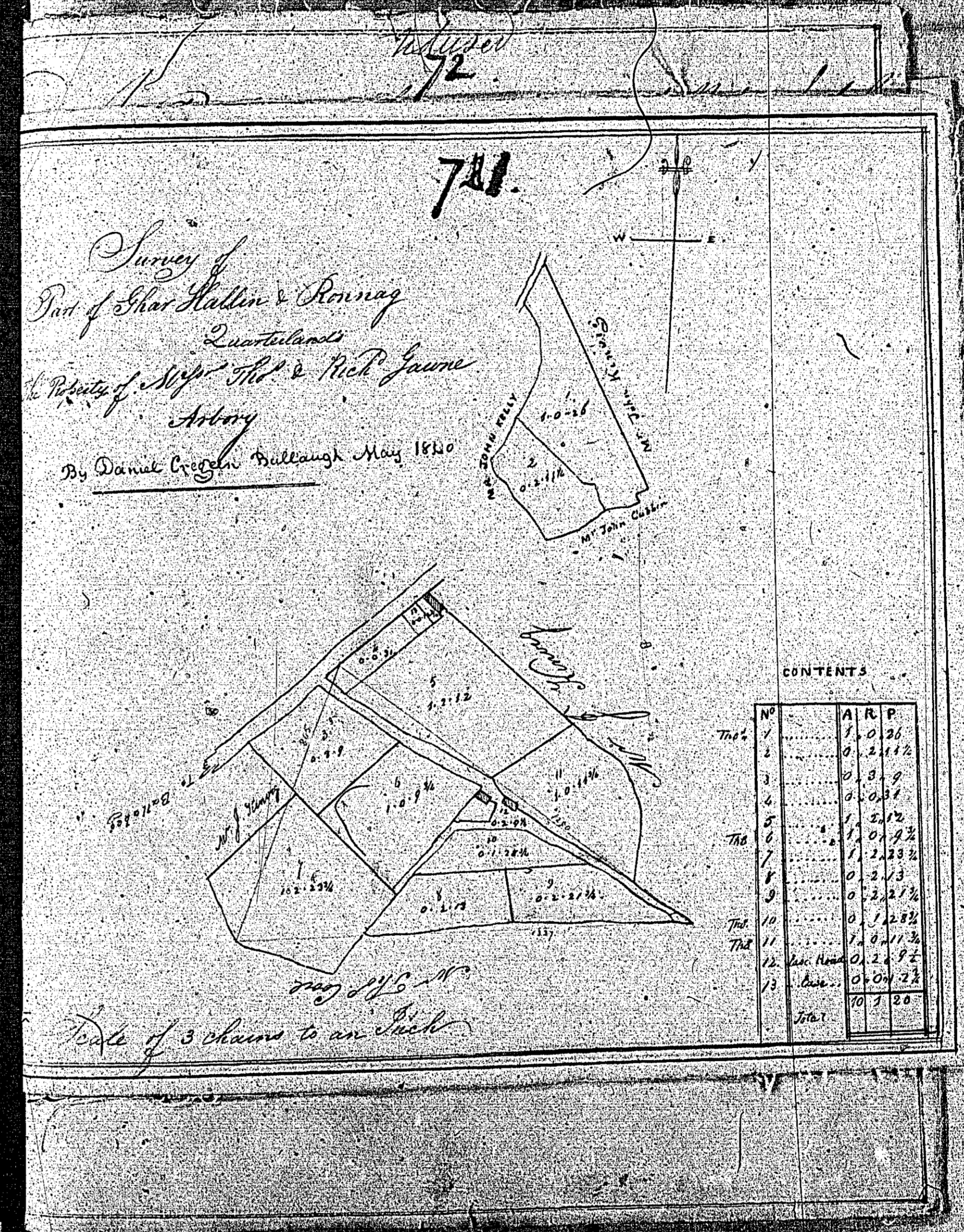
Plan of

No plan numbered

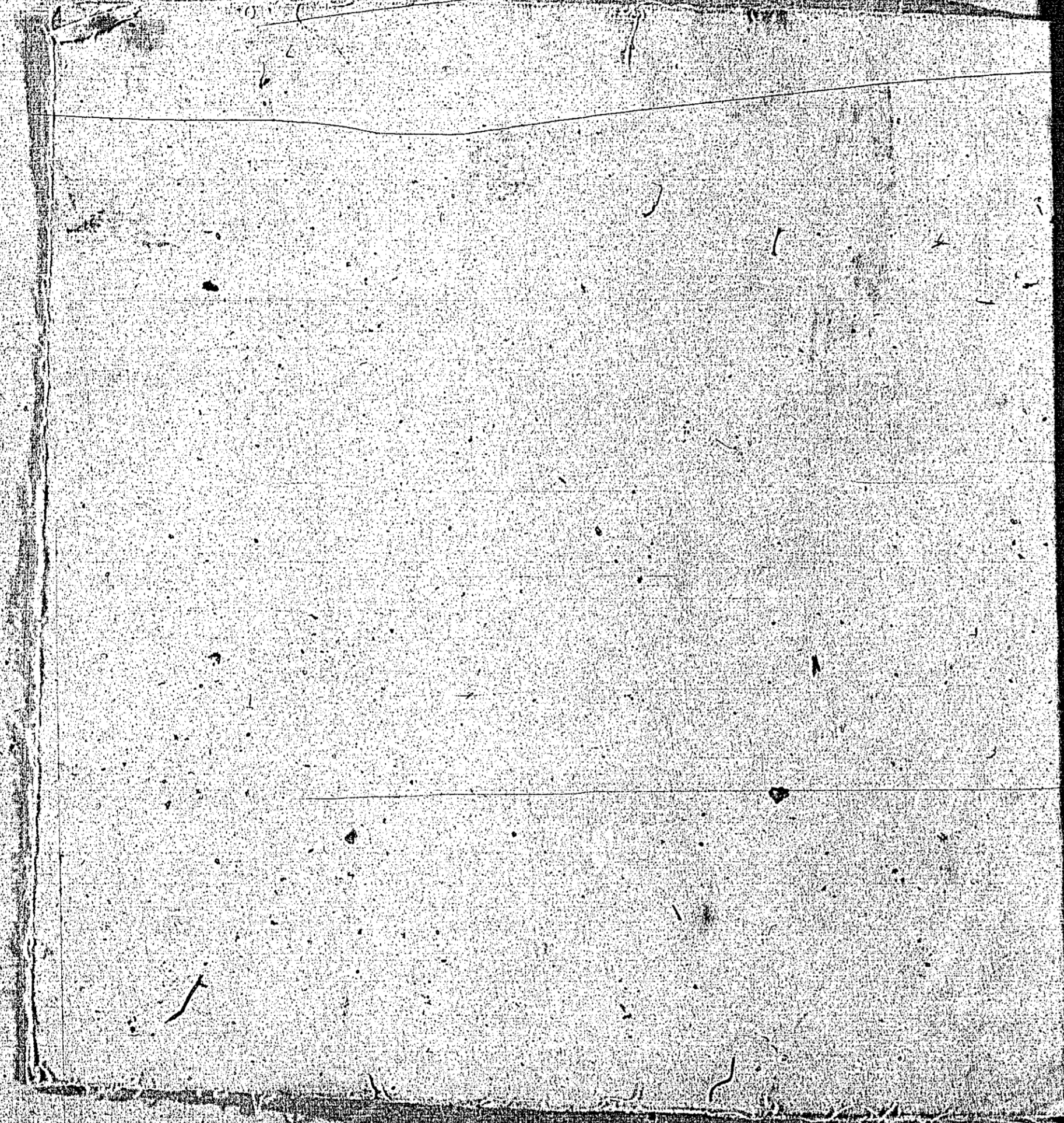
69



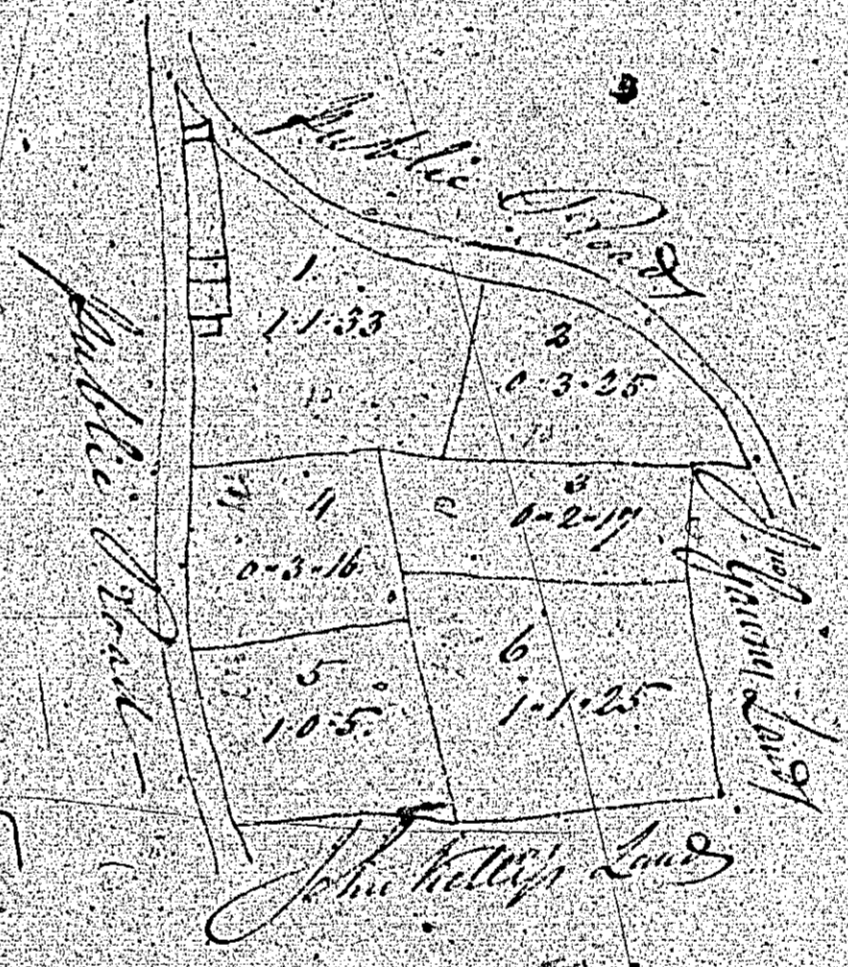
PLAN
 of
 LANDS
 Belonging to
 Edward M. Gaume
 in the Parish of
 Arbury
 Surveyed by S. Paris in
 1838



PLAN
 of
 LANDS
 Belonging to
 Edward M. Gavne
 in the Parish of
 Helony
 Surveyed by J. Paris in
 1838



Witnessed
 72
 A Plan and Survey of parts of Ralla fodal
 in the Parish of Helony the property of
 Mr. Wm Gavne by Daniel Kelly May 19th 1844



Reference
 to
 Cont. 6-1-28
 Cont. 6-0-24
 Cont. 6-1-39
 6-0-24

Scale 3 Chains to an Inch

