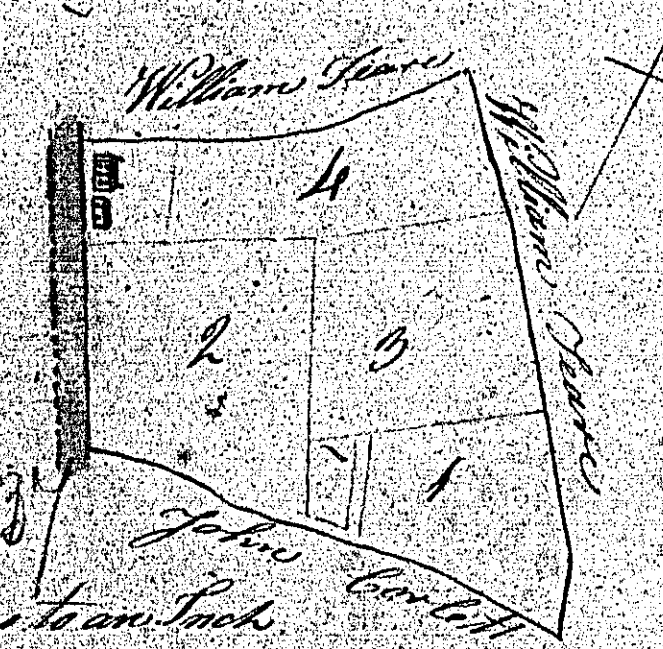


*A Plan and Survey of A part  
of Ballacholum in the parish of  
Andros the property of  
Thomas Stephen taken March 21  
1840 By Alfred Hemmick*

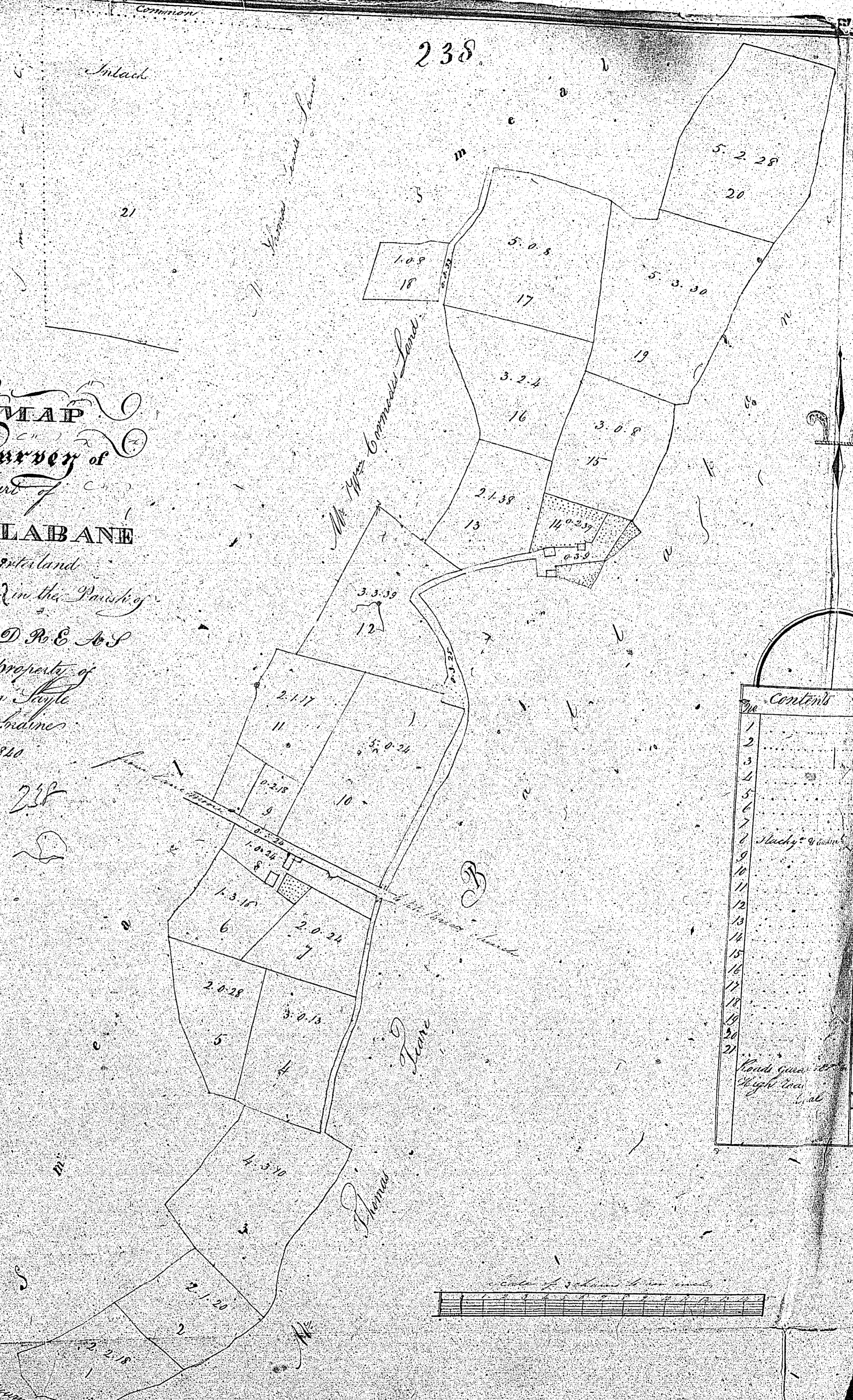
- Contents*  
*N<sup>o</sup>. A. B. C.*  
 1 - 0 - 3 - 28  
 2 - 1 - 1 - 10  
 3 - 0 - 3 - 38  
 4 - 0 - 3 - 20  
 Garden & Ground 0 - 0 - 36  
 (Total) 1 - 12



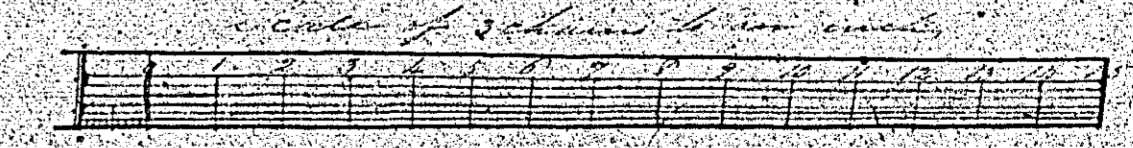
*A Scale of 4 Chains to an Inch*



MAP  
 Survey of  
 a part of  
**BALLABANE**  
 Townland  
 Situate in the Parish of  
 A. N. D. R. E. A. S.  
 the property of  
 Mr. John Doyle  
 by Tho. Holmes  
 Jan'y 1810



No.	Contents	Acres	Roods	Pence
1		2	1	12
2		2	0	20
3		4	0	10
4		3	0	13
5		2	0	27
6		2	3	16
7		2	0	22
8	Steady 9	2	0	22
9		2	2	27
10		3	0	24
11		2	1	17
12		3	3	30
13		2	1	38
14		0	2	38
15		3	0	8
16		3	2	4
17		5	0	8
18		1	0	8
19		5	3	30
20		5	2	30
	Land given to the poor	1	3	7
	High Way	0	1	20
	Land	5	7	35



*Handwritten text in the top left corner of the left page.*

*Common*

238

*Inlaid*

*Handwritten text in a vertical column on the left side of the right page, including the word 'BANI'.*

PREVIOUS IMAGE REPEATED

*Handwritten text at the bottom of the right page.*

Inback

MAP  
and Survey of  
a part of

**BALLABANE**

Quarterland

Situate in the Parish of

A. N. D. R. E. A. S.

the property of

Mr. John Doyle

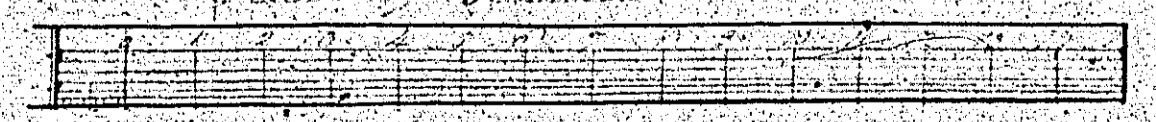
by John Collins

Jan'y 1840

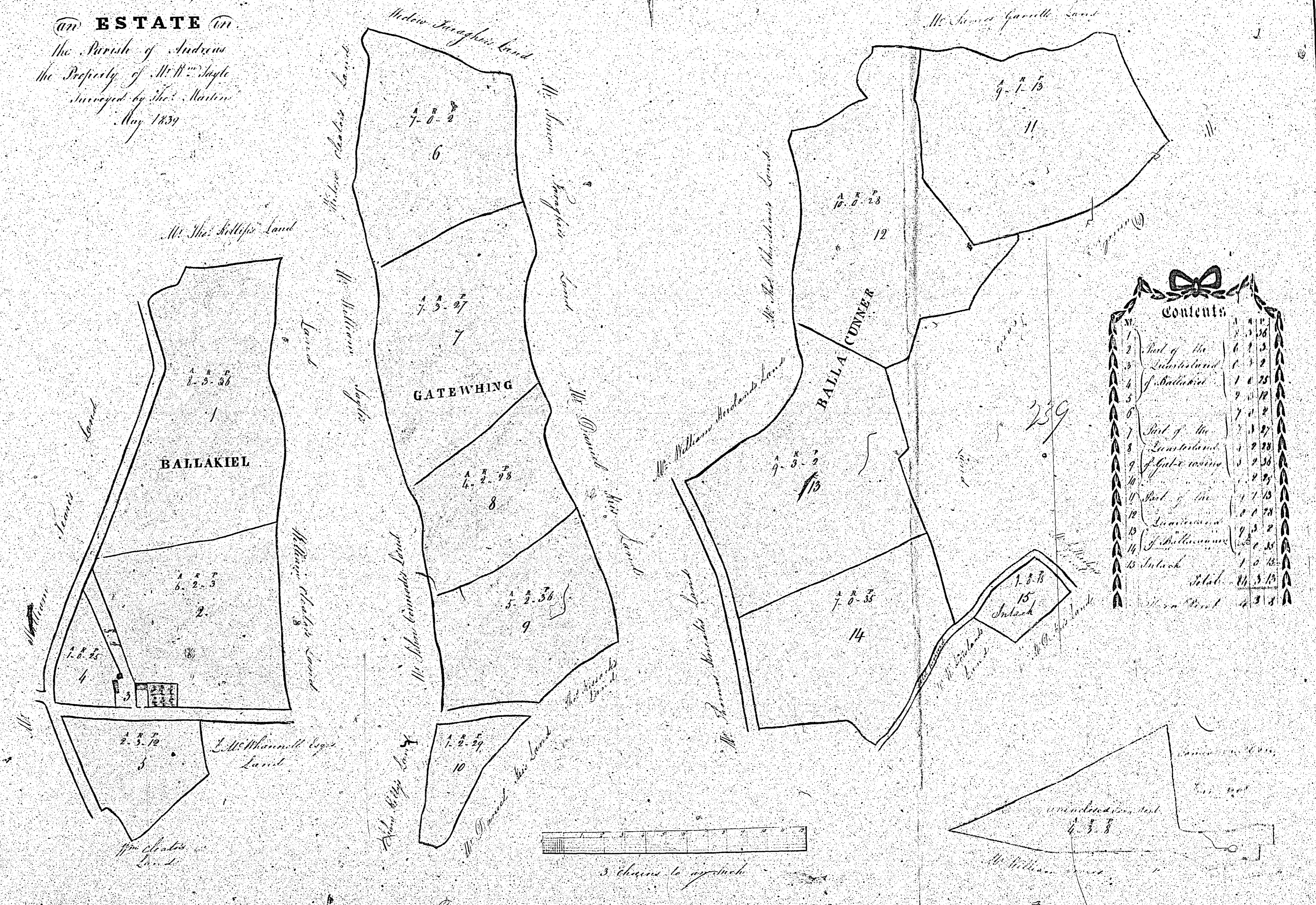
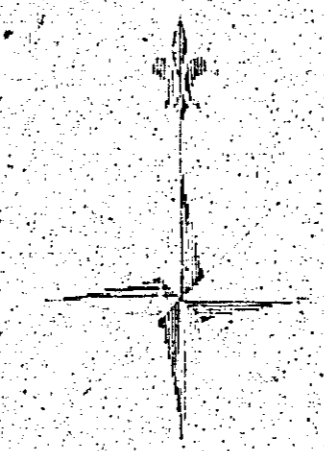
238



Contents	
No.	Acres
1	2 1 17
2	2 1 20
3	2 5 10
4	3 0 13
5	2 0 28
6	1 3 10
7	2 0 34
8	1 0 24
9	0 2 18
10	5 0 24
11	2 1 17
12	3 3 39
13	2 1 38
14	0 2 39
15	3 0 8
16	3 0 4
17	5 0 5
18	1 0 8
19	5 3 30
20	5 2 28
21	4 5 10
Total	
14 3 5	
14 3 5	
14 3 5	

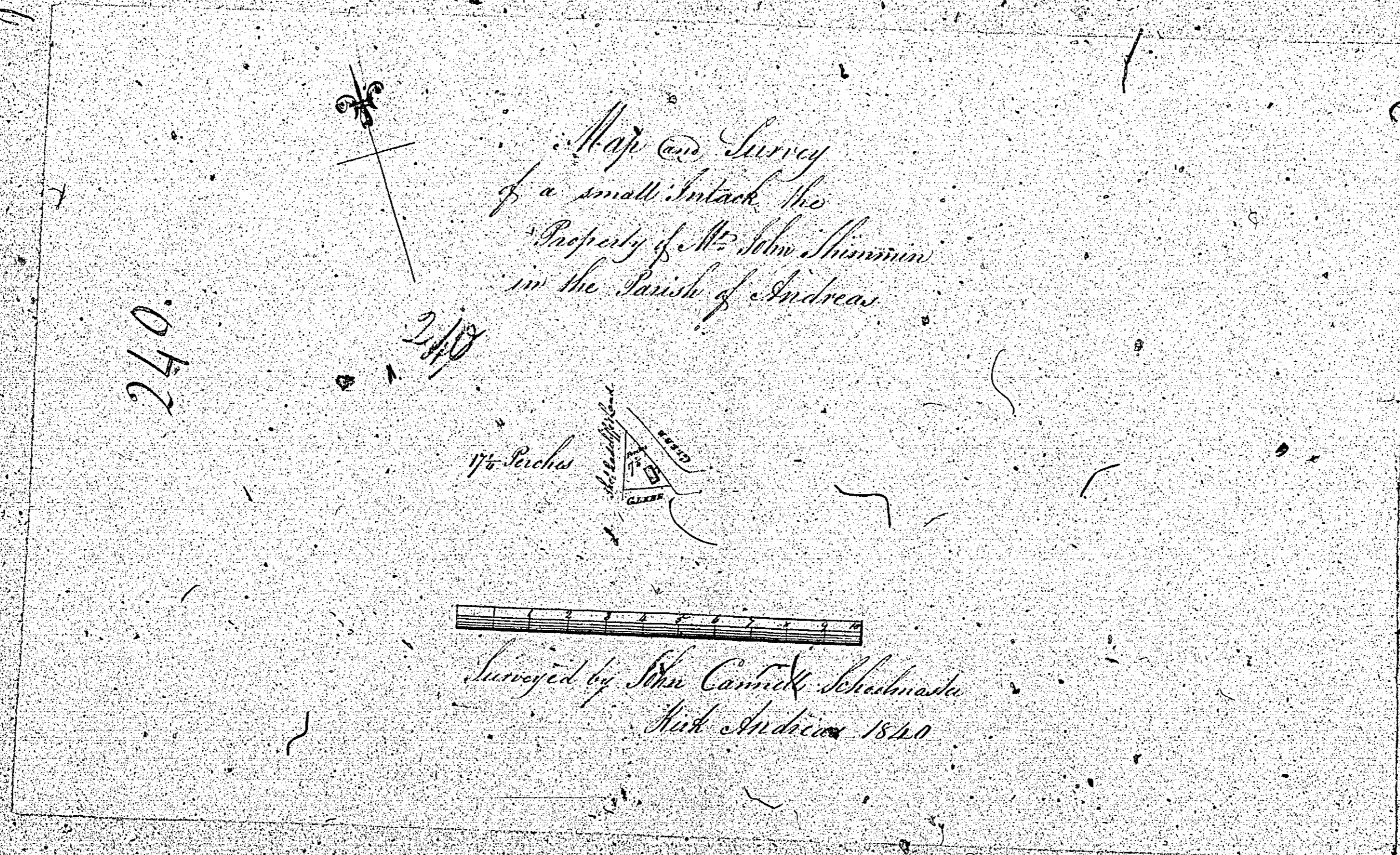


MAP  
and Survey of  
an ESTATE in  
the Parish of Andrews  
the Property of Mr. W. Hoyle  
Surveyed by Tho: Martin  
May 1839



Contents

1	Part of the	1 1/2 3/4
2	Part of the	1 1/2 3/4
3	Part of the	1 1/2 3/4
4	Part of the	1 1/2 3/4
5	Part of the	1 1/2 3/4
6	Part of the	1 1/2 3/4
7	Part of the	1 1/2 3/4
8	Part of the	1 1/2 3/4
9	Part of the	1 1/2 3/4
10	Part of the	1 1/2 3/4
11	Part of the	1 1/2 3/4
12	Part of the	1 1/2 3/4
13	Part of the	1 1/2 3/4
14	Part of the	1 1/2 3/4
15	Part of the	1 1/2 3/4



ISLE OF MAN GOVERNMENT: GENERAL REGISTRY

TITHE PLANS: PARISH OF ANDREAS

Original monotone

1:30