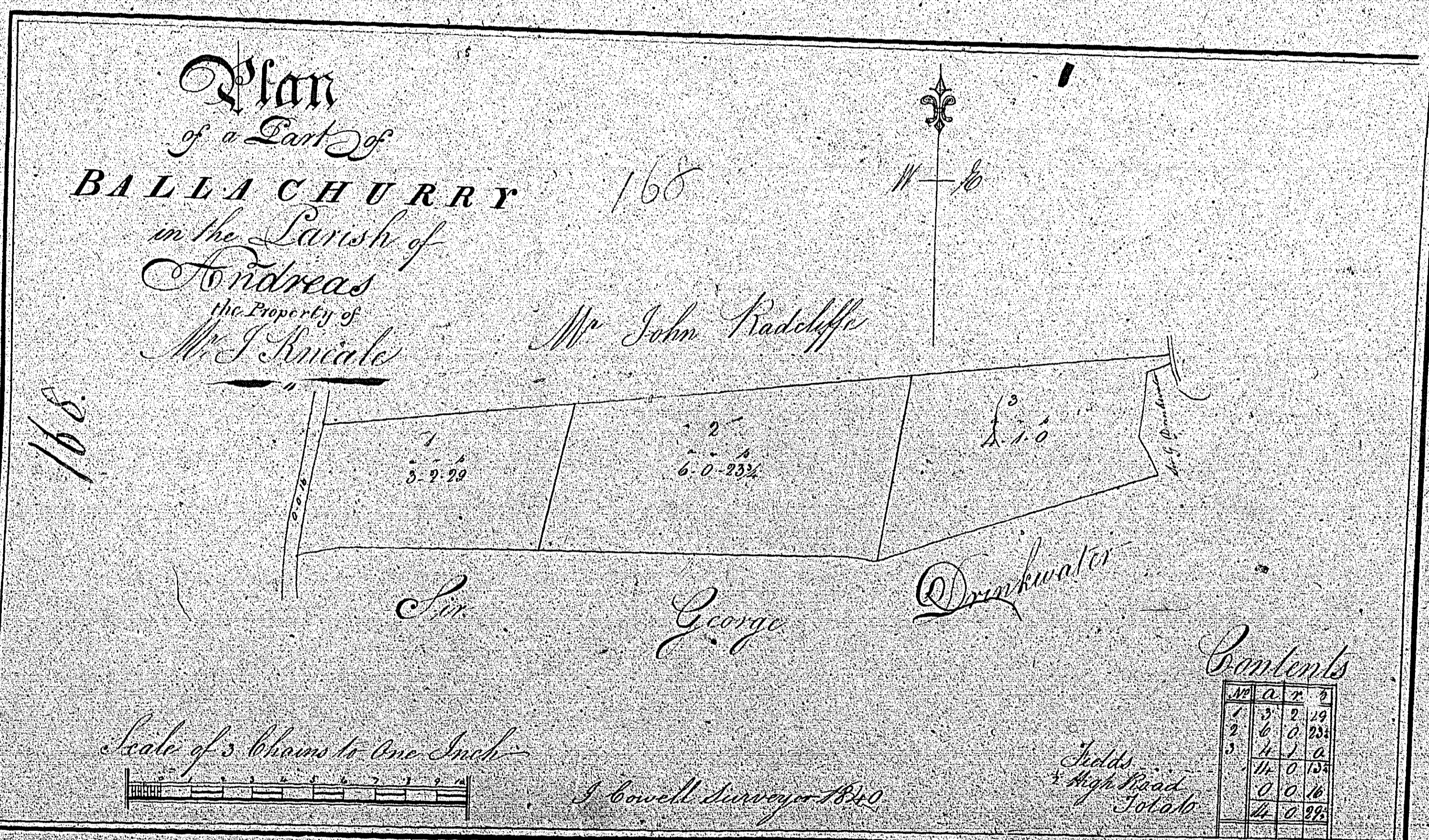


BALLABEG

and part  
of the Quarterland

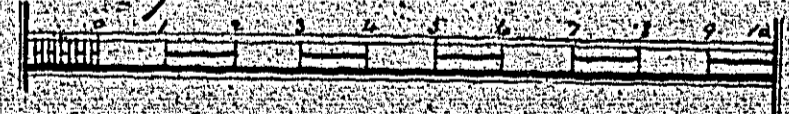
Plan  
of a Part of  
**BALLACHURRY**  
in the Parish of  
**Andreas**  
the Property of  
**Mr. J. Knicate**

168  
Mr. John Radcliffe



168

Scale of 3 Chains to one Inch



J. Cowell Surveyor 1840

Contents

No.	a.	r.	b.
1	3	2	29
2	6	0	23 1/2
3	4	1	0
	11	0	13 1/2
	0	0	16
	4	0	28 1/2

Fields  
High Road  
Totals

ISLE OF MAN GOVERNMENT: GENERAL REGISTRY

TITHE PLANS: PARISH OF ANDREAS

Original coloured (decorative)

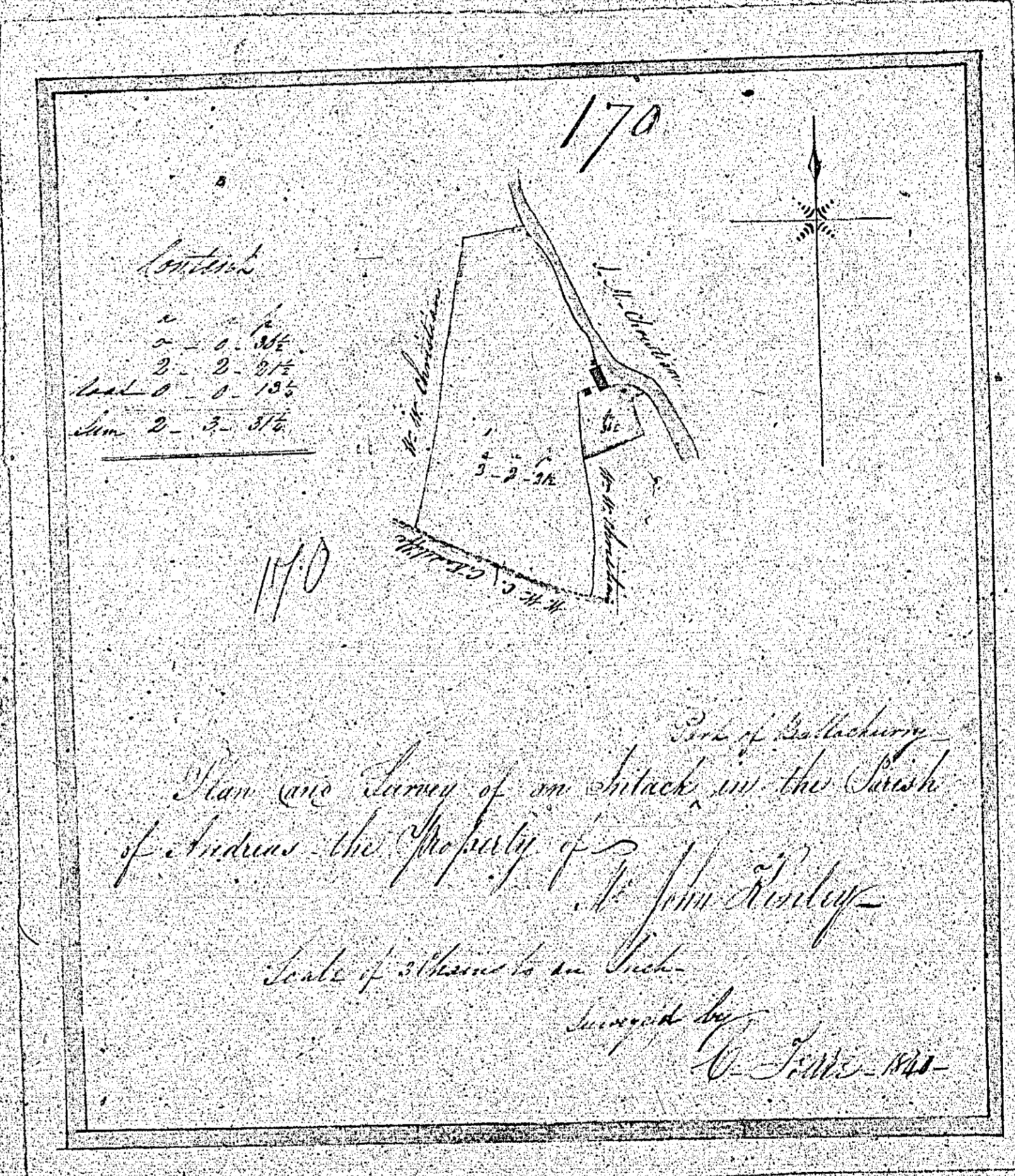
1:30



Not used

170

171



BALLABEG

and part  
of the Duchyland

170

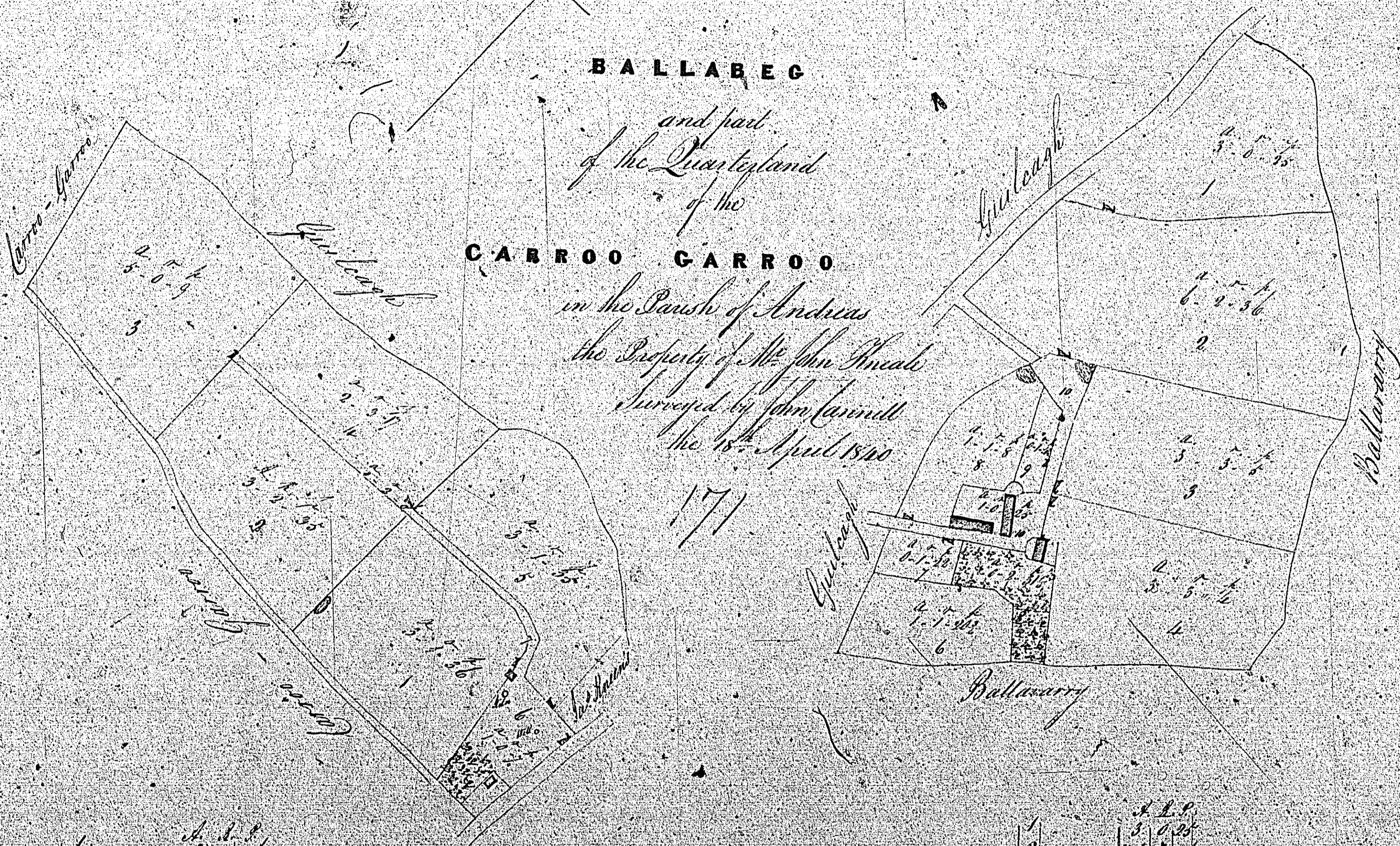
**BALLABEG**

and part  
of the *Quarsteadland*  
of the

**CARRO GARRO**

in the Parish of *Andrews*  
the Property of *Mr. John Kneale*  
Surveyed by *John Carnall*  
the 15<sup>th</sup> April 1850

171



171

*Carro-Garro*

1	4 7 1/2	5 0 9
2	3 2 3/4	3 1 1/2
3	2 0 0	2 3 1/2
4	2 3 1/2	3 1 1/2
5	3 1 1/2	1 1 1/2
6	1 1 1/2	2 0
7	30 0 1/2	1 1/2

*heights*



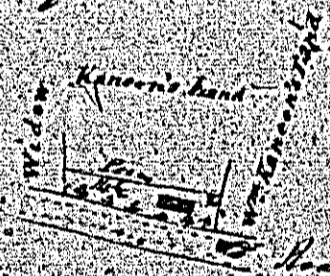
5 chains to the inch

*Ballabeg*

1	4 2 1/2
2	3 0 3/4
3	6 2 3/4
4	3 5 5/8
5	3 3 1/2
6	0 2 3/4
7	1 1 1/2
8	0 1 1/2
9	1 1 1/2
10	0 1 1/2
11	1 1 1/2
12	1 1 1/2
13	1 1 1/2
14	1 1 1/2
15	1 1 1/2
16	1 1 1/2
17	1 1 1/2
18	1 1 1/2
19	1 1 1/2
20	1 1 1/2
21	1 1 1/2
22	1 1 1/2
23	1 1 1/2
24	1 1 1/2
25	1 1 1/2
26	1 1 1/2
27	1 1 1/2
28	1 1 1/2
29	1 1 1/2
30	1 1 1/2
31	1 1 1/2
32	1 1 1/2
33	1 1 1/2
34	1 1 1/2
35	1 1 1/2
36	1 1 1/2
37	1 1 1/2
38	1 1 1/2
39	1 1 1/2
40	1 1 1/2
41	1 1 1/2
42	1 1 1/2
43	1 1 1/2
44	1 1 1/2
45	1 1 1/2
46	1 1 1/2
47	1 1 1/2
48	1 1 1/2
49	1 1 1/2
50	1 1 1/2



Map and Survey  
of Part of the Quarterland of  
Ballasore in Andros,  
the Property of Mr. Wm. Kinnon



1/2 A. C. 2.  
0. 0. 1/2

1/2 A. C. 2. 1/2  
0. 0. 1/2

1/3



Surveyed by John Cannell Schalmaster  
At Andros 1840