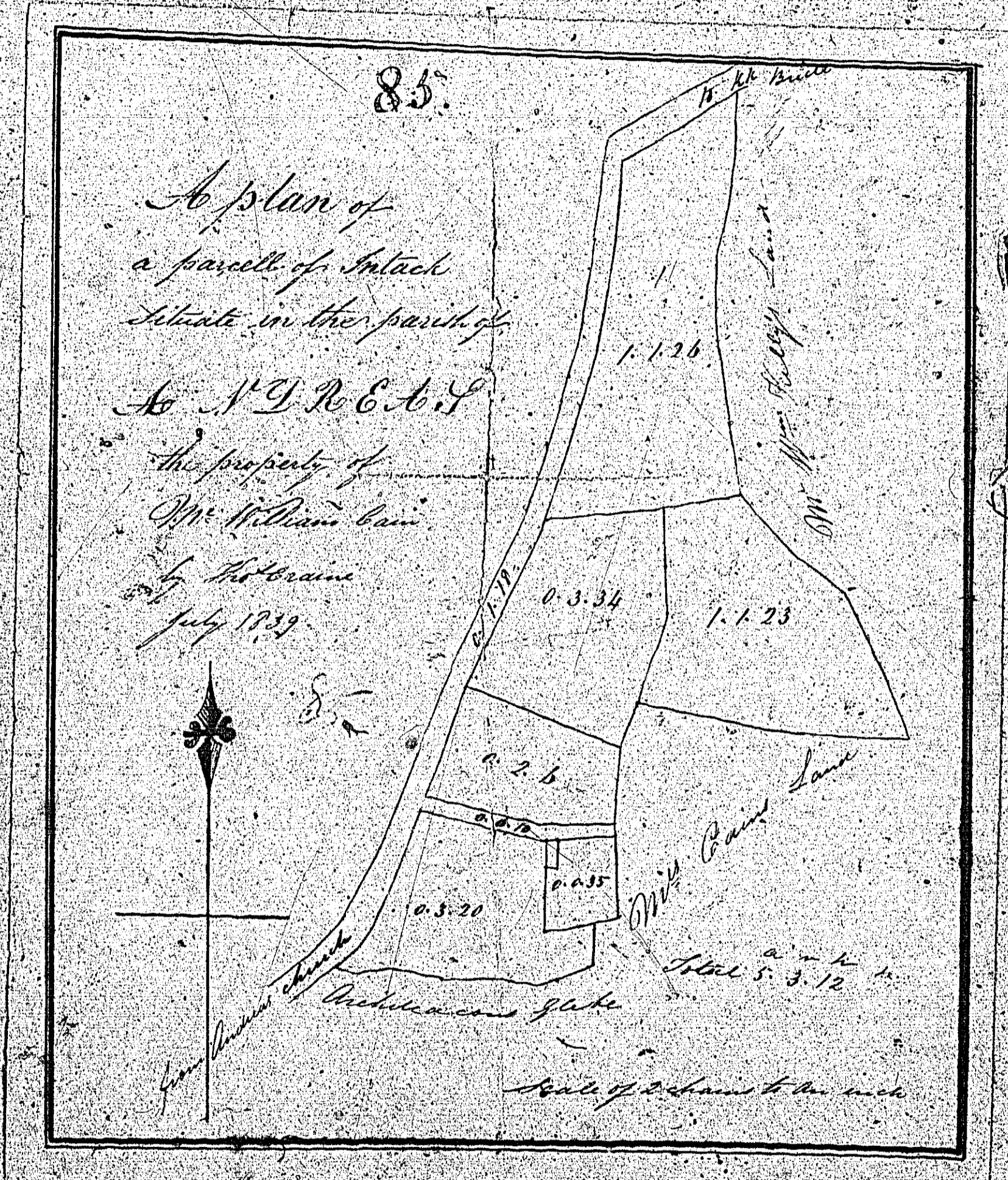


Wm. & Wm.

MAP
Survey of
MILL-CROSS
LBN-CROFT
parish of Andover
in the County
of Wiltshire



1739

Measure in one inch



Surveyed by
Wm. Linn
1739

MAP
 Survey of
 THE CROSS
 LENS-CROFT
 parish of Andreas
 and the Rectory
 of the same

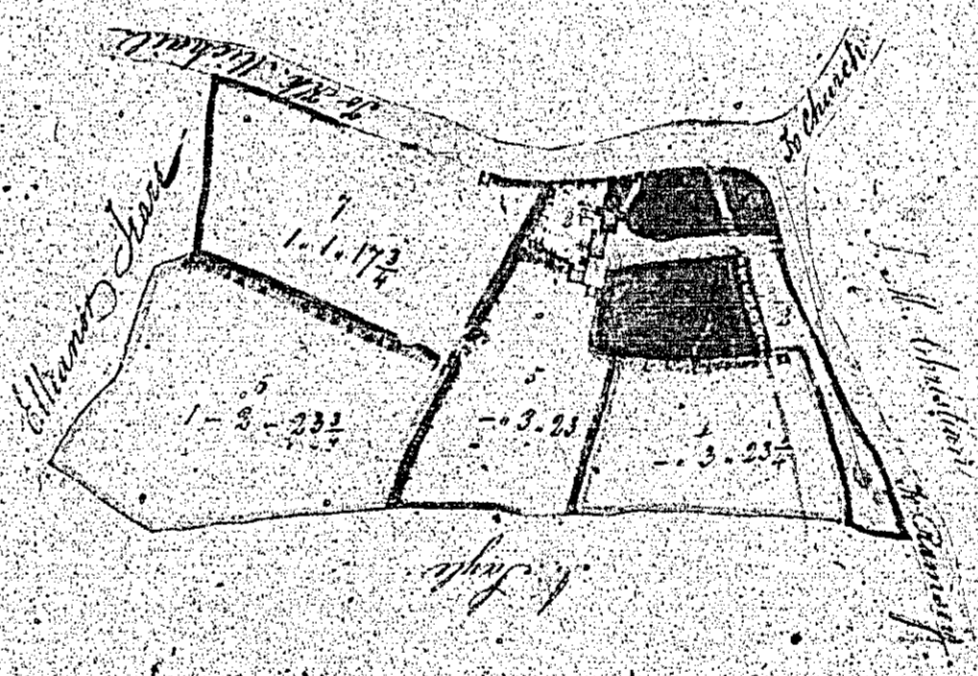
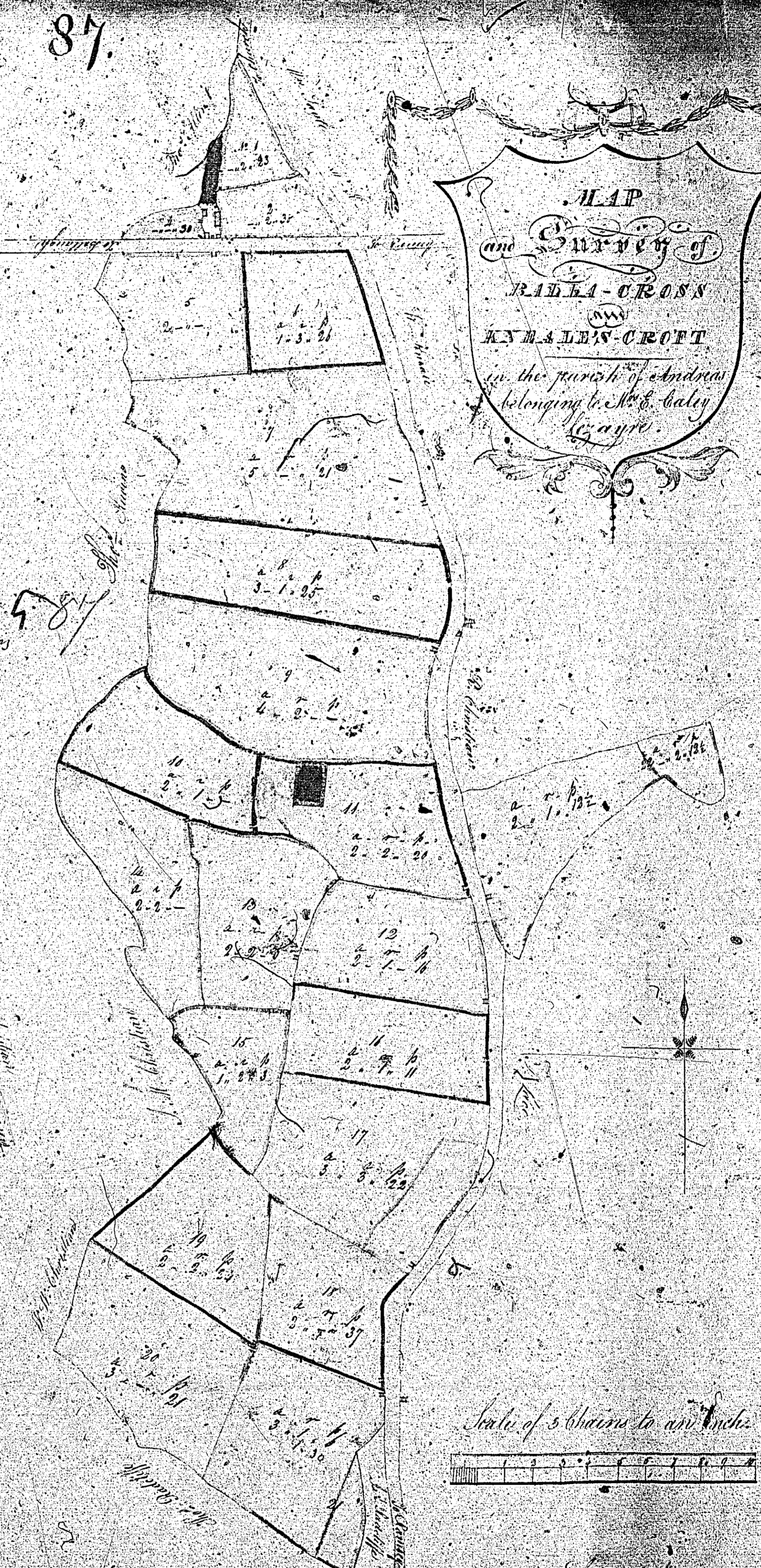
10 perches 86.
 The Rectory
 W. W. Christian
 86
 Plan of a House and
 Garden, and Outch in
 the parish of Andreas
 the Property of
 Mr. Wm. Christian
 Scale of 1/4 inch to one inch
 Wm. Christian
 1820

Shown to one inch
 Surveyed by
 Wm. Christian
 1820

Contents of Ballacross.

1	1 1 1
2	1 1 1
3	1 1 1
4	1 1 1
5	1 1 1
6	1 1 1
7	1 1 1
8	1 1 1
9	1 1 1
10	1 1 1
11	1 1 1
12	1 1 1
13	1 1 1
14	1 1 1
15	1 1 1
16	1 1 1
17	1 1 1
18	1 1 1
19	1 1 1
20	1 1 1
21	1 1 1
22	1 1 1
<i>The road East and West</i>	
<i>do North & South</i>	
<i>Total Sum</i>	

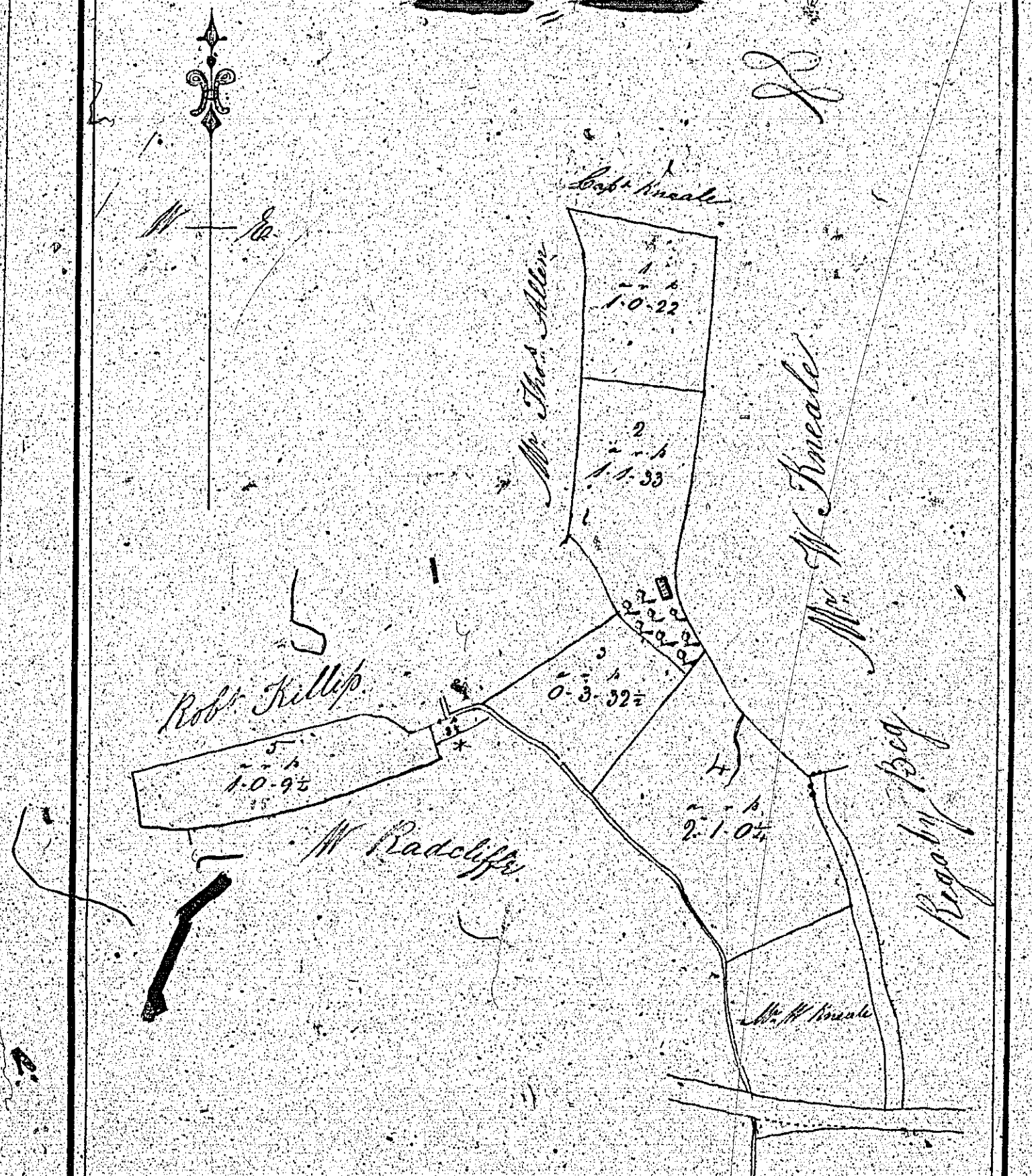
MAP
and Survey of
BALLACROSS
OR
ANNALES-CROFT
 in the parish of Andros
 belonging to His Majesty
 the King.



Contents of Annales-Croft

1	1 1 1
2	1 1 1
3	1 1 1
4	1 1 1
5	1 1 1
6	1 1 1
7	1 1 1
8	1 1 1
<i>The roads</i>	
<i>Total Sum</i>	

Plan of a Parcel of Land
in the Parish of Andriens
the Property of
Mrs Corlett SS.



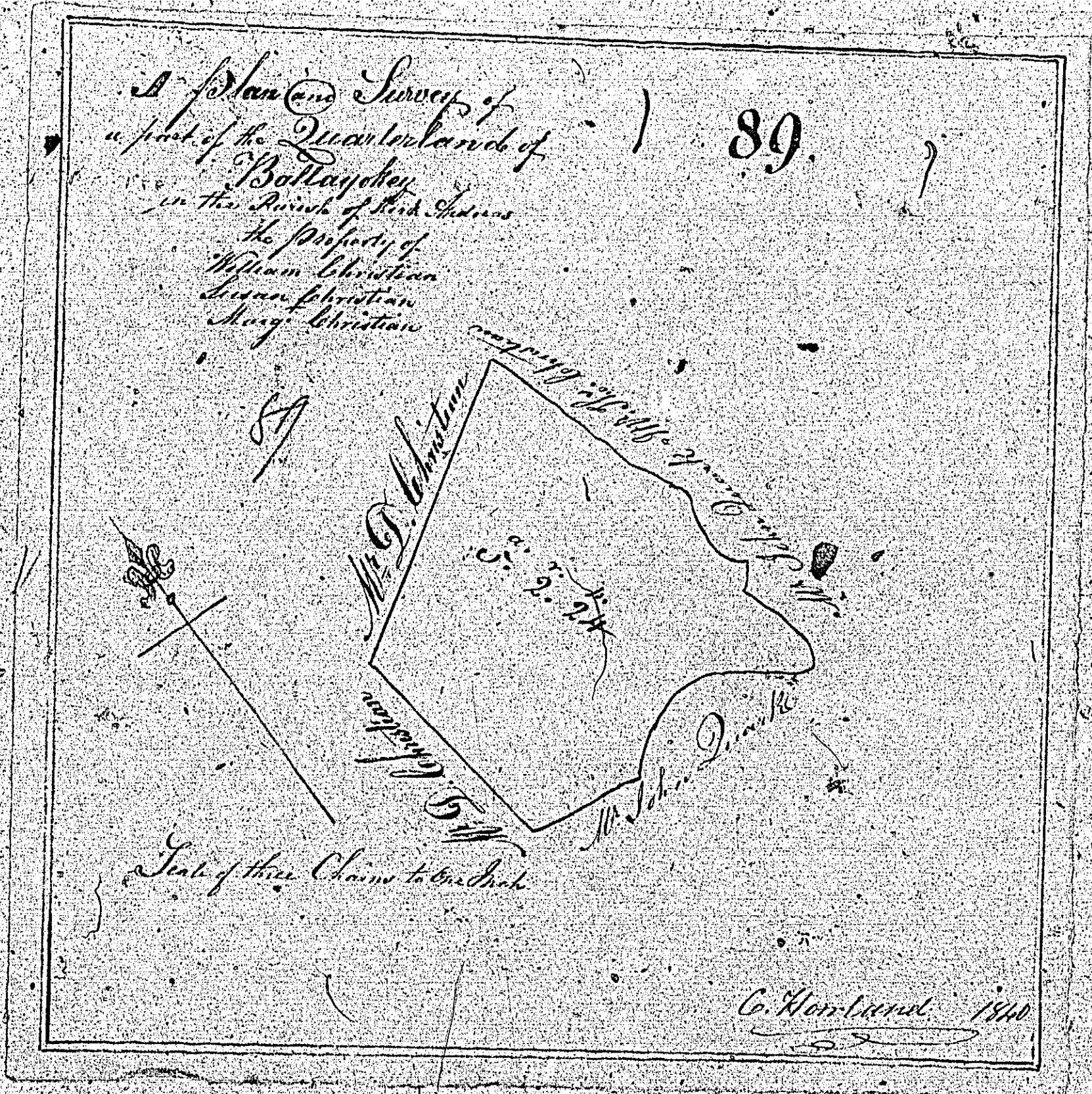
Contents

No	a	r	p
1	1	0	22
2	1	1	33
3	0	3	32
4	2	1	0
5	1	0	9
*	0	0	8
6	3	3	2

Total

Scale of 3 chains
to one Inch

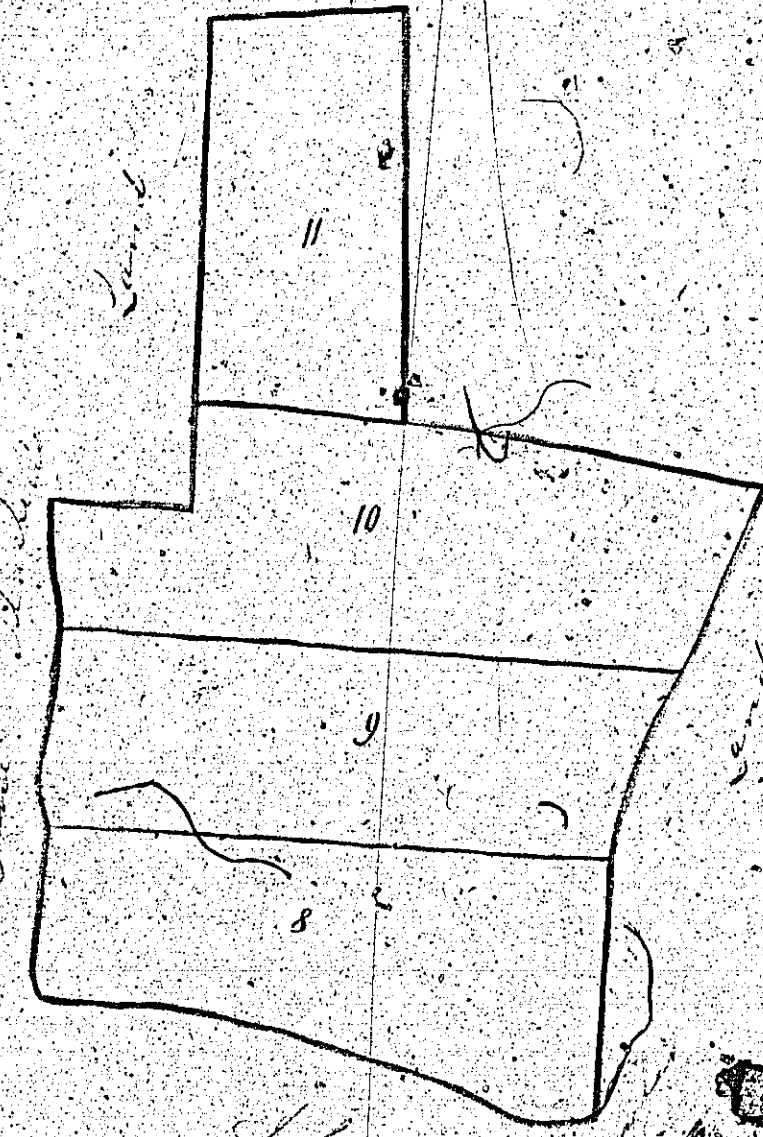
J. Bowdler Surveyor
1740



MAP

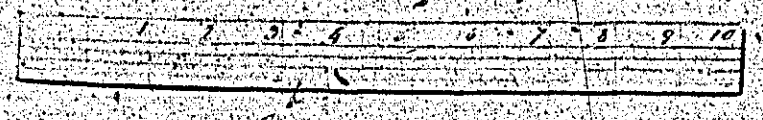
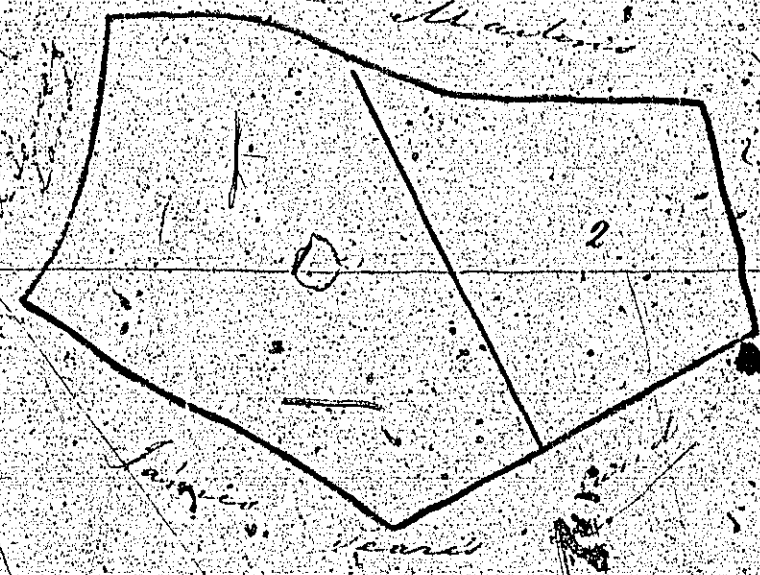
*of Parcels of Land
in the Parish of St. Andrew
the Property of Wm. Comode
Surveyed by Wm. Mackin
May 1839.*

90



Contents

No.	Contents	A R P
1	Part of the Commencement	3. 2. 10
2	Part of the Commencement	2. 0. 10
3	Part of the Commencement	1. 30
4	Part of the Commencement	2. 5
5	Part of the Commencement	3. 1. 15
6	Part of the Commencement	2. 1. 36
7	Part of the Commencement	3. 10
8	Part of the Commencement	2. 3. 24
9	Part of the Commencement	2. 3. 5
10	Part of the Commencement	3. 0. 35
11	Part of the Commencement	3. 3. 24
	Total	26. 0. 33



John Mackin