

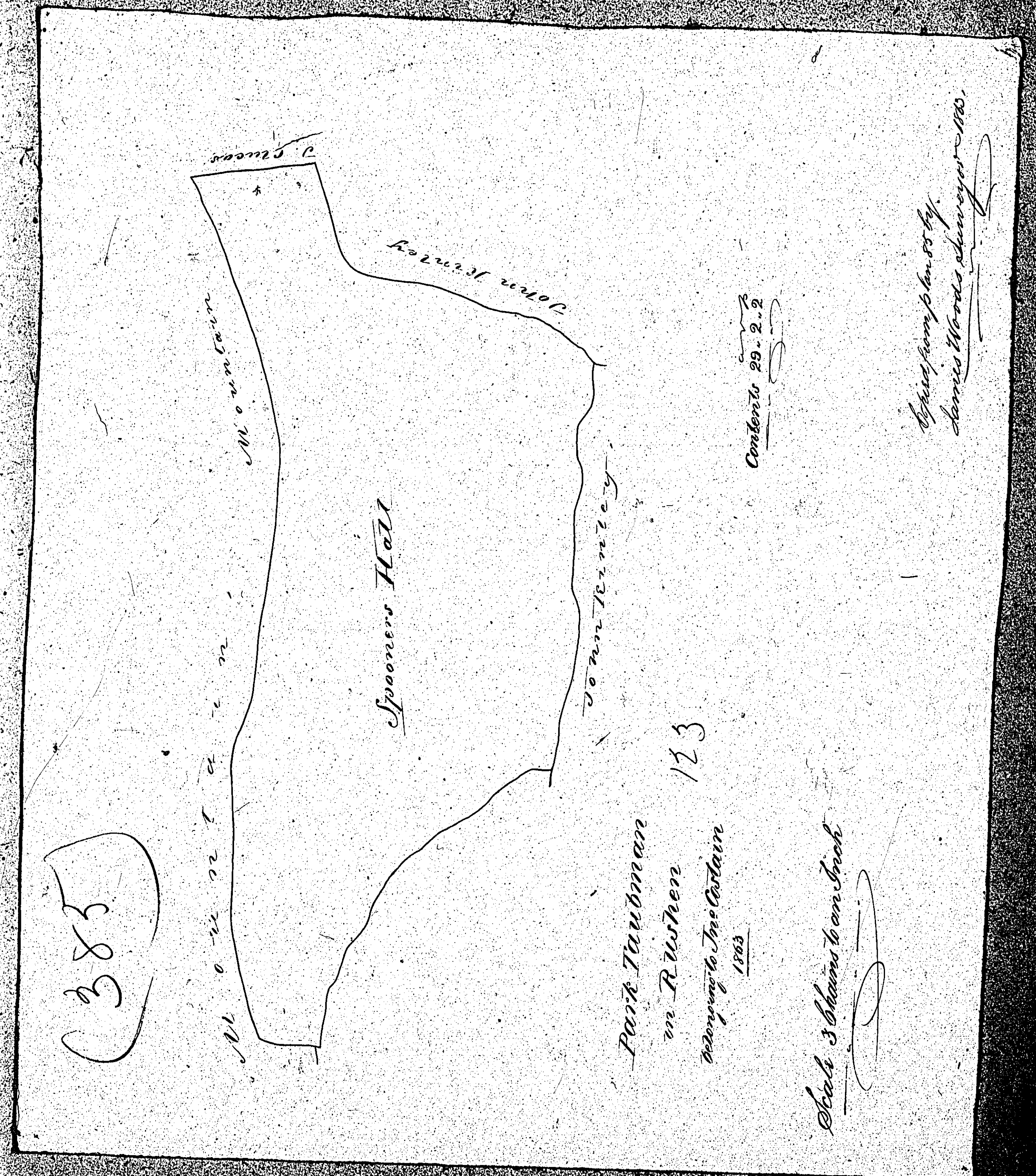
ISLE OF MAN GOVERNMENT: GENERAL REGISTRY

ASYLUM PLANS: PARISH OF RUSHEN

Original monotone

1:23

384

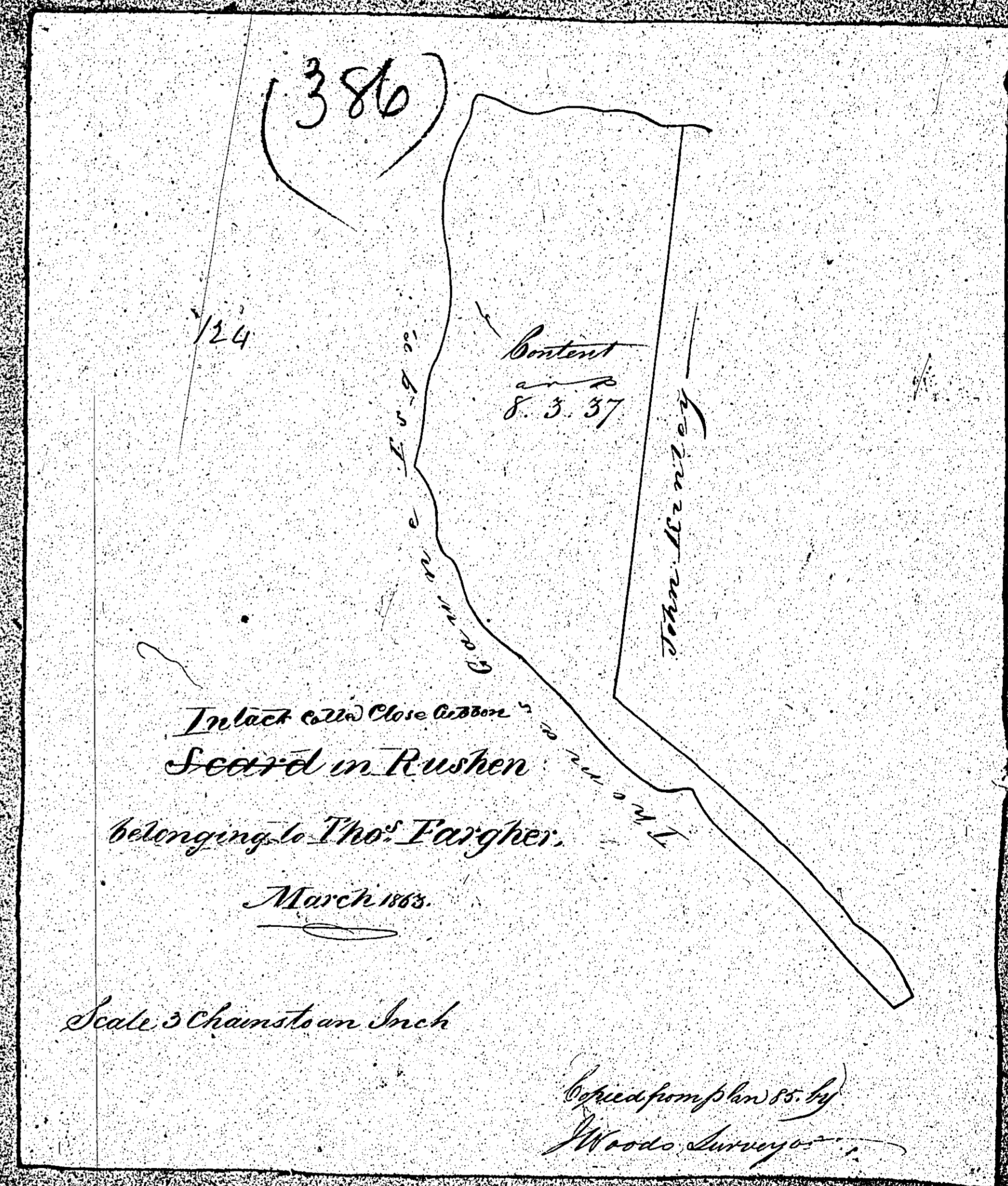


ISLE OF MAN GOVERNMENT: GENERAL REGISTRY

ASYLUM PLANS: PARISH OF RUSHEN

Original monotone

1:23

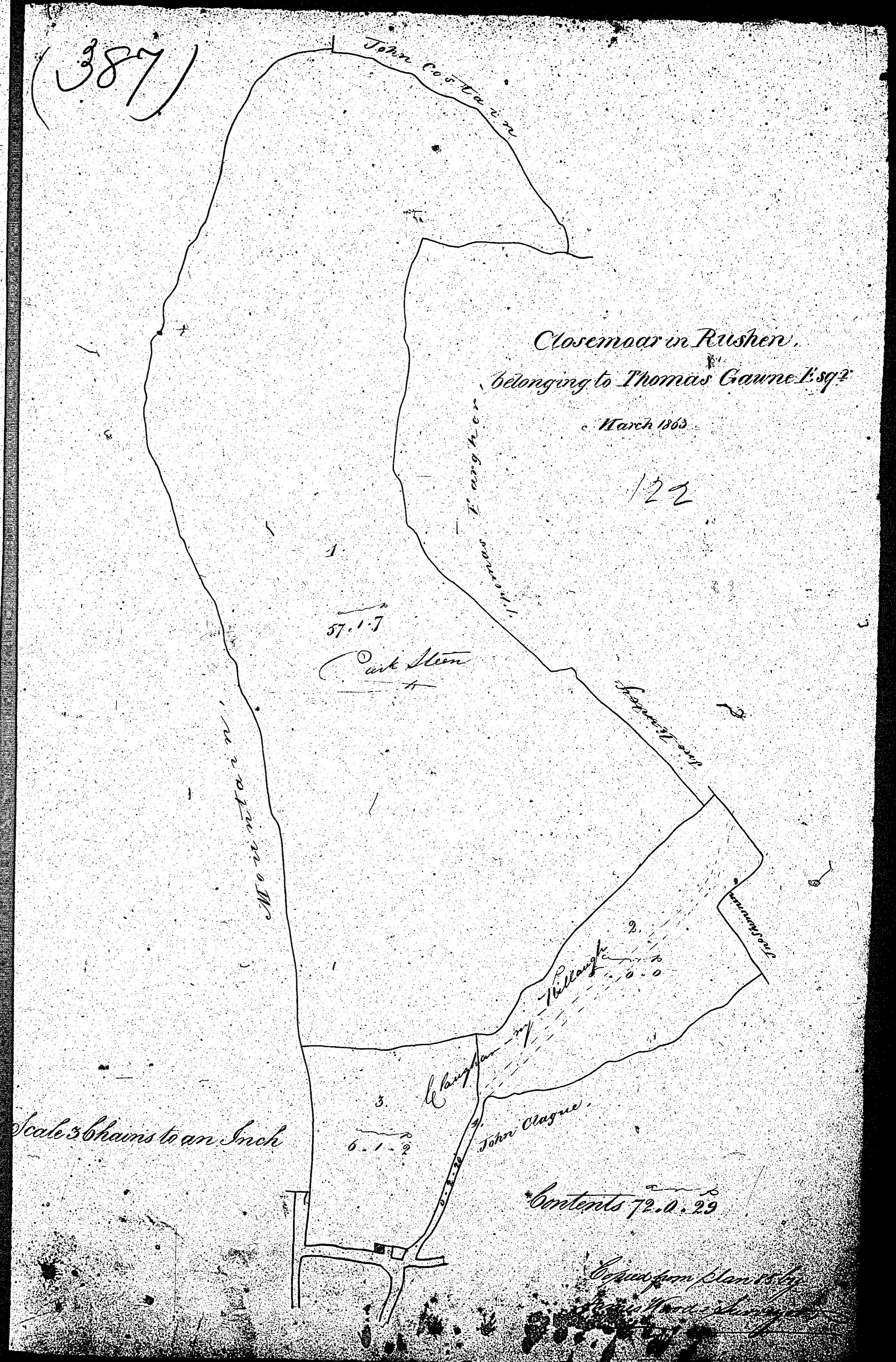


ISLE OF MAN GOVERNMENT: GENERAL REGISTRY

ASYLUM PLANS: PARISH OF RUSHEN

Original monotone

1:23

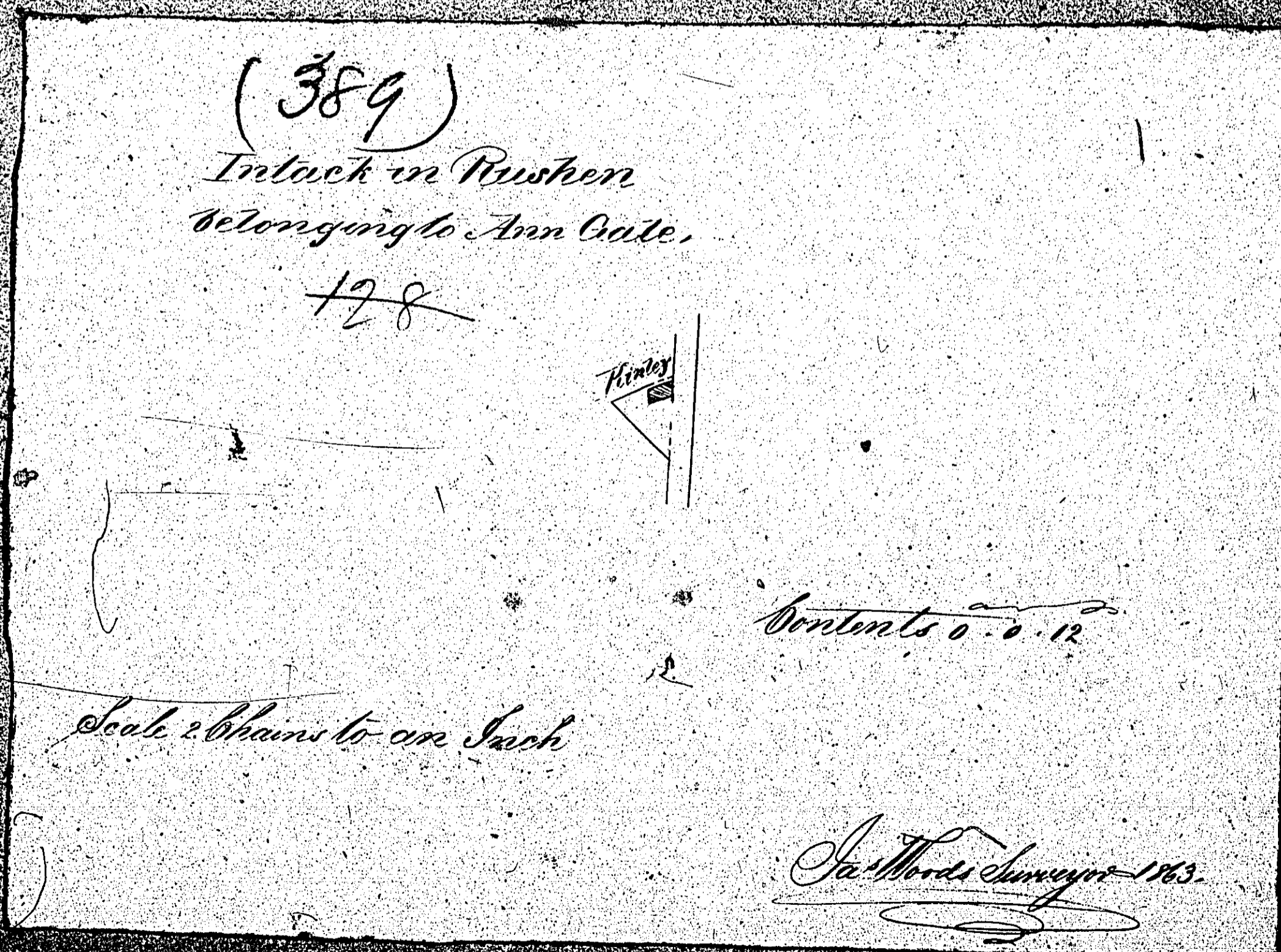
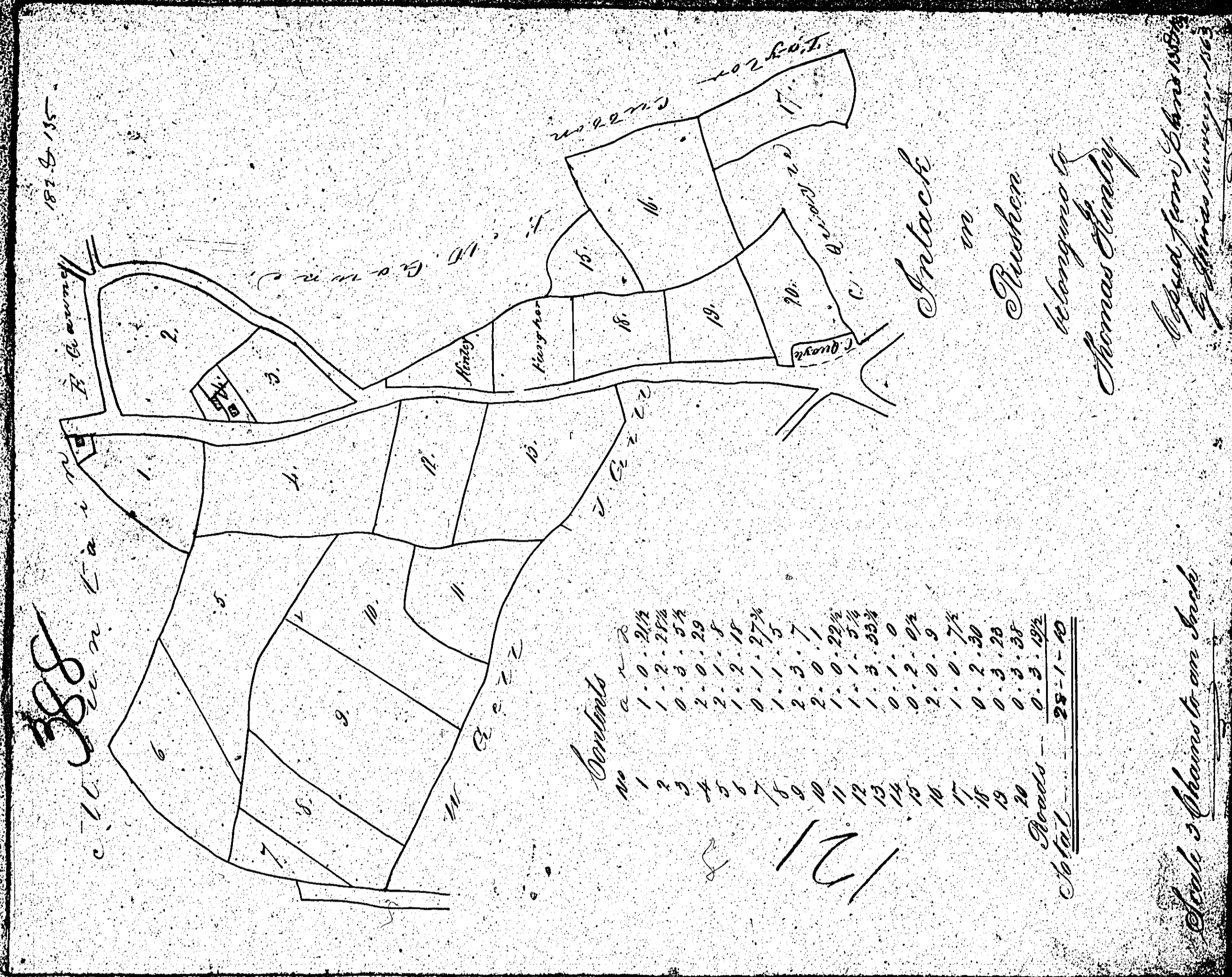


ISLE OF MAN GOVERNMENT: GENERAL REGISTRY

ASYLUM PLANS: PARISH OF RUSHEN

Originals monotone

1:23



ISLE OF MAN GOVERNMENT: GENERAL REGISTRY

ASYLUM PLANS: PARISH OF RUSHEN

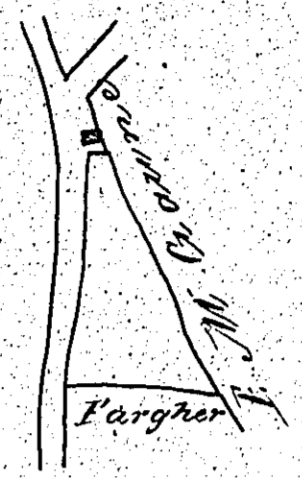
Originals monotone

1:23

(390)

Intack in Rushen  
Belonging to W<sup>r</sup>. Hirstley

127



Contents as follows

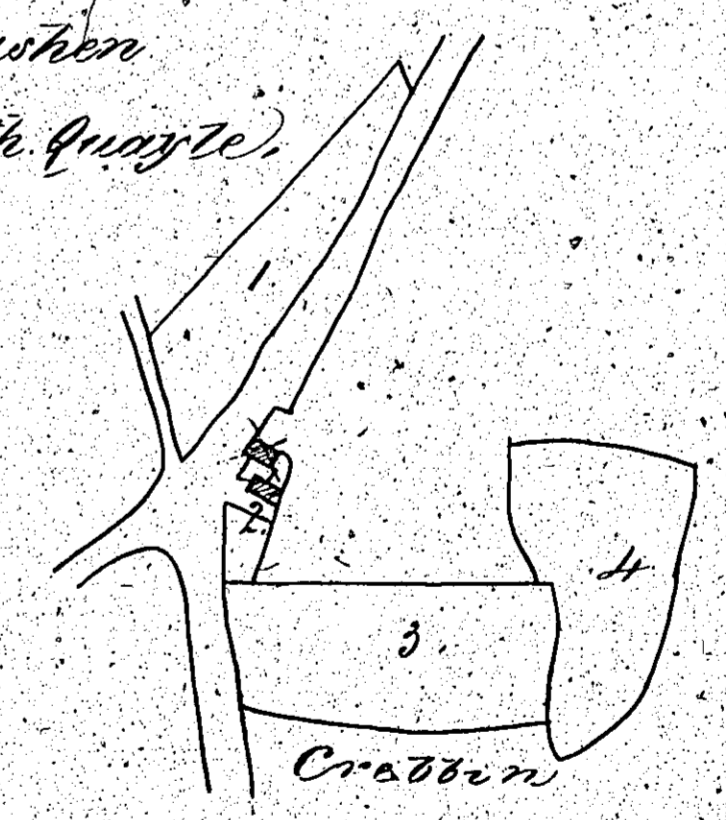
Scale 3 chains to an Inch

Copied from Plan 135 by  
James Woodhouse in 1863

(391)

Intack in Rushen  
Belonging to Col. Quayle

126



Contents

No	Area
1	0.2.34
2	0.0.28
3	1.0.46
4	0.3.22
<hr/>	
Total	2.3.15

Scale 3 chains to an Inch

Copied from Plan 82  
by Woodhouse in 1863

ISLE OF MAN GOVERNMENT: GENERAL REGISTRY

ASYLUM PLANS: PARISH OF RUSHEN

Originals monotone

1:23

(392)

Inlack in Rushen  
belonging to Jno. Hegg

~~194~~

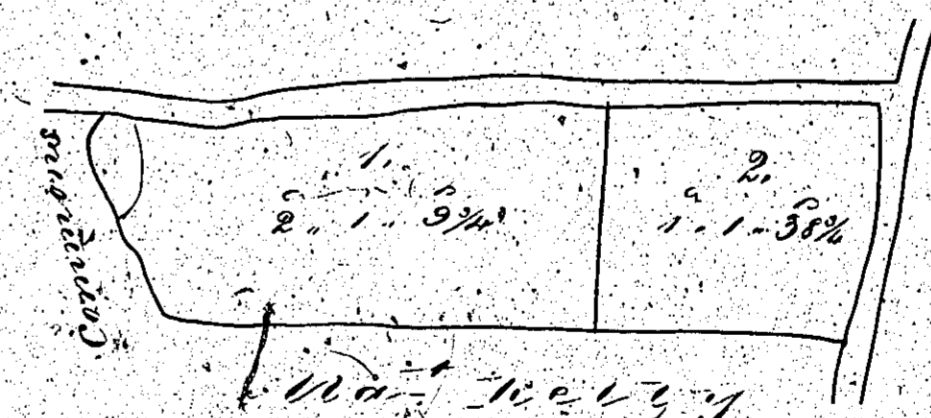


Scale 2 chains to an Inch

Contents 0.0.15

Woods Surveyor 1860

393



Inlack in  
Rushen belonging to  
John Hegg  
1860

Content 3.3.5

Scale 3 chains to an Inch

Copied from Plan 170 by Woods Surveyor