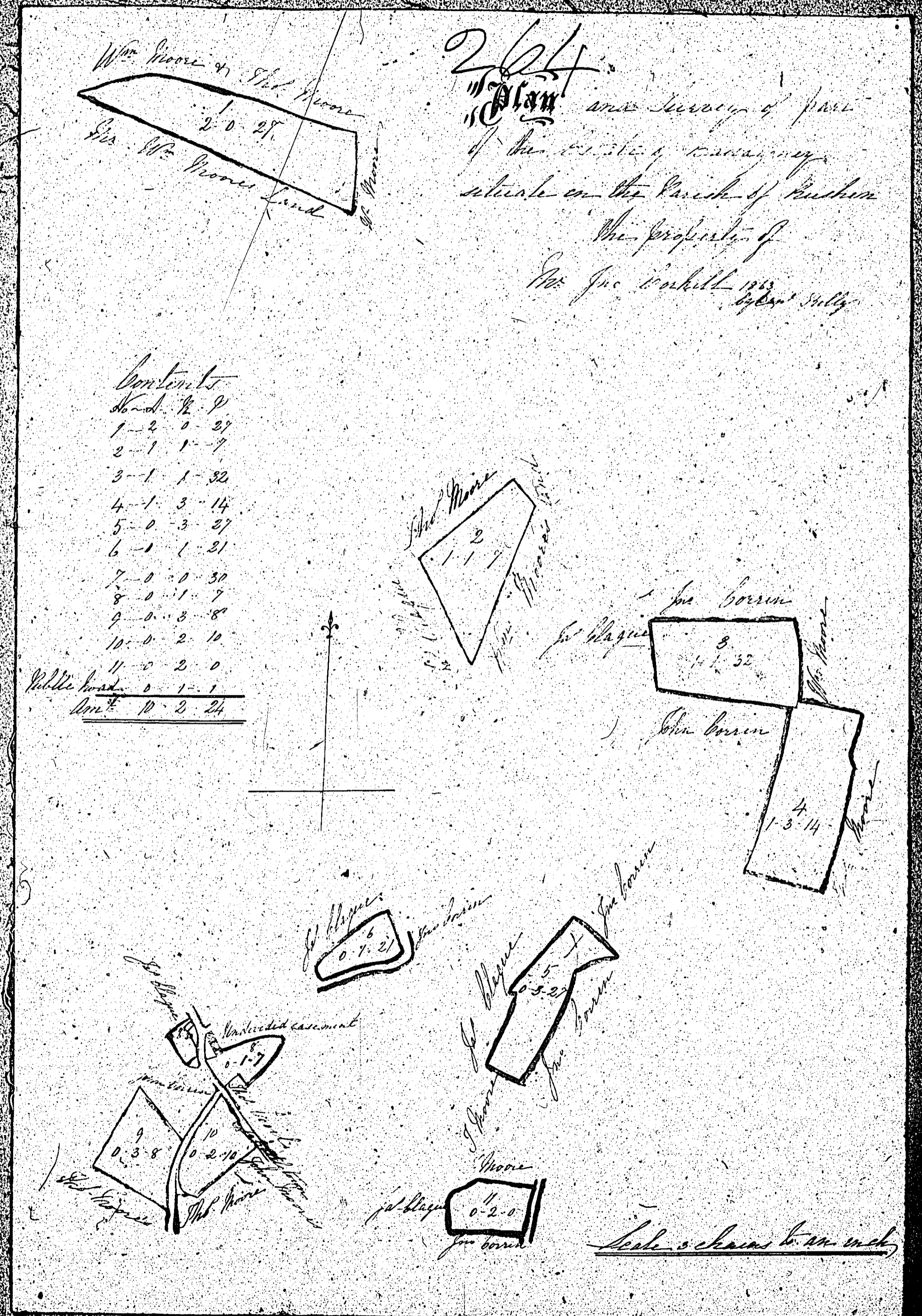


ISLE OF MAN GOVERNMENT: GENERAL REGISTRY

ASYLUM PLANS: PARISH OF RUSHEN

Original coloured (decorative)

1:23

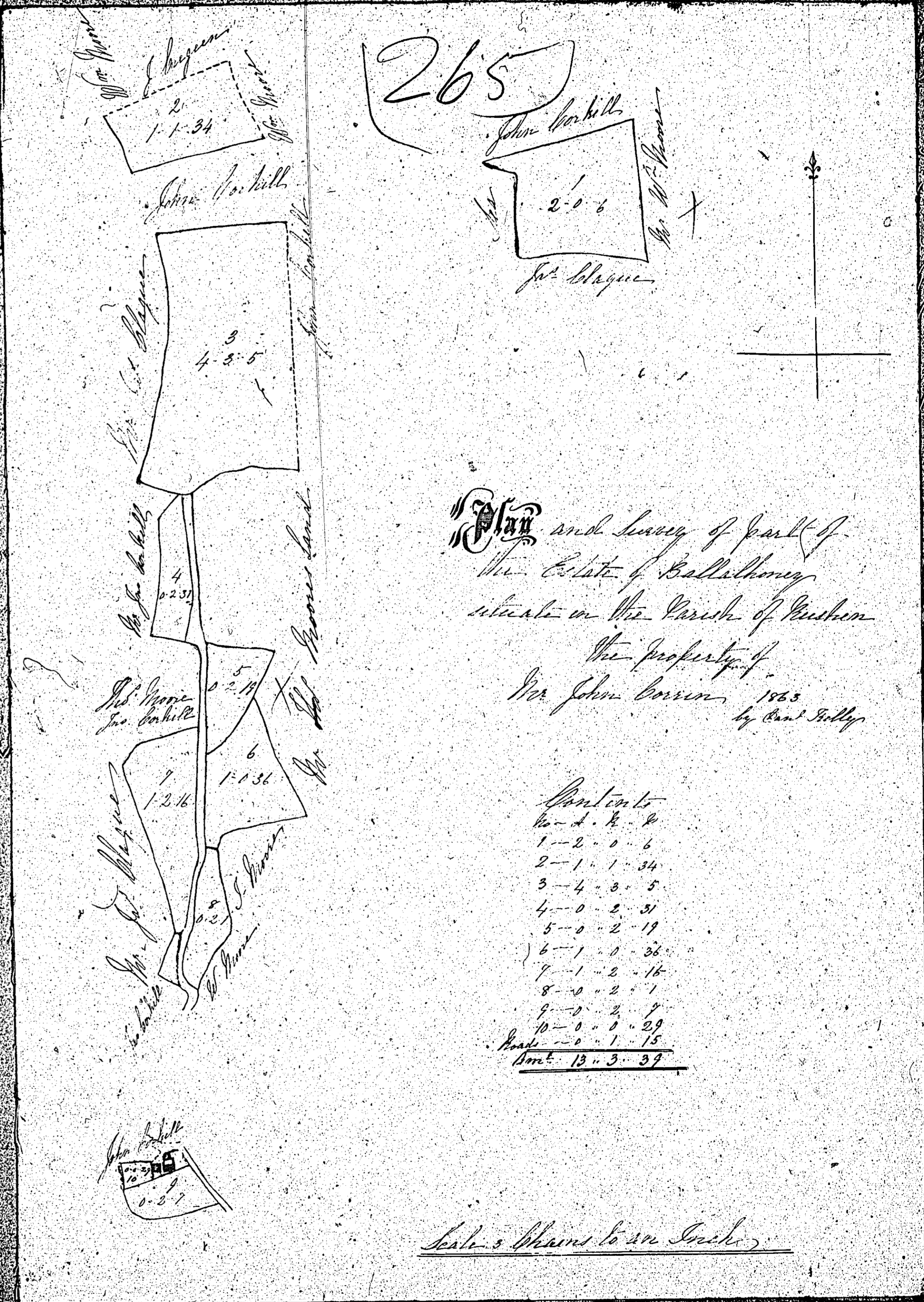


ISLE OF MAN GOVERNMENT: GENERAL REGISTRY

ASYLUM PLANS: PARISH OF RUSHEN

Original coloured (decorative)

1:23

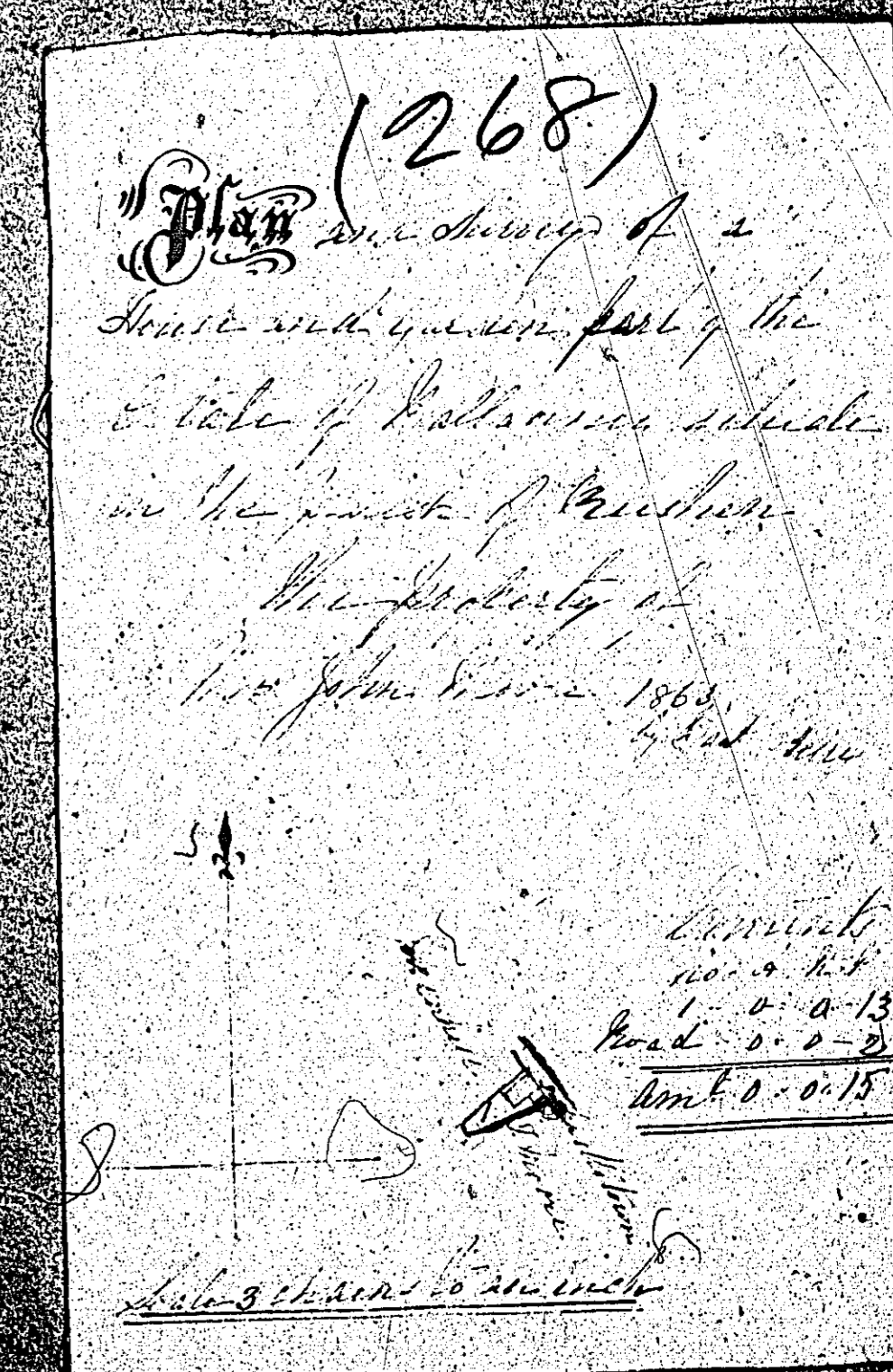
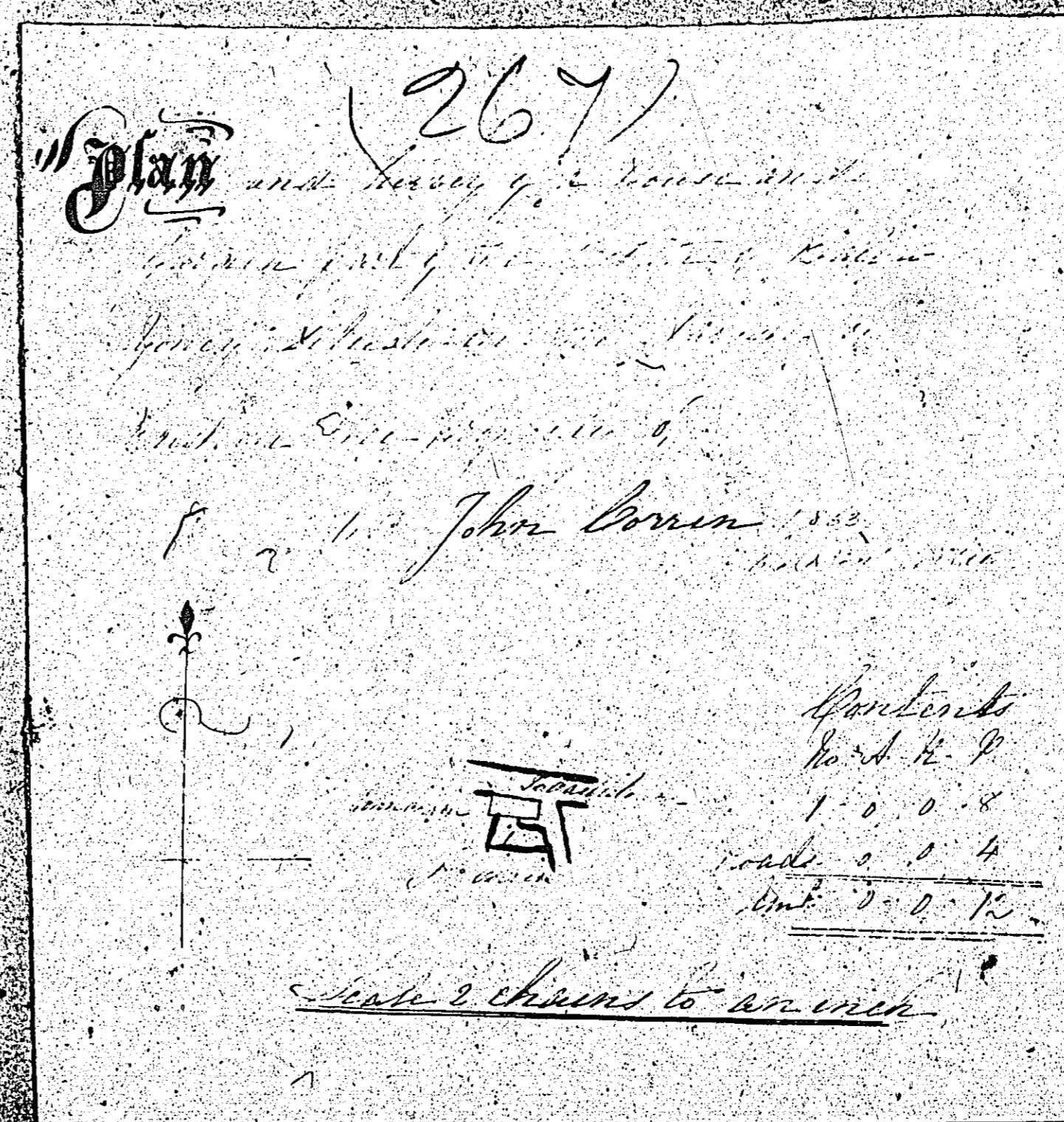
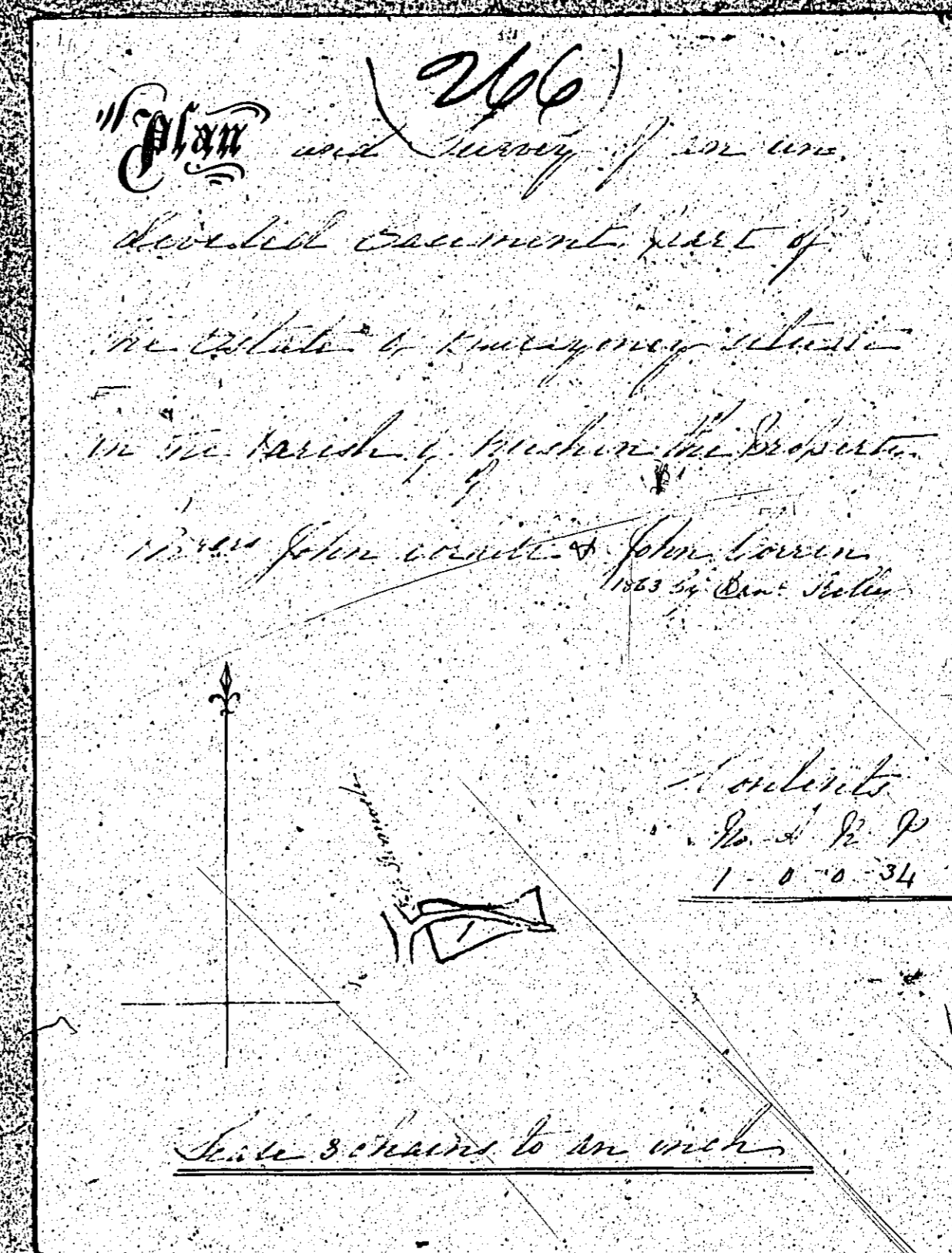


ISLE OF MAN GOVERNMENT: GENERAL REGISTRY

ASYLUM PLANS: PARISH OF RUSHEN

Originals coloured (decorative)

1:23

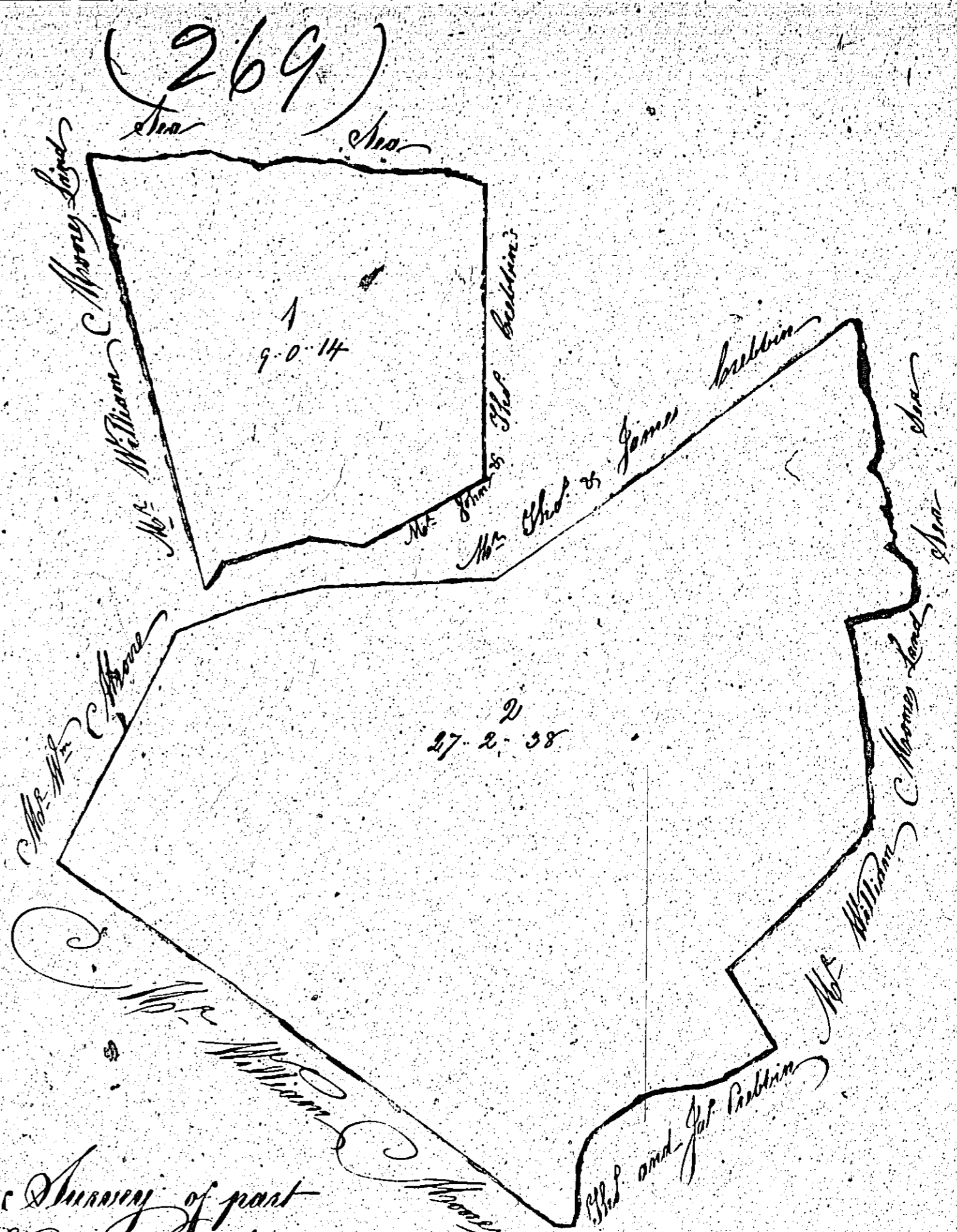


ISLE OF MAN GOVERNMENT: GENERAL REGISTRY

ASYLUM PLANS: PARISH OF RUSHEN

Original coloured (decorative)

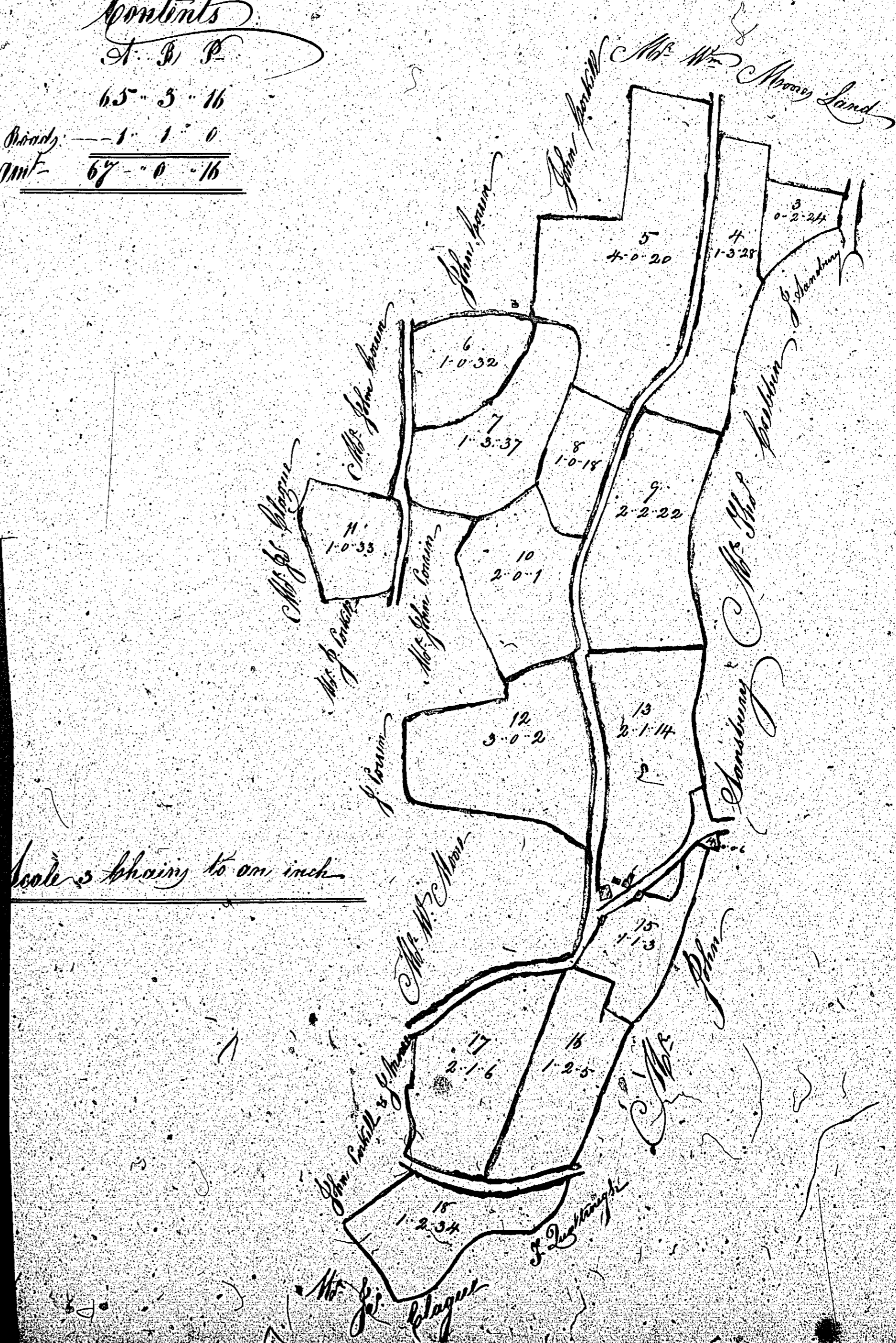
1:23



*Map and Survey of part
of the estate of Ballahoney situate in
the Parish of Rushen the Property of
Mrs Thomas Moore
of 1865 by Daniel Kelly*

Contents

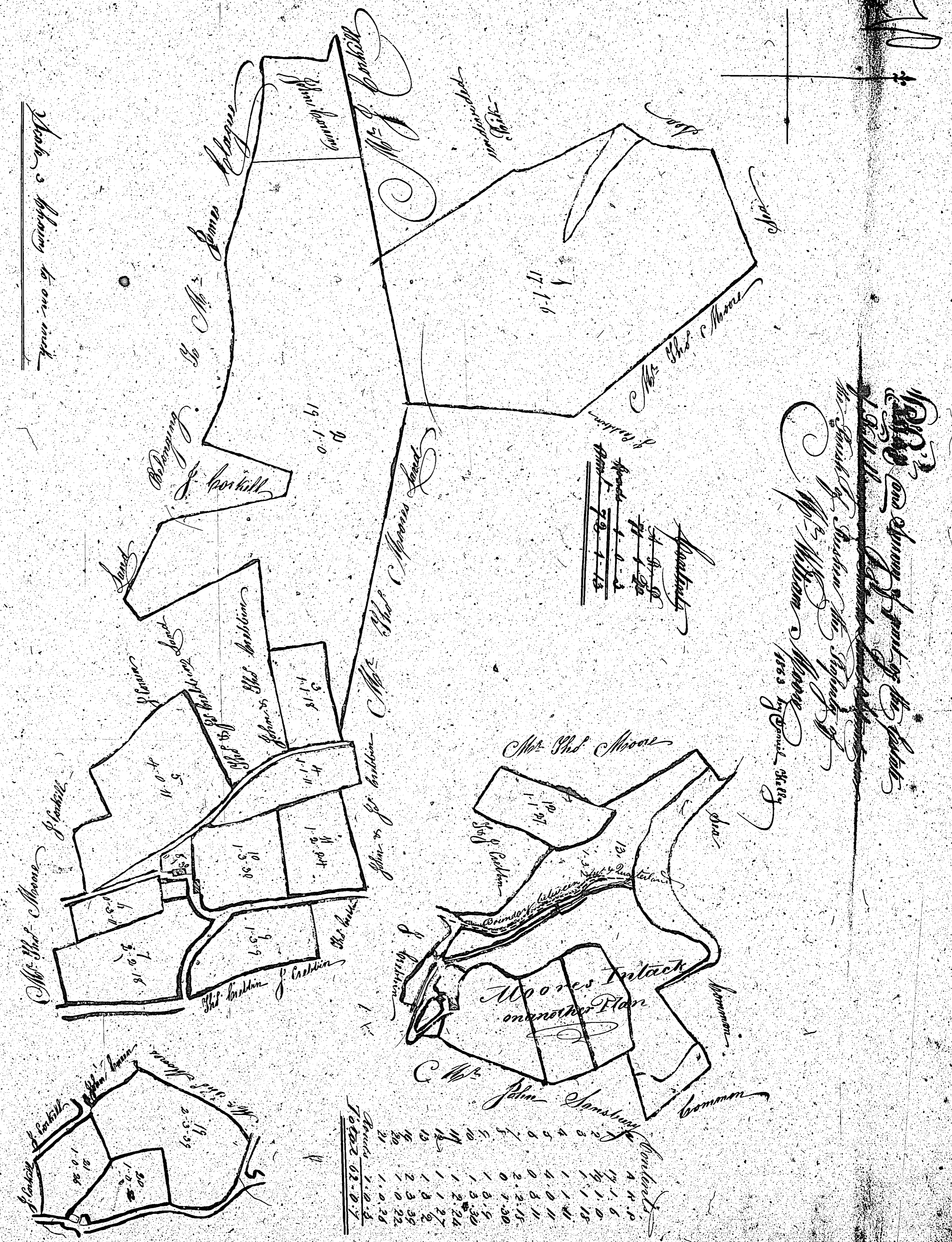
A. B. P.	65-5-16
Bonds	-1-1-0
MT	67-0-16



Scale is shown to one inch

269

ISLE OF MAN GOVERNMENT: GENERAL REGISTRY
ASYLUM PLANS: PARISH OF RUSHEN
Original coloured (decorative) 1:23



ISLE OF MAN GOVERNMENT: GENERAL REGISTRY

ASYLUM PLANS: PARISH OF RUSHEN

Originals coloured (decorative)

1:23

