

ISLE OF MAN GOVERNMENT: GENERAL REGISTRY

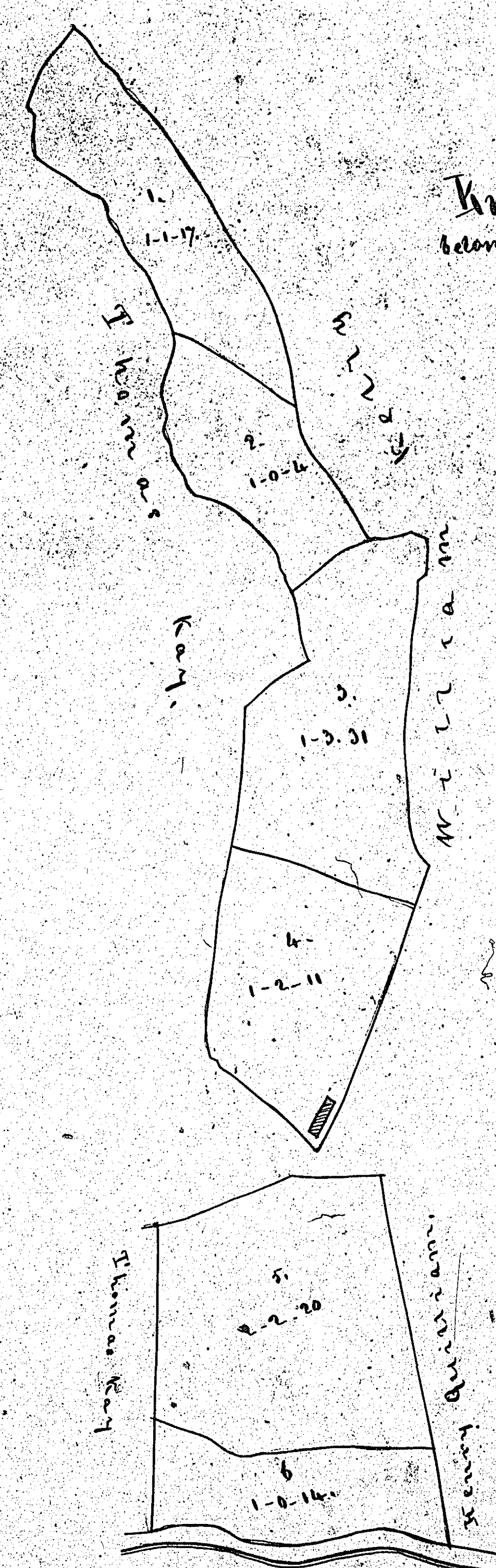
ASYLUM PLANS: PARISH OF PATRICK

Original monotone

1:23

19

19



Knoekmoar in Patrick
belonging to Catharine Kneen.

Content 9.2.17

Scale 3 chains

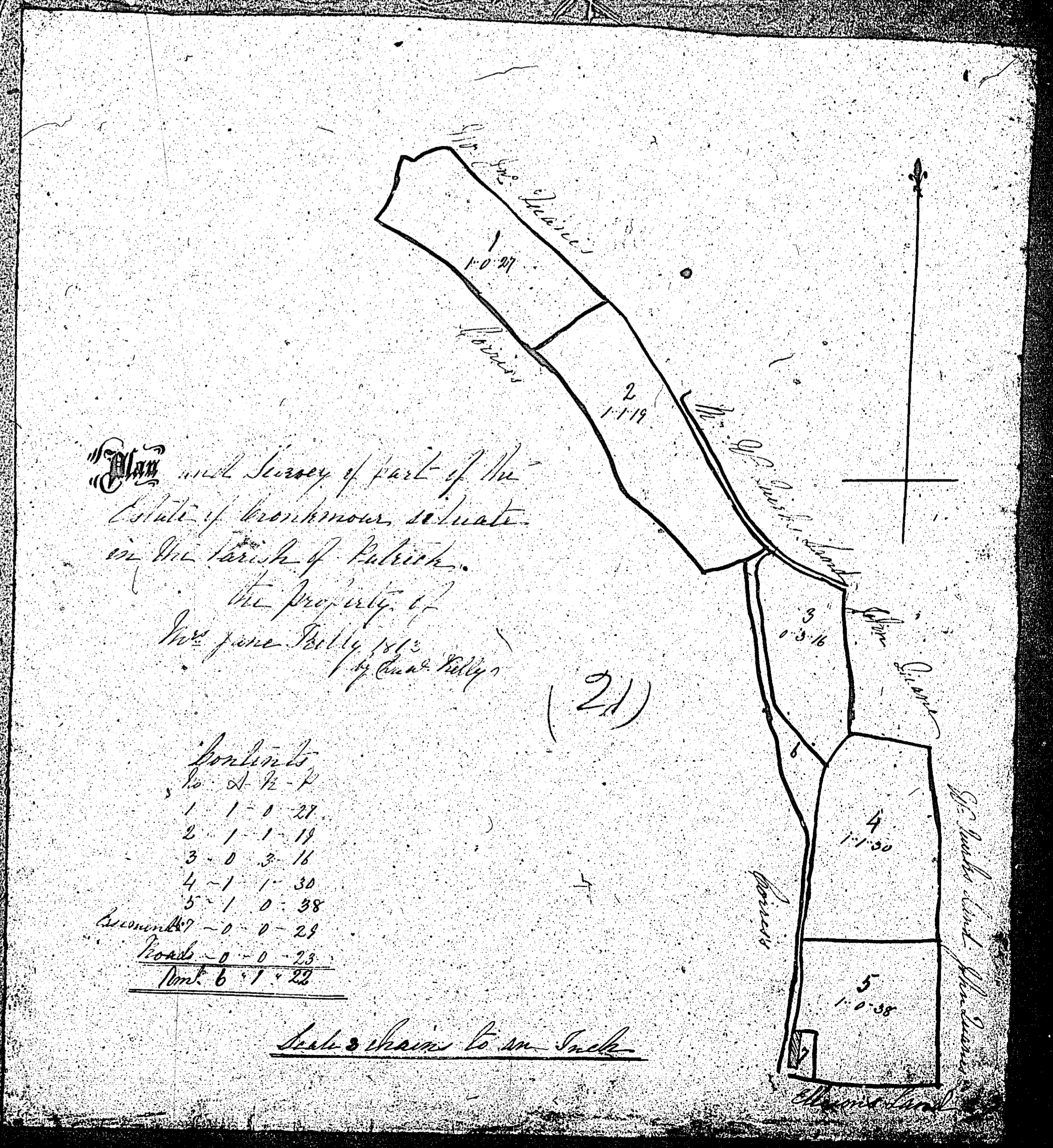
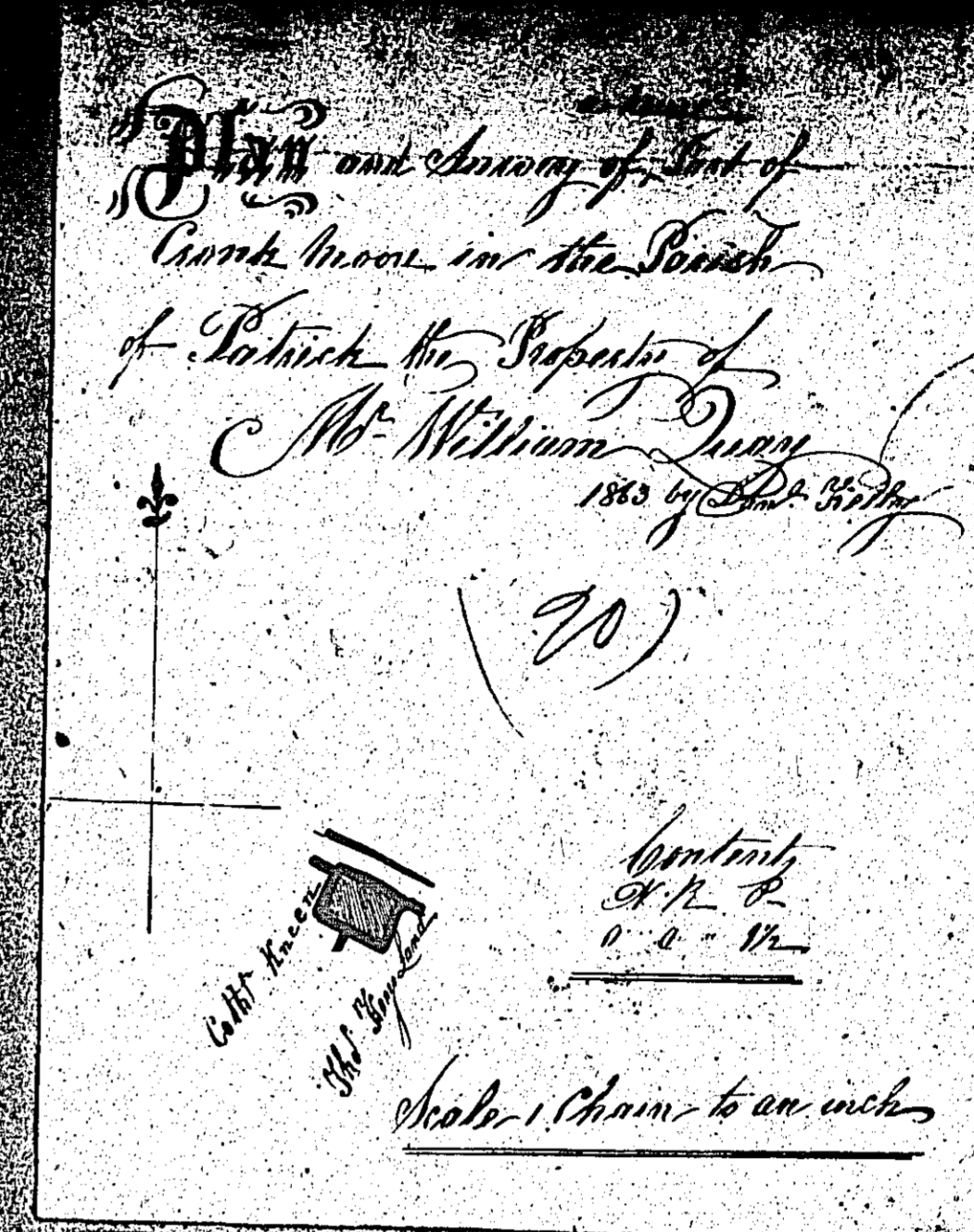
Original plan
1917

ISLE OF MAN GOVERNMENT; GENERAL REGISTRY

ASYLUM PLANS: PARISH OF PATRICK

Originals coloured (decorative)

1:23

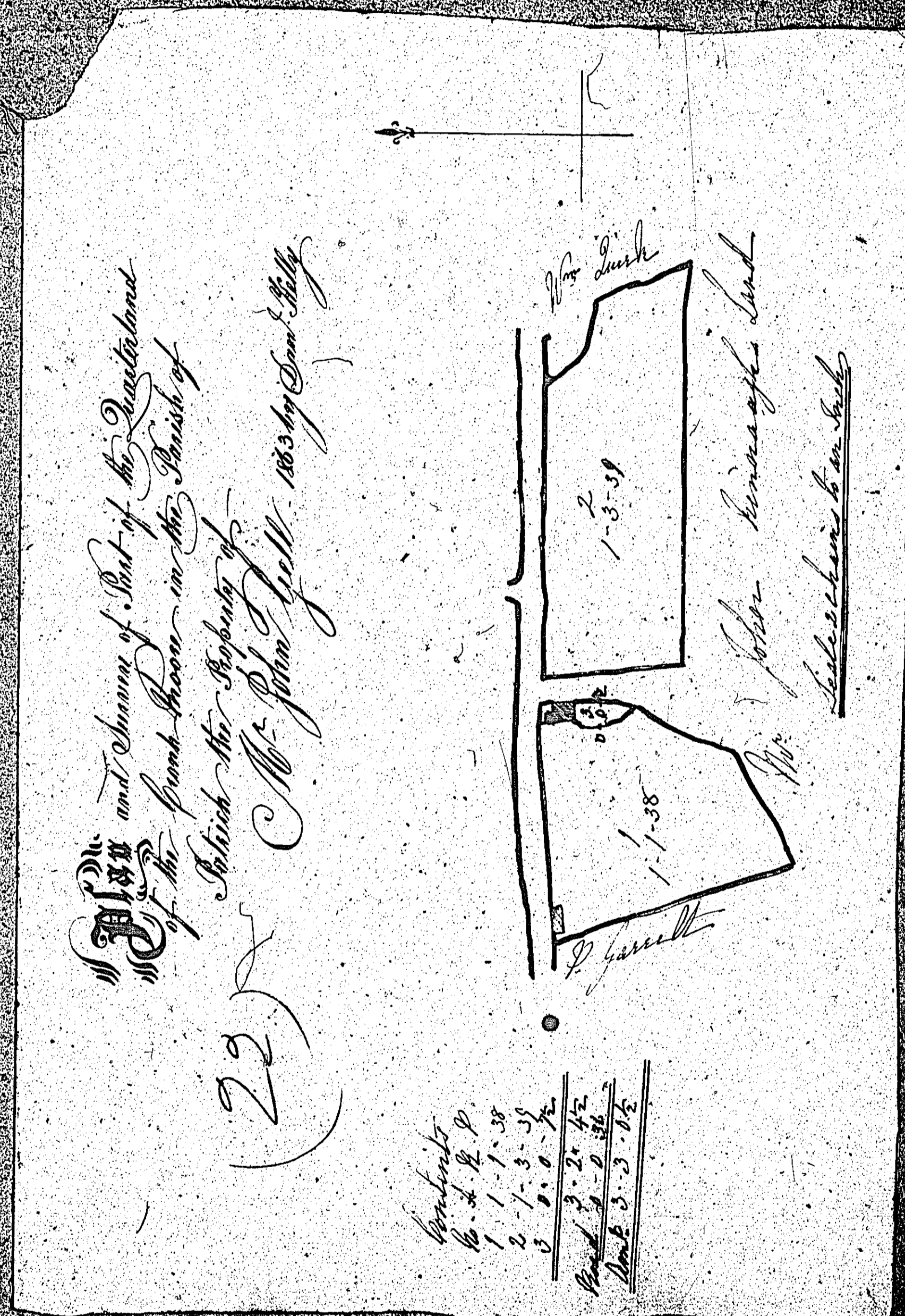


ISLE OF MAN GOVERNMENT: GENERAL REGISTRY

ASYLUM PLANS: PARISH OF PATRICK

Original coloured (decorative)

1:23



ISLE OF MAN GOVERNMENT: GENERAL REGISTRY

ASYLUM PLANS: PARISH OF PATRICK

1:23

- 24 Original coloured (decorative)
- 25 Original monotone

