

(135)

Ballyquayle in Conchan
Belonging to Mrs. S. E. Forrant
Survey 1864.



Contents

1	2.3.1
2	2.3.5
3	0.0.0
4	0.0.0
5	0.0.2
6	5.2.10
7	2.3.18
8	2.0.20
9	2.0.23
10	2.1.22
11	1.1.8
12	1.1.32
13	3.1.7
14	3.1.31
15	3.1.34
16	3.1.17
17	0.1.8
18	6.0.30
19	4.0.24
20	4.3.21
21	5.3.30
22	5.3.29
23	5.1.21
24	5.1.20
25	4.1.29
26	7.3.3
27	0.3.22
28	0.3.20
29	0.1.24
30	0.1.24
Fabric Points 1.3.8	
Total - 108.2.8	

Copied by Ebenezer Woods
From Plan St. John

Scale 3 Chains

ISLE OF MAN GOVERNMENT: GENERAL REGISTRY

ASYLUM PLANS: PARISH OF ONCHAN

Original monotone

1:23

ISLE OF MAN GOVERNMENT: GENERAL REGISTRY

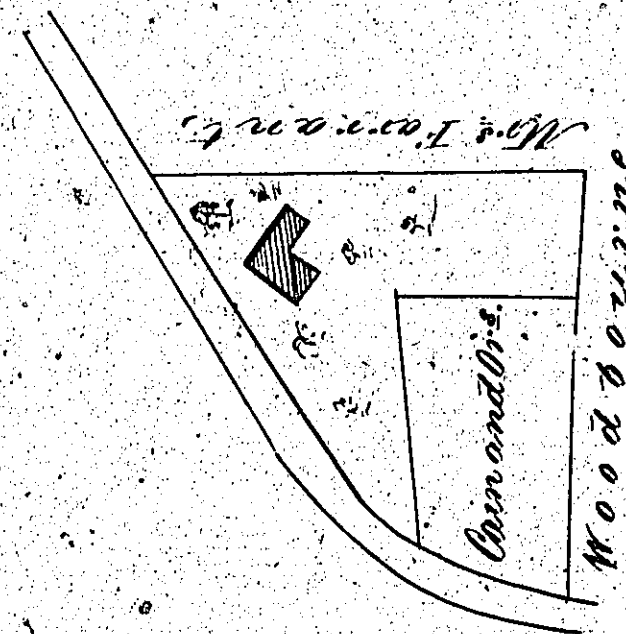
ASYLUM PLANS: PARISH OF ONCHAN

Original monotone

1:23

136

*Ballagayle in Onchan
belonging to Redmy Harrison Esq.*



Content 1.3.12

*Copied from plan 86 by
James Woods*

P. C. & Co.

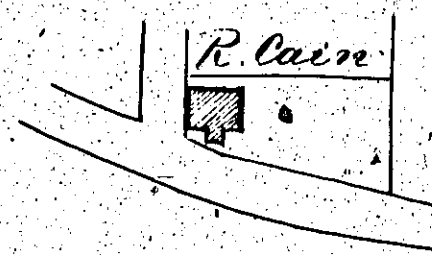
ISLE OF MAN GOVERNMENT: GENERAL REGISTRY
ASYLUM PLANS: PARISH OF ONCHAN

Originals monotone

1:23

137

Ballaquayte in Onchan
belonging to Duncan Leuin

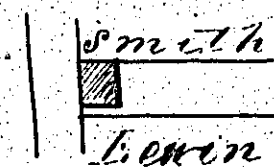


Contents ^{acres} 0-0-34

Scale 2 Chains

138

Ballaquayte in Onchan
belonging to R^t Leuin

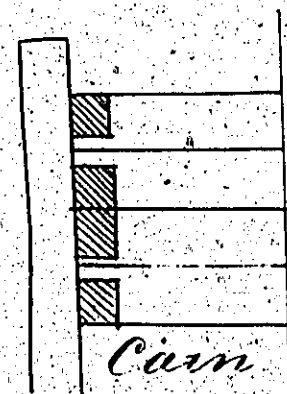


Contents ^{acres} 0-0-20

Scale 2 Chains

139

Ballaquayte in Onchan
belonging to Smith

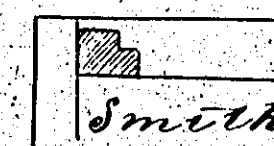


Content ^{acres} 0-2-2

Scale 2 Chains

140

Ballaquayte in Onchan
belonging to Charlotte Ann Smith



Content ^{acres} 0-0-21

Scale 2 Chains

J. Gould
Surveyor 1840

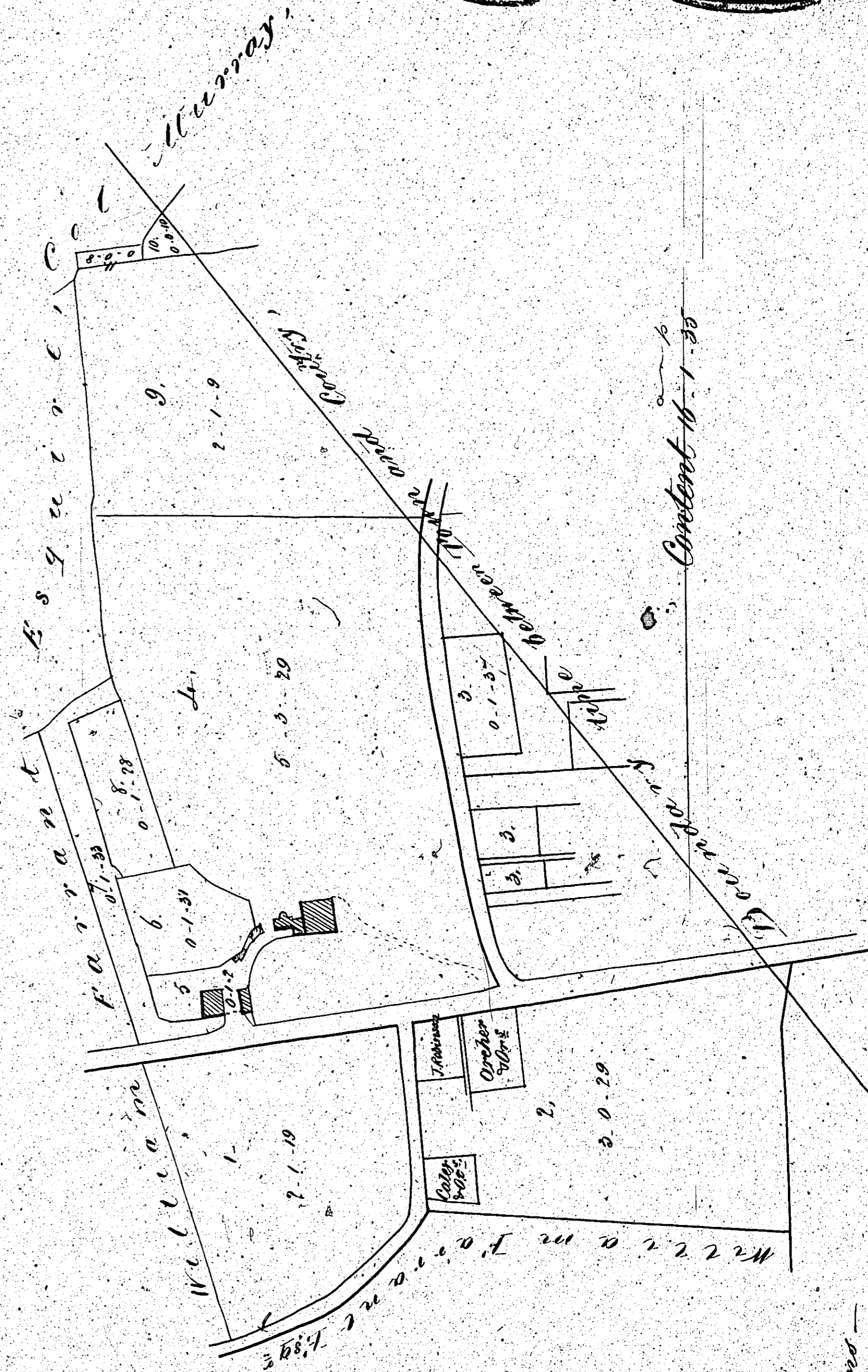
ISLE OF MAN GOVERNMENT: GENERAL REGISTRY

ASYLUM PLANS: PARISH OF ONCHAN

141 Original coloured (decorative)

1:23

*Woodbourne in Onchan,
belonging to Ridgway Harrison Esq*



Scale 1:23

*Original from plan 99 by
James Woods 1862*

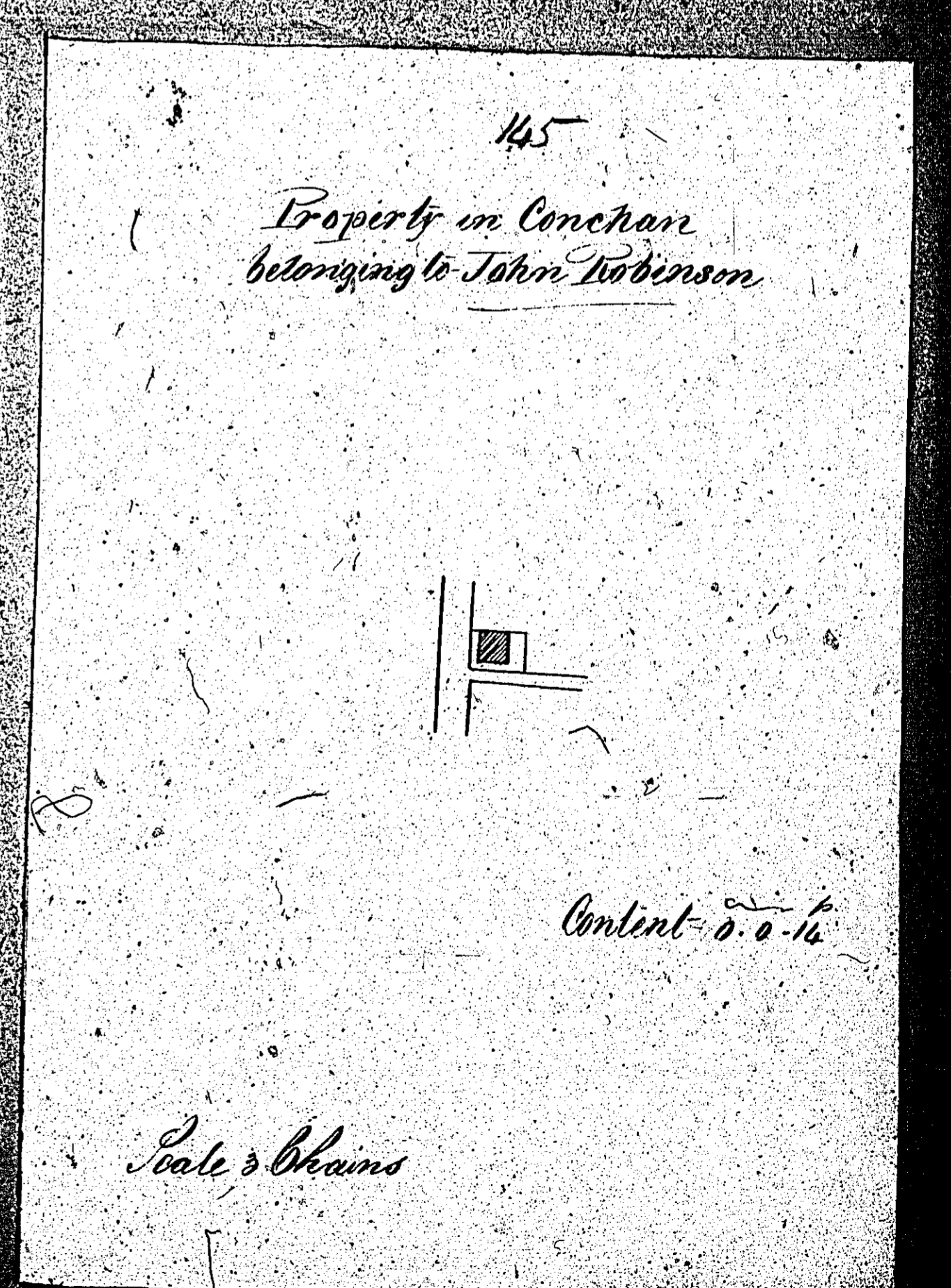
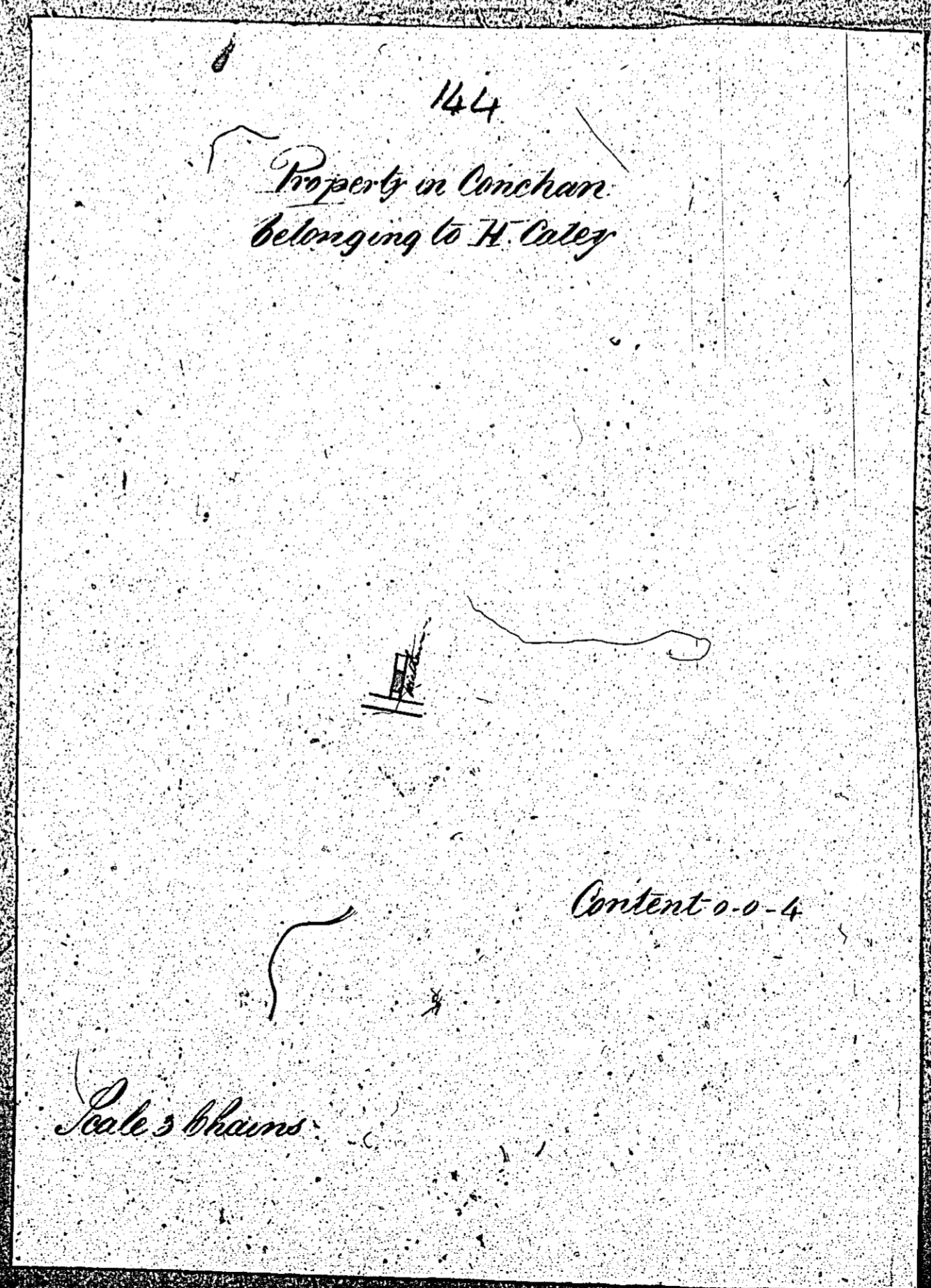
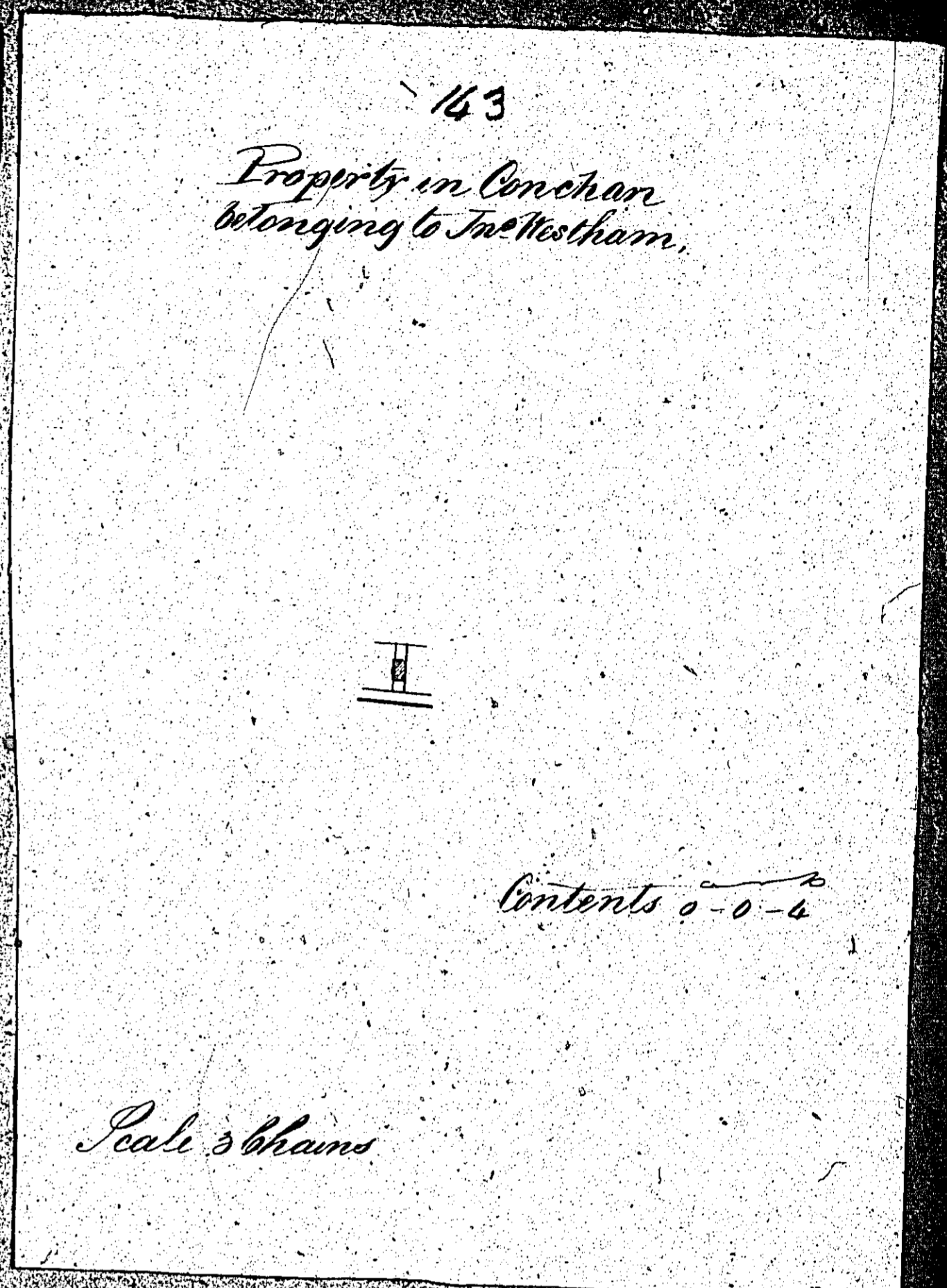
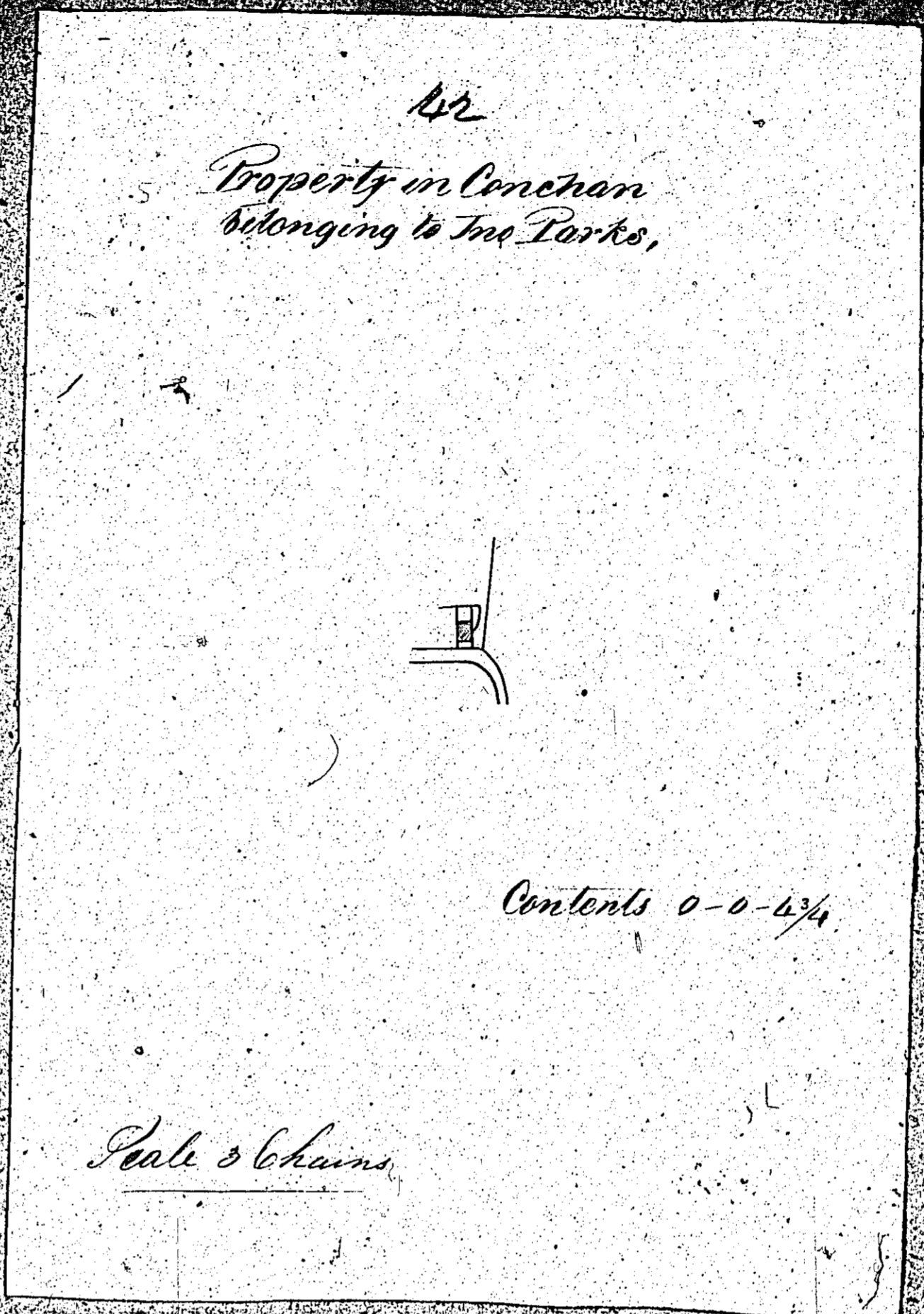
ISLE OF MAN GOVERNMENT: GENERAL REGISTRY

ASYLUM PLANS: PARISH OF ONCHAN

Originals monotone

1:23

Onchan



ISLE OF MAN GOVERNMENT: GENERAL REGISTRY

ASYLUM PLANS: PARISH OF ONCHAN

Originals monotone

1:23

