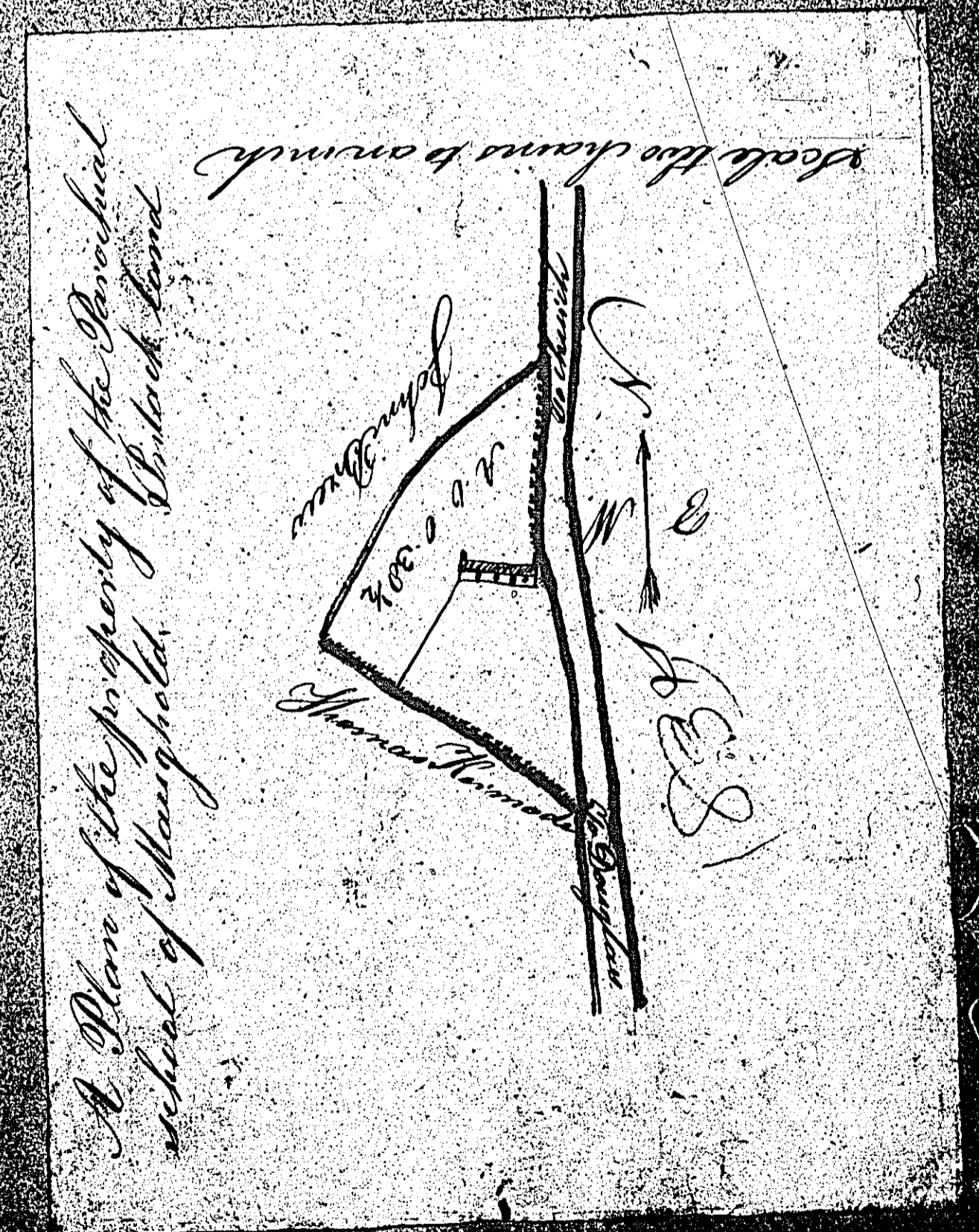
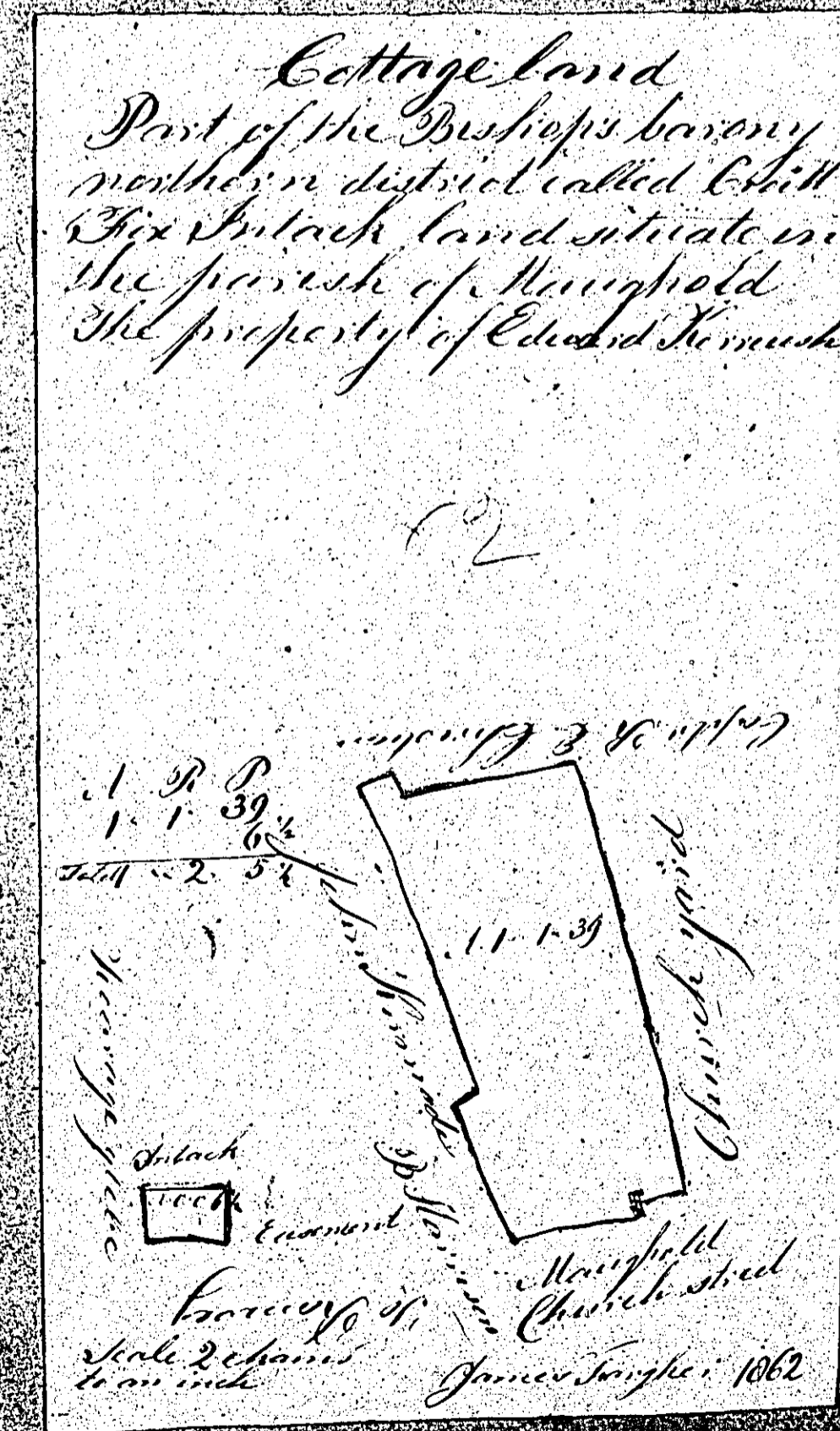
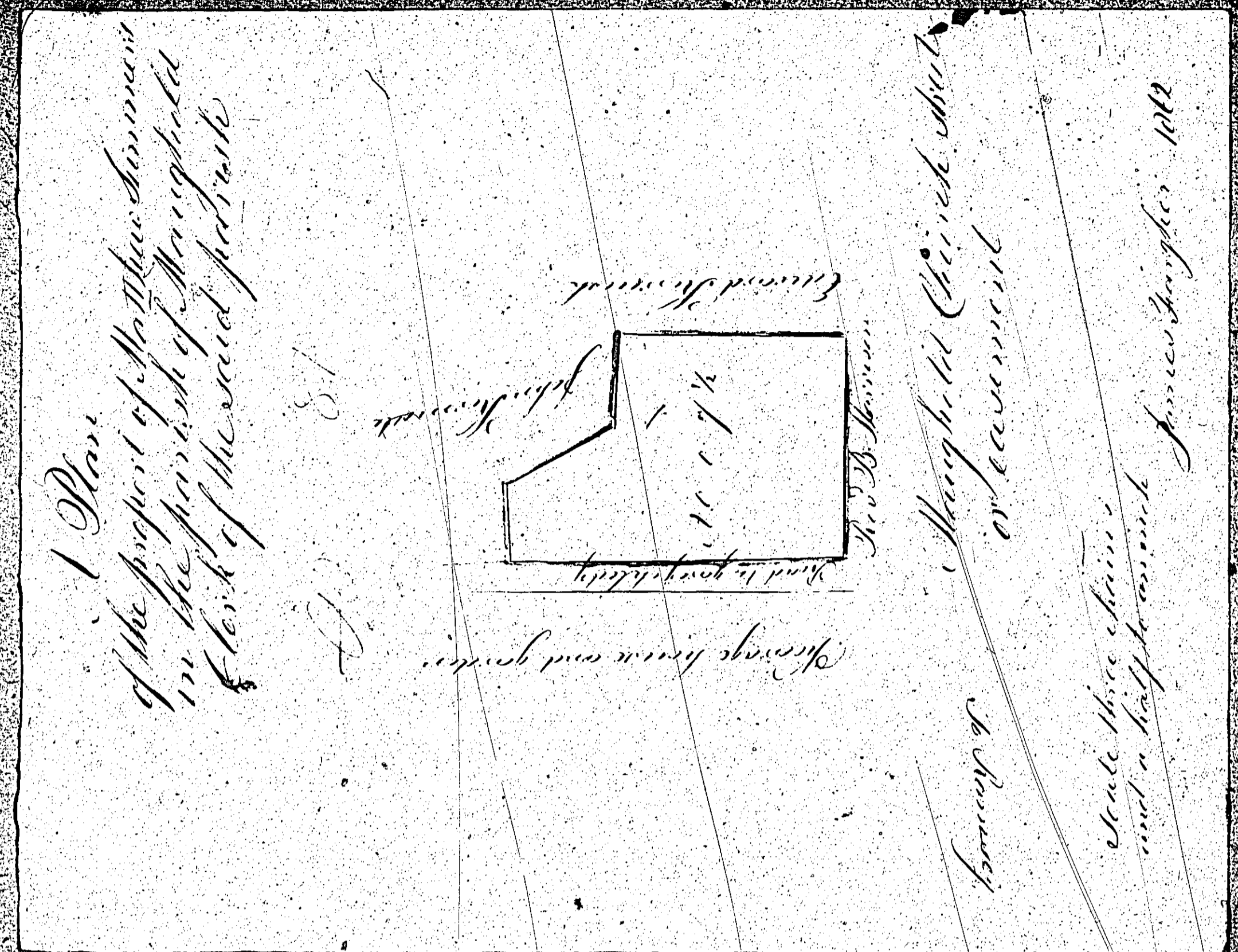


ISLE OF MAN GOVERNMENT: GENERAL REGISTRY

ASYLUM PLANS: PARISH OF MAUGHOLD

Originals coloured (decorative)

1:23

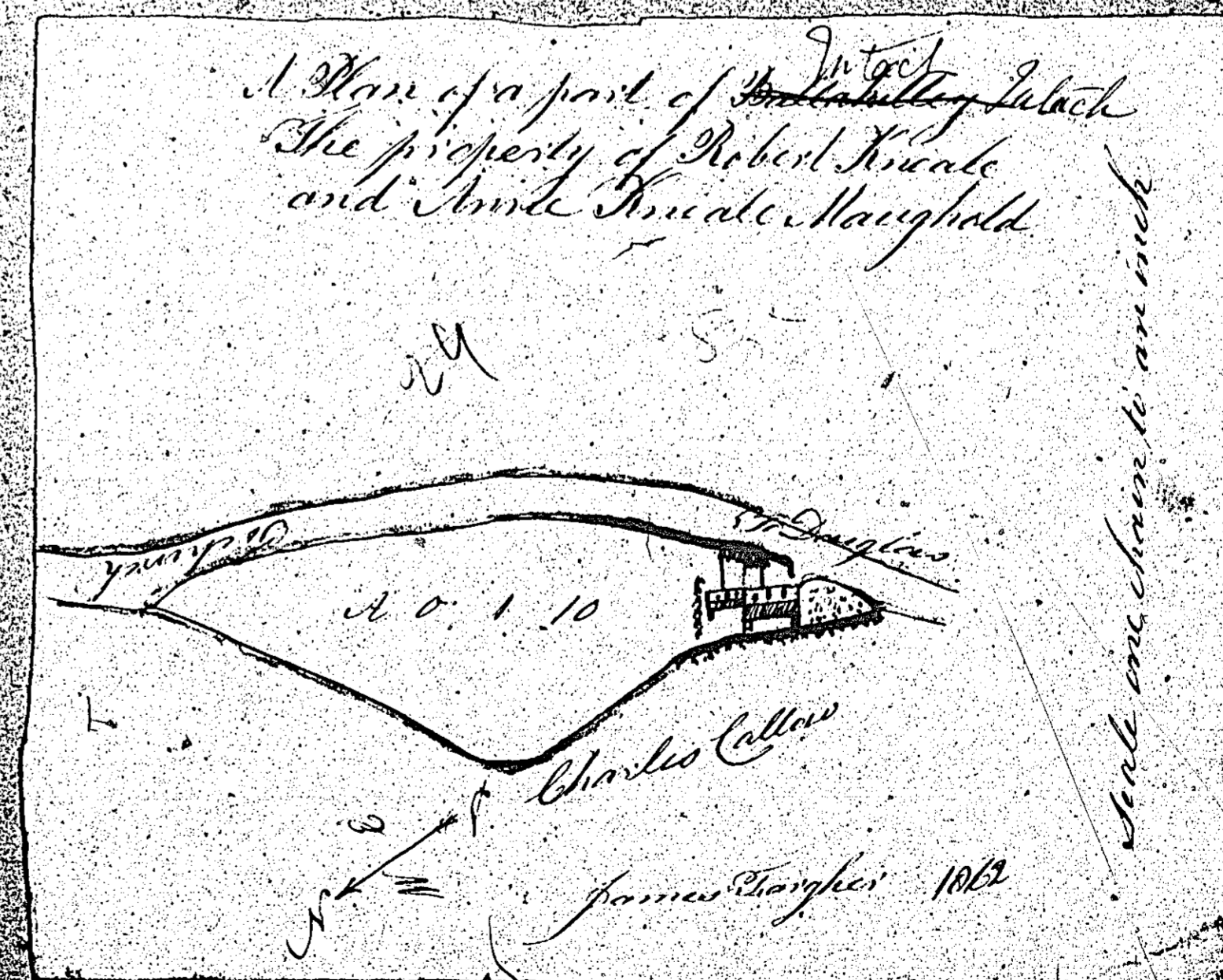
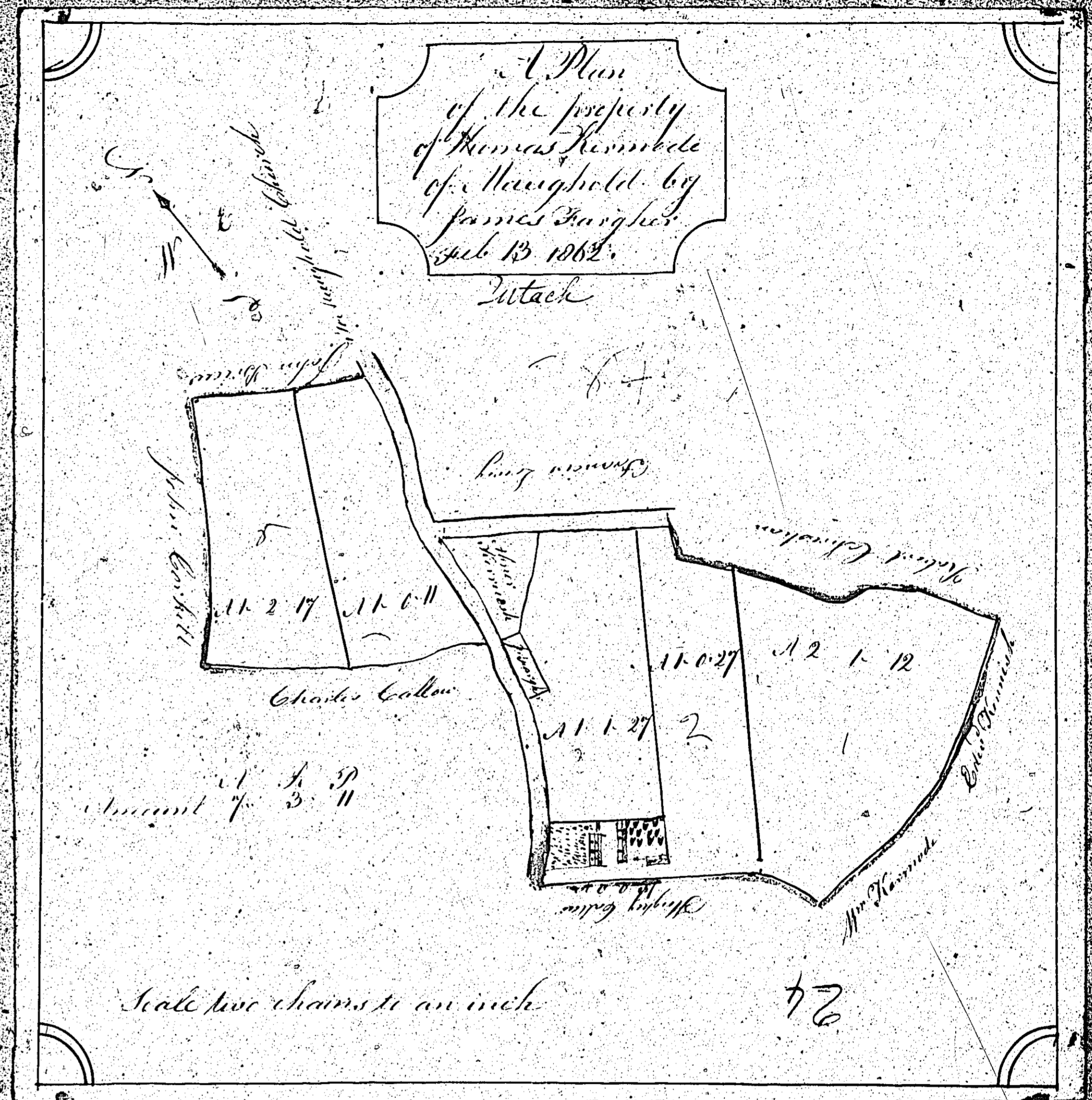


ISLE OF MAN GOVERNMENT: GENERAL REGISTRY

ASYLUM PLANS: PARISH OF MAUGHOLD

Originals coloured (decorative)

1:23

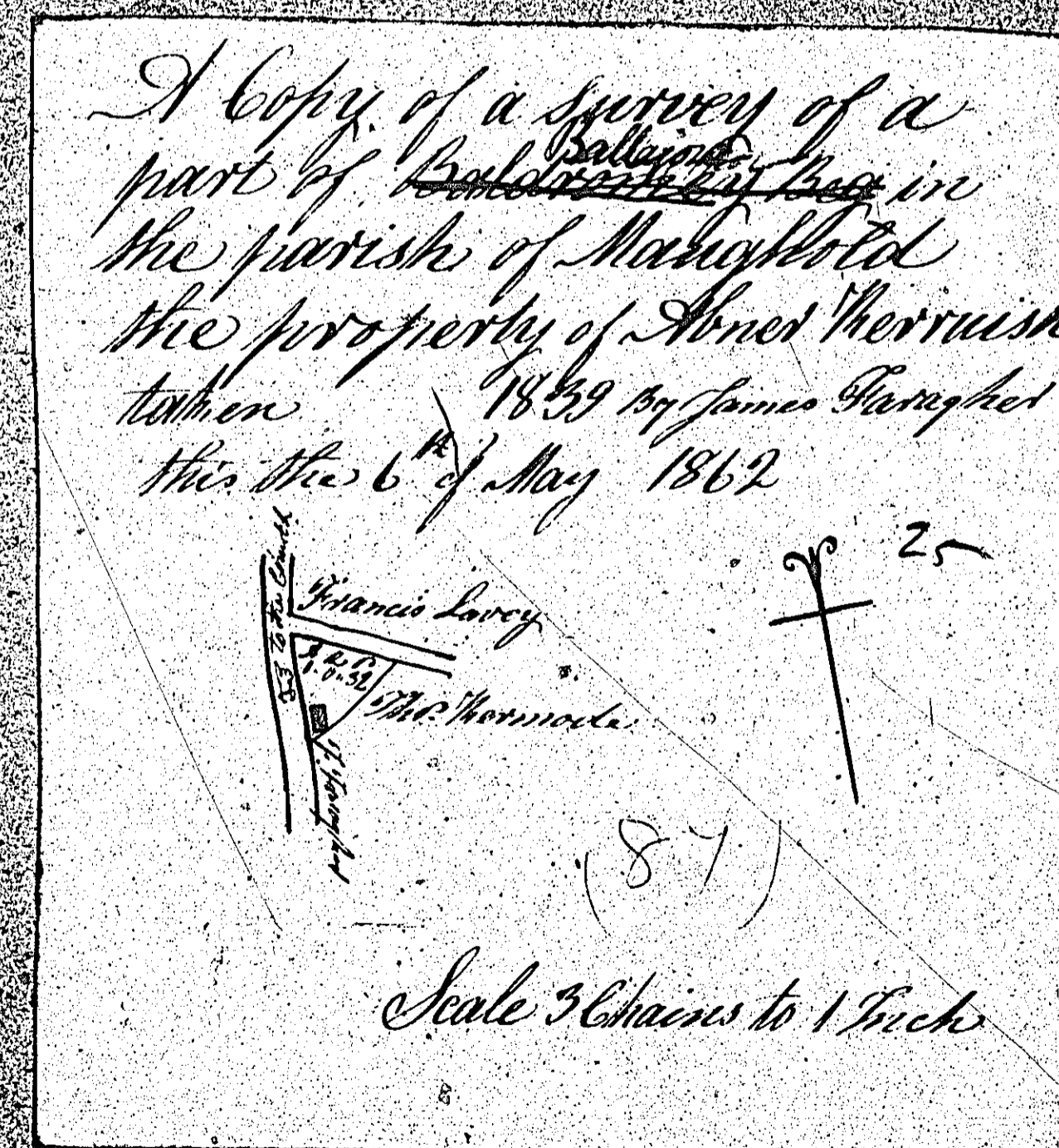
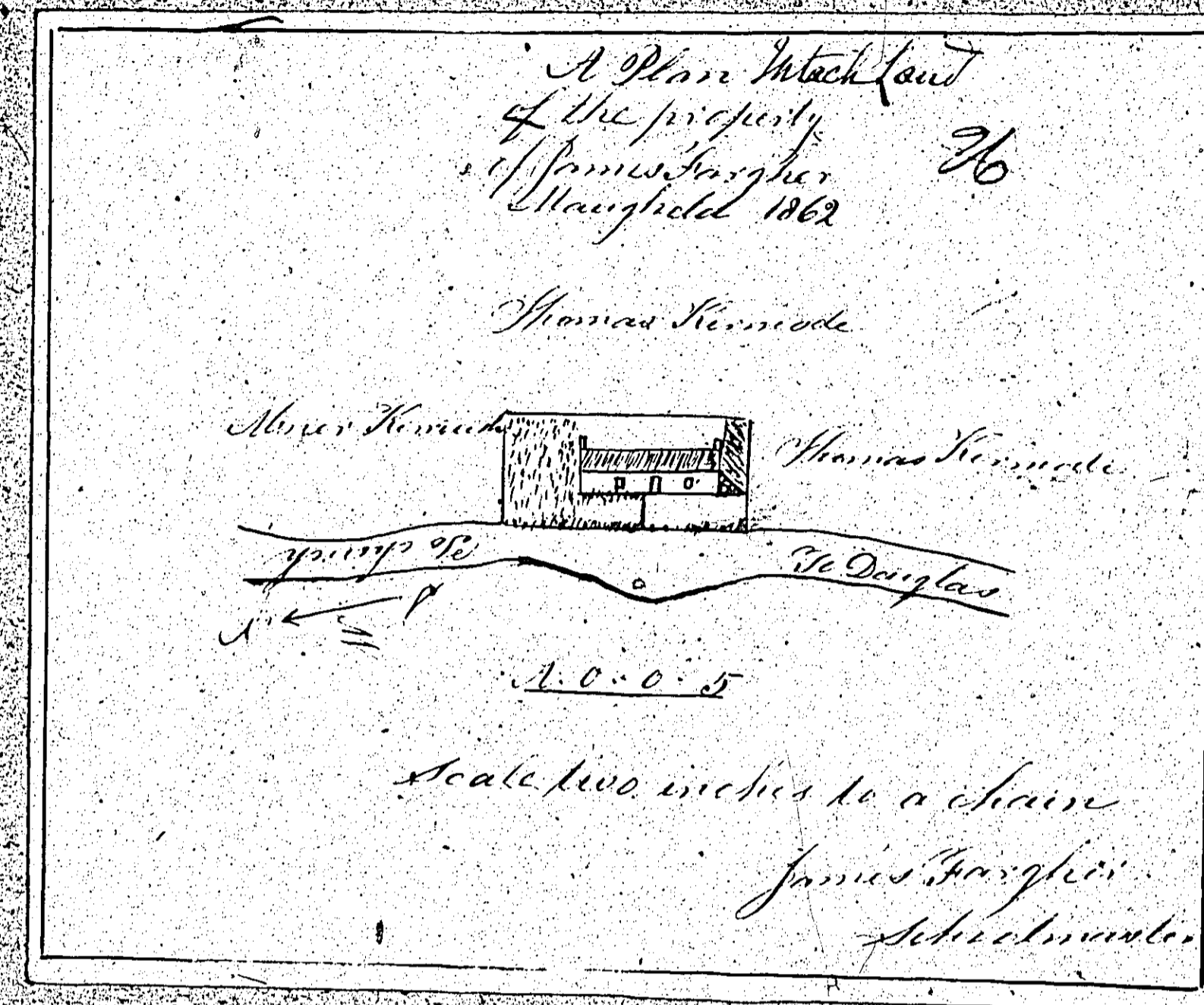


ISLE OF MAN GOVERNMENT: GENERAL REGISTRY

ASYLUM PLANS: PARISH OF MAUGHOLD

- 86 Original coloured (decorative)
- 87 Original monotone

1:23



ISLE OF MAN GOVERNMENT: GENERAL REGISTRY

ASYLUM PLANS: PARISH OF MAUGHOLD

Original monotone

1:23

20
 Ballajory
 in
 Maughold
 belonging
 to
 Francis Lowry

| Contents | |
|---------------|--------|
| No | arp |
| 1 | 1.3.16 |
| 2 | 3.0.30 |
| 3 | 3.1.9 |
| 4 | 1.3.6 |
| 5 | 2.3.32 |
| 6 | 0.2.2 |
| <hr/> | |
| Total 14.2.15 | |

13.2.15



Two Chains to an Inch

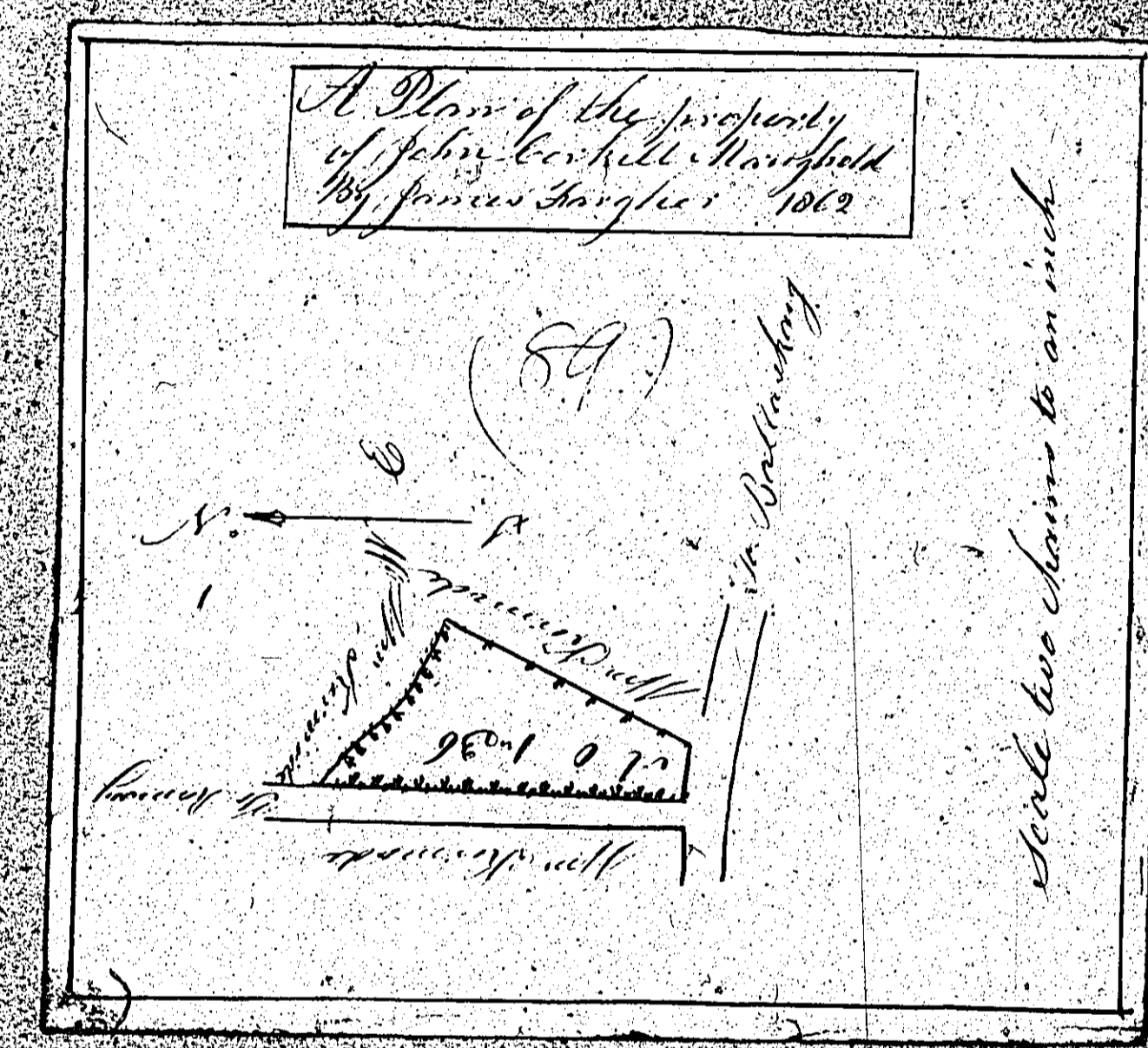
P. Smyth, Surveyor, 1862.

ISLE OF MAN GOVERNMENT: GENERAL REGISTRY

ASYLUM PLANS: PARISH OF MAUGHOLD

Original monotone

1:23



A Plan
of Ballajura Maughold
The property of Mr. Kenmore

90



James Kenmore

Scale three eights to an inch

ISLE OF MAN GOVERNMENT: GENERAL REGISTRY
 ASYLUM PLANS: PARISH OF MAUGHOLD
 Original coloured (decorative) 1:23