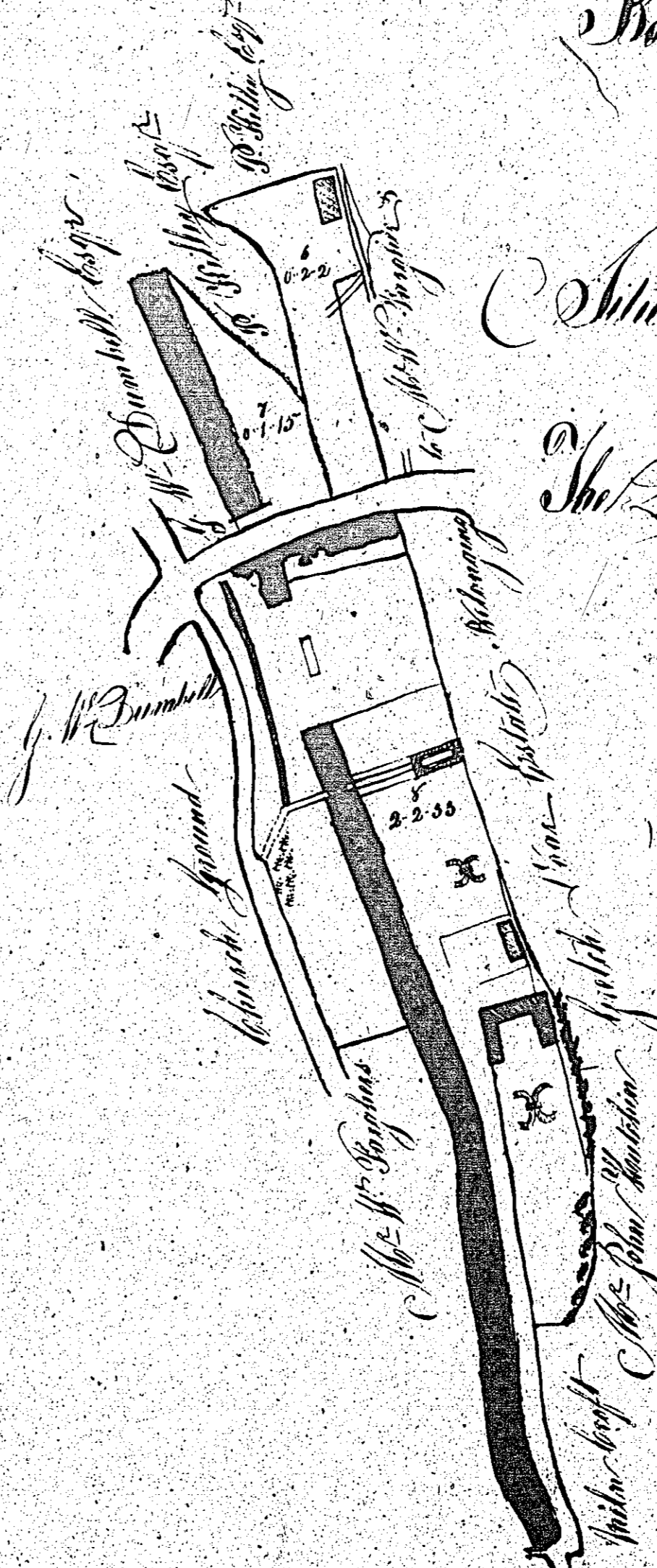
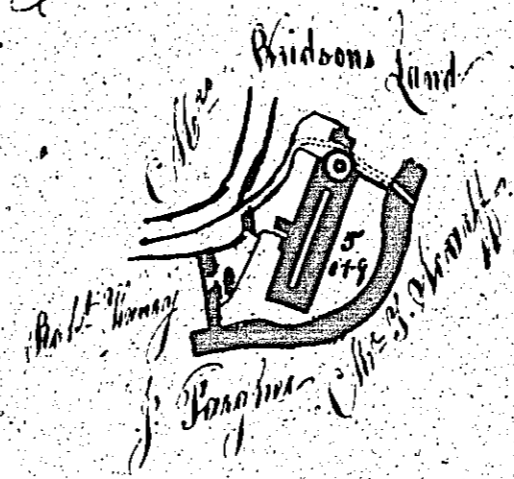
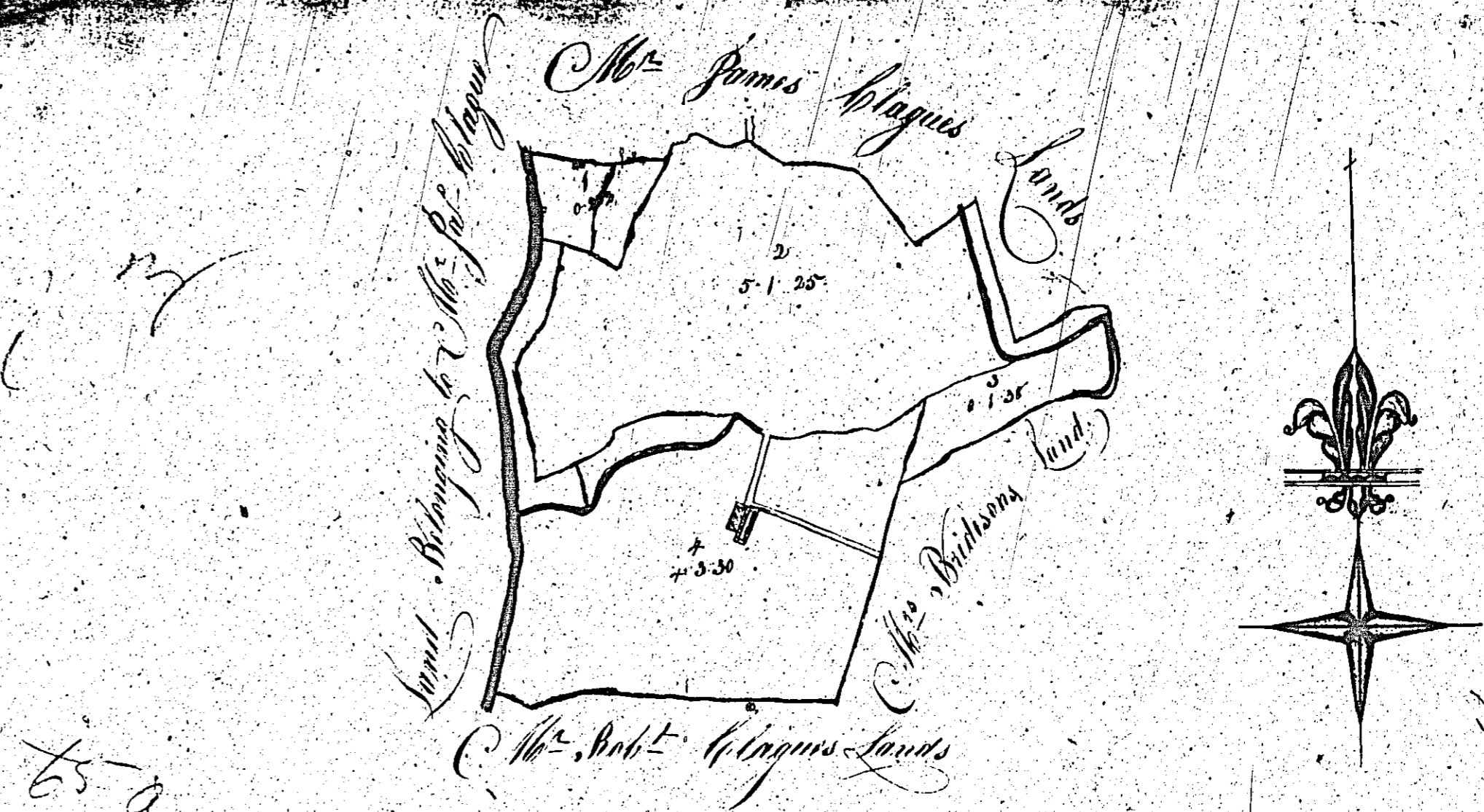


ISLE OF MAN GOVERNMENT: GENERAL REGISTRY

ASYLUM PLANS: PARISH OF LONAN

Original coloured

1:23



*Map and Survey of Part of  
the Quarrelands of  
Bolton and North Moor and  
Cottage and Paddock  
Lands*

*Situate in the Parish of Lonan  
Belonging to  
The Lany Mining Company  
1862 by Daniel Kelly*

*Contents*

	Perches	Rods	Feet
1	9	2	2
2	5	7	25
3	0	1	55
4	4	3	30
River	1	0	19
	11	1	57
River	5	0	1
	0	0	7
River	0	0	2
	7	0	13
River	8	2	25
	0	3	32
<b>Total</b>	<b>16</b>	<b>1</b>	<b>13</b>

*Shah's blamstosind*  
*Shah's blamstosind*



ISLE OF MAN GOVERNMENT: GENERAL REGISTRY

ASYLUM PLANS: PARISH OF LONAN

Original monotone

1:23

*Bronk B. Shule* 24  
in  
*Lonan*  
belonging to  
*John Ballon*  
*3*  
*Content* *1-0-14* *2 (trans to an Irish)*  
*3*  
*Woods*  
*Surgeon 1862*



ISLE OF MAN GOVERNMENT: GENERAL REGISTRY

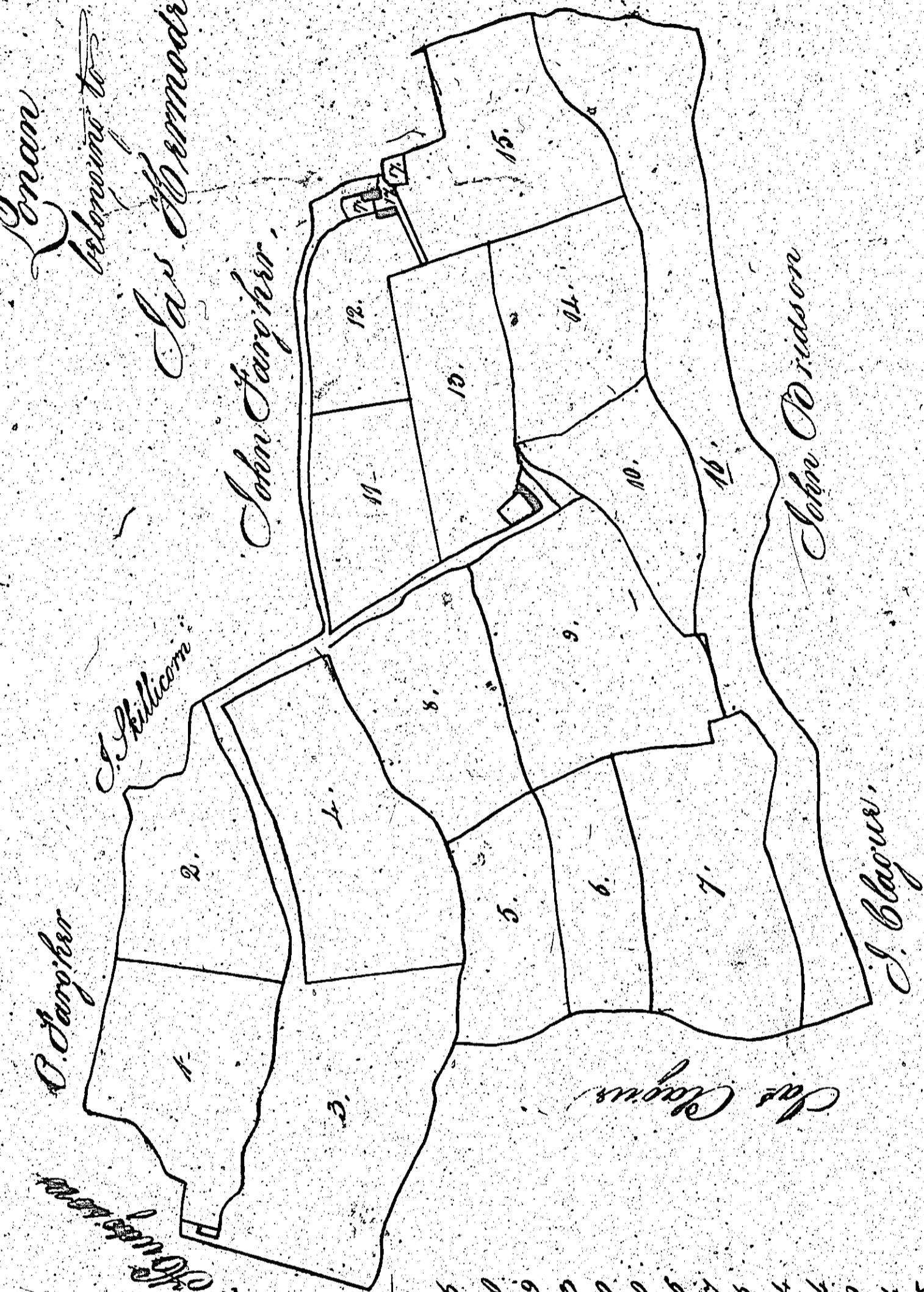
ASYLUM PLANS: PARISH OF LONAN

Original monotone

1:23

*David S. Chute*

*Plan belonging to  
Saw. Bernade.*



*61*  
*25*

No	arp
1	2.1.20
2	2.0.29
3	3.1.10
4	3.0.10
5	1.2.20
6	1.1.20
7	2.3.27
8	2.1.10
9	2.3.24
10	1.1.24
11	1.3.0
12	1.1.24
13	1.3.15
14	2.0.0
15	2.1.6
16	5.0.10
17	0.0.26
18	0.0.25
<b>Total</b>	<b>39.2.3</b>

*Three chains to an Inch.*

*Copy taken from the Plan, 1852  
for the purpose of the same under the  
Private Enclosure Act by  
Woods July or 1862*





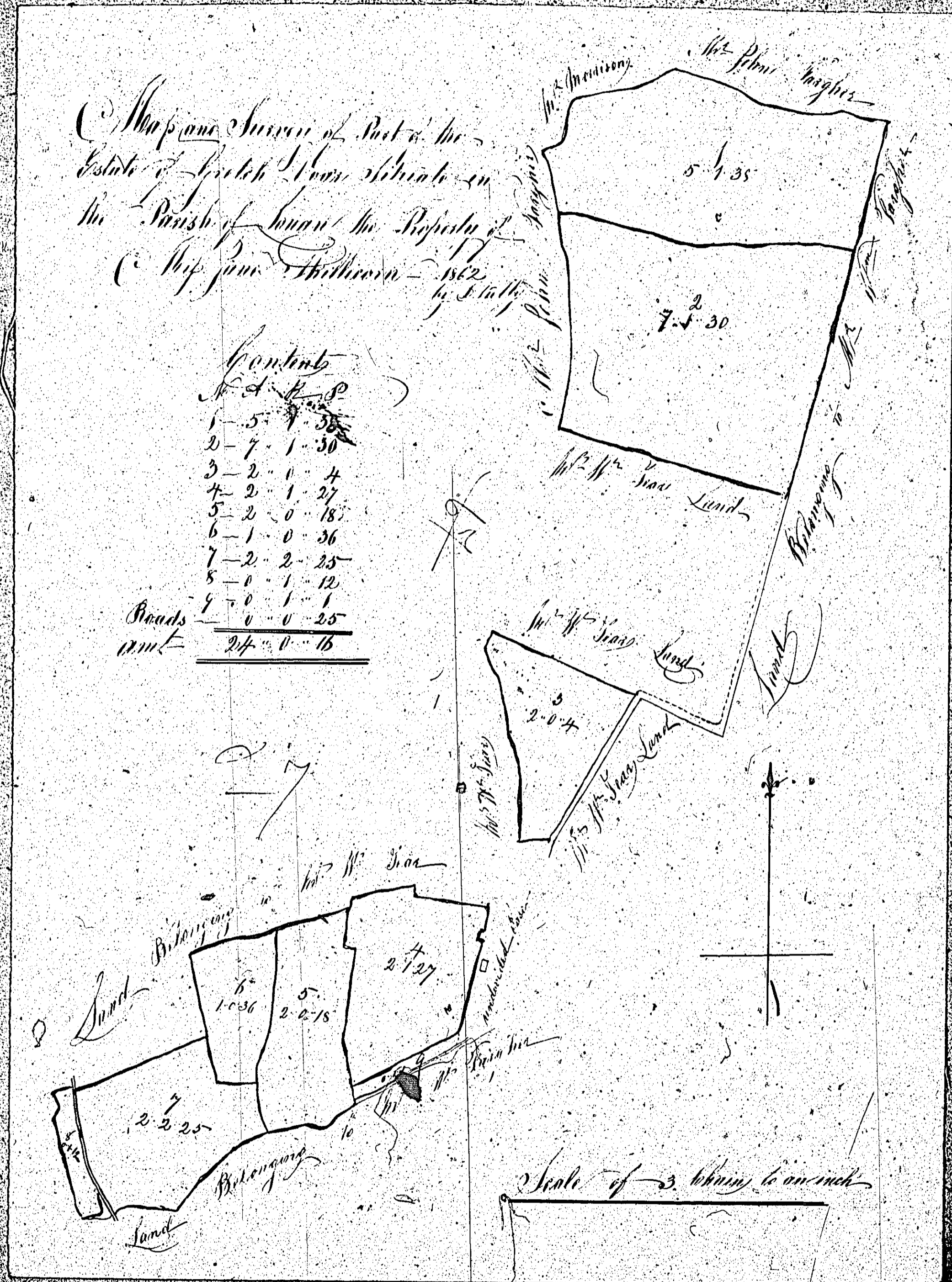


ISLE OF MAN GOVERNMENT: GENERAL REGISTRY

ASYLUM PLANS: PARISH OF LONAN

Original coloured

1:23





ISLE OF MAN GOVERNMENT: GENERAL REGISTRY

ASYLUM PLANS: PARISH OF LONAN

Original coloured

1:23

