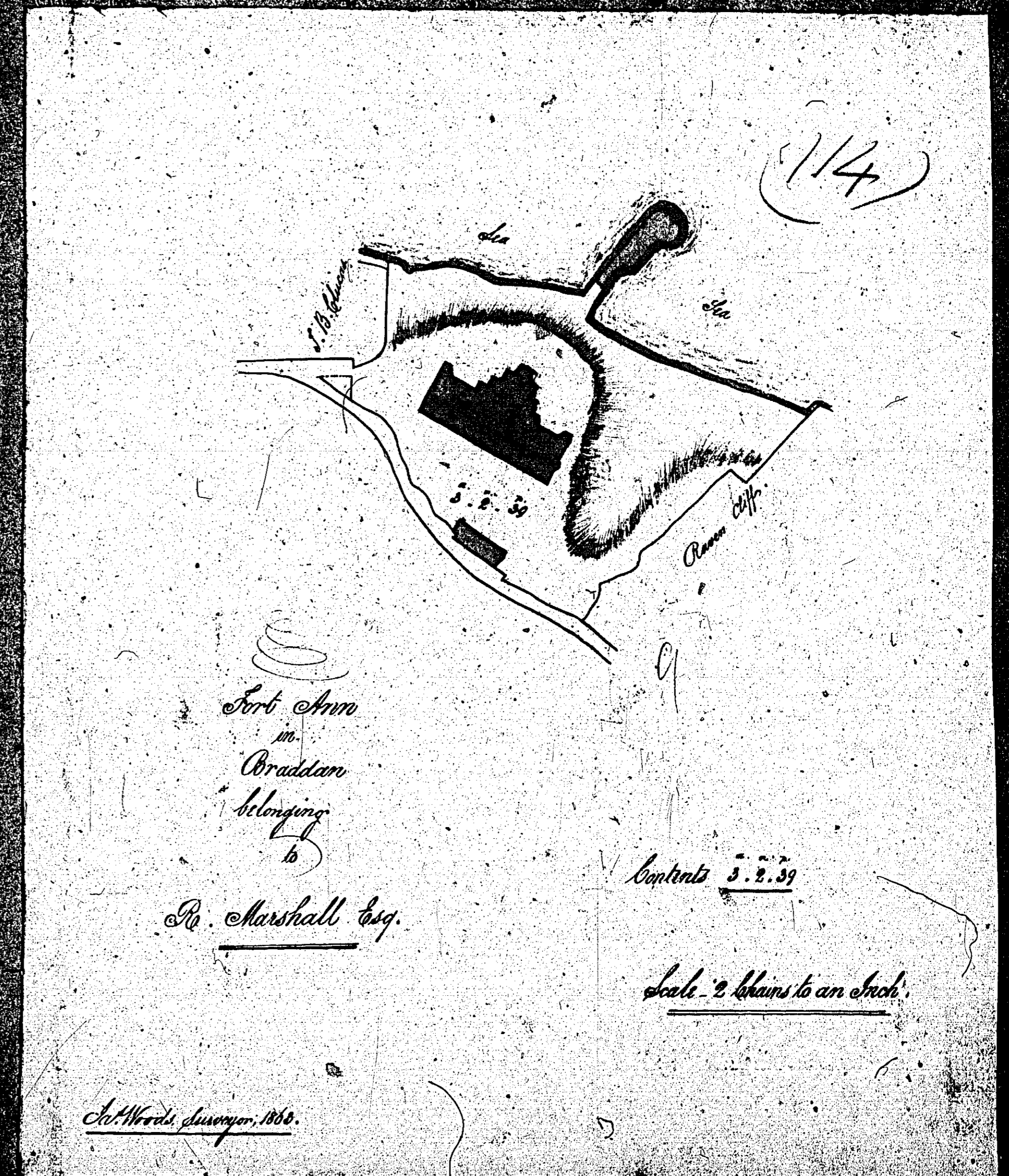


ISLE OF MAN GOVERNMENT: GENERAL REGISTRY

ASYLUM PLANS: PARISH OF BRADDAN

Original monotone

1:23

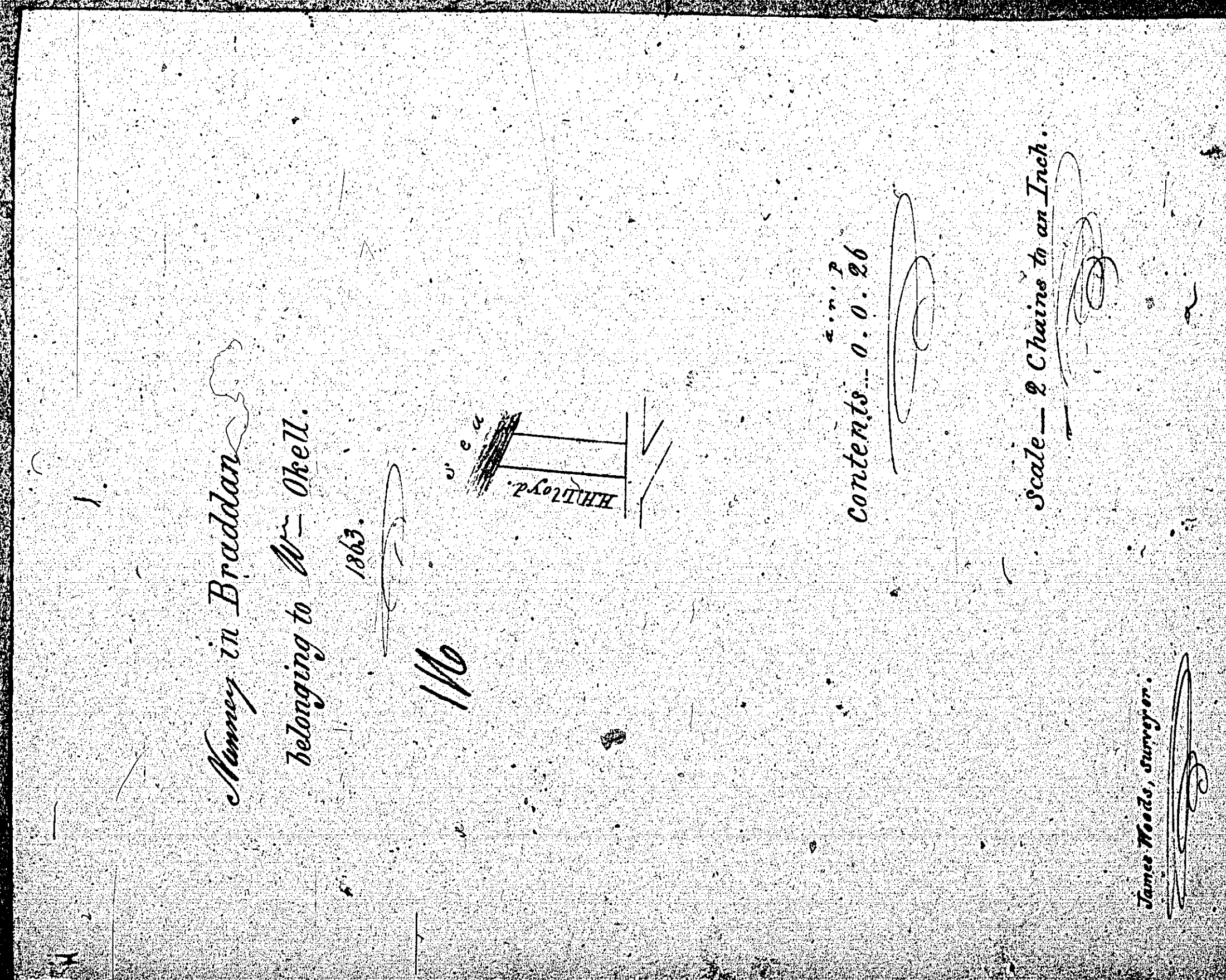
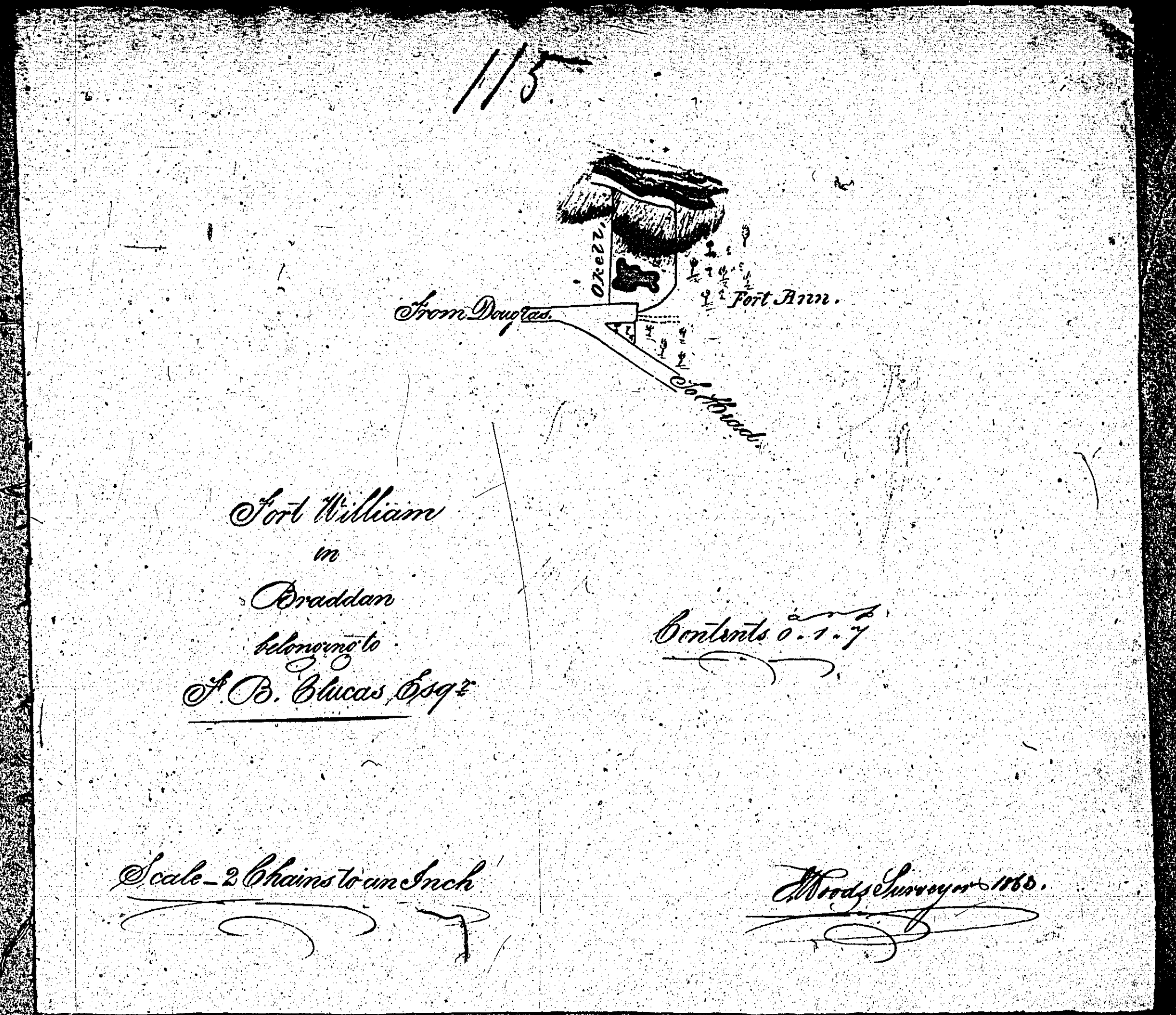


ISLE OF MAN GOVERNMENT: GENERAL REGISTRY

ASYLUM PLANS: PARISH OF BRADDAN

Originals monotone

1:23

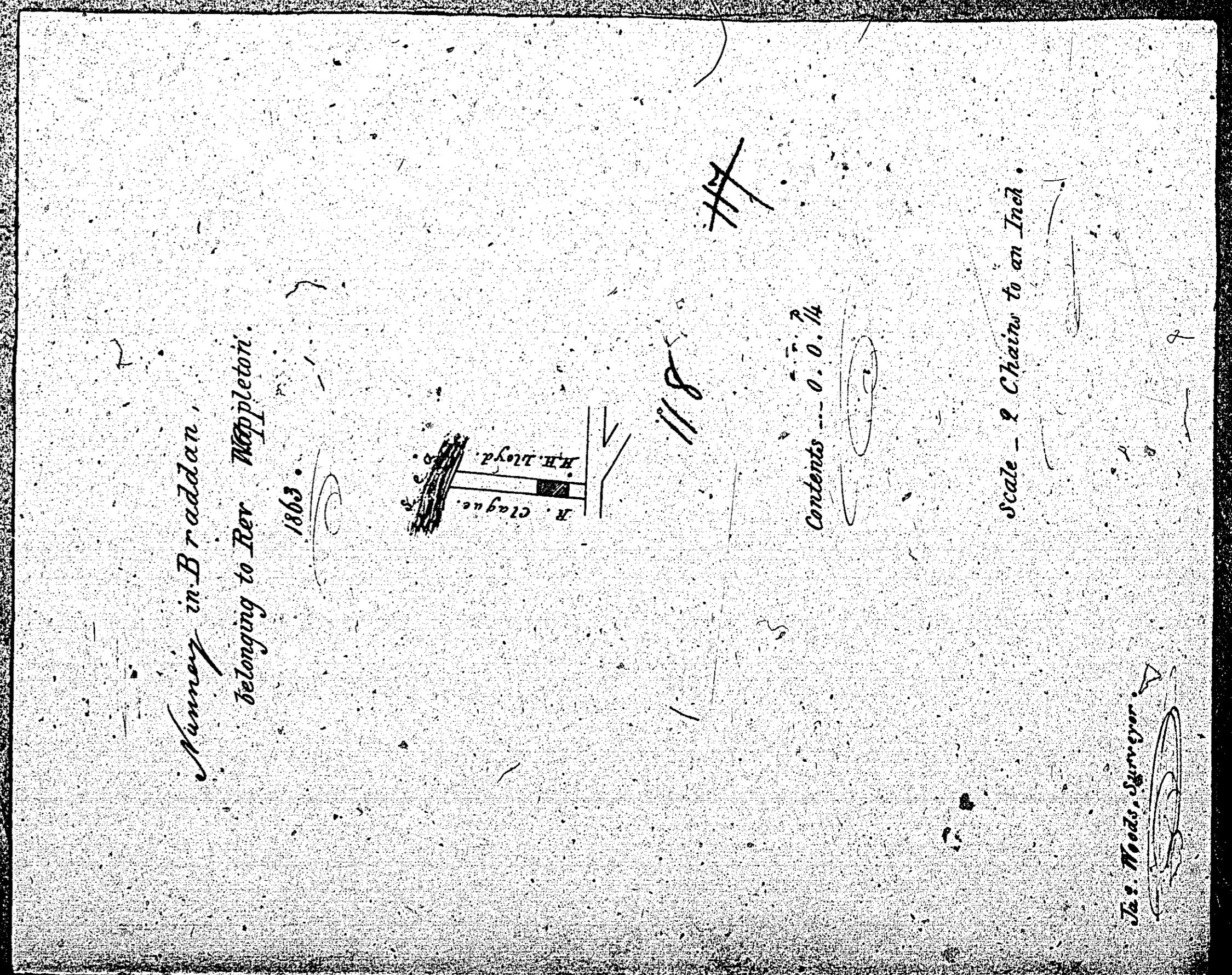
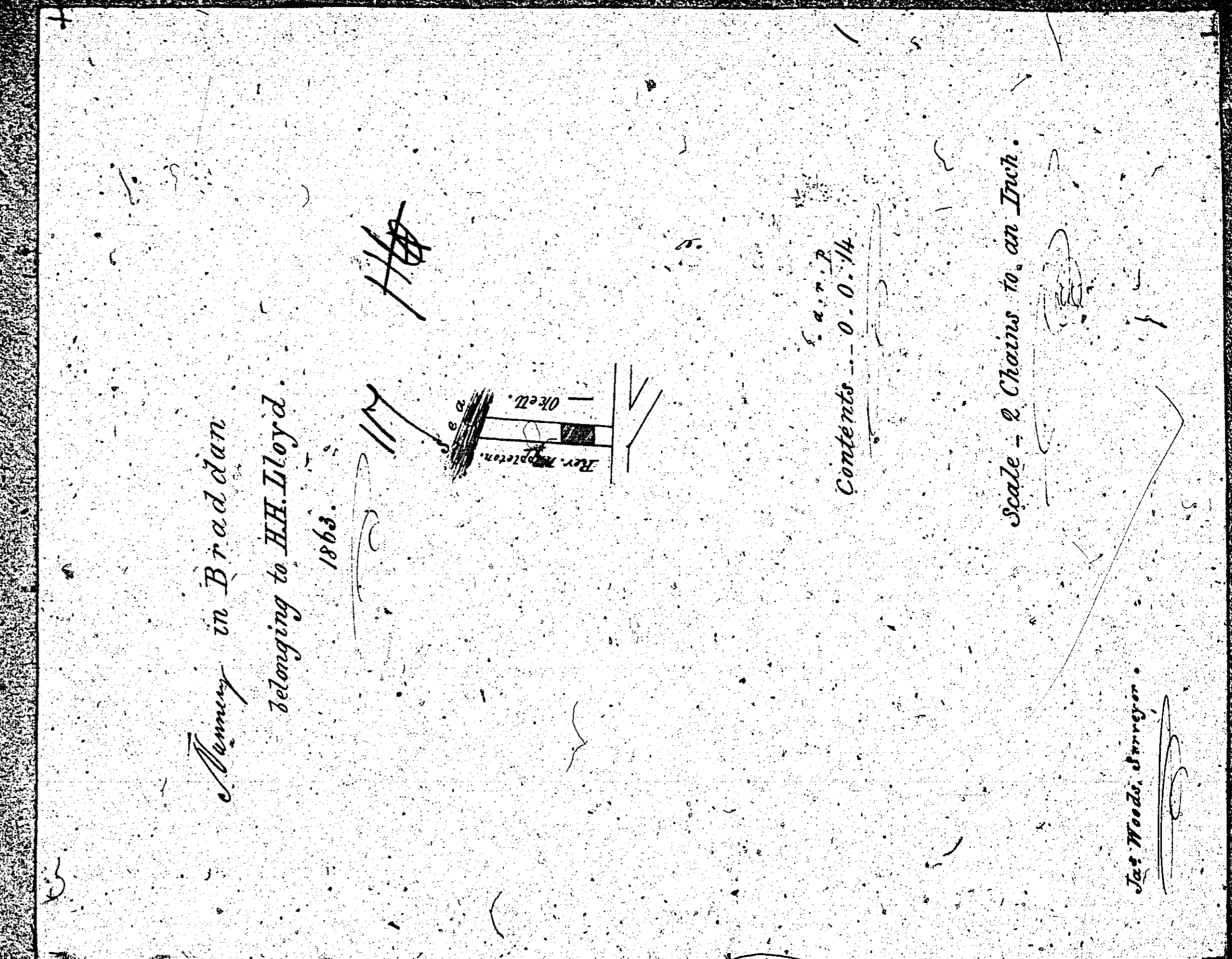


ISLE OF MAN GOVERNMENT: GENERAL REGISTRY

ASYLUM PLANS: PARISH OF BRADDAN

Originals monotone

1:23

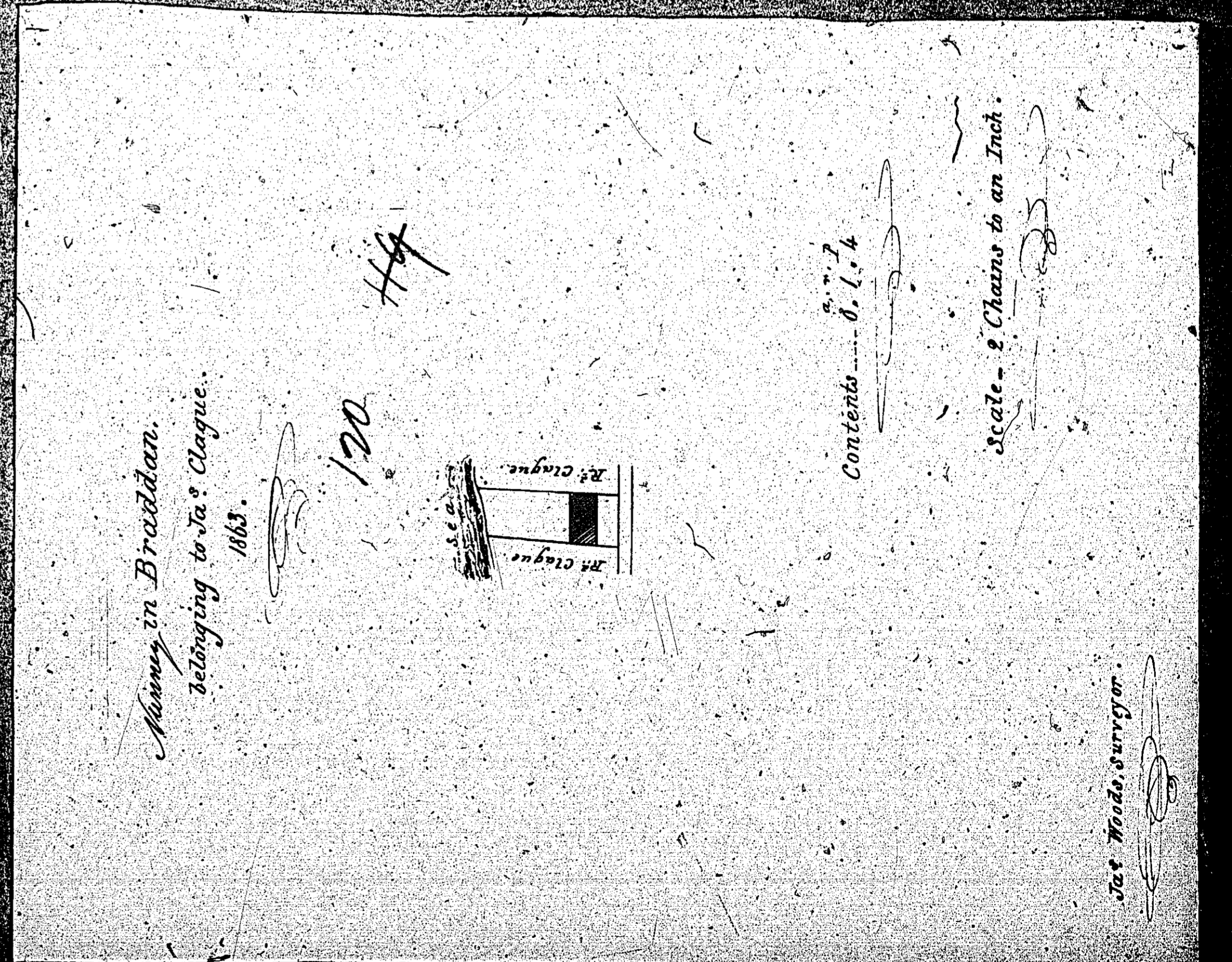
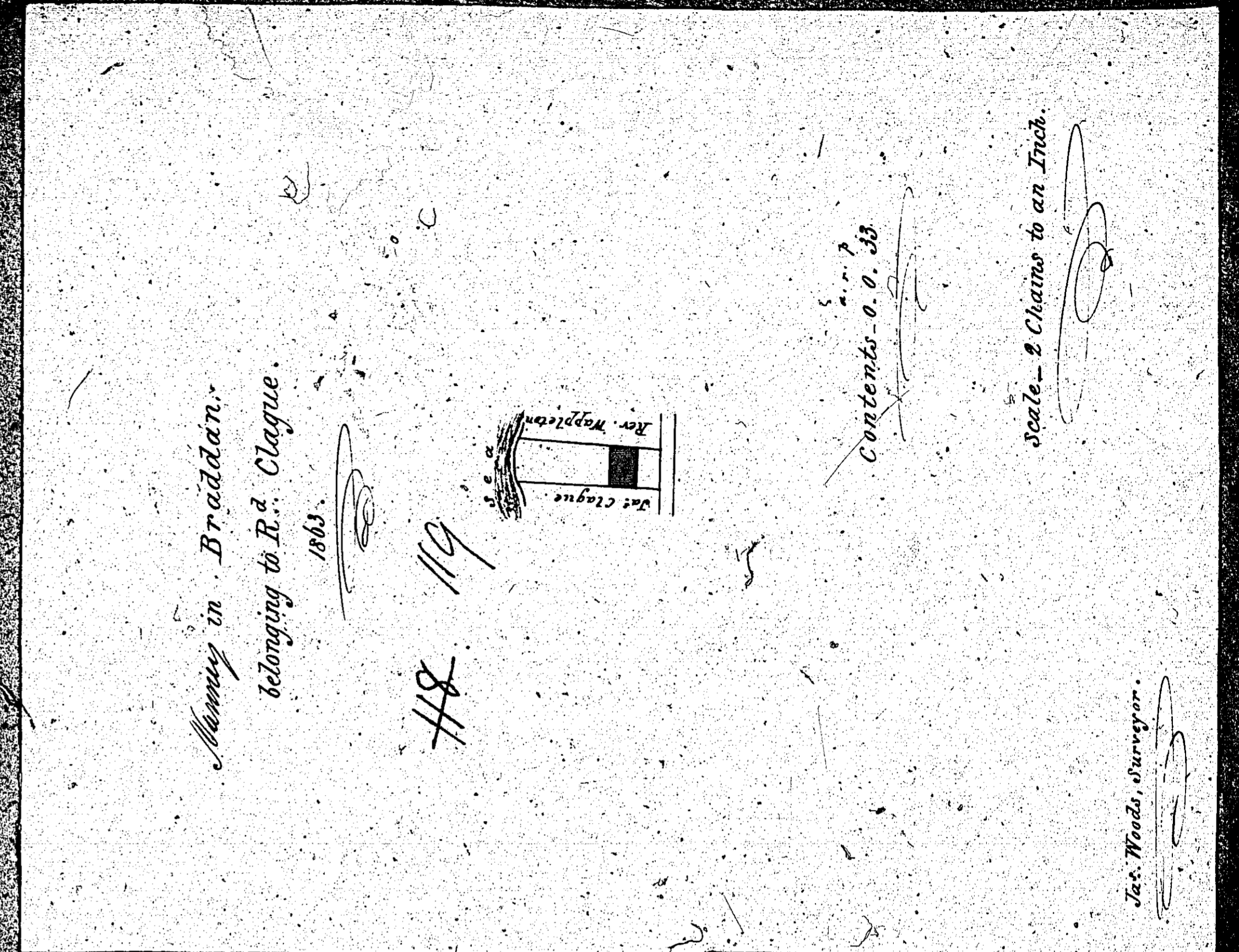


ISLE OF MAN GOVERNMENT: GENERAL REGISTRY

ASYLUM PLANS: PARISH OF BRADDAN

Originals monotone

1:23



ISLE OF MAN GOVERNMENT: GENERAL REGISTRY

ASYLUM PLANS: PARISH OF BRADDAN

Original coloured

1:23

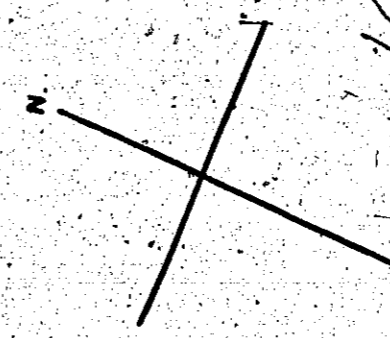
PART.

OF THE
University of

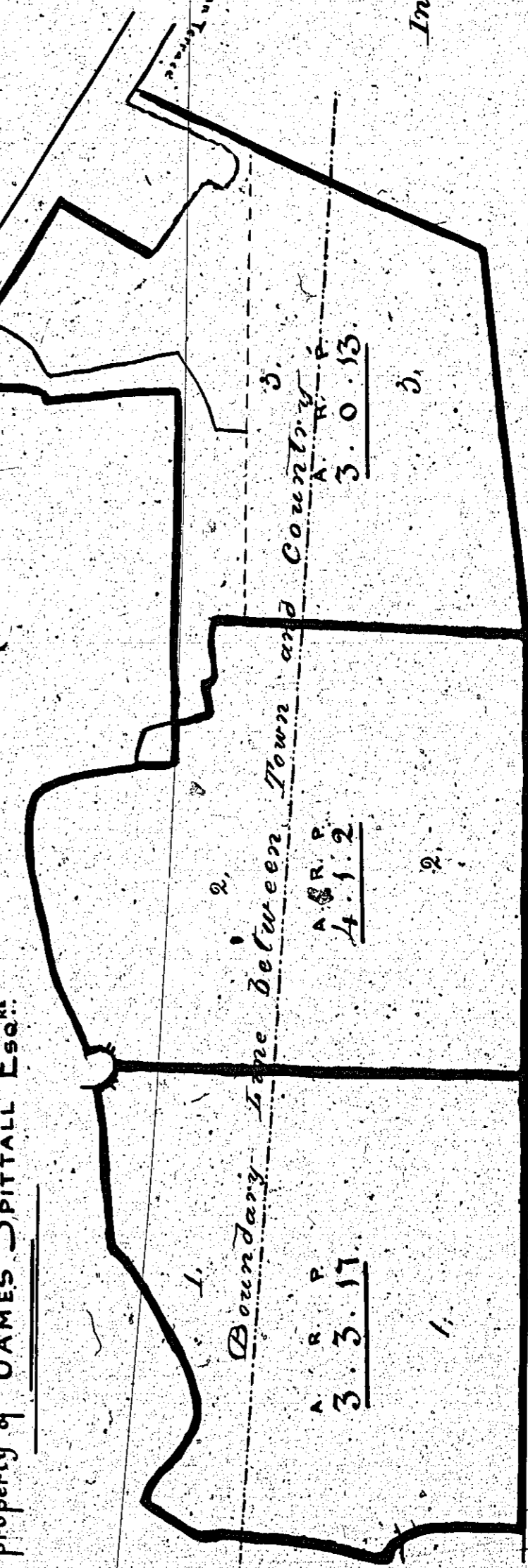
IN THE PARISH OF

BRADDAN

the property of JAMES SPITTALL ESQ.



121



Contents.	
1	2. 2. 30
2	2. 1. 1
3	1. 2. 32
In Country - 6. 2. 23	
1	1. 0. 21
2	1. 3. 35
3	1. 1. 21
The Tower - 1. 2. 0	

TOTAL CONTENTS 11. 6. 35

Scale of 2 chains to an inch.

*Copied from a Survey made
by Mr. John Liffman on
27 August 1861.*

ISLE OF MAN GOVERNMENT: GENERAL REGISTRY

ASYLUM PLANS: PARISH OF BRADDAN

Original monotone

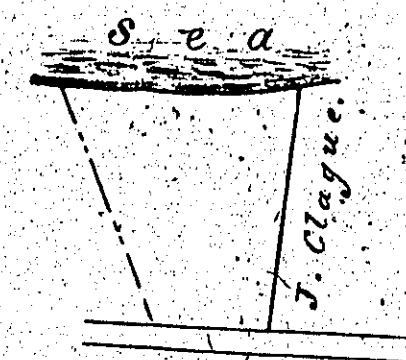
1:23

Munruin Braddan,

belonging to R^d. Clague.

1863.

122



122

Contents 0 - 1. 34

Scale - 2 Chains to an Inch.

Jas Woods, Surveyor.

END OF VOLUME