

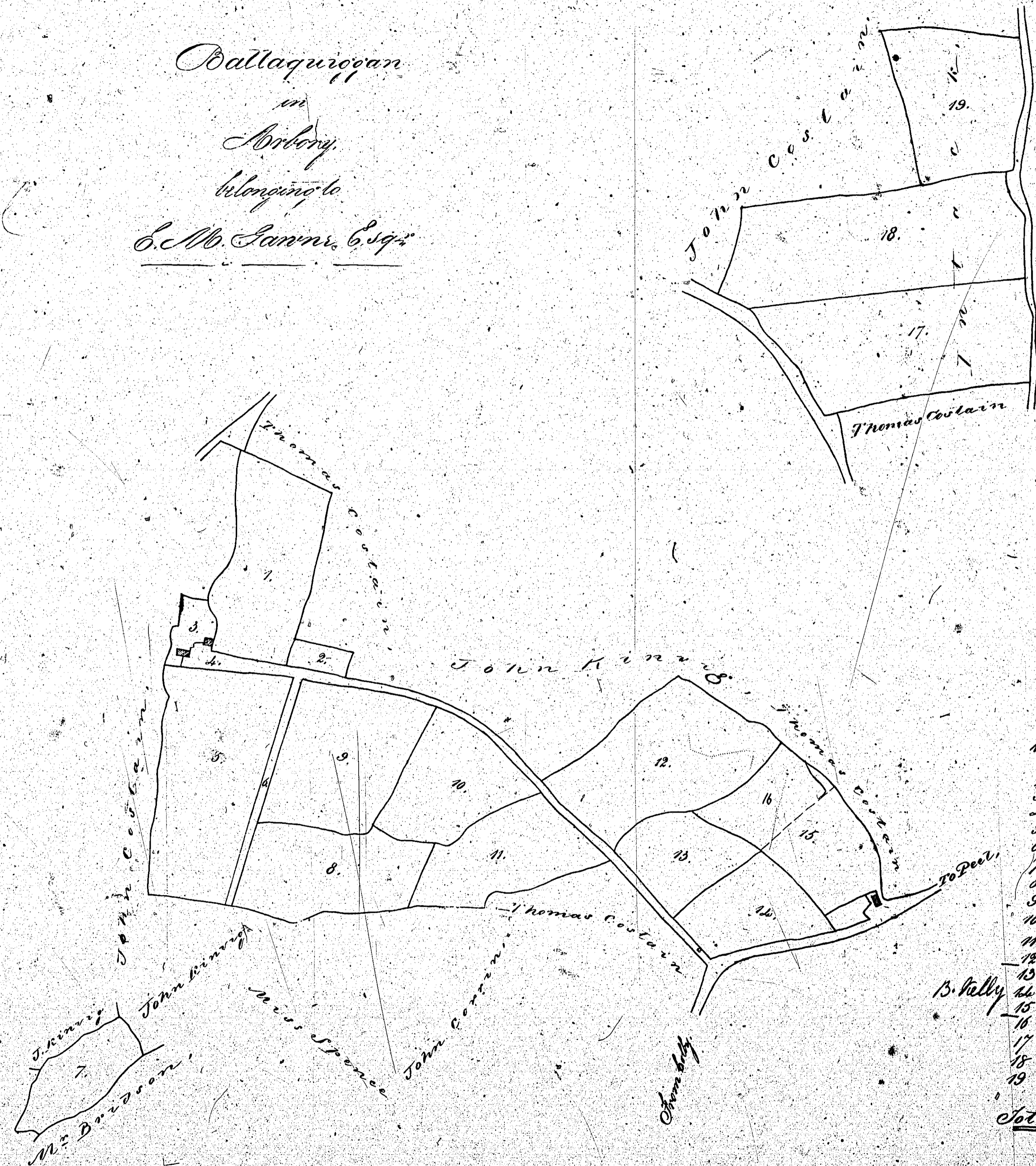
ISLE OF MAN GOVERNMENT: GENERAL REGISTRY

ASYLUM PLANS: PARISH OF ARBORY

Original monotone

1:23

Ballaquirogan  
in  
Arbory  
belonging to  
C. M. Sanner, Esq.



*Bordents.*

10	2.3.32
1	0.1.6
2	0.1.20
3	0.3.25
4	1.2.30
5	0.1.15
6	1.1.6
7	1.3.25
8	3.1.20
9	2.2.8
11	2.0.30
12	3.2.30
13	1.2.0
14	1.2.18
15	1.1.18
16	1.0.32
17	5.0.28
18	5.1.17
19	3.0.7
<u>Total 43.5.7</u>	

B. Kelly

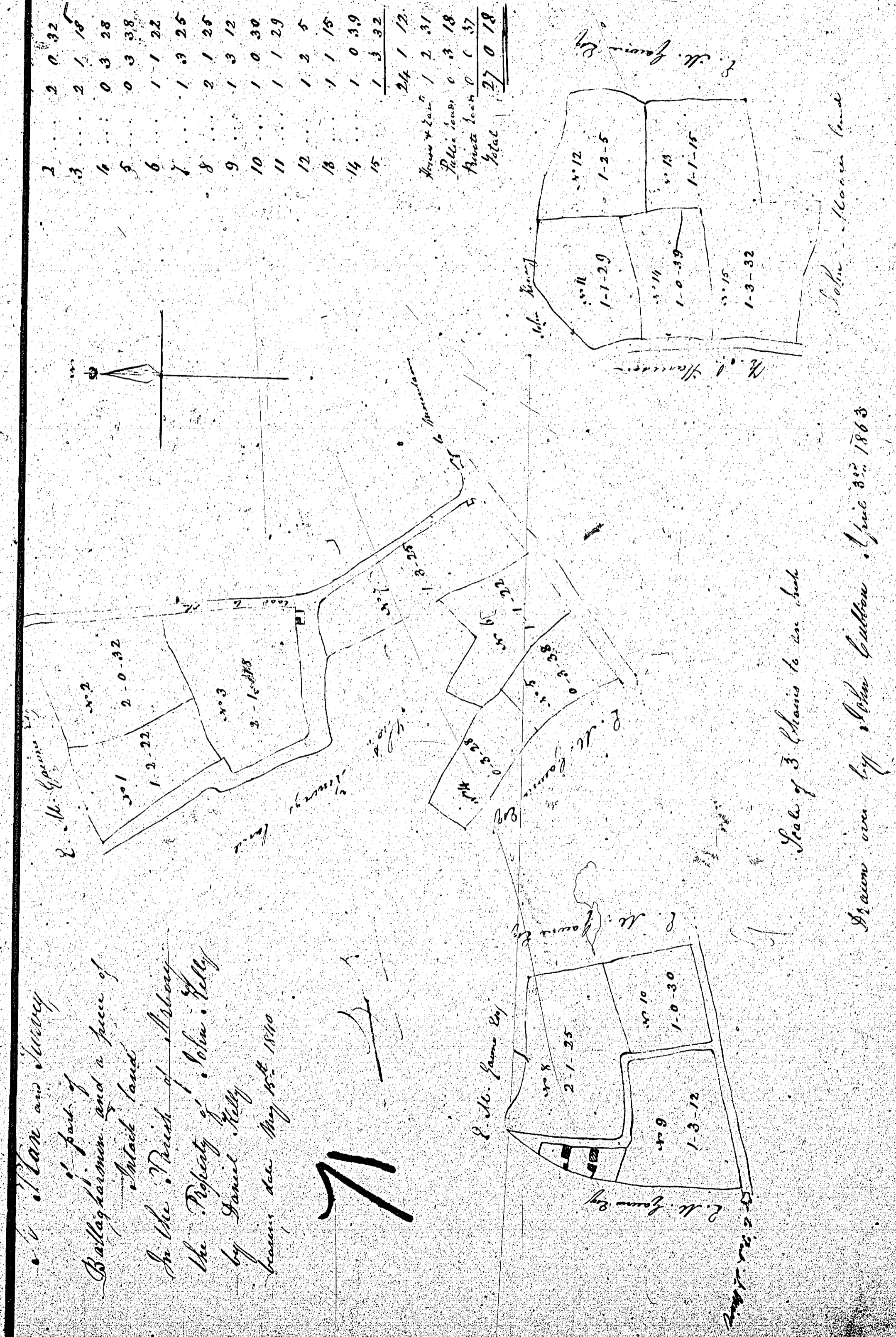
Scale 3 chains to an Inch.

Copied from the Survey by  
Mr. Sanner, Esq. 1863.

ISLE OF MAN GOVERNMENT: GENERAL REGISTRY  
 ASYLUM PLANS: PARISH OF ARBORY

Original monotone

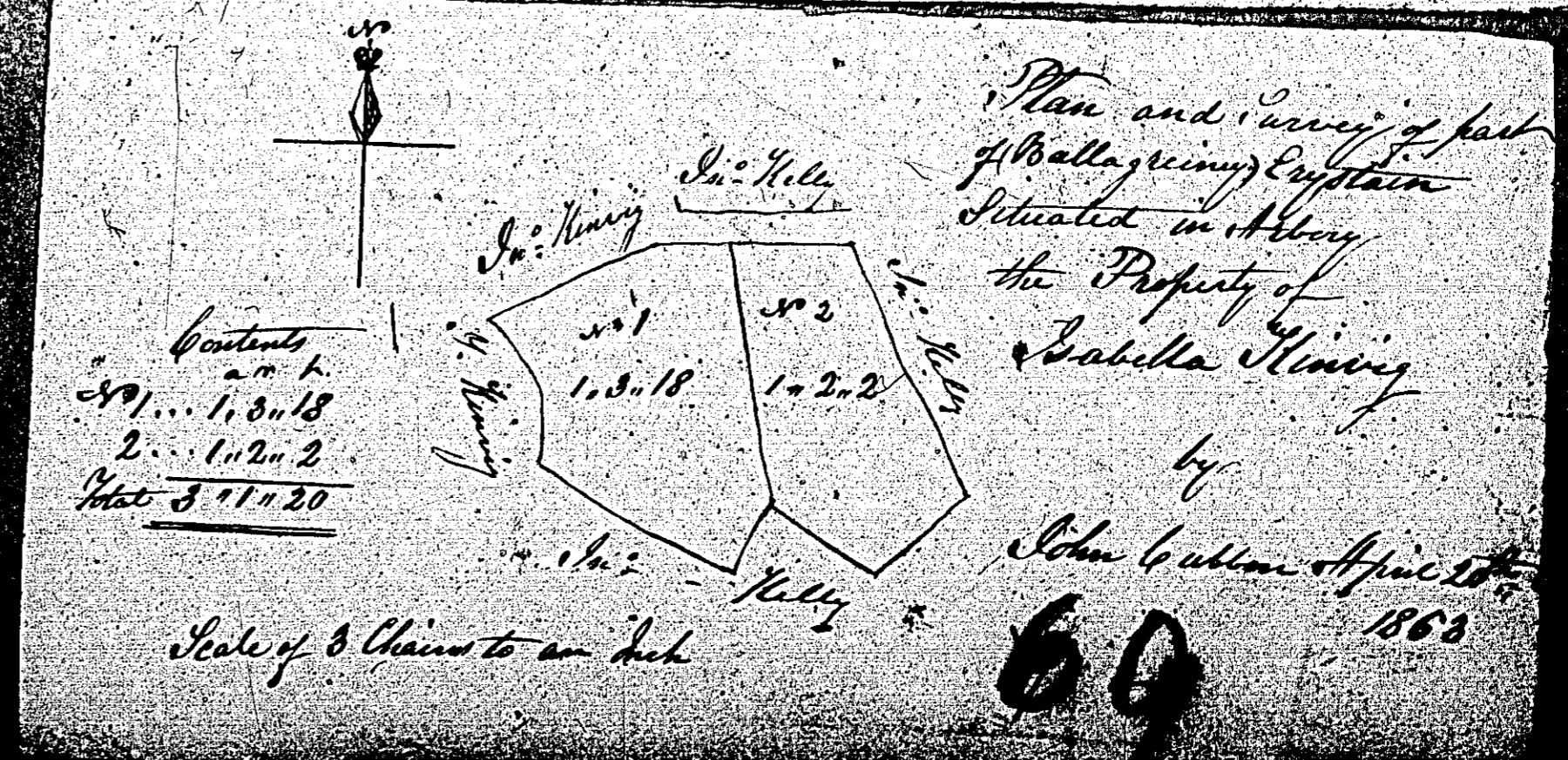
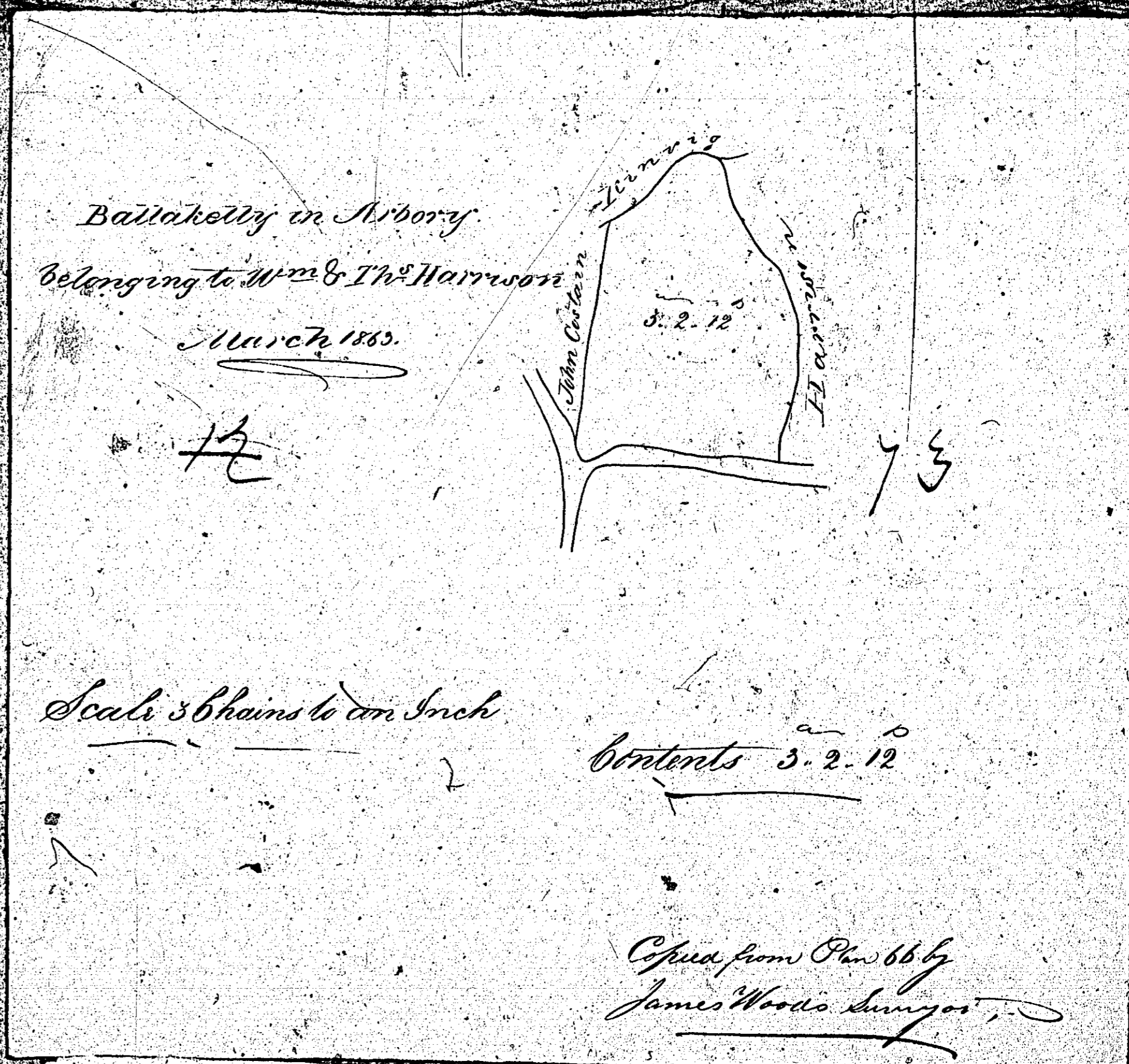
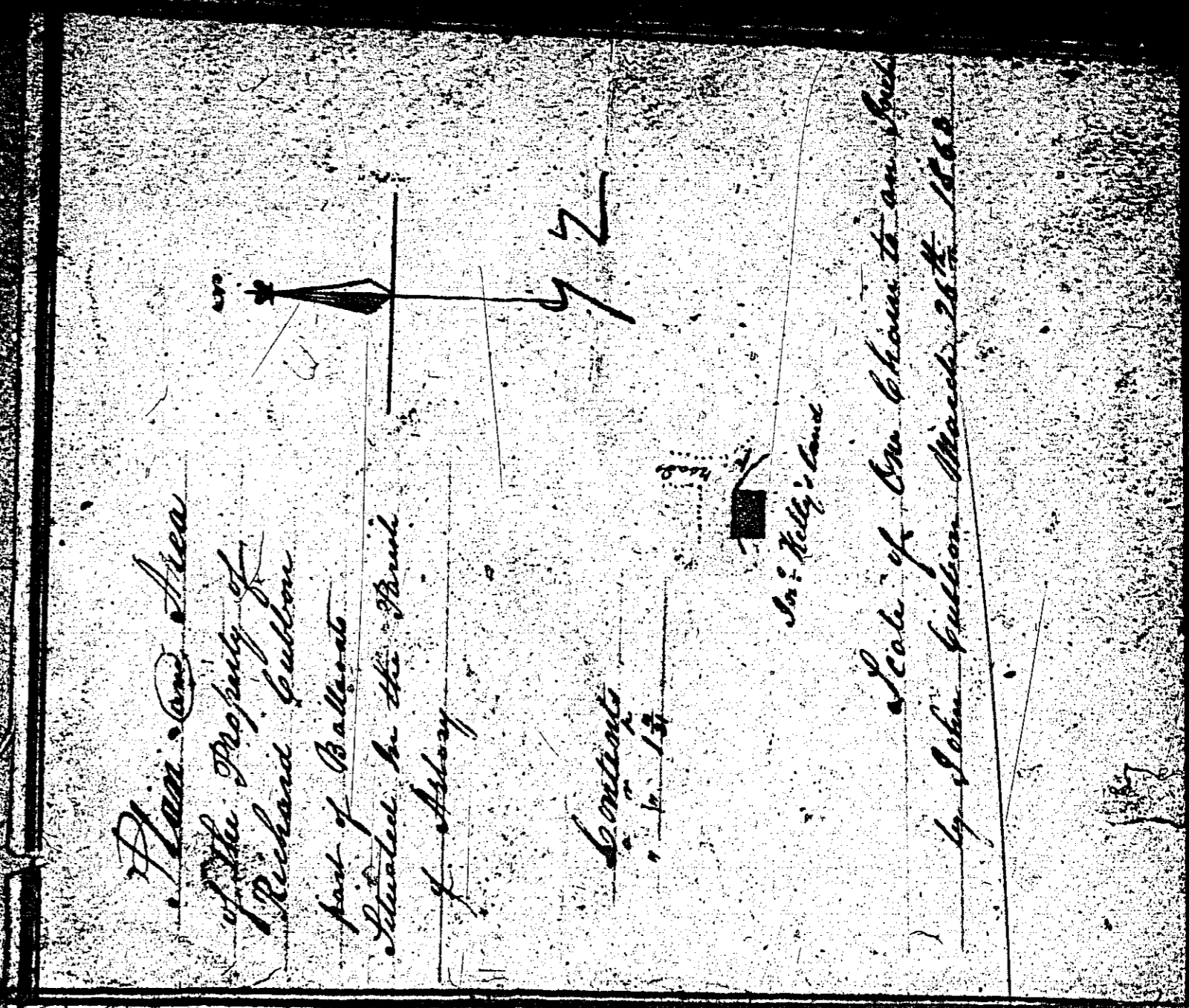
1:23



ISLE OF MAN GOVERNMENT: GENERAL REGISTRY  
 ASYLUM PLANS: PARISH OF ARBORY

Originals monotone

1:23

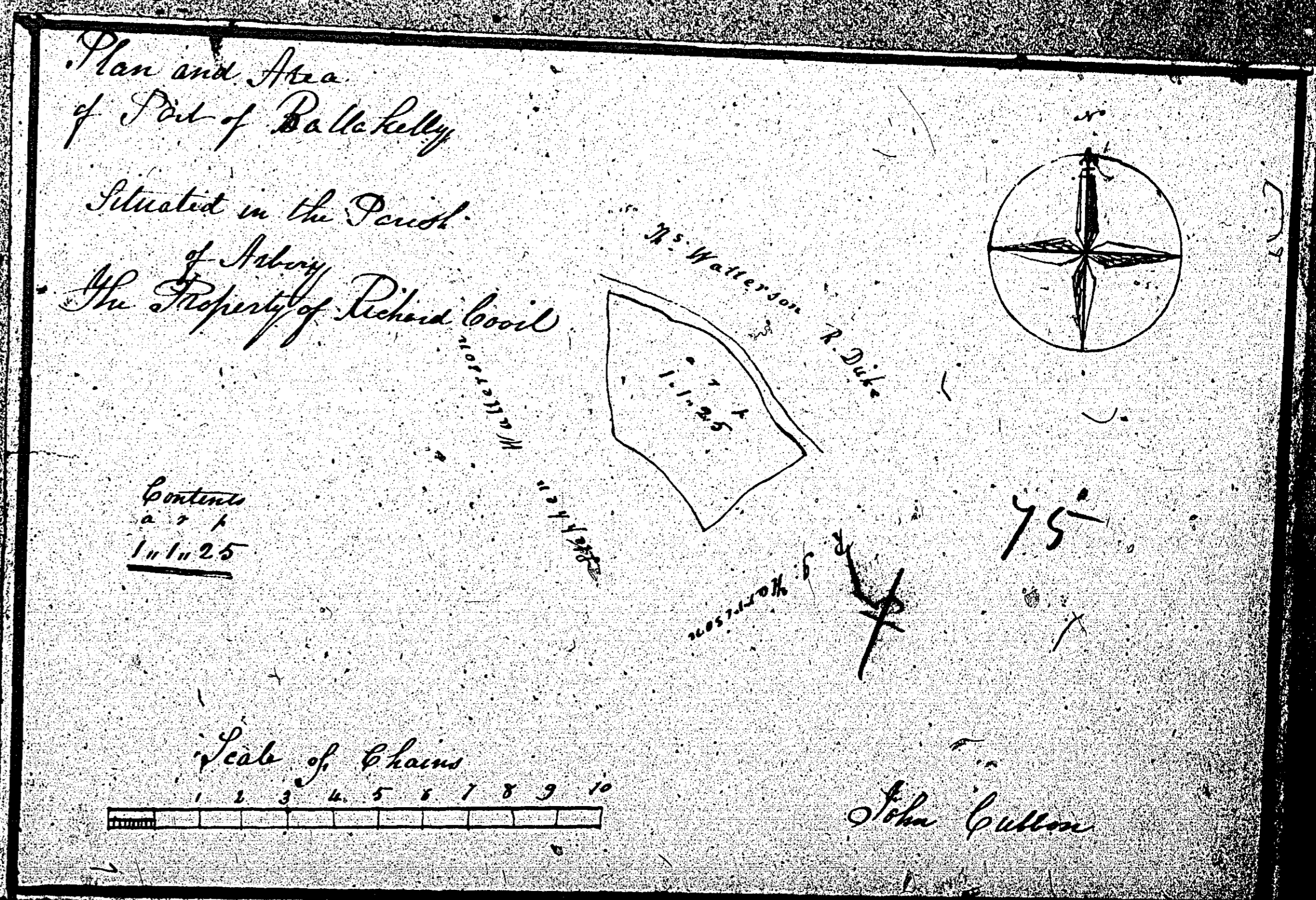
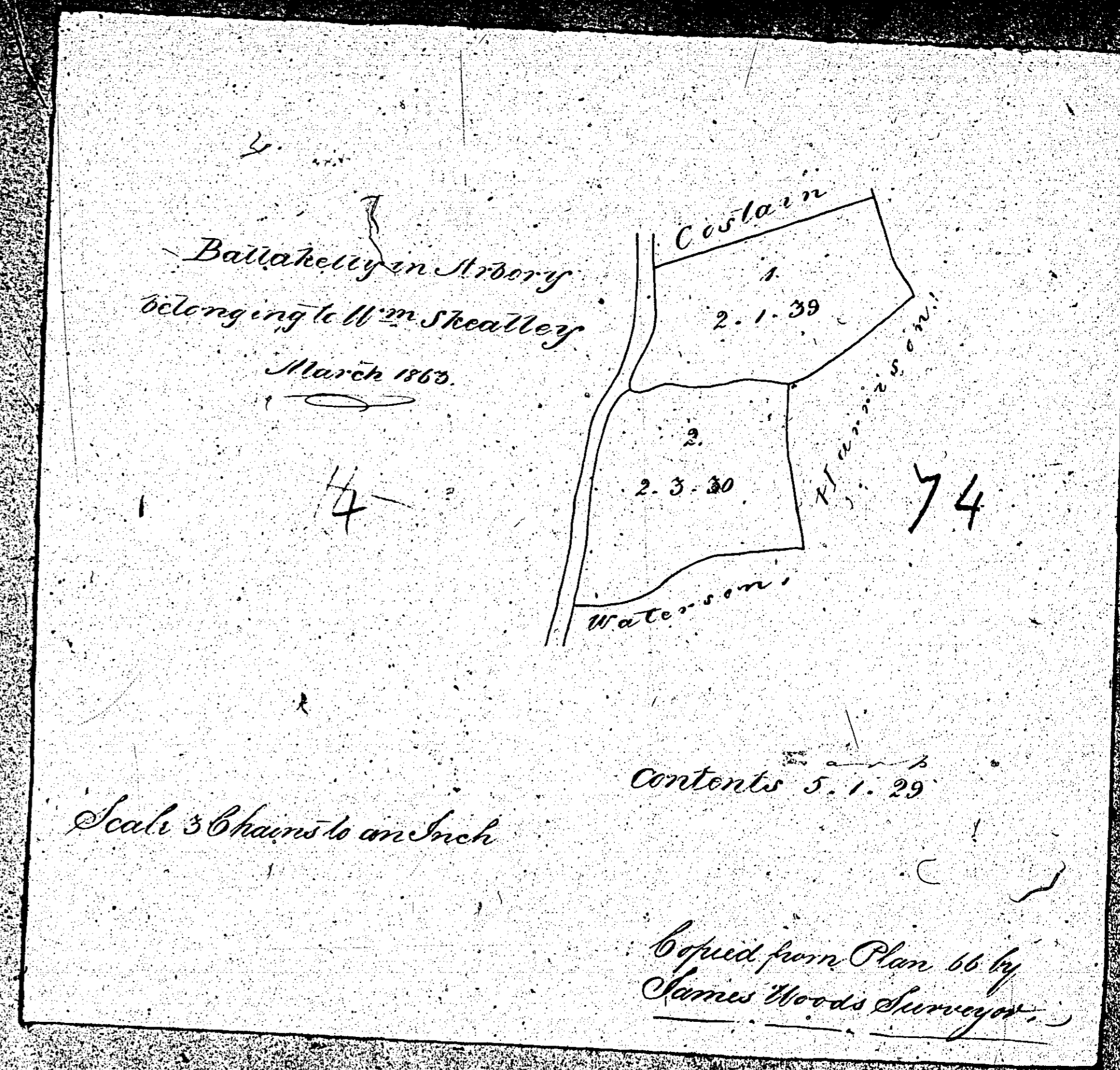


ISLE OF MAN GOVERNMENT: GENERAL REGISTRY

ASYLUM PLANS: PARISH OF ARBORY

Originals monotone

1:23



ISLE OF MAN GOVERNMENT: GENERAL REGISTRY

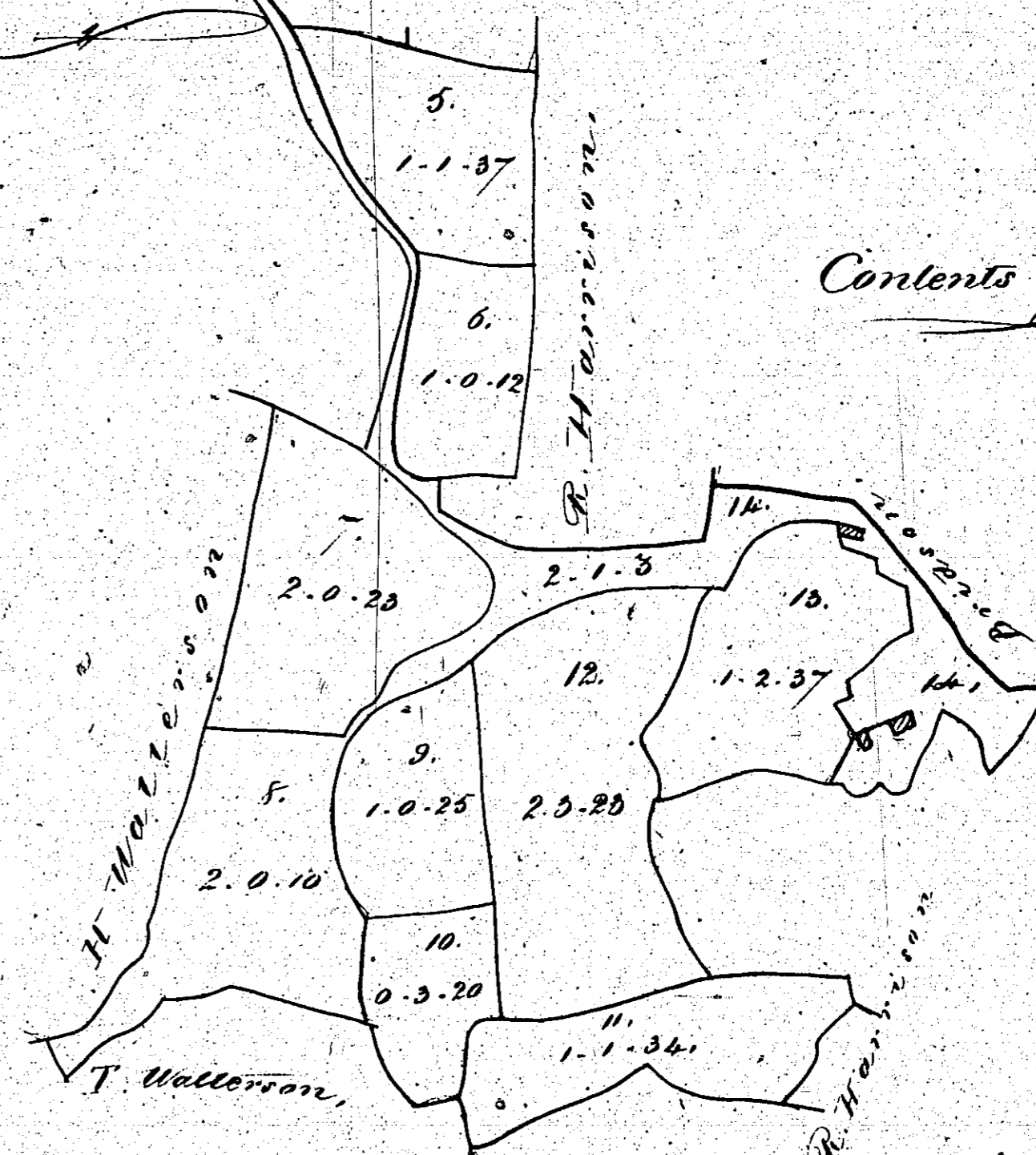
ASYLUM PLANS: PARISH OF ARBORY

Originals monotone

1:23

*Ballakelly in Arbory  
Belonging to R. Duke,*

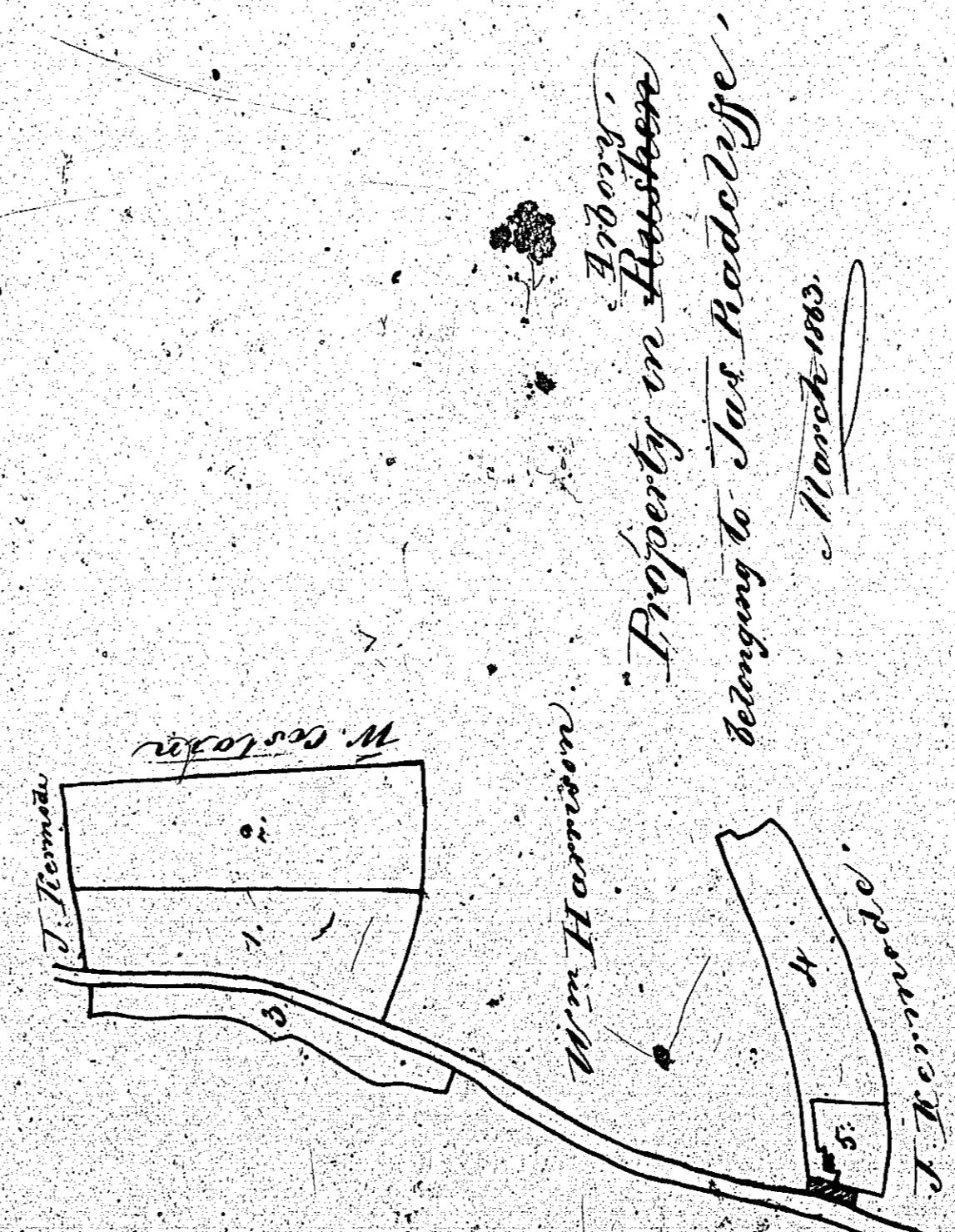
76



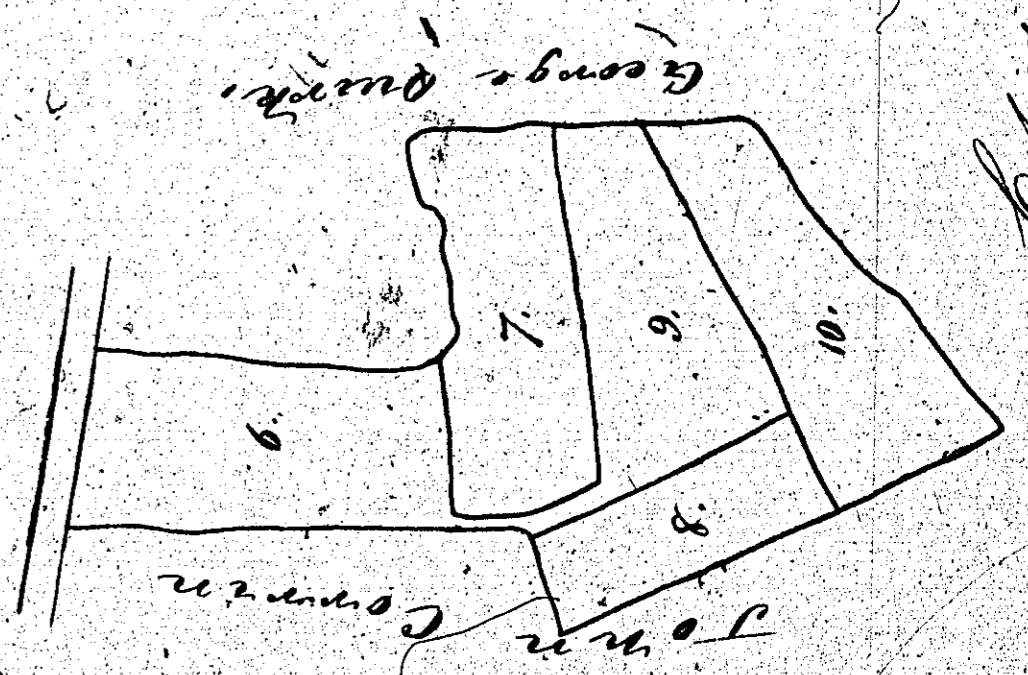
*Contents 17-0-24*

*Scale of 3 Chains*

*Copied from plan 66 by  
W. D. 1863*



77



78

Contents	
No.	Acres
1	4.0.4
2	1.1.24
3	0.1.33
4	0.3.10
5	0.1.5
Dedication	
6	1.9.7
7	1.1.6
8	0.3.6
9	1.1.2
10	1.1.4
Total	
	0.0.25
	10 0.31

*Copied from plan 139 by  
James Woodhouse*

*Shown to be which*

ISLE OF MAN GOVERNMENT: GENERAL REGISTRY

ASYLUM PLANS: PARISH OF ARBORY

- 78 Original coloured
- 79 Original coloured
- 80 Original monotone

1:23

