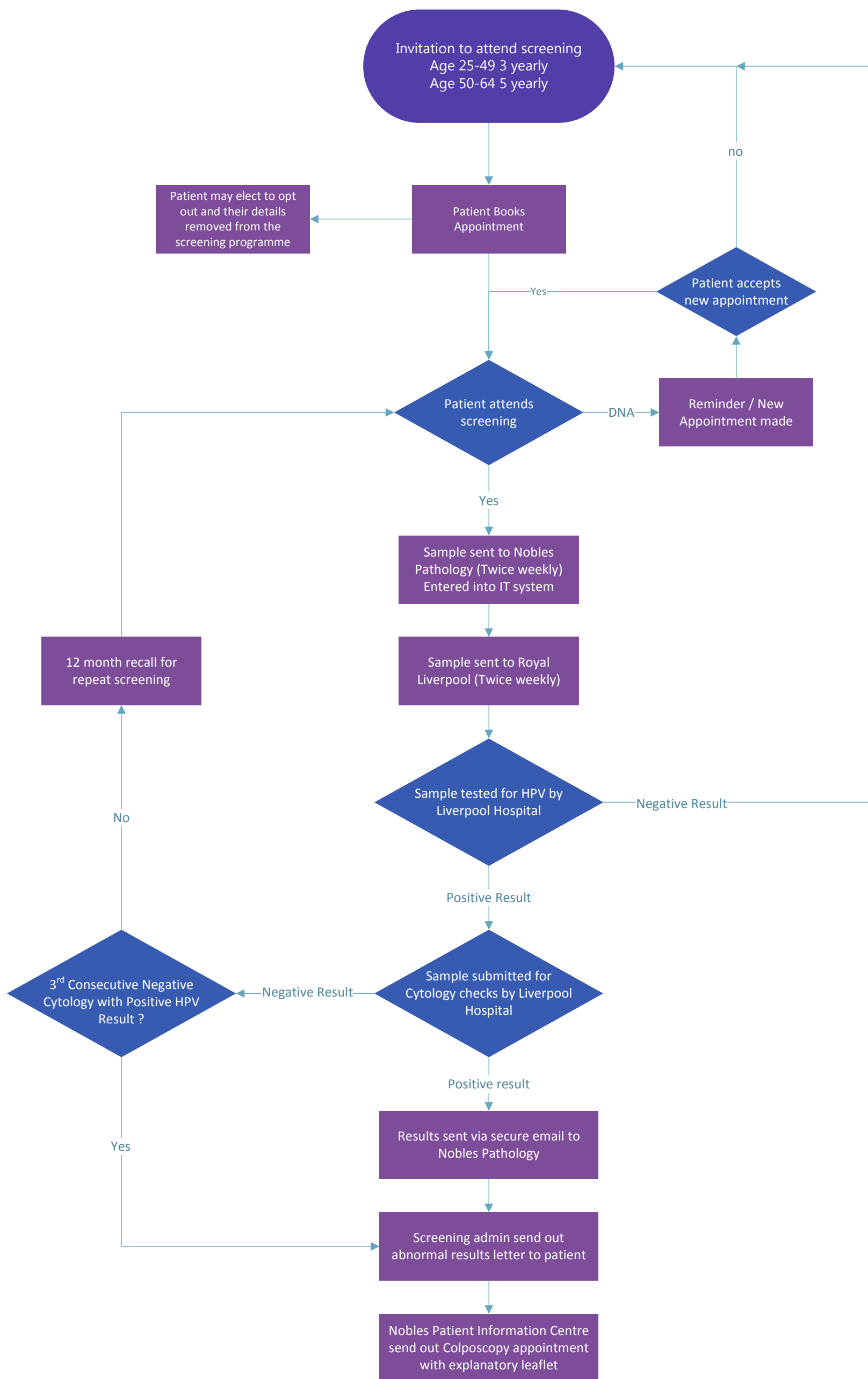


# Primary HPV Screening flowchart



For Call / Recall queries: [cervicalscreening@gov.im](mailto:cervicalscreening@gov.im)

For Pathology queries and to register as a new sample taker: [cervicalscreeners@gov.im](mailto:cervicalscreeners@gov.im)

For more information: [www.gov.im/cervicalscreeners](http://www.gov.im/cervicalscreeners)

For sample takers training module contact eLearn Vannin: [ellearnvanninhelp@gov.im](mailto:ellearnvanninhelp@gov.im)

Created 16/07/2018