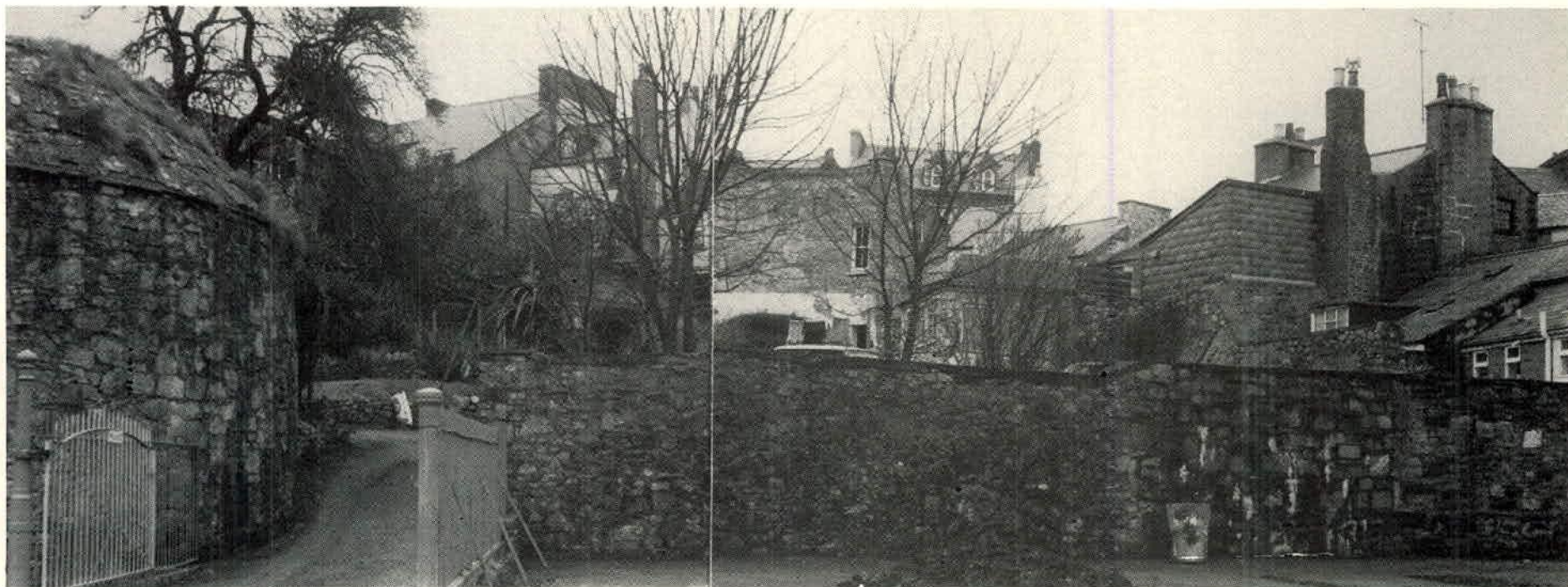
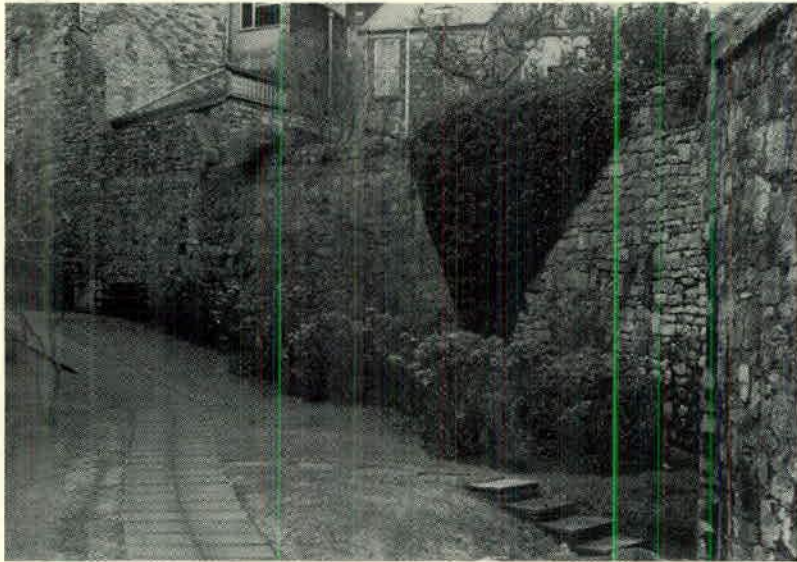




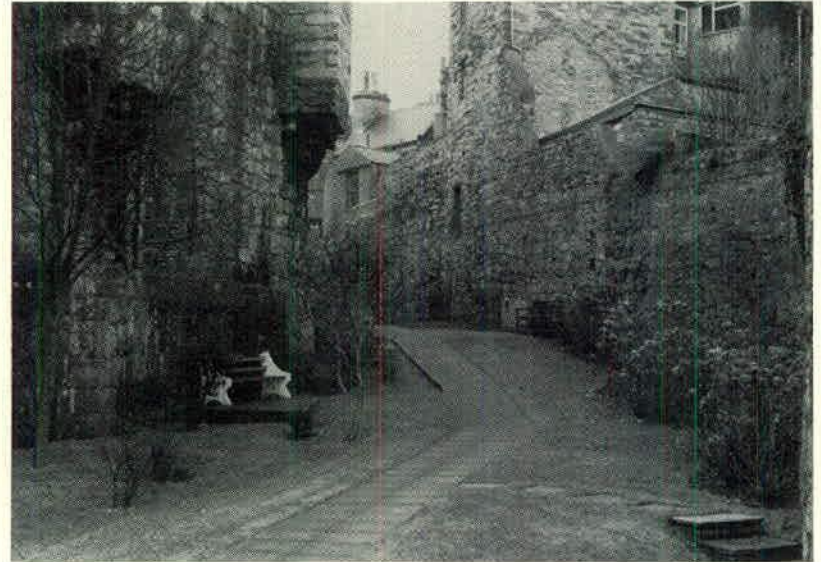
F1

F2



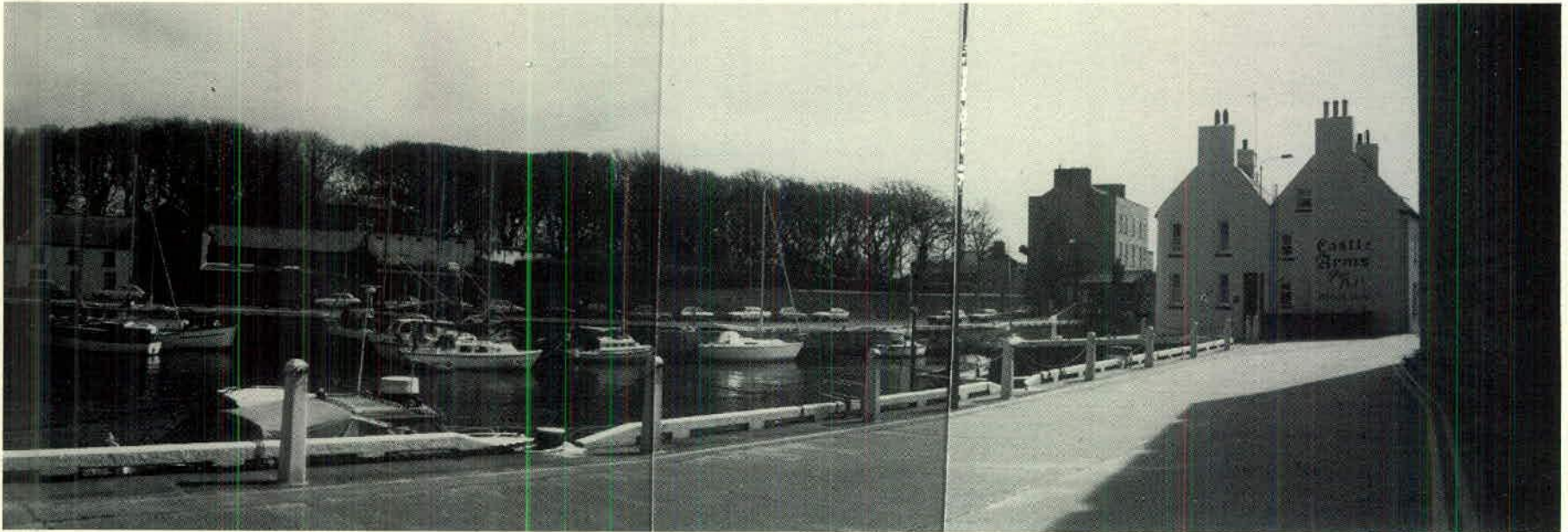


F3



F4

F5

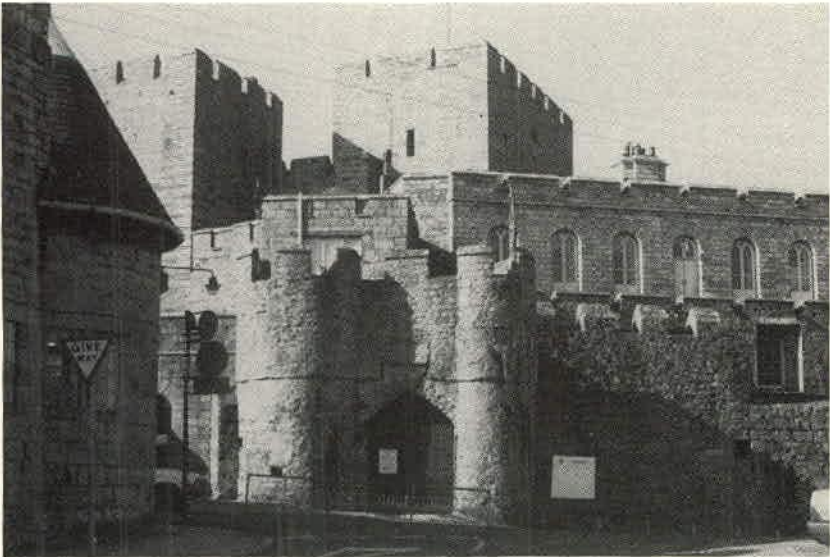




F6



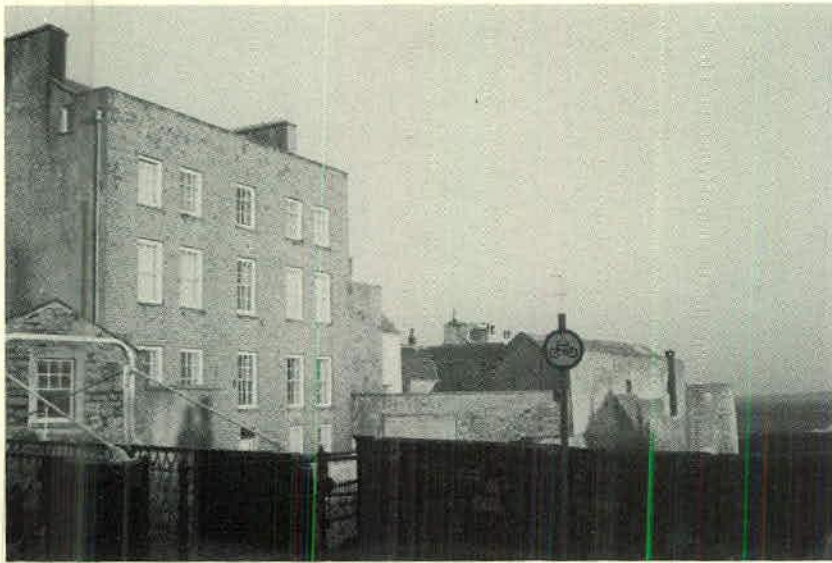
F7



F8



F9



F10



F11



F12



F13



F14



F15



F16



F17



F18



F19



F20

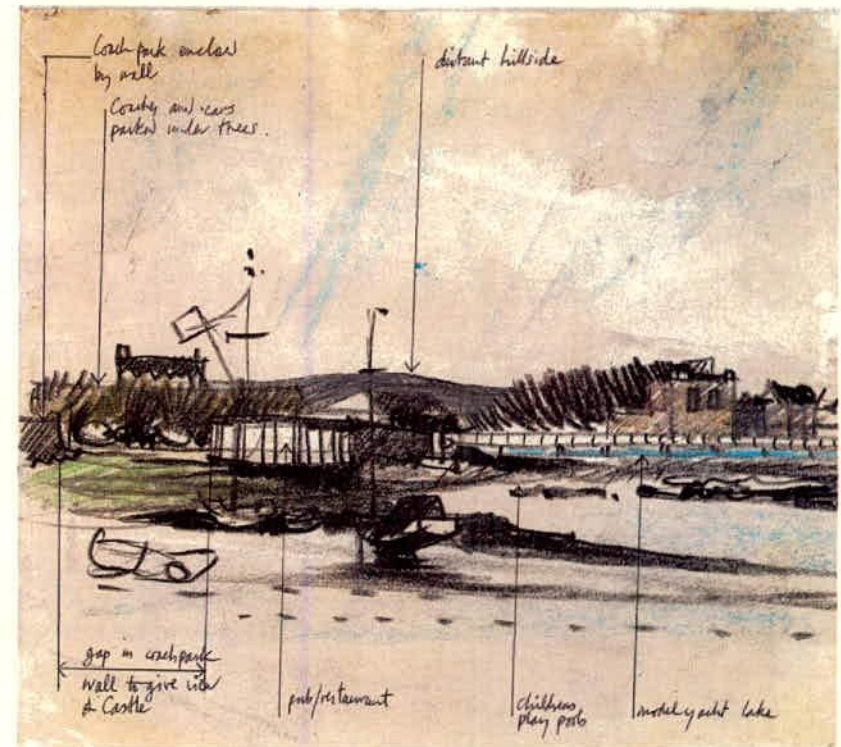


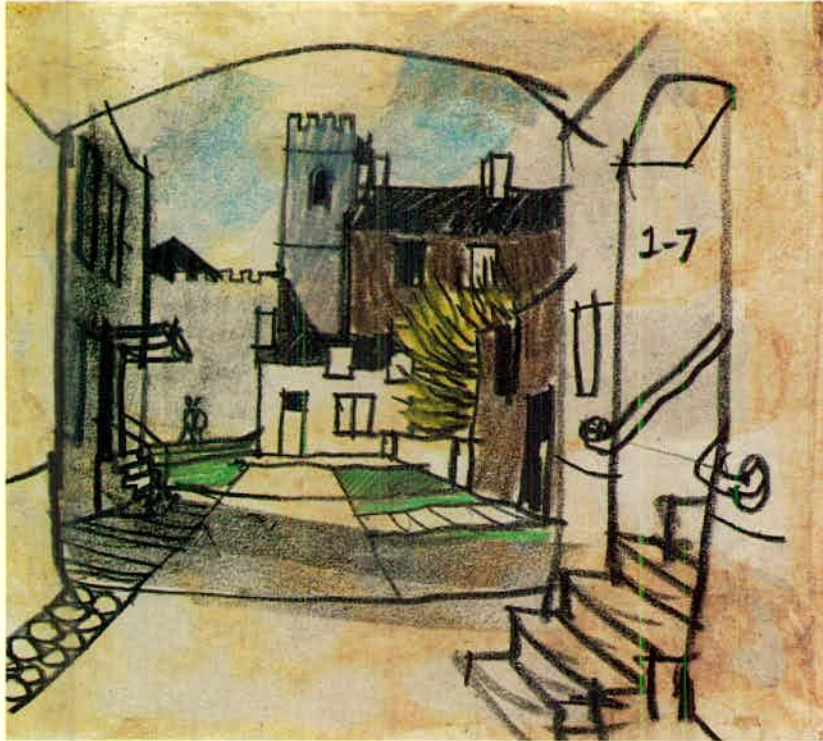
F21



View from coach-park focussed along CHAIN to Castle.

View of proposed coach-park seen from yacht harbour. By means of stone walls, rough planting and trees the expanse is contained and has the same scale as the timber yards behind. Foreshore left rough with gap to command view of Castle on arrival. Pub to right of gap.



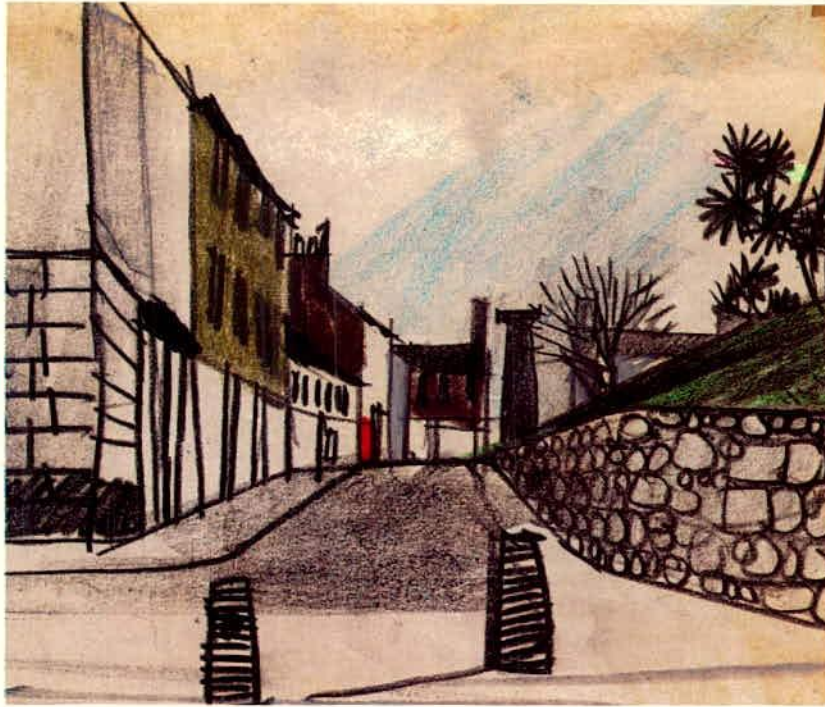


*Proposed new quadrangle of cottages east of St. Mary's Church looking from renovated building behind Parliament Square.*

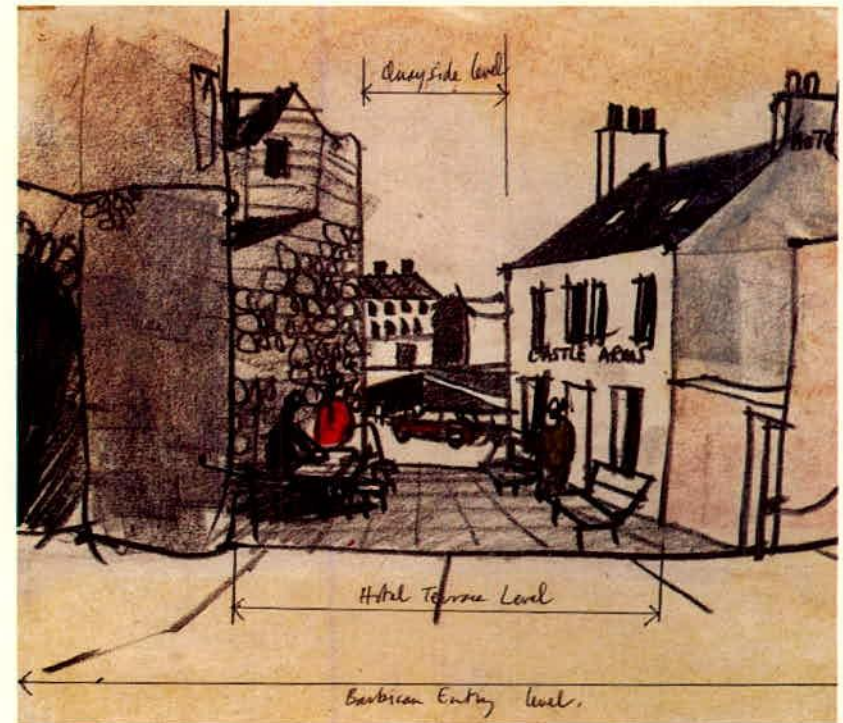


*Proposed new quadrangle of cottages east of St. Mary's Church.*

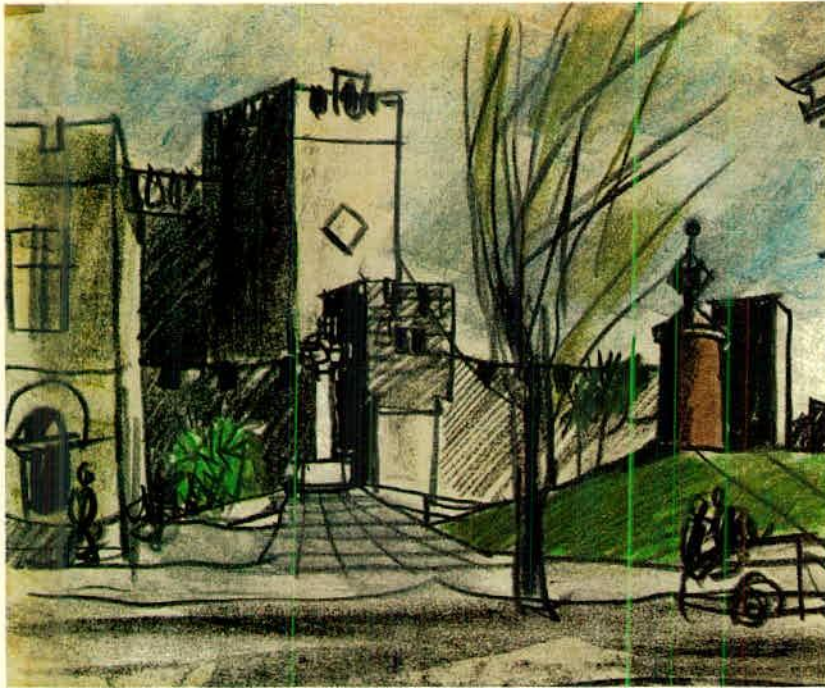




*Glacis retaining wall made horizontal so that grass flows into Parade level at top of Castle Street which remains open to cars.*

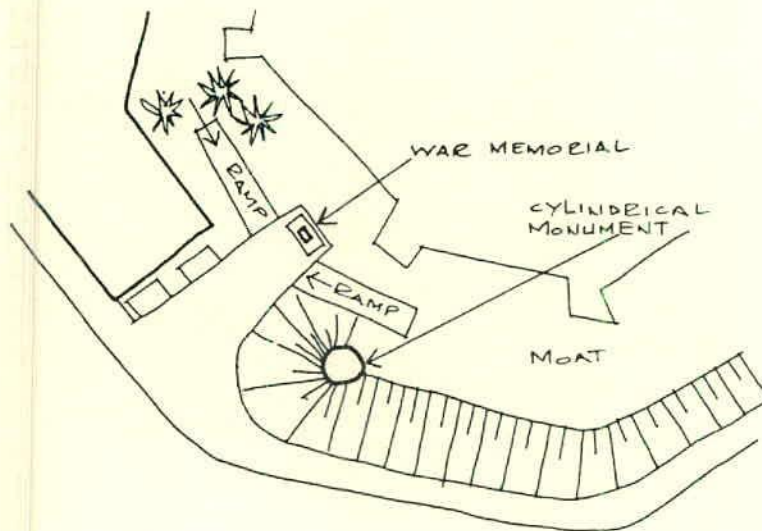


*View looking back from Barbican level to hotel terrace and quay.*



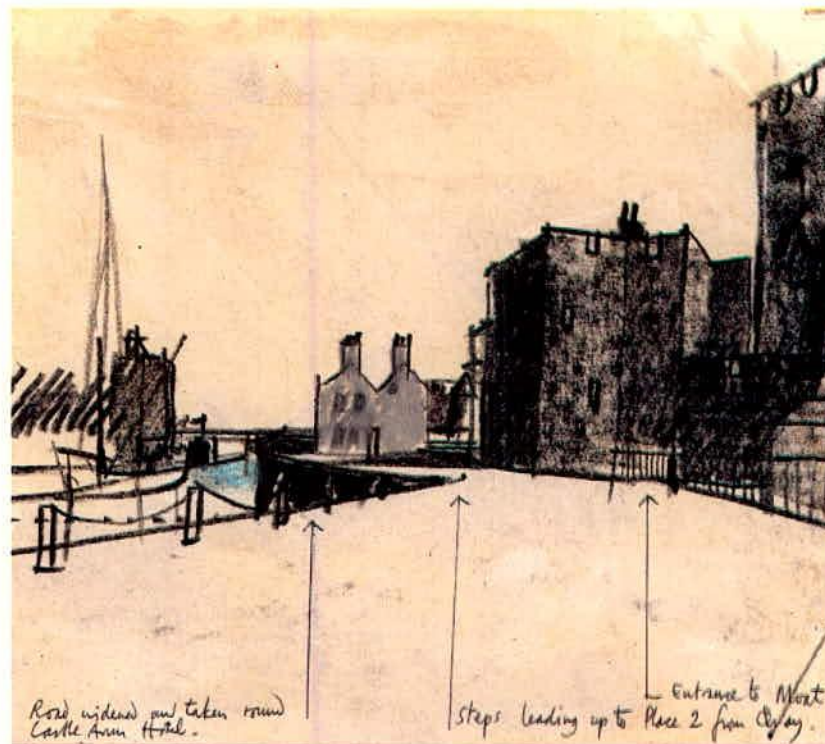
The use of monuments in the explanation of urban situation. The square itself is given its focal point by the centrally sited Doric Column (Photo A10). In this view the climbing ramp of grass which forms the outer layer of the Castle (and which flows into the Square) is epitomised by the cylindrical monument whilst the actual penetration outward to the undertow of the Castle is presided over by the resited War Memorial which stands poised in distant space over the deep moat which is reached by ramps. The simplicity of the situation is explained and not, as heretofore, confused by the positioning of monuments (see F16).

By the removal of clutter, the replacing or resiting of monuments and the flow of planes the true nature of the confrontation of Square and Castle is revealed.





*Hotel terrace contained by Barbican. Fine anticipatory seaward view. Paint turret white?*



*The quay showing road widened and taken round Castle Arms Hotel. Steps lead to hotel terrace whilst most leading up to Parade peels off to the right.*

