



A8

*Entry to Parade at Unions Hotel*



A9

*Parade*

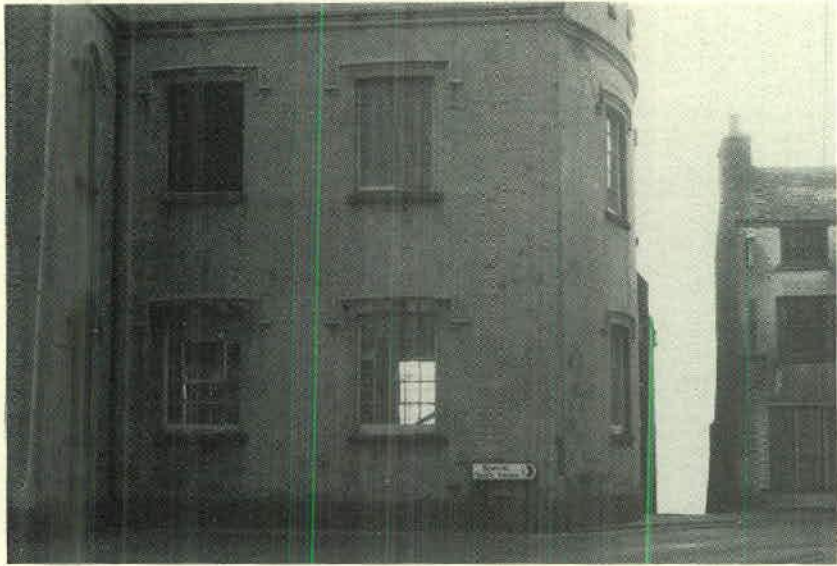
*Parade*



A10

A11





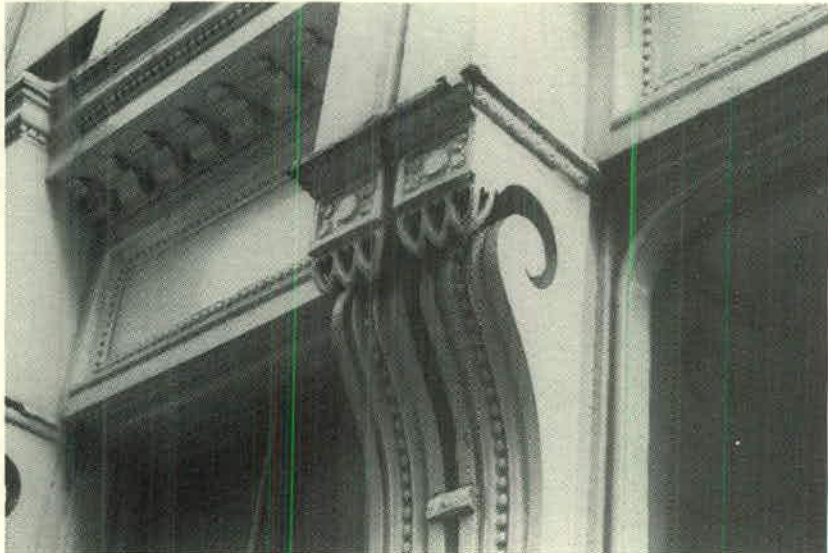
A12



A13

*Aedicule*

*Wave (no longer existing)*



A14



A15



A16



A17

9, Castle Street

*Steeple*



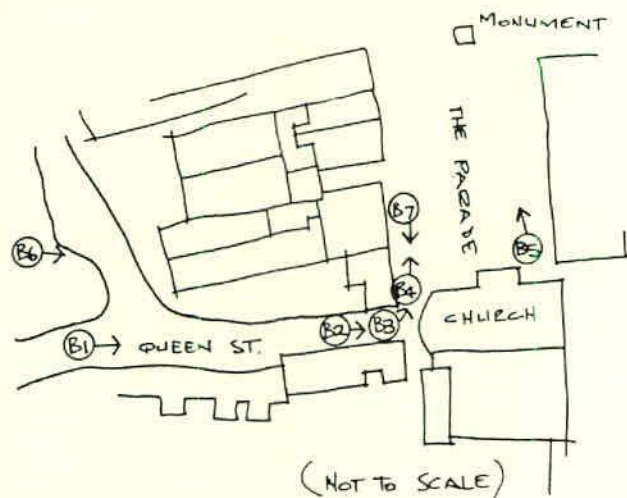
A18

*Bank in Parade*



A19

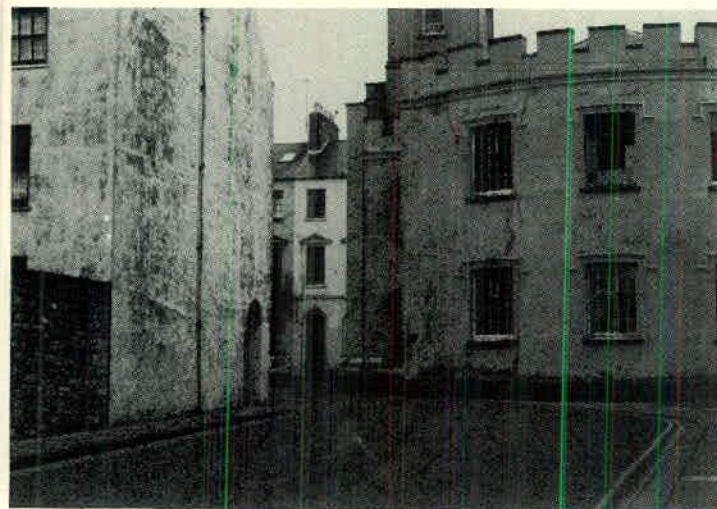
THE APPROACH TO THE TOWN SQUARE FROM THE WEST is via Queen Street, a charming and unspoilt coast road. Fishermen's cottages now in the process of getting the coach-lamp treatment but still very genuine. Springy short turf in gaps overlooking the sea and, fortunately, no sea-



wall. The street is closed by the curved west end of St. Mary's Church which contains the eye until the last moment when the sophisticated square is revealed to the left and the open sea to the right. An excellent approach.



B1



B2



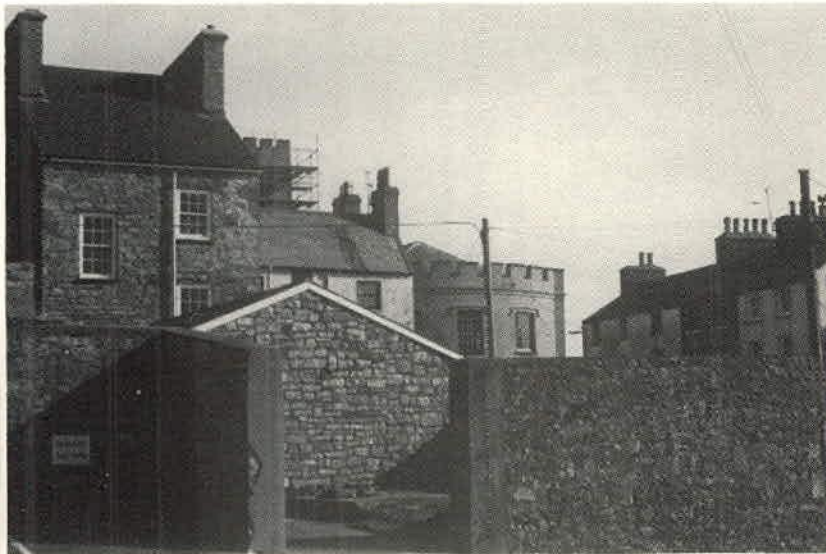
B3



B4



B5

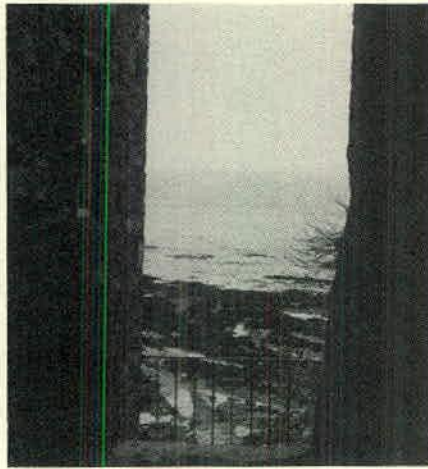


B6



B7

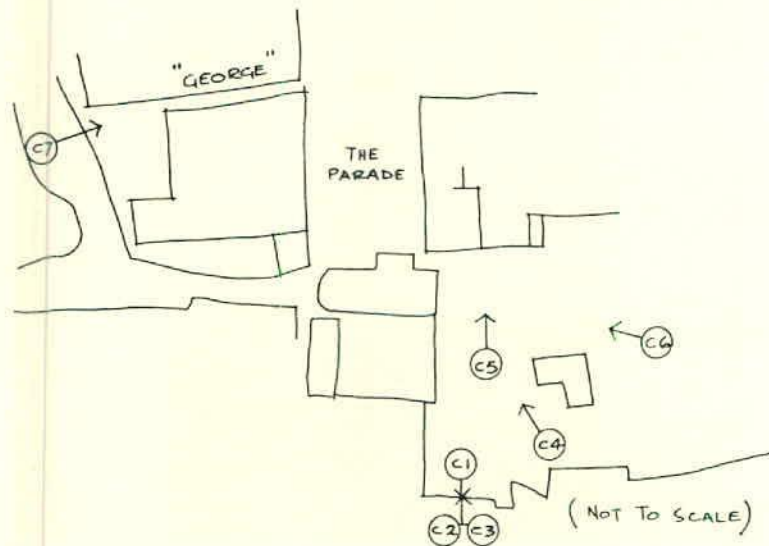
THE SEA FRONT AREA has a quiet and remote character. Ruins and short springy turf inside low walls overlooking the sea. Whitewashed early school stands isolated against the geometry of the back of the Church.



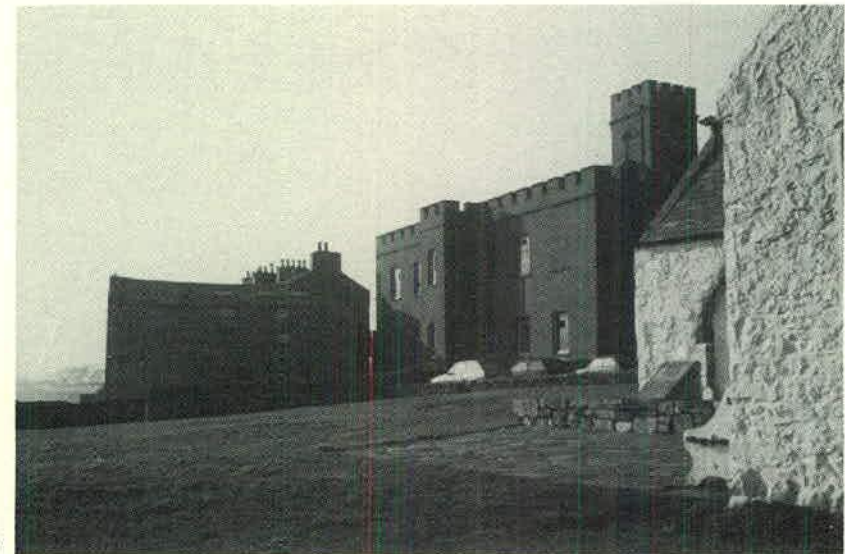
C1

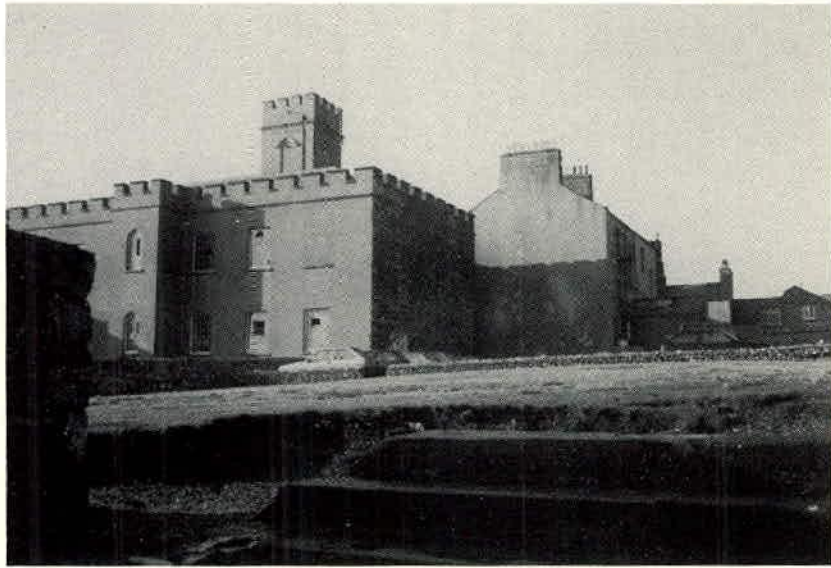


C2



C3





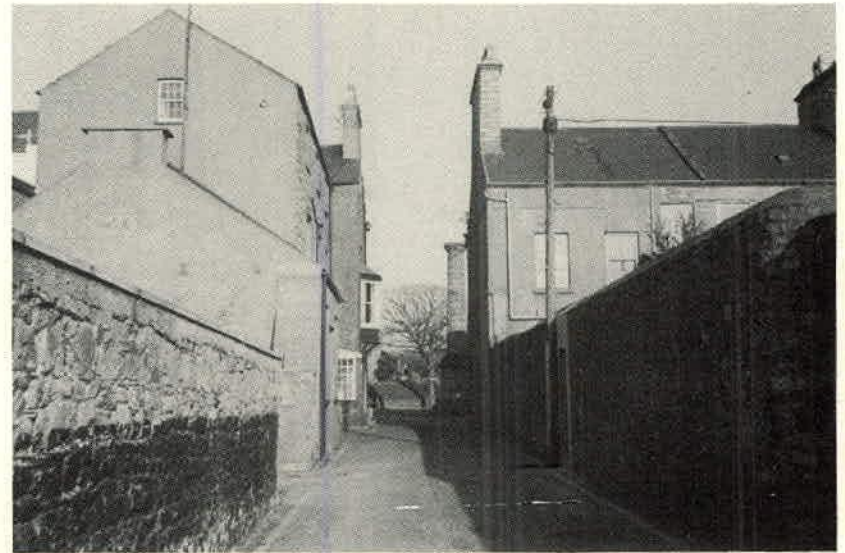
C4



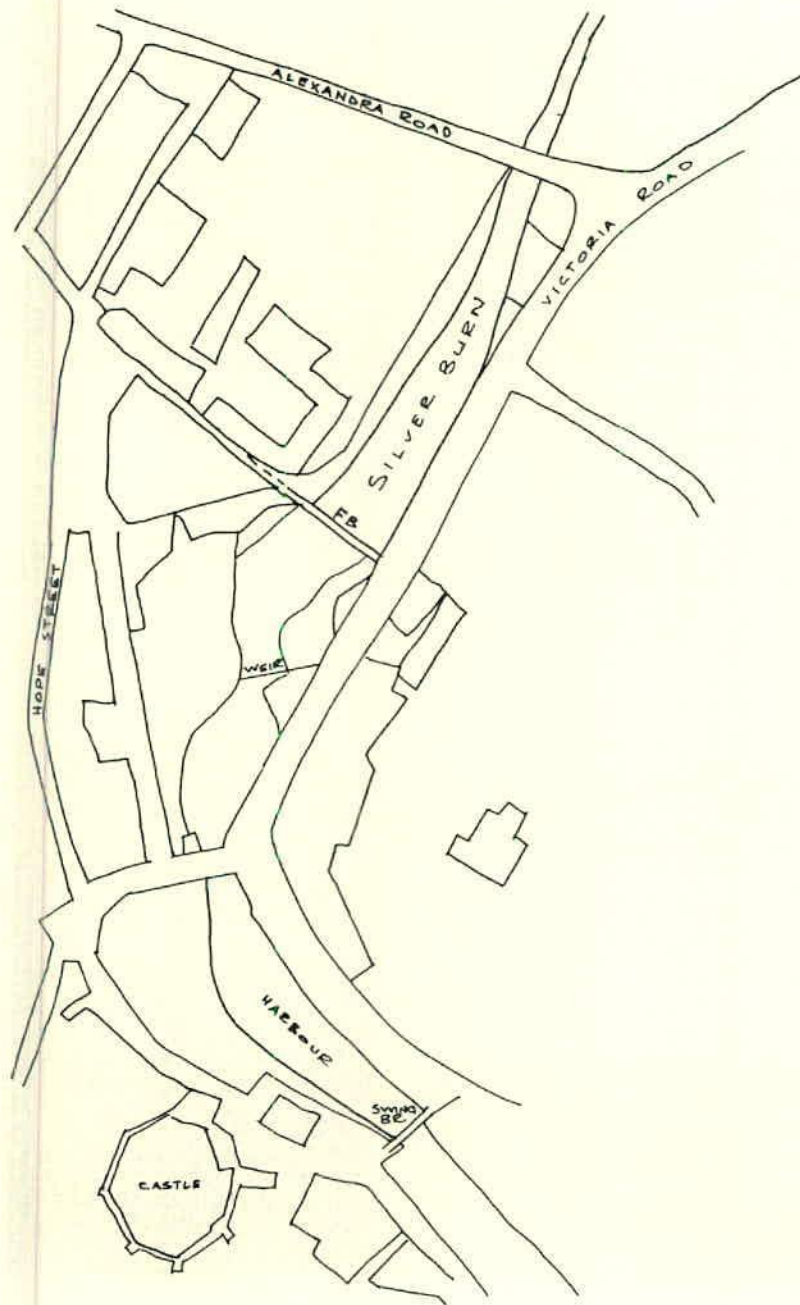
C5



C6



C7



RIVER PENETRATION TO THE CENTRE of the town. This sequence of water spaces is of some significance. The Silver Burn flows under Alexandra Road and forms a broad stretch of water terminating in a weir with footbridge, the river flows into a yacht harbour which is separated from the channel to the sea by a swing bridge. Note that this system of water focuses on to the Castle.



D1