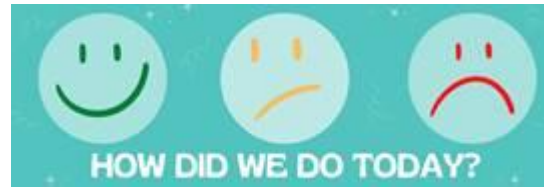


## **IN THE KNOW: Keeping Staff Informed**

**Volume 19 (17) April 2024**

Struggling to access any of the articles in the bulletin today? Some may be available via [Athens](#) (for eligible library members), you can check [using Google Scholar](#). Article not available via Athens or you don't have a login? [Request the article](#) from the library! Not a member yet? You can [join here](#).

Check out our library [website](#) and our [Twitter](#) for details of all our services, facilities and any forthcoming events.



**Do you have feedback about library resources, staff, or spaces? Share it here:** <https://www.surveymonkey.com/r/KDFeedback>

### **In this issue:**

**IN THE SPOTLIGHT**

**MANX SKEET**

**STAFF HEALTH & WELLBEING**

**HOT OFF THE PRESS**

**PUBLIC HEALTH**

**EVIDENCE BASED PRACTICE**

**SOCIAL AND COMMUNITY CARE**

**HEALTH MANAGEMENT**

**PATIENT INFORMATION**

**LIBRARY BITS AND PIECES**

## IN THE SPOTLIGHT

[Charity calls for action on asthma to prevent needless deaths](#)

[Over half of world's population could be at risk of mosquito-borne diseases, experts warn](#)

['Unsustainable': UK predicted to see 50% spike in strokes by 2035](#)

## STAFF HEALTH & WELLBEING

[Wearable technology assesses surgeons' posture during surgery](#)

[Perceptions of lecturers and students regarding discriminatory experiences and sexual harassment in academic medicine – results from a faculty-wide quantitative study](#)

[Moderate Exercise Linked to Lower Depression Risk](#)

[Exercising between 6 p.m. and midnight may be more beneficial for people with obesity](#)

[A top NASM trainer recommends beginners do these three moves to build full-body strength efficiently](#)

[5 recipes that are planet-friendlier](#)

[Ciabatta recipes](#)

[Pre-work warmup](#)

## Useful links

[Patient.co.uk](#)

[NHS Website](#)

[Mental Health Foundation](#)

[World Health Organisation](#)



## MANX SKEET

[Lack of opportunity to study science 'could be impacting future doctors'](#)

[Glen Maye patient airlifted to the UK](#)

[Minister to be questioned on cigarette age restrictions](#)

[Hopes new unit will reduce amount of time patients spend in hospital](#)

[Blood transfusion figures revealed](#)

[Sex education details sent to parents this week](#)

[Health Minister says work is 'underway' on access road to The Roundhouse](#)

[Public sector housing thresholds need changing, says MHK](#)

[Improving women's health services a 'joint effort'](#)

[Calls for Sarah's Law on Isle of Man](#)

[Review of income thresholds for public sector housing](#)

[A step into the modern era for social security](#)

[Island to follow UK cigarette sale ban?](#)

## HOT OFF THE PRESS - BBC News

[Letby to seek permission for conviction appeal](#)

[Deadly nitazene drug adverts on X and SoundCloud](#)

[Why are we so ill? The working-age health crisis](#)

[What do GPs think of Sunak's sick note plans?](#)

[Post office scandal helped infected blood campaign](#)

[Ketamine addict: 'I can't walk 50m without weeing'](#)

[Almost a quarter of kids aged 5-7 have smartphones](#)

[Children used as 'guinea pigs' in clinical trials](#)

[NHS weight management service offered to under fours](#)

[Gender care review author attacks 'misinformation'](#)

[Smear tests of 3,000 women to be reviewed](#)

[England tops chart for child alcohol use - report](#)

[Calls to help with donations of 'miracle' plasma](#)

[Action needed on needless asthma deaths, says charity](#)

[PM's dementia adviser quits over benefits clawback](#)

['Covid Inquiry needs to hear from people like me'](#)

[Cigarette prices motivating more to give up - study](#)

[Chat room helps Destiny-Rae, 5, find a new kidney](#)

[First mRNA skin-cancer vaccine starts UK trial](#)

### Useful Health Links

[NHS Website: A-Z of health conditions](#)

[NHS Website](#)

[Check NHS standards near you](#)

[Cancer Help UK](#)

[British Heart Foundation](#)

[Health and Care Professions Council](#)

[Mental Health Foundation](#)

[General Medical Council](#)

[Nursing and Midwifery Council](#)

[Care Quality Commission](#)

[NICE](#)

[NHS Scotland](#)

[Health in Wales](#)

[NI Direct](#)

[Clinical trials information](#)

[Diabetes UK](#)

[British Lung Foundation](#)

[National Obesity Forum](#)

## Critical Thinking

Do you believe everything you read? Is there truth behind the headlines? Why does false information spread so fast on social media? What can you do to make sure you don't get taken in? Start by looking up the stories on websites such as the ones below:

[BBC Reality Check](#)

[Full fact](#)

[Ferret Fact Service](#)

[British Heart Foundation – Behind the headlines](#)

## Misinformation

Do you keep a look out for misinformation circulating online? Do you know the impact it could have on patients? How do you counter it?

[The Lancet on LinkedIn: "Misinformation is not a new phenomenon – far from it..."](#)

[How does misinformation and disinformation online affect our health?](#)

[Obstetricians are debunking women's health misinformation with a dose of humour on TikTok](#)

[Alarm sounded on 'deep fake' health misinformation](#)

[Social histories of public health misinformation and infodemics: case studies of four pandemics](#)

[Long COVID and SARS-CoV-2 persistence: new answers, more questions](#)

## Bulletins

**(click to open)**

[Bulletin for clinical commissioning groups \(CCGs\)](#)

[Chief Nursing Bulletin](#)

[Healthcare Science Bulletin](#)

[Compassion in Practice strategy and 6Cs Live!](#)

[Liaison and Diversion Bulletin](#)

[Pharmacy and Medicines Bulletin](#)

[Primary Care Bulletin](#)

[Specialised Commissioning Stakeholder Bulletin](#)

[Revalidation Matters](#)

[Liaison and Diversion Bulletin](#)

[Specialised Commissioning Stakeholder Bulletin](#)



## **PUBLIC HEALTH**

### **Health e-News Bulletin/NLH Public Health Newsletter**

#### **Adult Protection & Safeguarding Domestic Violence**

[Experiences of physical and emotional intimate partner violence during the COVID-19 pandemic: a comparison of prepandemic and pandemic data in a longitudinal study of Australian mothers](#)

[Patient Abuse, Neglect, and Exploitation: Why Physicians Need to Be Trauma-Informed](#)

[Socioeconomic status as a factor of male domestic violence: adaptations due to paternity uncertainty theory](#)

#### **Addiction**

[Associations between child maltreatment and hospital admissions for alcohol and other substance use-related disorders up to 40 years of age: Results from the Childhood Adversity and Lifetime Morbidity study](#)

[Vaping in pregnancy: Caution required!](#)



## Allergies

[A survey of severe asthma in Canada: results from the CASCADE practice reflective program](#)

[Inhibition of RNase 7 by RNase inhibitor promotes inflammation and Staphylococcus aureus growth: Implications for atopic dermatitis](#)



## Cardiovascular Disease

[Self-expanding valves more beneficial than balloon-expandable valves in patients with a small aortic annulus](#)

[Gut bacteria can break down cholesterol](#)

[Proarrhythmic major adverse cardiac events with donepezil: A systematic review with meta-analysis](#)

[Is Diltiazem Safe in Patients with AF Taking Apixaban or Rivaroxaban?](#)

[Heart pump increases survival in STEMI-related cardiogenic shock](#)



## **Complementary Medicine/Alternative Medicine**

[The clinical effect of an electric massage chair on chemotherapy-induced nausea and vomiting in cancer patients: randomized phase II cross-over trial](#)

[Evidence on the inhibitory effect of Brassica plants against Acinetobacter baumannii lipases: phytochemical analysis, in vitro, and molecular docking studies](#)

[Self-administered acupressure for probable knee osteoarthritis in middle-aged and older adults](#)

[Use of bone landmarks for assessing the safety of acupuncture on the posterior midline of the neck region](#)

[Raspberry leaf \(Rubus idaeus\) use in pregnancy: a prospective observational study](#)

## **Critical/Emergency Care**

[A retrospective audit of adult and paediatric anaphylaxis management from two Australian metropolitan mixed emergency departments](#)

[An important issue of burnout among pre-hospital emergency medical personnel in Chengdu: a cross-sectional study](#)

[Programme theories to describe how different general practitioner service models work in different contexts in or alongside emergency departments \(GP-ED\): realist evaluation](#)

## **Dementia**

[Suboptimal self-reported sleep efficiency and duration are associated with faster accumulation of brain amyloid beta in cognitively unimpaired older adults](#)

[Distinct patterns of voxel-and connection-based white matter hyperintensity distribution and associated factors in early-onset and late-onset Alzheimer's disease](#)



## **Dental**



[Effect of converting from propofol to remimazolam with flumazenil reversal on recovery from anesthesia in outpatients with mental disabilities: a randomized controlled trial](#)

[Orthodontists' use of remote monitoring platforms pre-, amid, and post-COVID-19: a survey study](#)

[Oral mouthwashes for asymptomatic to mildly symptomatic adults with COVID-19 and salivary viral load: a randomized, placebo-controlled, open-label clinical trial](#)

## **Diabetes**

[Shoe technology reduces risk of diabetic foot ulcers](#)

[Siblings with unique genetic mutation help scientists progress drug search for type 1 diabetes](#)

[Newer Pharmacologic Treatments in Adults With Type 2 Diabetes: A Systematic Review and Network Meta-analysis for the American College of Physicians](#)

[Impact of empagliflozin on insulin needs in patients with heart failure and diabetes: An EMPEROR-Pooled analysis](#)



## **Diet, Nutrition and Obesity**

[Self-administered acupressure for probable knee osteoarthritis in middle-aged and older adults](#)

[Research explores how a father's diet could shape the health of his offspring](#)

[Social media can be used to increase fruit and vegetable intake in young people](#)

[Missed diagnosis—a major barrier to patient access to obesity healthcare in the primary care setting](#)

[3 in 5 parents play short order cook for young children who don't like family meal](#)



## **Digital Health Technology**

[Digital identity crucial for security and enabling transformation says Kelly](#)

[How hospitals can use their wi-fi and bedside infrastructure to turbocharge innovation](#)

[Virtual wards: We are in danger of being eclipsed by our European neighbours](#)



## **End of Life/Palliative Care**

[Continuous palliative sedation until death: a qualitative study of palliative care clinicians' experiences](#)

[Perspectives from patients with chronic lung disease on a telehealth-facilitated integrated palliative care model: a qualitative content analysis study](#)

[Chinese and Belgian pediatricians' perspectives toward pediatric palliative care: an online survey](#)



## **Immunisation and Infection**

[Study shows more than half of global infectious diseases experts surveyed rate influenza as the number one pathogen of concern of pandemic potential](#)

[Metabolic health before vaccination determines effectiveness of anti-flu response](#)

[Is detergent-only cleaning paired with chlorine disinfection the best approach for cleaning](#)

[Prevention of legionella infections from toilet flushing cisterns](#)

[Burdens of infection control on healthcare workers: a scoping review](#)

## **Inclusion and Diversity**

[Effect and outcome of equity, diversity and inclusion programs in healthcare institutions: a systematic review protocol](#)

## **Learning Disability**

[Stress, anxiety & depression among teenage students with specific learning disability: cross sectional study](#)

[Understanding dyslexia guidance for parents and teachers: A review of states' handbooks](#)

[Improving the Reading Skills of a Third-Grade Primary School Student with Specific Learning Disability](#)

['I get overwhelmed by the noises and crowds of school'](#)

## **Medical Education**

[The feedback dilemma in medical education: insights from medical residents' perspectives](#)

[Collaborative virtual reality environment in disaster medicine: moving from single player to multiple learners](#)

[Exploring the use of ChatGPT to analyze student course evaluation comments](#)

[Integrating training in evidence-based medicine and shared decision-making: a qualitative study of junior doctors and consultants](#)

[Occupational balance and associated factors among students during higher education within healthcare and social work in Sweden: a multicentre repeated cross-sectional study](#)

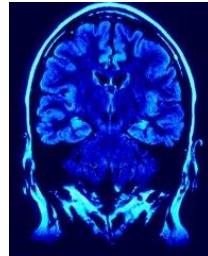
## **Mental Health**



[Unregulated social media as a toxin: New York City's public health action](#)

[Prevalence of multimorbidity in people with and without severe mental illness: a systematic review and meta-analysis](#)

[Absence of funding for pharmacotherapy for adults with ADHD in Poland](#)



## **Neurology**

[A new therapeutic target for traumatic brain injury](#)

[Migraine: Myths and Facts](#)

[Computer-aided cognitive training combined with tDCS can improve post-stroke cognitive impairment and cerebral vasomotor function: a randomized controlled trial](#)

[Alcohol consumption may be a risk factor for cerebrovascular stenosis in acute ischemic stroke and transient ischemic attack](#)

## **Obstetrics and Gynaecology**

[Child Protection System Removal and Short-Interval Births Among Individuals With Prenatal Substance Use](#)

[Association of Adverse Childhood Experiences and Resilience With Depression and Anxiety During Pregnancy](#)

[Treatment strategies for pelvic organ prolapse and postoperative outcomes in older women with long-term care needs: A population-based retrospective cohort study](#)

[The association between vulvodynia and interstitial cystitis/bladder pain syndrome: A systematic review](#)

[Comparative study of second-line labor induction methods in patients with unfavorable cervix after first-line low-dose oral misoprostol](#)



## **Oncology**

[Gene therapy is halting cancer. Can it work against brain tumors?](#)

[Considerations in Meta-Analysis of Immunotherapy for Advanced Cancers Other Than Melanoma](#)

[Proposed bill to support assisted dying in France](#)

[Quality watch: Is cancer diagnosis veering off course?](#)

[Investigating immune cells across time in vivo](#)

## **Ophthalmology**

[Leukocoria Due to Persistent Hyperplastic Primary Vitreous](#)

[Bilateral Eyelid Polyposis Due to Eccrine Hidrocystoma](#)

[Effect of intravitreal injections due to neovascular age-related macular degeneration on retinal nerve fiber layer thickness and minimum rim width: a cross sectional study](#)

[Repeatability assessment of anterior segment measurements in myopic patients using an anterior segment OCT with placido corneal topography and agreement with a swept-source OCT](#)

[Extended depth of focus IOL in eyes with different axial myopia and targeted refraction](#)



## **Paediatrics**

[Barriers and facilitators to using ophthalmic clinical health services following school vision screening: a mixed-methods study](#)

[Comparison of singleton and twin birth weight reference percentile curves by gestational age and sex in extremely preterm infants: a population-based study](#)

[Childrens cognition and attitudes during long-term cancer treatment: an ethnographic study](#)

## **Pain Medicine**

[Laparoscopic Obturator Hernia Repair with Self-Gripping Mesh: Case Series in a Single Institution](#)

[Menstrual Methodologies: On Menstrual Pain and the Importance of Ungendering Bleeding](#)

[Harnessing Hope in Managing Chronic Pain: A Guide to Therapeutic Rehabilitation](#)

[Use of hemp extracts rich in THC and CBD in the chronic pain management](#)

## **Patient Experience**

[Patients' Experiences With Digitalization in the Health Care System: Qualitative Interview Study](#)

[Patient experiences using public and private insurance coverage for abortion in Illinois: Implementation successes and remaining gaps](#)

[Patients' experiences with shared decision-making in home-based palliative care – navigation through major life decisions](#)

## **Pharmacology**



[Ozempic Not Linked with Suicidal Thoughts Finds EMA](#)

[Effect of Isocaloric, Time-Restricted Eating on Body Weight in Adults With Obesity: A Randomized Controlled Trial](#)

[Fenfluramine for treating seizures associated with Lennox–Gastaut syndrome in people 2 years and over – final draft guidance](#)

[Setmelanotide for treating obesity and hyperphagia in Bardet-Biedl syndrome – final draft guidance](#)

[Company presents 48-week data from open-label extension of Phase II study of frexalimab in multiple sclerosis](#)

[Switching between mesalazine oral tablet preparations](#)



## Primary Care

[RCGP to launch consultation on PAs in general practice](#)

[GMC case in focus: How GPs should supervise PAs](#)

[How we are trying to ensure strong general practice in Denmark](#)



## Seniors and Aging

[Cancer is a disease of aging, but studies of older adults sorely lacking, review suggests](#)

[Research highlights role of faith spaces in supporting healthy aging](#)

[Trials reveal that internet-based conversations help sustain brain function in older adults](#)

[Scientists explore the coupling between health span and lifespan in Caenorhabditis](#)



## **Sexual Health**

["I wouldn't have felt so alone": The sexual health education experiences of transgender and gender diverse youth living in the southeastern United States](#)

[Sexually transmitted infections: Prevalence and clinical outcomes among pregnant women in Western Sydney](#)

## **Sleep Medicine**

[Diagnosis of sleep disorders in child healthcare settings](#)

[Benefits of napping habits in healthy adults: maintaining alerting performance and cortisol levels change within 90 minutes of habitual napping time](#)

[Subjective sleep more predictive of global cognitive function than objective sleep in older adults: A specification curve analysis](#)

[Follow-up of Telehealth Parent Training for Sleep Disturbances in Young Children with Autism Spectrum Disorder](#)



## **Sports Medicine/Fitness**

[First, do no harm: a call to action to improve the evaluation of harms in clinical exercise research](#)

[Alternative models to support weight loss in chronic musculoskeletal conditions: effectiveness of a physiotherapist-delivered intensive diet programme for knee osteoarthritis, the POWER randomised controlled trial](#)

## **Surgery**

### [Practical Guide to Surgical Simulation Research](#)

[The impact of permanent pacemaker implantation on long-term survival following cardiac surgery; A systematic review and meta-analysis](#)

[Delaying anterior cruciate ligament reconstruction for more than 3 or 6 months results in lower risk of revision surgery](#)

[Older females have increased mortality after trauma as compared with younger females and males, associated with increased fibrinolysis](#)

## **Vaping/Smoking**



[Pregnant smokers can be encouraged to switch to vaping](#)

[Genetic correlation and causal associations between psychiatric disorders and lung cancer risk](#)

[Comparing acceptance of smoking cessation and smoke-free home intervention offers and associated factors among people with low income in the USA: baseline results of a randomised controlled trial](#)

## **World Health Organisation**

[WHO prequalifies new oral simplified vaccine for cholera](#)

[WHO reports widespread overuse of antibiotics in patients hospitalized with COVID-19](#)

[Leading health agencies outline updated terminology for pathogens that transmit through the air](#)

[WHO and France convene high-level meeting to defeat meningitis](#)

[Global immunization efforts have saved at least 154 million lives over the past 50 years](#)

[Spain's Secretary of State for Health discusses health priorities with WHO](#)

## **Wound Management**

[A guide to removing surgical staples](#)

[Cellular therapeutics and immunotherapies in wound healing - on the pulse of time?](#)

[Exercise improves symptoms in diabetic neuropathy](#)

[Dysregulation of miR-146a is associated with exacerbated inflammation, oxidative and endoplasmic reticulum stress in the progression of diabetic foot ulcer](#)

## **SOCIAL AND COMMUNITY CARE**

[Podcast: turning challenge into opportunity – social workers share their experiences of working in a large county](#)

['I wouldn't be here without them': the power of workplace friendships in social work](#)

[Free Loaves on Fridays: 100 care experienced children and adults tell their story](#)

[Making a reality of asset-based practice in social care](#)

[Home Office has doubled social worker numbers in its age assessment service over past year](#)

[Ethics Alive! The Ethics of Work-Based Versus Personal Advocacy](#)

[Racial Justice and Law: A Paradoxical Relationship](#)

[The contribution of school social work to climate change education and mental health support](#)

[The 'Right to an Upbringing'—Contrasting Early German and English Child Welfare Legislation for a Case Study in Comparative Social Work History](#)

[How the Israel-Gaza war has affected social workers in the UK](#)

## **Key Resources**

[e-Learning](#)

[Social Care Online](#)

[Research Register for Social Care](#)

[Social Care Research Ethics Committee](#)

## HEALTH MANAGEMENT

[Is the push for collaboration causing a retention crisis?](#)

[North Cumbria Integrated Care launches new e-rostering platform for medics](#)

[The role of integrated care systems in improving dementia diagnosis](#)

[The King's Fund submission to the Health and Social Care Committee inquiry on NHS leadership, performance and patient safety](#)

[Health inequalities in 2040: current and projected patterns of illness by deprivation in England](#)

[The future for health after Brexit](#)

[How influential is public health within local health systems?](#)

[Making social prescribing effective for older people experiencing financial hardship](#)

[The role of integrated care systems in improving dementia diagnosis](#)

[The latest proposals on health devolution: solution or provocation?](#)

[The future for health after Brexit](#)

[Collaborate to innovate: learning from NHS, charity and life sciences industry experience to build a culture of research and innovation in the UK](#)

[Balancing the risks and benefits of AI in the production of health information](#)

[Assessing the well-led key question for NHS trusts](#)

[Statistical analysis of recorded deaths in custody between 2017 and 2021](#)

[Are UK health systems dementia ready? Comparing dementia policy across the four nations of the UK](#)

[Psychological therapies for severe mental health problems: implementation guidance 2024](#)

[Professional nurse educator toolkit for mental health services](#)

[Culture of care standards for mental health inpatient services](#)

[When a doctor leaves: tackling the cost of attrition in the UK's health services](#)

[Collaborate to innovate: learning from NHS, charity and life sciences industry experience to build a culture of research and innovation in the UK](#)

[Efficiently sustainable: How hospitals can create operational sustainability](#)

## QUALITY IMPROVEMENT AGENDA

[Equitable and accessible informed healthcare consent process for people with intellectual disability: a systematic literature review](#)

[Interrupting false narratives: applying a racial equity lens to healthcare quality data](#)

[It is up to healthcare professionals to talk to us in a way that we can understand: informed consent processes in people with an intellectual disability](#)

[Delayed diagnosis of serious paediatric conditions in 13 regional emergency departments](#)

[Quality framework for remote antenatal care: qualitative study with women, healthcare professionals and system-level stakeholders](#)

[Economic analysis of surgical outcome monitoring using control charts: the SHEWHART cluster randomised trial](#)

[Routine versus prompted clinical debriefing: aligning aims, mechanisms and implementation](#)

[What and when to debrief: a scoping review examining interprofessional clinical debriefing](#)

**EVIDENCE BASED PRACTICE**  
BMJ|Evidence Centre

### BMJ Evidence Updates

[Is a smartphone application \(BlueIce\) acceptable and safe for university students who self-harm: an open study](#)

[Prospective cohort study of long-term neurological outcomes in retired elite athletes: the Advanced BiomaRker, Advanced Imaging and Neurocognitive \(BRAIN\) Health Study protocol](#)

[Determinants of normal haemoglobin concentration among under-five children in Sub-Saharan Africa: a Positive deviance inquiry using cross-sectional study design](#)

[Use of GLP1 receptor agonists in early pregnancy and reproductive safety: a multicentre, observational, prospective cohort study based on the databases of six Teratology Information Services](#)

[Actinomycetoma in a patient with pre-existing sensorineural hearing loss: a linezolid-based treatment paradigm](#)

[Rapid onset pembrolizumab-induced inflammatory arthritis diagnosed using musculoskeletal ultrasound](#)

[Rare and potentially lethal case of a round lesion in the lung](#)

[Management of oral manifestations of a child with Heimler Syndrome-2](#)

[Bilateral renal artery revascularisation in heart failure](#)

[Colonoscopy-assisted laparoscopic wedge resection for a large symptomatic colonic lipoma](#)

[Vitamin B12 deficiency presenting as neck pain and cervical radiculopathy](#)

[VaNoLaH trial: a study protocol--a multinational randomised controlled trial including two identical substudies comparing vaginal versus vNOTES \(vaginal natural orifice transluminal surgery\) hysterectomy or laparoscopic versus vNOTES hysterectomy](#)

[Navigating challenges: a socioecological analysis of sexual and reproductive health barriers among Eritrean refugee women in Ethiopia, using a key informant approach](#)

[The Birth and Beyond \(BABY\) study: protocol for a birth cohort study investigating the social and environmental determinants of pregnancy-related outcomes in Black American families](#)

[Photobiomodulation in the treatment of palmar-plantar erythrodysesthesia: a randomised controlled clinical study protocol](#)

[Health professionals perspectives on the role of obstetric ultrasonography in maternity care in rural eastern Ethiopia: a qualitative descriptive study](#)

[Safety of different concentrations of glycerine enema for meconium evacuation in preterm infants: study protocol for a randomised controlled trial](#)

[Prevalence and social determinants of anxiety and depression among adults in Ghana: a systematic review and meta-analysis protocol](#)

[Risk stratification and prognosis prediction using cardiac biomarkers in COVID-19: a single-centre retrospective cohort study](#)

[Explore the effect of apparent temperature and air pollutants on the admission rate of acute myocardial infarction in Chongqing, China: a time-series study](#)

[Self-directed digital interventions for the improvement of emotion regulation--effectiveness for mental health and functioning in adolescents: protocol for a systematic review](#)

[Association between onychomycosis and ulcerative complications in patients with diabetes: a longitudinal cohort study in Dutch general practice](#)

[Survival status and predictors of mortality among preterm neonates admitted in Bench Sheko Zone, Sheka Zone and Keffa Zone Governmental Hospitals, Southwest Ethiopia \(2021\): prospective follow-up study](#)

[Infection and telomere length: a systematic review protocol](#)

[Protocol for a prospective multicentre cohort study to address the question whether diabetes and its management is still a risk factor in fast-track joint arthroplasty](#)

[Temporal trends and the association between self-rated oral health and falls in community-dwelling older adults in South Korea: a secondary analysis of survey data](#)

[REporting quality of PiLOt randomised controlled trials in surgery \(REPORTS\): a methodological survey protocol](#)

[Association between vitamin D deficiency and benign paroxysmal positional vertigo \(BPPV\) incidence and recurrence: a systematic review and meta-analysis](#)

[Remote neuropsychological assessment of patients with neurological disorders and injuries--a study protocol for a cross-sectional case-control validation study](#)

[Association of the Controlling Nutritional Status \(CONUT\) score with all-cause and cause-specific mortality in patients with diabetic kidney disease: evidence from the NHANES 2009-2018](#)

[Web-based cognitive rehabilitation intervention for cancer-related cognitive impairment following chemotherapy for aggressive lymphoma: protocol for a randomised pilot trial](#)

[Estimating the incidence of COVID-19, influenza and respiratory syncytial virus infection in three regions of Queensland, Australia, winter 2022: findings from a novel longitudinal testing-based sentinel surveillance programme](#)

[Qualitative interview study of rheumatology patients experiences of COVID-19 shielding to explore the physical and psychological impact and identify associated support needs](#)

[Willingness and preferences for long-acting injectable PrEP among US men who have sex with men: a discrete choice experiment](#)



**Cochrane**

[Prognostic factors for return to work following knee arthroplasty](#)

[Vitamin A for preventing acute lower respiratory tract infections in children up to seven years of age](#)





NICE Clinical Knowledge Summaries provides primary care practitioners with a readily accessible summary of the current evidence base and practical guidance on best practice in respect of over 300 common and/or significant primary care presentations.

The service is being regularly maintained and upgraded as and when significant new evidence emerges and up to 10 new topics will be added each year. You can access the service [here](#).

### **National Institute for Health Research (NIHR) Health Technology Assessment**

[Shoulder dislocation: extra physiotherapy is no better than self-management](#)

#### **DoH Press Releases/New Publications**

[Guidance: Having a child through surrogacy](#)

[Call for evidence outcome: Code on Genetic Testing and Insurance: call for evidence](#)

[Consultation outcome: Amending references to PHE and HSCB in the Human Medicines Regulations](#)

[Guidance: Employment advisers in musculoskeletal pathways application guidance](#)

[Open consultation: Community water fluoridation expansion in the north east of England](#)

[Transparency data: DHSC: ministerial gifts, hospitality, travel and meetings, October to December 2023](#)

[News story: i.AI and NHS England sign Collaboration Charter to support the use of AI in the NHS](#)

[Open call for evidence: Fit Note Reform: call for evidence](#)

## **LIBRARY "BITS AND PIECES"**

### **Published recently? Completed a research project?**

Tell us about it! Fill out our publication or research repository form by clicking [here](#) and we'll display your work on our website

[Publication repository](#)

[Research repository](#)

The above current awareness bulletin has been produced by Keyll Darree Library and Information Service. We aim to produce the bulletin every week. If you need any help locating or accessing any of the items included in this issue, please contact the library staff on 642993/642974.

As usual, we welcome any feedback, so please let us know if you have any comments about format, content, length, arrangement or indeed, any other observations. If you know of anyone else who might like to receive the bulletin, or you would like your name removed from the distribution list, again, please let us know.

Check out our library website at [www.librarykeylldarree.gov.im](http://www.librarykeylldarree.gov.im) for details of all our services, facilities and any forthcoming events.