



REAYRT MIE

Phase 3B (Station View)
First Time Buyer Homes



Birch 2&3 Front Elevation

WELCOME TO REAYRT MIE

Designed for low-maintenance modern living, these warm, energy-efficient new two and three-bedroom first-time buyer homes are conveniently close to everything you need.

Issue 01- 23/11/22

DISCLAIMER: The information and images contained in this document are intended to convey the concept and vision for the 'Reayrt Mie' Ballasalla Development. They are for guidance only, may alter as work progresses and do not necessarily represent a true and accurate depiction of the finished product. This document does not form part of any contract nor does it form any representation or warranty in relation to the Developer, its Employees, Agents or to the 'Reayrt Mie' Ballasalla Development or any of their related developments.

THE PERFECT Location

Whether it's long walks with the dog, enjoying the garden, or spending time with friends and family, Reayrt Mie is ideally placed for a comfortable, convenient lifestyle.

The local pub, post office and village shop are all within walking distance, along with local schools. A wide range of amenities and the island's airport can be found just a few minutes' drive to the south in neighbouring Castletown.

Public transport links from Ballasalla are excellent, and the island's capital Douglas is only 15 minutes' drive to the north.

EDUCATION

Ballasalla Primary School.....	0.7 mile
Hopes & Dreams Nursery.....	0.7 mile
King Williams College.....	2.2 miles
Castle Rushen High School.....	3.6 miles

LOCAL AMENITIES

Convenience Store.....	0.6 mile
The Whitestone Public House.....	0.7 mile
Ballasalla Medical Centre.....	0.7 mile
Ballasalla Village Shop & Post Office.....	0.7 mile
The Cub House Play Centre.....	0.7 mile
Dental Surgery.....	0.8 mile
Silverdale Glen & Cafe.....	1.0 mile
Petrol Station.....	1.0 mile
Nearest Supermarket.....	2.7 miles
Southern Swimming Pool.....	3.6 miles

TRAVEL

Railway Station*.....	0.8 mile
Ronaldsway Airport.....	1.3 miles
Castletown.....	2.5 miles
Douglas.....	7.5 miles

*IOM Steam Railway - seasonal operation only

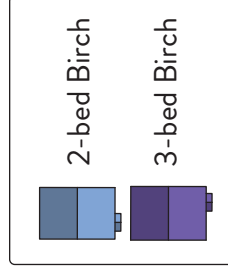


Location Plan

DISCLAIMER: The information and images contained in this document are intended to convey the concept and vision for the 'Reayrt Mie' Ballasalla Development. They are for guidance only, may alter as work progresses and do not necessarily represent a true and accurate depiction of the finished product. This document does not form part of any contract nor does it form any representation or warranty in relation to the Developer, its Employees, Agents or to the 'Reayrt Mie' Ballasalla Development or any of their related developments.



KEY

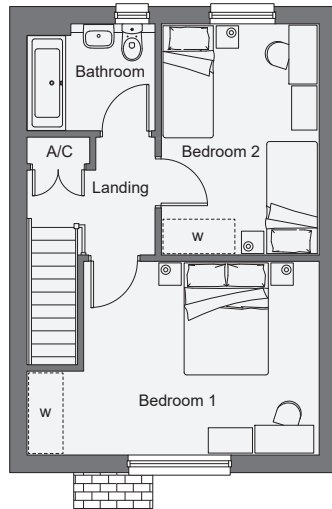


Site Plan

Phase 3B

'Station View at Reayrt Mie', Ballasalla

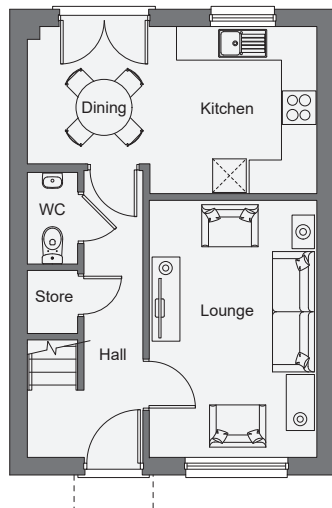
DISCLAIMER: The information and images contained in this document are intended to convey the concept and vision for the 'Reayrt Mie' Ballasalla Development. They are for guidance only, may alter as work progresses and do not necessarily represent a true and accurate depiction of the finished product. This document does not form part of any contract nor does it form any representation or warranty in relation to the Developer, its Employees, Agents or to the 'Reayrt Mie' Ballasalla Development or any of their related developments.



FIRST FLOOR

Bedroom 1
3.42m x 5.16m (11'3" x 16'11") max

Bedroom 2
4.08m x 2.76m (13'5" x 9'1")

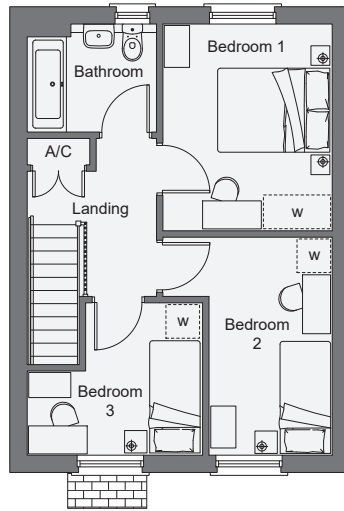


GROUND FLOOR

Lounge
4.49m x 3.01m (14'9" x 9'11")

Kitchen/ Dining
5.16m x 2.98m (16'11" x 9'9") max.

Birch 2 FTB House Type 'Reayrt Mie', Ballasalla

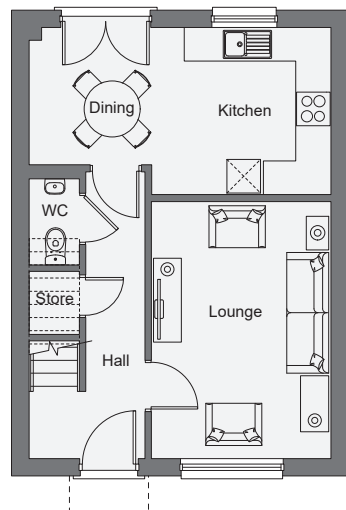


FIRST FLOOR

Bedroom 1
2.98m x 3.65m (9'9" x 12'0")

Bedroom 2
3.85m x 2.16m (12'8" x 7'1")

Bedroom 3
3.09m x 2.68m (10'2" x 8'10") max.



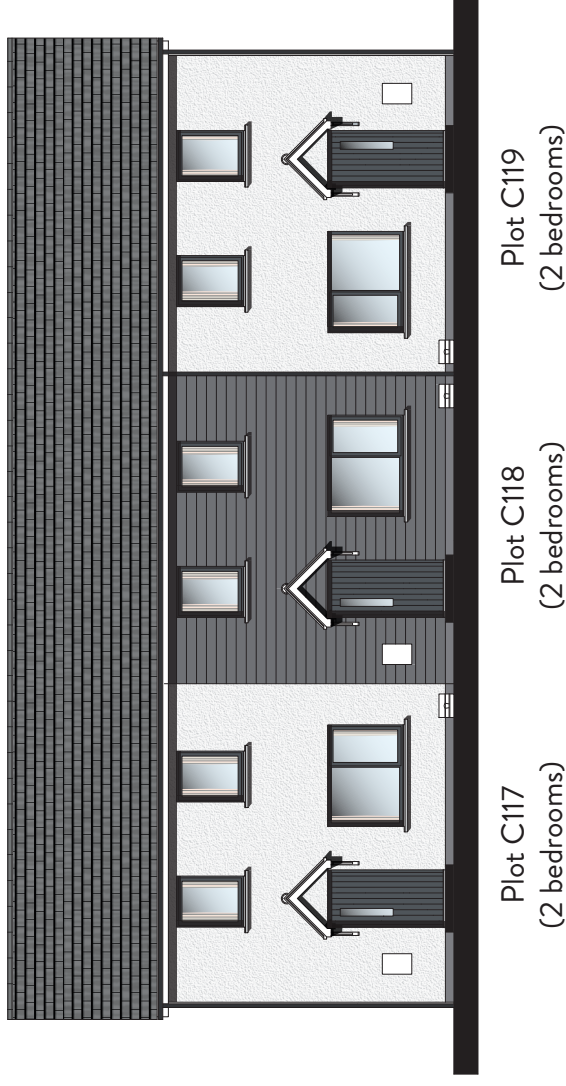
GROUND FLOOR

Lounge
3.24m x 4.49m (10'8" x 14'9")

Kitchen/ Dining
5.38m x 2.98m (17'8" x 9'9") max.

Birch 3 FTB House Type 'Reayrt Mie', Ballasalla

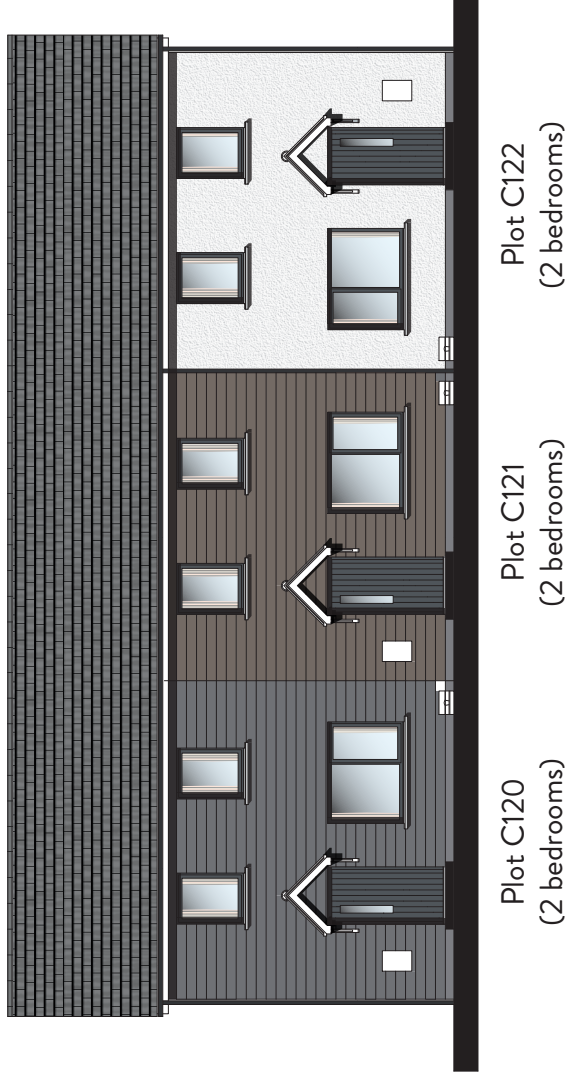
y-dandara



Birch 2 FTB House Type Elevations 'Reayrt Mie' (Phase 3B), Ballasalla

DISCLAIMER: The information and images contained in this document are intended to convey the concept and vision for the 'Reayrt Mie' Ballasalla Development. They are for guidance only, may alter as work progresses and do not necessarily represent a true and accurate depiction of the finished product. This document does not form part of any contract nor does it form any representation or warranty in relation to the Developer, its Employees, Agents or to the 'Reayrt Mie' Ballasalla Development or any of their related developments.

y-dandara



Birch 2 FTB House Type Elevations 'Reayrt Mie' (Phase 3B), Ballasalla

DISCLAIMER: The information and images contained in this document are intended to convey the concept and vision for the 'Reayrt Mie' Ballasalla Development. They are for guidance only, may alter as work progresses and do not necessarily represent a true and accurate depiction of the finished product. This document does not form part of any contract nor does it form any representation or warranty in relation to the Developer, its Employees, Agents or to the 'Reayrt Mie' Ballasalla Development or any of their related developments.



Birch 2&3 FTB House Type Elevations 'Reayrt Mie' (Phase 3B), Ballasalla