

ISLE OF MAN DIGEST OF ECONOMIC AND SOCIAL STATISTICS 2008

Contents:

Introduction

Map of the Isle of Man

1. GEOGRAPHY AND CLIMATE

- 1.1 Geographical Features
- 1.2 Meteorological Data 2007

2. POPULATION

- 2.1 Census and Resident Population 1951-2006
- 2.2 Resident Population by Country of Birth 2006
- 2.3 Population by Town, Village and Parish 1961-2006
- 2.4 Population in Key Settlements 1961-2006 (Chart)
- 2.5 Resident Population by Age and Sex 2001 and 2006
- 2.6 Resident Population Age Profile 1971-2006 (Chart)
- 2.7 Births, Deaths and Natural Change 1998-2007
- 2.8 Births, Deaths and Natural Change 1998-2007 (Chart)

3. EMPLOYMENT AND THE LABOUR MARKET

- 3.1 Resident Population Aged 16 and Over by Sex and Employment Status 2006
- 3.2 Economically Active Resident Population by Sex and Employment Status 2006 (Chart)
- 3.3 Employment by Sector 1961-2006
- 3.4 Number Registered Unemployed by Sex 1998-2007
- 3.5 Number Registered Unemployed 1998-2007 (Chart)
- 3.6 Seasonal Variation in Number Register Unemployed 1998-2007 (Chart)
- 3.7 Job Vacancies 1998-2007
- 3.8 Seasonal Variations in Job Vacancies 1998-2007 (Chart)
- 3.9 Work Permits Issued by Type 1998-2007
- 3.10 Work Permits Issued 1998-2007 (Chart)
- 3.11 Strikes and Lockouts, Number by Economic Activity 1998-2007
- 3.12 Occupational Injuries 1998-2007

4. PRICES AND EARNINGS

- 4.1 Retail Price Index 1976-2007
- 4.2 Annual Rate of Inflation 1977-2007
- 4.3 Annual Rate of Inflation in the Isle of Man and the United Kingdom 1987-2007 (Chart)
- 4.4 Average Weekly Earnings 1998-2007
- 4.5 Median Weekly Earnings 1998-2007
- 4.6 Distribution of Weekly Earnings 1998-2007
- 4.7 Distribution of Earnings 2007 (Chart)

5. FINANCE AND COMMERCE

- 5.1 Employment in Finance (Full-Time and Part-Time) by Sex 2006
- 5.2 Employment in Finance (Full-Time and Part-Time) by Sex as a Percentage of Employed Population 2006
- 5.3 Deposit Base 1998-2007
- 5.4 Deposit Base 1998-2007 (Chart)
- 5.5 Collective Investment Schemes and Funds Under Management 1998-2007
- 5.6 Authorised Insurers 1998-2007
- 5.7 Company Registrations under the 1931 Act 1998-2007

6. **MANUFACTURING**

- 6.1 Government Financial Assistance Paid to Manufacturing Industry 2002/03-2006/07
- 6.2 Sales of Electricity 1998-2007
- 6.3 Sales of Electricity (GWh) 1998-2007 (Chart)

7. **TOURISM AND PASSENGER ARRIVALS**

- 7.1 Registered Tourist Premises 2002-2007
- 7.2 Passenger Arrivals by Mode of Travel 1998-2007
- 7.3 Scheduled Passenger Departures by Category 1998-2007
- 7.4 Period Visitors Staying in Paid Accommodation: Average Length of Stay and Expenditure per Head 1998-2007
- 7.5 Period Visitors Staying in Paid Accommodation by Area of Residence 2007

8. **AGRICULTURE AND FISHERIES**

- 8.1 Agricultural Holdings by Size 1998-2007
- 8.2 Agricultural Land Use 1998-2007
- 8.3 Agricultural and Horticultural Workforce 1998-2007
- 8.4 Cattle and Sheep 1998-2007
- 8.5 Pigs and Poultry 1998-2007
- 8.6 Weight and Value of Fish Landed by Species 1998-2007

9. **HEALTH**

- 9.1 Health Service Expenditure 1997/98-2006/07
- 9.2 Employment in Hospital Medical Services 2003/04-2007/08
- 9.3 Employment in Professional Medical Services 1998-2007
- 9.4 General Practitioners and Patients 1998-2007

10. **SOCIAL SECURITY**

- 10.1 Income Support: Pensions and Allowances 1998-2007
- 10.2 Social Security Benefits by Type 1998-2007

11. **EDUCATION**

- 11.1 Primary and Secondary State School Populations by Age 1998-2007
- 11.2 Attendance at Isle of Man College 1997/98-2005/06
- 11.3 Support Awarded to Students 1997/98 -2006/07
- 11.4 Examination Achievements 1998-2007
- 11.5 Students in Further and Higher Education 1997/98-2006/07
- 11.6 Academic Performance 1997/98-2006/07

12. **HOUSING**

- 12.1 Dwellings Completed 1998-2007
- 12.2 Planning Applications 1997/98-2006/07
- 12.3 House Prices 1998-2007
- 12.4 Annual Average House Price 1998-2007 (Chart)
- 12.5 Households by Area of Residence 1961-2006
- 12.6 Households by Tenure 2001

13. TRANSPORT AND COMMUNICATIONS

- 13.1 Air and Sea Routes by Distance and Duration of Journey 2007
- 13.2 Aircraft Movements by Type of Flight 1998-2007
- 13.3 Passengers on Scheduled Air Services 1998-2007
- 13.4 Volume of Passenger Traffic by Air 1998-2007
- 13.5 Harbour Traffic: Passengers, Vehicles and Freight 1997/98-2006/07
- 13.6 Number and Type of Vessels Registered in the Isle of Man and Gross Registered Tonnage 1998-2007
- 13.7 Postal Traffic 1997/98-2007
- 13.8 Letters Posted 1997/98-2007 (Chart)

14. CRIME AND ROAD ACCIDENTS

- 14.1 Offences by Category 1998-2007
- 14.2 Offences by Category 1998-2007 (Chart)
- 14.3 Road Accidents 1998-2007
- 14.4 Persons Injured or Killed in Road Accidents 1998-2007 (Chart)

15. NATIONAL INCOME

- 15.1 National Income at Factor Cost by Sector at Current Prices 1996/97-2005/06
- 15.2 National Income at Factor Cost by Sector at 2005 Prices 1996/97-2005/06
- 15.3 Income Generated in Basic Sectors from Manx Sources at Current Prices 1996/97-2005/06
- 15.4 Income Generated in Basic Sectors from Manx Sources at 2005 Prices 1996/97-2005/06
- 15.5 Income per head in the Isle of Man and the United Kingdom 1996/97 – 2005/06

16. GOVERNMENT REVENUE AND EXPENDITURE

- 16.1 Central Government Gross Expenditure 1997/98-2006/07
- 16.2 Central Government Gross Expenditure at 2006 Prices 1997/98-2006/07
- 16.3 Treasury Net Revenue Payments 1997/98-2006/07
- 16.4 Treasury Net Revenue Payments at Constant Prices 1997/98-2006/07
- 16.5 Treasury Receipts at Current Prices 1997/98 – 2006/07
- 16.6 Treasury Receipts at Constant Prices 1997/98 – 2006/07
- 16.7 Manx Currency in Circulation 1998-2007
- 16.8 Manx Currency in Circulation 1998-2007 (Chart)
- 16.9 Reserve Fund 1998-2007
- 16.10 Value of Investments including cash 1998-2007 (Chart)

Additional Publications

INTRODUCTION

The 2008 Digest of Economic and Social Statistics presents a comprehensive range of economic and social data relating to the Isle of Man. The following tables and charts contain the most recent data available at 1st January 2008 and cover areas of public interest, including finance and commerce, transport and communications, population and employment. All tables and charts shown in the Digest refer specifically to the Isle of Man. Where comparative statistics are shown, the countries involved are denoted accordingly.

The information contained in this publication is provided in broadly two ways. In part it is generated by the Economic Affairs Division itself, through exercises such as the Census, the Passenger Survey and the Earnings Survey. All other information is provided by a wide range of contributors within other Departments of Government.

It is hoped that the contents of the 2008 Digest will meet the information requirements of those who refer to it. However, additional information under any of the headings shown may be available and can be obtained by contacting the Economic Affairs Division.

*Zahed Miah
Economic Affairs Division
Isle of Man Treasury
Illiam Dhone House
2 Circular Road
Douglas
Isle of Man
IM1 1PQ*

*Telephone: +44 1624 685742
Fax: +44 1624 685747
Email: economics@gov.im*

1. GEOGRAPHY AND CLIMATE

1.1 GEOGRAPHICAL FEATURES

Position:	Latitude:	54° 3' - 54°25'N	
	Longitude:	4°18' - 4°47'W	
Area:		221 sq. miles (572 sq. km)	
Length:	Point of Ayre to Chicken Rock	32.5 miles (52 km)	
Width:	Contrary Head to Clay Head	13.5 miles (22 km)	
Perimeter:		100 miles (160 km)	
Longest River:	Sulby	10.5 miles (17 km)	
Highest Peaks:	Snaefell	2,036 ft (621 m)	
	North Barrule	1,860 ft (565 m)	
	Clagh Ouyr	1,808 ft (551 m)	
Shortest distance to:	England	30 miles (48 km)	(Ramsey - Whitehaven)
	Wales	48 miles (77 km)	(Calf of Man - Carmel Head, Anglesey)
	Scotland	16 miles (26 km)	(Point of Ayre - Burrow Head)
	N. Ireland	27 miles (43 km)	(Peel - Strangford Lough)

1.2 METEOROLOGICAL DATA 2007

	Average daily temperature (°C)	Total hours of sunshine	Total hours of sunshine on brightest day	Rainfall (mm)	Rainfall on wettest day (mm)	Highest recorded temperature (°C)	Lowest recorded temperature (°C)	Number of days of rain
January	7.9	68.2	7.2	73.3	23.2	12.7	(1.4)	19
February	6.7	86.3	7.9	78.5	11.7	11.6	(2.1)	17
March	7.5	168.3	10.3	43.2	15.0	13.2	(2.2)	15
April	10.8	231.4	13.3	14.2	4.7	18.0	1.5	5
May	11.5	221.5	14.7	47.5	10.8	18.5	4.3	16
June	14.3	178.7	14.7	118.2	35.7	22.3	9.0	12
July	14.8	197.3	12.9	63.0	14.8	19.3	9.1	19
August	15.0	178.7	13.5	66.6	15.1	21.5	8.8	13
September	15.4	130.6	11.6	38.7	10.4	20.3	4.5	15
October	13.8	123.4	9.8	35.8	13.9	16.8	5.1	9
November	12.3	46.0	6.9	84.0	19.9	16.2	(0.9)	21
December	7.6	33.0	6.5	104.1	27.6	13.9	0.8	16
Over the year	11.5	1,663.4	12.9	767.1	10.4	19.3	(2.2)	177

Source: Department of Transport, Meteorological Office.

2. POPULATION

2.1 CENSUS AND RESIDENT POPULATION 1951-2006

Date of Census	Resident Population	Visitors to the Island	Census Population
1951 - April 8/9	54,024	1,229	55,253
1961 - April 23/34	47,166	967	48,133
1966 - April 24/25	49,312	1,111	50,423
1971 - April 25/26	53,228	1,353	54,581
1976 - April 4/5	60,496	1,227	61,723
1981 - April 5/6	64,679	1,422	66,101
1986 - April 6/7	64,282	1,778	66,060
1991 - April 14/15	69,788	1,479	71,267
1996 - April 14/15	71,714	2,966	74,680
2001 - April 29/30	76,315	1,951	78,266
2006 - April 23/24	80,058	1,894	81,952

Note: Figures collected in Censuses of the Isle of Man population.
Source: Treasury, Economic Affairs Division.

2.2 RESIDENT POPULATION BY COUNTRY OF BIRTH 2006

Country of Birth	Total	As a percentage of Total Resident Population
Isle of Man	38,069	47.6
England	29,785	37.2
Wales	949	1.2
Scotland	2,707	3.4
N.Ireland	1,719	2.1
Channel Islands	204	0.3
Republic of Ireland	1,705	2.1
Other Europe (EU)	1,428	1.8
Other Europe (Non EU)	182	0.2
Middle East	71	0.1
Asia	1,276	1.6
Africa	1,087	1.4
North America	343	0.4
Central America	10	0.0
South America	65	0.1
Caribbean	113	0.1
Australasia	287	0.4
Other/Unidentified	58	0.1
Total Resident Population	80,058	100.0

Note: (i) Figures collected in the 2006 Census of the Isle of Man population.
(ii) Percentages have been rounded so the total may not equal 100.
Source: Treasury, Economic Affairs Division.

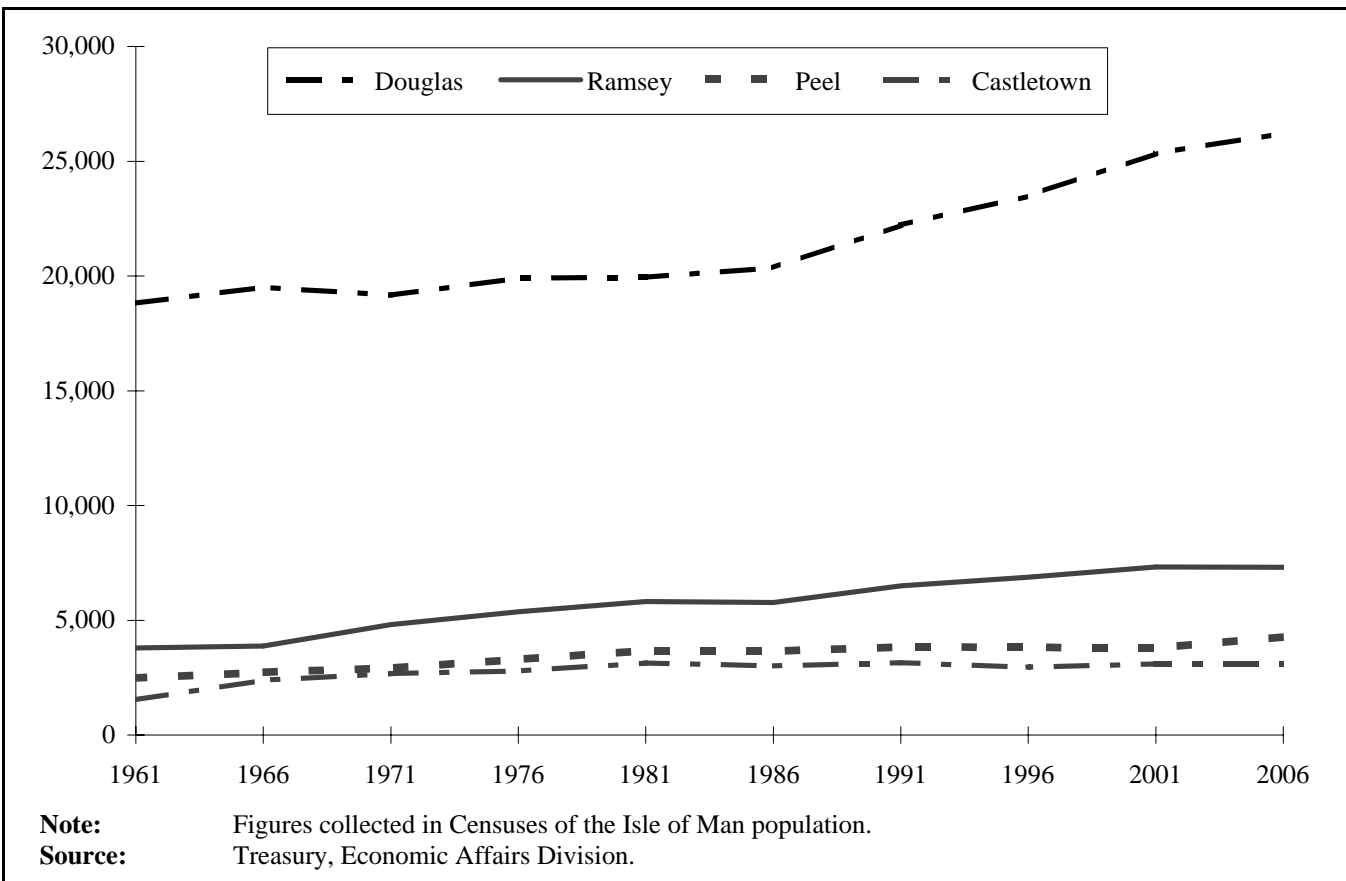
2.3 POPULATION BY TOWN, VILLAGE AND PARISH 1961-2006

	1961	1966	1971	1976	1981	1986	1991	1996	2001	2006
Towns:										
Douglas	18,821	19,517	19,163	19,897	19,944	20,368	22,214	23,487	25,347	26,218
Ramsey	3,789	3,880	4,807	5,372	5,818	5,778	6,496	6,874	7,322	7,309
Peel	2,483	2,739	2,911	3,295	3,688	3,660	3,829	3,819	3,785	4,280
Castletown	1,536	2,378	2,671	2,788	3,141	3,019	3,152	2,958	3,100	3,109
Village Districts:										
Port Erin	1,242	1,316	1,543	2,356	2,812	2,868	3,024	3,218	3,369	3,575
Port St. Mary	1,258	1,403	1,411	1,525	1,572	1,610	1,762	1,874	1,941	1,913
Laxey	1,126	1,129	1,127	1,242	1,257	1,279	1,367	1,433	1,725	1,768
Onchan	3,618	3,999	4,958	6,809	7,879	7,949	8,483	8,656	8,803	9,172
Parish Districts:										
Andreas	790	732	805	949	1,113	1,115	1,156	1,144	1,152	1,381
Arbory	710	689	852	1,414	1,651	1,610	1,661	1,622	1,714	1,723
Ballaugh	541	505	498	655	681	745	802	812	868	1,042
Braddan	1,834	1,929	1,994	2,095	2,520	1,804	2,046	2,527	2,665	3,151
Bride	344	359	320	428	413	378	418	405	408	418
German	722	690	729	866	1,029	1,051	1,025	1,038	1,010	995
Jurby	796	469	535	640	616	582	682	624	677	659
Lezayre	1,220	1,455	1,097	1,339	1,468	1,362	1,503	1,047	1,134	1,237
Lonan	899	985	1,045	1,129	1,126	1,139	1,232	1,292	1,393	1,563
Malew	1,949	1,447	1,841	2,116	2,080	2,054	2,216	2,140	2,262	2,304
Marown	858	908	967	1,230	1,290	1,281	1,553	1,564	1,879	2,086
Maughold	776	843	689	763	759	755	828	858	941	950
Michael	657	705	770	839	977	1,044	1,244	1,261	1,431	1,640
Patrick	978	946	985	1,078	1,077	1,044	1,192	1,198	1,305	1,294
Rushen	826	997	1,141	1,274	1,341	1,360	1,446	1,441	1,504	1,591
Santon	360	403	369	397	427	427	457	422	580	680
Total	48,133	50,423	53,228	60,496	64,679	64,282	69,788	71,714	76,315	80,058

Note: (i) Figures collected in Censuses of the Isle of Man population.
(ii) Boundary changes have been made in some areas.
(iii) Statistics for 1961 and 1966 refer to census population. All other statistics refer to resident population.

Source: Treasury, Economic Affairs Division.

2.4 POPULATION IN KEY SETTLEMENTS 1961-2006

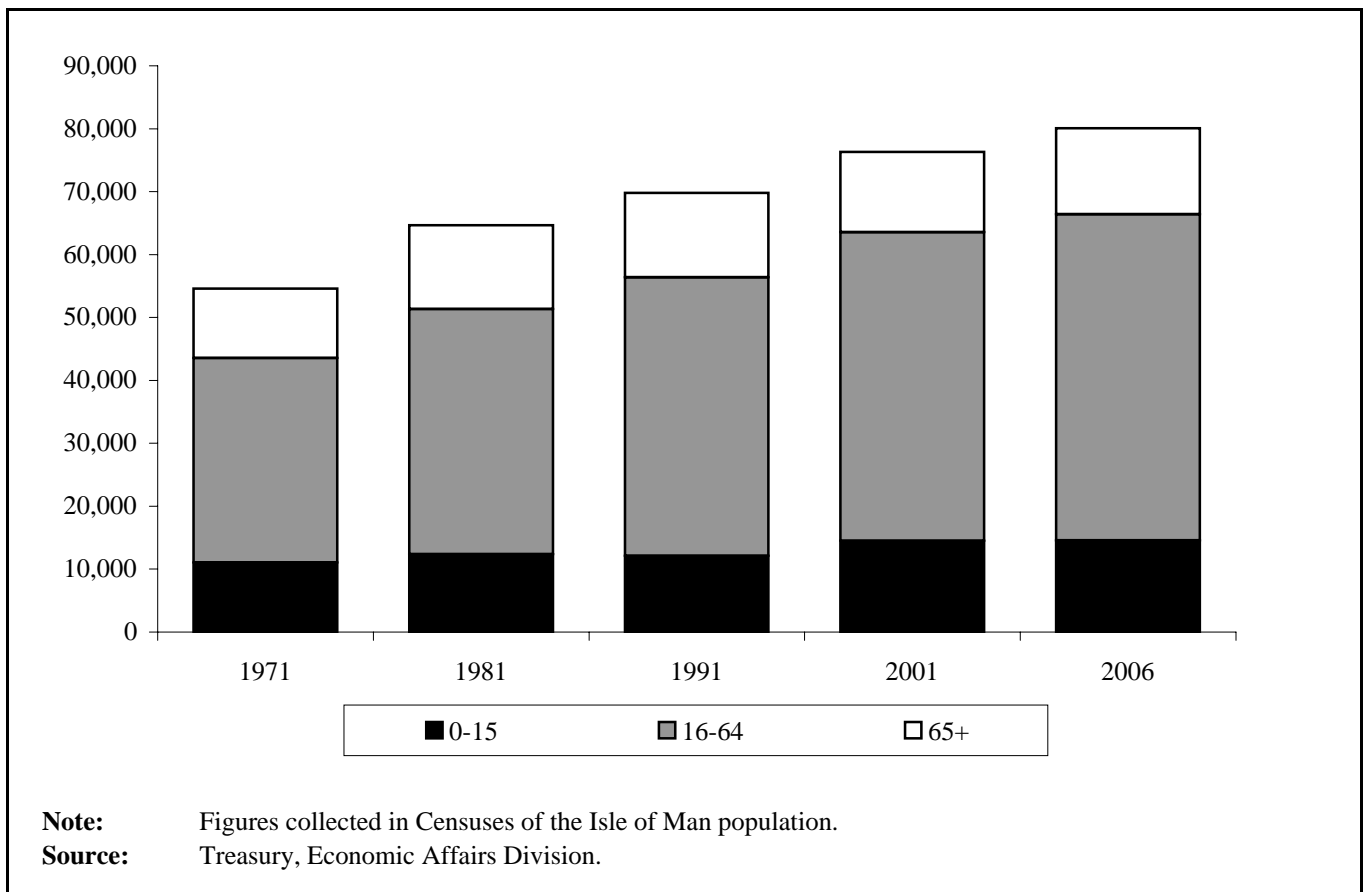


2.5 RESIDENT POPULATION BY AGE AND SEX 2001 AND 2006

Age Last Birthday	2001			2006		
	Male	Female	Total	Male	Female	Total
0-4	2,229	1,997	4,226	2,147	1,963	4,110
5-9	2,365	2,262	4,627	2,391	2,118	4,509
10-14	2,426	2,333	4,759	2,510	2,408	4,918
15-19	2,204	2,179	4,383	2,537	2,387	4,924
20-24	2,153	2,095	4,248	2,223	2,161	4,384
25-29	2,279	2,470	4,749	2,206	2,279	4,485
30-34	2,807	2,827	5,634	2,492	2,687	5,179
35-39	3,061	2,990	6,051	3,019	3,012	6,031
40-44	2,736	2,835	5,571	3,227	3,158	6,385
45-49	2,561	2,468	5,029	2,884	2,945	5,829
50-54	2,916	2,798	5,714	2,695	2,548	5,243
55-59	2,316	2,303	4,619	2,938	2,839	5,777
60-64	1,980	1,967	3,947	2,282	2,315	4,597
65-69	1,633	1,726	3,359	1,909	1,924	3,833
70-74	1,340	1,723	3,063	1,469	1,615	3,084
75-79	1,128	1,605	2,733	1,150	1,572	2,722
80-84	694	1,150	1,844	816	1,283	2,099
85-89	389	742	1,131	414	789	1,203
90-94	127	373	500	172	387	559
95 and over	28	100	128	42	145	187
Total	37,372	38,943	76,315	39,523	40,535	80,058

Note: Figures collected in Censuses of the Isle of Man population.
Source: Treasury, Economic Affairs Division.

2.6 RESIDENT POPULATION AGE PROFILE 1971-2006

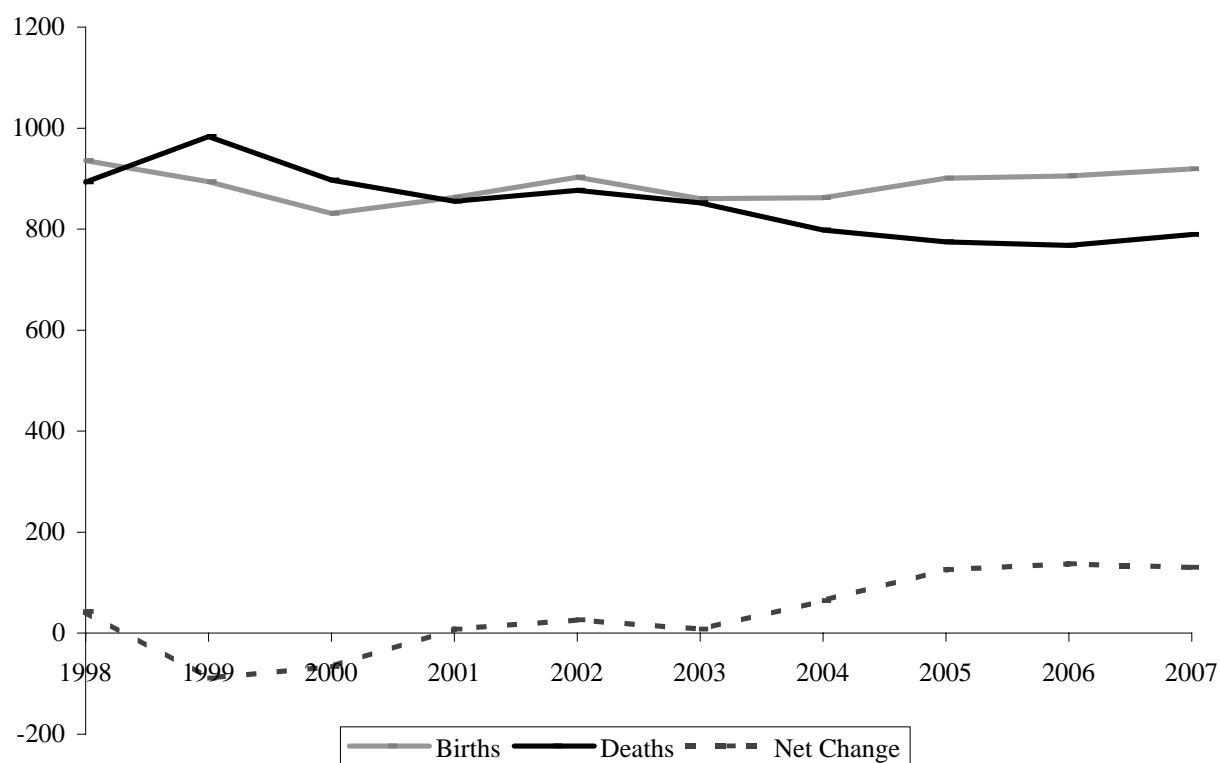


2.7 BIRTHS AND DEATHS 1998 - 2007

	Births			Deaths			Natural Increase
	Males	Females	Total	Males	Females	Total	
1998	510	426	936	404	489	893	43
1999	470	424	894	471	512	983	-89
2000	451	380	831	436	461	897	-66
2001	472	391	863	396	459	855	8
2002	481	422	903	428	449	877	26
2003	441	419	860	380	472	852	8
2004	438	424	862	390	408	798	64
2005	480	421	901	380	395	775	126
2006	483	422	905	354	414	768	137
2007	472	447	919	351	438	789	130

Source: General Registry

2.8 BIRTHS, DEATHS AND NATURAL CHANGE 1998 - 2007



Source: General Registry

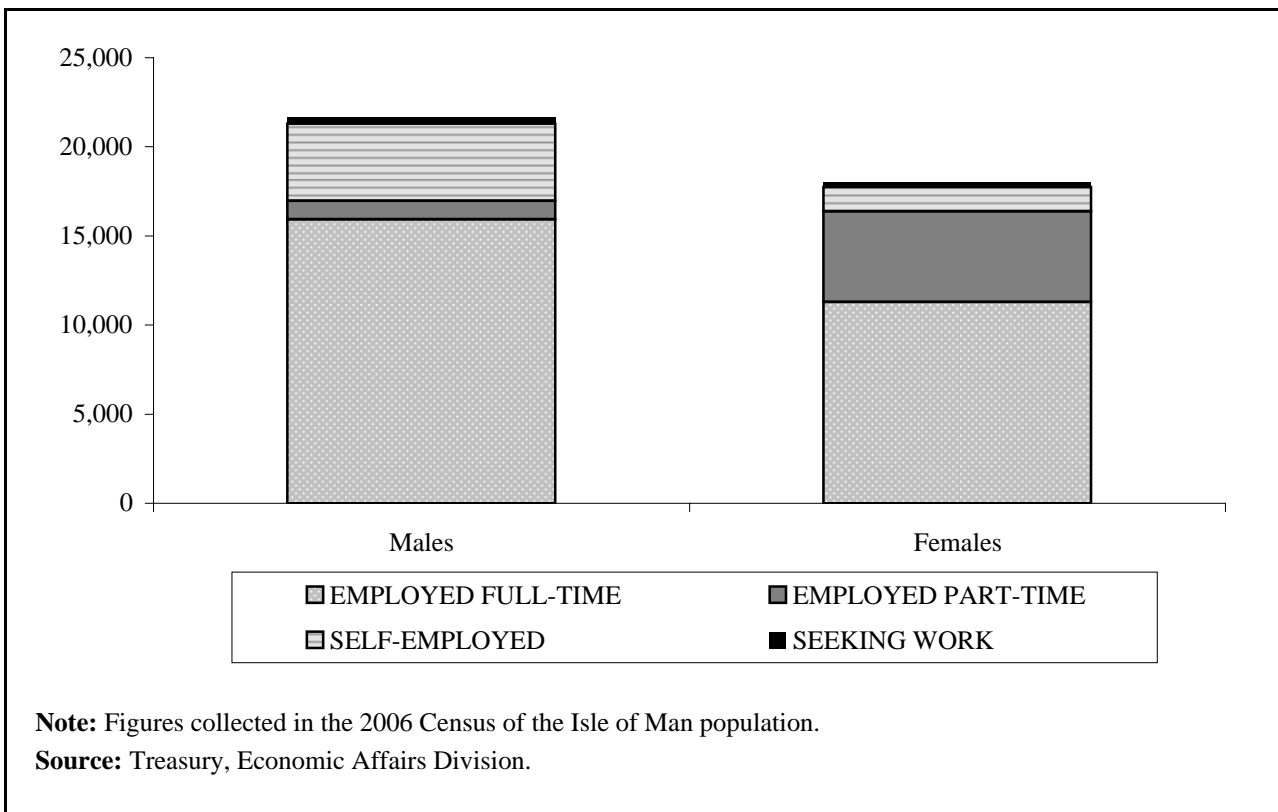
3. EMPLOYMENT AND THE LABOUR MARKET

3.1 RESIDENT POPULATION AGED 16 AND OVER BY SEX AND EMPLOYMENT STATUS 2006

	Male	Female	Total
Economically Active	22,654	19,139	41,793
<i>of which:</i>			
Works for an employer full-time	16,407	11,906	28,313
Works for an employer part-time	1,243	5,158	6,401
Works for more than one employer	152	415	567
Self-employed employing others	1,365	467	1,832
Self-employed not employing others	3,345	1,204	4,549
Unemployed and looking for work	634	376	1,010
Not in work and not looking for work	9,913	13,890	23,803
<i>of which:</i>			
Unable to work due to long term sickness	523	441	964
Unable to work due to disability	450	343	793
Retired	6,299	8,694	14,993
At school or in full-time education	1,550	1,596	3,146
Looks after home or family	161	3,075	3,236
Other	296	266	562
Total	32,567	33,029	65,596

Note: Figures collected in the 2006 Census of the Isle of Man population.
Source: Treasury, Economic Affairs Division.

3.2 ECONOMICALLY ACTIVE RESIDENT POPULATION BY SEX AND EMPLOYMENT STATUS 2006



3.3 EMPLOYMENT BY SECTOR 1961- 2006

Industrial Sector	Number in Employment													
	1961		1971		1981		1991		1996		2001		2006	
		%		%		%		%		%		%		%
Agriculture, forestry, fishing	1,911	10	1,433	6	1,412	5	1,240	4	938	3	543	1	642	2
Manufacturing: food and drink	435	2	538	2	733	3	448	1	711	2	970	2	355	1
Manufacturing: engineering	620	3	1,215	5	1,501	6	1,159	4	1,511	5	1,035	3	970	2
Manufacturing: textiles, clothing & footwear	621	3	599	3	395	2	322	1	256	1	188	0	52	0
Manufacturing: other, mining & quarrying	513	3	759	3	838	3	1,419	4	1,084	3	992	3	871	2
Construction	1,664	9	2,755	12	2,921	11	3,404	11	3,372	10	2,512	6	3,374	8
Gas, electricity and water	465	2	504	2	496	2	513	2	462	1	515	1	603	1
Transport and communication ^(iv)	1,875	10	1,750	8	2,300	9	2,437	8	2,688	8	3,331	9	3,660	9
Wholesale distribution	672	4	845	4	867	3	851	3	781	2	728	2	905	2
Retail distribution	2,411	13	2,696	12	2,687	10	2,993	9	2,911	9	3,644	9	3,645	9
Insurance, banking, finance and business services	370	2	760	3	1,515	6	4,353	14	5,941	18	8,959	23	9,395	23
Professional, educational, medical and scientific services	1,702	9	2,690	12	3,737	14	5,438	17	6,081	18	7,296	19	8,060	20
Tourist accommodation	(1,451	7	987	4	856	3	765	2	743	2	362	1
Other catering and entertainment	(4,344	23	678	3	996	4	1,403	4	1,156	3	2,116	5	1,897	5
Miscellaneous services	(1,954	9	2,530	10	2,849	9	2,768	8	2,373	6	3,075	8
Public administration	1,250	7	1,134	5	1,625	6	2,144	7	2,147	6	3,105	8	2,898	7
Not stated or inadequately described	146	1	372	2	324	1	0	0	5	0	0	0	19	0
Total	18,999	100	22,133	100	25,864	100	31,829	100	33,577	100	39,050	100	40,783	100

Notes: (i) Percentages have been rounded and so totals may not equal 100 in all cases.
(ii) Changes have been made to the definition of some industrial sectors.
(iii) Figures collected in Censuses of the Isle of Man population.
(iv) 2001 and 2006 figures include the Information and Communications Technology sector.

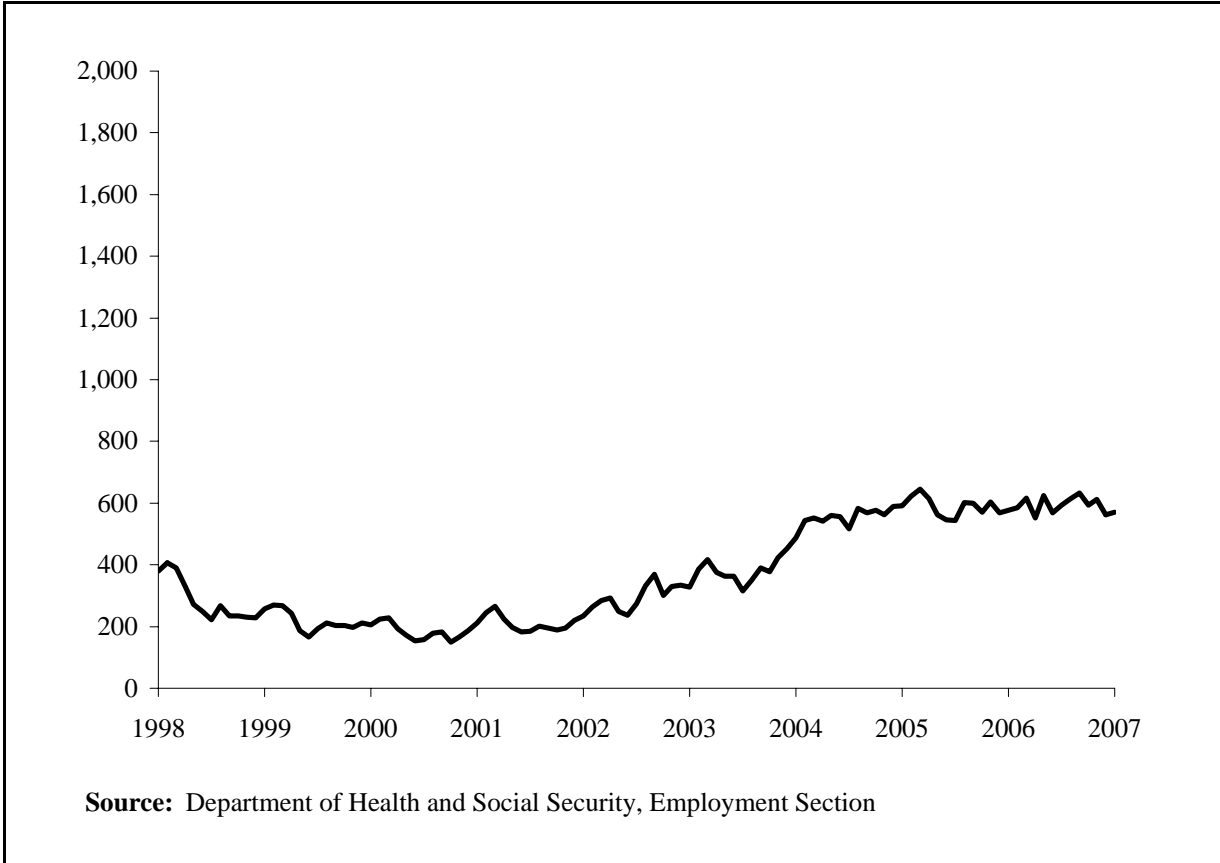
Source: Treasury, Economic Affairs Division.

3.4 NUMBER REGISTERED UNEMPLOYED BY SEX 1998-2007

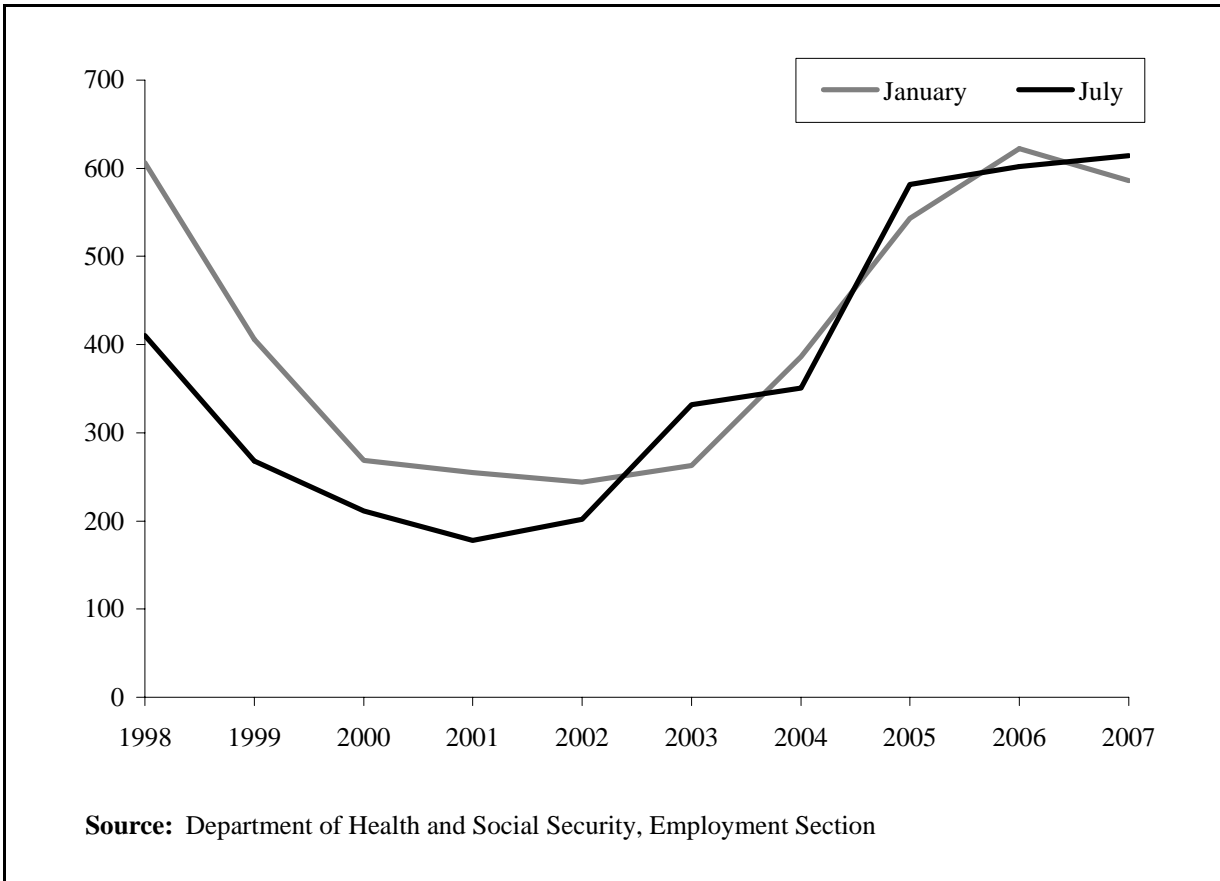
		Jan	Feb	Mar	Apr	May	Jun	Jul	Aug	Sep	Oct	Nov	Dec
1998:	Males	445	393	379	343	274	282	283	290	255	272	267	276
	Females	161	160	157	127	108	104	127	140	115	105	106	104
	Total	606	553	536	470	382	386	410	430	370	377	373	380
1999:	Males	301	285	237	203	198	168	185	166	175	169	162	185
	Females	105	105	93	68	51	55	83	68	60	62	66	73
	Total	406	390	330	271	249	223	268	234	235	231	228	258
2000:	Males	193	184	169	138	116	134	139	147	140	144	147	150
	Females	76	83	73	49	51	58	72	57	63	54	64	56
	Total	269	267	242	187	167	192	211	204	203	198	211	206
2001:	Males	184	164	128	120	114	111	122	126	105	122	128	152
	Females	71	65	64	53	40	46	56	56	44	43	59	59
	Total	255	229	192	173	154	157	178	182	149	165	187	211
2002:	Males	171	181	152	138	131	127	136	128	125	121	142	149
	Females	73	85	72	60	52	57	66	67	64	74	77	86
	Total	244	266	224	198	183	184	202	195	189	195	219	235
2003:	Males	165	182	196	167	172	188	227	264	207	228	249	249
	Females	98	102	97	82	64	85	105	105	94	101	85	78
	Total	263	284	293	249	236	273	332	369	301	329	334	327
2004:	Males	289	303	269	266	270	226	241	274	275	287	317	349
	Females	97	113	107	97	94	89	110	116	103	136	135	138
	Total	386	416	376	363	364	315	351	390	378	423	452	487
2005	Males	394	408	386	405	392	366	406	379	399	404	426	431
	Females	149	144	156	156	164	151	176	190	178	159	163	160
	Total	543	552	542	561	556	517	582	569	577	563	589	591
2006	Males	448	454	430	389	362	358	394	394	370	385	378	389
	Females	174	192	185	174	183	186	208	206	201	219	190	188
	Total	622	646	615	563	545	544	602	600	571	604	568	577
2007	Males	372	389	345	393	347	364	395	410	373	391	375	387
	Females	214	227	207	231	222	230	219	223	220	220	187	184
	Total	586	616	552	624	569	594	614	633	593	611	562	571

Source: Department of Health and Social Security, Employment Section

3.5 NUMBER REGISTERED UNEMPLOYED 1998-2007



3.6 SEASONAL VARIATION IN NUMBER REGISTERED UNEMPLOYED 1998-2007



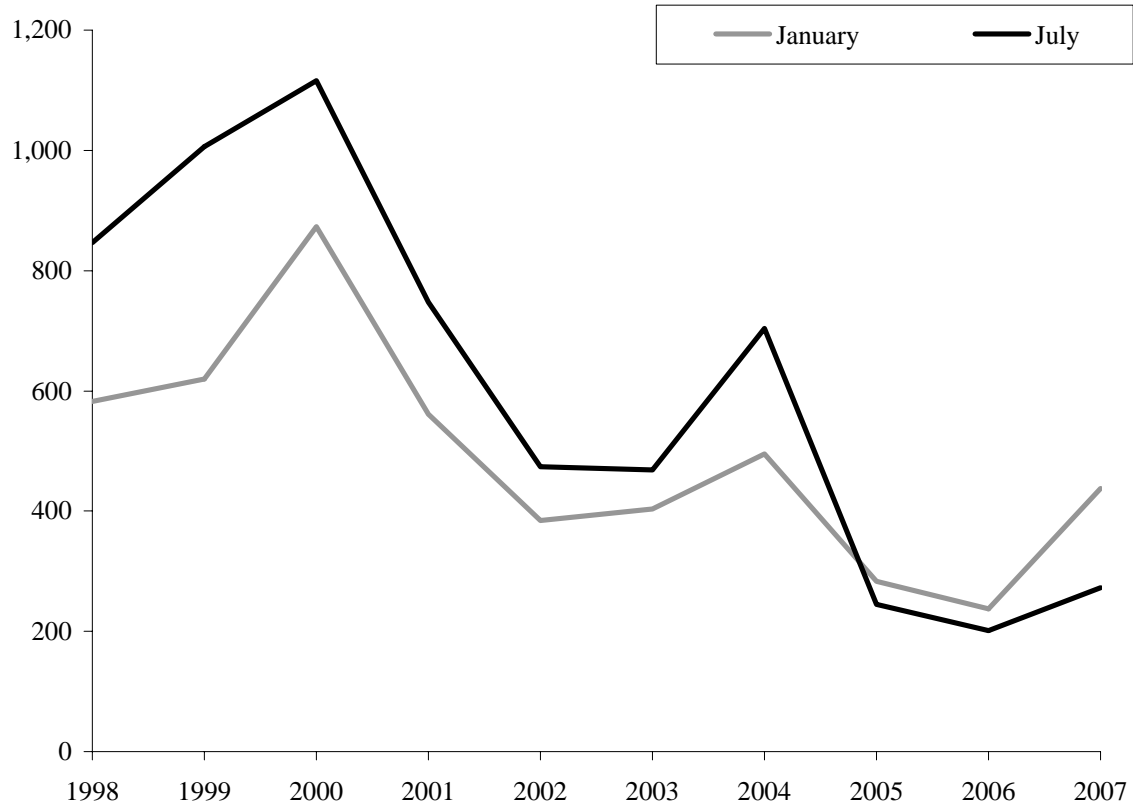
3.7 JOB VACANCIES 1998 - 2007

	January	July
1998	582	847
1999	620	1,006
2000	873	1,116
2001	561	747
2002	384	474
2003	404	468
2004	495	704
2005	283	245
2006	237	201
2007	438	273

Note: Vacancies recorded at the end of the month.

Source: Department of Trade and Industry, Employment Division.

3.8 SEASONAL VARIATIONS IN JOB VACANCIES 1998 - 2007



Source: Department of Trade and Industry, Employment Division.

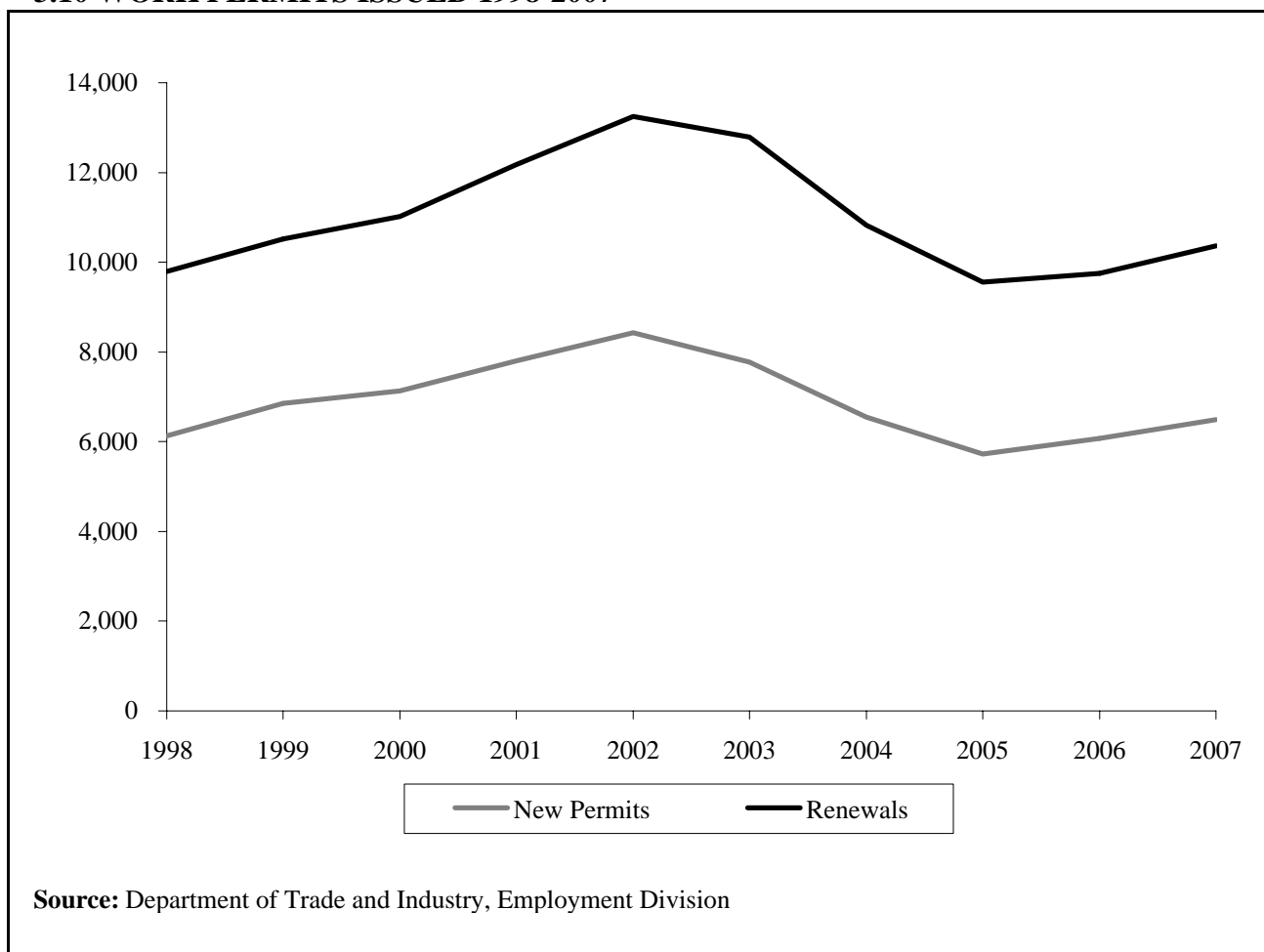
3.9 WORK PERMITS ISSUED BY TYPE 1998-2007

Type	1998	1999	2000	2001	2002	2003	2004	2005	2006	2007
New Permits	6,124	6,853	7,137	7,807	8,421	7,774	6,541	5,732	6,075	6,494
Renewals	3,663	3,665	3,879	4,363	4,821	5,008	4,283	3,828	3,677	3,865
Indefinite Permits	291	197	157	147	354	381	270	151	212	119
Temporary Permits	9,496	10,321	10,859	12,023	12,888	12,401	10,554	9,409	9,540	10,240
Employed Permits	9,304	10,005	10,511	11,680	12,749	12,202	10,336	9,093	9,229	9,808
Self-Employed Permi	483	513	505	490	493	580	488	467	523	551
Male Permits	5,628	6,155	6,569	7,486	8,349	8,290	6,640	5,859	6,022	6,479
Female Permits	4,159	4,363	4,447	4,684	4,893	4,492	4,184	3,701	3,730	3,880
Spouse Automatic	1,064	1,048	547	371	249	172	122	140	178	112
Total	9,787	10,518	11,016	12,170	13,242	12,782	10,824	9,560	9,752	10,359

Notes:(i) Definition of Permit Types:-
 - Renewals: repeat permits issued in respect of same employment (i.e. new permit required if change of job);
 - Indefinite: permit of 5 years' duration;
 - Temporary: permit of less than 5 years' duration;
 - Spouse Automatic: permits granted by virtue of spouse already holding permit (i.e. automatic entitlement).
 (ii) The figures refer to the number of jobs for which permits have been issued. There may be some double counting as temporary permits may be renewed several times in a year.

Source: Department of Trade and Industry, Employment Division.

3.10 WORK PERMITS ISSUED 1998-2007



3.11 STRIKES AND LOCKOUTS, NUMBER BY ECONOMIC ACTIVITY 1998-2007

	1998	1999	2000	2001	2002	2003	2004	2005	2006	2007
A Agriculture, hunting and forestry	0	0	0	0	0	0	0	0	0	0
B Fishing	0	0	0	0	0	0	0	0	0	0
C Mining and quarrying	0	0	0	0	0	0	0	0	0	0
D Manufacturing	0	0	0	0	0	0	0	0	0	0
E Electricity, gas and water supply	0	0	0	0	0	0	0	0	0	0
F Construction	0	1	0	0	0	0	0	0	0	0
G Wholesale and retail trade, repairs.	0	0	0	0	0	0	0	0	0	0
H Hotels and restaurants	0	0	0	0	0	0	0	0	0	0
I Transport, storage and communications	0	0	0	0	0	0	0	0	0	0
J Financial intermediation	0	0	0	0	0	0	0	0	0	0
K Real estate, renting and business activities	0	0	0	0	0	0	0	0	0	0
L Public administration	0	0	0	0	0	0	0	0	0	0
M Education	0	0	0	0	0	0	0	0	0	0
N Health and social work	0	0	0	0	0	0	0	0	0	0
O Other community, social and personal services	0	0	0	0	0	0	0	0	0	0
Total	0	1	0	0	0	0	0	0	0	0

Note: (i) The International Labour Office's International Standard Industrial Classification has been used.
(ii) 120 workers were involved in the strike that took place in 1999 and as a result 480 working days were lost.

Source: Industrial Relations Service

3.12 OCCUPATIONAL INJURIES 1998-2007

	1998	1999	2000	2001	2002	2003	2004	2005	2006	2007
Cases of fatal injury	0	0	2	2	0	0	0	1	0	0
Serious injuries	37	43	48	46	29	77	17	16	11	21
Over 3 day injuries	96	132	111	96	136	134	142	130	163	159
Dangerous occurrences	12	7	7	8	26	20	16	9	12	18
Disease	0	0	0	0	2	0	0	1	1	1

Note: An 'Over 3 day injury' is an injury resulting in the worker being unfit for work for more than three days.

Source: Health and Safety at Work Inspectorate, Department of Local Government and the Environment

4. PRICES AND EARNINGS

4.1 RETAIL PRICE INDEX 1978-2007

	Jan	Feb	Mar	Apr	May	Jun	Jul	Aug	Sep	Oct	Nov	Dec	Ave
1978	123.5	124.9	125.5	127.3	128.3	129.3	130.1	129.8	131.0	132.1	132.5	133.2	129.0
1979	134.5	135.8	137.5	139.3	141.4	143.4	151.9	153.1	154.5	155.7	157.1	158.2	146.9
1980	160.3	163.6	166.5	171.1	173.0	175.1	176.8	177.4	177.9	178.6	179.9	180.9	173.4
1981	181.8	183.8	186.0	191.9	194.3	195.6	196.4	197.5	199.5	200.6	203.6	204.3	194.6
1982	205.4	207.2	208.4	209.9	212.9	214.8	215.4	216.5	216.6	217.2	218.6	219.1	213.5
1983	219.1	220.0	221.3	222.9	223.9	225.3	226.9	226.6	227.4	227.9	229.1	229.6	225.0
1984	230.5	231.2	232.0	234.2	236.8	237.7	238.3	240.3	240.5	240.6	241.5	242.1	237.1
1985	244.4	246.6	249.0	251.7	252.5	253.9	253.1	252.6	253.3	252.9	254.4	254.7	251.6
1986	256.5	256.7	256.1	257.1	258.0	258.7	258.2	258.6	258.8	258.9	260.4	261.9	258.3
1987	263.2	264.7	265.4	266.7	268.9	269.6	270.7	271.7	272.7	272.4	273.7	274.4	269.5
1988	275.7	276.5	277.9	280.7	282.3	283.1	283.1	283.5	284.8	284.5	286.2	288.7	282.3
1989	291.7	293.2	295.0	298.2	300.2	302.4	303.7	304.5	306.1	306.8	308.0	310.8	301.7
1990	314.7	316.7	319.1	323.8	326.2	327.8	328.9	332.1	333.8	336.8	337.3	339.1	328.0
1991	340.8	342.9	344.2	350.0	351.4	352.0	355.4	356.5	356.8	358.7	359.3	359.5	352.3
1992	360.3	361.8	363.0	364.7	367.7	368.8	369.7	369.5	370.2	369.7	371.3	371.0	367.3
1993	372.5	371.2	372.1	374.8	374.4	375.2	375.8	377.0	378.3	379.0	379.0	379.1	375.7
1994	380.3	381.2	381.2	385.6	385.7	386.4	387.1	387.6	387.9	387.5	387.3	387.6	385.5
1995	390.0	391.0	392.9	394.0	397.1	398.0	397.8	398.8	399.3	399.5	399.8	399.7	396.5
1996	402.1	402.4	405.1	406.4	408.8	409.0	410.2	410.0	409.5	410.9	411.5	413.4	408.3
1997	413.6	413.7	414.5	415.7	415.6	415.6	416.9	417.5	420.4	421.1	422.6	424.0	417.6
1998	425.1	426.2	426.3	428.1	429.2	430.3	430.5	430.2	430.4	430.8	432.5	432.3	429.3
1999	432.1	432.5	434.4	437.4	437.0	437.4	439.0	438.9	440.3	440.1	440.3	441.9	437.6
2000	442.3												
January 2000 Base = 100													
2000	100.0	100.4	100.8	101.4	101.4	101.6	101.8	102.1	102.8	102.7	102.7	102.5	101.7
2001	102.7	102.8	103.2	104.2	104.2	104.1	103.7	103.6	104.0	103.1	102.9	102.8	103.4
2002	103.5	103.8	104.7	105.7	105.7	105.8	106.2	106.6	106.7	107.0	107.0	107.0	105.8
2003	107.3	108.0	108.5	108.4	108.5	108.7	109.4	109.7	109.9	110.2	110.3	110.4	109.1
2004	111.0	111.8	112.2	114	114.6	114.7	114.6	115.3	116.5	116.7	117.3	117.5	114.7
2005	117.7	117.7	118.1	118.9	118.8	119.3	119.6	119.8	120.2	120.9	121.3	121.4	119.5
2006	121.6	121.5	121.7	122.3	122.7	122.8	123.0	123.4	124.1	124.1	124.6	125.2	123.1
2007	125.7	126.1	126.3	127.2	127.8	128.1	128.0	128.4	128.9	129.1	129.6	130.2	128.0

Source: Treasury, Economic Affairs Division.

4.2 ANNUAL RATE OF INFLATION 1978-2007

	Jan	Feb	Mar	Apr	May	Jun	Jul	Aug	Sep	Oct	Nov	Dec	Ave
1978	11.0	10.6	10.0	9.6	9.1	9.3	8.9	8.7	8.9	8.5	8.0	8.2	9.2
1979	8.9	8.7	9.6	9.4	10.2	10.9	16.8	18.0	17.9	17.9	18.6	18.8	13.8
1980	19.2	20.5	21.1	22.8	22.3	22.1	16.4	15.9	15.1	14.7	14.5	14.3	18.3
1981	13.4	12.3	11.7	12.2	12.3	11.7	11.1	11.3	12.1	12.3	13.2	12.9	12.2
1982	13.0	12.7	12.0	9.4	9.6	9.8	9.7	9.6	8.6	8.3	7.4	7.2	9.8
1983	6.7	6.2	6.2	6.2	5.2	4.9	5.3	4.7	5.0	4.9	4.8	4.8	5.4
1984	5.2	5.1	4.8	5.1	5.8	5.5	5.0	6.0	5.8	5.6	5.4	5.4	5.4
1985	6.0	6.7	7.3	7.5	6.6	6.8	6.2	5.1	5.3	5.1	5.3	5.2	6.1
1986	5.0	4.1	2.9	2.1	2.2	1.9	2.0	2.4	2.2	2.4	2.4	2.8	2.7
1987	2.6	3.1	3.6	3.7	4.2	4.2	4.8	5.1	5.4	5.2	5.1	4.8	4.3
1988	4.7	4.5	4.7	5.2	5.0	5.0	4.6	4.3	4.4	4.4	4.6	5.2	4.7
1989	5.8	6.0	6.2	6.2	6.3	6.8	7.3	7.4	7.5	7.8	7.6	7.7	6.9
1990	7.9	8.0	8.2	8.6	8.7	8.4	8.3	9.1	9.0	9.8	9.5	9.1	8.7
1991	8.3	8.3	7.9	8.1	7.7	7.4	8.1	7.3	6.9	6.5	6.5	6.0	7.4
1992	5.7	5.5	5.5	4.2	4.6	4.8	4.0	3.6	3.7	3.1	3.3	3.2	4.3
1993	3.4	2.6	2.5	2.8	1.8	1.7	1.6	2.0	2.2	2.5	2.1	2.2	2.3
1994	2.1	2.7	2.4	2.9	3.0	3.0	3.0	2.8	2.5	2.2	2.2	2.2	2.6
1995	2.6	2.6	3.1	2.2	3.0	3.0	2.8	2.9	2.9	3.1	3.2	3.1	2.9
1996	3.1	2.9	3.1	3.1	2.9	2.8	3.1	2.8	2.6	2.9	2.9	3.4	3.0
1997	2.9	2.8	2.3	2.3	1.7	1.6	1.6	1.8	2.7	2.5	2.7	2.6	2.3
1998	2.8	3.0	2.8	3.0	3.3	3.5	3.3	3.0	2.4	2.3	2.3	2.0	2.8
1999	1.6	1.5	1.9	2.2	1.8	1.7	2.0	2.0	2.3	2.2	1.8	2.2	1.9
2000	2.4	2.7	2.6	2.5	2.6	2.7	2.6	2.9	3.3	3.2	3.2	2.6	2.8
2001	2.7	2.4	2.4	2.7	2.8	2.5	1.9	1.5	1.2	0.4	0.2	0.3	1.8
2002	0.8	0.9	1.4	1.4	1.4	1.6	2.4	2.9	2.6	3.8	4.0	4.0	2.3
2003	3.7	4.0	3.6	2.6	2.7	2.8	3.0	2.9	3.0	3.0	3.1	3.2	3.1
2004	3.5	3.5	3.5	5.1	5.5	5.5	4.8	5.1	6.0	5.9	6.3	6.4	5.1
2005	5.9	5.3	5.3	4.3	3.7	4.0	4.4	3.9	3.2	3.6	3.4	3.3	4.2
2006	3.3	3.2	3.0	2.9	3.3	2.9	2.8	2.9	3.3	2.6	2.7	3.1	3.0
2007	3.4	3.7	3.8	4.0	4.2	4.4	4.1	4.1	3.9	4.1	4.0	4.0	4.0

Source: Treasury, Economic Affairs Division.

4.3 ANNUAL RATES OF INFLATION IN THE ISLE OF MAN AND THE UNITED KINGDOM 1988-2007



4.4 AVERAGE WEEKLY EARNINGS 1998 - 2007

**MALES & FEMALES, MANUAL & NON-MANUAL, FULL-TIME ADULT EMPLOYEES
ON ADULT RATES WHOSE PAY WAS NOT AFFECTED BY ABSENCE**

	Manual	Change	Non-Manual	Change	All	Change
	£	%	£	%	£	%
1998	283.88	2.1	402.07	5.6	366.84	4.5
1999	313.36	10.4	415.17	3.3	383.54	4.6
2000	308.42	-1.6	425.71	2.5	393.00	2.5
2001	319.52	3.6	452.01	6.2	419.10	6.6
2002	340.92	6.7	477.88	5.7	441.34	5.3
2003	382.08	12.1	505.69	5.8	473.28	7.2
2004	388.89	1.8	524.86	3.8	484.73	2.4
2005	407.95	4.9	524.06	-0.2	489.26	0.9
2006	417.76	2.4	583.53	11.3	536.33	9.6
2007	436.08	4.4	598.53	2.6	551.23	2.8

Note: The Earning Survey takes place in June.

Source: Treasury, Economic Affairs Division.

4.5 MEDIAN WEEKLY EARNINGS 1998-2007

**MALES & FEMALES, MANUAL & NON-MANUAL, FULL-TIME ADULT EMPLOYEES
ON ADULT RATES WHOSE PAY WAS NOT AFFECTED BY ABSENCE**

	Manual	Change	Non-Manual	Change	All	Change
	£	%	£	%	£	%
1998	252.36	-2.6	340.15	2.5	312.17	4.1
1999	279.29	10.7	361.19	6.2	334.33	7.1
2000	281.60	0.8	365.39	1.2	335.75	0.4
2001	285.00	1.2	392.75	7.5	360.68	7.4
2002	312.10	9.5	413.50	5.3	375.81	4.2
2003	345.75	10.8	418.25	1.1	394.31	4.9
2004	359.39	3.9	457.00	9.3	419.50	6.4
2005	373.94	4.0	446.83	-2.2	418.27	-0.3
2006	385.28	3.0	498.92	11.7	457.42	9.4
2007	401.71	4.3	526.78	5.6	480.69	5.1

Note: (i) The median is the level of earnings such that half the sample have earnings greater than that level.

(ii) The Earning Survey takes place in June.

Source: Treasury, Economic Affairs Division.

4.6 DISTRIBUTION OF WEEKLY EARNINGS 1998-2007

MALES & FEMALES, MANUAL & NON-MANUAL, FULL-TIME ADULT EMPLOYEES

ON ADULT RATES WHOSE PAY WAS NOT AFFECTED BY ABSENCE

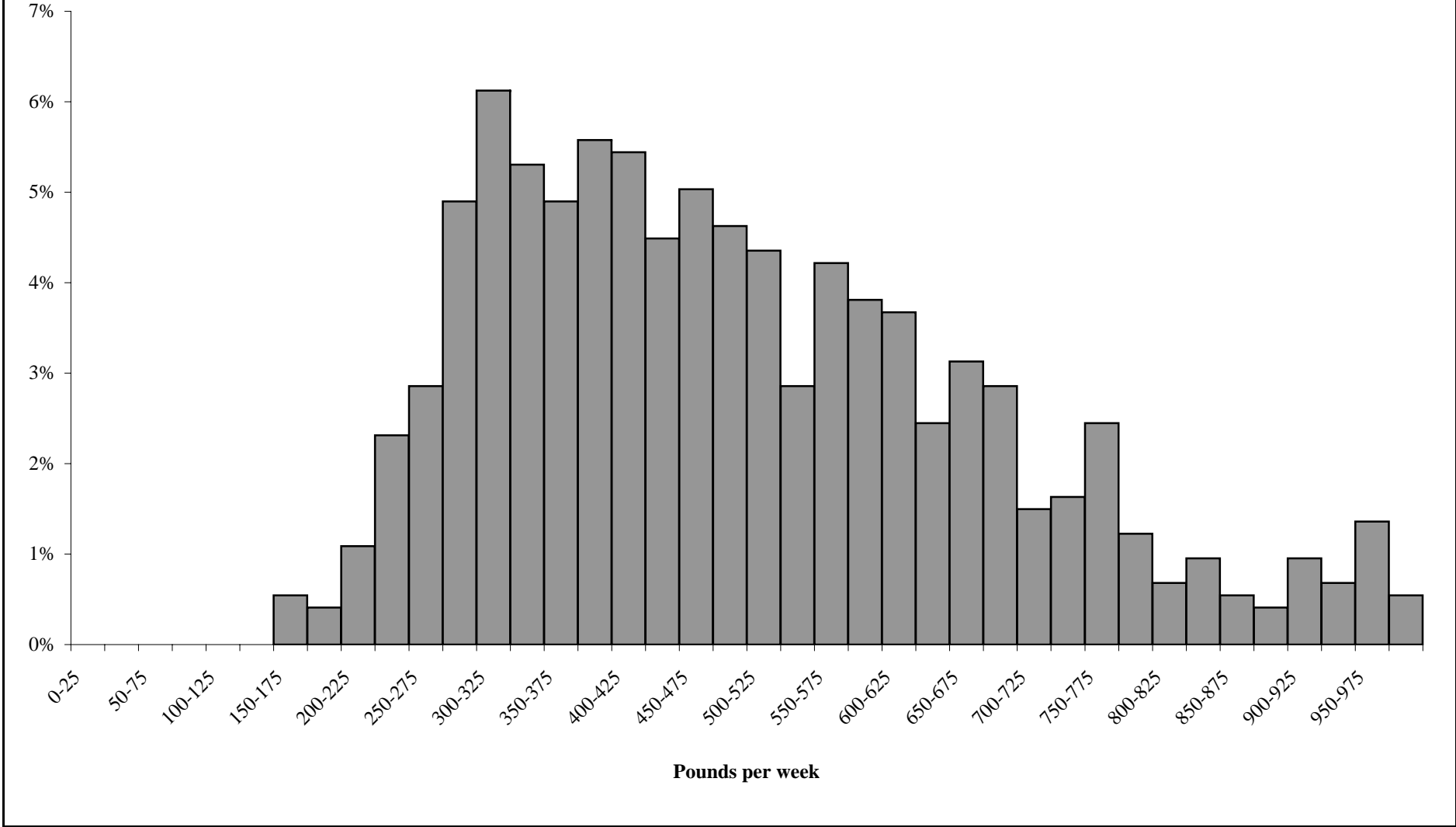
	£ per week					
	Average	10% below	25% below	Median	25% above	10% above
1998	366.84	195.20	239.85	312.17	432.00	607.14
1999	383.54	200.00	245.66	334.33	453.51	625.54
2000	393.00	203.57	254.81	335.75	467.48	623.51
2001	419.10	219.00	267.04	360.68	497.07	665.36
2002	441.34	232.15	285.00	375.81	528.92	706.93
2003	473.28	245.00	304.23	394.31	565.39	787.43
2004	484.73	260.93	324.00	419.50	576.93	769.23
2005	489.26	259.62	333.22	418.27	575.20	756.93
2006	536.33	271.39	346.16	457.42	649.65	894.23
2007	551.23	289.89	355.84	480.69	650.00	884.62

Note: The Earning Survey takes place in June.

Source: Treasury, Economic Affairs Division

4.7 DISTRIBUTION OF EARNINGS 2007

Distribution of earnings of full-time employees on adult rates whose pay for the survey period was not affected by absence - June 2007



5. FINANCE AND COMMERCE

**5.1 EMPLOYMENT IN FINANCE (FULL-TIME & PART-TIME) BY
SEX 2006**

Activity	Male	Female	Total
Insurance	933	1,072	2,005
Banking	1,343	2,029	3,372
Other Financial Institutions	742	891	1,633
Property Owning and Management	623	449	1,072
Other Business Services	668	645	1,313
Total	4,309	5,086	9,395
Note:	Figures collected in the 2006 Census of the Isle of Man population.		
Source:	Treasury, Economic Affairs Division.		

**5.2 EMPLOYMENT IN FINANCE (FULL-TIME AND PART-TIME) BY
SEX AS A PERCENTAGE OF EMPLOYED POPULATION 2006**

	Male	Female	Total
Employed in Finance Sector	4,309	5,086	9,395
Employed Population	22,020	18,763	40,783
Percentage Employed in Finance	19.6	27.1	23.0
Note:	Figures collected in the 2006 Census of the Isle of Man population.		
Source:	Treasury, Economic Affairs Division.		

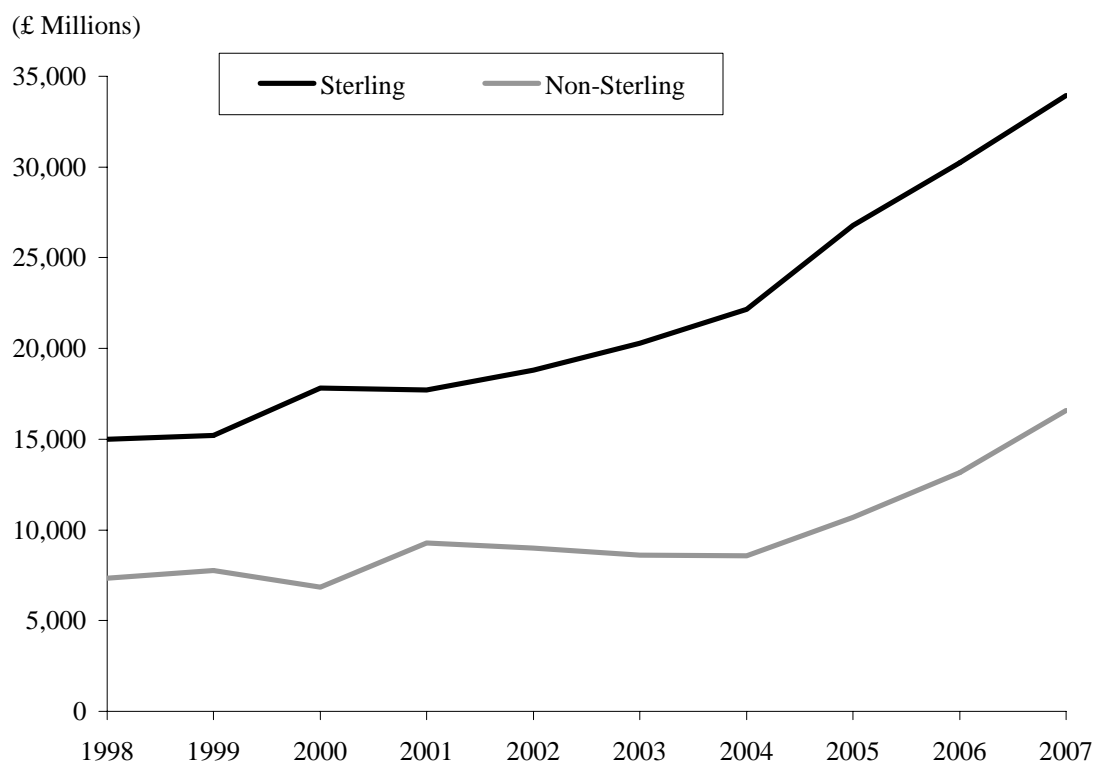
5.3 DEPOSIT BASE 1998-2007

	Sterling £ Millions	Non-Sterling £ Millions	Total £ Millions
1998	14,980	7,330	22,310
1999	15,200	7,760	22,960
2000	17,830	6,860	24,690
2001	17,720	9,270	26,990
2002	18,790	9,010	27,800
2003	20,290	8,620	28,910
2004	22,140	8,560	30,700
2005	26,780	10,700	37,480
2006	30,230	13,160	43,390
2007	33,950	16,590	50,540

Note: The figures relate to 31st December.

Source: Financial Supervision Commission.

5.4 DEPOSIT BASE 1998-2007



Source: Financial Supervision Commission.

5.5 COLLECTIVE INVESTMENT SCHEMES AND FUNDS UNDER MANAGEMENT 1998-2007

	Authorised		International		Experienced Investor Fund		Professional Investor Fund		Total	
	Value (£'000s)	Schemes	Value (£'000s)	Schemes	Value (£'000s)	Schemes	Value (£'000s)	Schemes	Value (£'000s)	Schemes
1998	1,007,032	16	5,090,614	86			6,423	1	6,097,646	103
1999	1,131,677	16	5,724,426	76			12,702	2	6,868,805	94
2000	1,180,463	16	2,202,934	21	484,298	23	102,322	11	3,806,453	71
2001	1,053,311	13	1,829,552	21	1,003,258	62	114,914	17	4,124,052	93
2002	852,314	12	1,476,882	22	1,822,362	91	167,973	10	4,319,531	112
2003	828,529	10	1,505,518	24	2,051,714	119	118,187	6	4,503,948	145
2004	571,327	9	1,668,604	23	3,641,804	130	130,258	5	6,011,993	167
2005	607,277	9	2,169,485	23	4,454,041	142	129,615	5	7,360,418	179
2006	575,810	10	2,414,868	21	5,052,273	133	266,538	8	8,309,489	172
2007	670,907	9	2,288,086	21	5,899,068	140	325,872	9	9,183,932	179

Note: Figures up to 1999 relate to the 30th June. From 2000 onwards figures relate to 31st December.

Source: Financial Supervision Commission

5.6 AUTHORISED INSURERS 1998-2007

	Life	Captive	General	Reinsurance	Composite	Mutual	Total
1998	15	163	6	6	1	2	193
1999	15	162	9	8	1	2	197
2000	15	156	9	7	1	0	188
2001	15	149	9	7	1	0	181
2002	15	145	12	8	1	0	181
2003	18	146	13	10	0	1	188
2004	19	141	16	15	0	1	192
2005	20	131	17	14	0	1	183
2006	18	127	17	15	0	1	178
2007	17	122	18	14	0	1	172

Note: Figures up to 2003 relate to the 30th June. From 2004 onwards figures relate to 31st December.

Source: Insurance and Pensions Authority

5.7 COMPANY REGISTRATIONS UNDER THE 1931 ACT 1998-2007

	New Companies Formed During Year	Companies Removed From Register During Year	Total Companies Registered at End of Year
1998	5,091	4,612	42,555
1999	4,239	7,266	39,603
2000	3,295	1,282	41,747
2001	2,958	6,907	37,912
2002	2,805	4,723	36,074
2003	2,470	5,266	33,351
2004	2,593	3,288	32,726
2005	2,677	4,532	30,847
2006	3,465	3,469	30,870
2007	2,830	3,302	30,380

Source: Financial Supervision Commission

6. MANUFACTURING

6.1 GOVERNMENT FINANCIAL ASSISTANCE PAID TO MANUFACTURING INDUSTRY 2002/03-2006/07

		Manufacturing Sector					Annual
		Food and Drink	Engineering	Textiles,Clothing, Footwear	Printing/Media	Other	Total
		£	£	£		£	£
2002/03	Grants	283,771	1,054,458	79,772	214,049	530,166	2,162,216
	Loans	0	0	0	0	0	0
	Purchase and Erection of Buildings	129,632	0	0	295,707	1,523	426,863
	Total	413,404	1,054,458	79,772	509,756	531,689	2,589,079
2003/04	Grants	349,034	1,827,949	91,336	123,432	199,779	2,591,529
	Loans	0	0	0	0	0	0
	Purchase and Erection of Buildings	167,321	51,806	0	19,323	37,326	275,776
	Total	516,355	1,879,755	91,336	142,754	237,105	2,867,305
2004/05	Grants	661,634	2,337,112	94,044	55,788	539,426	3,688,005
	Loans	0	0	0	0	0	0
	Purchase and Erection of Buildings	152,429	137,766	0	32,800	173,508	496,504
	Total	814,064	2,474,878	94,044	88,588	712,935	4,184,509
2005/06	Grants	259,192	2,190,476	0	12,215	309,062	2,770,945
	Loans	0	0	0	0	0	0
	Purchase and Erection of Buildings	95,936	210,287	0	0	97,167	403,390
	Total	355,128	2,400,763	0	12,215	406,229	3,174,335
2006/07	Grants	246,238	2,355,223	0	137,526	158,243	2,897,229
	Loans	0	0	0	0	0	0
	Purchase and Erection of Buildings	13,019	190,428	0	0	2,723	206,169
	Total	259,257	2,545,651	0	137,526	160,966	3,103,398

Source: Department of Trade and Industry.

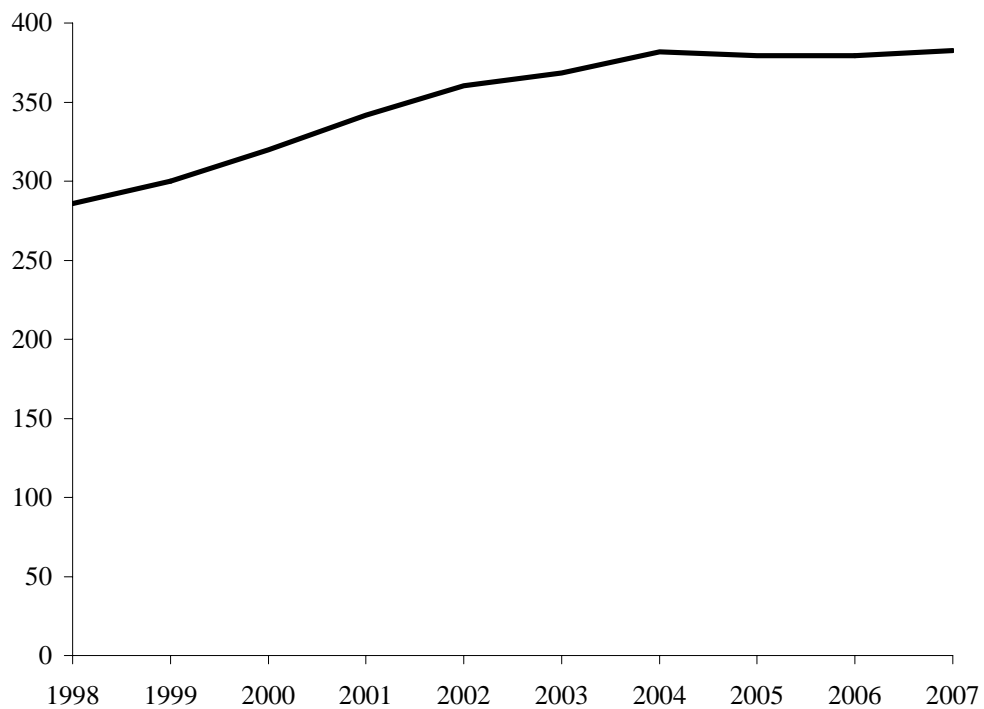
6.2 SALES OF ELECTRICITY 1998-2007

	Units Sold (GWh)
1998	285.9
1999	300.1
2000	319.8
2001	341.5
2002	360.4
2003	368.6
2004	381.6
2005	379.2
2006	379.2
2007	382.7

Note: Sales during the year to 31st December
1GWh = 1 million kilowatt hours

Source: Manx Electricity Authority

6.3 SALES OF ELECTRICITY (GWh) 1998-2007



Source: Manx Electricity Authority

7. TOURISM AND PASSENGER ARRIVALS

7.1 DESIGNATORS WITH STAR RATING AND BED SPACES 2002 - 2007

	2002	2003	2004	2005	2006	2007
Hotel						
5 Star	0	0	0	0	0	0
4 Star	376	676	672	641	650	638
3 Star	1145	895	986	952	930	921
2 Star	982	966	696	1015	965	688
1 Star	134	0	94	96	100	100
Pending	223	0	310	0	0	135
Totals	2,860	2,537	2,758	2,704	2,645	2,482
B & B						
5 Star	0	0	0	0	0	12
4 Star	0	0	0	0	0	102
3 Star	0	0	0	0	0	41
2 Star	0	0	0	0	0	30
1 Star	0	0	0	0	0	4
Pending	0	0	0	0	0	0
Totals	0	0	0	0	0	189
Guest House						
5 Star	0	0	0	0	0	40
4 Star	0	0	0	0	0	178
3 Star	0	0	0	0	0	501
2 Star	0	0	0	0	0	110
1 Star	0	0	0	0	0	25
Pending	0	0	0	0	0	0
Totals	0	0	0	0	0	854
Guest Accommodation						
5 Star	96	56	72	74	66	14
4 Star	268	354	383	410	428	178
3 Star	1401	1391	1273	1306	1026	442
2 Star	681	412	414	299	306	219
1 Star	167	224	161	159	133	45
Pending	52	364	70	19	22	16
Totals	2,665	2,801	2,373	2,267	1,981	914

	2002	2003	2004	2005	2006	2007
Farmhouse						
5 Star	0	0	0	0	0	2
4 Star	0	0	0	0	0	27
3 Star	0	0	0	0	0	4
2 Star	0	0	0	0	0	0
1 Star	0	0	0	0	0	0
Pending	0	0	0	0	0	0
Totals	0	0	0	0	0	33
Inn						
5 Star	0	0	0	0	0	0
4 Star	0	0	0	0	0	48
3 Star	0	0	0	0	0	20
2 Star	0	0	0	0	0	6
1 Star	0	0	0	0	0	0
Pending	0	0	0	0	0	0
Totals	0	0	0	0	0	74
Self Catering						
5 Star	N/A	41	58	73	109	93
4 Star	N/A	432	418	538	589	669
3 Star	N/A	678	723	671	653	604
2 Star	N/A	183	107	102	126	150
1 Star	N/A	20	16	10	12	16
Pending	N/A	10	14	8	8	23
Totals	1,412(i)	1,364	1,336	1,402	1,497	1,555

Total Bed spaces **6,937** **6,702** **6,467** **6,373** **6,123** **6,101**

Source: Department of Tourism and Leisure, Registration and Grading Commission

Note: (i) This figure refers to bed spaces under the former Keys Grading Classification

7.2 PASSENGER ARRIVALS BY MODE OF TRAVEL 1998-2007

	1998			1999			2000			2001			2002		
	Air	Sea	Total	Air	Sea	Total	Air	Sea	Total	Air	Sea	Total	Air	Sea	Total
January	20,965	5,757	26,722	21,626	6,089	27,715	22,716	7,378	30,094	24,110	8,373	32,483	24,137	9,285	33,422
February	22,455	7,673	30,128	23,199	8,227	31,426	25,191	8,973	34,164	24,918	9,880	34,798	25,546	9,660	35,206
March	26,819	11,105	37,924	26,960	12,540	39,500	28,251	12,579	40,830	26,939	12,956	39,895	30,679	20,526	51,205
April	31,361	19,772	51,133	28,030	25,649	53,679	29,393	28,277	57,670	29,325	26,772	56,097	28,097	24,835	52,932
May	33,711	25,289	59,000	29,615	29,093	58,708	31,006	32,829	63,835	29,758	27,271	57,029	33,391	45,702	79,093
June	36,144	44,614	80,758	32,101	46,081	78,182	33,950	50,817	84,767	30,715	29,747	60,462	33,116	39,926	73,042
July	33,291	36,277	69,568	32,536	39,086	71,622	32,120	38,817	70,937	33,308	38,261	71,569	33,005	42,436	75,441
August	36,152	47,687	83,839	33,618	53,349	86,967	33,632	51,917	85,549	34,462	50,967	85,429	35,029	54,931	89,960
September	31,203	25,423	56,626	29,509	26,061	55,570	30,309	28,646	58,955	30,306	26,618	56,924	30,883	29,781	60,664
October	30,811	14,567	45,378	30,763	17,324	48,087	31,930	20,151	52,081	29,844	19,541	49,385	30,200	20,076	50,276
November	26,453	9,052	35,505	27,078	9,609	36,687	27,672	9,103	36,775	28,540	13,694	42,234	29,776	13,845	43,621
December	26,353	9,820	36,173	26,795	10,298	37,093	28,406	10,945	39,351	27,444	13,798	41,242	28,505	13,964	42,469
Total	355,718	257,036	612,754	341,830	283,406	625,236	354,576	300,432	655,008	349,669	277,878	627,547	362,364	324,967	687,331
	2003			2004			2005			2006			2007		
	Air	Sea	Total	Air	Sea	Total	Air	Sea	Total	Air	Sea	Total	Air	Sea	Total
January	24,479	9,647	34,126	26,690	8,613	35,303	26,248	8,590	34,838	26,500	8,893	35,393	26,750	9,260	36,010
February	26,133	11,754	37,887	27,839	11,557	39,396	28,904	10,471	39,375	27,636	10,906	38,542	26,042	11,462	37,504
March	29,034	15,949	44,983	29,238	15,463	44,701	32,977	18,770	51,747	31,194	12,849	44,043	30,750	14,623	45,373
April	30,806	32,241	63,047	30,121	31,642	61,763	32,912	21,428	54,340	33,027	27,897	60,924	29,956	27,111	57,067
May	46,024	33,763	79,787	30,320	30,712	61,032	35,287	30,655	65,942	34,121	27,373	61,494	35,653	43,355	79,008
June	32,780	37,662	70,442	35,470	52,508	87,978	39,389	43,145	82,534	37,763	38,912	76,675	36,463	40,198	76,661
July	34,110	41,761	75,871	35,780	43,009	78,789	36,041	40,779	76,820	35,315	39,845	75,160	33,416	41,904	75,320
August	37,031	54,164	91,195	37,719	51,882	89,601	37,471	50,947	88,418	36,581	48,878	85,459	33,874	52,412	86,286
September	31,888	27,051	58,939	34,414	26,757	61,171	35,114	28,724	63,838	34,730	25,983	60,713	32,319	29,830	62,149
October	32,859	21,575	54,434	35,327	21,391	56,718	35,512	20,425	55,937	32,964	19,773	52,737	32,219	20,907	53,126
November	29,681	13,300	42,981	31,163	10,582	41,745	30,154	10,604	40,758	33,080	14,041	47,121	32,675	13,509	46,184
December	29,565	14,067	43,632	31,651	13,282	44,933	32,254	13,412	45,666	30,538	13,065	43,603	31,436	13,466	44,902
Total	384,390	312,934	697,324	385,732	317,398	703,130	402,263	297,950	700,213	393,449	288,415	681,864	381,553	318,037	699,590

Source: Treasury, Economic Affairs Division.

7.3 SCHEDULED PASSENGER DEPARTURES BY CATEGORY 1998 -2007

	1998	1999	2000	2001	2002
Period Visitors Staying In Paid Accommodation	163,114	157,322	152,847	95,948	113,978
Period Visitors Staying With Friends and Relatives	94,438	102,170	96,920	105,345	117,165
Isle of Man Residents	244,793	263,406	301,204	329,388	346,519
Business People	76,751	74,620	79,814	76,311	87,536
Day Trippers	10,163	7,521	9,859	9,459	8,081
Total	589,259	605,039	640,644	616,451	673,279
	2003	2004	2005	2006	2007
Period Visitors Staying In Paid Accommodation	114,207	120,270	115,107	109,753	125,858
Period Visitors Staying With Friends and Relatives	127,814	120,688	110,619	109,347	121,952
Isle of Man Residents	346,145	343,552	360,261	364,661	363,873
Business People	88,385	92,658	88,651	82,276	72,947
Day Trippers	7,012	7,286	6,614	5,214	3,380
Total	683,563	684,454	681,252	671,251	688,010

Notes: (i) Scheduled departures exclude cruise passengers, visiting yachtsmen and some charter flights.

(ii) Prior to 1998, figures were based on passenger arrivals and from 1998 onwards the figures are calculated using passenger departures.

Source: Treasury, Economic Affairs Division.

**7.4 PERIOD VISITORS STAYING IN PAID ACCOMMODATION:
AVERAGE LENGTH OF STAY AND EXPENDITURE PER HEAD 1998-2007**

	Number of Nights	Expenditure per head (£)	Average Expenditure per head per day (£)
1998	5.2	311	59.71
1999	5.3	356	67.17
2000	4.9	321	65.51
2001	4.8	329	68.54
2002	5.2	352	67.69
2003	5.0	355	71.00
2004	5.3	380	71.70
2005	4.9	408	82.93
2006	4.8	417	86.88
2007	5.6	415	74.11

Note: Expenditure refers to all period visitors staying in paid accommodation.
Source: Treasury, Economic Affairs Division.

**7.5 PERIOD VISITORS STAYING IN PAID ACCOMMODATION
BY AREA OF RESIDENCE 2007**

	Number	%
N.E. England	2,947	2.3
Yorkshire/Humberside	10,868	8.6
N.W. England	37,034	29.4
Midlands	22,106	17.6
East Anglia	3,868	3.1
S.E. England	12,574	10.0
S.W. England	6,080	4.8
Scotland	5,191	4.1
N. Ireland	5,996	4.8
Eire	5,799	4.6
Wales	3,418	2.7
Channel Islands	268	0.2
Other	9,710	7.7
Total	125,859	100

Note: Percentages have been rounded so the total may not equal 100.
Source: Treasury, Economic Affairs Division.

8. AGRICULTURE AND FISHERIES

8.1 AGRICULTURAL HOLDINGS BY SIZE 1998-2007

Size Of Holding	1998	1999	2000	2001	2002	2003	2004	2005	2006	2007
Under 20 acres	262	244	245	242	233	234	227	219	221	201
20 to 50 acres	116	121	120	126	122	122	118	117	108	87
50 to 100 acres	102	96	101	96	85	86	90	97	79	71
100 to 150 acres	73	77	69	72	67	56	57	53	56	66
150 to 200 acres	79	76	71	69	67	63	65	62	59	43
200 to 300 acres	66	73	66	64	65	65	62	65	49	56
300 acres and over	80	79	85	85	87	92	90	88	86	96
TOTAL	778	766	757	754	726	718	709	701	658	620

Note: Figures collected in Agricultural Census each June.

Source: Department of Agriculture, Fisheries and Forestry, Agriculture Division.

8.2 AGRICULTURAL LAND USE 1998-2007

Land Use	1998		1999		2000		2001		2002	
	Acreage	%	Acreage	%	Acreage	%	Acreage	%	Acreage	%
Cereals	10,870	10	10,742	9	11,008	10	10,452	9	10,647	10
Potatoes	395	0	408	0	389	0	380	0	357	0
Green Crops, Orchards and Miscellaneous	1,328	1	1,150	1	1,046	1	1,346	1	1,114	1
Hay and Grassland	65,187	58	65,890	58	66,365	58	66,172	58	65,639	58
Rough Grazing	35,718	32	35,313	31	34,808	31	36,154	32	34,732	31
Total Area of Agricultural Land	113,498	100	113,503	100	113,615	100	114,505	100	112,488	100
Land Use	2003		2004		2005		2006		2007	
	Acreage	%	Acreage	%	Acreage	%	Acreage	%	Acreage	%
Cereals	10,212	9	10,636	9	11,110	10	11,807	11	12,033	12
Potatoes	333	0	302	0	264	0	176	0	239	0
Green Crops, Orchards and Miscellaneous	1,151	1	1,182	1	966	1	765	1	982	1
Hay and Grassland	66,711	59	66,935	59	66,403	58	64,616	62	62,648	60
Rough Grazing	34,588	31	34,136	30	35,282	31	27,101	26	28,220	27
Total Area of Agricultural Land	112,996	100	113,191	100	114,024	100	104,466	100	104,122	100
Notes: (i) Percentages have been rounded so may not equal 100.										
(ii) Figures collected in Agricultural Census each June.										
Source: Department of Agriculture, Fisheries and Forestry, Agriculture Division.										

8.3 AGRICULTURAL AND HORTICULTURAL WORKFORCE 1998-2007

	Regular Workers	Casual Workers	All Workers
1998	213	106	319
1999	201	112	313
2000	178	100	278
2001	162	83	245
2002	154	98	252
2003	151	77	228
2004	145	75	220
2005	142	74	216
2006	159	65	224
2007	148	69	217

Notes: Figures collected in Agricultural Census each June.

Source: Department of Agriculture, Fisheries and Forestry, Agriculture Division.

8.4 CATTLE AND SHEEP 1998-2007

	1998	1999	2000	2001	2002	2003	2004	2005	2006	2007
Dairy Cows & Heifers										
Cows & Heifers that have calved	6,880	6,915	7,110	6,780	6,525	5,989	5,807	5,669	5,530	5,378
Replacement Heifers in first calf	1,464	1,489	1,534	1,451	1,577	1,260	1,117	1,043	990	1,027
Heifers over 1yr to be put to bull						814	643	634	651	564
Beef Cows & Heifers										
Cows & Heifers that have calved	6,270	6,616	6,651	6,738	7,160	7,744	8,223	8,539	9,179	9,834
Replacement Heifers in first calf	746	758	795	947	787	892	929	1,012	990	879
Heifers over 1yr to be put to bull						1,231	1,356	1,486	1,410	1,257
Bulls	289	313	337	311	348	387	397	509	452	472
Other Cattle										
1 year and over:										
Heifers for finishing or sale									3,344	3,767
Young Bulls for finishing or sale									989	943
Steers for finishing or sale									2,435	2,452
Cattle 2 years old and over	1,555	1,881	1,925	1,966	1,874					
Cattle 1 to 2 years	7,226	7,860	7,380	7,059	6,986					
Under 1 year:										
Cattle under 1 year									9,463	10,361
Steers/Bulls	4,400	3,829	3,815	3,880	3,940					
Female	5,146	5,028	5,051	4,763	4,714					
Replacement dairy calves						1,266	1,088	1,208		
Replacement beef calves						1,325	1,963	1,621		
TOTAL	33,976	34,689	34,598	33,895	33,911	20,908	21,523	21,721	35,433	36,934
Sheep										
Ewes retained for breeding this season	67,231	69,030	70,985	68,654	68,880	64,855	60,593	59,278	59,815	59,638
Replacement Shearling ewes (for tugging this year)	2,543	14,293	12,069	11,667	10,856	11,528	10,960	11,612	11,830	11,769
Rams kept for service	16,536	2,579	2,715	2,586	2,545	2,649	2,368	2,464	2,349	2,412
Replacement ram lambs	528	569	372	442	614	1,112	754	706	1,014	793
Replacement ewe lambs						11,429	10,398	13,017	11,283	12,101
Other Sheep and Lambs	86,949	91,766	89,673	85,211	88,041				50,460	59,151
TOTAL	173,787	178,237	175,814	168,560	170,936	91,573	85,073	87,077	136,751	145,864
Notes: (i) Figures collected in Agricultural Census each June.										
(ii) From 2003 there has been a reclassification of the livestock.										
Source: Department of Agriculture, Fisheries and Forestry, Agriculture Divison.										

8.5 PIGS AND POULTRY 1998-2007

	1998	1999	2000	2001	2002	2003	2004	2005	2006	2007
PIGS										
Sows/Gilts in pig or kept for breeding	1,061	988	704	542	671	710	770	603	570	533
Boars used for service	92	71	61	44	58	50	47	31	31	32
Other pigs:										
Over 5 months										
2 - 5 months	2,918	2,678	1,815	1,624	1,174					
Under 2 months	2,557	2,269	1,647	843	1,275					
TOTAL	6,628	6,006	4,227	3,053	3,178	760	817	634	601	565
POULTRY										
Pullets from point of lay to completion of first moult	7,198	2,813	5,747	4,957	5,228					
Hens after completion of first moult	5,984	9,253	4,659	4,548	4,823					
Growing pullets (to point of lay)	5,225	2,860	2,373	1,961	1,192					
Battery hens						4,825	5,896	6,615	4,500	3,572
Free-range hens						7,808	8,430	12,456	15,167	15,750
Other hens						199	545	643	502	139
TOTAL	18,407	14,926	12,779	11,466	11,243	12,832	14,871	19,714	20,169	19,461
Notes: (i) Figures collected in Agricultural Census each June.										
(ii) Data relating to the categories Pigs, '2-5 months' and 'Under 2 months' and the first three categories under Poultry ceased to be collected in 2003.										
Source: Department of Agriculture, Fisheries and Forestry, Agriculture Division.										

8.6 WEIGHT AND VALUE OF FISH LANDED BY SPECIES 1998-2007

	QUEENIES		SCALLOPS		NEPHROPS		LOBSTER		CRAB		WHITE FISH	
	Landed Weight	Value £	Landed Weight	Value £	Landed Weight	Value £	Landed Weight	Value £	Landed Weight	Value £	Landed Weight	Value £
1997	1,630	440,999	933	1,224,809	24	40,830					183	244,257
1998	991	296,234	706	922,864	16	29,218					199	271,956
1999	1,255	435,271	794	1,181,459	10	19,413	14		234		70	96,631
2000	2,275	403,904	965	1,617,030	3	6,004	18		237		188	101,701
2001	1,749	582,040	1,116	1,553,618	2	4,376	30		286		13	12,892
2002	1,824	764,410	1,093	1,544,006	0	0	28		438		6	6,826
2003	422	144,106	1,105	1,381,572	0	0	27		352		0	0
2004	859	449,022	1,106	1,741,614	13	28,999	29	266,592	415	323,842	20	18,549
2005	1,133	622,949	1,016	1,472,859	12	40,373	43	336,890	333	316,347	29	43,870
2006	n.a	803,205	1,522	1,505,919	4	6,771	32.4	328,618	402	372,656	25	36,792
2007	2,035	n.a	1,201	n.a	0	n.a	41	330,094	246	295,450	24	n.a

Note:

- (i) This table deals with those species of major commercial importance.
- (ii) The Landed weight is given in tonnes.
- (iii) Crab and Lobster Landed Weight figures are available from 1999, however the values are not available prior to 2004.

Source: Department of Agriculture, Fisheries and Forestry, Fisheries Division.

9. HEALTH

9.1 HEALTH SERVICE EXPENDITURE 1997/98-2006/07

Hospital and specialist services	1997/98	1998/99	1999/00	2000/01	2001/02
	£	£	£	£	£
Hospital maintenance	31,983,497	35,998,917	35,931,039	36,797,162	38,879,688
Specialists' remuneration	3,914,814	5,075,393	5,678,654	5,970,836	7,021,252
Miscellaneous hospital services	428,844	469,796	373,933	448,275	540,848
Equipment, building, extensions, etc., financed otherwise than by borrowing	588,076	474,696	456,842	553,669	819,539
Interest and sinking fund charges on loans for major capital works	3,667,411	3,470,246	4,333,549	5,657,187	7,851,022
Services under part III of Health Service Act (i)	6,217,889	6,847,343	7,627,450	8,780,439	9,535,012
General medical services	3,861,325	4,004,142	4,462,449	4,658,188	5,116,230
Pharmaceutical services	9,306,709	9,892,766	10,739,418	11,598,475	12,575,904
General dental services	2,045,809	2,136,522	2,273,155	2,303,479	2,949,168
Supplementary ophthalmic services	598,374	608,228	624,503	634,086	641,954
Post-graduate Medical Centre	99,639	124,091	131,292	134,134	157,777
Administration (ii)	842,750	473,123	3,592,071	3,802,099	4,441,637
Occupational Health Policy					
Total cost	63,555,137	69,575,263	76,224,355	81,338,029	90,530,031
Hospital and specialist services	2002/03	2003/04	2004/05	2005/06	2006/07
	£	£	£	£	
Hospital maintenance	40,682,043	44,608,158	37,548,721	42,596,070	44,615,011
Specialists' remuneration	8,256,274	8,793,647	11,203,128	12,235,039	13,378,587
Miscellaneous hospital services	536,487	398,669	432,286	559,168	492,627
Equipment, building, extensions, etc., financed otherwise than by borrowing	906,103	525,210	196,906	291,818	201,731
Interest and sinking fund charges on loans for major capital works	9,259,832	11,798,670	13,619,618	10,415,951	10,184,465
Services under part III of Health Service Act (i)	10,317,022	11,037,778	13,168,216	15,640,434	14,944,138
General medical services	6,320,482	6,947,350	8,058,368	8,679,233	9,025,455
Pharmaceutical services	13,978,387	15,303,619	17,007,454	17,646,893	18,784,839
General dental services	2,680,425	2,434,637	1,643,394	1,620,945	2,040,697
Supplementary ophthalmic services	675,725	676,244	756,920	767,717	808,522
Post-graduate Medical Centre	144,854	250,819	229,456	199,002	27,972
Administration (ii)	5,281,995	4,794,296	1,655,681	4,263,451	-36,000
Personnel Unit (iii)	352,570	371,470	-15	0	6,125,691
Total cost	99,392,199	107,940,567	105,520,133	114,915,721	120,593,735

Notes: (i) These services appear in table 9.2.
(ii) From 1997/98 the Administration expenditure includes expenditure related to Occupational Health and Policy.
(iii) From 2002/03 Personnel Unit expenditure has been separated out from Administration expenditure.

Source: Department of Health and Social Security, Central Services Division, Finance Section.

9.2 EMPLOYMENT IN HOSPITAL MEDICAL SERVICES 2003/04-2007/08

Specialty / Grade	2003/04		2004/05		2005/06		2006/07		2007/08	
	Estimates	Actual	Estimates	Actual	Estimates	Actual	Estimates	Actual	Estimates	Actual
Surgical Directorate										
Consultant	6.0	6.0	6.0				6.0	6.0	6.0	7.0
Associate Specialist	2.0	2.0	2.0				3.0	3.0	3.0	3.0
Staff Grade	2.0	2.0	2.0				3.0	3.0	3.0	3.0
Clinical Assistant	0.0	0.0	0.0				0.0	0.0	0.0	0.1
Senior Doctors	4.0	4.0	4.0				6.0	6.0	6.0	6.1
Senior House Officer	2.0	2.0	2.0				3.0	1.0	3.0	3.0
House Officer	5.0	5.0	5.0				6.0	0.0	6.0	0.0
Speciality Trainees							0.0	2.0	0.0	2.0
Foundation Year 2										2.0
Foundation Year 1										6.0
Junior Doctors	7.0	7.0	7.0				9.0	3.0	9.0	13.0
Ortho-Trauma Directorate										
Consultant	4.0	4.0	4.0				4.0	5.0		5.0
Associate Specialist	2.0	2.0	2.0				2.0	1.0		2.0
Staff Grade	6.0	7.0	7.0				6.0	7.0		9.0
Clinical Fellow			0.0				1.0	1.0		0.0
Senior Doctors	8.0	9.0	9.0				9.0	9.0	0.0	11.0
Senior House Officer	2.0	2.0	2.0				3.0	0.0		4.0
Speciality Trainee 1							0.0	3.0		3.0
Foundation Year 2										5.0
Junior Doctors	2.0	2.0	2.0				3.0	3.0		12.0
Women's & Children's										
Consultant	6.0	6.0	6.0				6.0	7.0	6.0	7.0
Associate Specialist							0.0	1.0		1.3
Staff Grade	5.0	5.0	5.0				4.0	3.0		3.0
Senior Doctors	5.0	5.0	5.0				4.0	4.0	0.0	4.3
Clinical Assistant	0.3	0.3	0.3				0.3	0.3		0.0
Senior House Officer	6.0	6.0	6.0				2.0	2.0		8.0
Speciality Trainee 1										4.0
Foundation Year										2.0
Junior Doctors	6.3	6.3	6.3				2.3	2.3	0.0	14.0
Medical-Elderly										
Consultant	6.0	6.0	6.0				7.0	7.0		7.0
Associate Specialist							0.0	1.0		1.0
Staff Grade	4.0	4.0	4.0				4.0	3.0		6.0
Hospital Practitioner	0.5	0.5	0.0				0.4	0.0		0.5
Clinical Assistant	0.5	0.5	0.0				0.0			0.1

9.2 Continued

Senior Doctors	5.0	5.0	4.0	4.4	4.0	0.0	7.6
Senior House Officer	5.0	5.0		4.0	0.0		3.0
House Officer	5.0	5.0		6.0	0.0		1.0
Speciality Trainee 2				0.0	6.0		6.0
Foundation Training 1				0.0	6.0		6.0
Foundation Training 2				12.0	12.0		1.0
Junior Doctors	10.0	10.0	0.0	22.0	24.0	0.0	17.0
Critical Care							
Consultant	6.0	5.0	5.0	5.0	6.0		6.0
Staff Grade	1.0	1.0	1.0	1.0	3.0		7.0
Associate Specialist	0.6	0.6					0.0
Senior House Officer	4.0	4.0	4.0	4.0	2.0		0.0
Out-Patient Directorate							
Ophthalmology							
Consultant	2.0	2.0	2.0	2.0	2.0		2.0
Associate Specialist	1.0	1.0	1.0	1.0	1.0		1.0
Clinical Assistant	0.6	0.6	0.6	0.6	0.6		0.0
Dermatology							
Visiting Consultant	0.2	0.2	0.2	0.5	0.5		0.5
Clinical Assistant	0.3	0.3	0.3	0.0	0.0		0.0
Orthodontics							
Staff Grade	0.9	0.9	1.0	1.0	1.0		1.0
Clinical Assistant	0.1	0.1		0.0			0.0
Visiting Consultant	0.2	0.2	0.2	0.2	0.2		0.0
Hospital Practitioner	0.2	0.2	0.2	0.0	0.0		0.0
RADIOLOGY							
Consultant	5.0	5.0	5.0	5.0	5.0	5.0	5.2
PATHOLOGY							
Consultant	2.0	2.0	2.0	2.0	2.0		2.0
Clinical Assistant	0.0	0.0	0.4	0.4	1.4		0.6
Staff Grade	1.0	1.0	0.0	0.0	0.0		0.0
Associate Specialist (GUM)	0.5	0.5	0.5	0.5	0.5		0.5
MENTAL HEALTH							
Consultant	5.0	5.0	5.0	5.0	5.0	5.0	6.0
Associate Specialist	4.4	4.4	4.4	4.4	4.4	4.0	5.0
Foundation Year 2							2.0
TOTAL	104.3	104.3	92.1	115.3	114.9	118.1	149.8
Note: 2004/05 actual and 2005/06 figures are not available.							
Source: Department of Health and Social Security, Medical Staffing							

9.3 EMPLOYMENT IN PROFESSIONAL MEDICAL SERVICES 1998-2007

	General Practitioners		Dentists		Opticians Practices		District Nurses ⁽ⁱ⁾		Health Visitors ⁽ⁱ⁾		Chiropodists		Speech Therapists ^(c)		Total Staff ⁽ⁱⁱ⁾		Pharmacies	
	Full-Time	Part-Time	Full-Time NHS	Full-Time Self-employed	Part-Time	Full-Time	Part-Time	Full-Time	Part-Time	Full-Time	Part-Time	Full-Time	Part-Time	Full-Time	Part-Time			
1998	38	4		26	0	8	0	28	5	20	3	6	0	3	2	129	14	25
1999	39	4		26	0	8	0	26	7	23	1	6	0	3	2	131	14	25
2000	39	5		26	0	8	0	27	9	25	5	7	0	5	2	137	21	24
2001	40	5		26	0	8	0	26	10	25	8	7	0	5	2	137	25	24
2002	41	5	1	26	0	9	0	28	10	24	8	6	2	6	1	140	26	24
2003	41	5	4	26	0	9	0	28	10	22	12	7	1	6	1	139	29	24
2004	41	5	15	24	2	9	0	26	15	21	15	6	2	6	1	133	40	24
2005	41	7	15	24	2	9	0	24	30	21	14	6	2	3	4	128	59	24
2006	41	7	18	24	2	10	0	21	33	23	15	7	1	4	4	130	62	24
2007	41	9	20	19	0	10	0											24

Notes: (i) Domiciliary staff only.

(ii) General Practitioners, Ophthalmic Opticians and Private Dentists are all self-employed.

(iii) All figures recorded at 31st March.

(iv) From 2002 onwards Full Time Dentists have been split into NHS and self employed contract with DHSS.

(v) Some figures for 2007 are not available.

Source: Department of Health and Social Security, Health Services Division, Community Services Section.

9.4 GENERAL PRACTITIONERS AND PATIENTS 1998-2007

	Number of general practitioners	Number of patients on lists	Average number of patients per practitioner	Number of elderly patients
1998	42	76,653	1,825	13,175
1999	42	77,628	1,848	13,056
2000	42.5	78,895	1,856	13,053
2001	43.5	79,899	1,837	13,045
2002	43.5	80,439	1,849	13,108
2003	43.75	80,657	1,844	13,282
2004	43.75	80,272	1,835	13,260
2005	44.75	82,038	1,833	13,486
2006	44.75	82,771	1,850	13,447
2007	45.75	83,987	1,836	13,709

Notes: (i) For the purpose of this table, the term "elderly patients" refers to males and females aged 65 years and over.

(ii) The number of General Practitioners refers to full time equivalents.

(iii) The above figures relate to 31st March.

Source: Department of Health and Social Security, Health Services Division,
Family Practitioner Services Section

10. SOCIAL SECURITY

10.1 INCOME SUPPORT: PENSIONS AND ALLOWANCES 1998-2007

Year ending 31st March	Retirement Pension	Sick (i)	Lone parents and widows under pension age without children (ii)	Persons required to register for work	Others	Total
1998	2,191	743	498	351	72	3,855
1999	2,088	762	430	216	66	3,562
2000	1,949	877	333	144	58	3,361
2001	1,914	878	344	103	48	3,287
2002	1,635	831	358	133	44	3,001
2003	1,541	794	331	183	50	2,899
2004	1,524	753	330	274	37	2,918
2005	1,504	741	308	416	26	2,995
2006	1,494	918	390	455	35	3,292
2007	1,523	888	396	388	43	3,238

Notes:

(i) The category 'Sick' includes 'Blind' and 'Handicapped'.

(ii) Male lone parents, previously recorded under 'Others', were added to 'Lone parents and widows under pension age without children' category from 1998 onwards.

Source:

Department of Health and Social Security, Social Security Division.

10.2 SOCIAL SECURITY BENEFITS BY TYPE 1998-2007

Type of Benefit/Pension	1998	1999	2000	2001	2002	2003	2004	2005	2006	2007
Retirement Pension	15,185	15,203	15,246	15,298	15,301	15,461	15,674	15,914	16,167	16,498
Old Person's Pension (Over 80's)	87	79	76	68	68	68	72	69	67	65
Age Addition (ii)	(3,568)	(3,459)	(3,622)	(3,542)	(3,541)	(3,553)	(3,590)	(3,666)	(3,688)	(3,714)
Retirement Pension Premium (ii)	(5,381)	(5,307)	(5,065)	(4,861)	(4,756)	(4,598)	(4,415)	(4,257)	(4,109)	(3,932)
Pension Supplement (ii)	(11,507)	(11,480)	(11,451)	(11,609)	(11,620)	(11,765)	(11,925)	(12,066)	(12,261)	(11,442)
Child Benefit - Families	8,895	9,078	9,111	9,282	9,379	9,393	9,401	9,493	9,590	9,859
- No. of children (iii)	(15,451)	(15,790)	(15,895)	(16,101)	(16,303)	(16,316)	(16,495)	(16,484)	(16,526)	(16,803)
One Parent Addition to Child Benefit	1,740	1,553	1,135	949	899	779	653	507	427	353
Guardian's Allowance	1	1	2	2	2	1	1	2	4	4
Jobseeker's Allowance Contribution Based	99	77	78	65	84	114	160	198	154	73
Jobseeker's Enhanced Allowance	40	37	40	36	45	52	70	68	64	30
Incapacity Benefit (Short Term)	656	476	674	579	327	348	562	296	66	311
Incapacity Benefit (Long Term)	1,273	1,259	1,260	1,272	1,260	1,280	1,336	1,326	1,373	1,390
Maternity Allowance	165	175	166	152	130	143	191	205	255	300
Paternity Allowance (iv)								8	13	15
Adoption Allowance (iv)								2	1	0
Widowed Mother's Allowance	81	79	79	73	66	58	46	38	31	25
Widow's Pension (v)	283	286	280	245	245	211	165	143	120	98
Widowed Father's Allowance	16	16	13	13						
Bereavement / Widowed Parent's Allowance (vi)					57	63	72	75	76	90
Attendance Allowance	1,245	1,286	1,328	1,238	1,247	1,278	1,276	1,314	1,312	1,253
Disability Living Allowance	1,397	1,543	1,628	1,751	1,764	1,859	1,956	1,989	2,041	2,035
Severe Disablement Allowance	255	256	264	254	251	234	227	219	210	196
Industrial Disablement Benefit	201	212	212	224	222	224	220	226	226	220
Reduced Earnings Allowance	48	49	51	52	52	47	45	44	43	41
Family Income Supplement	524	698	792	828	810	814	863	859	909	844
Invalid Care Allowance	212	218	229	246	245	271	302	289	262	245
Disability Working Allowance	20	17	23	20	18	20	15	24	32	28
Income Support - Pensions (vii)	2,103	1,954	1,924	1,654	1,635	1,541	1,524	1,504	1,494	1,523
Income Support - Allowance (vii)	1,285	1,184	1,278	1,245	1,233	1,175	1,120	1,075	1,343	1,327
Jobseeker's Allowance Income Based	242	155	106	110	133	183	274	416	455	388
Total Claims in Payment (vii)	34,273	34,301	34,820	34,671	34,529	34,786	35,502	35,728	36,244	36,828

Notes: (i) The figures relate to the end of the financial year.

(ii) These benefits are in addition to the Retirement Pension for those who qualify.

(iii) This shows the number of children not the number of claims for Child Benefit.

(iv) Paid to qualifying beneficiaries as an addition

(v) New benefits introduced in April 2004

(vi) Includes Widow's Industrial Injuries Death Benefit

(vii) Excludes Age Addition, Pension Premium, Pension Supplement, Child Benefit-No. of children, One Parent Addition and Jobseeker's Enhanced Allowance

Source: Department of Health and Social Security, Social Security Divisor

11. EDUCATION

11.1 PRIMARY AND SECONDARY STATE SCHOOL POPULATIONS BY AGE 1998-2007

Year	INFANTS				JUNIOR					SECONDARY					FURTHER			Overall Total	
	Under 5	5+	6+	Total under 7	7+	8+	9+	10+	Total 11-14+	11+	12+	13+	14+	15+	Total 11-15+	16+	17+		Total 16+
1998	955	891	915	2,761	910	917	885	891	3,603	886	841	833	801	806	4,167	333	293	626	11,157
1999	1,019	911	926	2,856	930	933	952	887	3,702	925	884	859	852	809	4,329	367	309	676	11,563
2000	991	901	915	2,807	936	958	939	969	3,802	903	928	910	868	857	4,466	370	330	700	11,775
2001	1,017	898	908	2,823	929	942	958	959	3,788	984	919	954	924	872	4,653	430	291	721	11,985
2002	1,079	859	910	2,848	912	941	960	969	3,782	954	981	921	966	919	4,741	426	348	774	12,145
2003	1,240	905	860	3,005	915	921	950	953	3,739	963	962	988	924	941	4,778	457	337	794	12,316
2004	1,135	951	914	3,000	859	921	915	958	3,653	958	960	964	994	912	4,788	463	353	816	12,257
2005	1,132	834	946	2,912	928	873	937	935	3,673	978	966	969	975	976	4,864	430	370	800	12,249
2006	1,266	799	844	2,909	953	930	881	937	3,701	921	982	978	962	963	4,806	484	377	861	12,277
2007	1,316	889	803	3,008	858	961	951	905	3,675	939	927	977	984	972	4,799	415	414	829	12,311

Note: (i) Details relate to the beginning of the Autumn Term.
(ii) From 2001 onwards Under 5 includes children in both nursery and reception.

Source: Department of Education.

11.2 ATTENDANCE AT ISLE OF MAN COLLEGE 1997/98-2005/06

Academic Year	Day release and vocational courses		Non-vocational afternoon and evening classes	Linked and sampler courses	Total
	Full time	Part time			
1997/98	633	4,152	4,565	80	9,430
1998/99	635	4,960	7,401	144	13,140
1999/00	637	5,039	4,222	226	10,124
2000/01	571	6,021	4,261	220	11,073
2001/02	626	5,591	4,451	184	10,852
2002/03	716	4,494	4,012	244	9,466
2003/04	735	4,276	2,932	357	8,300
2004/05	691	6,226	2,817	459	10,193
2005/06	781	3,640	2,692	493	7,606

Source: Isle of Man College

11.3 SUPPORT AWARDED TO STUDENTS 1997/98-2006/07

Academic Year	Number of grants to students from the Isle of Man on:			Total
	Courses leading to a degree or Higher National Diploma (inc Postgraduate Studies)	Courses leading to awards other than a Degree or Higher National Diploma	Courses leading to a teaching certificate (inc. PGCE)	
1997/98	847	171	64	1,082
1998/99	895	169	53	1,117
1999/00	886	180	66	1,132
2000/01	930	206	50	1,186
2001/02	1,005	175	42	1,222
2002/03	1,004	246	48	1,298
2003/04	1,109	235	39	1,383
2004/05	1,076	139	52	1,267
2005/06	1,204	162	64	1,430
2006/07	1,228	152	59	1,439

Source: Department of Education

11.4 EXAMINATION ACHIEVEMENTS 1998-2007

	1998	1999	2000	2001	2002	2003 (viii)	2004	2005	2006	2007
Secondary Schools										
Advanced Level GCE and advanced VCE	910	878	950	1,019	1,082	1,239	1,163	1,268	1,233	1,237
GCSE(i)	4,004	4,240	4,276	4,431	4,152	4,599	4,725	4,826	5,192	4,933
Isle of Man College										
Advanced Level GCE	108	147	140	260	186					
GCSE	178	204	171	143	167					
Academic Courses (1)										
GNVQ Foundation	-	15	1	-	-	Level 2	78	77	61	85
GNVQ Intermediate	49	26	29	29	18	Level 3	84	76	77	78
GNVQ Advanced	21	48	55	53	36	Level 4				
NVQ Level 1	22	54	68	53	53					
NVQ Level 2	71	59	99	81	113					
NVQ Level 3	10	17	118	57	77					
NVQ										
Ordinary National Certificate	7					Level 1	88	66	96	95
Ordinary National Diploma	8					Level 2	87	77	98	92
National Certificate/Diploma	-	10	15	16	29	Level 3	82	64	97	98
Higher National Certificate/Diploma	21	29	18	28	30	Level 4	60			
Royal Society of Arts	788	541	525	701	615					
First Cert/First Diploma	-									
Higher National Diploma	5					Vocational Courses (2)(vii)				
City & Guilds of London Institute (iii) & (v)	336	-	-	-	-	Entry Level	97	93		88
Institute of Admin Management	-					Level 1	84	90	87	83
Inst. of Chartered Sect. & Admin	59	19	35	-	-	Level 2	86	84	94	90
Chartered Institute of Bankers	43	29	14	-	-	Level 3	92	92	97	95
Association of Accounting Technicians	113	141	99	35	-	Level 4	83	87	78	86
Company & Trust Administrators	408	375	334	254	228					
Institute of Legal Executives	15	21	25	13	-					
Teeline	14	2	-	-	-	Craft Based Courses				
NWRAC/CENTRA (iii)	-					Level 1	79	100	81	90
International Ass. of Bookkeepers	22	26	-	18	20	Level 2	68	94	85	97
Diploma in Company & Trust Offshore Planning	37	4	-	-	-	Level 3	69	80	77	95
Financial Planning Certificate (vi)	93	**								
ABTAC Primary Certificate	11	7	-	-	-					
NEBS Management	30	nil	10	9	3	Professional and Managerial				
Further Education Teacher's Certificate	19	22	18	14	20	Level 1		94	84	91
Construction Industry Training Board (v)	140	-	-	-	-	Level 2	97	91	89	92
Institute of Environmental Health Officers	38	26	34	34	123	Level 3	70	87	92	86
Vocational Awards International	45	56	16	8	9	Level 4	100	100	100	100
Council for Awards in Children's Care and Education	24	9	9	19	24					
Post Graduate Certificate in Education	11	5	7	18	17					
Degree/Professional Qualifications	-	32	28	29	31					

- Notes:** (i) GCSE passes relate to Grades A* - C only. The above figures include 'Short Courses', equivalent to half of a GCSE, from 1998 onwards and intermediate GNVQ's.
(ii) City & Guilds qualifications may have a number of units attached to them. Above figures relate to the number of individual units passed.
(iii) Although exams are not run by the Department of Education, results are notified to the Department.
(iv) The above table only reflects achievements in those examinations where there were ten or more subject passes in 1998.
(v) From 1999 onwards the City & Guild and Construction Industry Training Board Individual units have been converted to NVQ subject passes.
(vi) Academic Courses include GCSE and GNVQ at Level 2, AS, A2 and AVCE at Level 3, HNC/D and Undergraduates at Level 4.
(vii) 'Vocational Courses' relates to all vocationally specific programmes EXCEPT NVQ (which are recorded separately).
(viii) From 2003 achievements are being grouped by category rather than specific qualifications.
(viii) Not all 2007 figures were available at the time of publication.

Source: Department of Education.

11.5 STUDENTS IN FURTHER AND HIGHER EDUCATION 1997/98-2006/07

Academic Year	Total Number of Students
1997/98	1,128
1998/99	1,037
1999/00	1,053
2000/01	1,088
2001/02	1,118
2002/03	1,162
2003/04	1,271
2004/05	1,379
2005/06	1,430
2006/07	1,439

Note: The above statistics relate to all students receiving support whether attending the Isle of Man College or institutions outside the Island.

Source: Department of Education.

11.6 ACADEMIC PERFORMANCE 1997/98-2006/07

Academic Year	Percentage of Students gaining 5 or more A* - C Grades at GCSE
1997/98	50
1998/99	54
1999/00	54
2000/01	58
2001/02	53
2002/03	56
2003/04	55
2004/05	59
2005/06	59
2006/07	57

Source: Department of Education.

12. HOUSING

12.1 DWELLINGS COMPLETED 1998-2007

	Private	Public	Annual Total
1998	234	77	311
1999	286	5	291
2000	270	131	401
2001	266	12	278
2002	527	96	623
2003	403	53	456
2004	421	187	608
2005	341	176	517
2006	190	86	276
2007	221	154	375

Source: Department of Local Government and the Environment, Housing Section.

Notes: (i) Private housing is all new housing excluding affordable housing.
(ii) Public housing is all affordable housing (including first time buyer and public rented housing).

12.2 PLANNING APPLICATIONS 1997/98-2006/07

Financial Year	Number of Applications Received	Number of Applications Approved	Number of Applications Refused	Number of Review Requests	Number of Appeal Requests
1997/98	2258	1852	338	382	152
1998/99	2297	1899	341	351	180
1999/00	2454	2008	352	400	174
2000/01	2486	2065	346	427	206
2001/02	2683	2219	375	472	240
2002/03	2637	2171	372	372	182
2003/04	2714	2274	401	436	210
2004/05	2676	2216	398	404	238
2005/06	2446	2006	379	357	265
2006/07	2318	1983	242	5	292

Source: Department of Local Government and the Environment, Planning Office.

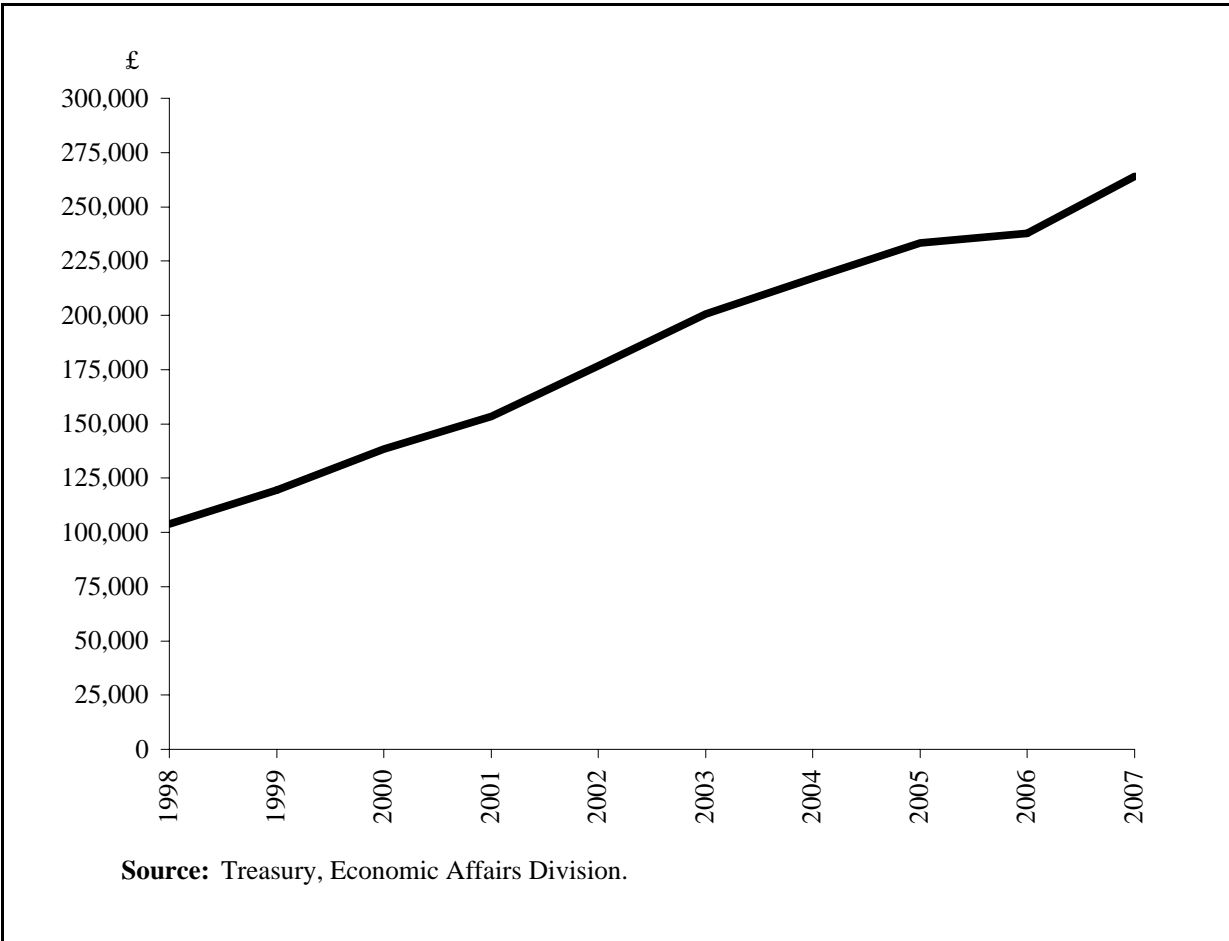
12.3 HOUSE PRICES 1998 - 2007

	Annual Average House Price (£)	Annual Median House Price (£)
1998	103,689	83,000
1999	119,422	98,650
2000	138,224	125,000
2001	153,522	139,850
2002	176,699	159,000
2003	200,520	182,500
2004	217,190	195,000
2005	233,200	205,500
2006	237,776	213,000
2007	264,112	240,000

Notes: (i) The median is the price level such that exactly half of the houses sold in that year were sold at a higher price.
(ii) 2007 figures are provisional.

Source: Treasury, Economic Affairs Division.

12.4 ANNUAL AVERAGE HOUSE PRICE 1998 - 2007



12.5 HOUSEHOLDS BY AREA OF RESIDENCE 1961-2006

	Number of Households						
	1961	1971	1981	1991	1996	2001	2006
Towns:							
Douglas	5,394	6,315	7,294	8,447	9,512	10,332	10,835
Ramsey	1,301	1,788	2,362	2,740	3,054	3,281	3,253
Peel	843	1,064	1,363	1,462	1,529	1,522	1,807
Castletown	577	931	1,141	1,237	1,225	1,284	1,291
Village Districts:							
Port Erin	383	569	1,132	1,240	1,369	1,478	1,577
Port St. Mary	471	551	640	710	788	803	848
Laxey	434	456	533	584	614	715	726
Onchan	1,341	1,930	3,028	3,349	3,532	3,680	3,882
Parish Districts:							
Andreas	258	282	406	455	482	481	575
Arbory	261	343	645	684	685	730	737
Ballaugh	204	191	286	346	362	387	439
Braddan	475	531	776	687	896	1,000	1,227
Bride	126	119	159	170	165	170	176
German	231	255	377	398	417	407	406
Jurby	170	177	198	234	229	243	241
Lezayre	472	423	539	622	439	471	500
Lonan	367	435	453	502	532	556	627
Malew	631	659	777	852	863	914	936
Marown	323	376	504	600	630	744	811
Maughold	297	281	313	349	361	383	393
Michael	259	309	354	454	470	556	670
Patrick	349	354	397	444	458	516	506
Rushen	348	456	525	588	599	630	651
Santon	114	132	146	162	166	238	276
Total	15,629	18,927	24,348	27,316	29,377	31,521	33,390
Note:	Figures collected in the Censuses of the Isle of Man population.						
Source:	Treasury, Economic Affairs Division.						

12.6 HOUSEHOLDS BY TENURE 2001

Tenure	Number of Households	Percentage of Total Households
Buying property (mortgage or loan)	10,952	35
Owning property outright	10,371	33
Renting from government or local authority	5,567	18
Renting from private landlord (furnished)	1,718	5
Renting from private landlord (unfurnished)	2,343	7
Renting from employer	292	1
Other	278	1
Total	31,521	100
Note:	Figures collected in the 2001 Census of the Isle of Man population.	
Source:	Treasury, Economic Affairs Division.	

13. TRANSPORT AND COMMUNICATIONS

13.1 AIR AND SEA ROUTES BY DISTANCE AND DURATION OF JOURNEY 2007

Distances by air from Ronaldsway Airport:-

	Miles	Average flight time (Minutes)
Belfast	62	30
Birmingham	162	60
Blackpool	68	30
Bristol	203	65
Cardiff	193	60
Dublin	79	30
Edinburgh	139	50
Glasgow	124	50
Jersey (via Blackpool)	352	135
Leeds/Bradford	122	55
Liverpool	88	30
London City	270	60
London Heathrow	251	60
Luton	234	70
Manchester	108	40
Newcastle	133	60
Southampton	257	110

Distances by sea from Douglas Harbour:-

Average sailing time

	Miles	Conventional Vessel	Fast Craft
Belfast	90	4 hrs 30 mins	2hrs 45 mins
Dublin	92	4 hrs 45 mins	2hrs 45 mins
Fleetwood	62	3 hrs 20 mins	2hrs 00 mins
Heysham	68	3 hrs 30 mins	2hrs 00 mins
Liverpool	83	4 hrs 00 mins	2hrs 30 mins

Note: Times may vary with different craft by either mode.

13.2 AIRCRAFT MOVEMENTS BY TYPE OF FLIGHT 1998-2007

Type of Flight Arriving and Departing from Ronaldsway Airport

	Scheduled	Charter	Private and Club	Training	Military	Official	Business
1998	21,218	4,524	10,745	1,765	218	6	381
1999	20,205	3,500	10,577	1,086	161	8	444
2000	22,045	4,042	8,508	924	112	4	298
2001	21,140	3,533	9,298	1,235	210	2	168
2002	22,935	3,890	10,799	1,046	177	0	78
2003	28,412	4,079	9,714	826	253	6	113
2004	31,021	4,341	7,206	1,229	265	4	86
2005	31,142	4,917	7,848	811	222	0	80
2006	31,231	4,089	12,230	445	127	0	83
2007	29,742	3,816	6,484	0	1	0	33

Note: 2007 figures are provisional.

Source: Department of Transport, Airports Division.

13.3 PASSENGER ARRIVALS ON SCHEDULED AIR SERVICES 1998-2007

	Number of Scheduled Services	Number of Scheduled Passenger Arrivals
1998	21,218	694,987
1999	20,205	670,117
2000	22,045	698,533
2001	21,140	688,958
2002	22,935	716,818
2003	28,412	735,254
2004	31,021	760,551
2005	31,142	800,604
2006	31,231	778,131
2007	29,742	750,437

Source: Department of Transport, Airports Division.

13.4 VOLUME OF PASSENGER TRAFFIC BY AIR 1998-2007

	Total Number of Passengers using Airport
1998	713,768
1999	685,552
2000	711,985
2001	701,980
2002	729,255
2003	748,103
2004	773,743
2005	806,656
2006	789,155
2007	764,440

Source: Department of Transport, Airports Division.

13.5 HARBOUR TRAFFIC: PASSENGERS, VEHICLES AND FREIGHT 1997/98 - 2006/07

	1997/98	1998/99	1999/00	2000/01	2001/02	2002/03	2003/04	2004/05	2005/06	2006/07
No. of Passengers	472,431	500,512	575,025	615,029	583,328	659,929	664,012	652,169	598,108	608,992
No. of Cars	93,685	105,140	} 150,044	161,203	136,511	173,523	175,388	173,133	170,069	172,271
No. of Motorcycles	36,804	36,861								
No. of Commercial Vehicles less than 6 metres in length	8,250	8,802	10,266	11,406	12,326	12,111	12,261	10,329	10,044	10,423
No. of Commercial Vehicles more than 6 metres in length	51,087	55,084	59,151	68,231	70,203	76,322	76,656	74,248	78,984	76,081
General Freight (tonnes)	107,556	100,011	107,060	95,022	108,971	119,001	123,636	91,480	97,636	82,360
Oil (tonnes)	155,965	162,272	168,855	159,032	109,939	133,435	108,264	109,937	111,684	100,219
Gas (tonnes)	21,668	23,909	20,279	23,217	24,139	22,790	14,275	7,806	8,568	8,283

Source: Department of Transport, Harbours Division.

13.6 NUMBER AND TYPE OF VESSELS REGISTERED IN THE ISLE OF MAN AND GROSS REGISTERED TONNAGE 1998-2007

	1998	1999	2000	2001	2002	2003	2004	2005	2006	2007
Merchant	231	219	215	242	246	272	299	324	316	302
Fishing	87	80	82	84	89	85	80	92	73	73
Pleasure Yachts	398	411	425	441	446	432	436	416	307	326
Commercial Yachts						6	15	29	47	56
Small Ship Register					75	81	83	92	104	105
Demise Charter Ships					62	61	59	71	82	74
Total	716	710	722	767	918	937	972	1024	929	936
Gross Registered Tonnage	4,738,834	5,251,973	5,155,200	5,383,336	5,835,174	6,640,743	7,341,047	8,623,071	9,191,984	9,174,059
Demise Charter Ships Registered in the Isle of Man but operating in other countries						13	17	23	25	29
Gross Tonnage Registered						176,270	324,534	452,531	525,043	665,454

Note: (i) Figures as at 31st December.

(ii) Five new categories were added in 2003, (Commercial Yachts, Small Ship Register, Demise Charter Ships and those operating in other countries and the Gross Tonnage Registered).

Source: Department of Trade and Industry, Marine Administration Division.

13.7 POSTAL TRAFFIC 1997/98-2007

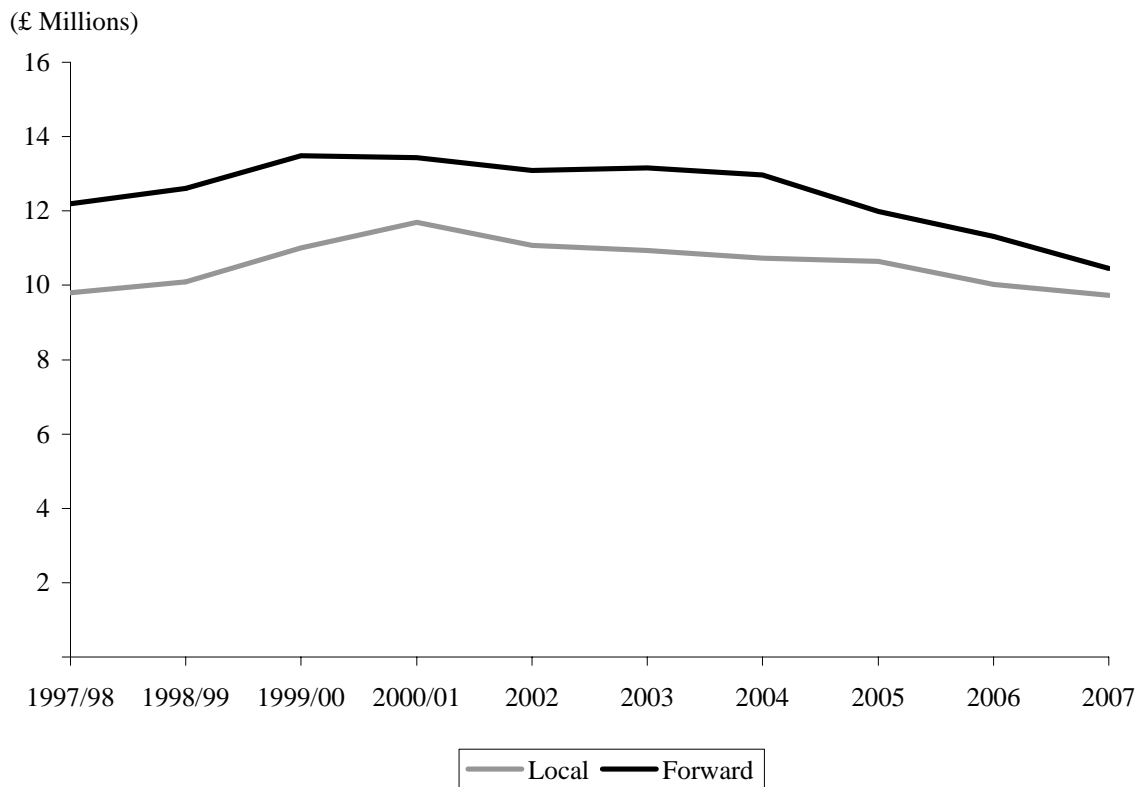
	1997/98	1998/99	1999/2000	2000/01	2002
	('000s)	('000s)	('000s)	('000s)	('000s)
Letters posted - Local	9,800	10,100	11,011	11,701	11,075
Letters posted - Forward	12,200	12,600	13,492	13,427	13,081
Letters Received	17,300	18,800	20,160	22,677	23,919
Parcels Despatched	49	47	50	57	39
Parcels Received	281	321	318	369	260
Datapost Despatched	11	9	9	7	
Datapost Received	39	47	50	60	

	2003	2004	2005	2006	2007
	('000s)	('000s)	('000s)	('000s)	('000s)
Letters posted - Local	10,942	10,729	10,652	10,025	9,729
Letters posted - Forward	13,162	12,961	11,982	11,320	10,454
Letters Received	24,764	25,868	23,805	24,135	25,578
Parcels Despatched	30	31	39	36	32
Parcels Received	164	149	330	377	344

Note : From 2002 onwards Datapost figures have been combined with parcels
The data shows calander year figures from 2002 onwards

Source: Isle of Man Post

13.8 LETTERS POSTED 1997/98-2007



Source: Isle of Man Post

14. CRIME AND ROAD ACCIDENTS

14.1 OFFENCES BY CATEGORY 1998-2007

	1998	1999	2000	2001	2002	2003	2004	2005	2006	2007
Offences Against The Person										
Crimes recorded	166	294	221	388	468	467	472	587	692	637
Crimes detected	145	196	148	213	264	226	325	408	561	497
Sexual Offences										
Crimes recorded	54	78	51	62	46	32	66	63	65	65
Crimes detected	47	61	35	31	18	5	33	26	31	55
Burglary Offences										
Crimes recorded	442	533	401	449	354	397	278	270	240	176
Crimes detected	101	113	81	80	60	59	83	74	100	70
Theft Offences										
Crimes recorded	1,416	1,462	1,257	1,731	1,636	1,338	1,209	1,150	1,213	988
Crimes detected	581	491	296	375	349	258	361	394	487	338
Criminal Damage and Arson										
Crimes recorded	1,109	1,343	1,440	1,534	1,548	1,414	1,185	1,314	1,641	1,342
Crimes detected	304	246	232	254	264	193	250	254	490	427
Robbery										
Crimes recorded	14	13	8	15	11	6	6	7	7	8
Crimes detected	8	6	3	3	2	2	3	3	3	3
Fraud and Forgery										
Crimes recorded	338	224	185	230	114	90	111	95	121	80
Crimes detected	314	169	152	145	54	42	75	54	86	57
Other Offences										
Crimes recorded	500	917	688	550	548	375	468	558	926	696
Crimes detected	410	761	543	485	488	301	401	537	855	653

Note: (i) Figures from 2002 onwards record Common Assault as an Offence Against the Person.

Public Order Offences are classed as Other Offences.

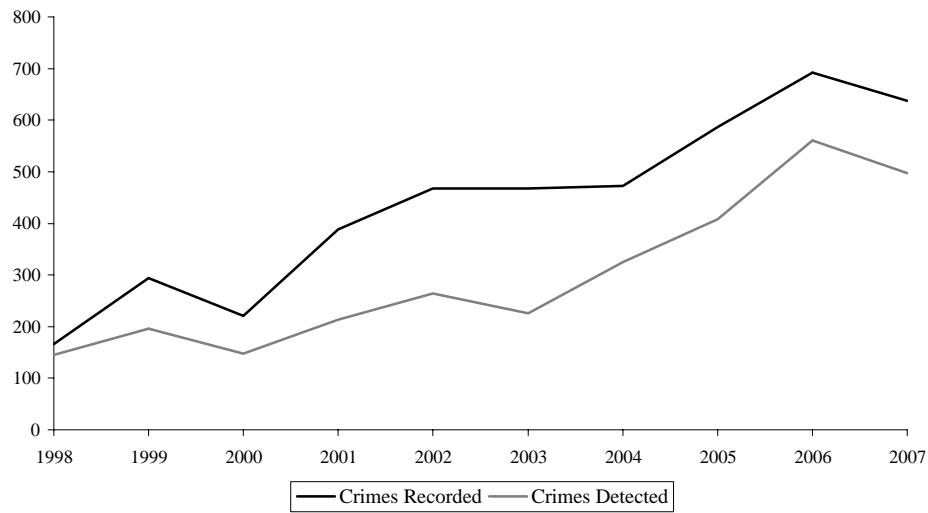
(ii) 2003 figures onward recalculated on date recorded, and date detected for ascribing relevant year.

(ii) 2007 Figures are provisional.

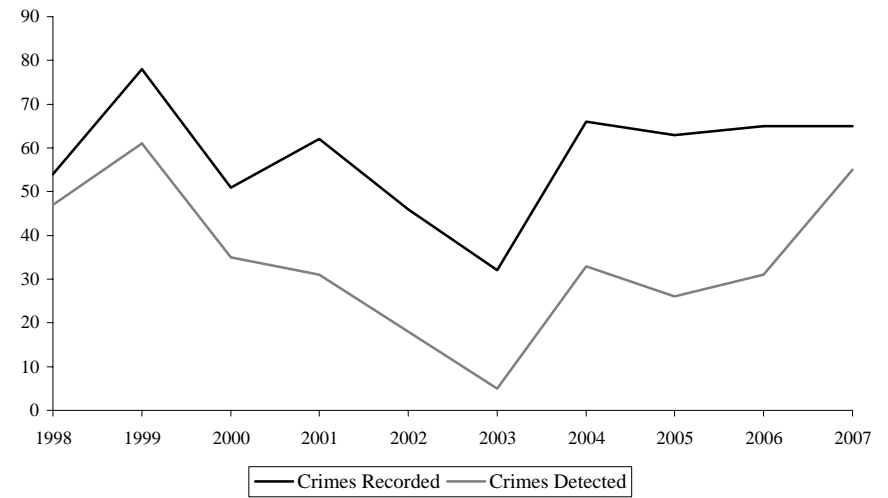
Source: Isle of Man Constabulary

14.2 OFFENCES BY CATEGORY 1998-2007

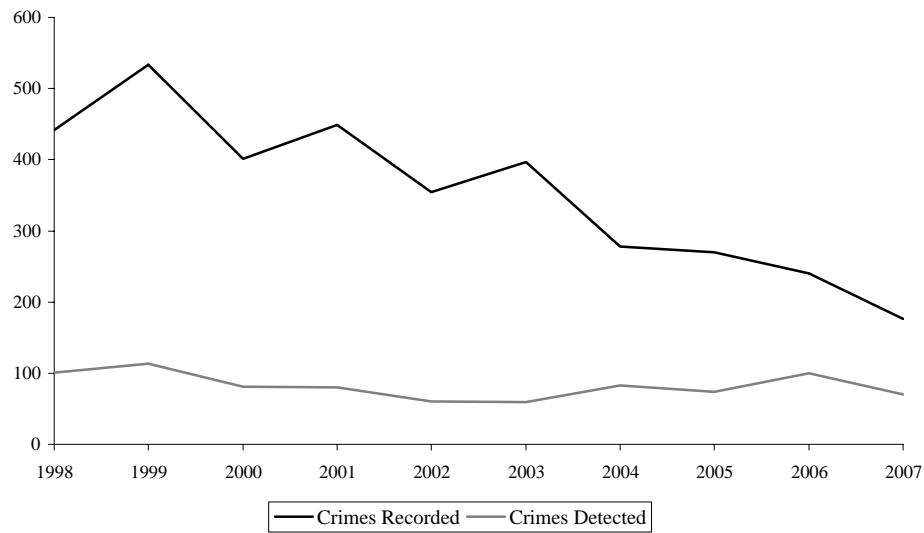
Offences Against the Person



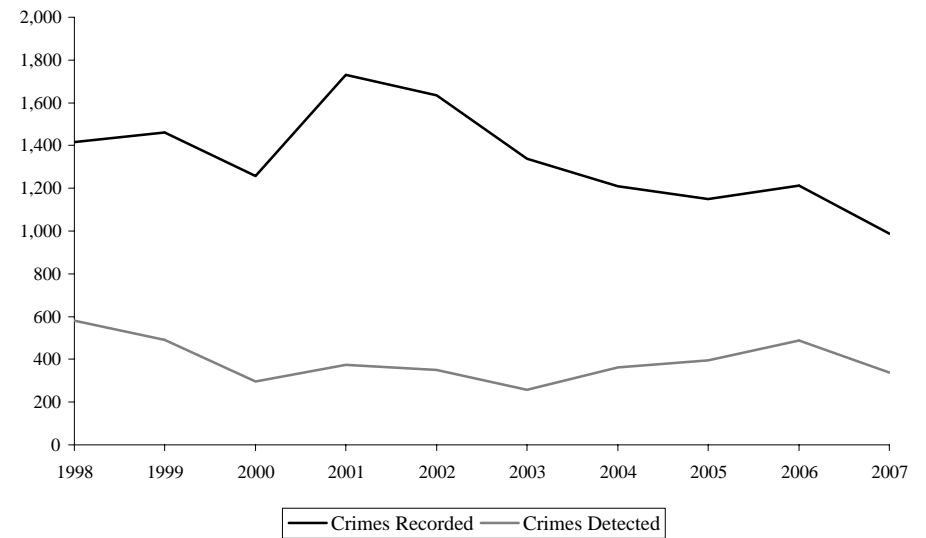
Sexual Offences



Burglary Offences



Theft Offences



Source: Isle of Man Constabulary.

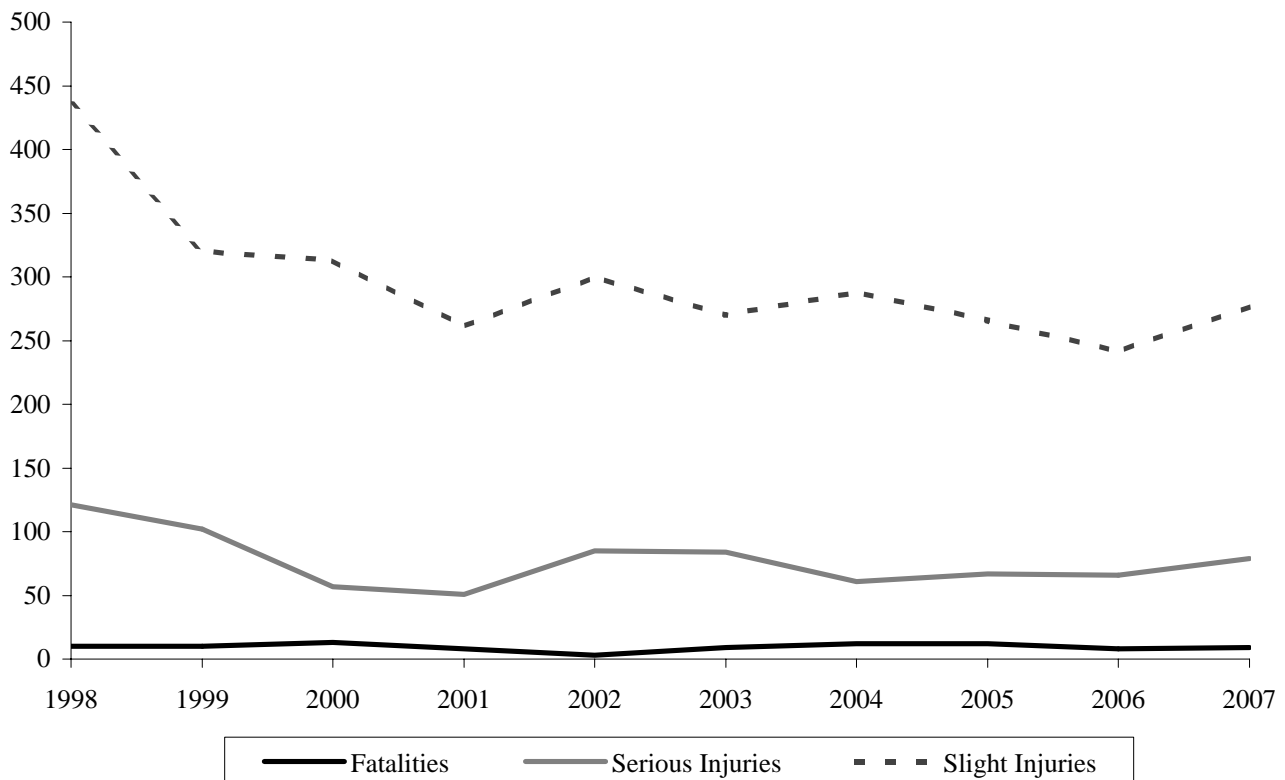
14.3 ROAD ACCIDENTS 1998-2007

	Total Number of Accidents	Vehicles Involved	Number of Collisions		
			Fatalities	Serious Injuries	Slight Injuries
1998	1,033	1,709	10	121	435
1999	1,033	1,717	10	102	320
2000	1,013	1,620	13	57	313
2001	993	1,572	8	51	261
2002	1,096	1,906	3	85	300
2003	1,065	1,850	9	84	270
2004	1,044	1,764	12	61	288
2005	1,033	1,789	12	67	266
2006	965	1,640	8	66	241
2007	926	n/a	9	79	277

Note: 2007 "vehicles involved" data is not available due to DOT backlog.

Source: Isle of Man Constabulary, Traffic Department

14.4 PERSONS INJURED OR KILLED IN ROAD ACCIDENTS 1998-2007



Note: 2007 data are provisional.

Source: Isle of Man Constabulary, Traffic Department

15. NATIONAL INCOME

15.1 NATIONAL INCOME AT FACTOR COST BY SECTOR AT CURRENT PRICES 1996/97 - 2005/06

	1996/97	1997/98	1998/99	1999/00	2000/01
	£000's	£000's	£000's	£000's	£000's
Agriculture, Forestry, Fishing	11,112	10,726	11,853	16,172	15,824
Manufacturing: Food and Drink	11,621	13,814	16,454	11,858	13,317
Engineering, Textiles and Other	64,828	67,167	66,284	67,176	63,347
Construction	42,230	44,587	54,993	71,846	89,600
Gas, Electricity, Water	16,256	15,062	19,868	20,081	17,799
Transport and Communication	61,725	63,198	64,297	68,896	72,256
Wholesale Distribution	15,577	13,464	17,222	18,414	19,048
Retail Distribution	42,944	47,835	53,294	62,247	64,404
Insurance, Banking, Finance and Business Services	271,723	320,414	396,792	448,150	505,382
Information and Communication Technology				23,935	34,303
Professional and Scientific Services	109,606	124,015	137,575	167,443	186,056
Tourist Accommodation	8,121	7,810	8,157	11,611	14,241
Other Catering and Entertainment	11,956	14,003	14,541	26,375	27,875
Miscellaneous Services	26,992	29,808	38,535	41,409	41,654
Public Administration	38,354	40,850	45,725	49,967	53,566
Sub-total earned from Manx sources	733,045	812,753	945,589	1,105,578	1,218,670
Ownership of Dwellings Less Adjustments	-87,426	-93,071	-109,250	-132,848	-160,539
Gross Domestic Product	645,619	719,682	836,338	972,730	1,058,134
Net Income from Abroad	67,273	81,714	70,590	59,048	43,447
Gross National Product	712,892	801,396	906,929	1,031,778	1,101,580
	2001/02	2002/03	2003/04	2004/05	2005/06
	£000's	£000's	£000's	£000's	£000's
Agriculture, Forestry, Fishing	17,656	17,808	18,891	19,013	19,177
Manufacturing: Food and Drink	21,863	22,933	25,380	20,323	23,632
Engineering, Textiles and Other	76,094	75,950	88,672	118,625	111,956
Construction	115,650	134,631	145,736	139,928	134,124
Gas, Electricity, Water	27,114	23,842	33,498	35,582	32,169
Transport and Communication	92,495	79,780	86,420	96,509	110,389
Wholesale Distribution	20,110	20,681	22,011	28,489	24,010
Retail Distribution	76,164	83,042	96,410	102,012	111,543
Insurance, Banking, Finance and Business Services	494,715	539,996	551,090	599,806	670,688
Information and Communication Technology	42,662	47,990	55,270	53,850	54,924
Professional and Scientific Services	202,903	227,101	247,960	305,775	347,521
Tourist Accommodation	10,257	10,938	13,366	21,124	17,295
Other Catering and Entertainment	25,360	25,592	31,379	29,835	35,269
Miscellaneous Services	46,296	53,747	60,449	63,282	71,695
Public Administration	57,205	63,202	70,173	75,085	84,982
Sub-total earned from Manx sources	1,326,544	1,427,233	1,546,705	1,709,240	1,849,373
Ownership of Dwellings Less Adjustments	-198,506	-197,821	-204,857	-213,444	-215,236
Gross Domestic Product	1,128,037	1,229,414	1,341,847	1,495,796	1,634,137
Net Income from Abroad	50,691	48,386	53,930	63,267	66,797
Gross National Product	1,178,728	1,277,800	1,395,777	1,559,063	1,700,935

Source: Treasury, Economic Affairs Division.

Note: The Creamery and Meat Plant are included in Manufacturing: Food and Drink

15.2 NATIONAL INCOME AT FACTOR COST BY SECTOR AT 2005 PRICES 1996/97 - 2005/06

	1996/97	1997/98	1998/99	1999/00	2000/01
Agriculture, Forestry, Fishing	14,426	13,564	14,641	19,527	18,502
Manufacturing: Food and Drink	15,087	17,469	20,324	14,318	15,571
Engineering, Textiles and Other	84,165	84,940	81,876	81,112	74,069
Construction	54,826	56,385	67,929	86,751	104,766
Gas, Electricity, Water	21,105	19,048	24,541	24,247	20,812
Transport and Communication	80,136	79,921	79,421	83,189	84,486
Wholesale Distribution	20,223	17,027	21,273	22,234	22,272
Retail Distribution	55,753	60,493	65,831	75,161	75,305
Insurance, Banking, Finance and Business Services	352,772	405,201	490,131	541,123	590,923
Information and Communication Technology				28,901	40,109
Professional and Scientific Services	142,299	156,831	169,937	202,181	217,548
Tourist Accommodation	10,543	9,877	10,076	14,020	16,651
Other Catering and Entertainment	15,522	17,708	17,962	31,847	32,593
Miscellaneous Services	35,043	37,696	47,599	50,000	48,704
Public Administration	49,794	51,660	56,481	60,333	62,633
Sub-Total	951,696	1,027,821	1,168,023	1,334,941	1,424,943
Ownership of Dwellings Less Adjustments	-113,503	-117,699	-134,950	-160,409	-187,712
Gross Domestic Product	838,193	910,121	1,033,073	1,174,533	1,237,235
Net Income from Abroad	87,339	103,337	87,196	71,298	50,801
Gross National Product	925,532	1,013,458	1,120,269	1,245,831	1,288,034
	2001/02	2002/03	2003/04	2004/05	2005/06
	£000's	£000's	£000's	£000's	£000's
Agriculture, Forestry, Fishing	20,406	20,061	20,662	19,617	19,177
Manufacturing: Food and Drink	25,269	25,835	27,759	20,969	23,632
Engineering, Textiles and Other	87,947	85,559	96,982	122,393	111,956
Construction	133,665	151,665	159,394	144,949	134,124
Gas, Electricity, Water	31,338	26,859	36,637	36,135	32,169
Transport and Communication	106,903	89,874	94,519	99,574	110,389
Wholesale Distribution	23,243	23,298	24,074	29,394	24,010
Retail Distribution	88,028	93,549	105,446	105,252	111,543
Insurance, Banking, Finance and Business Services	571,776	608,318	602,739	618,855	670,688
Information and Communication Technology	49,307	54,062	60,450	55,561	54,924
Professional and Scientific Services	234,509	255,834	271,199	315,487	347,521
Tourist Accommodation	11,855	12,322	14,619	21,795	17,295
Other Catering and Entertainment	29,310	28,830	34,319	30,783	35,269
Miscellaneous Services	53,507	60,547	66,115	65,292	71,695
Public Administration	66,116	71,199	76,750	77,470	84,982
Sub-Total	1,533,179	1,607,811	1,691,664	1,763,525	1,849,373
Ownership of Dwellings Less Adjustments	-229,427	-222,850	-224,057	-220,223	-215,236
Gross Domestic Product	1,303,750	1,384,961	1,467,607	1,543,302	1,634,137
Net Income from Abroad	58,587	54,508	58,984	65,276	66,797
Gross National Product	1,362,338	1,439,469	1,526,591	1,608,578	1,700,935

Source: Treasury, Economic Affairs Division

Note: The Creamery and Meat Plant are included in Manufacturing: Food and Drink

15.3 INCOME GENERATED IN BASIC SECTORS FROM MANX SOURCES AT CURRENT PRICES 1996/97 - 2005/06

	1996/97		1997/98		1998/99		1999/00		2000/01	
		%		%		%		%		%
Manufacturing	76449	10	80981	10	82738	9	79033	7	76,665	6
Finance	271723	37	320414	39	396792	42	448150	41	505,382	41
Construction	42230	6	44587	5	54993	6	71846	6	89,600	7
Agriculture and Fisheries	11112	2	10726	1	11853	1	16172	1	15,824	1
Public Administration	38354	5	40850	5	45725	5	49967	5	53,566	4
Professional and Scientific Services	109606	15	124015	15	137575	15	167442	15	186,056	15
Information and Communication Technology							19,148	2	27,443	2
Tourist Industry (i)	40618	6	42135	5	46255	5	61438	6	67,744	6
Other Services (ii)	142953	20	149045	18	169658	18	192382	17	196,394	16
Sub-total	733,045	100	812,753	100	945,589	100	1,105,578	100	1,218,673	100
	2001/02		2002/03		2003/04		2004/05		2005/06	
	£000s	%	£000s	%	£000s	%	£000s	%	£000s	%
Manufacturing	97,957	7	98,883	7	114,052	7	138,949	8	135,587	7
Finance	494,715	37	539,996	38	551,090	36	599,806	35	670,688	36
Construction	115,650	9	134,631	9	145,736	9	140,487	8	134,124	7
Agriculture and Fisheries	17,656	1	17,808	1	18,891	1	19,013	1	19,177	1
Public Administration	57,205	4	63,202	4	70,173	5	75,085	4	84,982	5
Professional and Scientific Services	202,903	15	227,101	16	247,960	16	305,775	18	347,521	19
Information and Communication Technology	34,130	3	38,392	3	44,216	3	43,080	3	43,939	2
Tourist Industry (i)	72,451	5	74,168	5	85,544	6	97,490	6	98,648	5
Other Services (ii)	233,877	18	233,052	16	269,042	17	289,554	17	314,707	17
Sub-total	1,326,544	100	1,427,233	100	1,546,705	100	1,709,240	100	1,849,373	100

Notes: (i) Tourist accommodation, with proportions of public utilities, distributive services, catering and miscellaneous services.
(ii) Public utilities, distributive services, catering and miscellaneous services less proportions assessed under Tourist Industry.
(iii) Percentages have been rounded and so may not always sum to 100.

Source: Treasury, Economic Affairs Division.

15.4 INCOME GENERATED IN BASIC SECTORS FROM MANX SOURCES AT 2005 PRICES 1996/97 - 2005/06

	1996/97	1997/98	1998/99	1999/00	2000/01
	£000s	£000s	£000s	£000s	£000s
	99,252	102,410	102,201	95,429	89,641
Manufacturing	352,772	405,201	490,131	541,123	590,923
Finance	54,826	56,385	67,929	86,751	104,766
Construction	14,426	13,564	14,641	19,527	18,502
Agriculture and Fisheries	49,794	51,660	56,481	60,333	62,633
Public Administration	142,299	156,831	169,937	202,180	217,548
Professional and Scientific Services				23,121	32,088
Information and Communication Technology	52,733	53,285	57,136	74,184	79,211
Tourist Industry (i)	185,593	188,485	209,567	232,294	229,635
Other Services (ii)					
Sub-total earned from Manx sources	951,696	1,027,821	1,168,023	1,334,942	1,424,947
	2001/02	2002/03	2003/04	2004/05	2005/06
	£000s	£000s	£000s	£000s	£000s
	113,216	111,394	124,741	143,362	135,587
Manufacturing	571,776	608,318	602,739	618,855	670,688
Finance	133,665	151,665	159,394	144,949	134,124
Construction	20,406	20,061	20,662	19,617	19,177
Agriculture and Fisheries	66,116	71,199	76,750	77,470	84,982
Public Administration	234,509	255,834	271,199	315,487	347,521
Professional and Scientific Services	39,446	43,249	48,360	44,448	43,939
Information and Communication Technology	83,737	83,552	93,562	100,586	98,648
Tourist Industry (i)	270,308	262,538	294,257	298,750	314,707
Other Services (ii)					
Sub-total earned from Manx sources	1,533,179	1,607,811	1,691,664	1,763,525	1,849,373

Notes: (i) Tourist accommodation, with proportions of public utilities, distributive services, catering and miscellaneous services.
(ii) Public utilities, distributive services, catering and miscellaneous services less proportions assessed under Tourist Industry.

Source: Treasury, Economic Affairs Division.

**16. GOVERNMENT REVENUE
AND EXPENDITURE**

ADDITIONAL PUBLICATIONS

The Digest of Economic and Social Statistics is one of a series of publications compiled by the Economic Affairs Division of the Isle of Man Treasury. Other publications include the following (free if no price is shown):

Isle of Man Passenger Survey Report 2007 Tables and Graphs (£4.50)
Isle of Man National Income Report 2005/2006
Isle of Man Earnings Survey 2007
Isle of Man Census Report 2006 Summary Results
Isle of Man Census Report 2006 Volume II (£4.50)
Isle of Man General Index of Retail Prices (monthly report)
Isle of Man Job Market Statistics (monthly report)
Isle of Man Labour Statistics 1998 (£1.50)
Isle of Man Summer Passenger Arrivals 1887 to the present

Selected economic statistics are also published monthly on the Economic Affairs Division's pages at the Isle of Man Government's Internet web-site (<http://www.gov.im/treasury/economic>).

Additional information is also available for businessmen, investors or new residents who may wish to take advantage of opportunities in the Isle of Man, on the Financial Services Division's pages of the Government's web-site (<http://www.gov.im/iomfinance>).

All priced publications are available from:

Tynwald Library
Legislative Buildings
Finch Road
Douglas
Isle of Man
IM1 3PW

Telephone: +44 1624 685520
Fax: +44 1624 685522
Email: library@tyrwald.org.im

All free publications and any additional information may be obtained by contacting:

Economic Affairs Division
Isle of Man Treasury
Illiam Dhone House
2 Circular Road
Douglas
Isle of Man
IM1 1PQ

Telephone: +44 1624 685742
Fax: +44 1624 685747
Email: economics@gov.im