

# GEOLOGY OF THE ISLE OF MAN

Select Bibliography

No. 10

January 2004

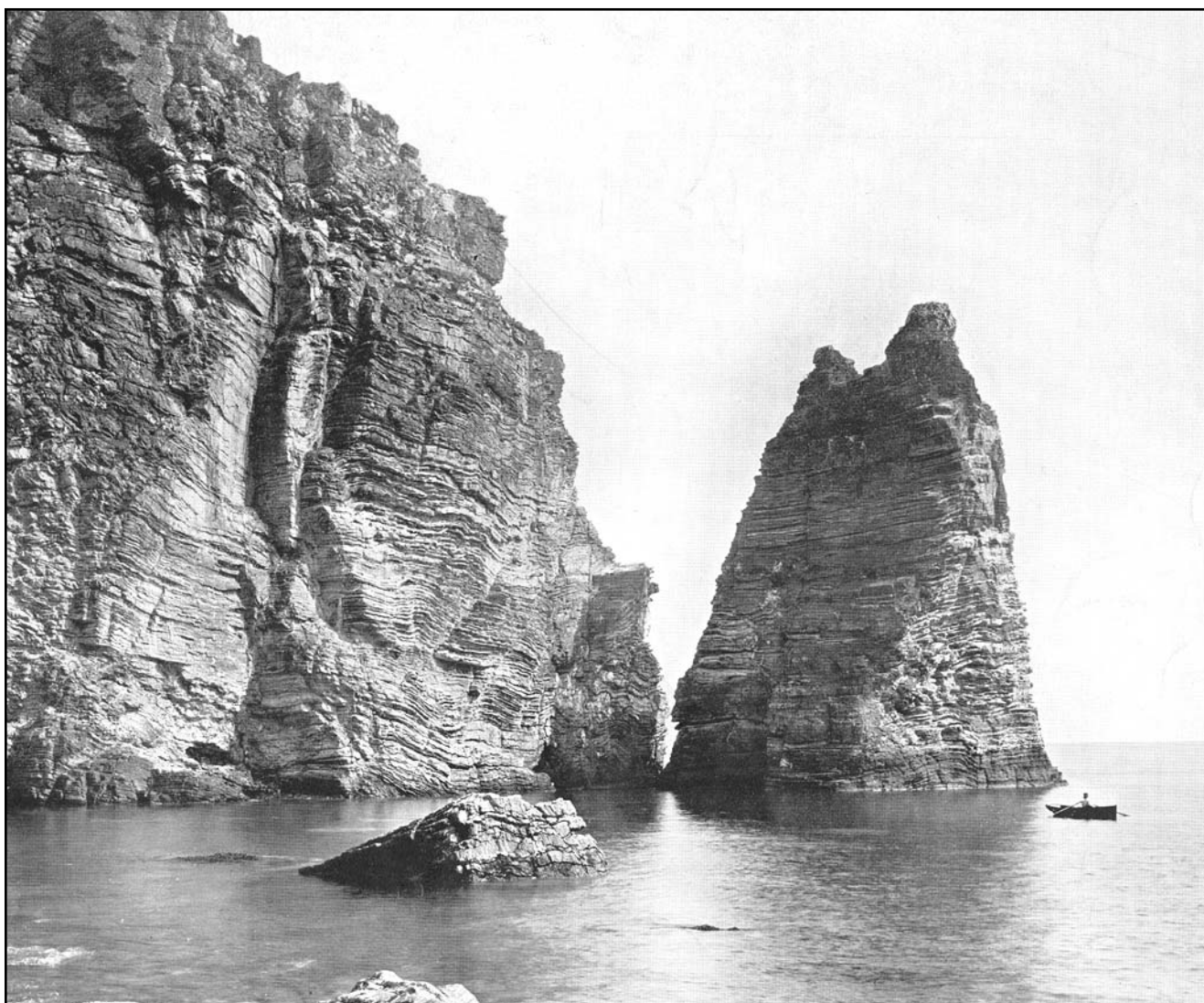
The Isle of Man provides a great variety of geological features and materials which has made it a popular place for those with an interest in geology since early reports of findings were published in the nineteenth century.

Modern interest has been boosted by the recent re-mapping by the British Geological Survey and a number of academic papers and publications relating to specific areas of the Island's geological development.

It is a regular destination for both students and those

with an interest in geology as so much variety can be seen and experienced within a compact area.

The following is a selection from the considerable amount of material available in the library and researchers who require access to other material should consult the library catalogues. Much of it is also available elsewhere through the British Library system, Universities and specialist societies and organisations and some contacts are listed at the end of this bibliography.



*An Edwardian photograph of Sugar Loaf Rock [Library Ref: Photographs - Geology]*

**GEOLOGICAL MAPS**

**British Geological Survey**  
**East Irish Sea Special Sheet edition Solid Geology**  
**scale 1:250,000**  
 Nottingham: BGS, 1994  
 ISBN 0 7518 2917 X  
 Gives the solid geology of the sea floor with a summary of onshore; useful for the northern plain.

Library Ref O81

**British Geological Survey**  
**Isle of Man solid and drift geology**  
**scale 1:50,000**  
 Nottingham: BGS, 2001  
 ISBN flat 0 7518 3325 8, folded 0 7518 3326 6  
 Library Ref O88

**Geological Survey of England and Wales**  
**IOM Sheet 100**  
**scale 1:63360**  
 Southampton: Ordnance Survey, 1898, 1913, 1966  
 These sheets are a mixture of solid and drift editions and were derived from Lamplugh's survey of 1892-97, see his memoir listed below.  
 Library Ref map cabinet

**Geological Survey of England and Wales**  
**IOM**  
**scale 1:10,560**  
 Southampton: Ordnance Survey, c.1900  
 19 sheets based on Lamplugh's survey.  
 Library Ref ask at counter

**Institute of Geological Sciences (now British Geological Survey)**  
**IOM special sheet drift edition**  
**scale 1:50000**  
 Southampton: Ordnance Survey, 1975  
 Reprint of Geological Survey sheet of 1966.  
 Library Ref O43

**Institute of Geological Sciences**  
**Isle of Man sheet 54N 06W**  
**Solid Geology**  
**scale 1:250,000**  
 Southampton: Ordnance Survey, 1982  
 Library Ref O97

**Institute of Geological Sciences**  
**The Sub-Pleistocene Geology of the British Isles and the Adjacent Continental Shelf**  
**scale 1:250,000**  
 Southampton: Ordnance Survey, 1982  
 Library Ref O98

**GENERAL SOURCES**

**Chadwick R. A. et al.**  
**Geology of the Isle of Man and its offshore area.**  
 Nottingham: British Geological Survey, 2001  
 ISBN 0 85272 395 4  
 Memoir to accompany 1:50,000 map issued in 2001.  
 Library Ref A224/100

**Ford T. D., Burnett D. B. and Quirk D. G.**  
**The Isle of Man. Geologists' Association Guide no. 46 2nd rev edition**  
 London: Geologists Association, 2001  
 ISBN 0 900717 79 3  
 This provides a summary description of the Island's geology and geomorphology with eight excursion guides.  
 Library Ref A224/95

**Lamplugh G. W.**  
**Memoirs of the Geological Survey of the United Kingdom, the Geology of the Isle of Man**  
 London: HMSO, 1903.  
 At over 600 pages this is still the most comprehensive guide to the Island's geology, although it has been superseded by the 2001 BGS map and memoir. Lamplugh's maps and notes lodged with the British Geological Survey formed the basis of the 2001 1:50000 map.  
 Library Ref A224

**Pickett E.**  
**Isle of Man: foundations of a landscape.**  
 Nottingham: British Geological Survey, 2001  
 ISBN 0 85272 396 2.  
 Popular introduction to Manx Geology with many photographs and diagrams. Includes use of stone in ancient monuments, crosses and buildings; mining, landscape, and post-ice age changes.  
 Library Ref A224/97

**Quirk D., Crowley S., Woodcock N., Morris J., Barnes R., and Burnett D.**  
**Field Guide to the geology of the Isle of Man.**  
 BG Exploration and Production Ltd. 1998  
 Guide produced for delegates to the conference '*In sight of the suture and future hydrocarbon potential of the Irish Sea*' it includes the Manx, Dalby, Peel and Castletown groups and solid geology of northern plain.  
 Library Ref A224/76q

**Robinson, V. and McCarroll, D.**  
**The Isle of Man - Celebrating a sense of place.**  
 Liverpool: Liverpool University Press, 1990.  
 ISBN 0 85323 036 6  
 Chapter 2, The Manx Landscape pp 10-17  
 Chapter 3, Solid geology pp 18-39  
 Chapter 4, The Quaternary Ice Age: an historical perspective pp 40-54  
 Chapter 5, Late glacial and Post glacial environmental history pps 55-76

Library Ref F68/8

**MANX GROUP (MANX SLATES) & DALBY GROUP**

**Ford T. D., Quirk D., and Burnett D.**  
**The Manx Group of the Isle of Man.**

In Geology Today Vol 17, No 3 May-June 2001 pp 106-109

A good introduction to the complex geology of the Manx Group and Dalby Group

Library Ref A224/104

**Woodcock, N. H., Quirk, D. G., Fitches, W. R. & Barnes, R. P. (eds)**  
**In Sight of the Suture: the Palaeozoic geology of the Isle of Man in its lapetus Ocean context.**

London: Geological Society, 1999 Special Publications No. 160.

ISBN 1 86239 046 0

Source for all aspects of the age, composition, structure and previous literature on the Manx Group and reclassification of the Dalby Group as Silurian.

Library Ref A224/84

**PEEL SANDSTONE**

**Crowley, S. F.**  
**Lithostratigraphy of the Peel Sandstones, Isle of Man.**

In Mercian Geologist 1985 vol 10, pp 73-76.

Letter to the editor with list of references.

Library Ref A224/42q

**In Sight of the Suture and Future Hydrocarbon Potential of the Irish sea Field Guide: Conference Field Guide**

Douglas: 1998

Produced for the use of delegates to the conference held at the Manx Museum in April 1998 pp. 22-28 refer to the Peel sandstones.

Library Ref A224/76q

**Piper, J.D.A. & Crowley, S.F.**  
**Palaeomagnetism of (Palaeozoic) Peel Sandstones...**

In In Sight of the Suture pp. 213-225

Library Ref A224/84

**CASTLETOWN LIMESTONE**

**Dickson, J. A. D., Ford T. D. and Swift, A.**  
**The stratigraphy of the Carboniferous rocks around Castletown, Isle of Man.**

In Proceedings of the Yorkshire Geological Society, 1987 vol 46 pp 203-229

Library Ref A224/42q

**Lewis, H.P.**  
**The Avonian succession in the south of the Isle of Man**

In Quarterly Journal of the Geological Society of London, 1930 vol 86, pp234-290.

Library Ref A224.13(7)

**QUATERNARY: ICE AGE AND RECENT**

**Chiverrell, R.C. Thomas, G.S.P. & Harvey, A.M.**  
**Late Devensian and Holocene landscape change in the uplands of the Isle of Man**

In Geomorphology 2001 Vol. 40 pp. 219-236

Library Ref A224/94

**Dackombe, R.V. & Thomas G.S.P.**  
**Field Guide to the Quaternary of the Isle of Man**

Cambridge: Quaternary Research Association, 1985  
ISSN 0261 3611

Produced to accompany the Annual Field Meeting held at Douglas April 1985

Library Ref A224/38



*The natural arch at Langness, a popular subject for visitors as depicted in this early 1900s picture  
[Library Ref: Photographs - Geology]*

## MINING

**Dackombe, R. V. and Thomas, G. S. P.**  
**Glacial deposits and Quaternary stratigraphy of the Isle of Man.**

In Ehlers, J., Gibbard, P and Rose, J (eds) Glacial deposits of Great Britain and Ireland.

Rotterdam: Balkema 1991 pp333-344

Offprint

Library Ref A224/51q

**Gonzales, S; Innes, J; Huddart, D; Davey, P; and Plater, A.**

**Holocene coastal change in the north of the Isle of Man: stratigraphy, palaeoenvironment, and archaeological evidence.**

In Pye K and Allen J. R. L. Coastal and Estuarine Environments: sedimentology, geomorphology and geoarchaeology.

London: Geological Society Special Publication 175, 2000 pp.343-363

Deals with the recent (i.e. Holocene) raised beach deposits of the Ayres, particularly at Phurt and Lough Cranstal where the deposits include Middle Neolithic and Bronze Age artefacts.

Library Ref A224/93

**Neal, A and Roberts, C L**

**Applications of ground-penetrating radar (GPR) to sedimentological, geomorphological and geoarchaeological studies in coastal environments.**

In Pye K and Allen J. R. L. Coastal and Estuarine Environments: sedimentology, geomorphology and geoarchaeology.

London: Geological Society Special Publication 175, 2000 pp.156-165

Part of this paper divides the east coast sections into fine clastic and organic sediments with an outer complex of beach ridge sands and gravels. It deals with the subdivision and sedimentary structure of the Ayres

Library Ref A224/93

**Thomas, G. S. P.**

**The Quaternary of the Isle of Man**

In Kidson, C and Tooley M. J. (eds) The Quaternary History of the Irish Sea.

Geological Journal Special Issue No. 7 pp 155-179.

Liverpool: Seel House Press, 1977

ISBN 0 902354 07 8

Gives the Quaternary stratigraphy of the NW and NE coasts of the Isle of Man.

Library Ref A224/36

**Tooley, M.**

**Flandrian sea-level changes and a vegetational history of the Isle of Man: a review.**

In Davey, P. "Man and Environment in the Isle of Man" Part 1 pp 15-24

Oxford: British Archaeology Reports 54, 1978

Library Ref F6/79q

**Garrad, L. S., Bawden, T. A., Qualtrough, J.K. and Scatchard, W. J.**

**The Industrial Archaeology of the Isle of Man.**

Newton Abbot: David and Charles 1971

SBN 7153 5440 X

A useful summary description of the Islands mines.

Library Ref F6/62

**Mackay, R. A. and Schnellman, G. A.**

**The mines and minerals of the Isle of Man**

London: 1963

This report was submitted to the Industrial Officer of the IOM Government and includes detailed summaries of all the mines and possibilities for future mining.

Library Ref B170

**Radcliffe, F. J.**

**Manx Mines Rocks and Minerals.**

Douglas: Manx Heritage Foundation, 1994

This pack of historical source material for schools and students includes a useful resource book

Library Ref B170/18q

## OFFSHORE GEOLOGY

**Geology of the Isle of Man and its offshore area**

Nottingham: British Geological Survey, 2001

ISBN 0 85272 395 4

Detailed volume see also the map above O.88

Library Ref A224/100

**Jackson, D.I., Jackson A. A., Evans, D., Wingfield, R.T.R., Barnes, R.P., and Arthur, M. J.**

**The Geology of the Irish Sea.**

United Kingdom Offshore Regional Report

London: HMSO, 1995

ISBN 0 11 884507 1

Includes a short section on economic geology (petroleum, salt etc).

Library Ref A224/60q

**Quirk, D. G. and Kimbell, G. S.**

**Structural evolution of the Isle of Man and central part of the Irish Sea**

In Meadows, N. S., Trueblood, S. P., Hardman, M., and Cowan, G. Petroleum Geology of the Irish Sea and Adjacent Areas.

London: Geological Society, London, Special Publications 1997 Vol 124. pp 135-159.

Library Ref A224/74

## FOSSILS

**Ahlberg, P.E. and Coates, M.I.**

**There's a ratfish in our cellar!**

In Geology Today 1997 vol 13 pp 2023

Library Ref A224/93q

**Downie, C. and Ford, T.D.**

**Microfossils from the Manx Slate Series.**

In *Proceedings of the Yorkshire Geological Society*,  
1966 vol 35, Part 3, No. 13, pp 307-322

Library Ref A224/103(6)

**Garrad, L.S.**

**Collections and collectors of note: The Manx  
Museum - shells from the Manxland Drift.**

In *Geological Curators Group Newsletter*, 1979 pp 231-2

Library Ref A182

**Gonzalez, S., Kitchener, A.C. and Lister, A.M.**

**Survival of the Irish Elk into the Holocene.**

In *Nature* 15.06.2000 vol 405, pp 753-754

Library Ref A72Bq

## MISCELLANEOUS

**Isle of Man from the Air: a unique view of the  
island's spectacular and historic scenery**

Duke Marketing 1999 (NTSC or PAL format)

This 78 minute video gives a good impression of the  
geological features of the island and would assist  
remote researchers who are unable to physically visit  
the Island it is available either direct from Duke or from  
local retailers.

### Journals

The Library also has some back issues of *Geology  
Today* 1985-2002 and *Geological Association  
Proceedings* 1974-2002.

Please ask for further details.

## BIBLIOGRAPHY

A detailed bibliography of geology by Eva Wilson has  
been published and is included in the following title  
which is also cited above.

**Woodcock, N.H.**

**In sight of the Suture**

pp 345-361

it is also available and can be searched on line through  
the *Centre for Manx Studies* at

<http://dweb.liv.ac.uk/manninagh/bibs.htm>

The Manx National Heritage Library holds a wealth of  
various and extensive source material.  
Staff at the library and throughout Manx National Heritage,  
are always pleased to hear from anyone with an interest in  
Manx history.

**Manx National Heritage,  
Douglas, Isle of Man IM1 3LY.  
Tel: (01624) 648000  
Fax: (01624) 648001  
E-mail: [library@mnh.gov.im](mailto:library@mnh.gov.im)  
Website: [www.gov.im/mnh](http://www.gov.im/mnh)**

**Opening times:** Monday to Saturday, 10am to 5pm  
Closed Sunday and for one week in January.

## CONTACTS

### British Geological Survey

Keyworth HQ, Kingsley Dunham Centre, Keyworth,  
Nottingham NG12 5GG

[www.bgs.ac.uk/](http://www.bgs.ac.uk/)

To purchase copies of maps and publications.

### Centre for Manx Studies

<http://dweb.liv.ac.uk/manningah/bibs/htm>

Web Sites:

There is a wealth of information about the Isle of Man  
available on the Internet. The following are useful sites  
for geologists:

### Geologist's Association

Burlington House, Piccadilly, London W1V 9AG

[www.geologist.demon.co.uk](http://www.geologist.demon.co.uk)

### Laxey Mines Research Group

[www.isle-of-man-newspapers.com/mines/](http://www.isle-of-man-newspapers.com/mines/)

This Island based research group covers all the mines  
on the Island and has site tours on its site.

### Manx Geological Survey

[www.manxgeology.com](http://www.manxgeology.com)

Launched in 2002 by Manx geologists Dr David Quirk  
and Dr David Burnett. It contains maps, videos and  
other interactive material largely based on research  
conducted between 1994 and 2001

### Manx Note Book

<http://www.isle-of-man.com/manxnotebook>

This web site compiled by Francis Coakley has  
numerous extracts from local publications relating to  
Geology on the Island including edited extracts from  
Lamplugh's *Outline of the Geology* (1897) and from the  
Memoir dealing with general description of the Island,  
the Irish Elk, and economic geology (mining,  
descriptions of main mines and minor trials, non-metallic  
extractive products, soils and water supply).

MNH Library is a reference only facility and does not  
lend items through the Inter Library Loan system.  
However, photocopies of some material, subject to  
copyright and the need to preserve originals may be  
available on receipt of the appropriate copying fee.  
Some material may also be available through Inter  
Library Loans from other libraries and research centres.

The following links are useful for researchers:

British Library Newspaper Library -

<http://prodigi.bl.uk/nlcat>

British Library on-line public catalogue -

<http://blpc.bl.uk>

Library of Congress -

<http://catalog.loc.gov>

GSM/AGF 03.04