

ROUTE PLAN

From **WP01** Go over small foot bridge on south side of car park, continue through gate and turn left 90 metres

WP02 Follow the public footpath signs up hill, behind house, into plantation 220 metres

WP03 Following public footpath round to the right, stay on forest ride, gently up hill 300 metres

WP04 Turn left, follow forest ride on the level passing ruins of farmhouse on left. Do not enter it may be unsafe. Continue onwards 350 metres

WP05 Turn right and follow sod hedge directly up hill. Hedge will change to a dry stone wall. Continue upwards 450 metres

WP06 Pass through the gap and continue on the other side of the wall. Here the view opens over heather moorland. Follow the plantation edge 450 metres

WP07 Stone track. Turn left and follow one of the parallel unsurfaced tracks across the heath 1100 metres

WP08 Enter the young forestry plantation over stile and continue forwards on forest road 310 metres

WP09 Turn left and follow forest road down hill 820 metres

WP10 Bridge over stream. Continue uphill on forest road before descending 1300 metres

WP11 Piped stream crossing. Continue uphill on forest road before descending 1500 metres

WP12 Piped stream crossing. Continue uphill on forest road, out of plantation 1500 metres

WP13 Join bridleway, following forest road onto Governor Loch's Road. Turn left onto B10 1450 metres

WP14 Turn right onto Greenway Road and continue uphill 810 metres

WP15 Bear left as Greenway Road turns right. Follow path 430 metres

WP16 Old sheep dip. Take lower path and continue down hill 900 metres

WP17 Stream crossing at boundary with fields. Follow boundary path 1150 metres

WP18 Point overlooking old resevoir. Bear right, follow path 380 metres

WP19 Stream crossing by old mine workings. Follow path uphill 120 metres

WP20 Bear left and continue following path uphill 330 metres

WP21 Follow path round hill 350 metres

WP22 Turn left, rejoining Greenway road, follow down hill 2850 metres

WP23 A3 in Kirk Michael Village.

WARDEN'S WALK Hiker's Trail

Warden's Walks are available as a series of leaflets, each with a detailed map and route description. They are also available on our website and should be used in conjunction with the Outdoor Leisure Map 1:25,000 series.

This is a walk of 17 kilometres, about 11 miles. Approx. 6 - 7 hours including stops. The route begins with a steady climb through Eairy Beg, crossing the Twelve Shares to Glion Gill plantation. Then it follows the undulating forest road in and out of a young plantation to join the Cronk Breck bridleway at Governor Loch's Road. The route then follows the Greenway Road onto the Michael Hills at Sartfell. It then leaves the Greenway and follows an old track down to the boundary wall, following the wall to a disused reservoir at the foot of Slieau Freoaghane. From here there is a steep climb to rejoin the Greenway Road for the descent to Kirk Michael village.

No.12



WARDEN'S WALK



Hiker's Trail

17 kilometres, 11 miles. Approx. 6 - 7 hours



No.12 in a series of walks
in the Manx countryside, created
by the Island's Forestry Warden

**Department of Environment,
Food and Agriculture**

Supported by



20p
WHERE SOLD

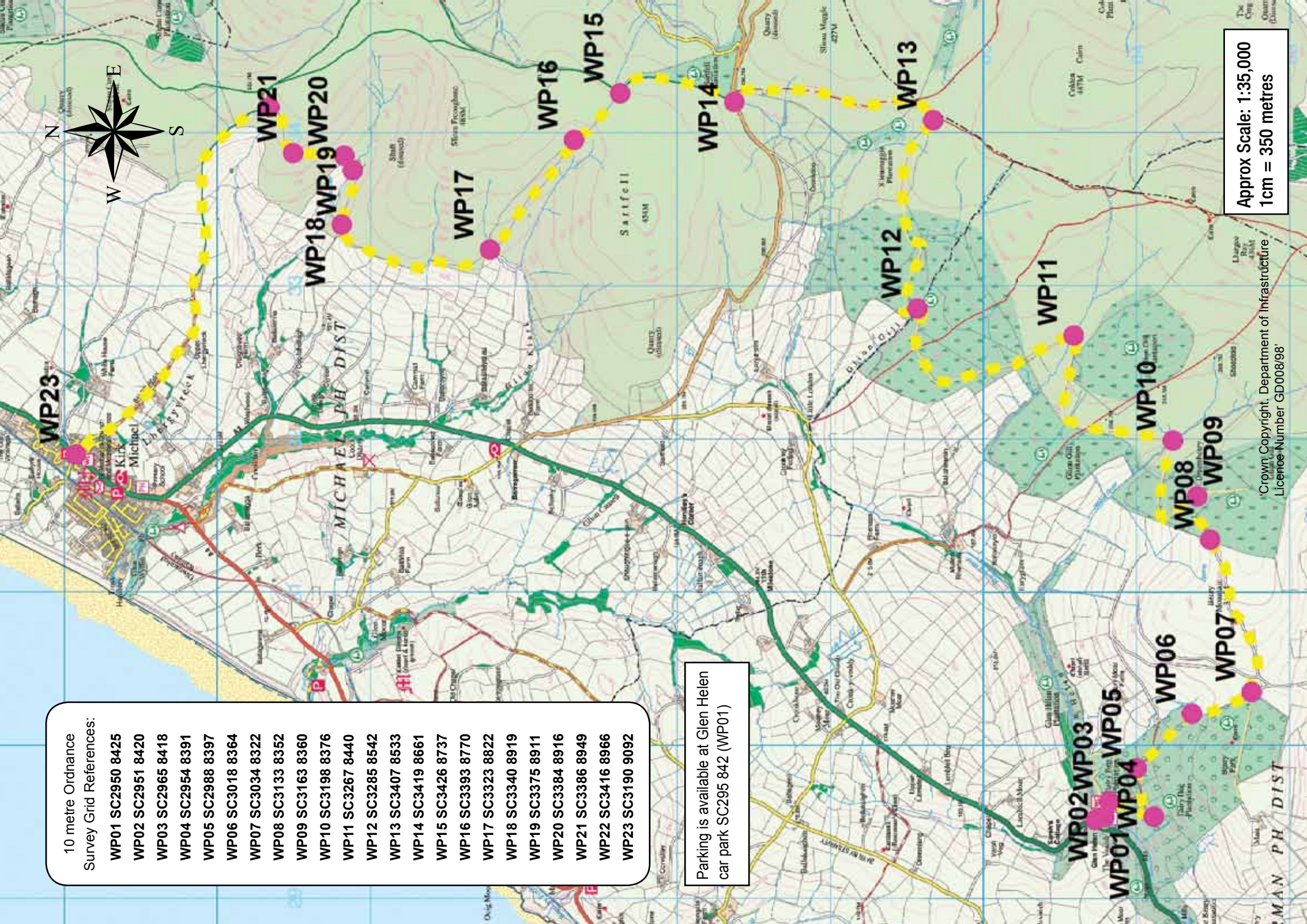
Department of Environment, Food and Agriculture, Thie Sieau Whallian, Foxdale Road, St. Johns, IM4 3AS
Tel: 01624 801263 • Fax: 01624 801060 - E-mail enquiries: defa@gov.im - Website: www.gov.im/defa

CONTACT

10 metre Ordnance
Survey Grid References:

WP01 SC2950 8425
WP02 SC2951 8420
WP03 SC2965 8418
WP04 SC2954 8391
WP05 SC2988 8397
WP06 SC3018 8364
WP07 SC3034 8322
WP08 SC3133 8352
WP09 SC3163 8360
WP10 SC3198 8376
WP11 SC3267 8440
WP12 SC3285 8542
WP13 SC3407 8533
WP14 SC3419 8661
WP15 SC3426 8737
WP16 SC3393 8770
WP17 SC3323 8822
WP18 SC3340 8919
WP19 SC3375 8911
WP20 SC3384 8916
WP21 SC3386 8949
WP22 SC3416 8966
WP23 SC3190 9092

Parking is available at Glen Helen
car park SC295 842 (WP01)



Approx Scale: 1:35,000
1cm = 350 metres

© Crown Copyright. Department of Infrastructure
Licence Number GD008/98