

# ROUTE PLAN

Parking is available at South Barrule Plantation car park. **SC275766, (WP01)**

From **WP01** Exit car park and follow public road 350 metres to road junction

**WP02** Cross road with care, turn left and follow main road 200 metres

**WP03** Turn right down lane, bear right 230 metres

**WP04** Entrance to Stoney Mountain plantation. Follow forest road and track uphill 680 metres

**WP05** Continue straight on downhill, following track and forest road 910 metres

**WP06** Bear left and follow forest road 450 metres

**WP07** Entrance. Turn right onto public footpath and continue uphill inside boundary hedge 620 metres

**WP08** Bear left, following path 250 metres

**WP09** Pass through gate and follow path outside boundary fence 430 metres

**WP10** Follow track down 210 metres

**WP11** Cross stream and follow lane (often boggy here) 300 metres

**WP12** Cross road with care, straight on 80 metres

**WP13** Turn right at lay-by into South Barrule plantation and follow forest road straight on 670 metres

**WP14** Driveway to depot, turn left then right back onto forest road 570 metres  
**WP01** (Start point)

10 metre Ordnance Survey Grid References -

<b>WP01 SC2752 7668</b>	<b>WP08 SC2862 7565</b>
<b>WP02 SC2781 7675</b>	<b>WP09 SC2840 7555</b>
<b>WP03 SC2786 7695</b>	<b>WP10 SC2803 7572</b>
<b>WP04 SC2809 7701</b>	<b>WP11 SC2789 7584</b>
<b>WP05 SC2862 7661</b>	<b>WP12 SC2777 7557</b>
<b>WP06 SC2886 7576</b>	<b>WP13 SC2769 7557</b>
<b>WP07 SC2919 7548</b>	<b>WP14 SC2765 7619</b>

Department of Environment, Food and Agriculture, The Sieau Whallian, Foxdale Road, St. Johns, IM4 3AS  
Tel: **01624 801263** • Fax: **01624 801060** - E-mail enquiries: [defa@gov.im](mailto:defa@gov.im) - Website: [www.gov.im/defa](http://www.gov.im/defa)

CONTACT

## WARDEN'S WALK

# Stoney Mountain

Warden's Walks are available as a series of leaflets, each with a detailed map and route description. They are also available on our website. They should be used in conjunction with the Outdoor Leisure Map 1:25,000 series.

This is a walk of 6 kilometres, about 4 miles. Approx. 1 - 1.5 hours. It involves a short length of roadside walking before diverting into a narrow lane. A short climb into Stoney Mountain plantation is followed by a gradual descent by forest road. The walk then diverts onto a public footpath along the plantation boundary. It then follows a short lane, crossing a road, before entering South Barrule plantation. It finishes with a level walk by forest road, back to the start.

Stoney Mountain is known for its source of granite which is quarried extensively on the NE corner of the plantation. This quarry produces crushed rock aggregate used locally for building and roadstone.

Open areas within Stoney Mountain plantation make ideal habitats for some of the Island's rarer birdlife including short-eared owls and hen harriers. Redpolls and crossbills may also be seen in the area. The return leg of the walk passes through South Barrule, one of the Island's original 'Crown Plantations', first planted in the 1880's. The principle species of trees planted here are Sitka spruce, Lodgepole pine and Japanese larch. Whilst still a commercial plantation and important for timber production, it is now also recognised for its huge recreational potential and is used regularly by walkers, horse riders and cyclists.

Indeed, with the increased popularity of off-road cycling in recent years, the Department has created a series of graded trails for mountain biking at this venue.

Look out for dragonflies and damselflies at the fire pond near to the car park.

NO.2

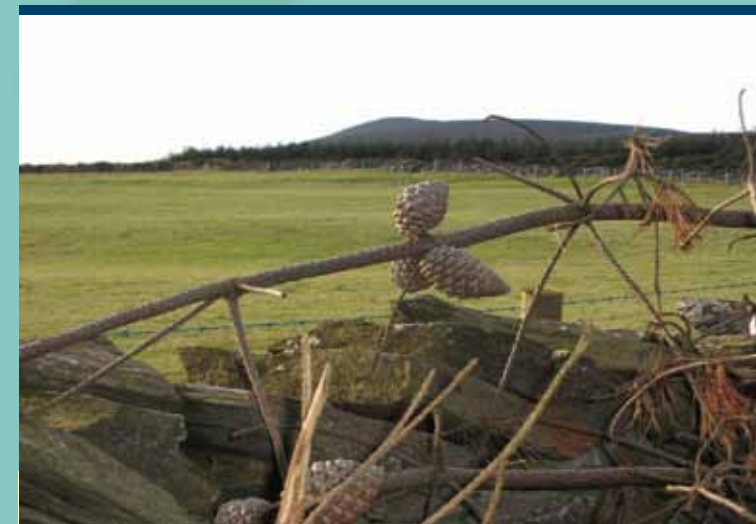


## WARDEN'S WALK



# Stoney Mountain

6 kilometres, 4 miles. Approx. 1 - 1.5 hours



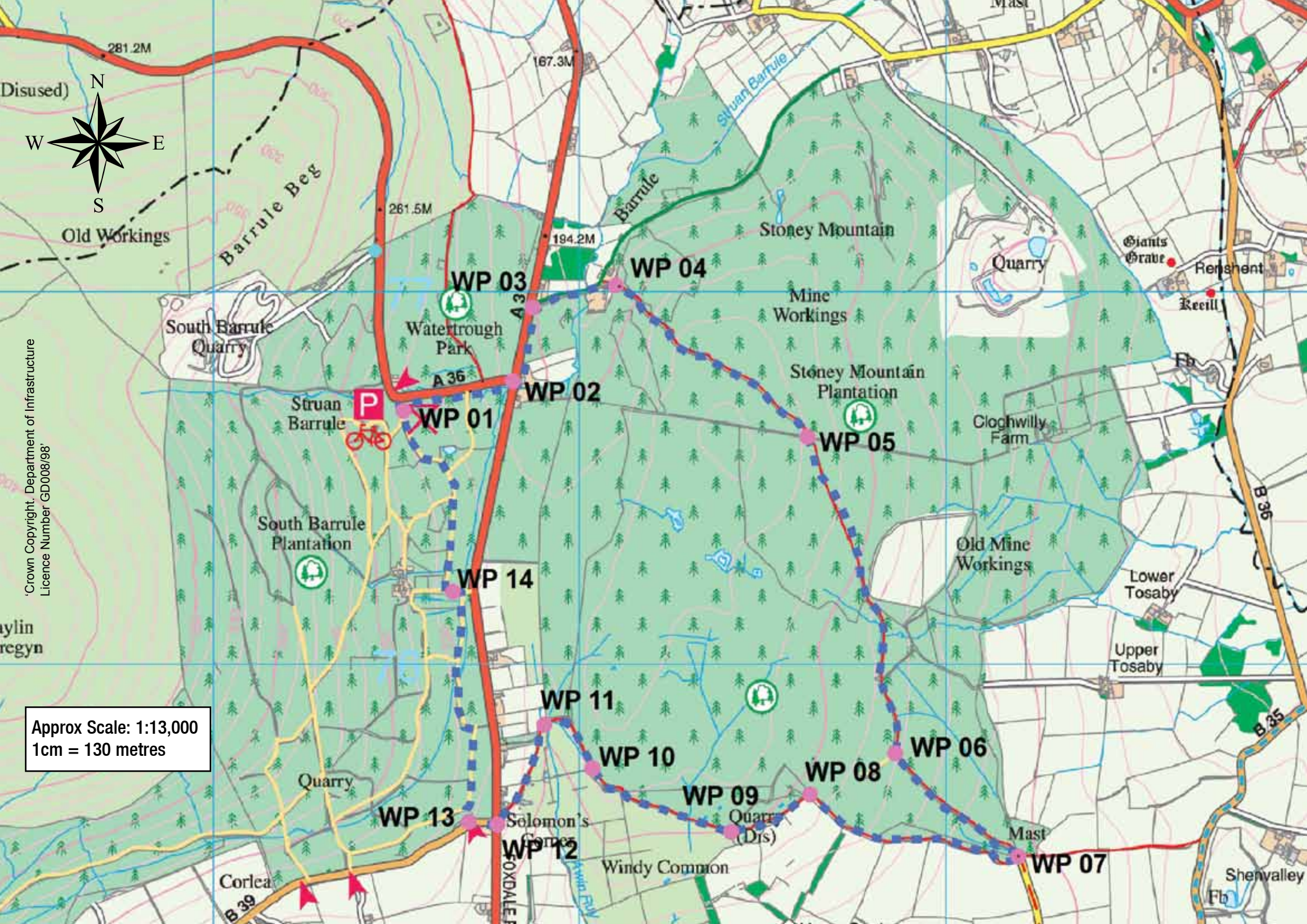
*No.2 in a series of walks  
in the Manx countryside, created  
by the Island's Forestry Warden*

**Department of Environment,  
Food and Agriculture**

Supported by



**20p**  
WHERE SOLD



Crown Copyright: Department of Infrastructure  
Licence Number GD008/98

Approx Scale: 1:13,000  
1cm = 130 metres



WP 03

WP 04

WP 02

WP 01

WP 05

WP 14

WP 11

WP 10

WP 06

WP 13

WP 12

WP 09

WP 08

WP 07

281.2M

167.3M

261.5M

194.2M

South Barrule Quarry

Watertrough Park

Stoney Mountain

Quarry

Giants Grave

Renshent

Recill

Struan Barrule

South Barrule Plantation

Stoney Mountain Plantation

Cloghwillly Farm

Old Mine Workings

Lower Tosaby

Upper Tosaby

Quarry

Solomon's Corner

Quarry (Dis)

Mast

Windy Common

Corlea

Shenvalley

Barrule Beg

Barrule

Struan Barrule

B 39

OXDALE

B 36

B 35