

IN THE KNOW: Keeping Staff Informed

Volume 19 (20) May 2024

Struggling to access any of the articles in the bulletin today? Some may be available via [Athens](#) (for eligible library members), you can check [using Google Scholar](#). Article not available via Athens or you don't have a login? [Request the article](#) from the library! Not a member yet? You can [join here](#).

Check out our library [website](#) and our [Twitter](#) for details of all our services, facilities and any forthcoming events.



Do you have feedback about library resources, staff, or spaces? Share it here: <https://www.surveymonkey.com/r/KDFeedback>

In this issue:

IN THE SPOTLIGHT

MANX SKEET

STAFF HEALTH & WELLBEING

HOT OFF THE PRESS

PUBLIC HEALTH

EVIDENCE BASED PRACTICE

SOCIAL AND COMMUNITY CARE

HEALTH MANAGEMENT

PATIENT INFORMATION

LIBRARY BITS AND PIECES

IN THE SPOTLIGHT

[Semaglutide and Diuretic Use in Obesity-Related Heart Failure with Preserved Ejection Fraction: A Pooled Analysis of the STEP-HFpEF and STEP-HFpEF-DM trial](#)

[Proteins in blood could provide early cancer warning 'by more than seven years'](#)

STAFF HEALTH & WELLBEING

[Don't interfere with livestock when out walking, says MNFU](#)

[Domestic appliances are replaceable - you aren't!](#)

[Don't pick-up lambs who look abandoned, warns MNFU](#)

[Mobile library adds Laxey to its route map](#)

[Treasury Minister says electricity prices are coming down](#)

[Top 10 mood-boosting foods](#)

[New insights into how exercise may help prevent or slow cognitive decline during aging](#)

Useful links

[**Patient.co.uk**](#)

[**NHS Website**](#)

[**Mental Health Foundation**](#)

[**World Health Organisation**](#)



MANX SKEET

[Mental Health Awareness Week: don't struggle alone say local charities](#)

[IOM Medical Society gives backing to Tynwald amendment](#)

[19 nurses awarded Nightingale badges for International Nurses Day](#)

[MHK wants Island to adopt health recruitment Code of Practice](#)

[Average age of death on-Island is 78](#)

[Huge motorbike ride for men's health](#)

[MHKs hear evidence from experts on assisted dying](#)

[Doctor cuts info won't be made public by government](#)

['Fallacy' to think assisted dying legislation wouldn't change, says CM](#)

[Manx Care holding foster care events](#)

[Charity's annual report shows 32 per cent increase in victim referrals](#)

[Manx Care awarded £3.4m to transform children's mental health services](#)

[Renewed calls for foster carers](#)

[Protect your child from measles, says Manx Care](#)

[Biker helmet information cards available at Sea Terminal](#)

[Manx Care issues TT advice for residents and visitors](#)

[CBT wait lists hoped to reduce after therapists achieve higher qualification](#)

[Access to medical records for court cases can take 'a significant amount of time'](#)

[Assisted dying: The witnesses' views](#)

[Bid to keep assisted dying services away from Manx Care defeated](#)

['Menopause still a taboo subject', says student](#)

[70% of people seeking debt advice suffer from mental ill health](#)

HOT OFF THE PRESS

BBC News

[Media leaks during Covid were frustrating - Swann](#)

['I wasn't believed and gave birth in a toilet'](#)

[NHS offers life-saving drug for stiff heart condition](#)

[I lost my mum, dad and baby sister to HIV in infected blood scandal](#)

[Birth trauma inquiry urges maternity care overhaul](#)

[Poor maternity tolerated as normal, inquiry says](#)

[Man who received first pig kidney transplant dies](#)

[Test-at-home kit for cancer patients approved for use](#)

[Vaccine expert 'very worried' by whooping cough deaths](#)

[Weight loss jab 'could reduce heart attack risk'](#)

[Health spending £5bn less than government planned](#)

[Top doctor cancer-free a year after world-first therapy](#)

[Life-saving overdose drug to be given without prescription](#)

[Assisted dying set to move closer on Isle of Man](#)

[Junior doctors talks need time and space - Atkins](#)

[Late education plans mean kids miss out on support](#)

[ADHD meds shortage 'is like a doomsday clock'](#)

[HPV vaccine stops 90% of cervical cancer cases](#)

['I thought my skin cancer was a bite'](#)

[Junior doctors in England agree to talks with government](#)

[People with HIV can be sperm and egg donors](#)

[More hospitals leaving patients in corridors to free up ambulances](#)

[Millions more middle-aged are obese, study suggests](#)

[Brazilian butt lift firms banned after woman in hospital](#)

[Teenager used pills for illegal abortion, court hears](#)

[Family of weight-loss op victim call for sales ban](#)

Useful Health Links

[NHS Website: A-Z of health conditions](#)

[NHS Website](#)

[Check NHS standards near you](#)

[Cancer Help UK](#)

[British Heart Foundation](#)

[Health and Care Professions Council](#)

[Mental Health Foundation](#)

[General Medical Council](#)

[Nursing and Midwifery Council](#)

[Care Quality Commission](#)

[NICE](#)

[NHS Scotland](#)

[Health in Wales](#)

[NI Direct](#)

[Clinical trials information](#)

[Diabetes UK](#)

[British Lung Foundation](#)

[National Obesity Forum](#)

Critical Thinking

Do you believe everything you read? Is there truth behind the headlines? Why does false information spread so fast on social media? What can you do to make sure you don't get taken in? Start by looking up the stories on websites such as the ones below:

[BBC Reality Check](#)

[Full fact](#)

[Ferret Fact Service](#)

[British Heart Foundation – Behind the headlines](#)

Misinformation

Do you keep a look out for misinformation circulating online? Do you know the impact it could have on patients? How do you counter it?

[Pediatric Vaccination Adherence: Enhancing Compliance Among First-Generation Asian American Parents](#)

[Misinformation does not reduce trust in accurate search results, but warning banners may backfire](#)

[Toward Mitigating Misinformation and Social Media Manipulation in LLM Era](#)

[Irritable Bowel Syndrome \(IBS\) and medical misinformation: lessons to be learned from the COVID-19 infodemic](#)

Bulletins

(click to open)

[Bulletin for clinical commissioning groups \(CCGs\)](#)

[Chief Nursing Bulletin](#)

[Healthcare Science Bulletin](#)

[Compassion in Practice strategy and 6Cs Live!](#)

[Liaison and Diversion Bulletin](#)

[Pharmacy and Medicines Bulletin](#)

[Primary Care Bulletin](#)

[Specialised Commissioning Stakeholder Bulletin](#)

[Revalidation Matters](#)

[Liaison and Diversion Bulletin](#)

[Specialised Commissioning Stakeholder Bulletin](#)



PUBLIC HEALTH

Health e-News Bulletin/NLH Public Health Newsletter

Adult Protection & Safeguarding Domestic Violence

[The Impact of Daylight Saving Time Transitions on Domestic Violence Call Volume](#)

[Reclaiming Voices: Songwriting as a Therapeutic Tool for Female Survivors of Sexual Violence-A Literature Review](#)

[The power of language to transform efforts to address intimate partner violence: Tensions in the field and pathways forward](#)

Addiction

[Incident psychotic experiences following self-reported use of high-potency cannabis: Results from a longitudinal cohort study](#)

[A lifestyle physical activity intervention for women in alcohol treatment: A pilot randomized controlled trial](#)

[Charting a New Course for Addiction Education in General Psychiatry Residency Training](#)



Allergies

[Sublingual immunotherapy for allergy to shrimp: the nine-year clinical experience of a Midwest Allergy-Immunology practice](#)

[Immunotherapy and biologics in the management of IgE-mediated food allergy: Systematic review and meta-analyses of efficacy and safety](#)



Cardiovascular Disease

[Consensus Statement on the Diagnosis and Management of Cardiac Sarcoidosis](#)

[Updated Guideline for Hypertrophic Cardiomyopathy](#)

[Development and Validation of an Explainable Deep Learning Model to Predict In-Hospital Mortality for Patients With Acute Myocardial Infarction: Algorithm Development and Validation Study](#)



Complementary Medicine/Alternative Medicine

[Cepharanthine synergistically promotes methylprednisolone pharmacodynamics against human peripheral blood mononuclear cells possibly via regulation of P-glycoprotein/glucocorticoid receptor translocation](#)

[Beyond standard treatment: A qualitative descriptive study of cancer patients' perceptions of hypnotherapy in cancer care.](#)

[Chinese Herbal Medicine and Acupuncture for Insomnia in Stroke Patients: A Systematic Review and Meta-Analysis of Randomised Controlled Trials](#)

Critical Care

[Low-dose short infusion ketamine as adjunct to morphine for acute long bone fracture in the emergency department: a randomized controlled trial](#)

[Enhancing Heat-Related Illness and Injury Management in the ICU with a Focus on Gastrointestinal Injury](#)

[Effect of CytoSorb on Interleukin-6: Erratum](#)

Dementia

[Physician Antipsychotic Overprescribing Letters and Cognitive, Behavioral, and Physical Health Outcomes Among People With Dementia](#)

[Unlocking the Brain's Zinc Code: Implications for Cognitive Function and Disease](#)

[Treating Depression in Dementia Patients: A Risk or Remedy—A Narrative Review](#)

Dental



[In-vitro biofilm removal from TiUnite® implant surface with an air polishing and two different plasma devices](#)

[Dental biomaterials redefined: molecular docking and dynamics-driven dental resin composite optimization](#)

[The relationship between clinical symptoms of oral lichen planus and quality of life related to oral health](#)

[Effect of fence tray matching care on excess adhesive and bracket placement accuracy for orthodontic bonding: an in vitro study](#)

[Simultaneous detection of dental caries and fissure sealant in intraoral photos by deep learning: a pilot study](#)

[Gamification and Oral Health in Children and Adolescents: Scoping Review](#)

Diabetes

[Can type 1 diabetes be prevented or reversed?](#)

[Estimated glucose disposal rate predicts the risk of diabetic peripheral neuropathy in type 2 diabetes: A 5-year follow-up study](#)

[Clinical investigation of glucokinase activators for the restoration of glucose homeostasis in diabetes](#)



Diet, Nutrition and Obesity

[Sociodemographic predictors of perceived weight discrimination](#)

[Maternal obesity, interpregnancy weight changes and congenital heart defects in the offspring: a nationwide cohort study](#)

[An Adaptive Behavioral Intervention for Weight Loss Management: A Randomized Clinical Trial](#)

[Text Messages With Financial Incentives for Men With Obesity: A Randomized Clinical Trial](#)

[Conference report: study suggests millions more middle-aged are obese](#)



Digital Health Technology

[Imperial College Healthcare expands patient research database](#)

[NHS Dumfries and Galloway working with NCSC after 3TB data leak](#)

[Digital Mental Health for Schizophrenia and Other Severe Mental Illnesses: An International Consensus on Current Challenges and Potential Solutions](#)

[Emerging Trends of Self-Harm Using Sodium Nitrite in an Online Suicide Community: Observational Study Using Natural Language Processing Analysis](#)

[Potential of Large Language Models in Health Care: Delphi Study](#)



End of Life Care

[Use of the supportive and palliative care indicators tool \(SPICT™\) for end-of-life discussions: a scoping review](#)

[Generalist, specialist, or expert in palliative care? A cross-sectional open survey on healthcare professionals' self-description](#)



Immunisation and Infection

[Effect of Tocilizumab plus Corticosteroid on Clinical Outcome in Patients Hospitalized with Severe Fever with Thrombocytopenia Syndrome: A Randomized Clinical Trial](#)

[An update on the anti-spike monoclonal antibody pipeline for SARS-CoV-2](#)

[Increased Incidence of Invasive Pneumococcal Disease in Hong Kong in 2023](#)

[Urgent considerations for booster vaccination strategies against Ebola virus disease](#)

[Evaluation of a single-dose HPV vaccine strategy for promoting vaccine, health, and gender equity](#)

[Infections in cirrhosis](#)

Inclusion and Diversity

[Using Routine Data to Improve Lesbian, Gay, Bisexual, and Transgender Health](#)

[Social Prescribing and Health Inequalities in the Rural and Coastal County of Lincolnshire-A Report to NHS Lincolnshire Integrated Care Board](#)

Learning Disability

[Comparison of thinking styles and academic well-being in students with and without learning disabilities](#)

[Synthesis of Writing Intervention Studies for English Learners With Learning Disabilities](#)

Medical Education

[Novice providers' success in performing lumbar puncture: a randomized controlled phantom study between a conventional spinal needle and a novel bioimpedance needle](#)

[Importance of multimodal resident education curriculum for general surgeons: perspectives of trainers and trainees](#)

[The reliability of the College of Intensive Care Medicine of Australia and New Zealand "Hot Case" examination](#)

Mental Health

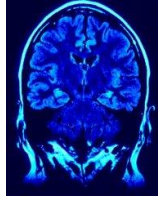


[Are psychological interventions effective in preventing relapse and recurrence in depression?](#)

[Study shows heightened sensitivity to PTSD in autism](#)

[Feasibility and Acceptability of a Mobile App–Based TEAM-CBT \(Testing Empathy Assessment Methods–Cognitive Behavioral Therapy\) Intervention \(Feeling Good\) for Depression: Secondary Data Analysis](#)

[Shifting the Balance Towards Social Interventions: A Call for an Overhaul of the Mental Health System](#)



Neurology

[Medical management and surgery versus medical management alone for symptomatic cerebral cavernous malformation \(CARE\): a feasibility study and randomised, open, pragmatic, pilot phase trial](#)

[B cell-targeting chimeric antigen receptor T cells as an emerging therapy in neuroimmunological diseases](#)

[Climate change and disorders of the nervous system](#)

Obstetrics and Gynaecology

[Diabetic acidosis with severe fetal hypoxia in pregnancy: Narrative review and case study](#)

[Bevacizumab is associated with a higher gastrointestinal/genitourinary fistula or perforation risk in cervical cancer patients undergoing pelvic radiotherapy](#)

[Prevalence threshold and positive predictive value of noninvasive prenatal testing](#)

[Gynecologic oncology robot-assisted surgery in octogenarians: Impact of age on hospital stay](#)

Oncology



[A Predictive Noninvasive Single-Nucleotide Variation–Based Biomarker Signature for Resectable Pancreatic Cancer: Protocol for a Prospective Validation Study](#)

[A guide to artificial intelligence for cancer researchers](#)

[Finding the truth in science](#)

[Cancer therapy with antibodies](#)

[Right ON target: a new RAS-GTP inhibitor](#)

Ophthalmology

[Lens subluxation combined with parry-romberg syndrome: case report](#)

[Vitreopapillary Traction in Stickler Type IV COL9A1](#)

[Staircase Lamellar Macular Hole in a Male Patient Aged 54 Years](#)

[Association of myopia and astigmatism with postoperative ocular high order aberration after small incision lenticule extraction](#)



Paediatrics

[Effectiveness of Gerontechnology Empowerment Program on Awareness and Use of Mobile Apps Among Older Adults for Instrumental Activities of Daily Living: Protocol for a Cluster Randomized Controlled Trial](#)

[Evolution of the Innovative Therapies for Children With Cancer Consortium Trial Portfolio for Drug Development for Children With Cancer](#)

[Predictive value of laboratory indicators for in-hospital death in children with community-onset sepsis: a prospective observational study of 266 patients](#)

[Use of digital technologies for staff education and training programmes on newborn resuscitation and complication management: a scoping review](#)

Patient Experience

[Understanding the Impacts of Online Mental Health Peer Support Forums: Realist Synthesis](#)

[The patient experience of a postpartum readmission for hypertension: a qualitative study](#)

[Patient experience of emergency department triage: An integrative review](#)



Pharmacology

[Hexavalent DTaP/IPV/Hib/HepB combination vaccine: information for healthcare practitioners \(updated\)](#)

[The Utilization of Preoperative Steroids Safely Decreases the Risk of Postoperative Delirium in Geriatric Patients After Hip Fracture Surgery: A Systematic Review and Meta-analysis of Randomized Controlled Trials](#)

[Physician Antipsychotic Overprescribing Letters and Cognitive, Behavioral, and Physical Health Outcomes Among People With Dementia](#)

[The Utilization of Preoperative Steroids Safely Decreases the Risk of Postoperative Delirium in Geriatric Patients After Hip Fracture Surgery: A Systematic Review and Meta-analysis of Randomized Controlled Trials](#)

Primary Care

[Major private provider in 'serious breach' of NHS GP contracts](#)

[Once in a lifetime: Porphyria](#)

[NHS England to expand use of virtual wards after positive evaluation](#)



Seniors and Aging

[Family Involvement in the Care of Hospitalized Older Adults: Protocol for a Qualitative Evidence Synthesis](#)

[Study shows vicious cycle of protein clumping in Alzheimer's disease and normal aging](#)

[Short Courses of Antibiotics for Patients with Ventilator-Associated Pneumonia](#)

[Local vs. General Anesthesia for Elective Endovascular AAA Repair](#)



Sexual Health

[Sexual self-concept and intimacy in context of vaginismus: A case-control study](#)

[Integration of cervical cancer screening into healthcare facilities in low-and middle-income countries: A scoping review](#)

[A Route to Resourcing: Improvisational Expressive Arts Dismantle Barriers to Sexual and Reproductive Health: A Literature Review](#)

[Age-related factors associated with intention to initiate pre-exposure prophylaxis among cisgender women in Washington DC](#)

[Human antibody signatures towards the Chlamydia trachomatis major outer membrane protein after natural infection and vaccination](#)

Sleep Medicine

[Assessment of Sleep Parameters in Adults with Persistent Post-Concussive Symptoms](#)

[Unveiling the Psychological Dimensions of Adolescent Sleep: Insights from Screen Time Research](#)

[Association of Healthy Lifestyle with Self-reported Sleep Disordered Breathing: a Cross-sectional Study](#)

[Executive function performance in children and adolescent patients with narcolepsy type 1](#)



Sports Medicine/Fitness

[Return to play after head injury in adolescent sports: evaluating football versus other sports](#)

[Pedagogical approaches to health-related physical education \(PE\) in the context of digitalisation—a scoping review](#)

[The impact of extreme heat on mass-gathering sporting events: implications for Australia and other countries](#)

Surgery

[Neoadjuvant, perioperative, or adjuvant immunotherapy in resectable non-small cell lung cancer: How do I choose? Importance of immune biomarkers and molecular testing](#)

[Predicting therapeutic response to neoadjuvant immunotherapy based on an integration model in resectable stage IIIA \(N2\) non-small cell lung cancer](#)

[Evaluation of sex differences in the receipt of concomitant atrial fibrillation procedures during nonmitral cardiac surgery](#)

[Predictors of prolonged hospital stay after segmentectomy](#)

Vaping/Smoking



[Effect of Adding Personalized Instant Messaging Apps to a Brief Smoking Cessation Model in Community Smokers in Hong Kong: Pragmatic Randomized Clinical Trial](#)

[Characteristics of early complications in isolated primary anterior cruciate ligament reconstruction surgery](#)

[The longitudinal analysis for the association between smoking and the risk of depressive symptoms](#)

World Health Organisation

[WHO prequalifies new dengue vaccine](#)

[Governments agree to continue their steady progress on proposed pandemic agreement ahead of the World Health Assembly](#)

[New guidance aims to reduce bloodstream infections from catheter use](#)

Wound Management

[A novel conductive microtubule hydrogel for electrical stimulation of chronic wounds based on biological electrical wires](#)

[Risk factors for malnutrition in patients with diabetic foot ulcer and its association with prolonged length of hospitalization](#)

[Content of a wound care mobile application for newly graduated nurses: an e-Delphi study](#)

[Exploring the Efficacy of Selected Allografts in Chronic Wound Healing: Evidence from Murine Models and Clinical Data for a Proposed Treatment Algorithm](#)

[Foot care intervention delivered by community health worker \(CHWs\): A scoping review](#)

SOCIAL AND COMMUNITY CARE

[Media reporting of the family courts: a social worker's reflections](#)

[Social workers reject council offer to settle dispute after more than 40 days of strike action](#)

[How effective is information sharing in child protection cases?](#)

[Working with Gypsy and Traveller communities: tips for positive practice](#)

[What About Social Justice? Wage Equity for Social Workers](#)

[Social workers doing more with less, seeing increased need and weighed down by admin, finds health check](#)

[Ten years of the Care Act 2014: 'the right legislation, undermined by a lack of funding'](#)

[Agency social work price caps will not come into force until spring 2025](#)

[Council staff in Scotland face real-terms pay cut, warns union as it prepares strike consultation](#)

[How staff support ensures fantastic outcomes for children and families](#)

[Your Social Work Career Coach — A Message for Our Social Work Graduates: Your Legacy Starts Here](#)

[Councils invited to sign up to scheme to highlight racial inequalities in social care workforce](#)

[Revised MCA code of practice 'still under discussion' two years after consultation on changes](#)

[Social Care Online library closes after almost 20 years](#)

[DHSC launches £16m fund to tackle exploitation of overseas care staff](#)

[How effective are case reviews in improving safeguarding practice?](#)

[Book Review: Social work for poverty alleviation by Deping Xiang](#)

Key Resources

[e-Learning](#)

[Social Care Online](#)

[Research Register for Social Care](#)

[Social Care Research Ethics Committee](#)

HEALTH MANAGEMENT

[Smoking bans, slippery slopes and Sylvester Stallone](#)

[Listen to mums: ending the postcode lottery on perinatal care](#)

[MatDAT: maternity disadvantage assessment tool – assessing wellbeing and social complexity in the perinatal period](#)

[Rapid evidence review: tackling inequalities through the regulation of services and organisations](#)

[Addressing health inequalities across allied health professional \(AHP\) services: a guide for AHP system leaders](#)

[International recruitment fund for the adult social care sector 2024 to 2025: guidance for local authorities](#)

[How would clinicians use time freed up by technology?](#)

[The role of integrated care systems in improving dementia diagnosis](#)

[Are you the director of a place-based partnership?](#)

[England's widening health gap: local places falling behind](#)

[How influential is public health within local health systems?](#)

[Co-production and engagement with communities as a solution to reducing health inequalities](#)

[Be well, care well](#)

[The latest proposals on health devolution: solution or provocation?](#)

[Prevention, population health and prosperity: a new era in devolution](#)

[How has the role of the private sector changed in UK health care?](#)

[The Care Act 2014: ten years on from Royal Assent](#)

[10-year strategic plan for the drug and alcohol treatment and recovery workforce \(2024–2034\)](#)

[Policies for better mental health: the case for a mental health policy test](#)

[Health creation: for now and future generations](#)

[Adult mental health social care: report from the findings of the 2023 insight survey](#)

[Prevention, population health and prosperity: a new era in devolution](#)

[Flexible shift patterns in a community district nursing team](#)

[Making links between health and care and further education](#)

[Dental Recruitment Incentive Scheme 2024/25: guidance for dental practices and dentists](#)

[Research demand signalling: mental health nursing](#)

BMJ Evidence Updates

[Patient and caregiver characteristics associated with differential use of primary care for children and young people in the UK: a scoping review](#)

[What is current care for people with Long COVID in England? A qualitative interview study](#)

[Time to first birth and its predictors among reproductive-age women in Ethiopia: multilevel analysis using shared frailty model](#)

[Investigating consumer preferences and experiences of telehealth services in Australian allied health practice: a study protocol](#)

[Explorative observational study of Dutch patient-clinician interactions: operationalisation of personal perspective elicitation as part of shared decision-making in real-life audio-recorded consultations](#)

[Effect of metformin use on graft and patient survival in kidney transplant recipients with type 2 diabetes: a systematic review protocol](#)

[An observational study protocol to capture, validate and characterise lucid episodes in people living with advanced dementia receiving hospice care](#)

[DARE-ISC model for prediction of 1-year ischaemic stroke risk in the general population and atrial fibrillation patients: a Danish nationwide cohort study](#)

[DIALOR \(DIgitAL cOaching for fRailty\): protocol for a single-arm mixed-methods feasibility study of a digital health coaching intervention for older people with frailty in primary care](#)

[Anaesthetic and perioperative considerations for extrapleural pneumonectomy and extended pleurectomy/decortication: a scoping review protocol](#)

[Effectiveness of combining prevention psychological interventions with interventions that address the social determinants of mental health in low and middle-income countries: protocol of a systematic review and meta-analysis](#)



Cochrane

[Interventions with pregnant women, new mothers and other primary caregivers for preventing tooth decay in young children](#)

[Endovascular rectal artery embolisation \(RAE\) for symptomatic haemorrhoids](#)

[Do psychological interventions reduce depression and anxiety in patients with coronary heart disease, heart failure or atrial fibrillation compared to no psychological intervention?](#)

[Herbal medicines to prevent dental caries](#)

[Weight reduction interventions for the management of atrial fibrillation in overweight and obese people](#)

[Early versus late tracheostomy in people with multiple trauma](#)

[Parallel use of low-complexity automated nucleic acid amplification tests and lateral flow urine lipoarabinomannan assays to detect tuberculosis disease in adults and adolescents living with HIV](#)

[Parallel use of low-complexity automated nucleic acid amplification tests on respiratory samples and stool with or without lateral flow lipoarabinomannan assays to detect pulmonary tuberculosis disease in children](#)

[Oral vitamin A supplements to prevent acute upper respiratory tract infections in children up to seven years of age](#)

[Does shared decision-making help women when making decisions about whether or not to participate in breast cancer screening?](#)

[Is magnesium sulphate for women at risk of preterm birth better than placebo for protecting their babies' brains?](#)



NICE Clinical Knowledge Summaries provides primary care practitioners with a readily accessible summary of the current evidence base and practical guidance on best practice in respect of over 300 common and/or significant primary care presentations.

The service is being regularly maintained and upgraded as and when significant new evidence emerges and up to 10 new topics will be added each year. You can access the service [here](#).

National Institute for Health Research (NIHR) Health Technology Assessment

[How do community first responders help in an emergency?](#)

[Why do South Asian people self-harm?](#)

DoH Press Releases/New Publications

[Press release: £85 million pledged to tackle antibiotic emergency](#)

[Press release: Government explores mediation with junior doctors' committee](#)

[Press release: People with HIV can now donate eggs or sperm to start a family](#)

[Press release: Patients to benefit from largest expansion of choice in a decade](#)

[Consultation outcome: Proposals to expand access to take-home naloxone supplies](#)

[Speech: Health and Social Care Secretary speech at birth trauma APPG](#)

[Open consultation: Provisional registration for overseas-qualified dentists](#)

[Guidance: Good manufacturing practice and good distribution practice](#)

[Press release: Government to make medicines dispensing more efficient](#)

[Press release: 350 extra medical school places allocated in NHS training boost](#)

LIBRARY "BITS AND PIECES"

Published recently? Completed a research project?

Tell us about it! Fill out our publication or research repository form by clicking [here](#) and we'll display your work on our website

[Publication repository](#)

[Research repository](#)

The above current awareness bulletin has been produced by Keyll Darree Library and Information Service. We aim to produce the bulletin every week. If you need any help locating or accessing any of the items included in this issue, please contact the library staff on 642993/642974.

As usual, we welcome any feedback, so please let us know if you have any comments about format, content, length, arrangement or indeed, any other observations. If you know of anyone else who might like to receive the bulletin, or you would like your name removed from the distribution list, again, please let us know.

Check out our library website at www.librarykeylldarree.gov.im for details of all our services, facilities and any forthcoming events.