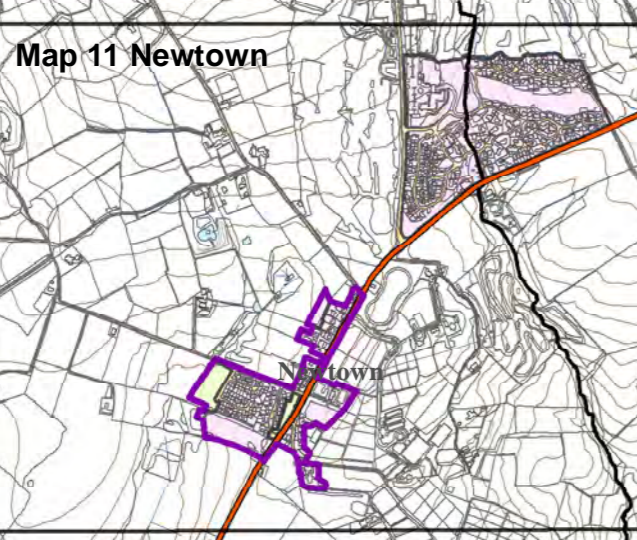
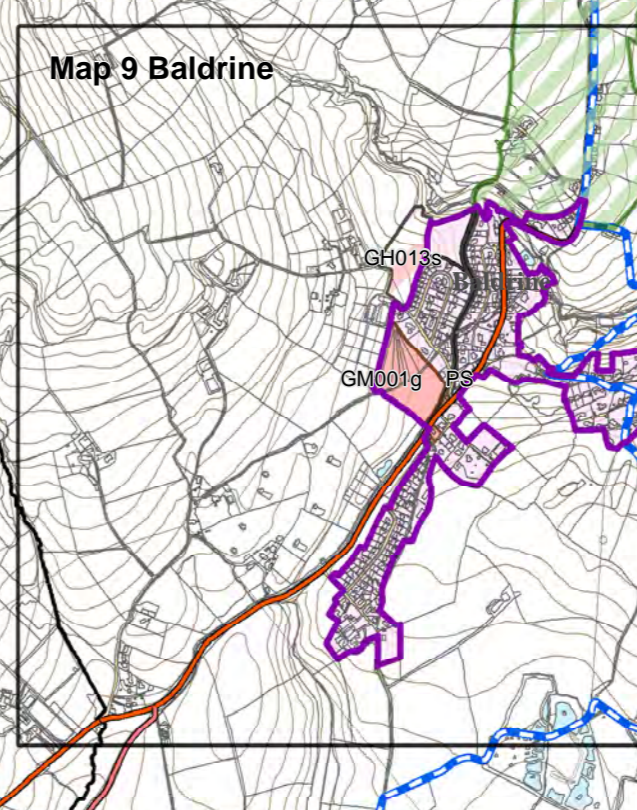
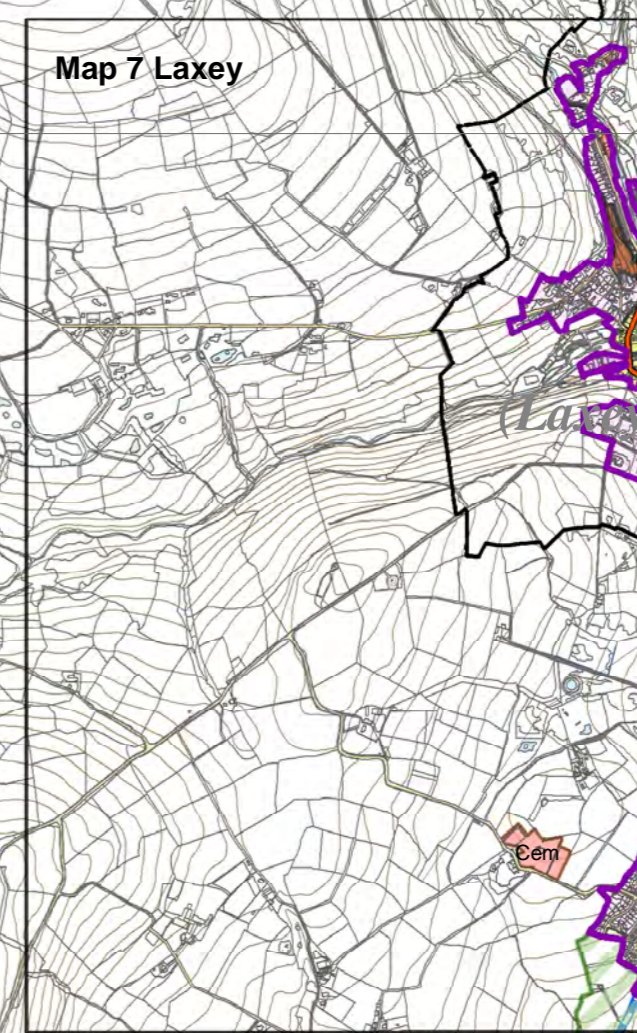
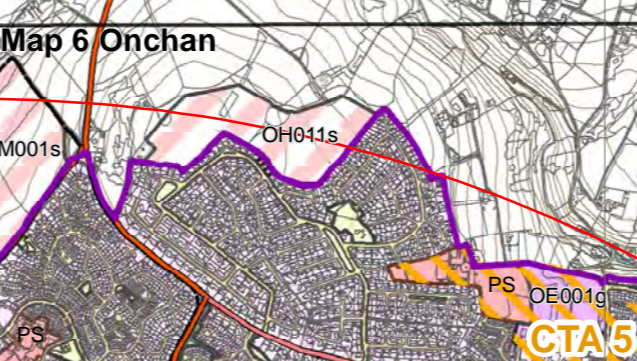
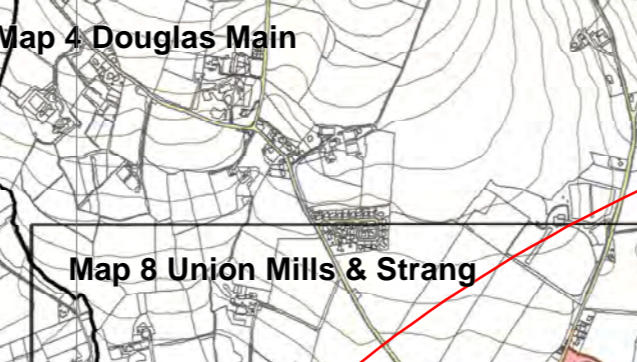
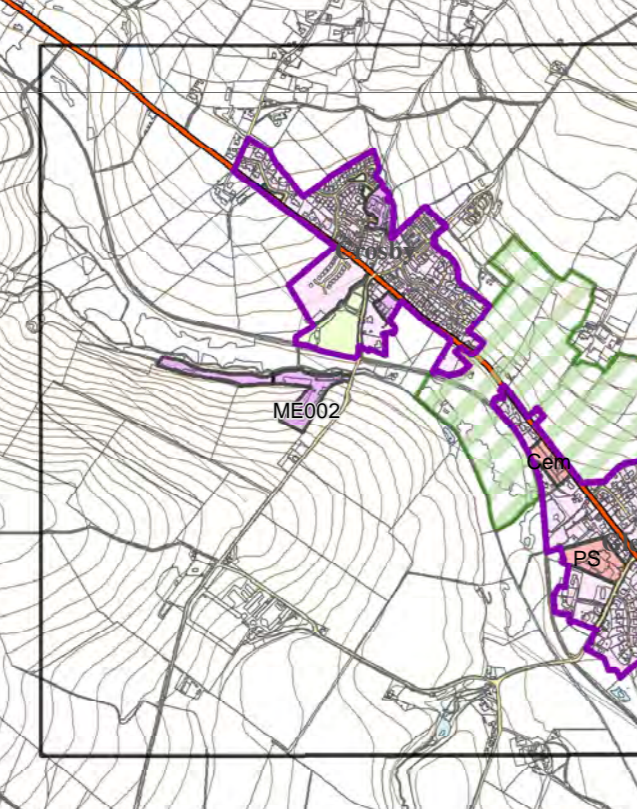
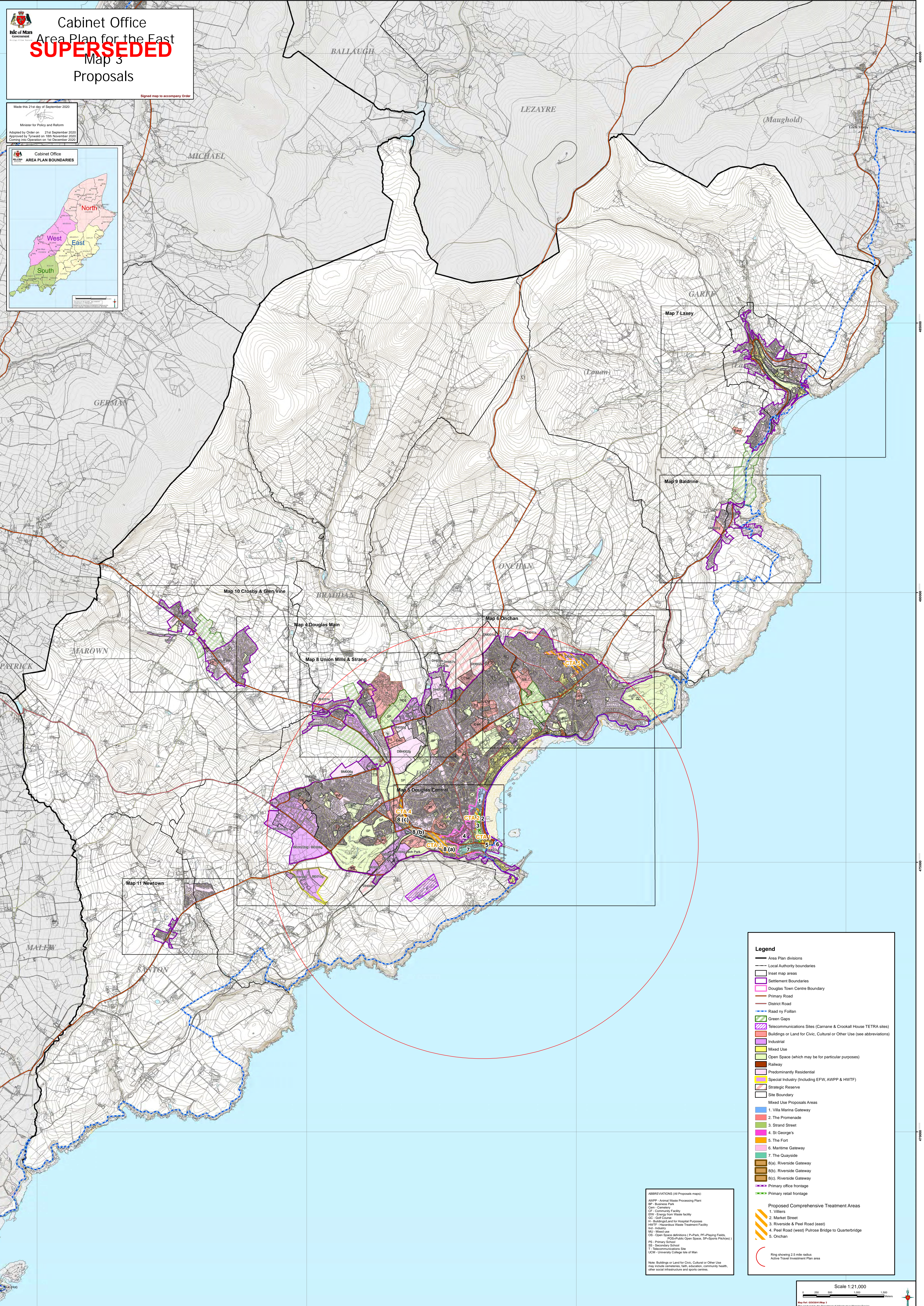
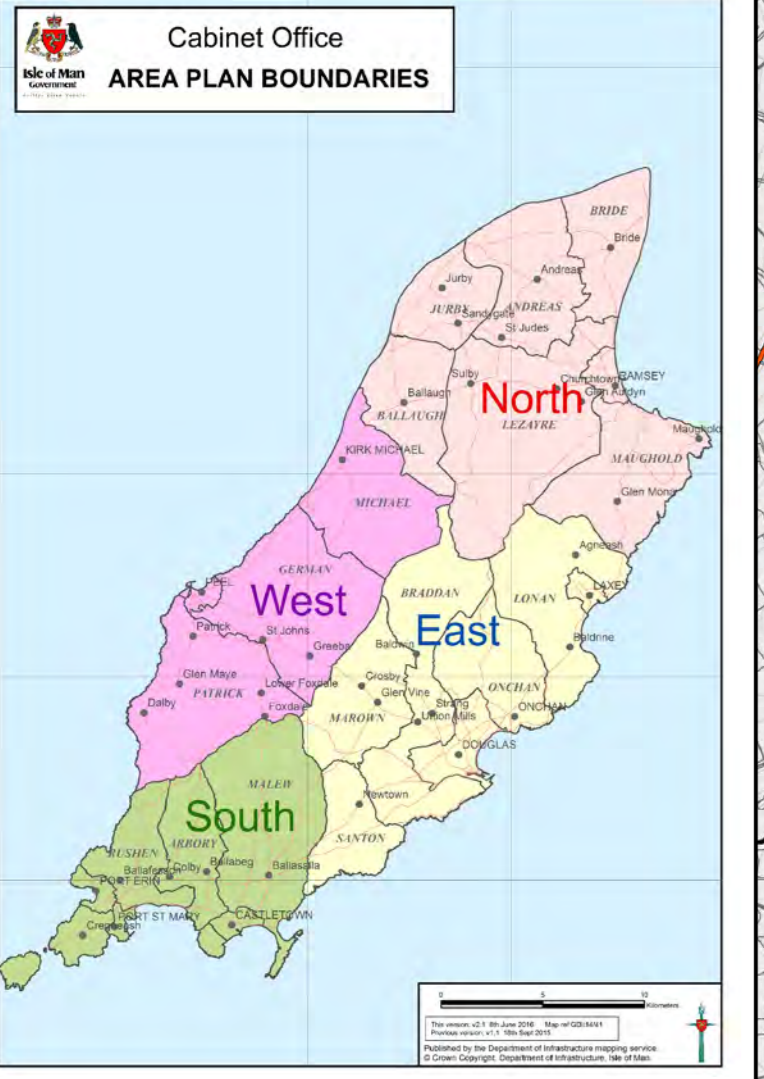


Cabinet Office
 Area Plan for the East
SUPERSEDED
 Map 3
 Proposals

Made this 21st day of September 2020
 Minister for Policy and Reform
 Adopted by Order on 21st September 2020
 Approved by Tynwald on 18th November 2020
 Coming into Operation on 1st December 2020



ABBREVIATIONS (All Proposals maps):
 AWPP - Animal Waste Processing Plant
 BP - Business Park
 Com - Cemetery
 CF - Community Facility
 ERW - Energy from Waste facility
 GC - Golf Course
 H - Buildings/Land for Hospital Purposes
 HWTF - Hazardous Waste Treatment Facility
 Ind - Industry
 Mix - Mixed Use
 OS - Open Space definitions (P-Park, PF-Playing Fields, PPSu-Other Open Spaces, SP-Sports Pastures)
 PS - Primary School
 SS - Secondary School
 T - Telecommunications Site
 UCLM - University College Isle of Man
 Note: Buildings or Land for Civic, Cultural or Other Use may include cemeteries, bath, education, community health, other social infrastructure and sports centres.

Legend

- Area Plan divisions
- Local Authority boundaries
- Inset map areas
- Settlement Boundaries
- Douglas Town Centre Boundary
- Primary Road
- District Road
- Road w/ Follan
- Green Gaps
- Telecommunications Sites (Camane & Crookall House TETRA sites)
- Buildings or Land for Civic, Cultural or Other Use (see abbreviations)
- Industrial
- Mixed Use
- Open Space (which may be for particular purposes)
- Railway
- Predominantly Residential
- Special Industry (Including EFW, AWPP & HWTF)
- Strategic Reserve
- Site Boundary

Mixed Use Proposals Areas

- 1. Villa Marina Gateway
- 2. The Promenade
- 3. Strand Street
- 4. St George's
- 5. The Fort
- 6. Maritime Gateway
- 7. The Quayside
- 8(a). Riverside Gateway
- 8(b). Riverside Gateway
- 8(c). Riverside Gateway
- Primary office frontage
- Primary retail frontage

Proposed Comprehensive Treatment Areas

- 1. Villiers
- 2. Market Street
- 3. Riverside & Peel Road (east)
- 4. Peel Road (west) Pulrose Bridge to Quarterbridge
- 5. Onchan

Ring showing 2.5 mile radius
 Active Travel Investment Plan area