



# Cabinet Office

## Area Plan for the East Proposals Map 5 Douglas Town Centre Showing Mixed Use Proposal Areas

Signed map to accompany Order

Made this 21st day of September 2020

Minister for Policy and Reform  
Adopted by Order on 21st September 2020  
Approved by Tynwald on 18th November 2020  
Coming into Operation on 1st December 2020

**Legend**

- Local Authority boundaries
- Settlement Boundaries
- Douglas Town Centre Boundary
- Road w/ Foilain
- Green Gaps
- Telecommunications Sites (Carnae & Crookall House TETRA sites)
- Buildings or Land for Civic, Cultural or Other Use (see abbreviations)
- Industrial
- Mixed Use
- Open Space (which may be for particular purposes)
- Railway
- Predominantly Residential
- Strategic Reserve
- Site Boundary

**Mixed Use Proposals Areas**

- 1. Villa Marina Gateway
- 2. The Promenade
- 3. Strand Street
- 4. St George's
- 5. The Fort
- 6. Maritime Gateway
- 7. The Quayside
- 8(a). Riverside Gateway
- 8(b). Riverside Gateway
- 8(c). Riverside Gateway
- Primary office frontage
- Primary retail frontage

**Proposed Comprehensive Treatment Areas**

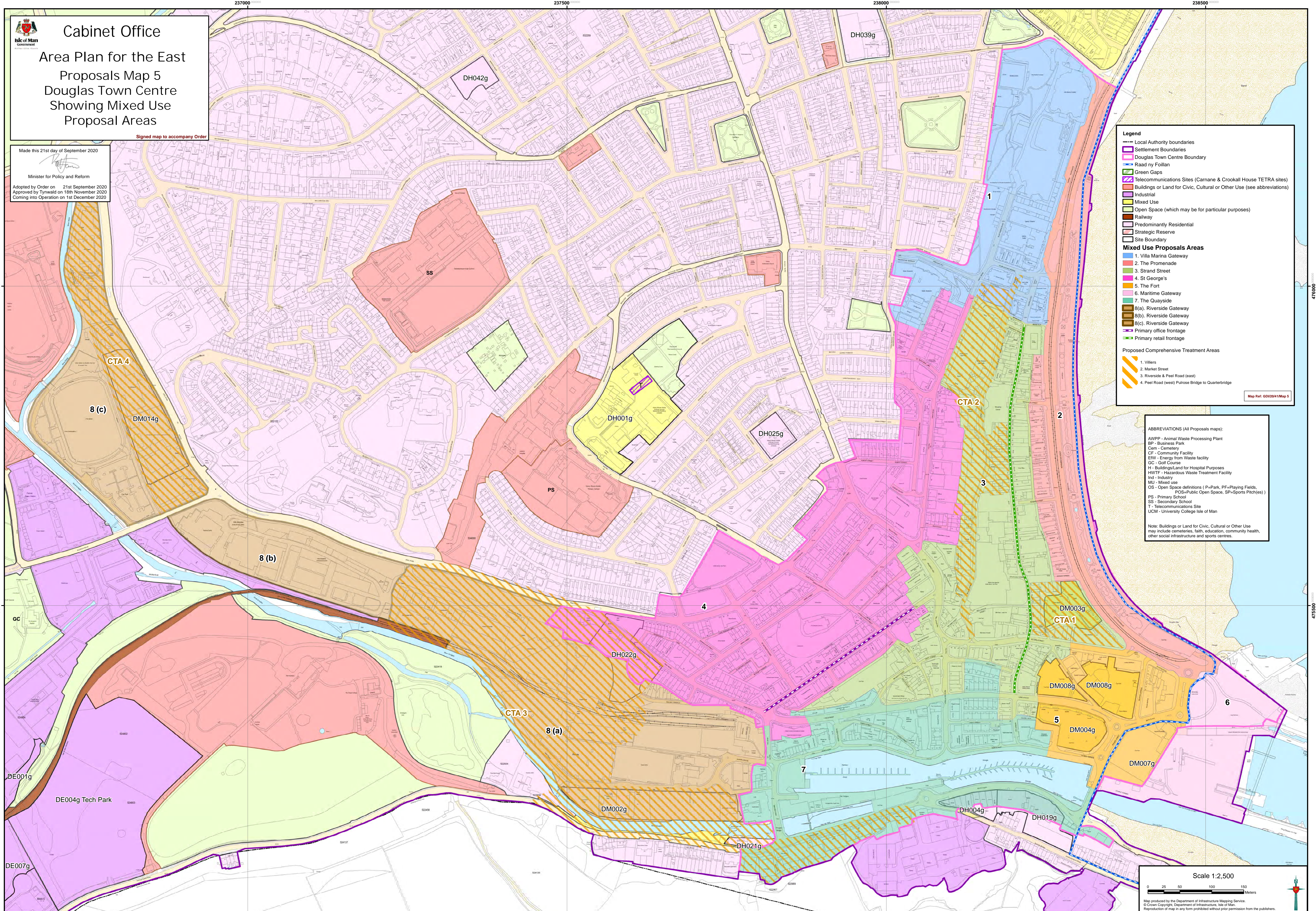
- 1. Villiers
- 2. Market Street
- 3. Riverside & Peel Road (east)
- 4. Peel Road (west) Pulrose Bridge to Quarterbridge

Map Ref: GD/20/14/Map 5

**ABBREVIATIONS (All Proposals maps):**

- AWPPP - Animal Waste Processing Plant
- BP - Business Park
- Cem - Cemetery
- CF - Community Facility
- EW - Energy from Waste facility
- GC - Golf Course
- H - Buildings/Land for Hospital Purposes
- HWTF - Hazardous Waste Treatment Facility
- Ind - Industry
- MU - Mixed use
- OS - Open Space definitions (P=Park, PF=Playing Fields, POS=Public Open Space, SP=Sports Pitch(es))
- PS - Primary School
- SS - Secondary School
- T - Telecommunications Site
- UCM - University College Isle of Man

Note: Buildings or Land for Civic, Cultural or Other Use may include cemeteries, faith, education, community health, other social infrastructure and sports centres.



Scale 1:2,500

Map produced by the Department of Infrastructure Mapping Service.  
© Crown Copyright, Department of Infrastructure, Isle of Man.  
Reproduction of map in any form prohibited without prior permission from the publishers.