

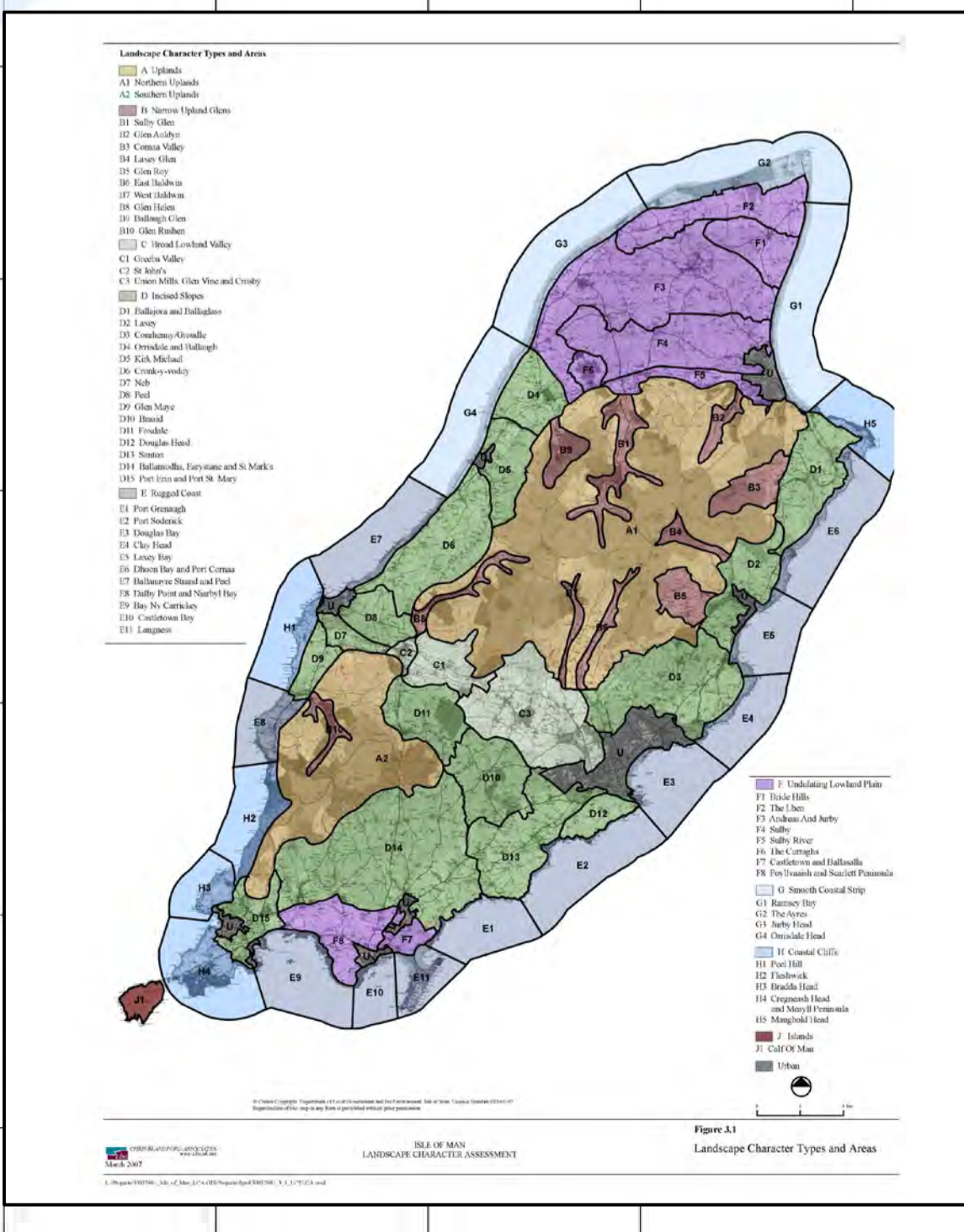
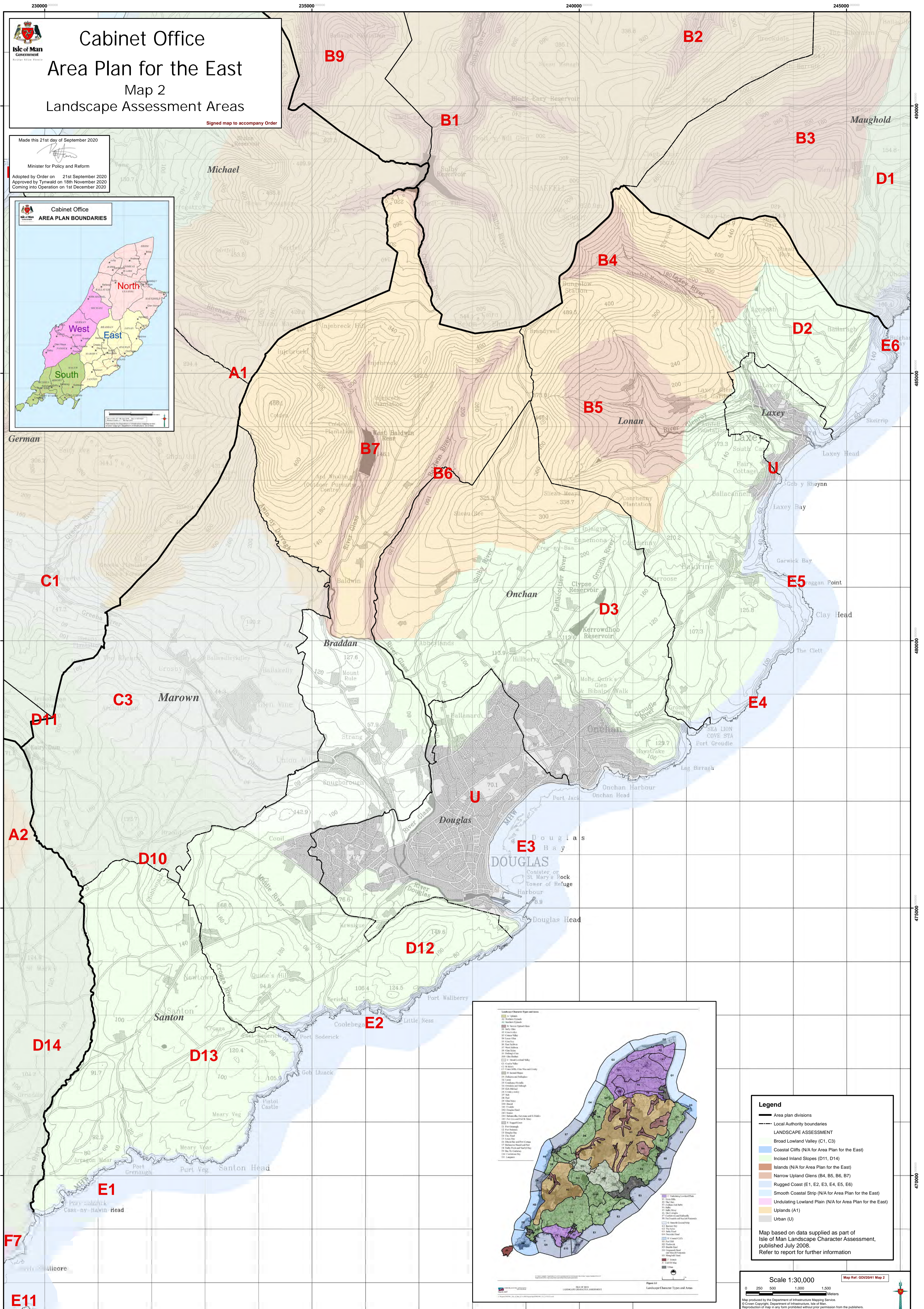
Cabinet Office
Area Plan for the East
 Map 2
 Landscape Assessment Areas

Signed map to accompany Order

Made this 21st day of September 2020

Minister for Policy and Reform

Adopted by Order on 21st September 2020
 Approved by Tynwald on 18th November 2020
 Coming into Operation on 1st December 2020



Legend

- Area plan divisions
- Local Authority boundaries
- LANDSCAPE ASSESSMENT
- Broad Lowland Valley (C1, C3)
- Coastal Cliffs (N/A for Area Plan for the East)
- Inland Slopes (D11, D14)
- Islands (N/A for Area Plan for the East)
- Narrow Upland Glens (B4, B5, B6, B7)
- Rugged Coast (E1, E2, E3, E4, E5, E6)
- Smooth Coastal Strip (N/A for Area Plan for the East)
- Undulating Lowland Plain (N/A for Area Plan for the East)
- Uplands (A1)
- Urban (U)

Map based on data supplied as part of Isle of Man Landscape Character Assessment, published July 2008.
 Refer to report for further information

Scale 1:30,000

Map Ref: GDI02041 Map 2

0 250 500 1,000 1,500 meters