

John C. ed u c a s Esq



130
Plan and Survey of
Scard
in the Parish of Rushen
the Property of
Mr. John Kenley

Scale of 3 Chains to One Inch

Contents			
No.	Chains	Links	Area
1	2	0	014
2	1	3	234
3	2	1	34
4	2	2	28
5	3	0	304
6	2	3	44
7	2	1	16
8	3	0	18
9	1	3	35
10	1	1	36
11	1	0	54
12	1	2	25
13	4	3	344
14	2	2	19
15	2	1	18
16	2	3	36
17	2	2	233
18	1	2	27
19	2	0	304
20	1	1	27
21	1	1	23
22	2	0	31
23	2	2	12
24	2	2	44
25	3	0	19
26	2	1	34
27	4	2	321
28	3	2	34
29	1	3	224
30	1	3	28
Fields			72
Basements &c			7
Total			79

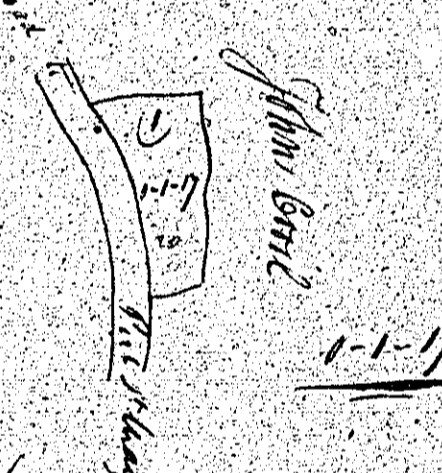
J. Howell of London

Fields
Basements &c
Total

ISLE OF MAN GOVERNMENT: GENERAL REGISTRY
TITHE PLANS: PARISH OF RUSHEN
Original coloured 1:30

There are no plans
numbered 137, 138, 139, 140,
141, 142 or 143

Plan 144
part of Bullappon
in the
Parish of Rjukan
according to
Mr. John Lunde
June 6th 1851

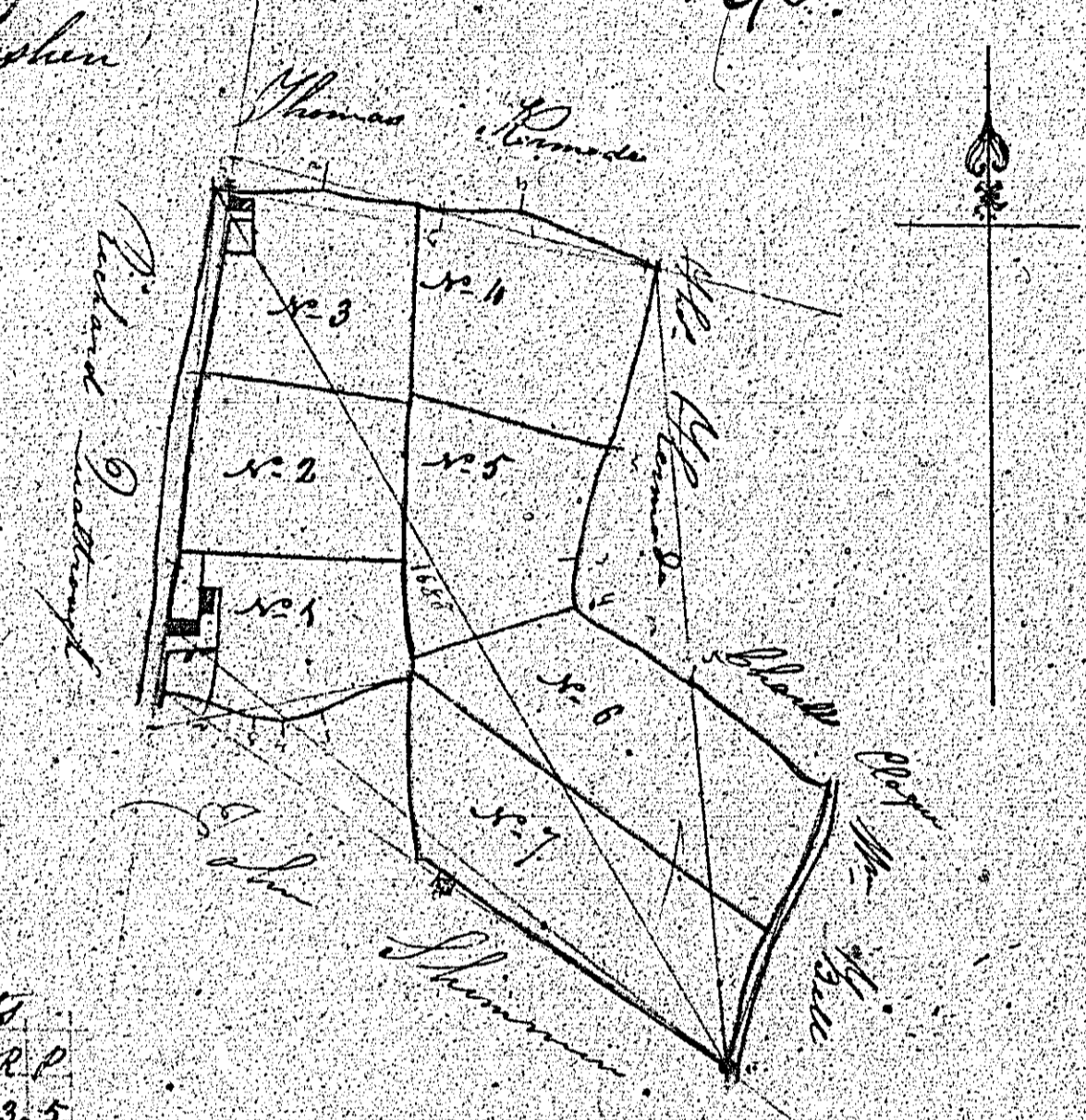


John Lunde
1-1-17

Three chains to each
Joseph Blake Esq.

Plan of the Property of
 John Lowey and Christ Rushen
 City of Quarterland
 John Watkinson a House and
 garden in corner of N.E. Q.
 145

145



Contents

	S. R. P.	
N. 1	0. 3. 5	
2	1. 0. 36	
3	1. 0. 0	
4	1. 0. 32	
5	1. 0. 5	
6	1. 2. 9	
7	1. 2. 14	
	8. 0. 25	15.
House and garden & easement	0. 0. 15	
Total	8. 1. 0. 30	

John Watkinson's
 House and garden 0. 0. 6

Scale of 3 Chains to an Inch

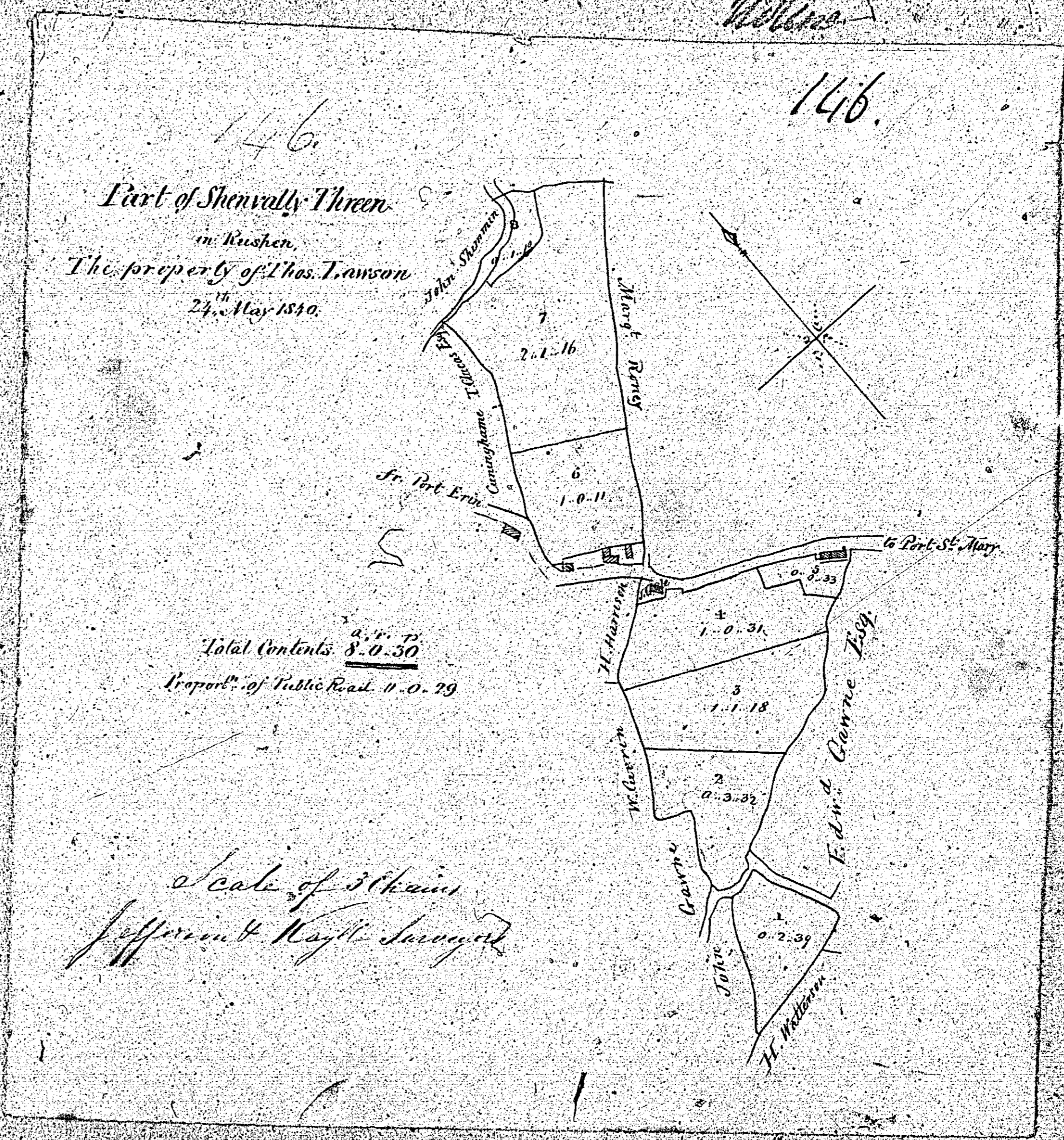
June 1860

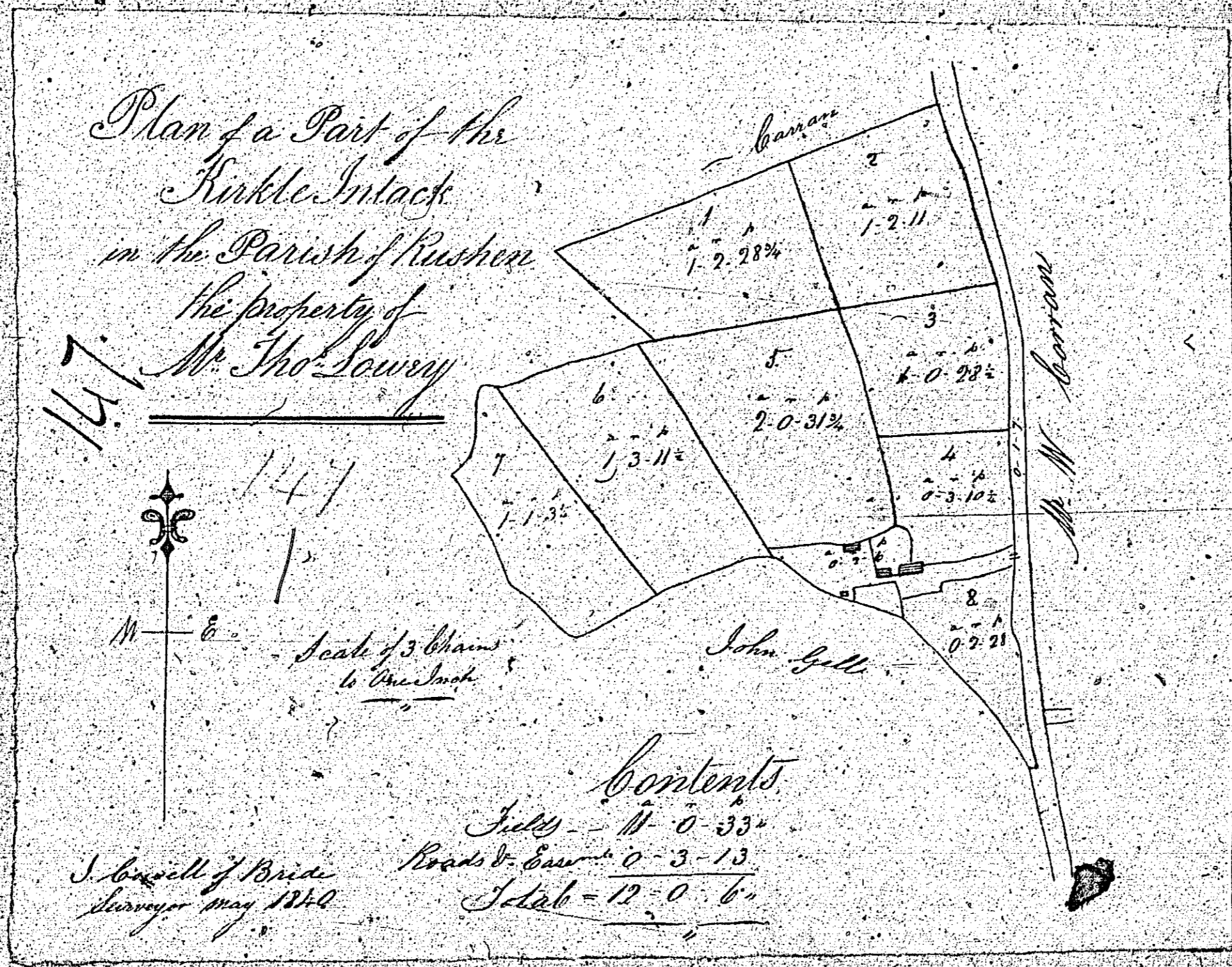
John Bullen (Surveyor)

146
Part of Shenvally Three
in Kushen
The property of Thos. Lawson
27th May 1830

Total Contents 8.0.50
Report of Public Road 0.0.29

Scale of 5 Chains
Jefferson & Knight Surveyors





ISLE OF MAN GOVERNMENT: GENERAL REGISTRY
 TITHE PLANS: PARISH OF RUSHEN
 Original coloured (decorative) 1:30