

Isle of Man Government: General Registry

PLANS DEPOSITED IN THE
ROLLS OFFICE
UNDER THE
TITHE COMMUTATION ACT
1839

PARISH OF PATRICK

Volume 1

(1 - 100)

Microfilm Data (IOM) Ltd., Alpine Mews,
Strathallan Lane, Onchan, Isle of Man, IM3 1NL

May 1997

NOTES

The plans have been filmed in their bound state

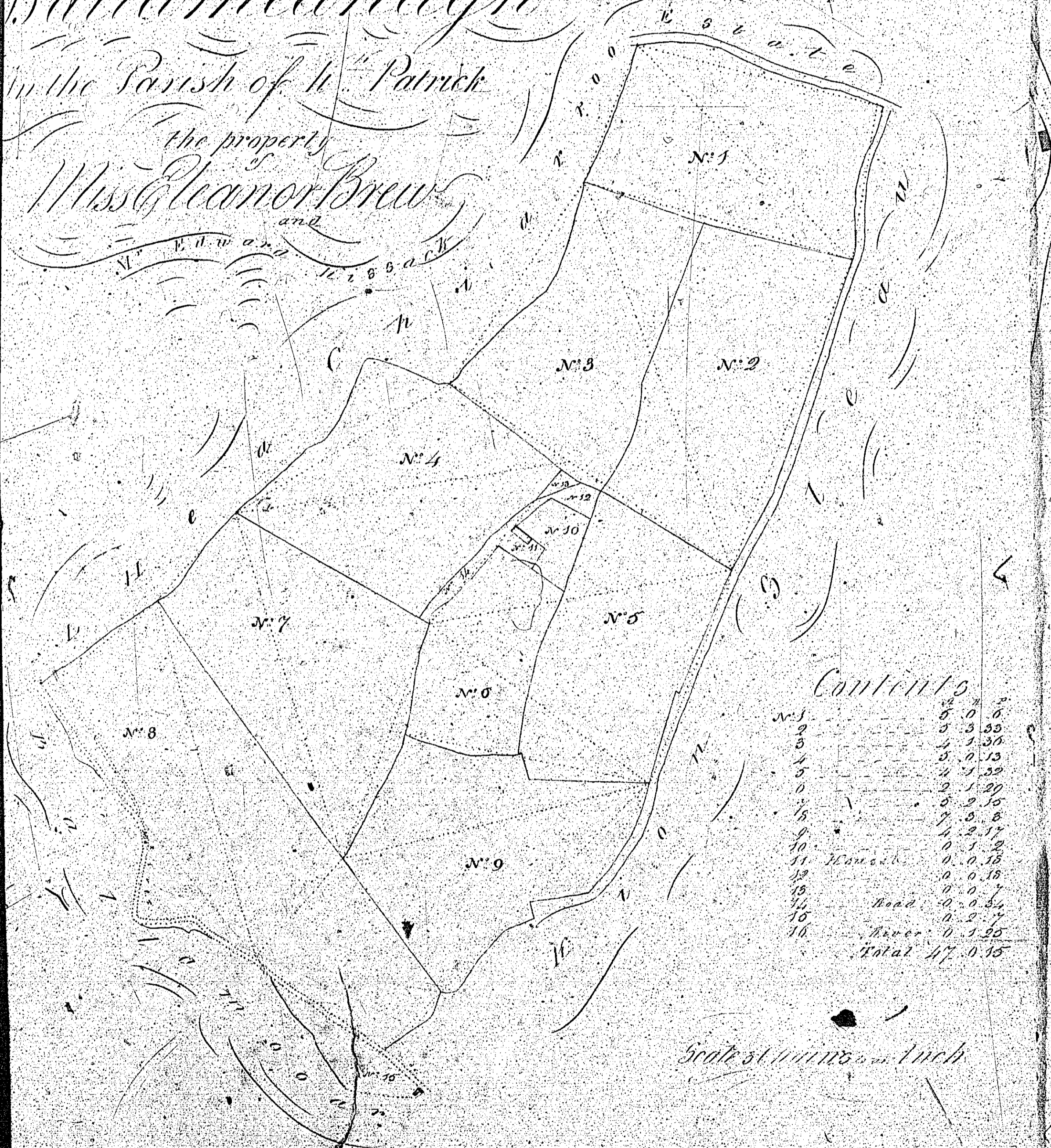
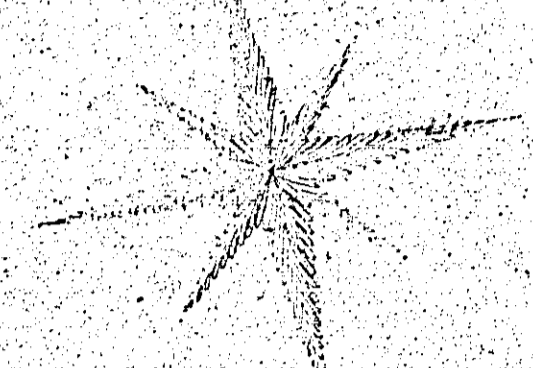
This will have caused some image distortion particularly where large plans go into the binding gutter and/or have been folded

Many of the larger plans are damaged

Where plans are coloured this has been noted; 'monochrome' indicates a single ink colour which may be black, brown or blue

START OF VOLUME

Plan
of the Estate of
Ballymeanagh
in the Parish of St. Patrick
the property
of Miss Eleanor Brew
and
Messrs. Edward and Thomas
Barrack



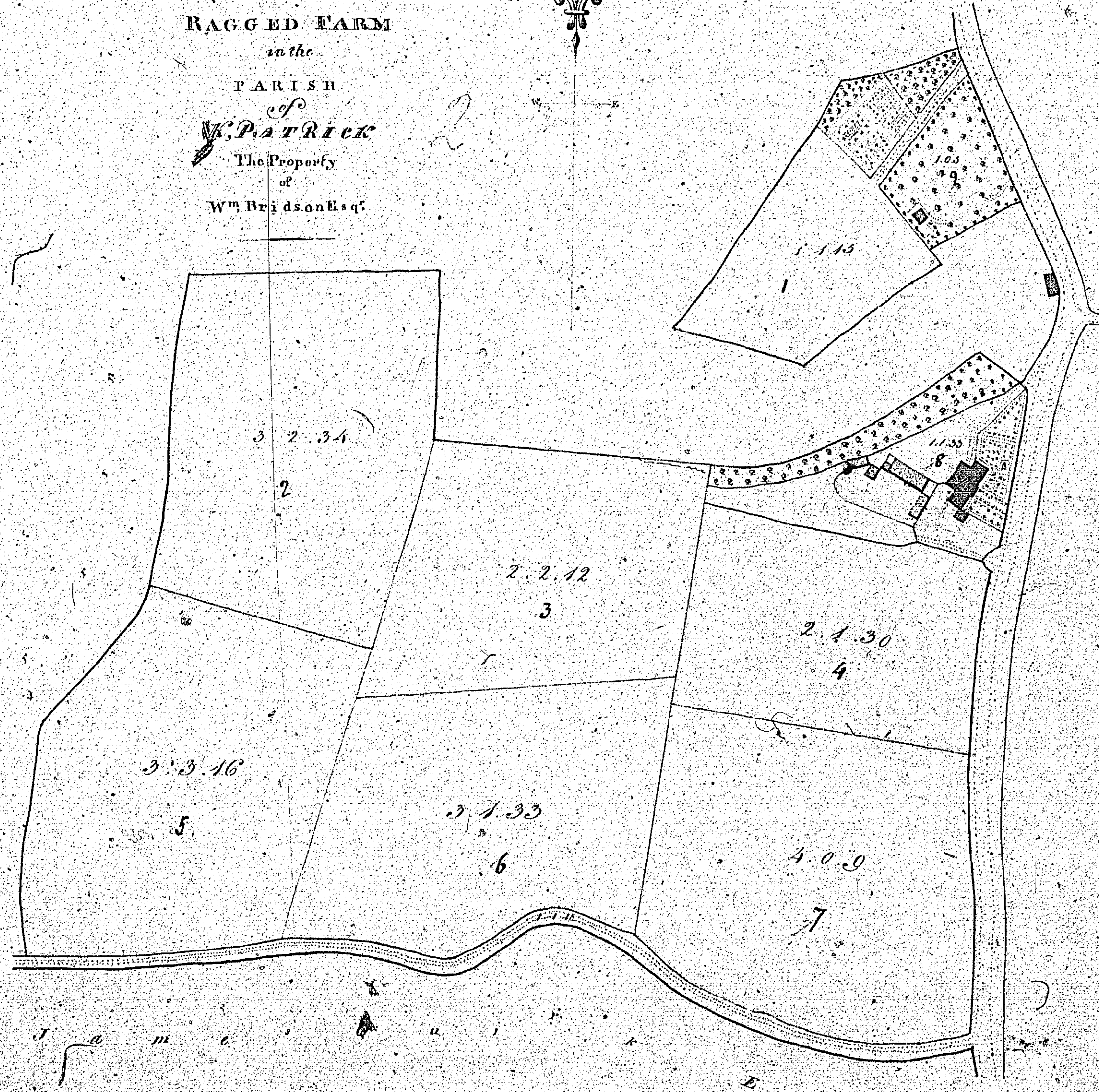
Contents

N°1	12
N°2	5
N°3	5
N°4	5
N°5	5
N°6	5
N°7	5
N°8	5
N°9	5
N°10	5
N°11	5
N°12	5
Manch	0.0.18
Head	0.0.18
Woods	0.0.18
Water	0.0.18
Total	47.0.18

Scale of 1000 to 1 Inch

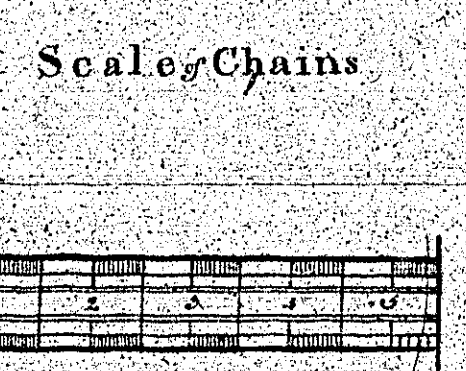
The Civil Survey of 1763

PLAN
of the
RAGGED FARM
in the
PARISH
of
W. Patrick
The Property
of
W^m Brisdant's etc

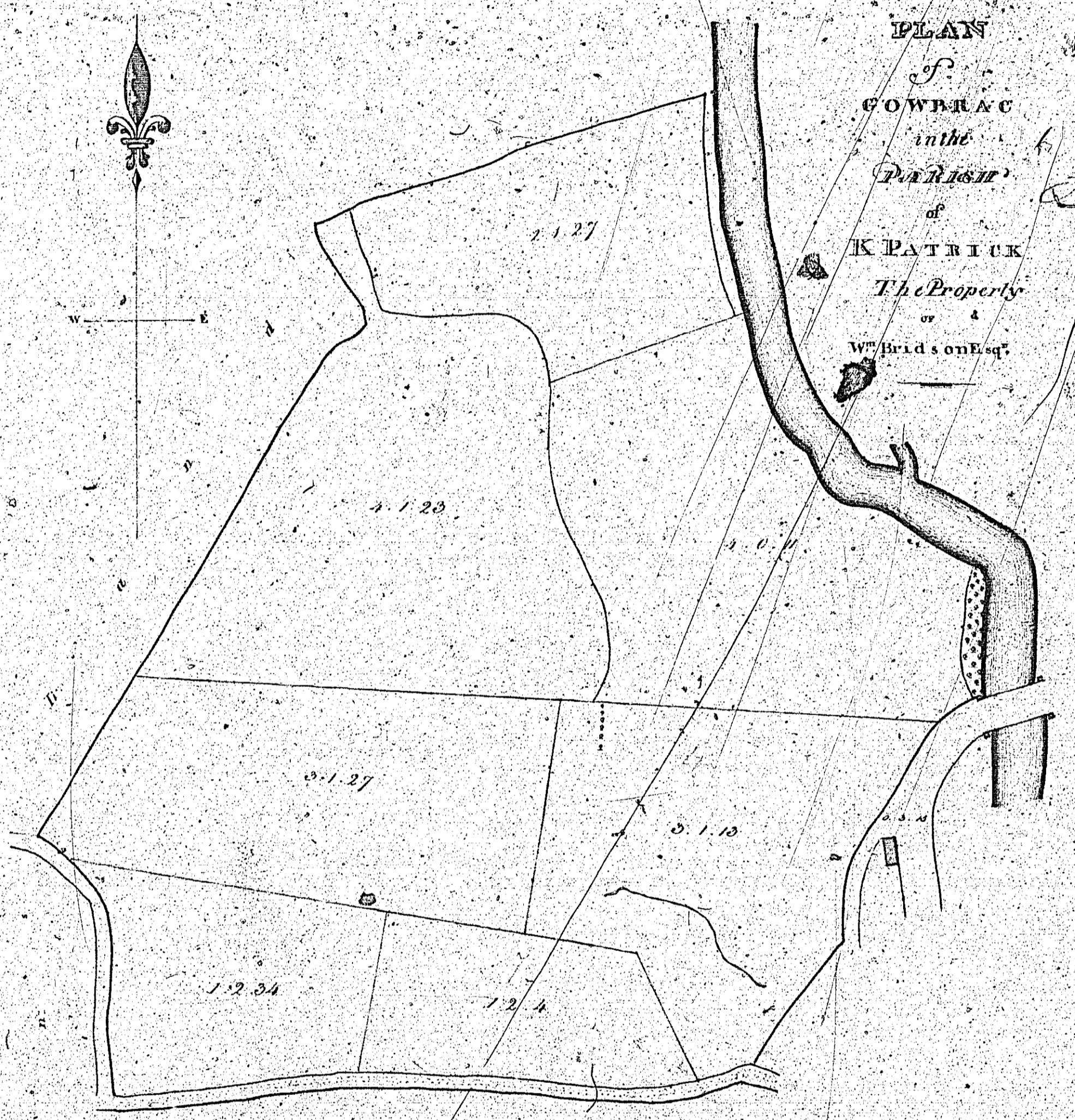


Contents

	a r p.
Fields	25, 5, 27
Roads	1, 1, 50
Total	26, 6, 37



3.



PLAN
 OF
 GOWBRAC
 in the
 PARISH
 of
 K PATRICK
 The Property
 of
 W^m Bridson Esq^r

Contents

	a. r. p.
Fields	20.3.10
Roads	0.5.10
Total	<u>21.2.34</u>

Scale of Chains

