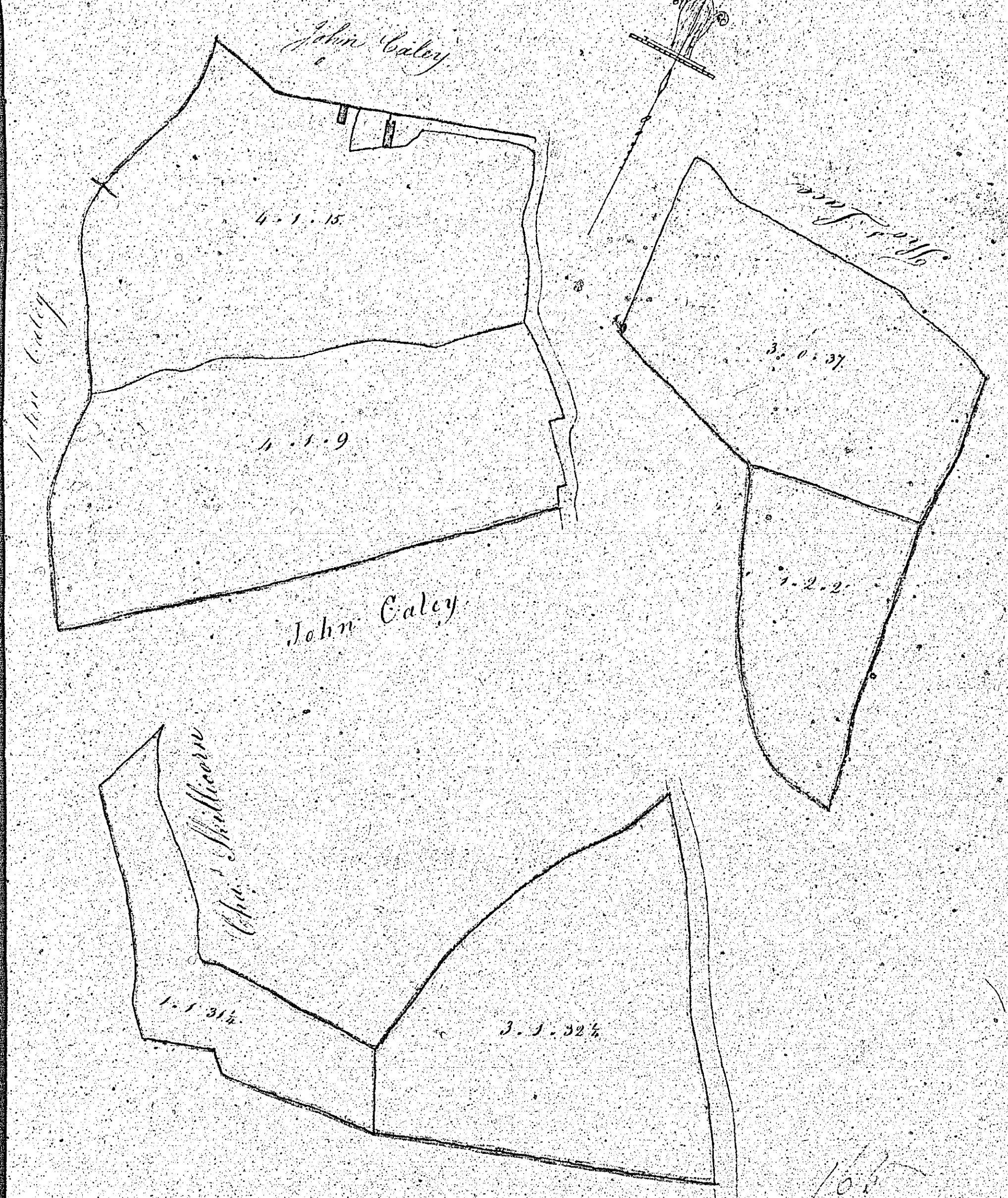


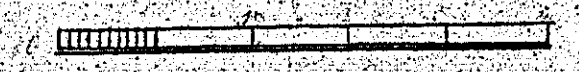
165.



CONTENTS

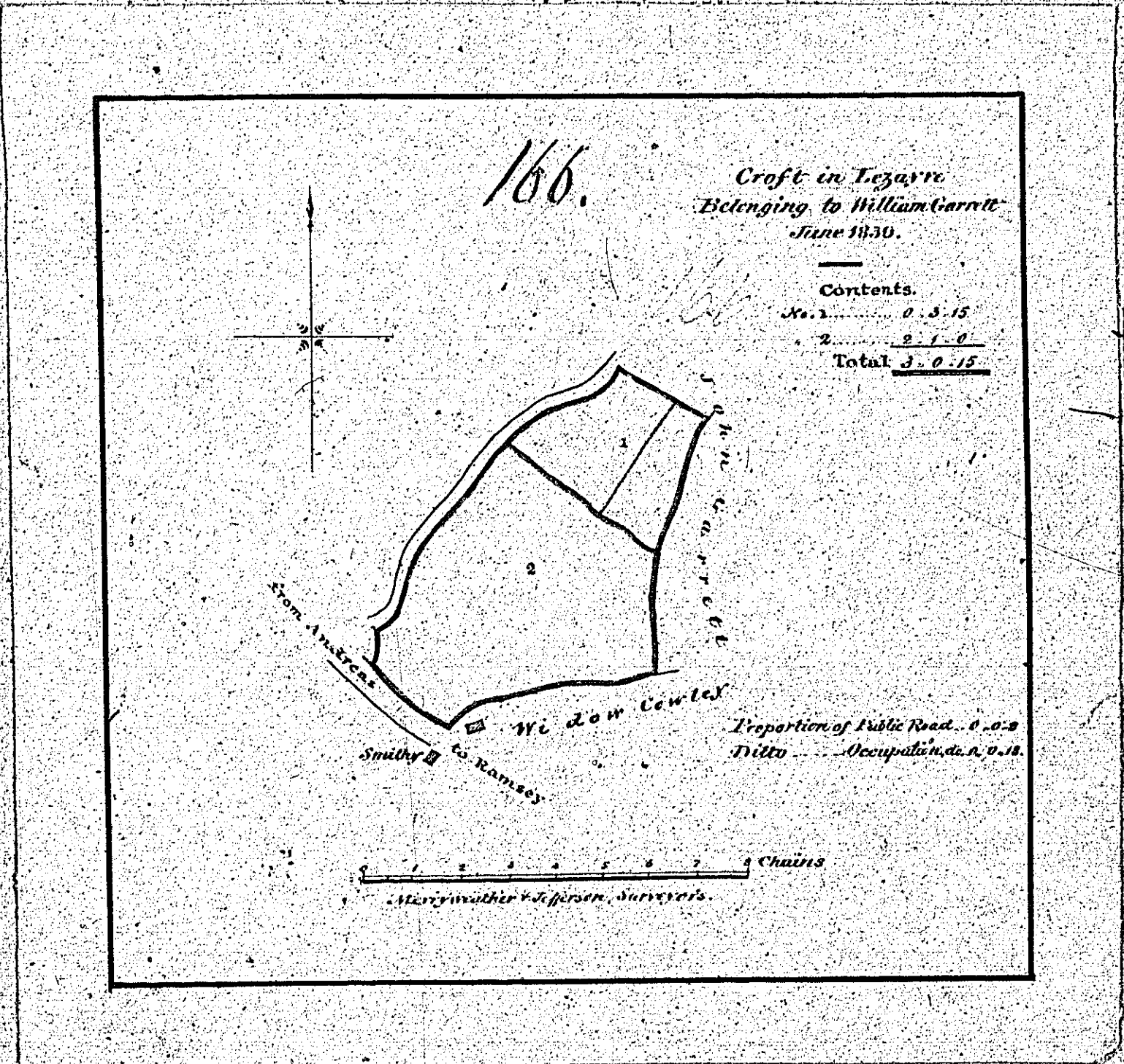
N ^o	ARP
1	1. 15
2	1. 37
3	1. 9
4	2. 2
5	1. 31
6	1. 32
Road and Casements	2. 12
Total	13. 1. 28

PLAN
and Survey of
T. GARRETT'S LANDS
Part of Ballacaley
QUARTERLAND & INTACK.
LEZAYRE



Daniel Suggs Sur. 1839.

Noticed

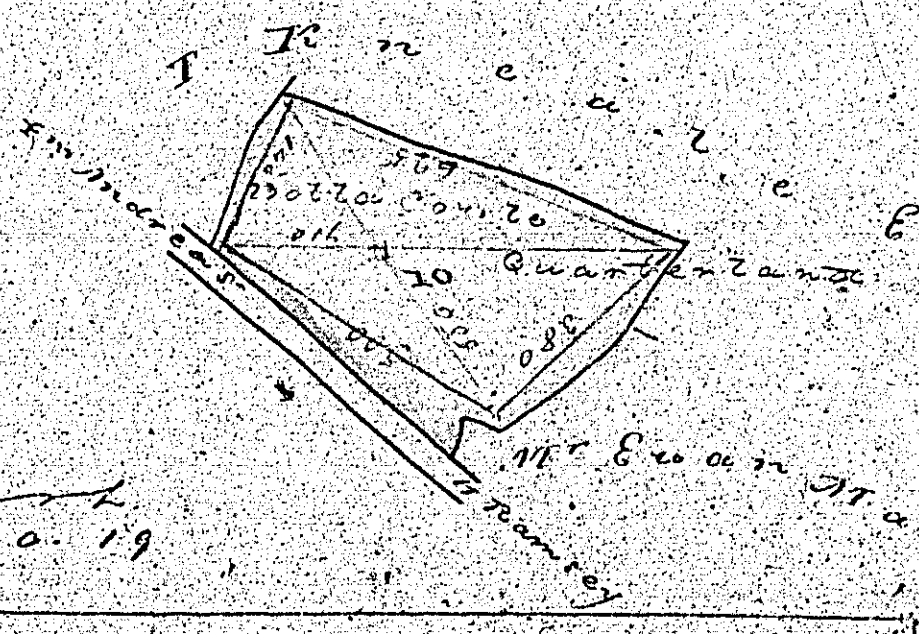
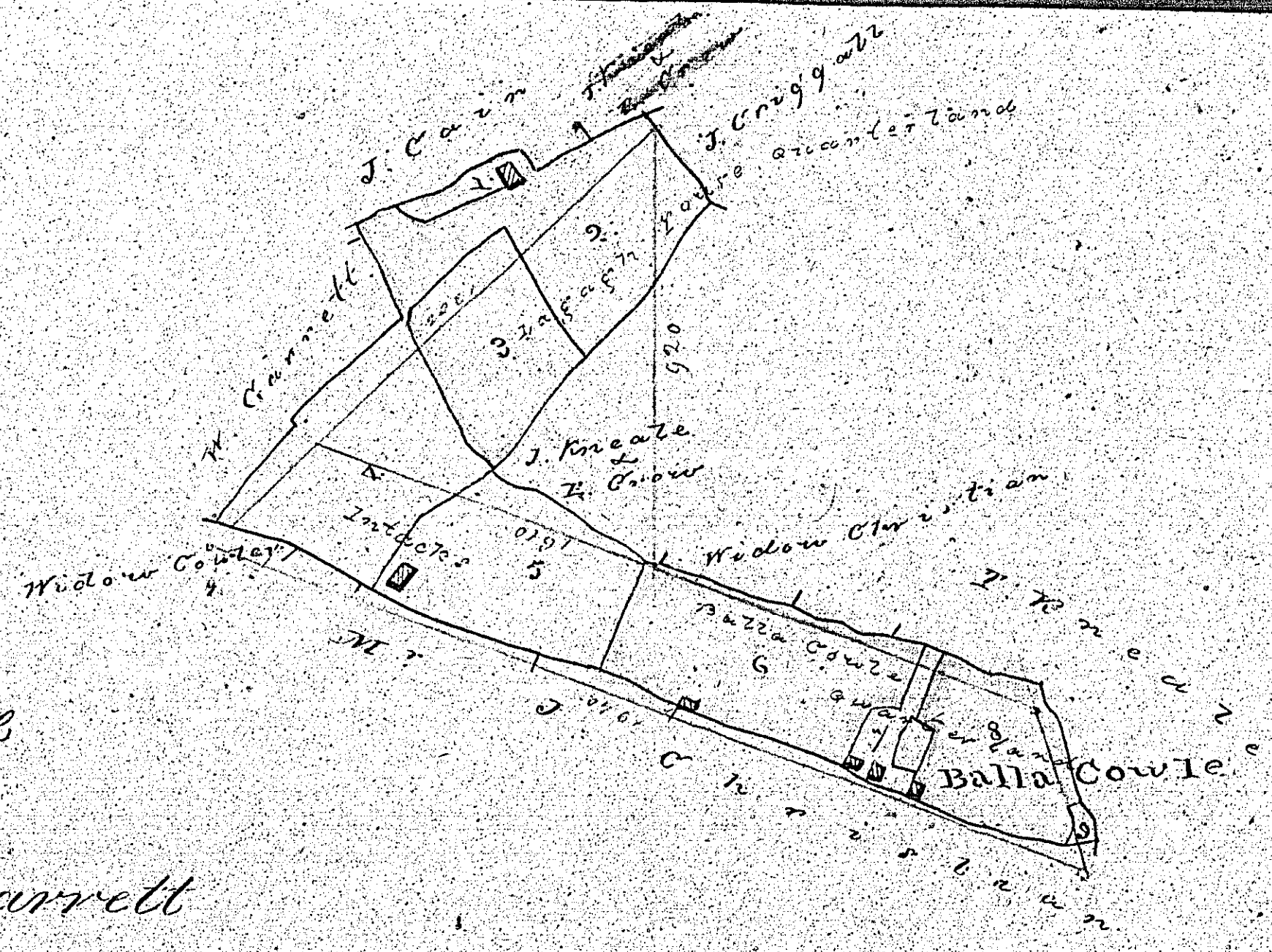


Contents

1	1.2.35
2	1.2.7
3	1.1.16
4	1.2.7
5	1.1.7
6	3.29
7	1.6
8	2.28
9	
10	

103

167
 Lexaure
 Colon 9/10
 Mr. John Garrett
 May 1839



Scale
 H. C. W. M. J. P. S. Q.
 Surveyor
 Ramsay

Preparation of Public Road 0-0-19

P. M. Munnell's Land
A. H. C.
Main Road
Plan and Survey of part of
Lands in the Parish of
St. Andrew, in the County of
Middlesex, by J. H. Munnell
May 27th 1839.
165. *Witnessed*
Per J. H. Munnell
Per J. H. Munnell
Per J. H. Munnell

Unsurveyed

169

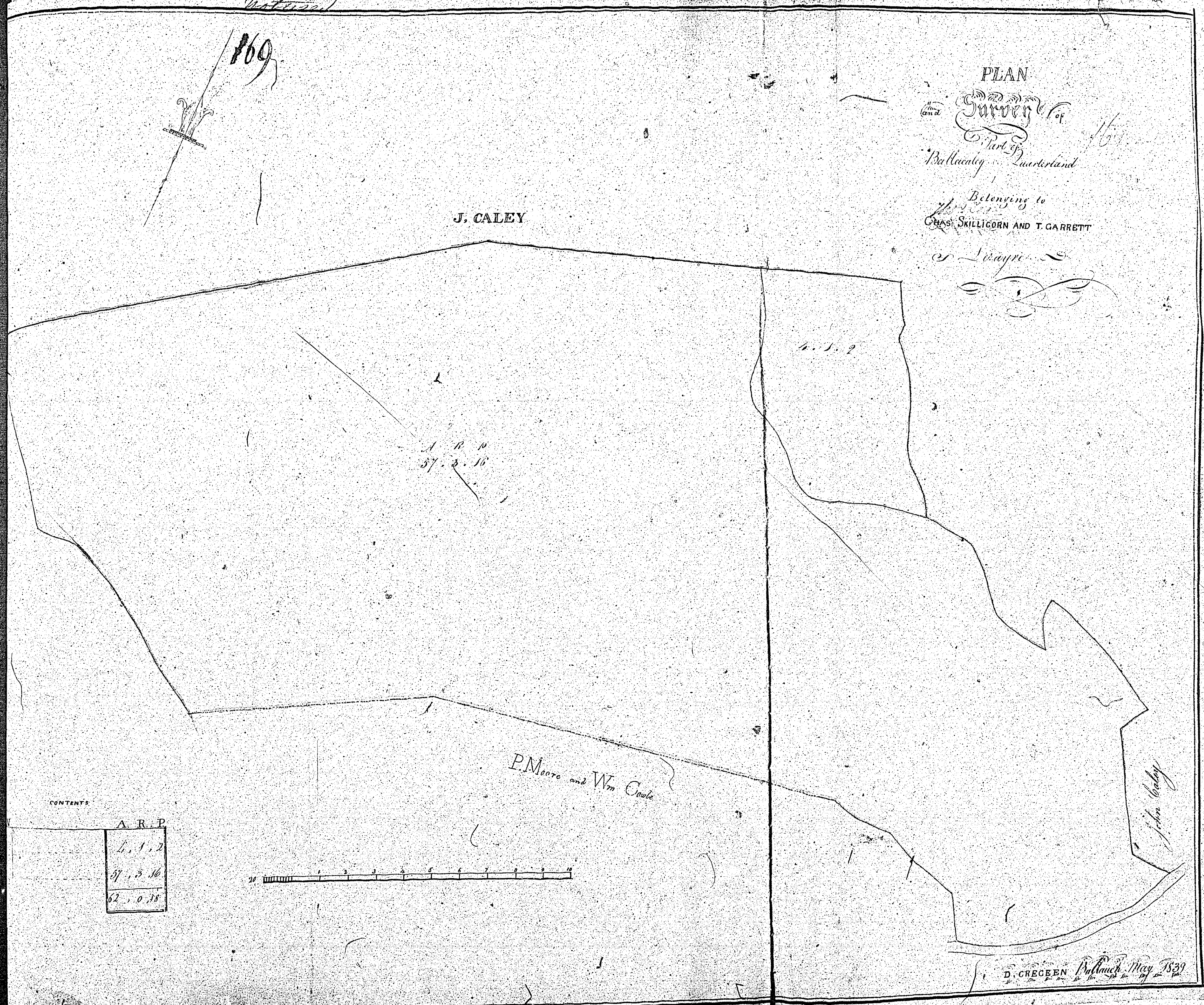
171

PLAN
and
Survey of

Part of
Ballinacly... Quarterland

Belonging to
Messrs SKILLICORN AND T. GARRETT

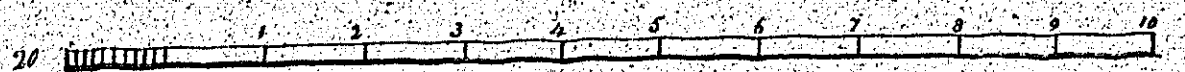
J. CALEY



CONTENTS

A R P

4. 1. 2
37. 3. 16
62. 0. 18



P. Moore and Wm. Coule

John Caley

D. CREGEEN Surveyor May 1839

171

CONTI

Handwritten notes in a column on the left side of the page, including the word "CONTI" and several lines of illegible text.

10	10	10	10
20	20	20	20
30	30	30	30
40	40	40	40
50	50	50	50
60	60	60	60
70	70	70	70
80	80	80	80
90	90	90	90
100	100	100	100

There is no plan
numbered 170