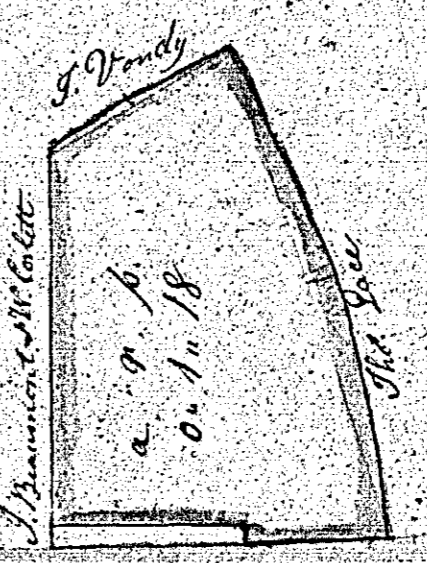
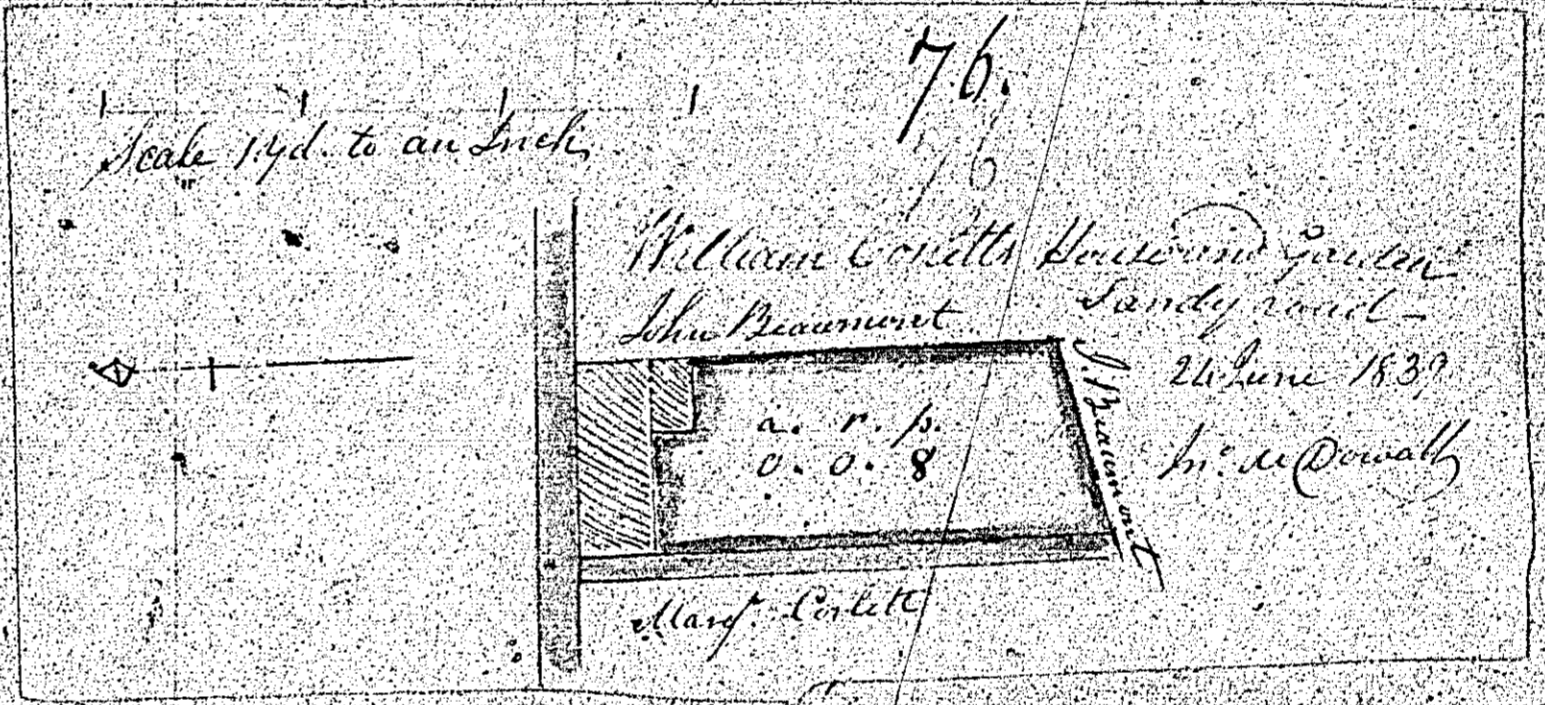
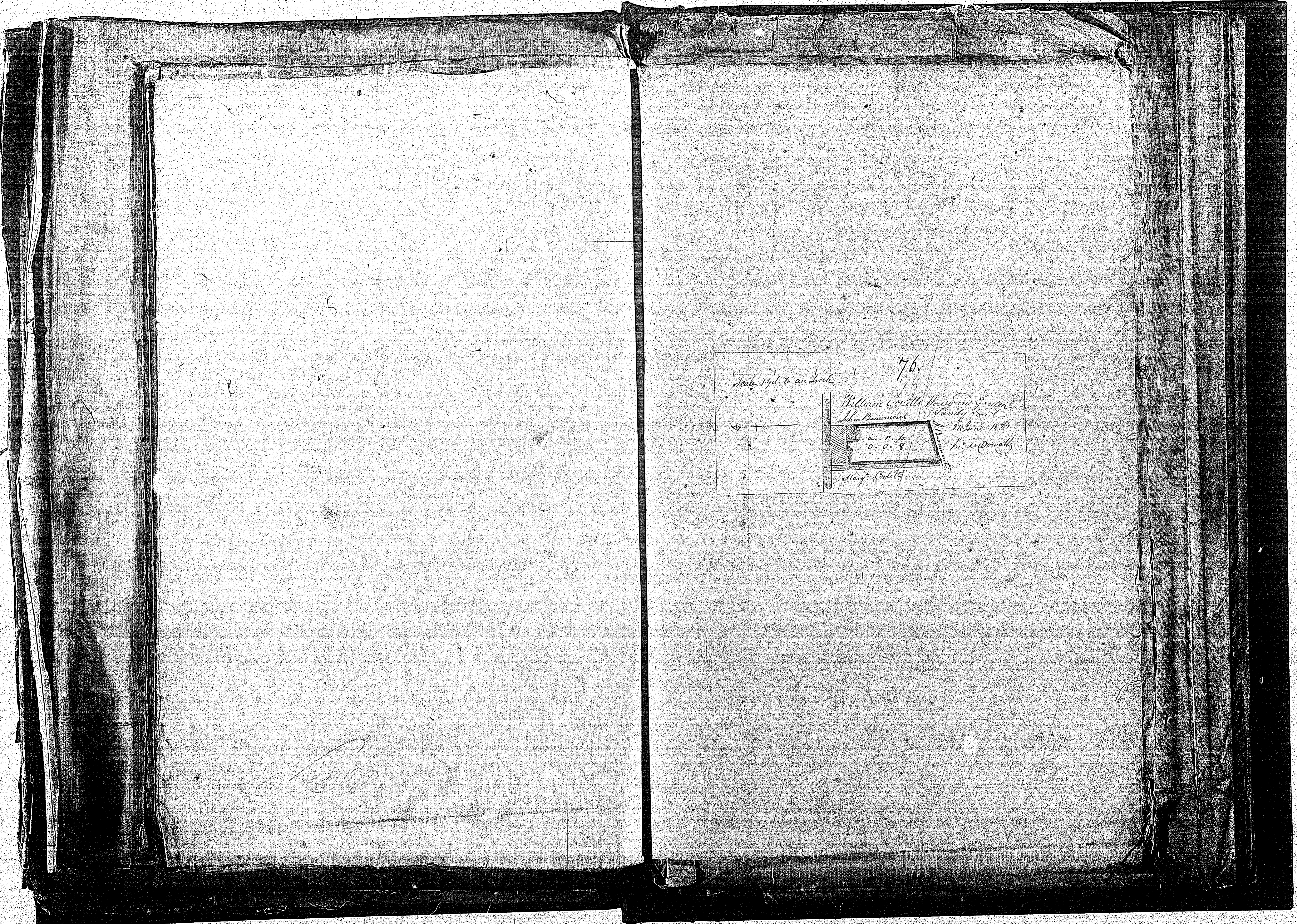


75

Part of Bellabrunk in the
Parish of Lejaysie belonging to
Marg^t Corlett.
Surveyed 24. June 1839
by John de Courall
Ramsay

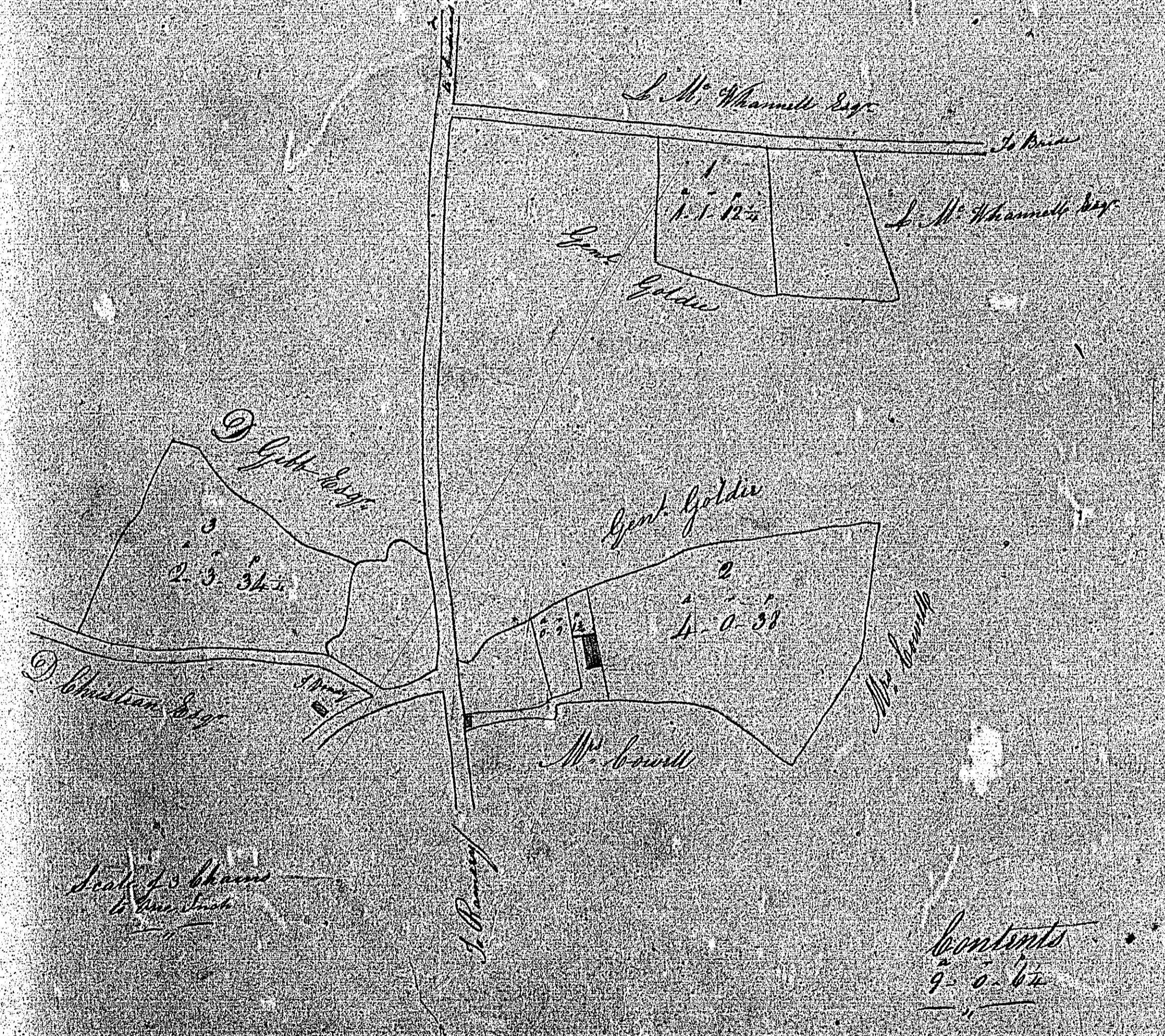
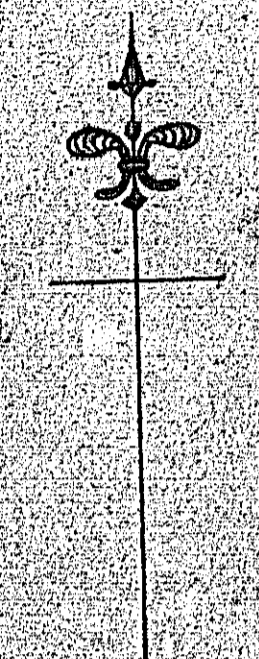


Scale of Chains



1852
77

Plan of parcels of Land
in the parish of Llangrove
the Property of
Mr John Cortell

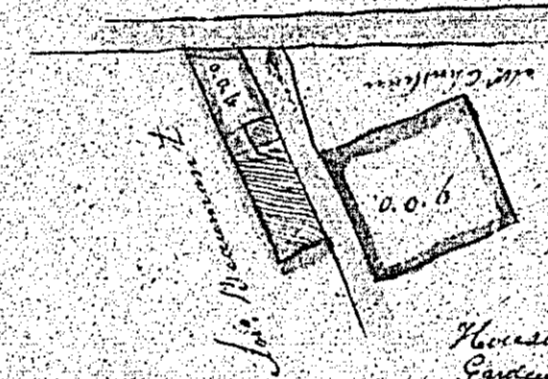


Contents
9 0 1/2

J. Howell Esq.
1852

Not used

78.

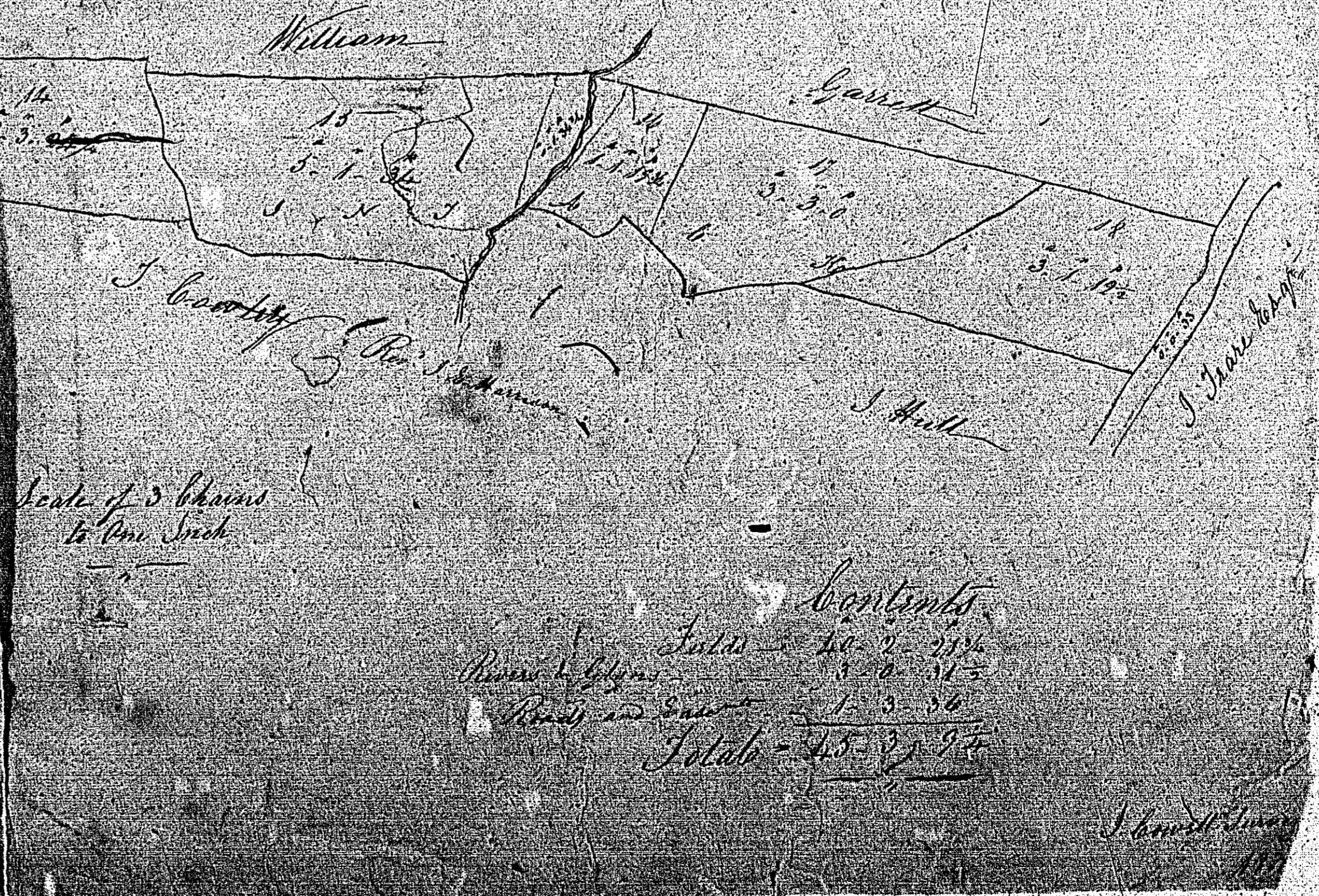
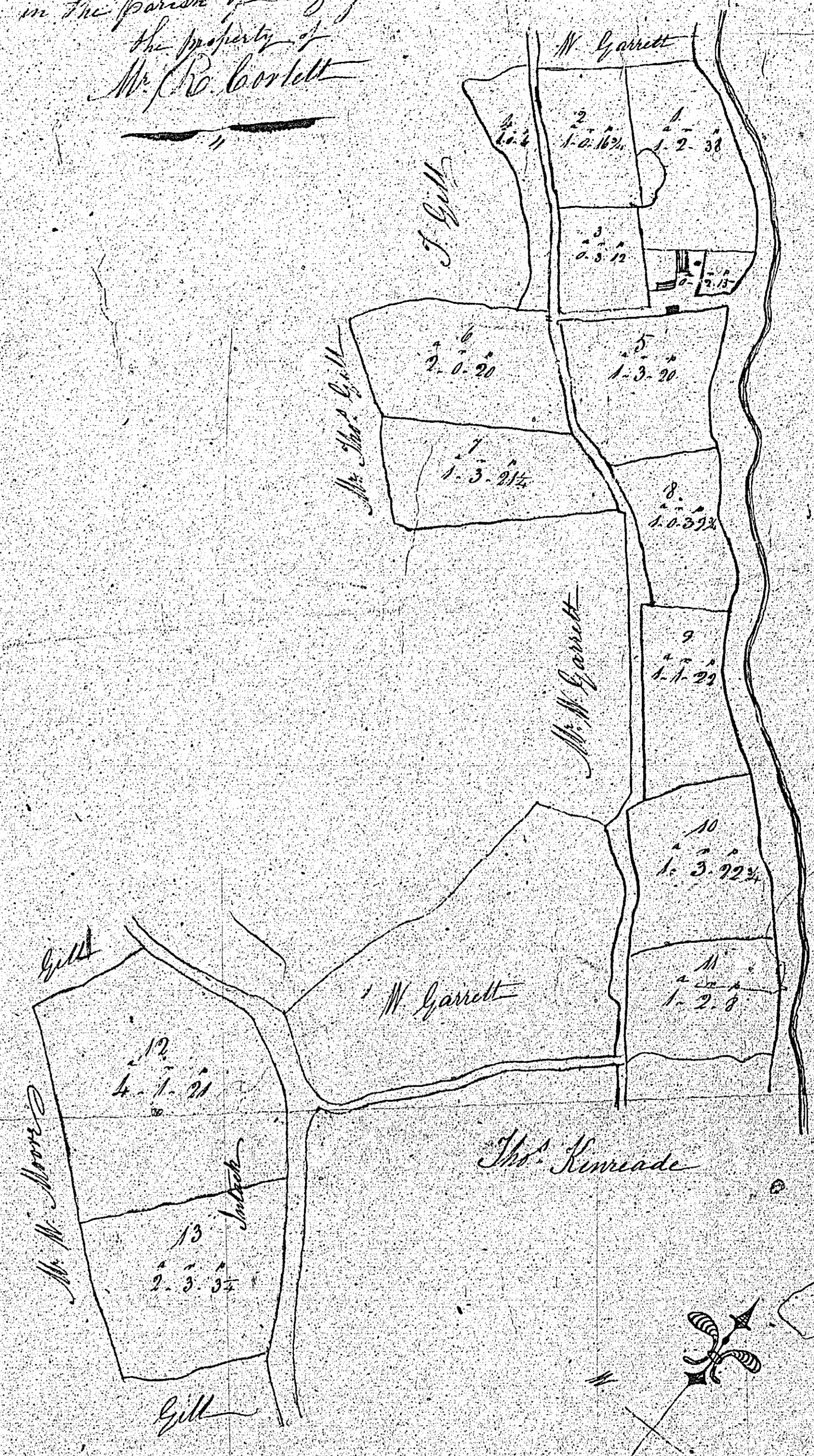


House and Garden on the
Sandy road belonging to
Marg^r. Corlett

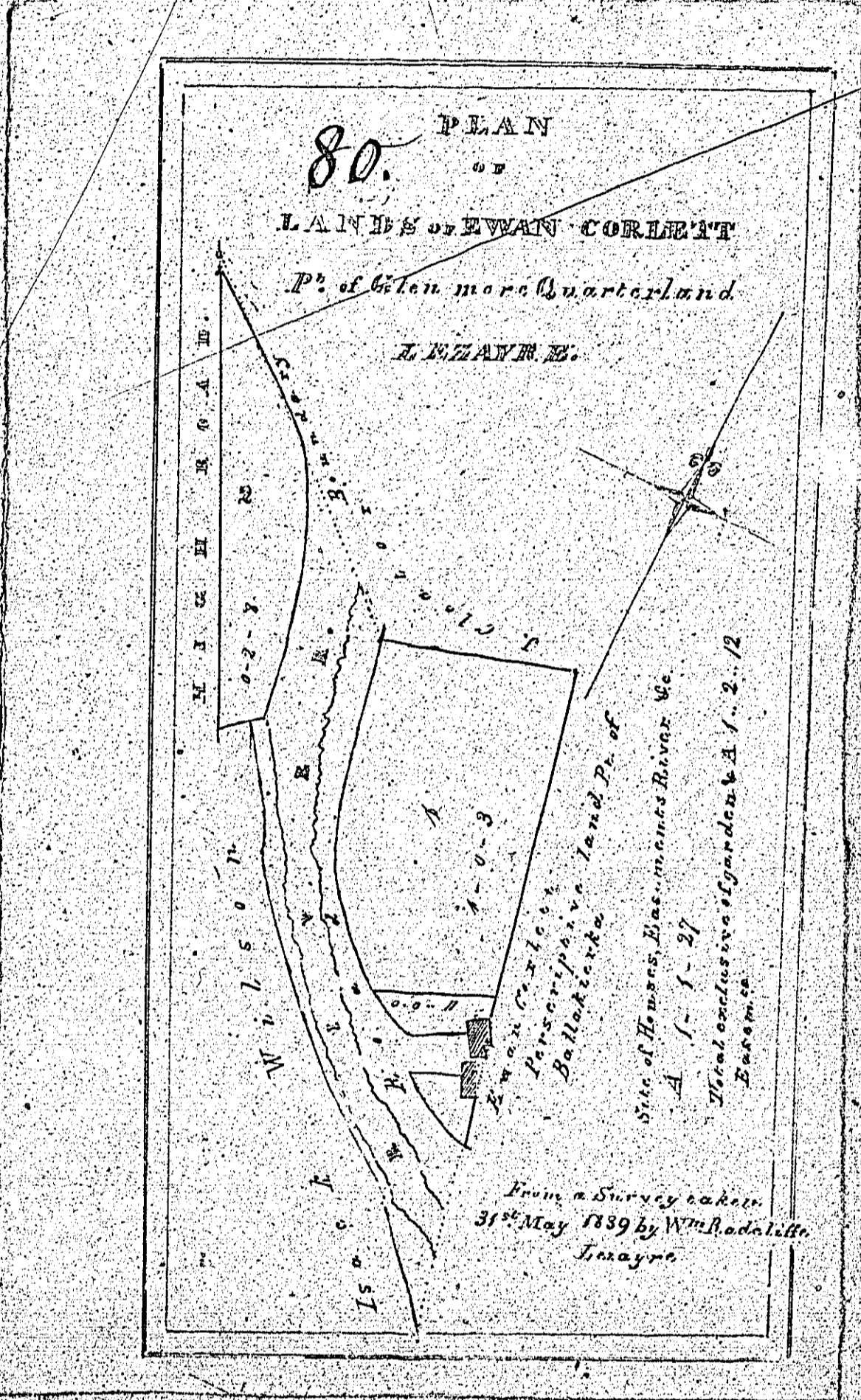
24th June 1839
J^r. M. Donnell

House &c	6.0.4
Garden	8.0.6
Total	14.0.10

Plan of a parts of the
Quarternland of
Narradale be
in the parish of Sezayre
the property of
Mr. R. Corlett



ISLE OF MAN GOVERNMENT: GENERAL REGISTRY
TITHE PLANS: PARISH OF LEZAYRE
Original monotone 1:30



80. PLAN
 of
 LANDS of EVAN CORLETT
 P^o of Glen more Quarterland
 A. K. K. A. N. E.

From a Survey taken
 31st May 1839 by W^m Radcliffe
 Surveyor

Site of House, Barn, manure Barrow &c.
 A. 1 - 1 - 27
 Total exclusive of garden &c. 1 - 2 - 2
 Acres