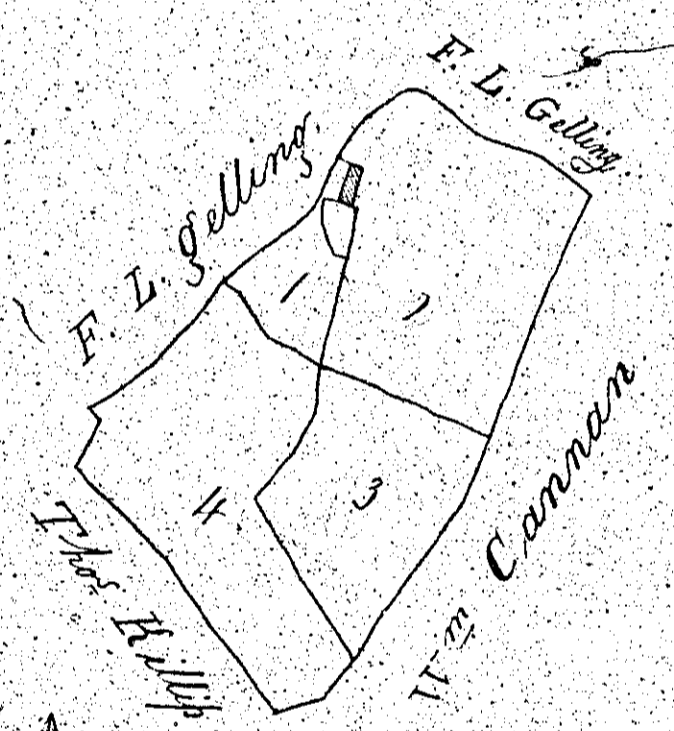


210

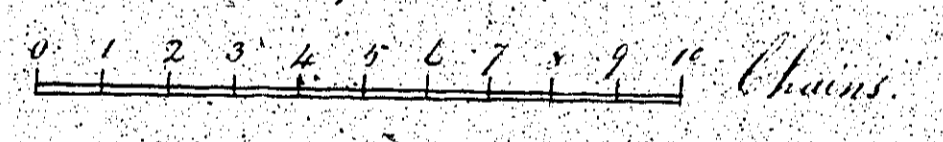
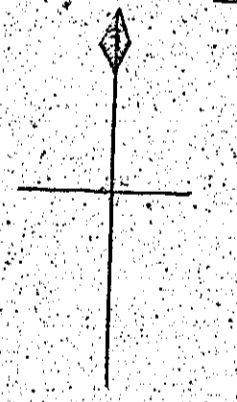
Plan

Of part of the Quarelands of Borvalley & Ballakaghan
In the parish of R.R. German the property of
Mrs Catherine Quay.



Reference.

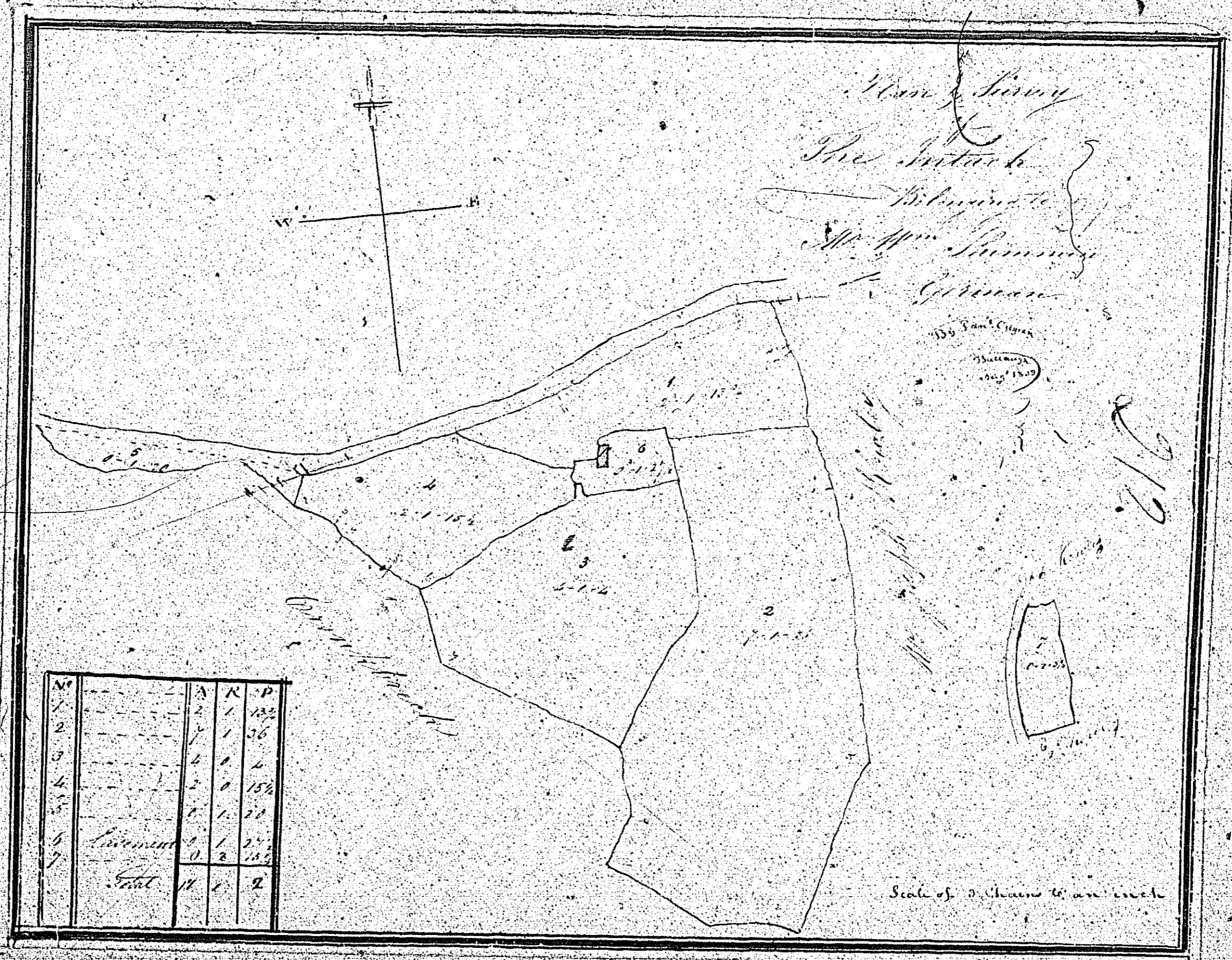
No.	A.	R.	P.
1	0	1	4
2	1	1	28
3	0	3	16
4	1	1	17
Total Content			3 3 30



Surveyed August 1840.
By William Riephun
W. R. German

for 211 see 1344135

There is no plan
numbered 211

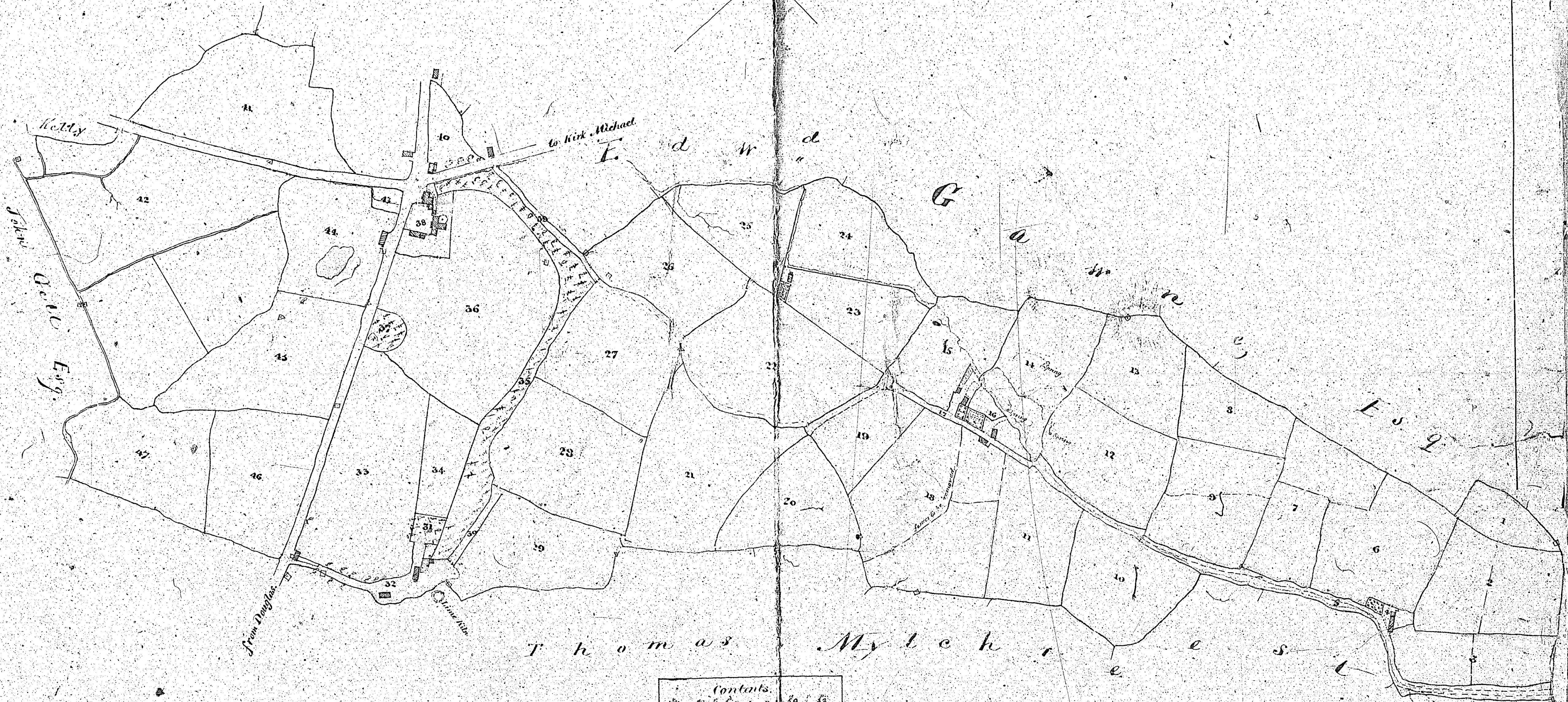


for 211 see 1344.135

Ballacrane

Property of W. Stephen Esq.
1840

213.



Thomas Mylchreest

Contents.

1	0.5.2	39	1.33
2	0.0.10	40	2.6.10
3	0.0.32	41	3.0.18
4	0.0.34	42	3.1.18
5	1.1.59	43	3.2.2
6	1.15.28	44	0.0.39
7	1.15.38	45	0.0.32
8	1.15.35	46	0.1.10
9	1.10.15	47	2.0.20
10	2.18.10	48	2.0.20
11	2.2.11	49	2.1.76
12	2.0.31	50	0.1.9
13	2.1.31	51	0.2.34
14	0.0.22	52	0.0.16
15	0.2.37	53	0.2.27
16	0.2.20	54	0.1.9
17	0.1.20	55	0.0.20
18	2.2.76	56	2.3.8
19	1.1.29	57	3.3.18
20	1.1.32	58	3.3.18
21	2.0.27	59	3.0.35
22	2.1.36	60	
23	1.1.36		
24	1.1.36		
59 1.33		74 2.36	

Report of Public Road - T. T. 26

Jepson and Kayll Surveyors

Scale of 3 Chains to an Inch

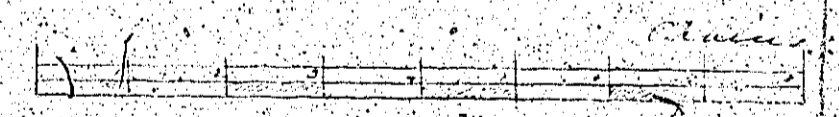
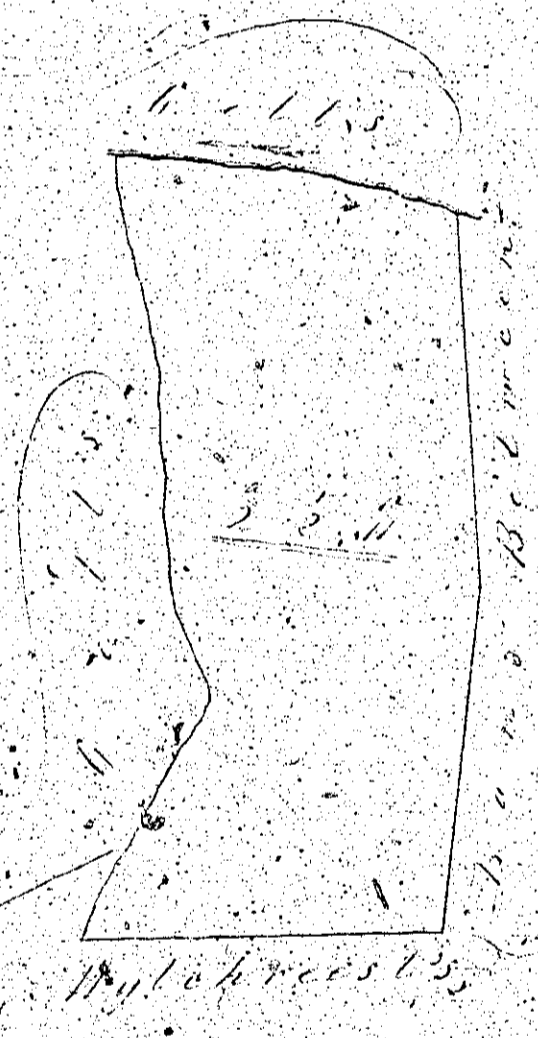
1300

The ...

1300

9/14

Plan of an Inland
called close. Diggel
Towish of Gorman
of the ...
of the ...



... ..

...

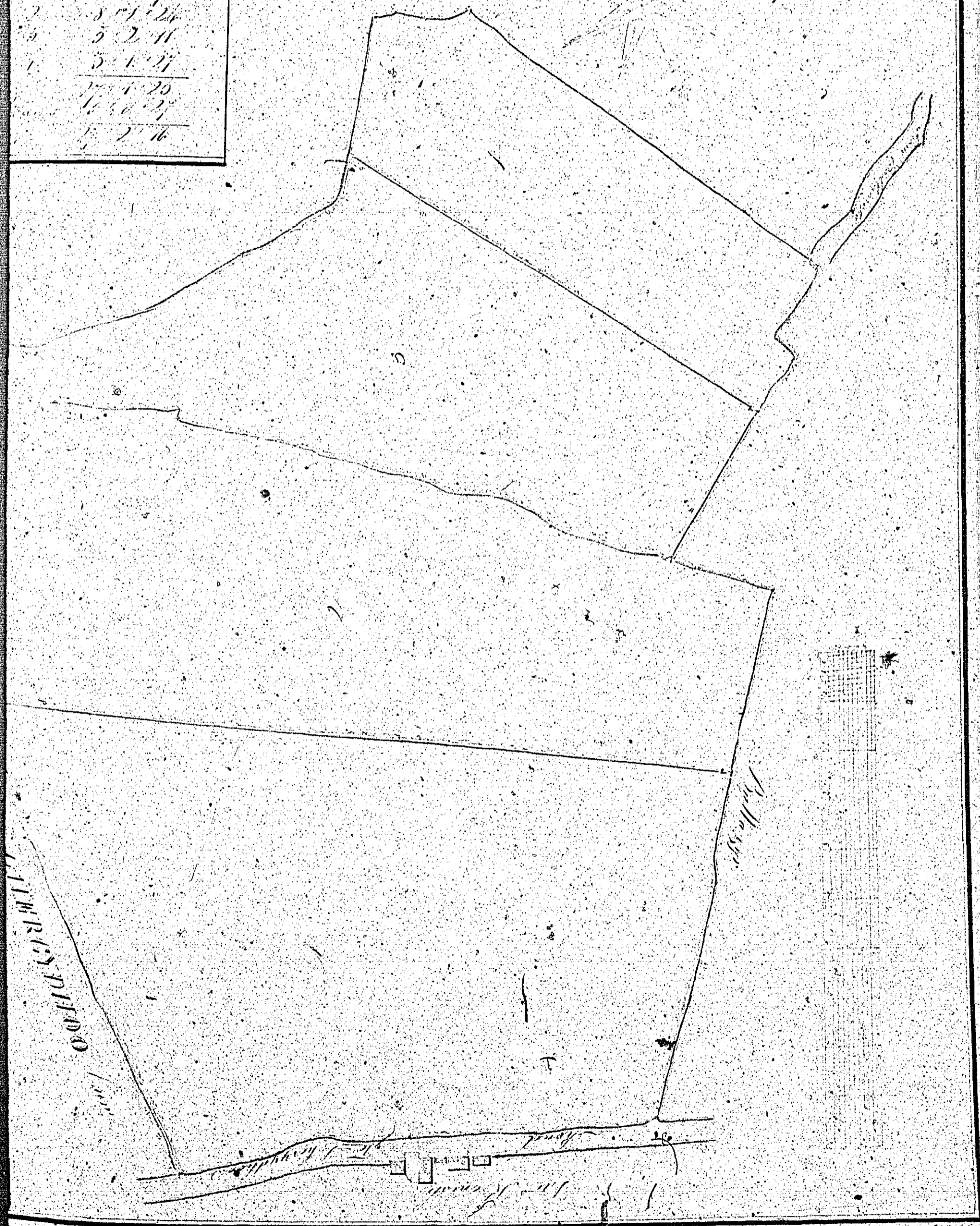
MAP of Ballajery Estates
in the Parish of St. 215

GERMAN.

The property of the late Sir...

Contents

1	16. 0. 0.
2	8. 0. 0.
3	5. 2. 11.
4	5. 1. 2.
5	4. 2. 0.
6	16. 0. 0.
7	5. 2. 11.



EXTRA
 POND
 CAMBRIDGE
 FOOT
 ROAD

13th

The Property of