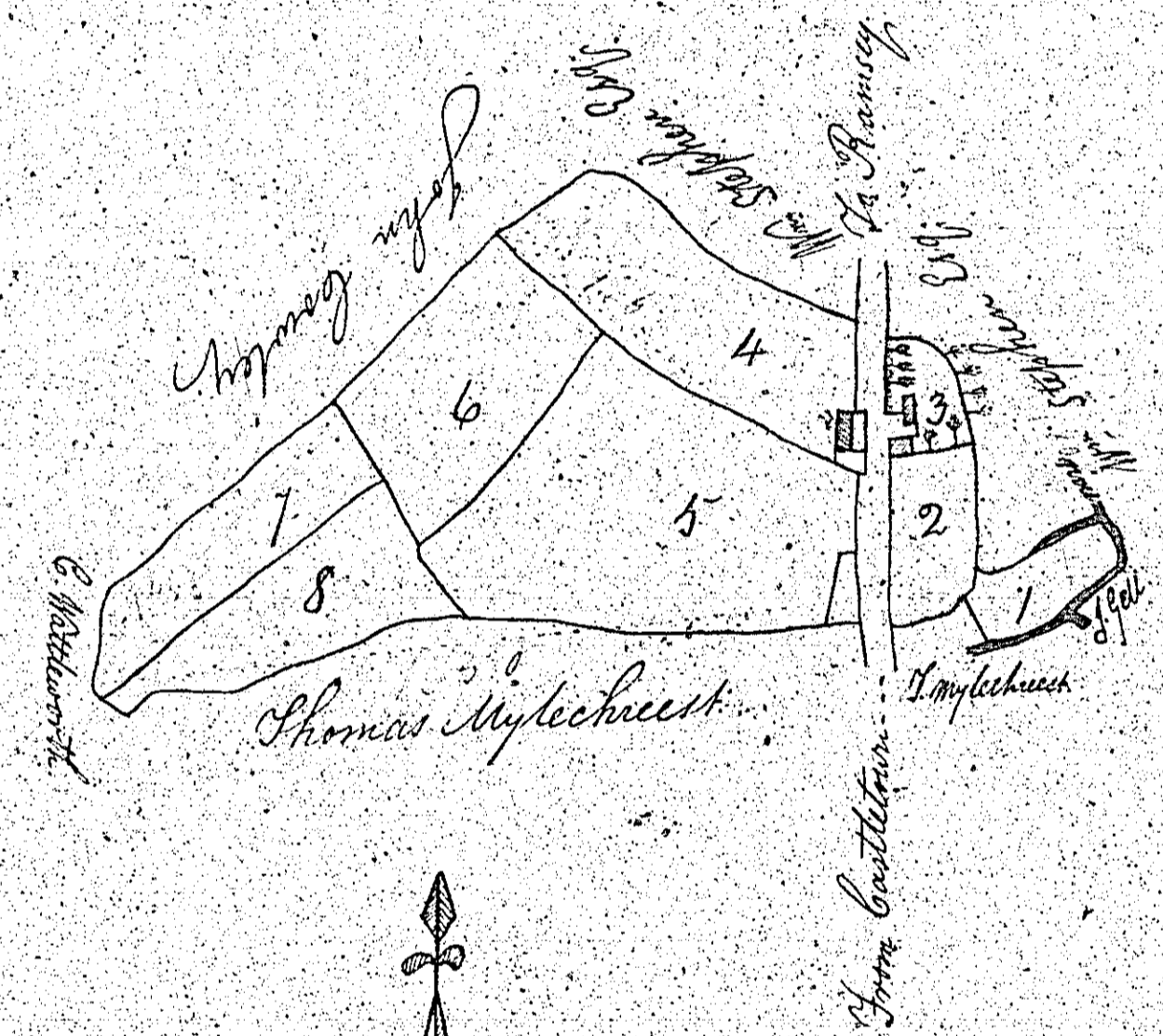


124.

PLAN

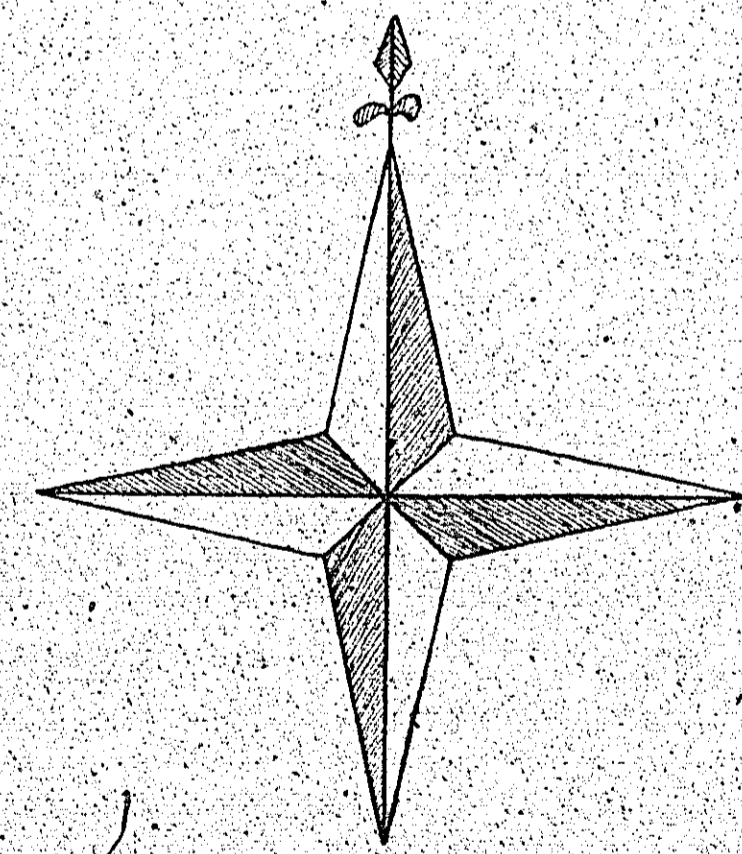
Of part of the Quarterland of Ballasfun.
In the parish of K.R. German.
The property of
M^r William Kelly.



Reference

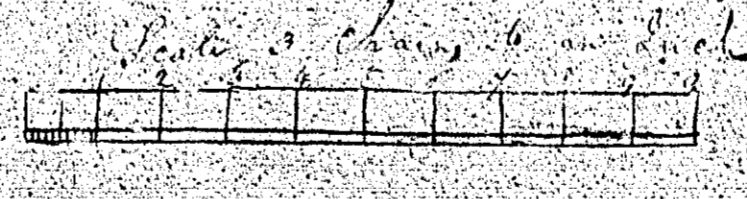
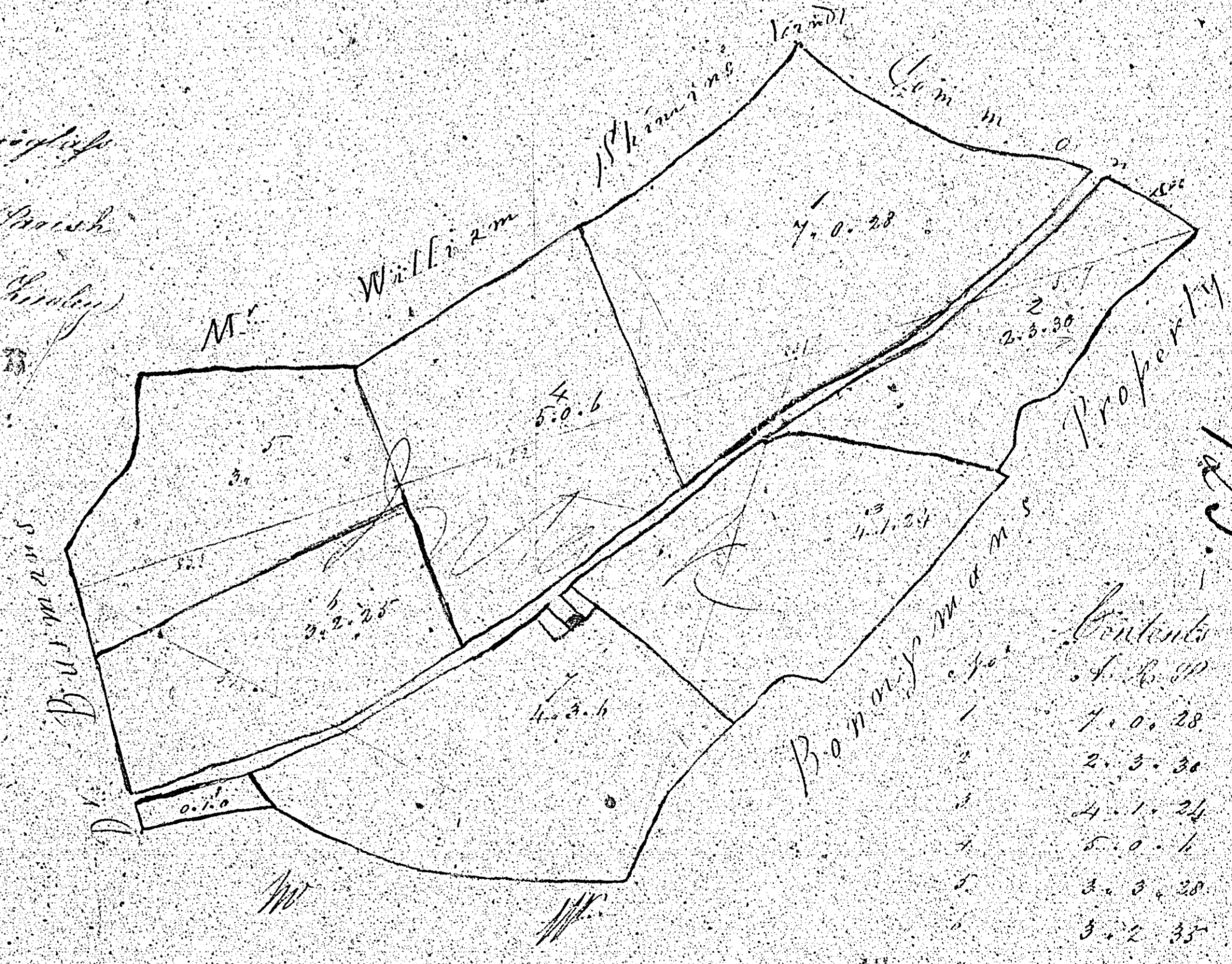
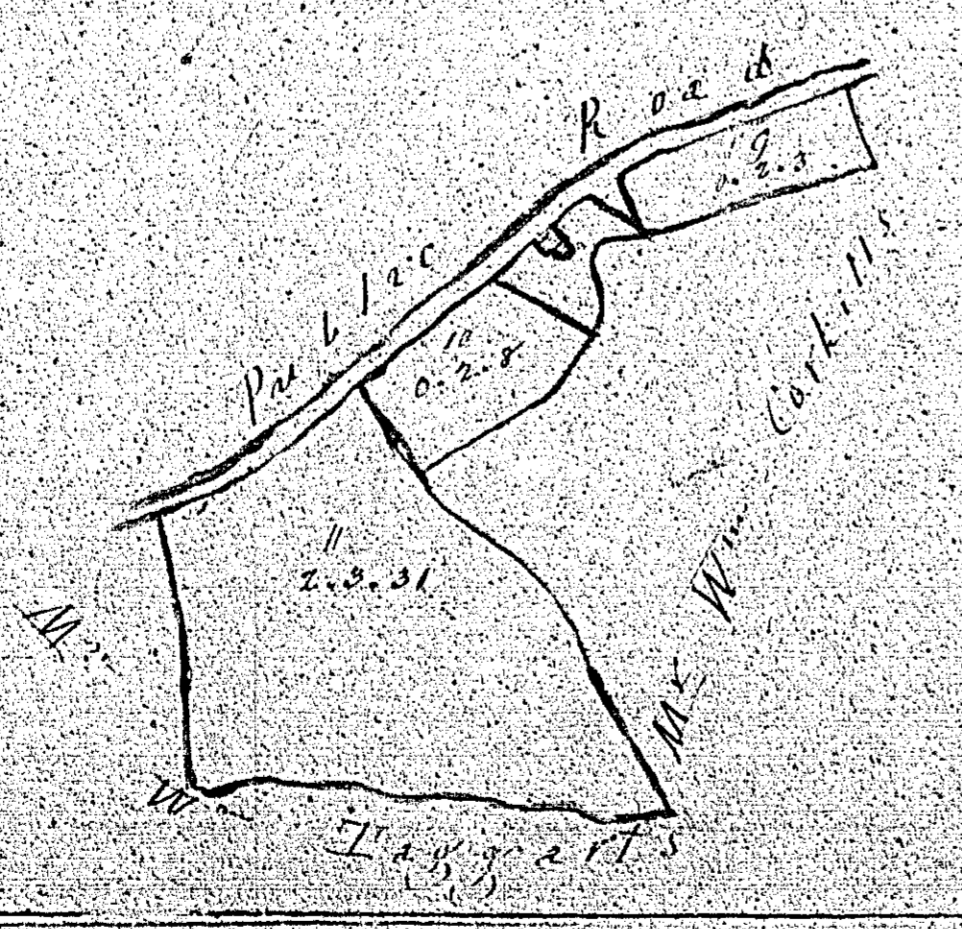
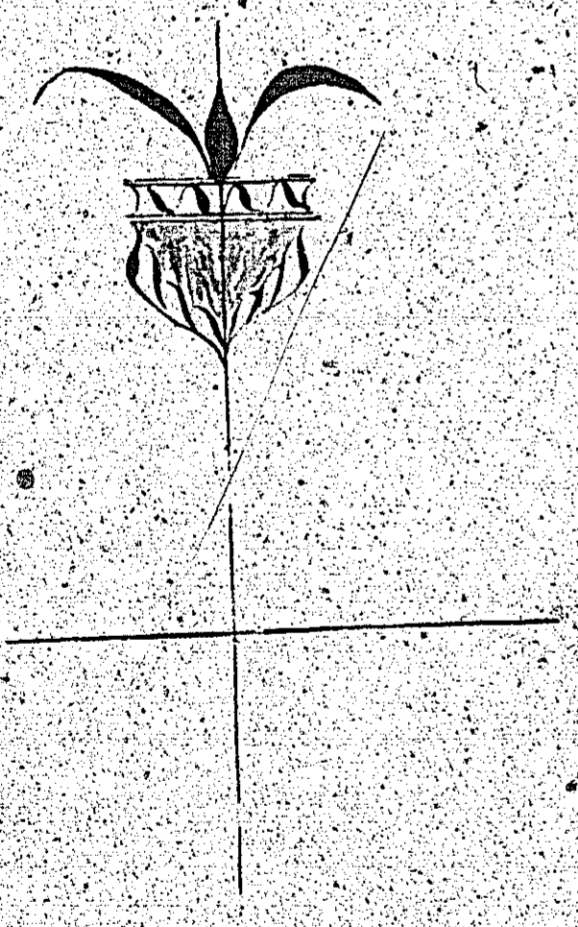
No.	a.	b.	p.
1	0	0	37
2	0	1	15
3	0	0	30
4	1	1	1
5	2	0	29
6	1	0	6
7	0	2	35
8	0	3	12
Total Content.			6 3 5

0 1 2 3 4 5 6 7 8 9 " chains.



Surveyed June 1840.
By William Kishin
K.R. German

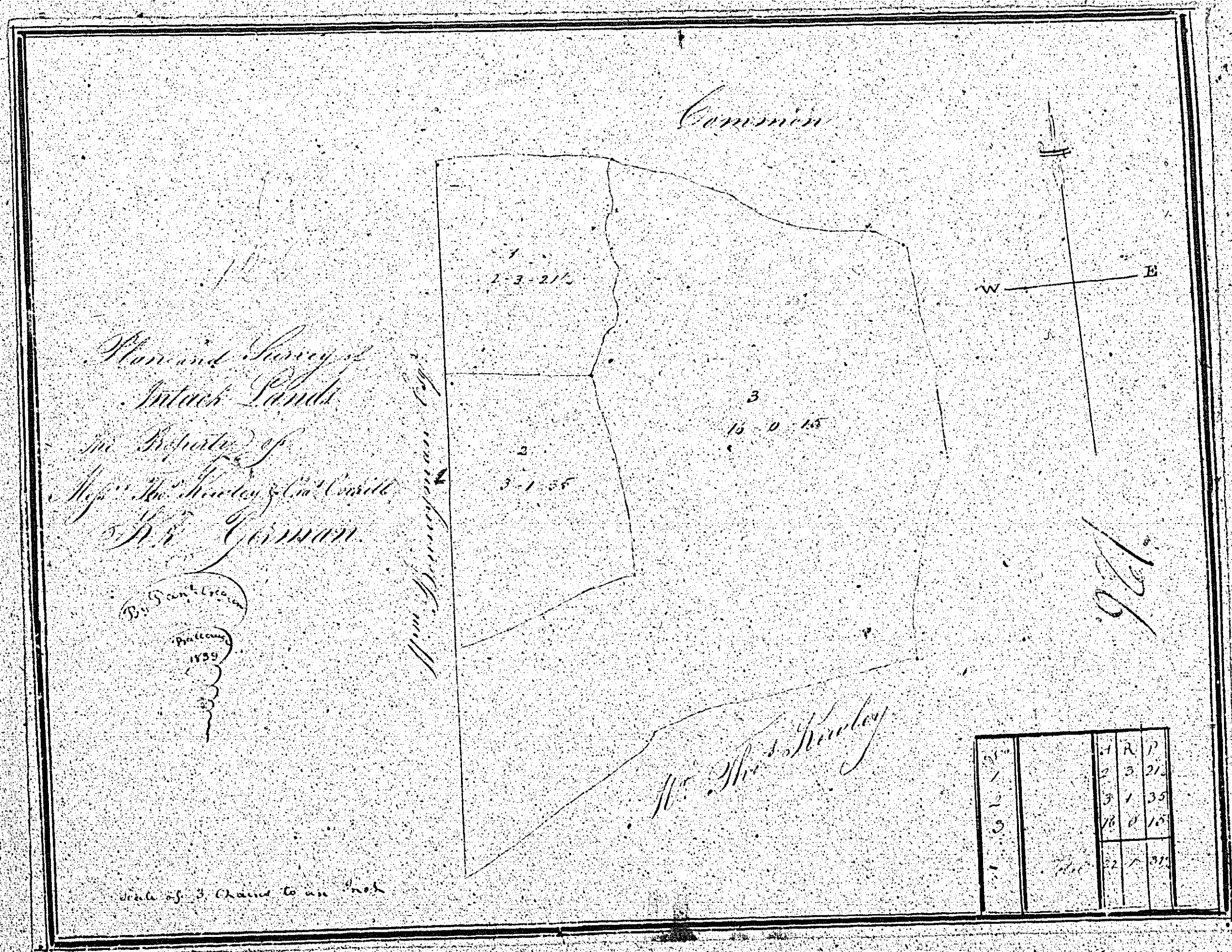
A Plan & Survey of Part of Harrington
 & a Piece of a Piece of Land in the Parish
 of ... the Rectory of ...
 by ... 1750



1750

Contents	
1	4.8.00
2	1.0.28
3	2.3.30
4	4.1.24
5	5.0.1
6	3.3.20
7	3.2.35
8	4.0.0
9	0.1.0
10	0.2.5
11	0.2.8
12	2.3.2
Sum of the above 28.0.14	
Other parts 1.1.13	
Total 29.0.27	

The Lands of ...



*Plan and Survey of
Said Lands
in the Parish of
St. Andrew & St. David
by
Wm. H. H. H. H. H.*

*By Order of the
Commissioners
1796*

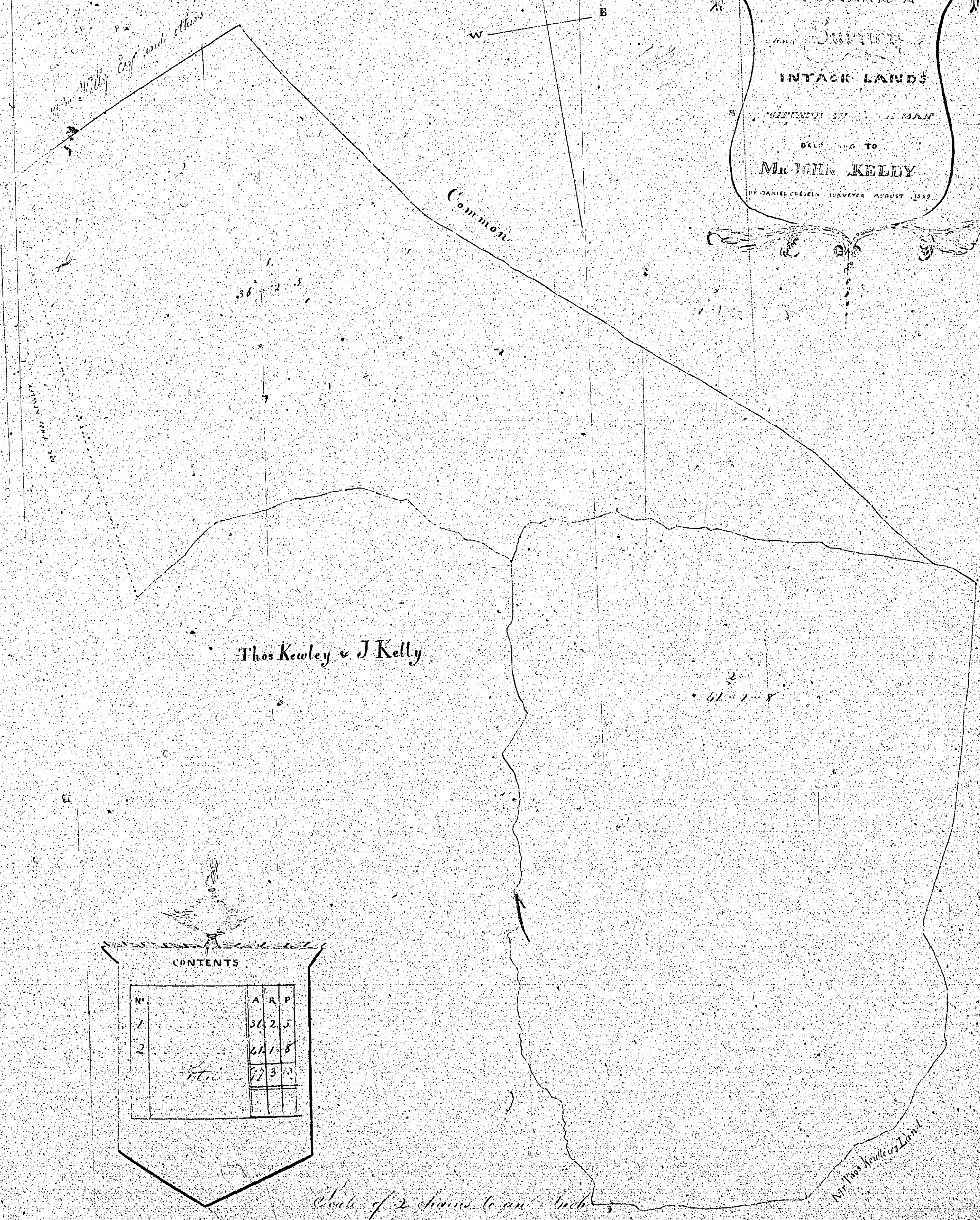
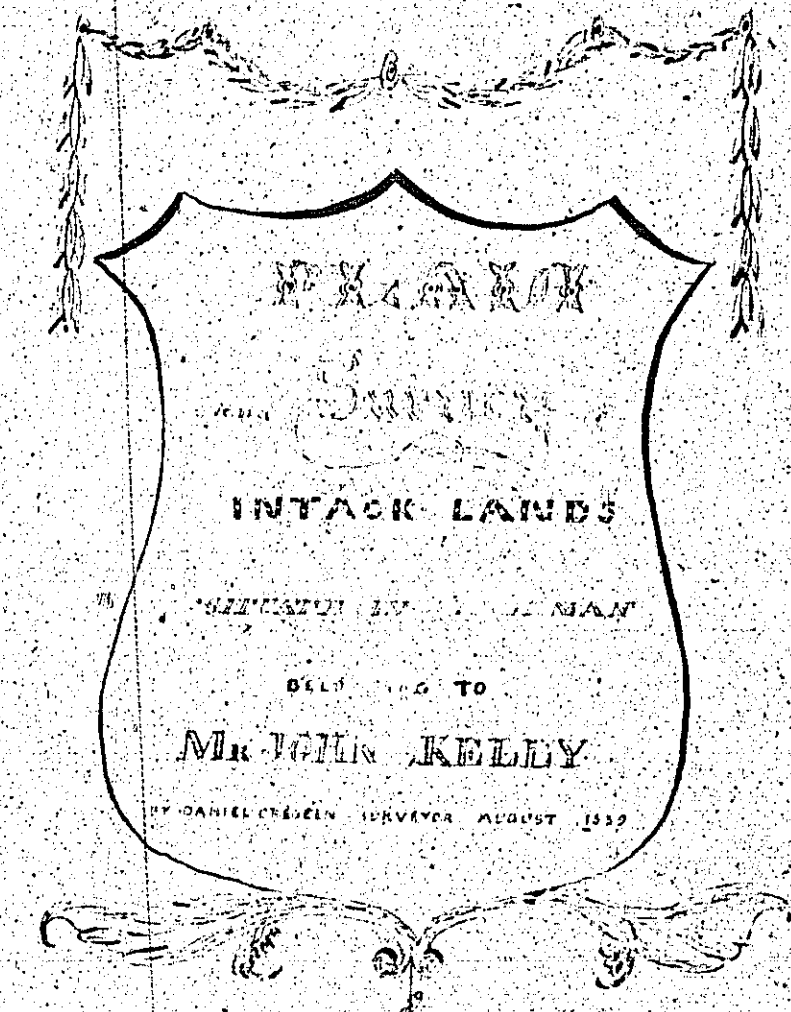
Scale of 3 Chains to an Inch

The Lands of Wm. H. H. H. H. H.

Wm. H. H. H. H. H.

1281

127



CONTENTS

No	A	R	P
1	56	2	5
2	62	1	8
	57	3	4

1284/297/30

William Kelly



MAP
and
Garden
of
COOILL SLEU QUARTERLAND AND INTACK
PARISH OF GERMAN TOWN PROPERTY OF
MR THOS KEWLEY

CONTENTS

No	A	R	P
1	2.6	7	221
2	2.6	11	221
3	1	3	2
4	2.6	1	3.2
5	3	1	4
6	7	1	5.3
7	3	1	27
8	6	1	104
9	2	2	292
10	6	3	11
11	0	3	2
12	3	0	634
13	3	0	292
14	2	32	
15	3	3	320
16	3	1	305
17	0	3	4
18	0	3	32
19	1	0	16
20	3	2	22
21	0	2	18
22	0	1	21
23	1	1	12
24	2	0	14
25	0	2	32
26	2	2	12
27	2	0	32
28	2	0	33
29	1	0	106
30	1	2	28
31	2	1	1
32	3	1	134
33	1	2	394
34	1	1	184
35	0	0	29
36	0	0	54
37	4	1	21
38	1	2	21
39	0	1	0
40	63	0	369

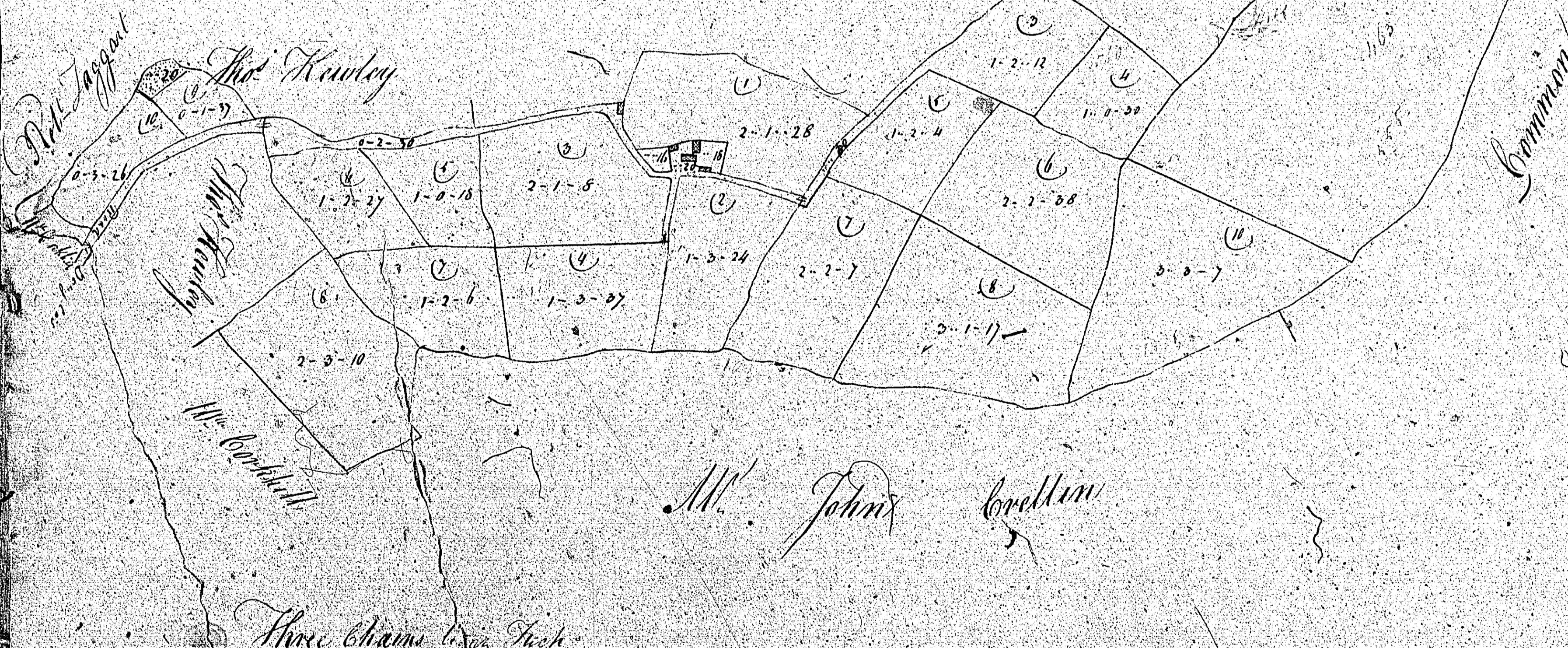


Scale of 3 Chains to an Inch

Main
 part of the
 Estate of Borey Lane
 in the
 Parish of German
 the property of
 Mr. James Kelly
 June 29th 1840

Wm Kelly Esq^r

Wm Kelly Esq^r



19/1

	Reference	A. R. P.
1.	2	1 28
2.	1	3 26
3.	2	1 8
4.	1	3 37
5.	1	0 6
6.	1	2 3
7.	1	3 48
8.	1	1 3
9.	2	2 26
10.	1	2 26
11.	1	2 26
12.	1	2 26
13.	1	2 26
14.	1	2 26
15.	1	2 26
16.	1	2 26
17.	1	2 26
18.	1	2 26
19.	1	2 26
20.	1	2 26
21.	1	2 26
22.	1	2 26
23.	1	2 26
24.	1	2 26
25.	1	2 26
26.	1	2 26
27.	1	2 26
28.	1	2 26
29.	1	2 26
30.	1	2 26
31.	1	2 26
32.	1	2 26
33.	1	2 26
34.	1	2 26
35.	1	2 26
36.	1	2 26
37.	1	2 26
38.	1	2 26
39.	1	2 26
40.	1	2 26
41.	1	2 26
42.	1	2 26
43.	1	2 26
44.	1	2 26
45.	1	2 26
46.	1	2 26
47.	1	2 26
48.	1	2 26
49.	1	2 26
50.	1	2 26
Total	50	1 4

Mr. Kelly Esq^r

Mr. Bordwell

Mr. John Conliffe

Three Chains Iron Fench

Common

Mr. Kelly Esq^r

Mr. Kelly Esq^r

Joseph Blake Survey