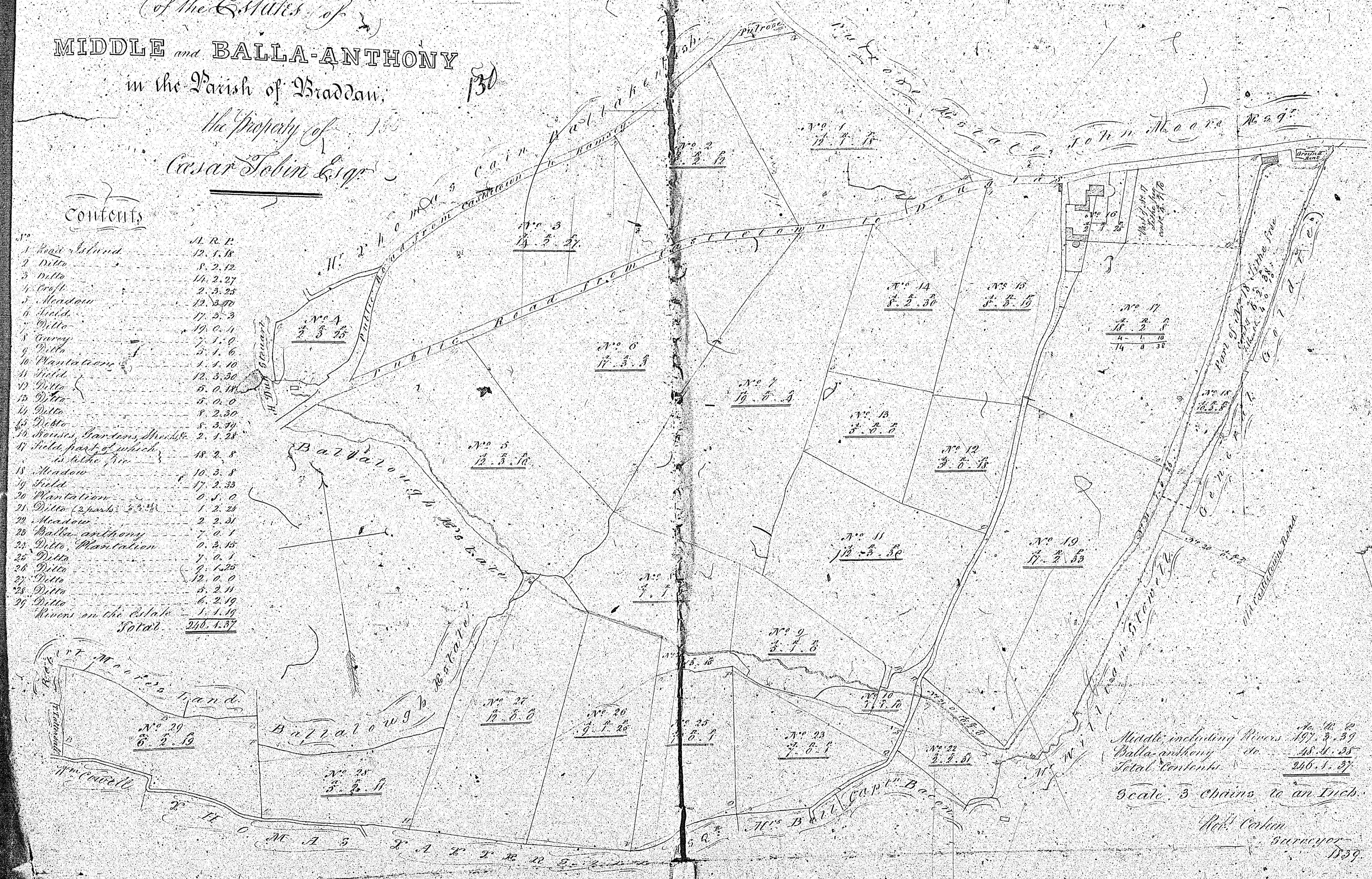


Plan and Survey *1830*
(of the Estates of)
MIDDLE and BALLA-ANTHONY
 in the Parish of Braddan,
the Property of
Caspar Tobin Esq.

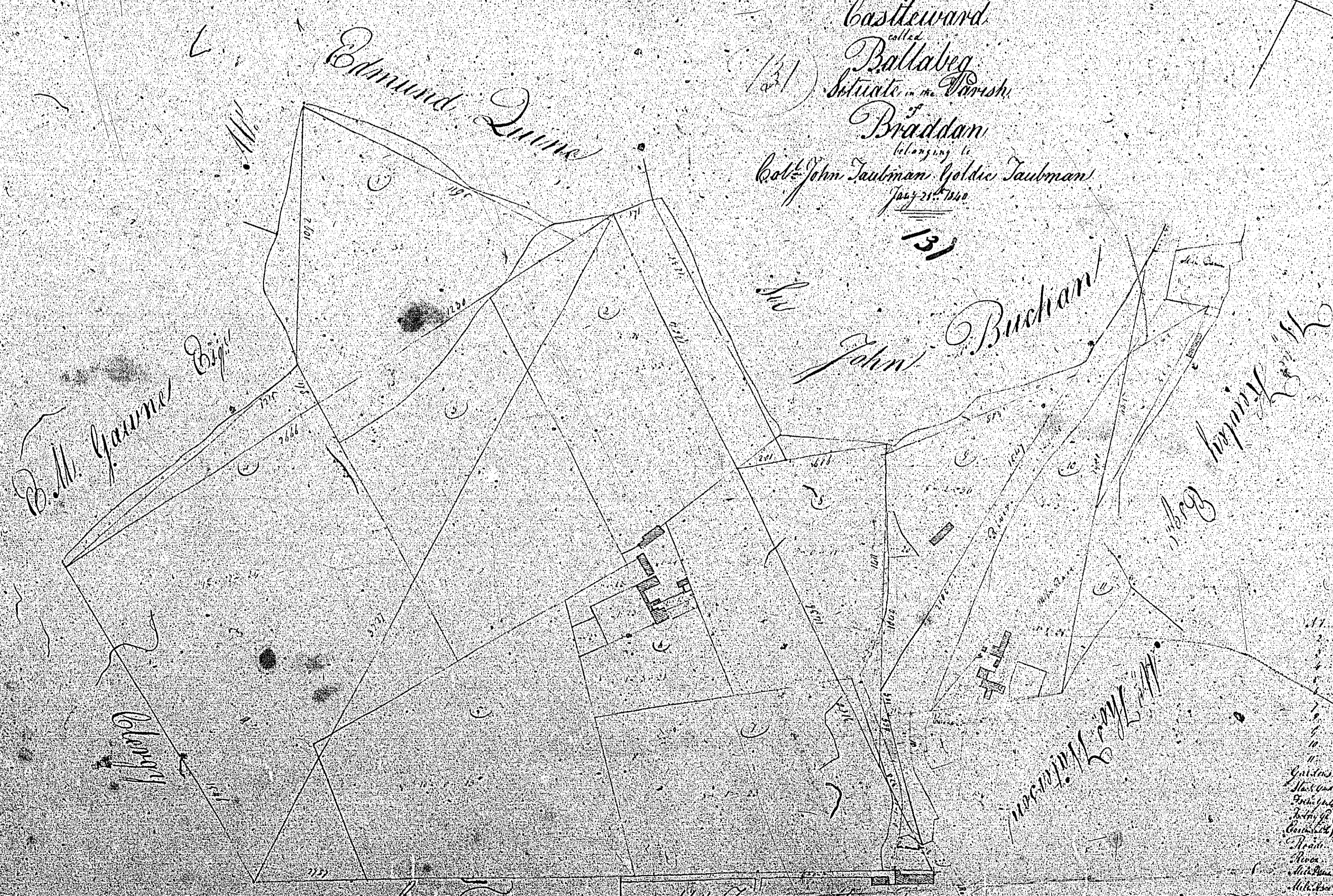
Contents

No.	Description	A. R. P.
1	Rock Island	12. 1. 18
2	Doitto	8. 2. 12
3	Doitto	14. 2. 27
4	Croft	2. 3. 25
5	Meadow	12. 3. 00
6	Field	17. 3. 3
7	Doitto	19. 0. 1
8	Garage	7. 1. 0
9	Doitto	3. 1. 6
10	Plantation	1. 1. 10
11	Field	12. 3. 30
12	Doitto	5. 0. 10
13	Doitto	5. 0. 0
14	Doitto	5. 2. 30
15	Doitto	5. 3. 30
16	Houses, Gardens, Orchards, &c. in Balla-anthony	2. 1. 28
17	Field part of which is Balla-anthony	18. 2. 8
18	Meadow	10. 3. 8
19	Field	17. 2. 33
20	Plantation	0. 5. 0
21	Doitto (2 parcels)	1. 2. 25
22	Meadow	2. 2. 31
23	Balla-anthony	7. 0. 1
24	Doitto, Plantation	0. 3. 15
25	Doitto	7. 0. 1
26	Doitto	9. 1. 25
27	Doitto	12. 0. 0
28	Doitto	5. 2. 11
29	Doitto	6. 2. 19
30	Rivers on the Estate	1. 1. 19
Total		246. 4. 37



Middle including Rivers 197. 3. 59
 Balla-anthony do 48. 4. 38
Total Contents 246. 4. 37
 Scale 3 chains to an Inch.
 Wm. Conlon Surveyor 1830

131
 Slan
 A portion of the Town
 Castleward
 called
 Ballabeg
 Situate in the Parish
 of
 Braddan
 Surveyed by
 Col^l John Taubman Golden Taubman
 July 21st 1752
 131



Edmund Quinn
 B. M. Gannon Esq^r
 O'Connell
 Sand

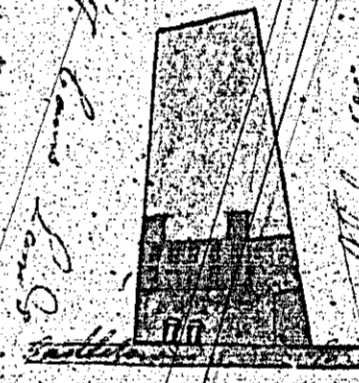
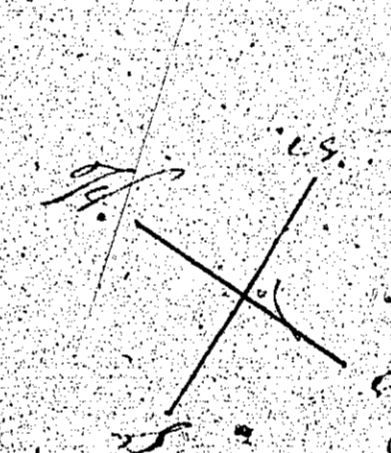
John Buchanan
 James Murray
 Mr James Moore
 Scale of Chains

11	20
12	20
13	20
14	20
15	20
16	20
17	20
18	20
19	20
20	20
21	20
22	20
23	20
24	20
25	20
26	20
27	20
28	20
29	20
30	20
31	20
32	20
33	20
34	20
35	20
36	20
37	20
38	20
39	20
40	20
41	20
42	20
43	20
44	20
45	20
46	20
47	20
48	20
49	20
50	20
51	20
52	20
53	20
54	20
55	20
56	20
57	20
58	20
59	20
60	20
61	20
62	20
63	20
64	20
65	20
66	20
67	20
68	20
69	20
70	20
71	20
72	20
73	20
74	20
75	20
76	20
77	20
78	20
79	20
80	20
81	20
82	20
83	20
84	20
85	20
86	20
87	20
88	20
89	20
90	20
91	20
92	20
93	20
94	20
95	20
96	20
97	20
98	20
99	20
100	20

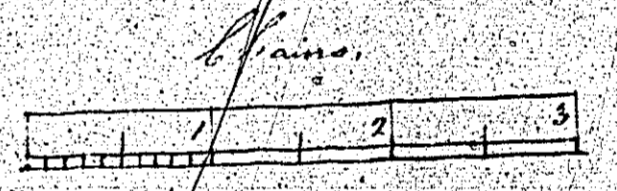
Joseph Black

PLAN
of the
PAROCHIAL SCHOOL HOUSE
and
GARDEN
of the Parish of Braddan.

133

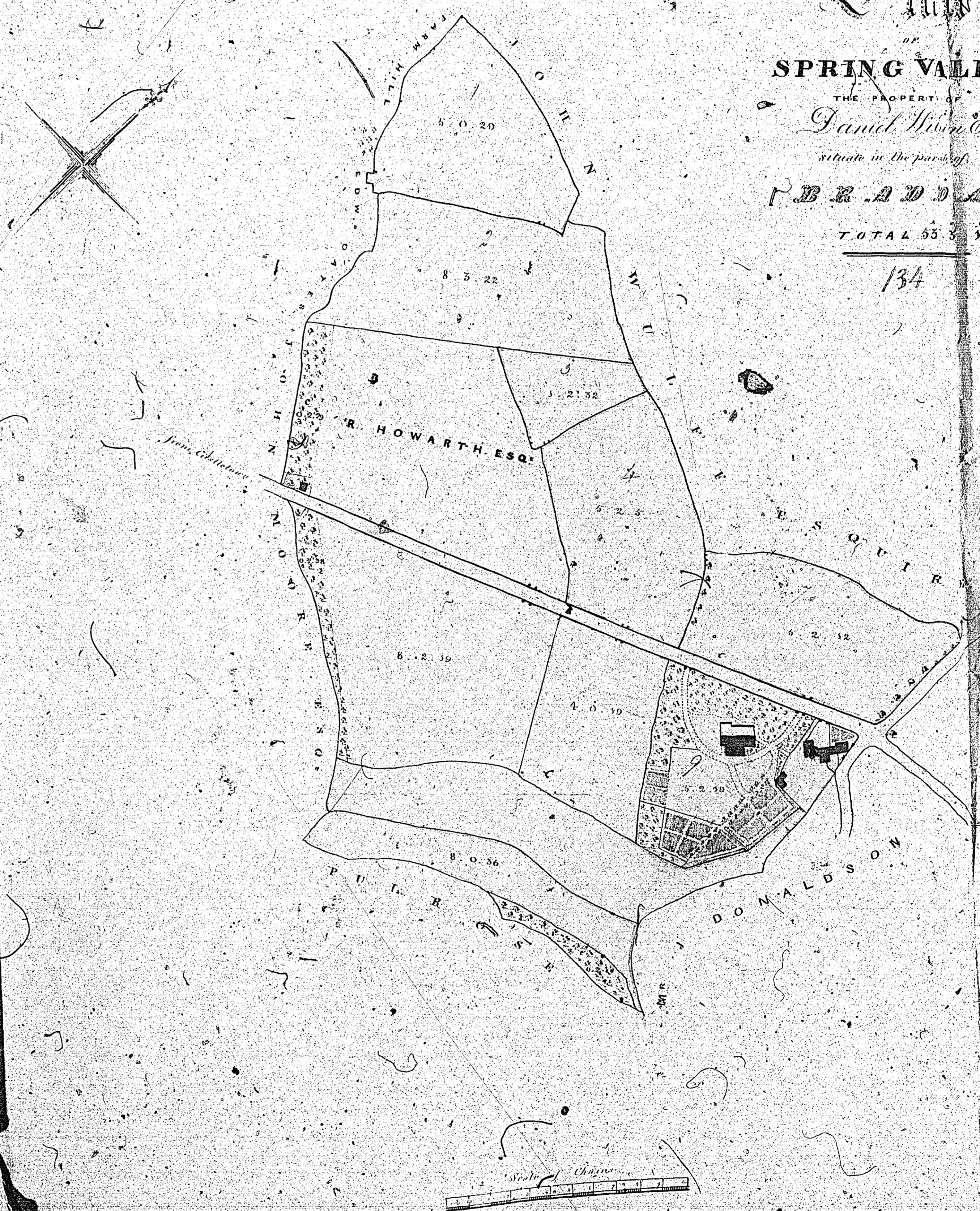


Area of R. P.
Area 0. 18



John Green Esq. Braddan 1840.

or
SPRING VALLEY
 THE PROPERTY OF
David Howarth Esq.
 situated in the parish of
BRADDAW
 TOTAL 55 3 35
 134



Handwritten notes:
 The land was
 given to
 the King's...