

100  
*Injack Lands*  
 The Property of  
**EDWARD FORBES ESQR**  
 Situate in the Parish of Ballinacorney  
 BY DANIEL CROFTEN MARCH 1840  
 Scale of 1 chain to an Inch

108

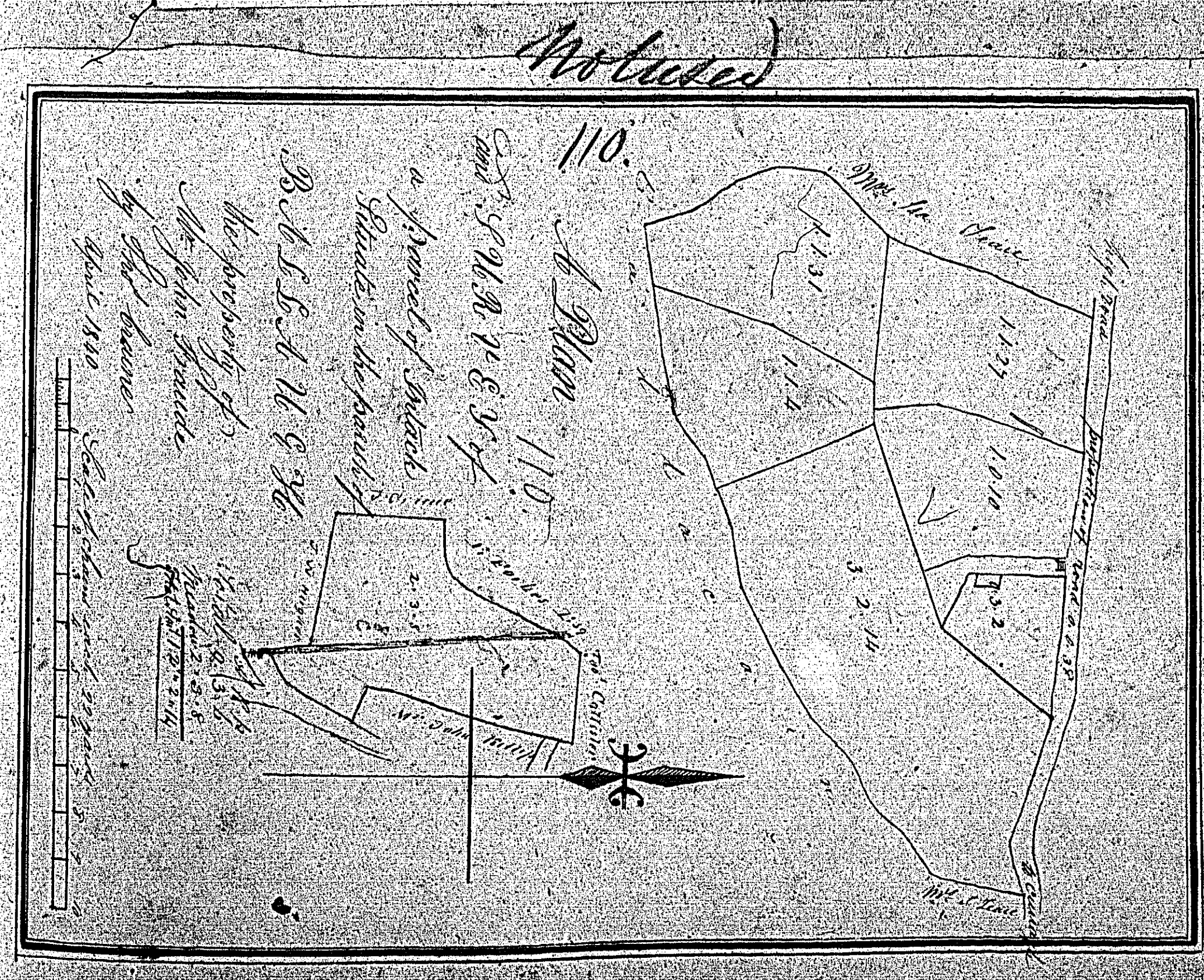
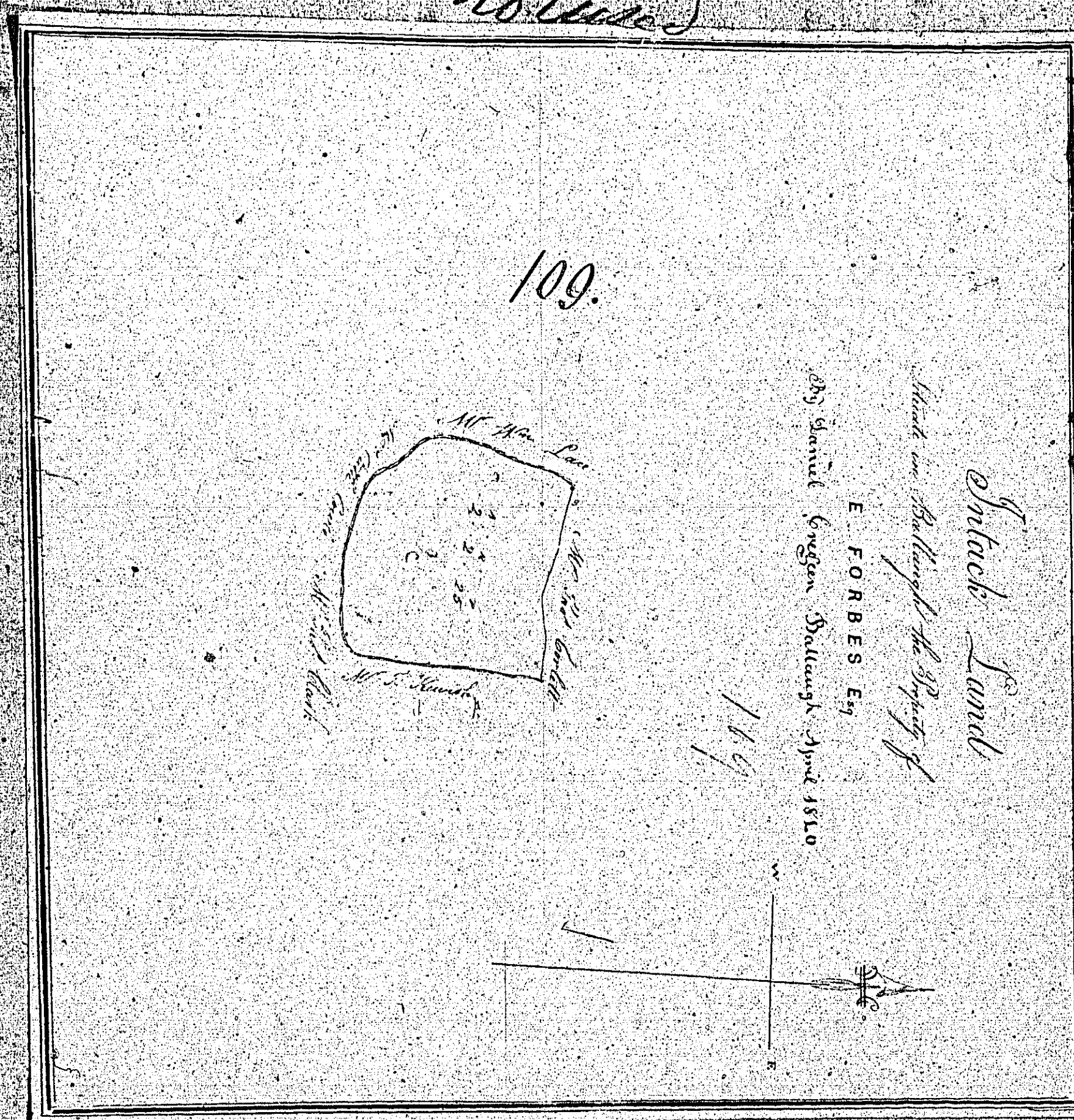
Contents

No.	Page	Page	Page
1	1	2	3
2	4	5	6
3	7	8	9
4	10	11	12
5	13	14	15
6	16	17	18
7	19	20	21
8	22	23	24
9	25	26	27
10	28	29	30
11	31	32	33
12	34	35	36
13	37	38	39
14	40	41	42
15	43	44	45
16	46	47	48
17	49	50	51
18	52	53	54
19	55	56	57
20	58	59	60
21	61	62	63
22	64	65	66
23	67	68	69
24	70	71	72
25	73	74	75
26	76	77	78
27	79	80	81
28	82	83	84
29	85	86	87
30	88	89	90
31	91	92	93
32	94	95	96
33	97	98	99
34	100	101	102
35	103	104	105
36	106	107	108
37	109	110	111
38	112	113	114
39	115	116	117
40	118	119	120
41	121	122	123
42	124	125	126
43	127	128	129
44	130	131	132
45	133	134	135
46	136	137	138
47	139	140	141
48	142	143	144
49	145	146	147
50	148	149	150
51	151	152	153
52	154	155	156
53	157	158	159
54	160	161	162
55	163	164	165
56	166	167	168
57	169	170	171
58	172	173	174
59	175	176	177
60	178	179	180
61	181	182	183
62	184	185	186
63	187	188	189
64	190	191	192
65	193	194	195
66	196	197	198
67	199	200	201
68	202	203	204
69	205	206	207
70	208	209	210
71	211	212	213
72	214	215	216
73	217	218	219
74	220	221	222
75	223	224	225
76	226	227	228
77	229	230	231
78	232	233	234
79	235	236	237
80	238	239	240
81	241	242	243
82	244	245	246
83	247	248	249
84	250	251	252
85	253	254	255
86	256	257	258
87	259	260	261
88	262	263	264
89	265	266	267
90	268	269	270
91	271	272	273
92	274	275	276
93	277	278	279
94	280	281	282
95	283	284	285
96	286	287	288
97	289	290	291
98	292	293	294
99	295	296	297
100	298	299	300

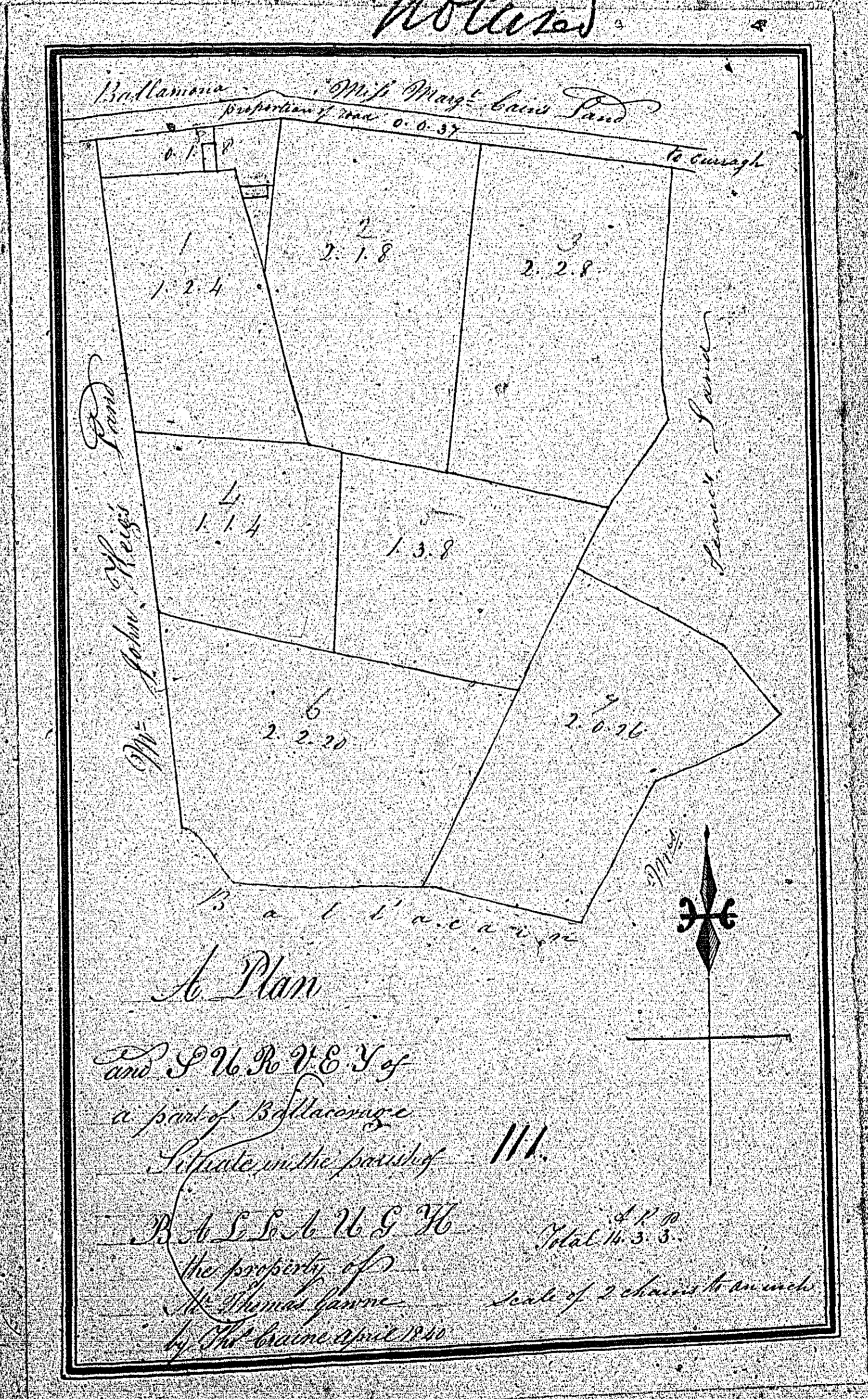
ISLE OF MAN GOVERNMENT: GENERAL REGISTRY  
TITHE PLANS: PARISH OF BALLAUGH

Originals monotone

1:30



*Noted*





Not used

A Plan and Survey of a part of  
the Chantry and acre or more in  
the parish of Hallowell the property  
of William Gann taken April 25<sup>th</sup> 1840  
by Abner Thurnish

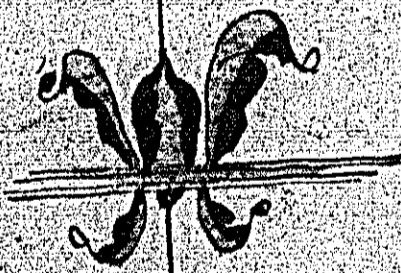
113.

Contents  
A. & B. P.  
1 - 0.0.32  
2 - 0.1.11  
Total 0.1.43

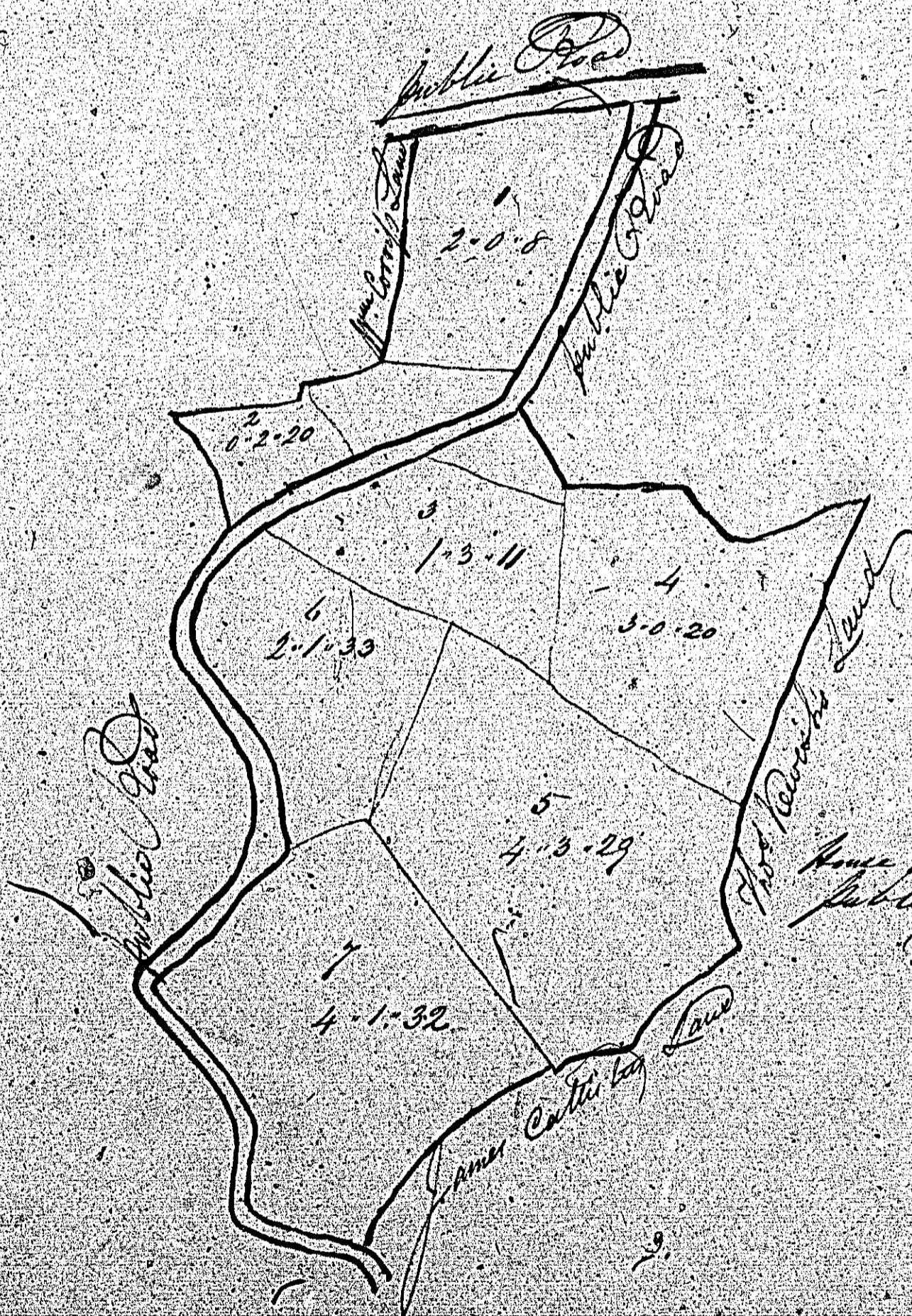
John Miller

John Miller

A Plan and Survey of  
 part of Bolla-cum in the Parish  
 of Ballagh the property of Mr. Thos. Green  
 by Patrick Kelly December 25<sup>th</sup> 1839.  
 114



Scale 3 Chains to an Inch



Contents

No.	Acres	Roods	Poles
1	2	0	8
2	0	2	20
3	1	3	4
4	3	0	20
5	4	3	29
6	2	1	59
7	4	1	32
Home Plots	0	3	15
Public Road	1	2	13
<b>Total</b>	<b>21</b>	<b>3</b>	<b>11</b>