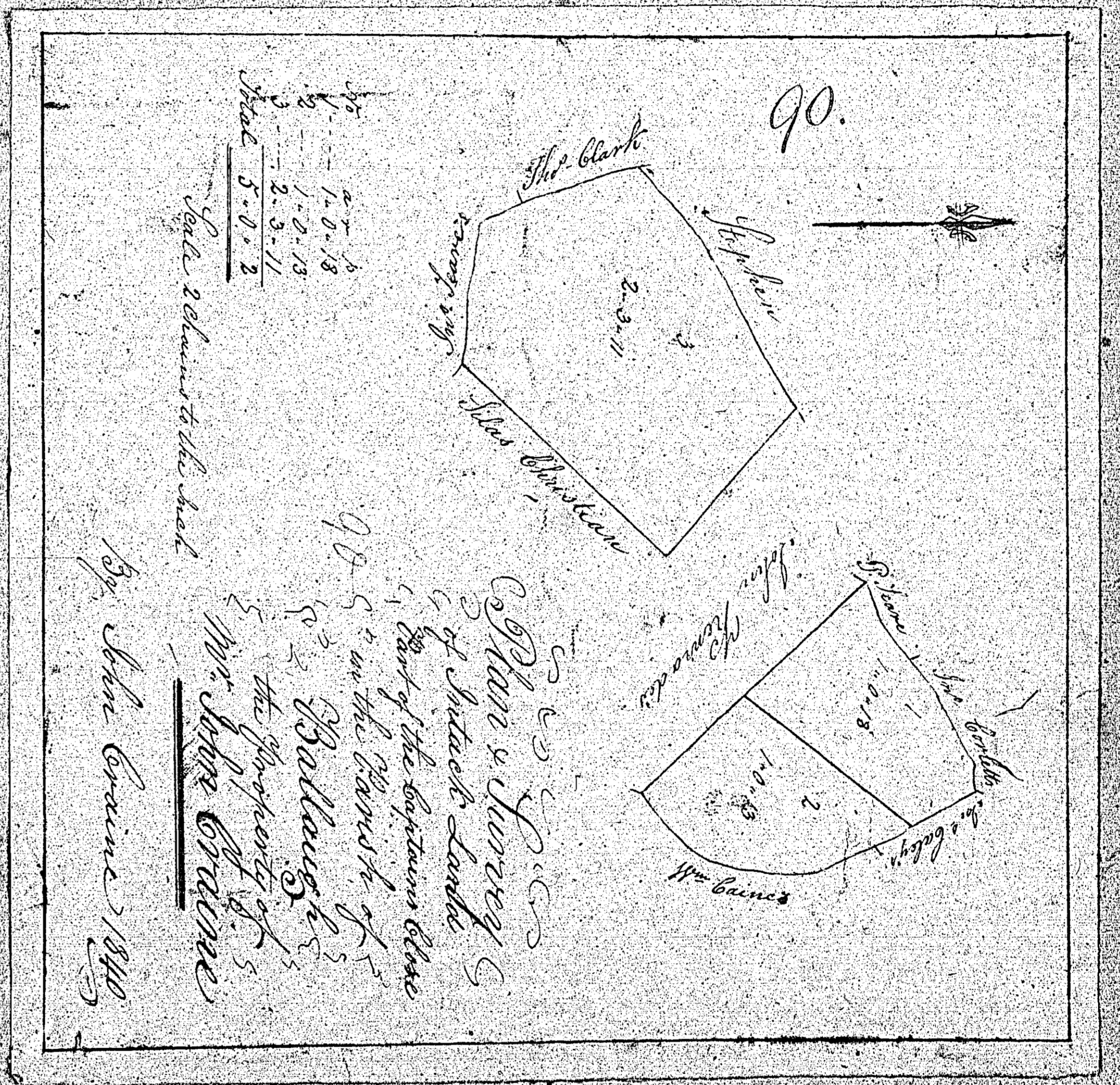


1



1/2 27.18
 1/2 1.0.18
 3/4 2.0.13
 3/4 2.3.11
 Total 5.0.22

Value returned to the land

By John Craine 1840

I do hereby certify
 that the above is a true and correct
 copy of the original
 of the property of
 the property of
 Mr. John Craine

Mrs. Barber
 Mrs. Barber
 Mrs. Barber

Mr. The Barber

15 4.0.13

16 5.3.38

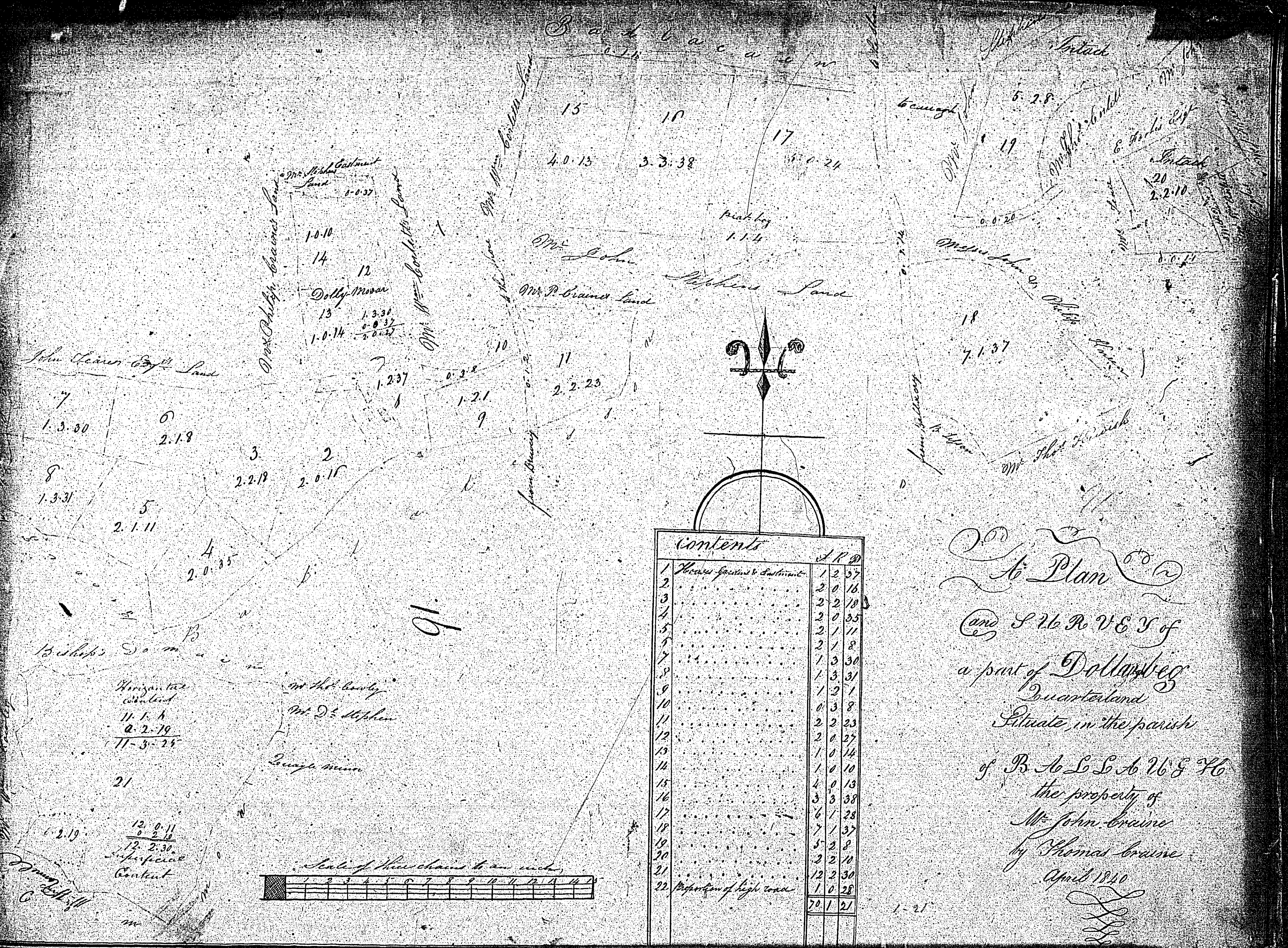
17 5.0.24

Mr. The Barber

19 5.2.28

Mr. The Barber
 Mr. The Barber
 Mr. The Barber

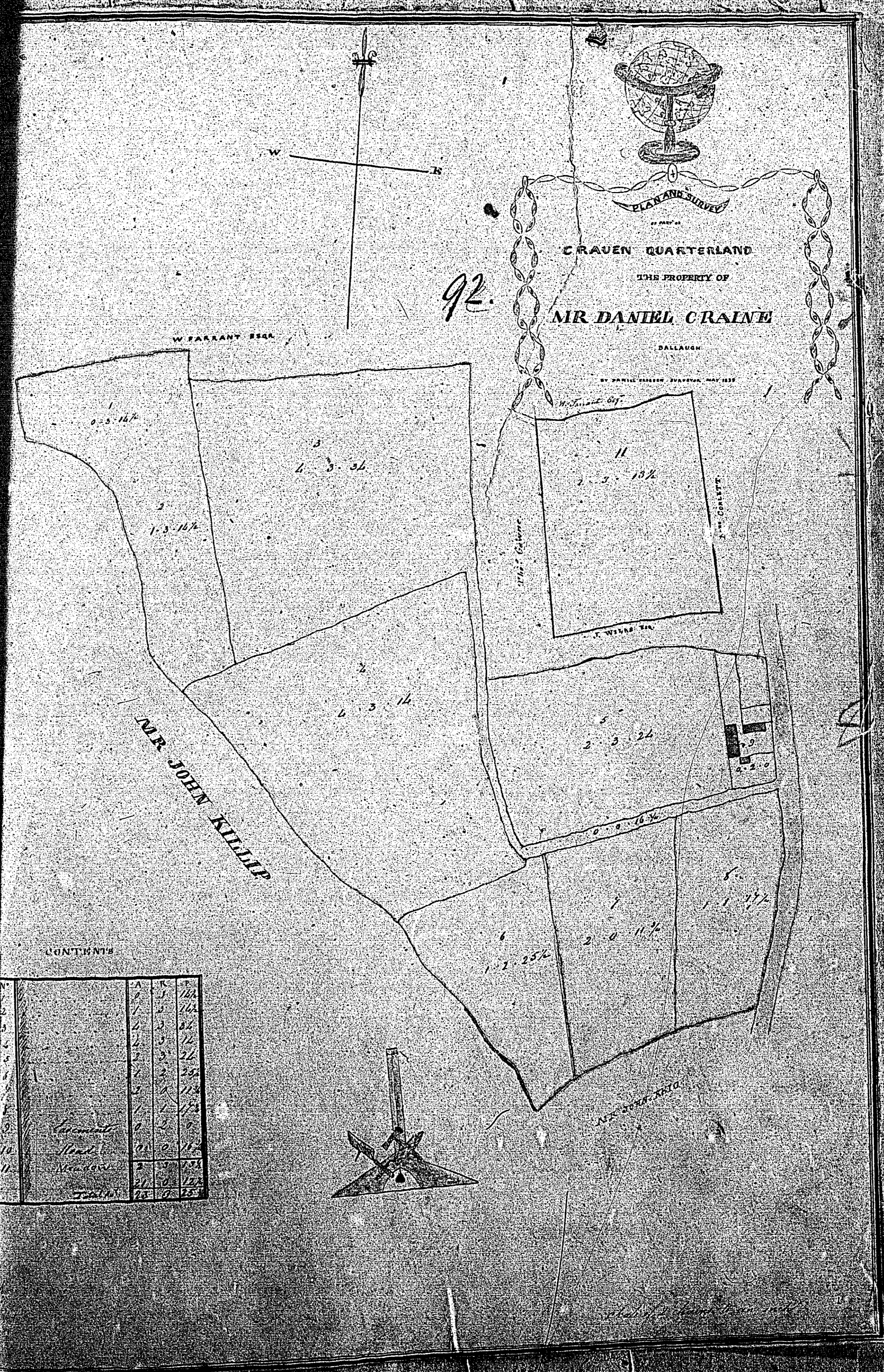
Ballaugh



Contents	
1	12 57
2	2 0 18
3	2 2 19
4	2 0 35
5	2 1 11
6	2 1 8
7	1 3 30
8	1 3 31
9	1 2 1
10	4 3 8
11	2 2 23
12	2 2 27
13	1 0 14
14	1 0 10
15	4 0 13
16	3 3 38
17	6 1 28
18	7 1 37
19	5 2 8
20	3 2 11
21	12 2 30
22	1 0 28
79 1 21	

To Plan
and S 76 R V E T of
a part of Dallarbeg
Quartermund
Situate in the parish
of B S L S A 26 E H
the property of
Mr John Braine
by Thomas Braine
April 1840

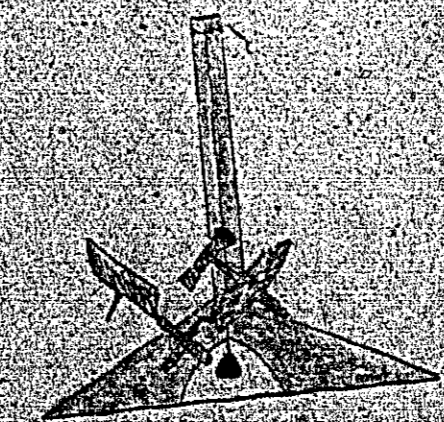
ISLE OF MAN GOVERNMENT: GENERAL REGISTRY
TITHE PLANS: PARISH OF BALLAUGH
 Original coloured (decorative), faint 1:30



92.

CONTENTS

1	110
2	110
3	110
4	110
5	110
6	110
7	110
8	110
9	110
10	110
11	110
12	110
13	110
14	110
15	110
16	110
17	110
18	110
19	110
20	110
21	110
22	110
23	110
24	110
25	110
26	110
27	110
28	110
29	110
30	110
31	110
32	110
33	110
34	110
35	110
36	110
37	110
38	110
39	110
40	110
41	110
42	110
43	110
44	110
45	110
46	110
47	110
48	110
49	110
50	110
51	110
52	110
53	110
54	110
55	110
56	110
57	110
58	110
59	110
60	110
61	110
62	110
63	110
64	110
65	110
66	110
67	110
68	110
69	110
70	110
71	110
72	110
73	110
74	110
75	110
76	110
77	110
78	110
79	110
80	110
81	110
82	110
83	110
84	110
85	110
86	110
87	110
88	110
89	110
90	110
91	110
92	110

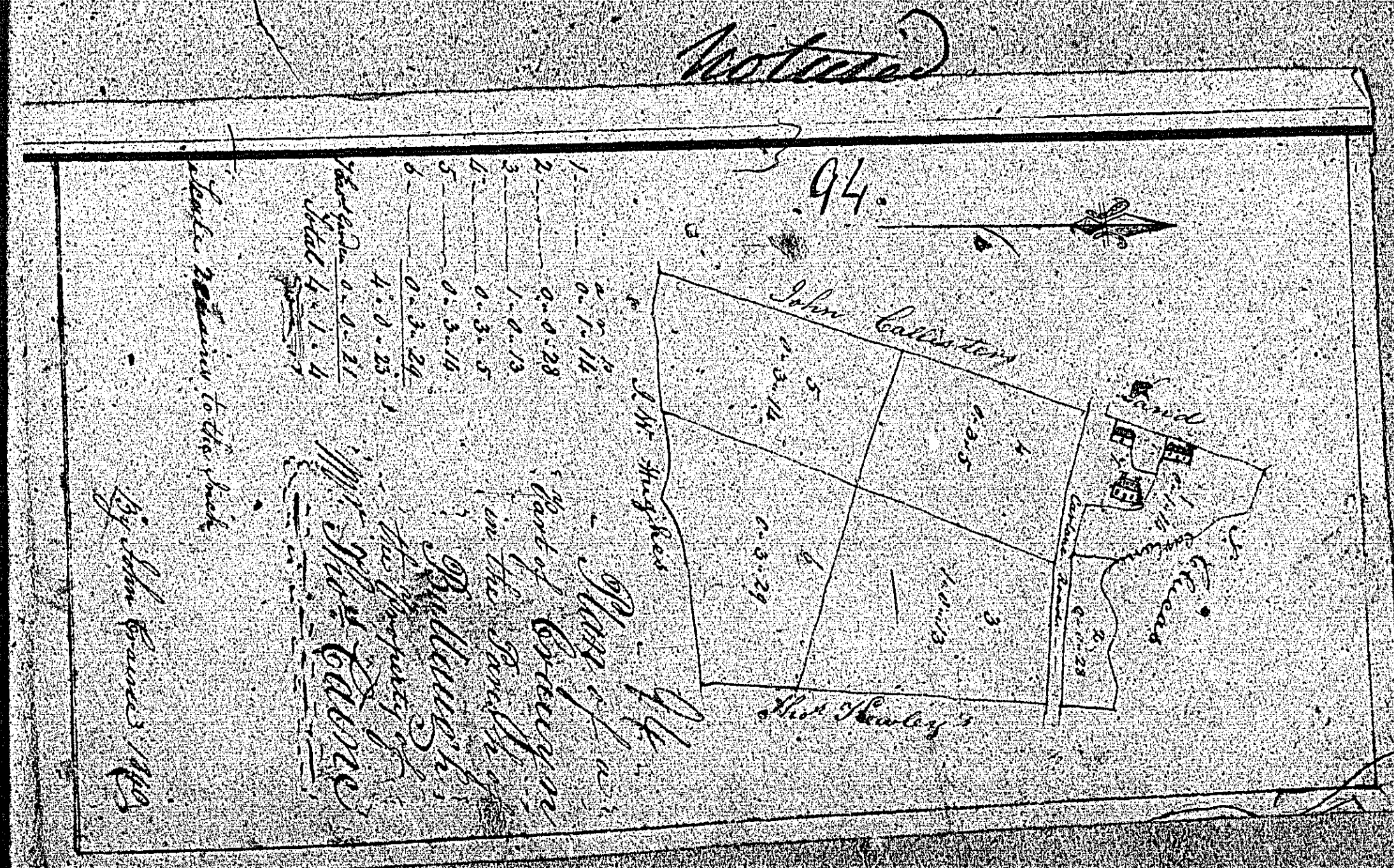
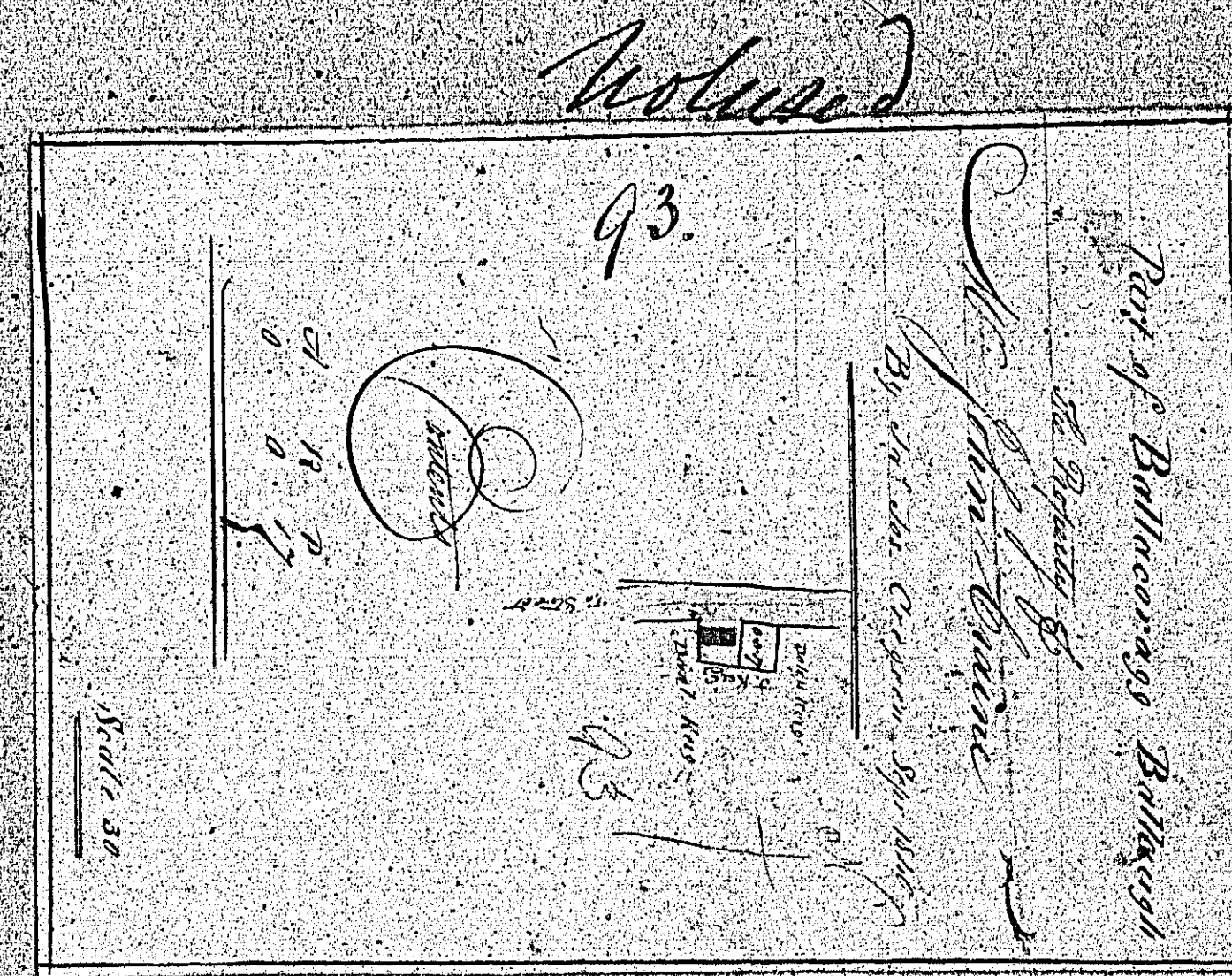


ISLE OF MAN GOVERNMENT: GENERAL REGISTRY
 TITHE PLANS: PARISH OF BALLAUGH

1:30

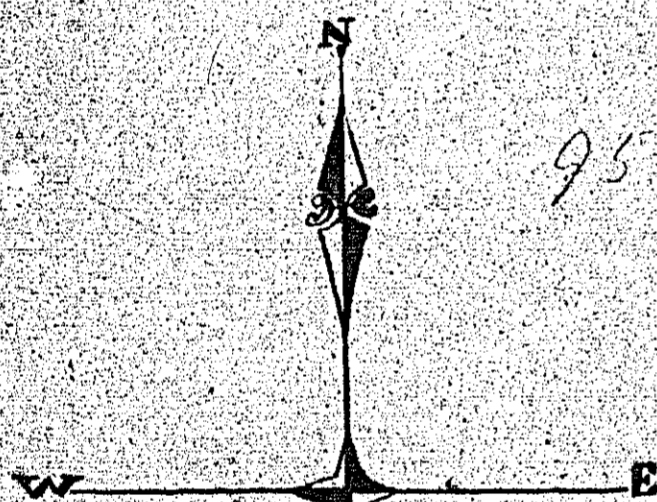
Plan

- 93 Original coloured (decorative)
- 94 Original monotone

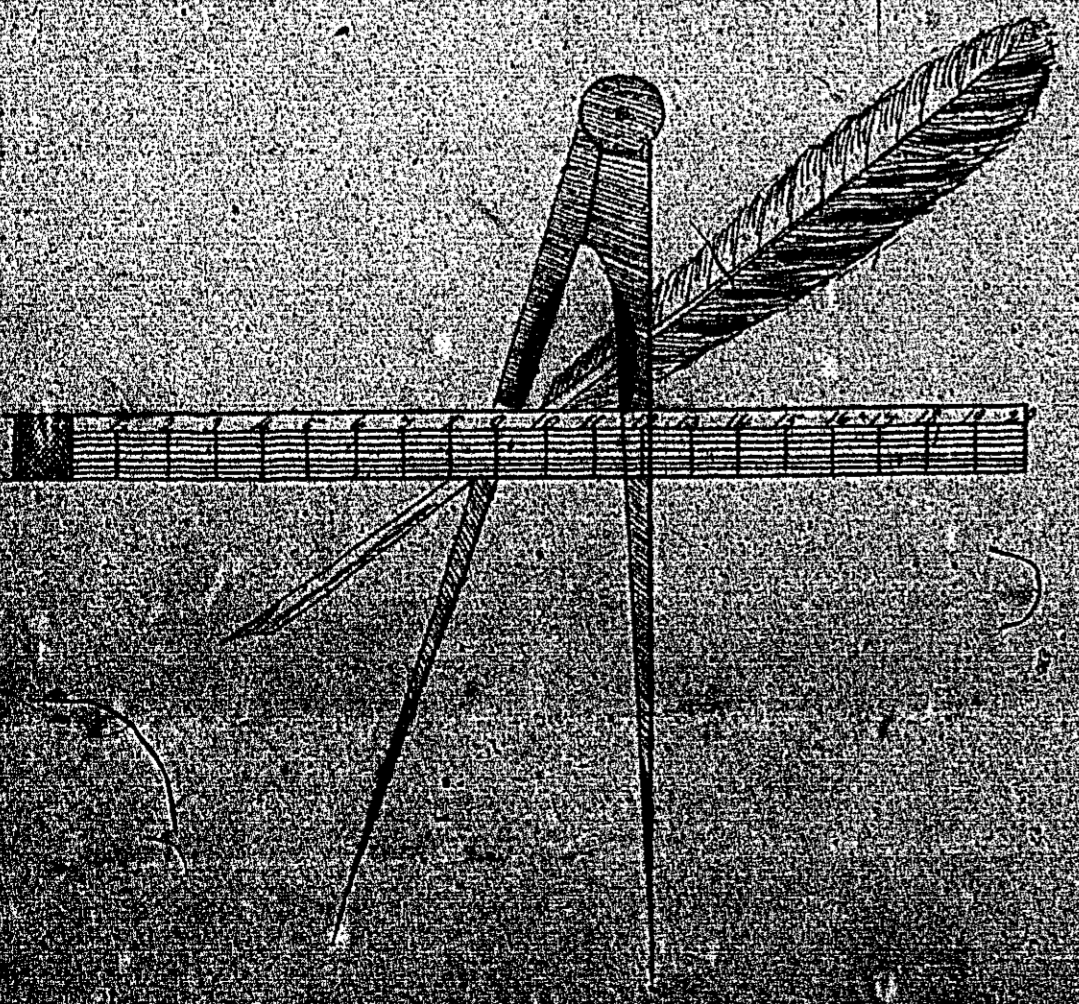


Q S

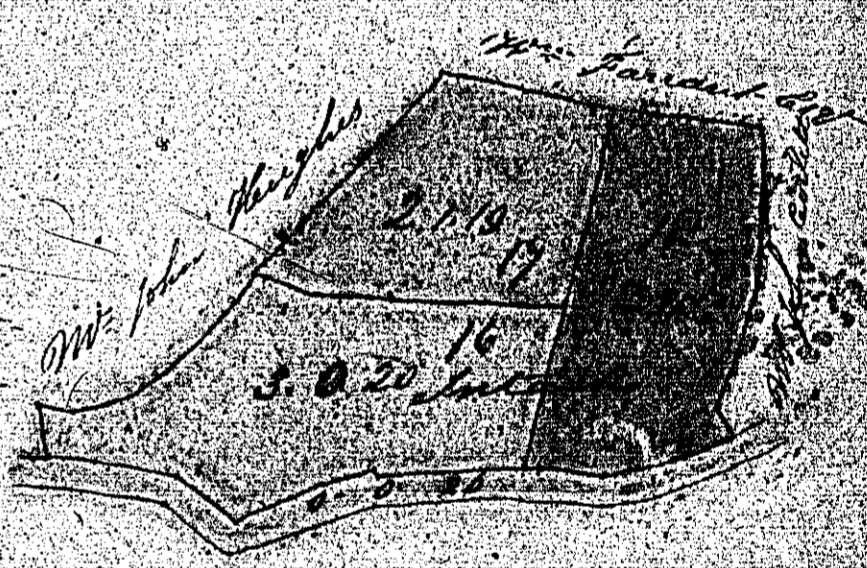
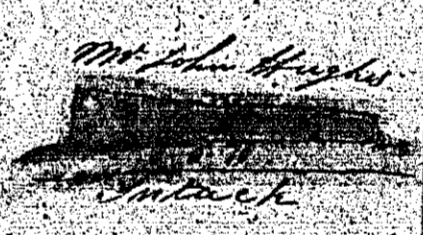
95.196



MAP
and Survey of
of Lots 136
situate in the parish of
B. A. L. S. A. 21. 936
the property of
Mr. Thomas Leamy
of the Parish of



from A. B. Milner *W. the Leamy Land*



95.196

Contents

1	6	22
2	10	1
3	2	30
4	9	14
5	1	20
6	5	20
7	11	37
8	1	20
9	3	20
10	1	20
11	1	20
12	1	20
13	1	20
14	1	20
15	1	20
16	1	20
17	1	20
18	1	20
19	1	20
20	1	20
21	1	20
22	1	20
23	1	20
24	1	20
25	1	20
26	1	20
27	1	20
28	1	20
29	1	20
30	1	20
31	1	20
32	1	20
33	1	20
34	1	20
35	1	20
36	1	20
37	1	20
38	1	20
39	1	20
40	1	20
41	1	20
42	1	20
43	1	20
44	1	20
45	1	20
46	1	20
47	1	20
48	1	20
49	1	20
50	1	20
51	1	20
52	1	20
53	1	20
54	1	20
55	1	20
56	1	20
57	1	20
58	1	20
59	1	20
60	1	20
61	1	20
62	1	20
63	1	20
64	1	20
65	1	20
66	1	20
67	1	20
68	1	20
69	1	20
70	1	20
71	1	20
72	1	20
73	1	20
74	1	20
75	1	20
76	1	20
77	1	20
78	1	20
79	1	20
80	1	20
81	1	20
82	1	20
83	1	20
84	1	20
85	1	20
86	1	20
87	1	20
88	1	20
89	1	20
90	1	20
91	1	20
92	1	20
93	1	20
94	1	20
95	1	20
96	1	20
97	1	20
98	1	20
99	1	20
100	1	20

Not used

ISLE OF MAN GOVERNMENT: GENERAL REGISTRY
TITHE PLANS: PARISH OF BALLAUGH

1:30

Plan

- 97 Original coloured
- 98 Original monotone, faint
- 99 Original monotone, marked

