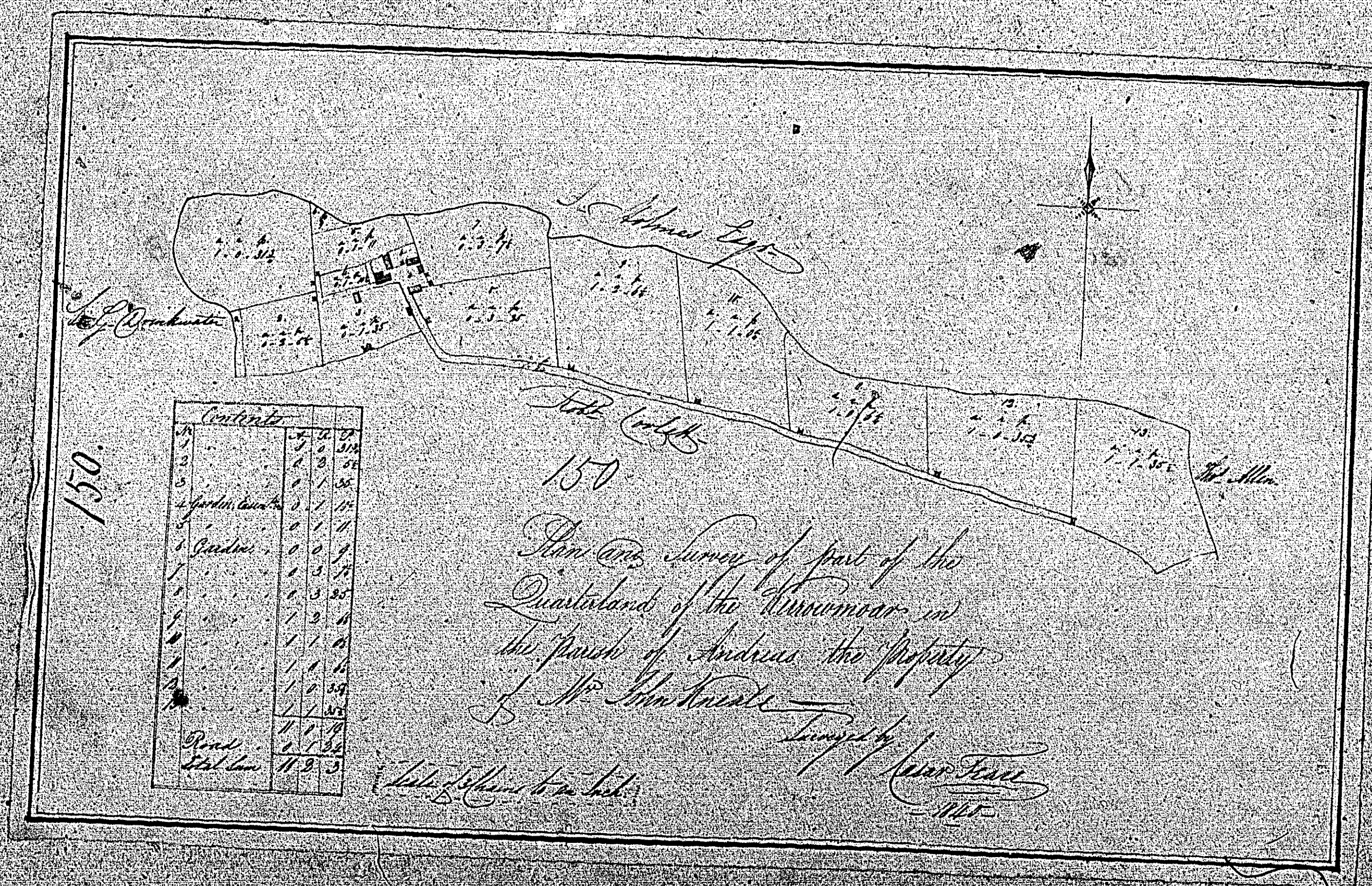


BALMAGUIRE, land part of B. COREY



ISLE OF MAN GOVERNMENT: GENERAL REGISTRY

TITHE PLANS: PARISH OF ANDREAS

Original monotone

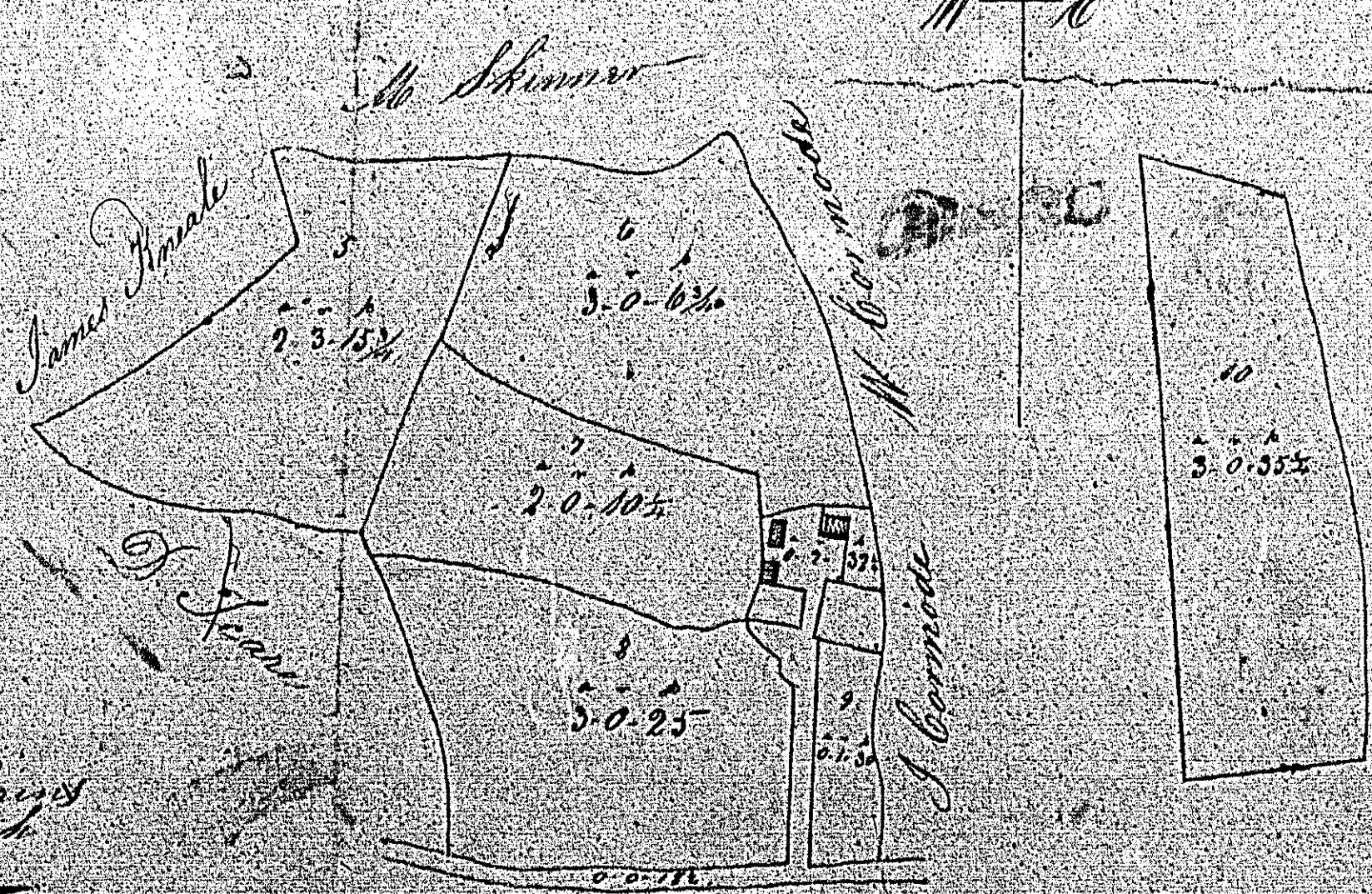
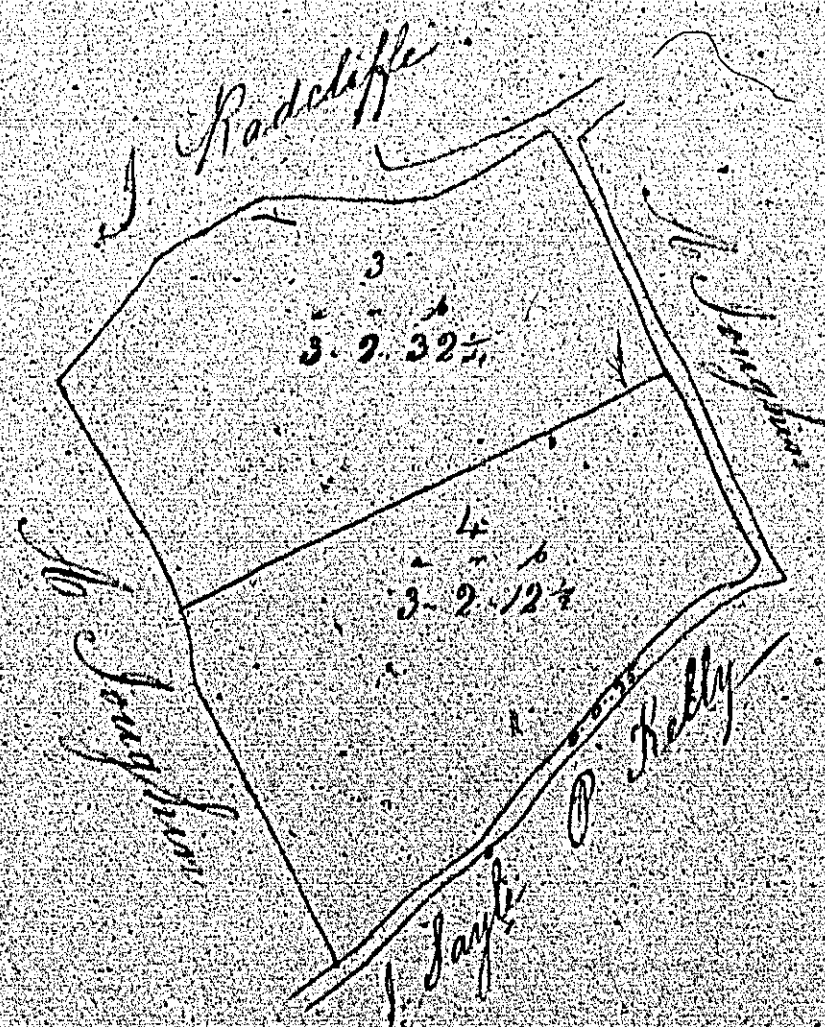
1:30

BALLAHEANEY and part of B. COREY

A Plan of a part of
 the Quarterland of Ballaquane
 in the Parish of Andreas
 the property of
 Mr. John Purcell

157

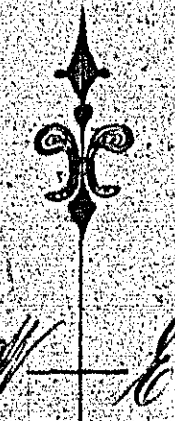
157.



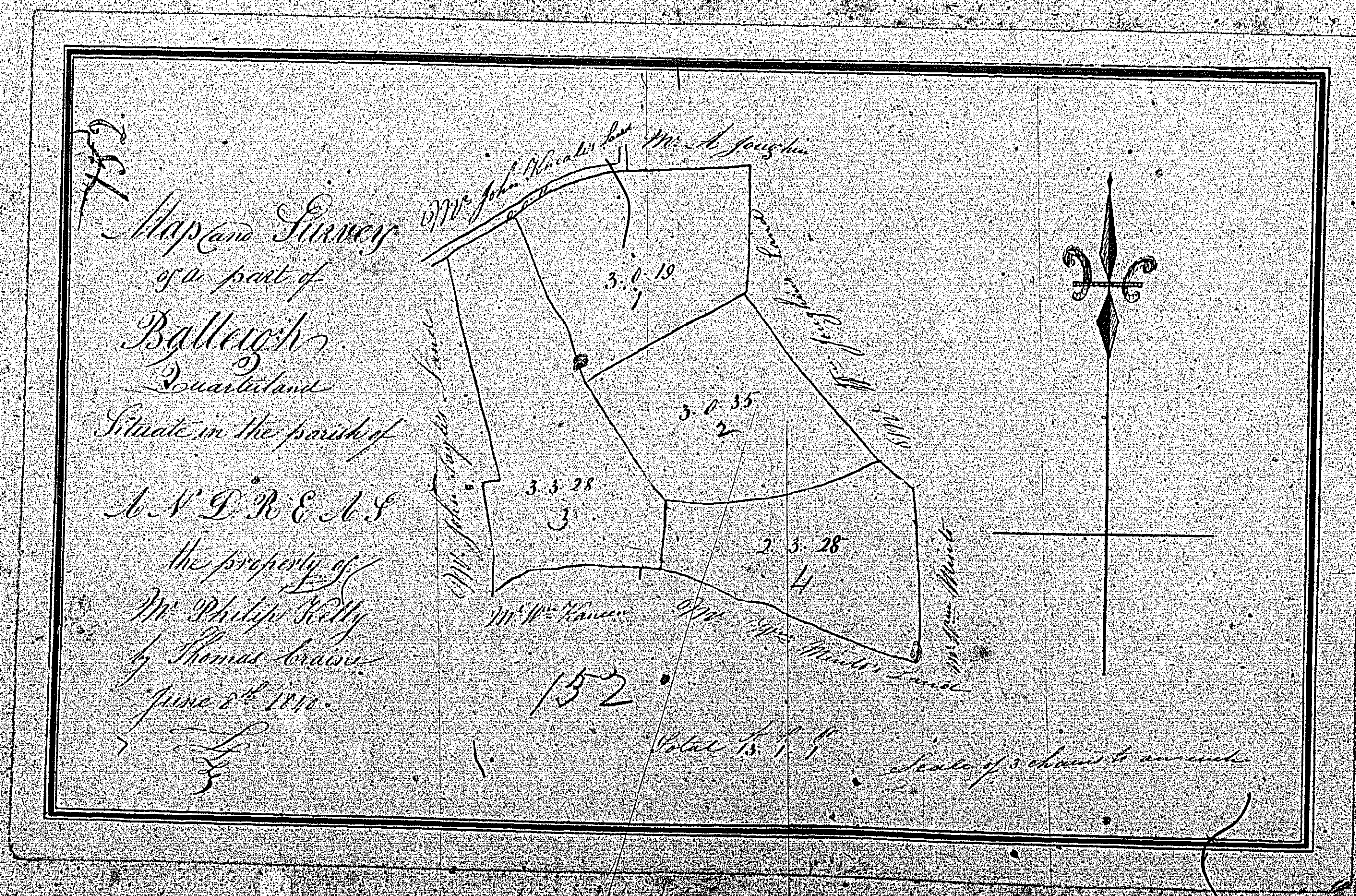
Scale of 3 Chains
 to One Inch

Contents

No.	Acres	Roods	Poles
1	2	2	3 1/4
2	1	0	19
3	5	2	52 1/2
4	5	2	12 1/2
5	5	3	48
6	5	3	63
7	2	0	10 1/2
8	3	0	25 1/2
9	0	1	30
10	5	0	33 1/2
Fields			
Roads & Enclosures			
Total			



Map & Survey
BALLALANEY, and part of B. CURRY



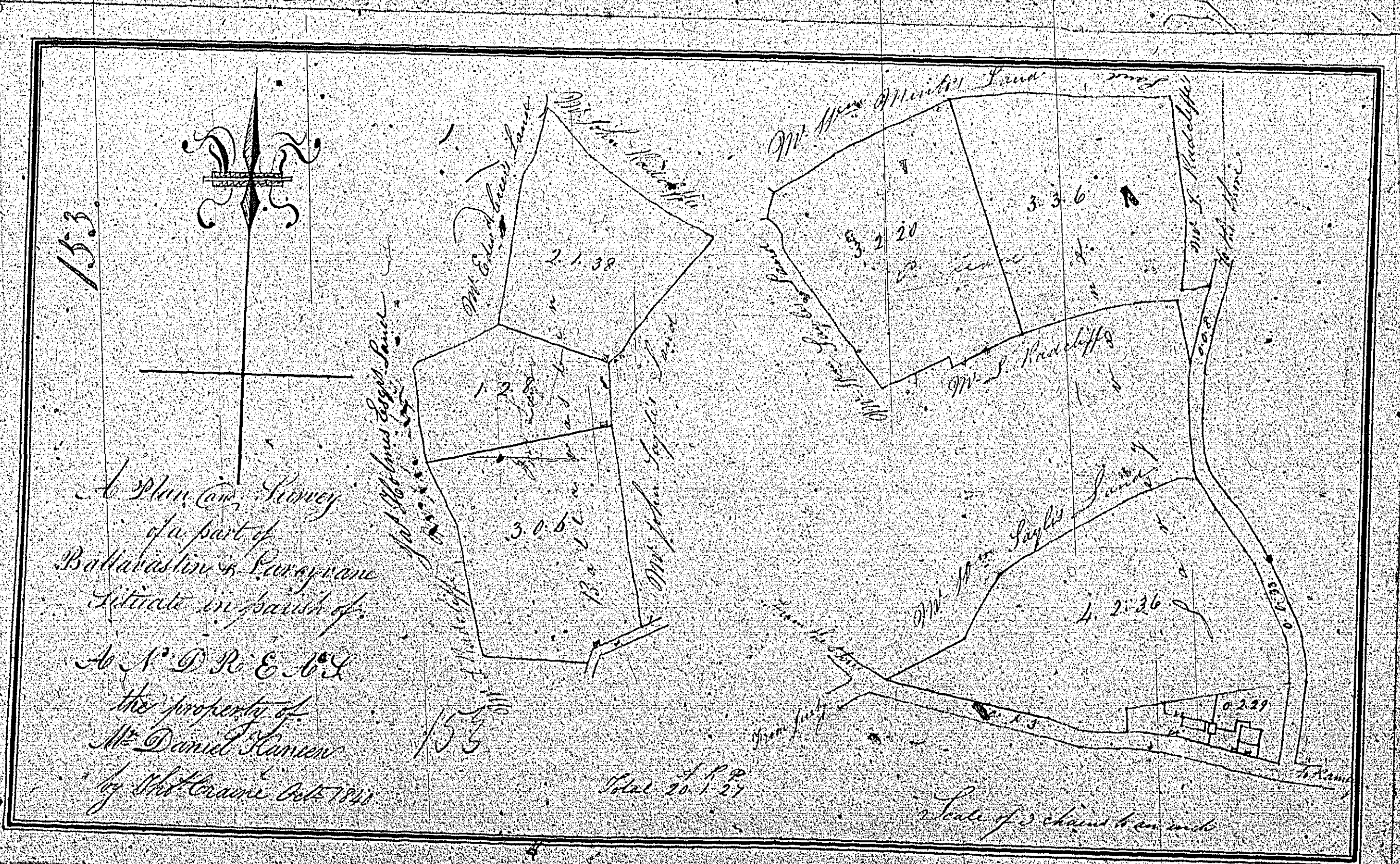
ISLE OF MAN GOVERNMENT: GENERAL REGISTRY

TITHE PLANS; PARISH OF ANDREAS

Original monotone

1:30

BALLALANEY, and part of B-CORRY



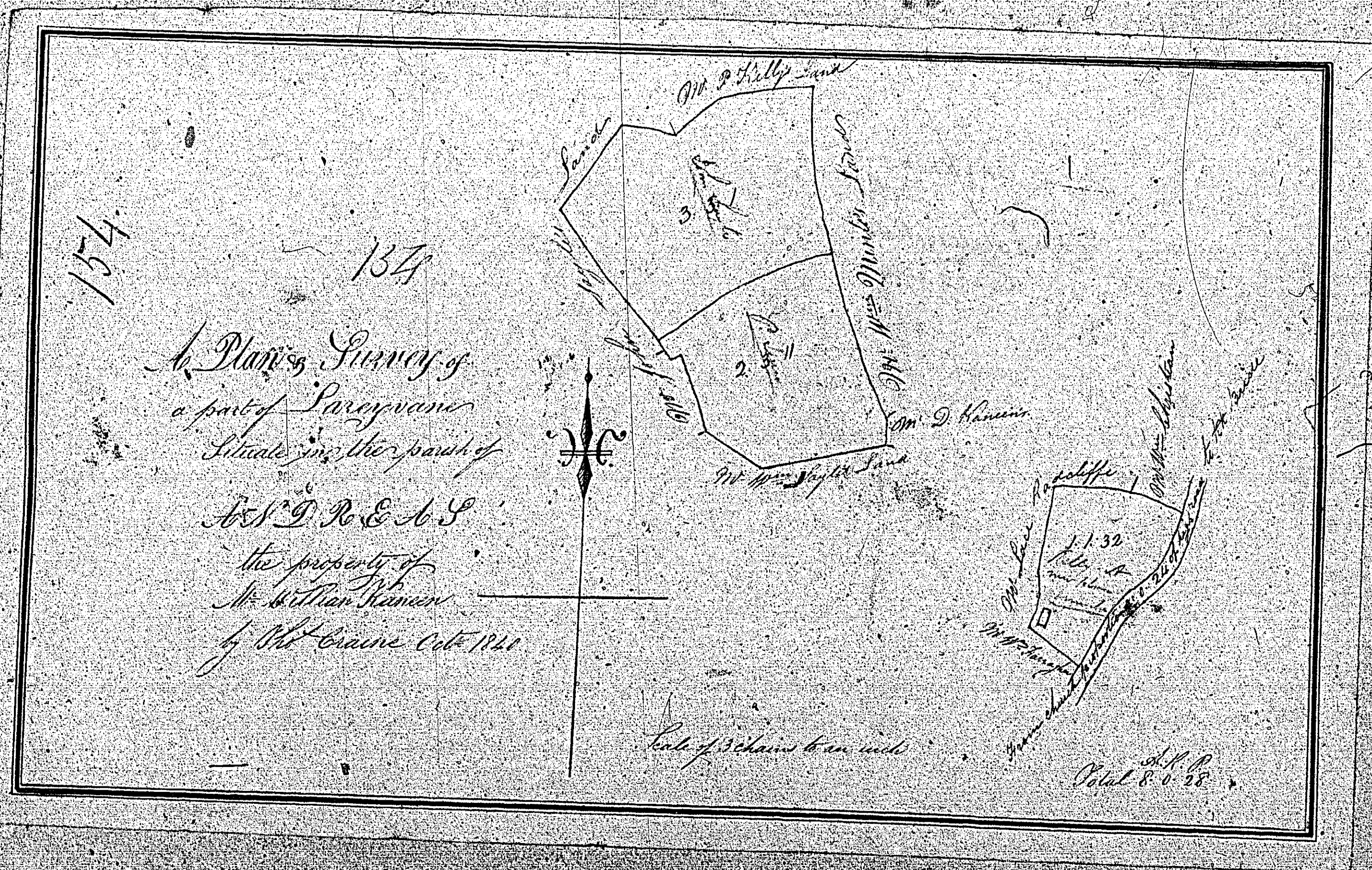
ISLE OF MAN GOVERNMENT: GENERAL REGISTRY

TITHE PLANS: PARISH OF ANDREAS

Original monotone

1:30

BALLABEANDY and part of B-CORRY



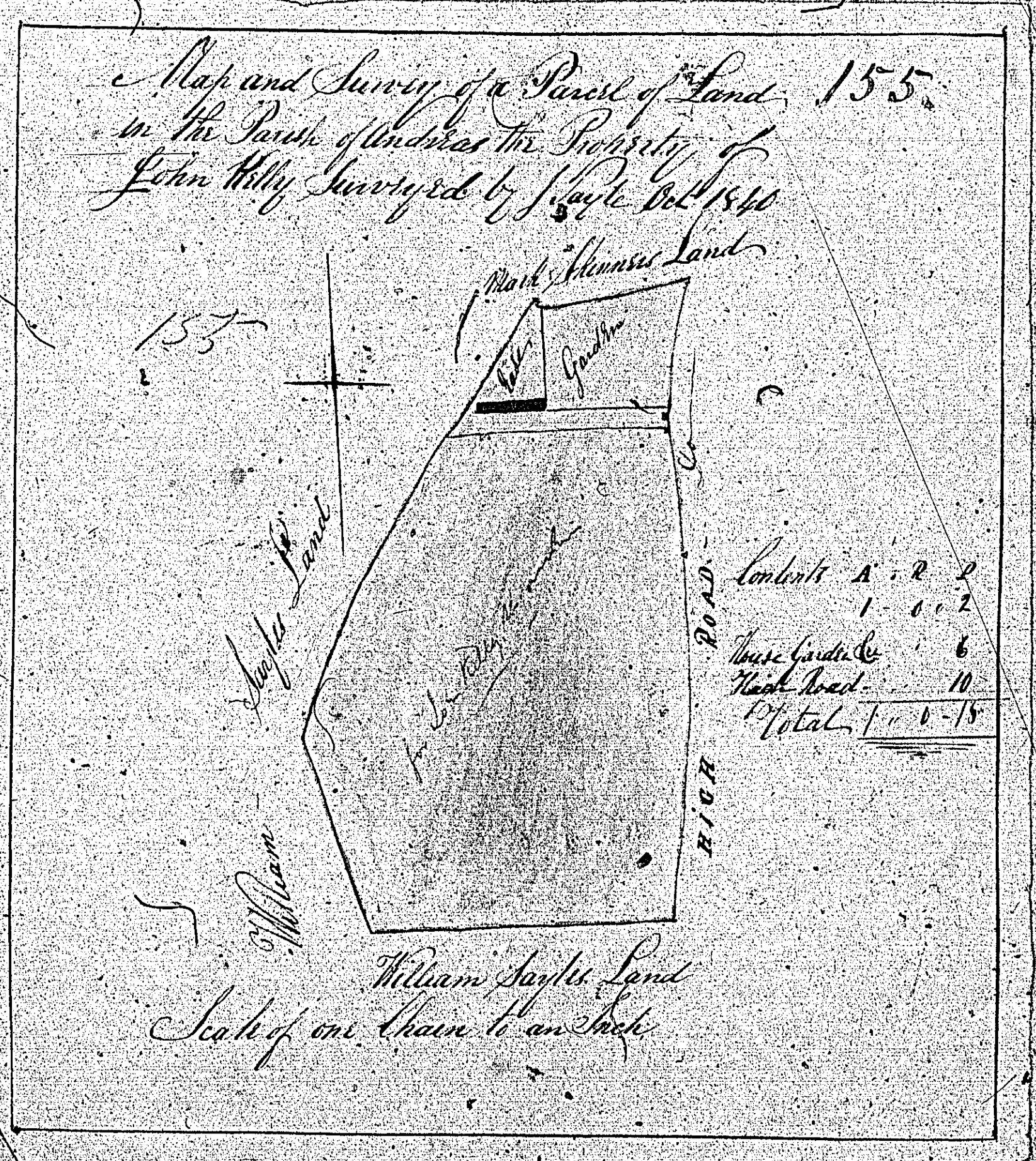
ISLE OF MAN GOVERNMENT: GENERAL REGISTRY

TITHE PLANS: PARISH OF ANDREAS

Original monotone

1:30

155



HABITABLE PART OF THE PARISH OF B. CORRY