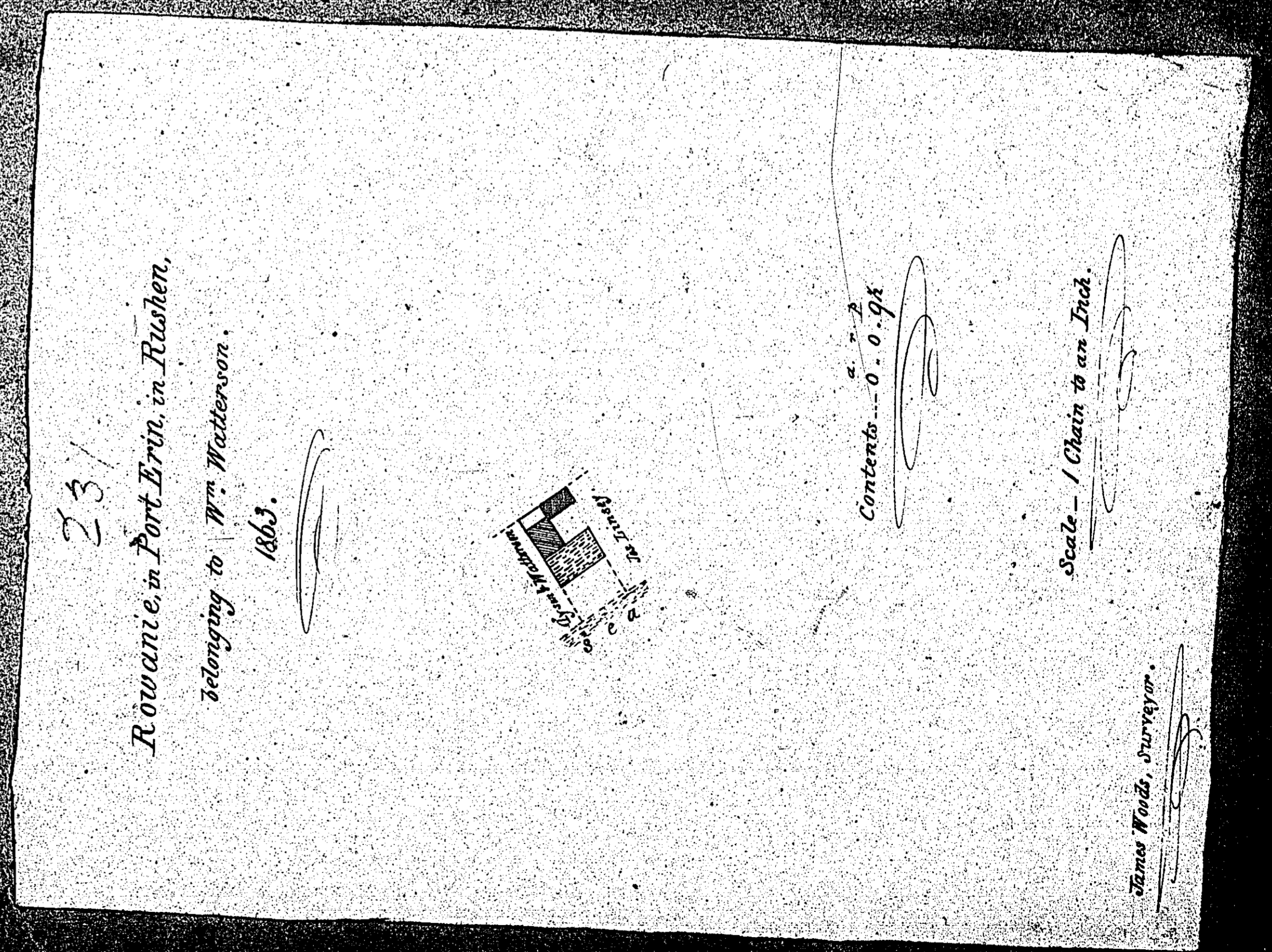
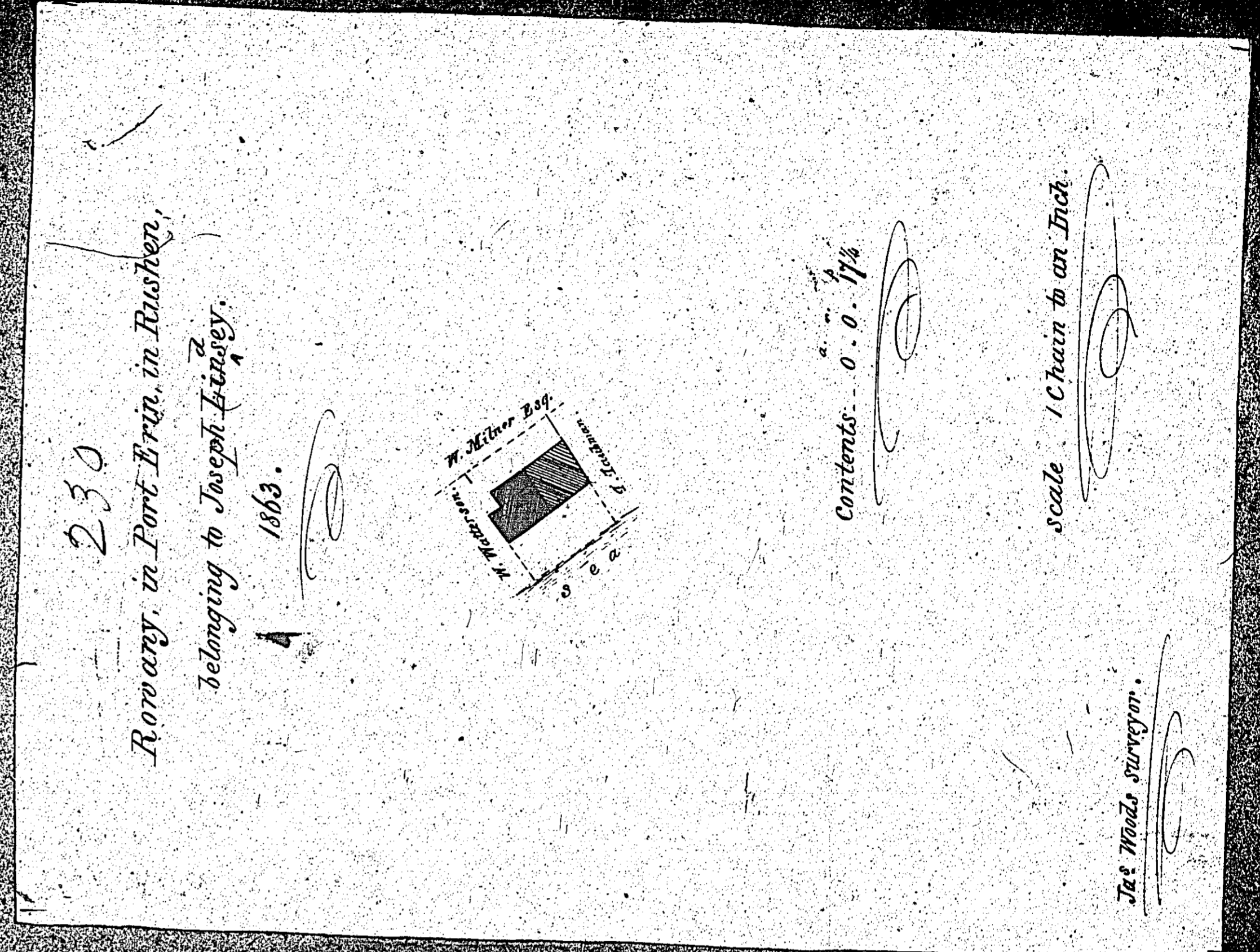


ISLE OF MAN GOVERNMENT: GENERAL REGISTRY
ASYLUM PLANS: PARISH OF RUSHEN

Originals monotone

1:23



ISLE OF MAN GOVERNMENT: GENERAL REGISTRY

ASYLUM PLANS: PARISH OF RUSHEN

Originals monotone

1:23

232

Rowany, in Port Brit in Rushin,

belonging to Gysson & Matterson.

1863.

W. Milner Esq.

W. Milner Esq.

Contents - 0. 0. 0. 18 1/2

Scale - 1 Chain to an Inch.

James Woods, Surveyor.

233

Rowany in Rushen

belonging to W. Milner Esq.

1863.

Shore

John Gavine

Contents - 0. 0. 0. 10

Scale - 2 Chains to an Inch.

James Woods, Surveyor.

ISLE OF MAN GOVERNMENT: GENERAL REGISTRY

ASYLUM PLANS: PARISH OF RUSHEN

Original monotone

1:23

*Part of
Ballibrals in Rushen
belonging to
G. H. Gary Esquire*

234

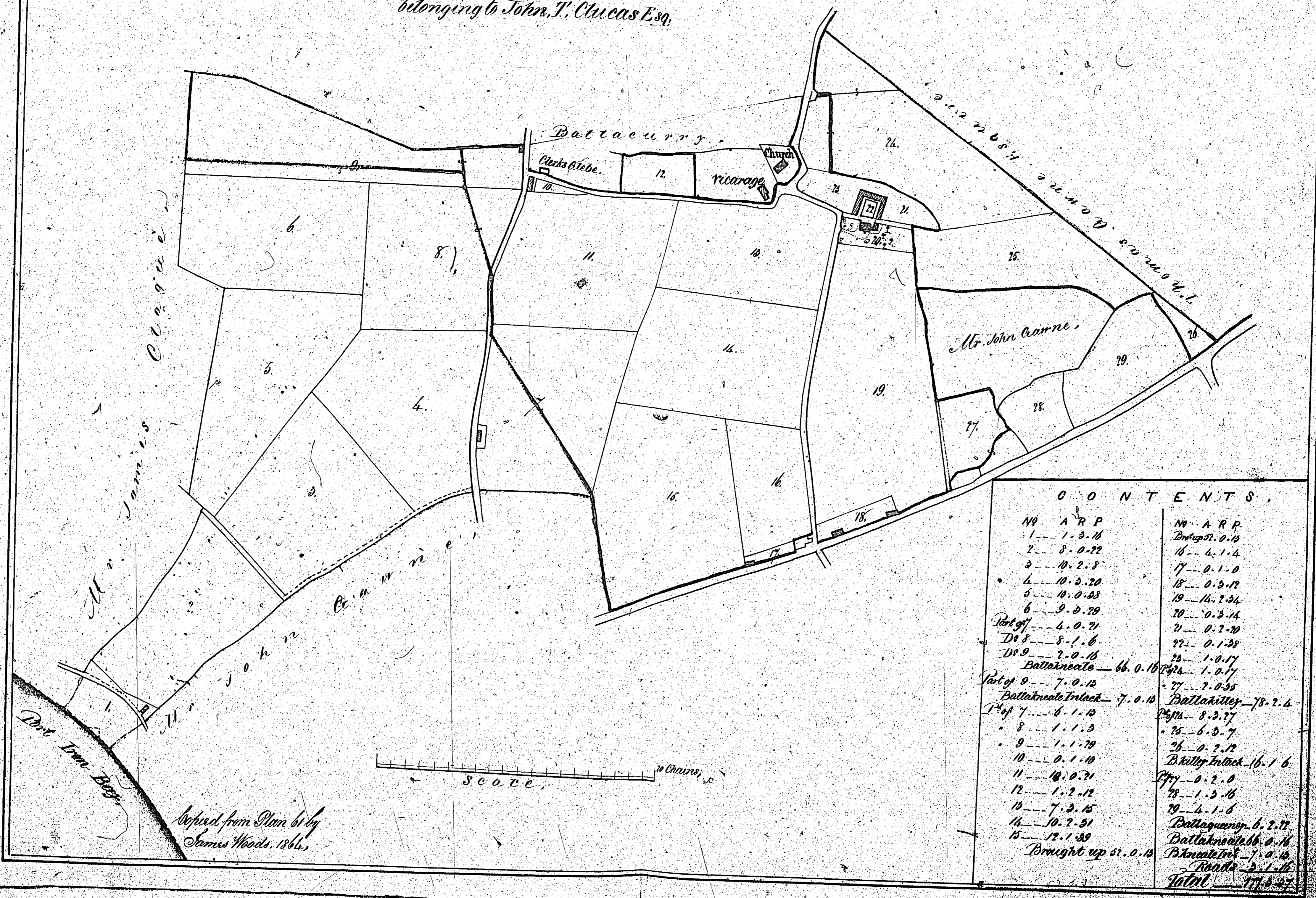


Content 0-0-33

Scale & Plans

The following plan
is not numbered
but 235 is
pencilled on the back

*Ballakilly & Ballakneate
in Rushen
belonging to John T. Clucas Esq.*



C O N T E N T S

No	ARP	No	ARP
1	1.3.16	16	4.1.4
2	8.0.22	17	0.1.0
3	10.2.3	18	0.3.12
4	10.5.20	19	14.2.34
5	10.0.23	20	0.3.14
6	9.3.29	21	0.2.20
Part of 7	4.0.21	22	0.1.28
Do 8	8.1.6	23	1.0.17
Do 9	2.0.16	24	1.0.17
Ballakneate	66.0.18	25	7.0.35
Part of 9	7.0.12	Ballakilly	78.2.4
Ballakneate Intack	7.0.12	Do 26	8.3.17
Part of 7	6.1.12	Do 27	6.3.7
8	1.1.3	28	0.2.12
9	1.1.19	Ballilly Intack	16.1.6
10	0.1.10	Do 29	0.2.0
11	14.0.21	30	1.3.16
12	1.2.12	31	4.1.6
13	7.3.15	Ballagueny	6.2.12
14	10.2.31	Ballakneate	0.14
15	12.1.38	Ballakneate Intack	7.0.12
Brought up	61.0.13	Road	2.1.11
		TOTAL	771.3.47

*Revised from Plan by
James Woods, 1864*

ISLE OF MAN GOVERNMENT: GENERAL REGISTRY
ASYLUM PLANS: PARISH OF RUSHEN

Original coloured

1:23

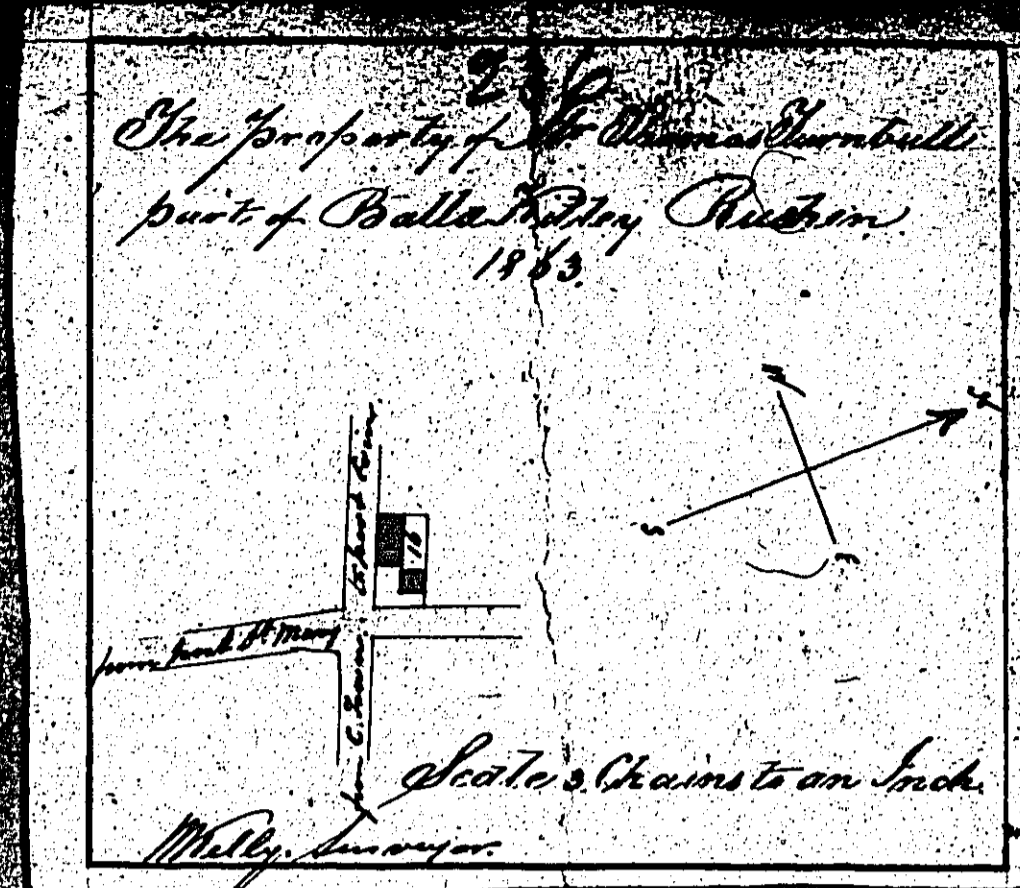
235

ISLE OF MAN GOVERNMENT: GENERAL REGISTRY

ASYLUM PLANS: PARISH OF RUSHEN

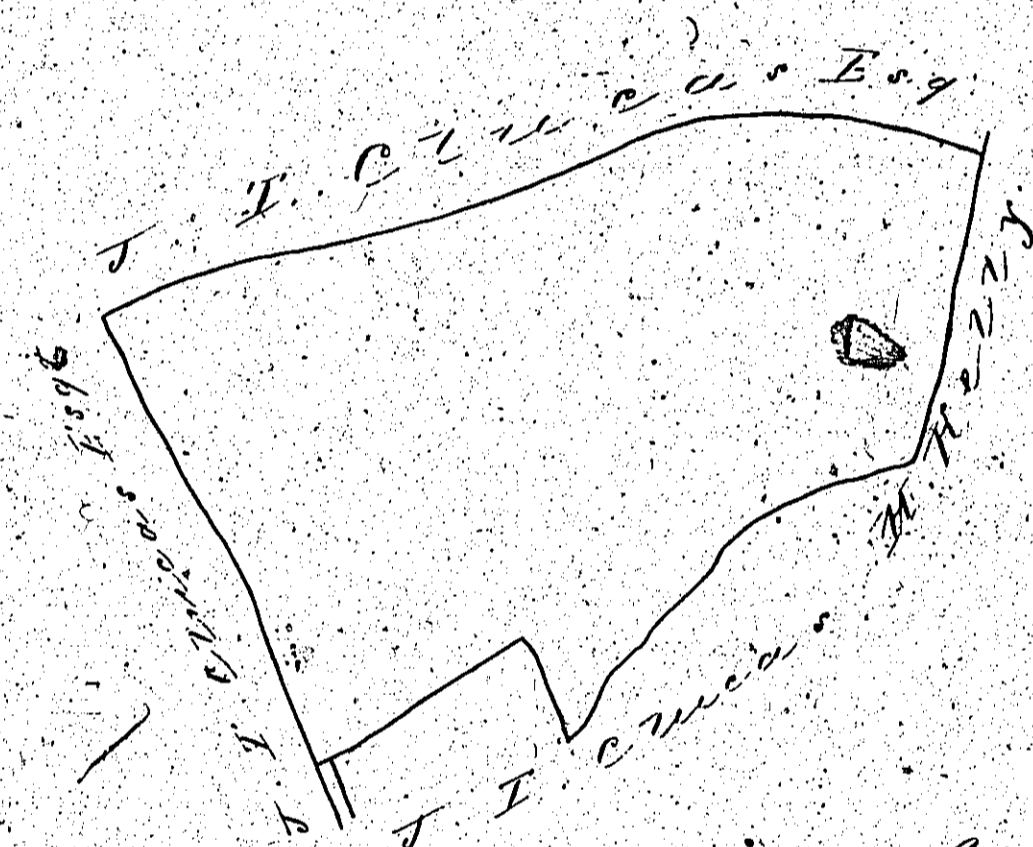
- 236 Original coloured (decorative)
- 237 Original monotone
- 238 Original coloured (decorative)
- 239 Original coloured (decorative)

1:23



237

*Intact in Rushen,
Belonging to Two Owners*



~~136~~ Contento 7-3-22

Scale 3 Chains

*Copied from plan 84 by
J. W. Wood Surveyor 1883*