

ISLE OF MAN GOVERNMENT: GENERAL REGISTRY

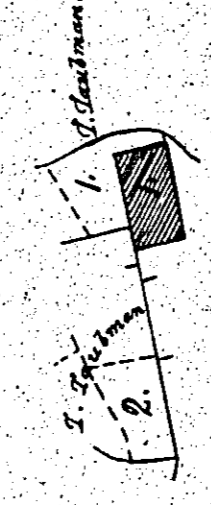
ASYLUM PLANS: PARISH OF RUSHEN

Originals monotone

1:23

(196)

Intack
in Port Erin, in Rushen.
Belonging to John Heggeer.
1863.



Contents


No. 1	0. 0. 64
2	0. 0. 24
Total	0. 0. 9

Scale - 1 Chain to an Inch

W. H. Mordaunt Surveyor

Intack in Rushen
Belonging to Jas Clague

(197)



Contents 0-0-4

Scale 1 Chain

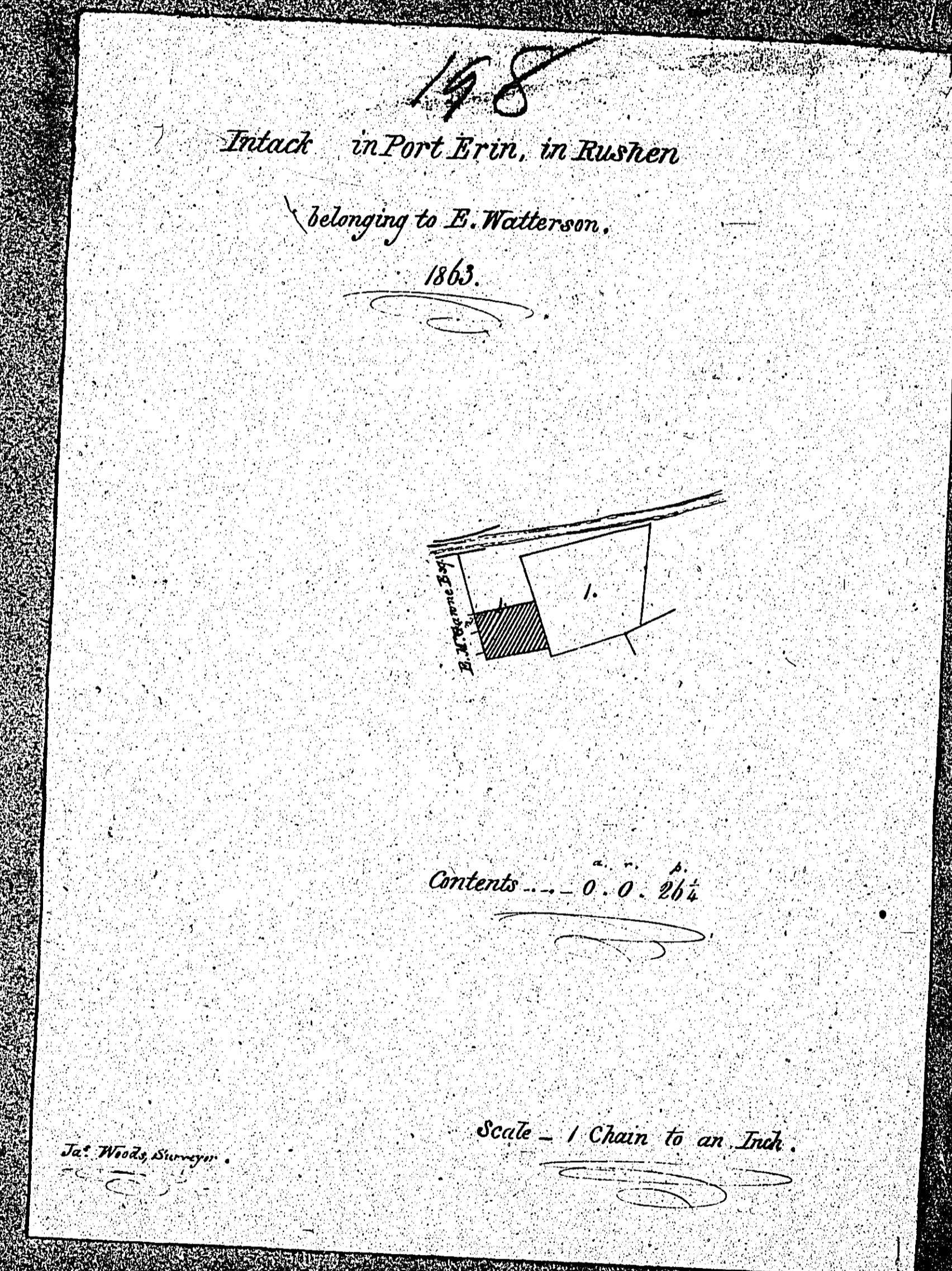
W. H. Mordaunt Surveyor 1863

ISLE OF MAN GOVERNMENT: GENERAL REGISTRY

ASYLUM PLANS: PARISH OF RUSHEN

Original monotone

1:23



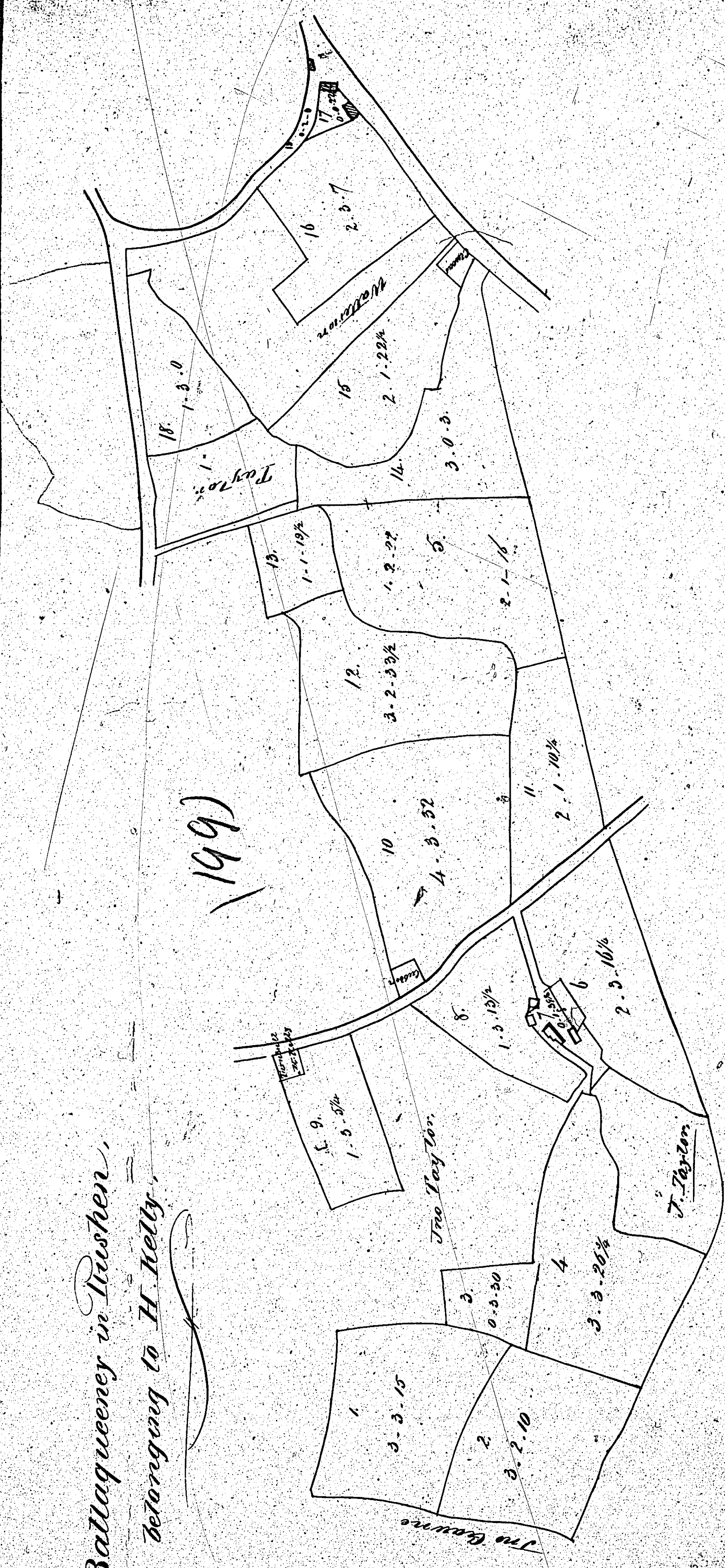
ISLE OF MAN GOVERNMENT: GENERAL REGISTRY
ASYLUM PLANS: PARISH OF RUSHEN

Original monotone

1:23

*Ballaqueneey in Twushen,
belonging to H.nelly.*

(199)



Scale 3 Chains to an Inch.

Contents 46.0.142

*Original from 1836
J. Woods 1863*

2-1-16
1-2-72

ISLE OF MAN GOVERNMENT: GENERAL REGISTRY

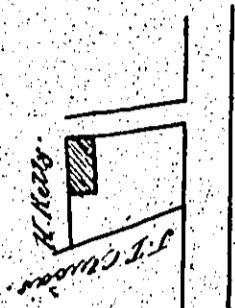
ASYLUM PLANS: PARISH OF RUSHEN

Originals monotone

1:23

200

*Balloguenny in Rushen
Belonging to Henry Curwen.*



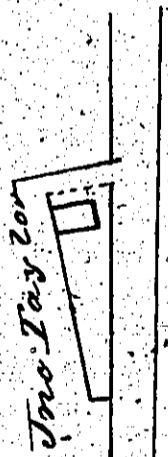
Contents 0.0.1874

Scale 2 Chains to an Inch

Wm. Curwen Esq.

201

*Balloguenny in Rushen
Belonging to Edmund Curwen*



Contents 0.0.1874

Scale 2 Chains to an Inch

Wm. Curwen Esq.

ISLE OF MAN GOVERNMENT: GENERAL REGISTRY

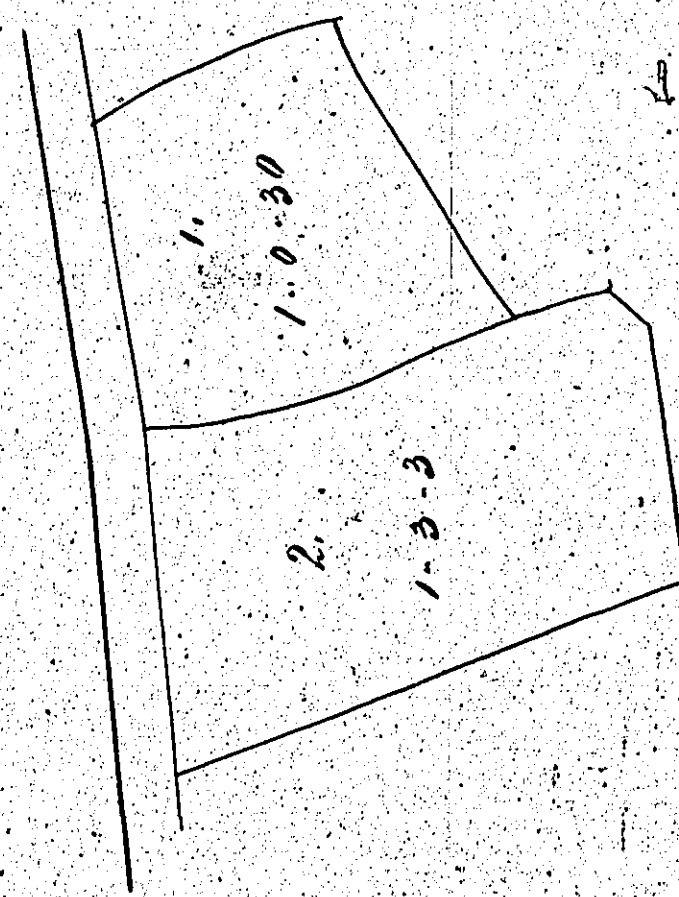
ASYLUM PLANS: PARISH OF RUSHEN

Originals monotone

1:23

*Ballaqueneey in Rushen
belonging to Thos' Burnside.*

(203)



Contents 2.3.53

Scale of 2 chains

*Copy made by
J. W. ... 1885*

202

*Ballaqueneey in Rushen
belonging to Samuel Gate.*



Contents 0.0.18

Scale of 2 chains

*Copy made by
J. W. ... 1885*

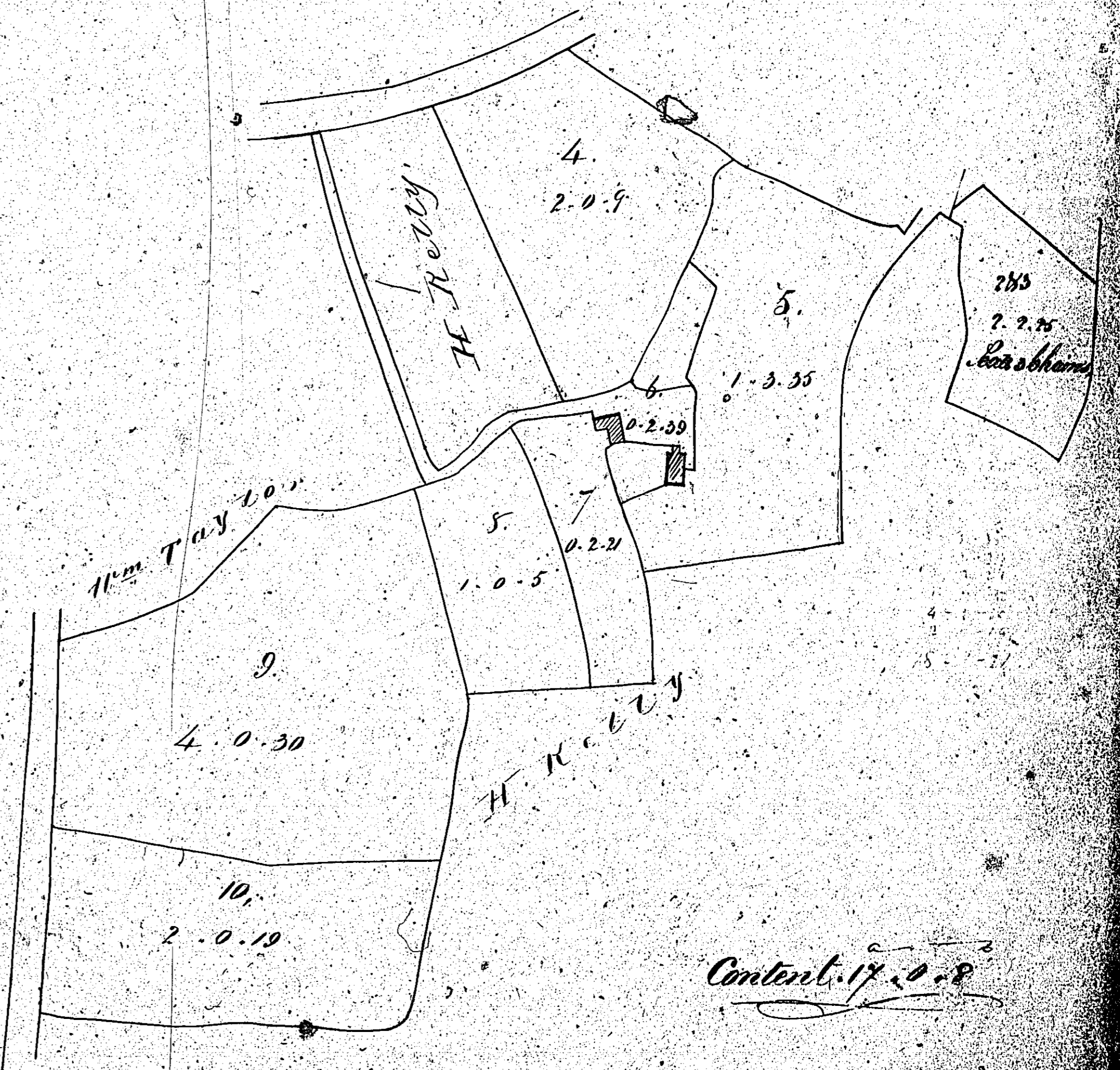
ISLE OF MAN GOVERNMENT: GENERAL REGISTRY

ASYLUM PLANS: PARISH OF RUSHEN

Original monotone

1:23

*Ballaquency in Rushen
belonging to Mrs Taylor (904)*



Content 17.0.8

Scale 2 Chains to an Inch

*Original from the
M...*