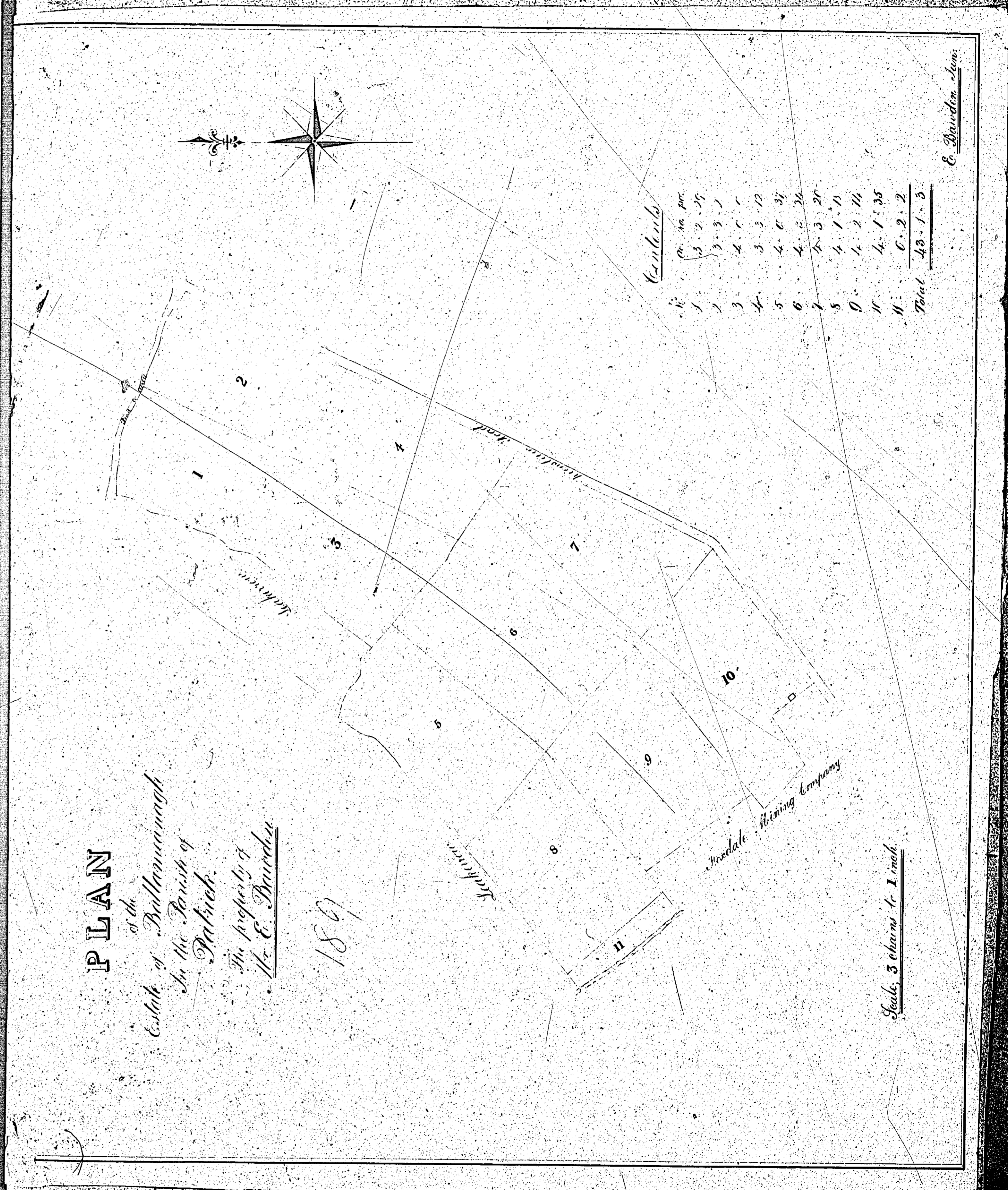


ISLE OF MAN GOVERNMENT: GENERAL REGISTRY
 ASYLUM PLANS: PARISH OF PATRICK

Original coloured

1:23

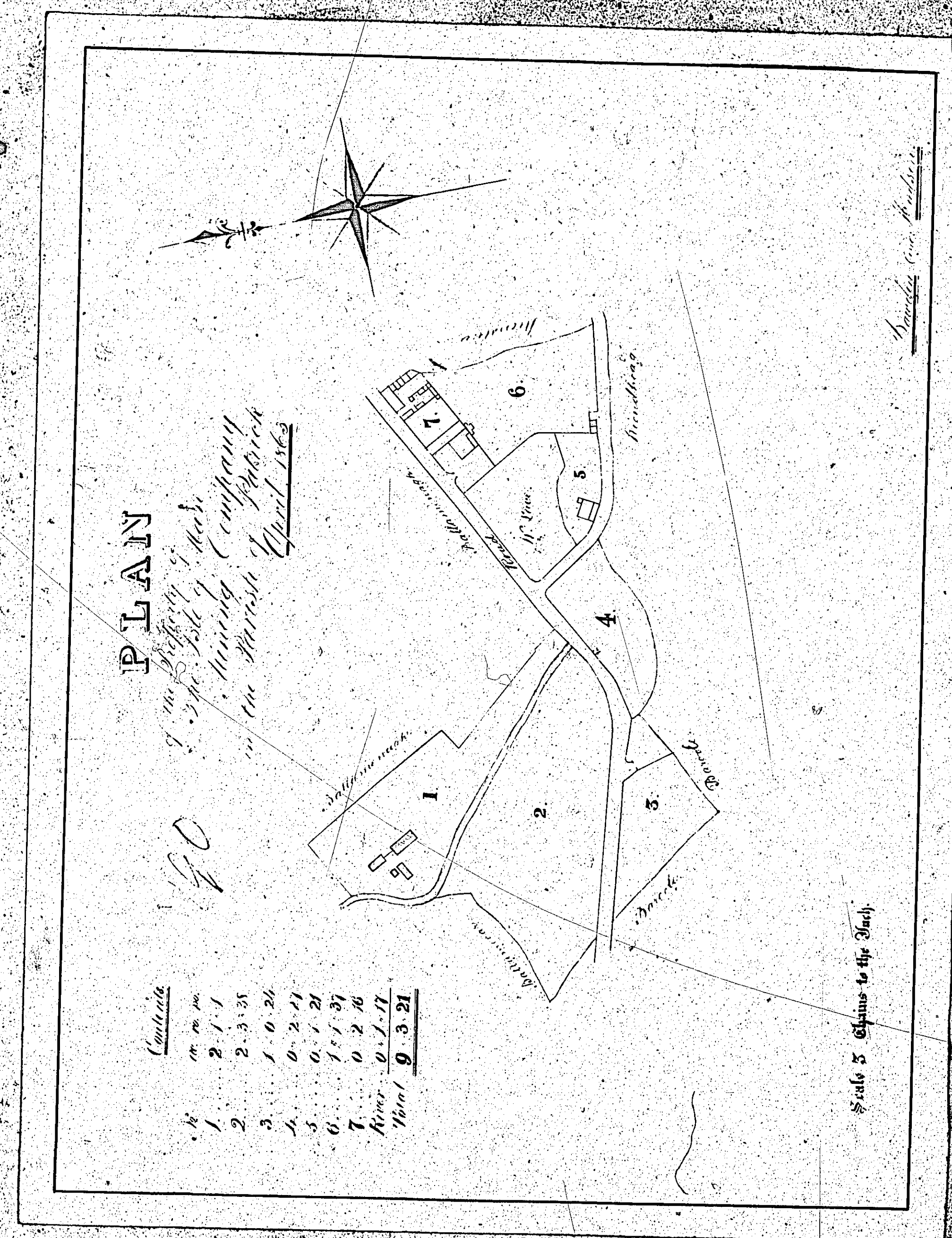


ISLE OF MAN GOVERNMENT: GENERAL REGISTRY

ASYLUM PLANS: PARISH OF PATRICK

Original coloured

1:23



ISLE OF MAN GOVERNMENT: GENERAL REGISTRY

ASYLUM PLANS: PARISH OF PATRICK

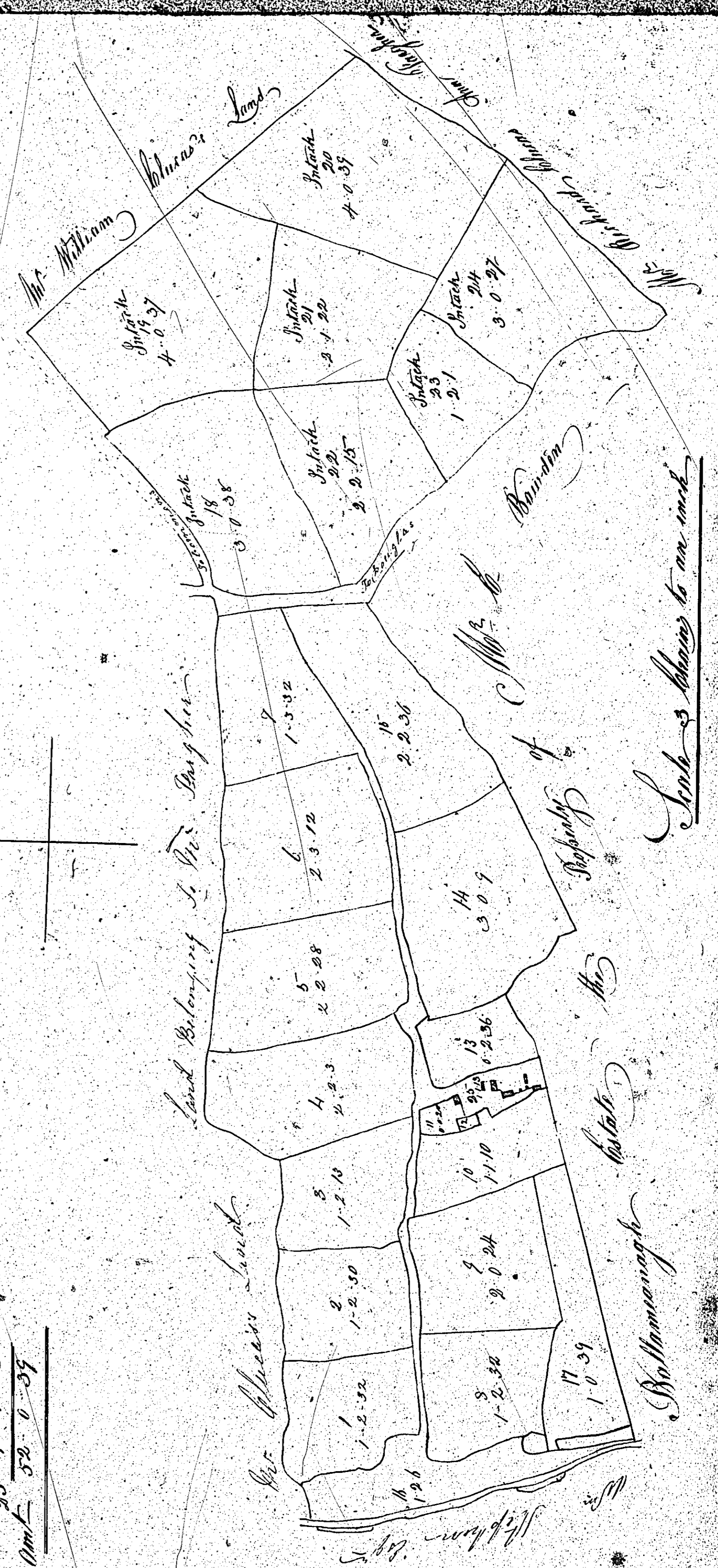
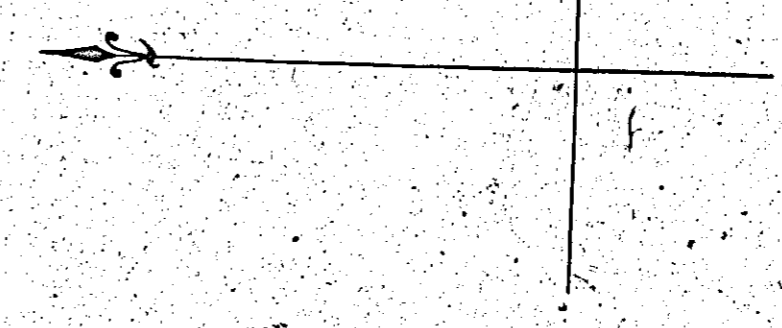
Original monotone

1:23

191

No.	Ac.	R.
1	1	2.32
2	1	2.30
3	1	2.19
4	2	2.3
5	2	2.28
6	3	3.22
7	1	3.52
8	1	3.44
9	1	1.22
10	1	1.22
11	0	0.5
12	0	2.36
13	0	2.56
14	2	2.56
15	2	2.6
16	1	1.52
17	3	0.56
18	3	0.52
19	4	0.52
20	4	1.22
21	2	2.15
22	2	2.15
23	1	2.1
24	3	0.27
25	1	1.15
Total		52.0.39

Plan and Summary of the Estates of the Asylum in the Parish of Patrick, in the County of St. John's, in the Island of Man, 1865, by David Kelly.



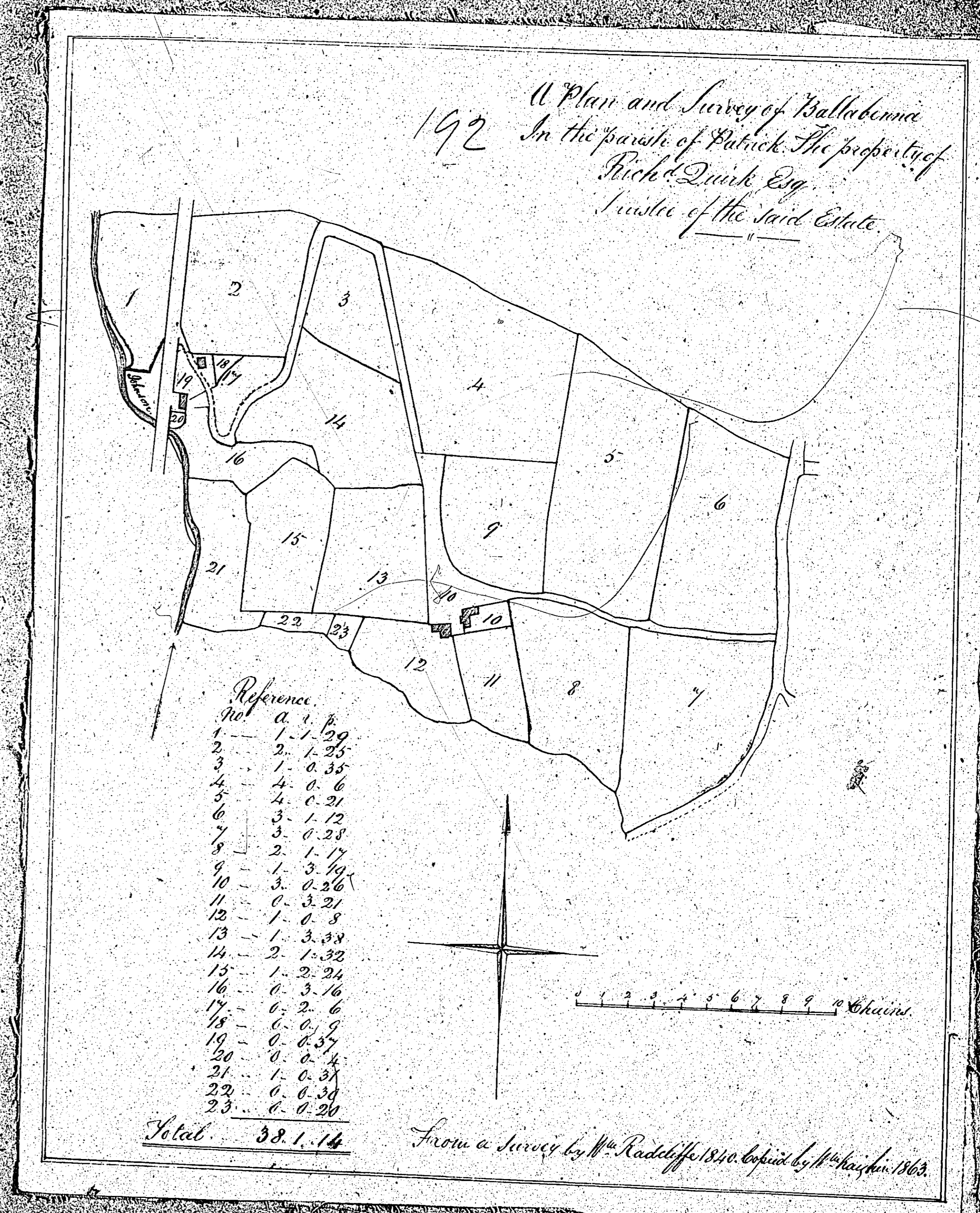
191

ISLE OF MAN GOVERNMENT: GENERAL REGISTRY

ASYLUM PLANS: PARISH OF PATRICK

Original coloured

1:23

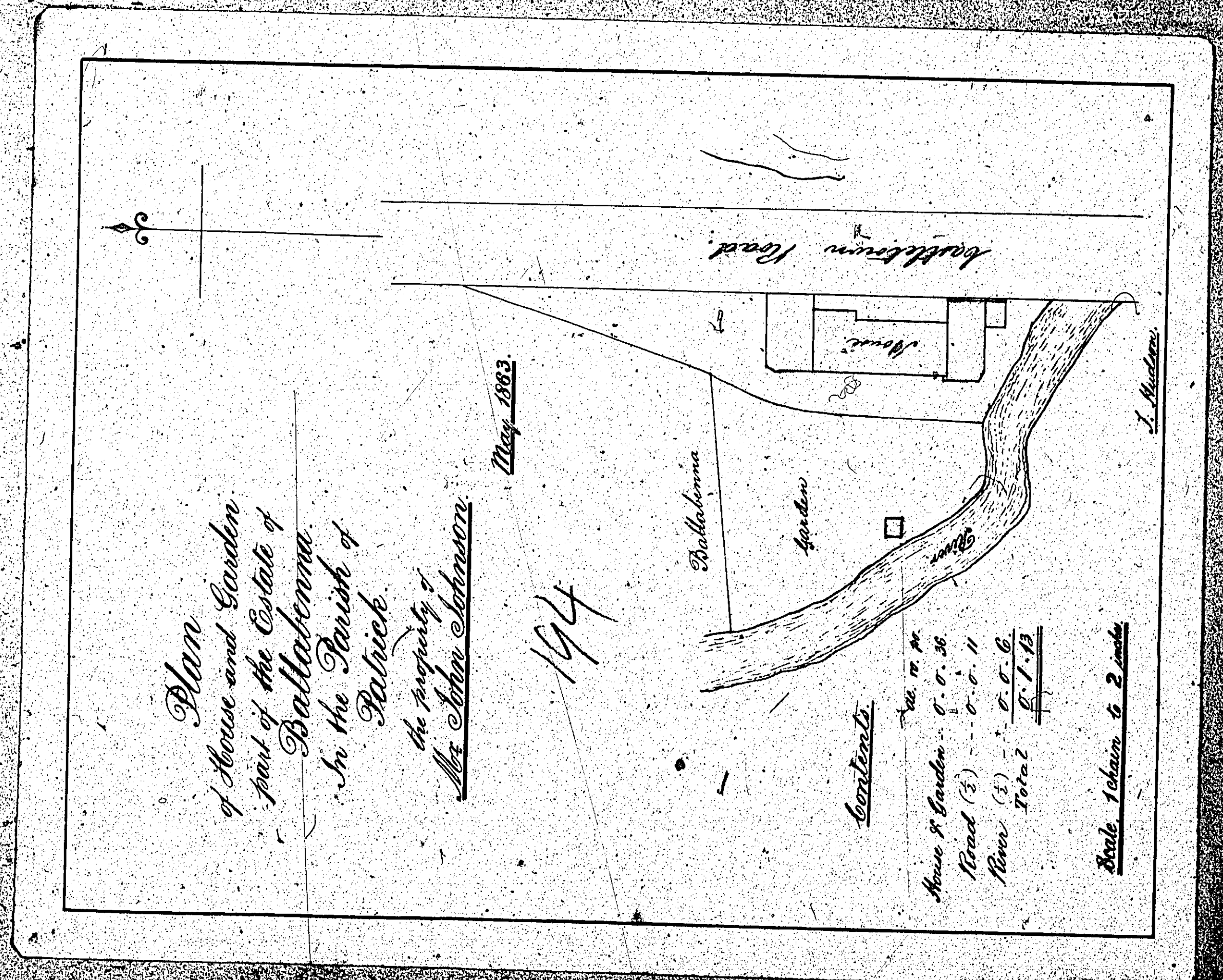
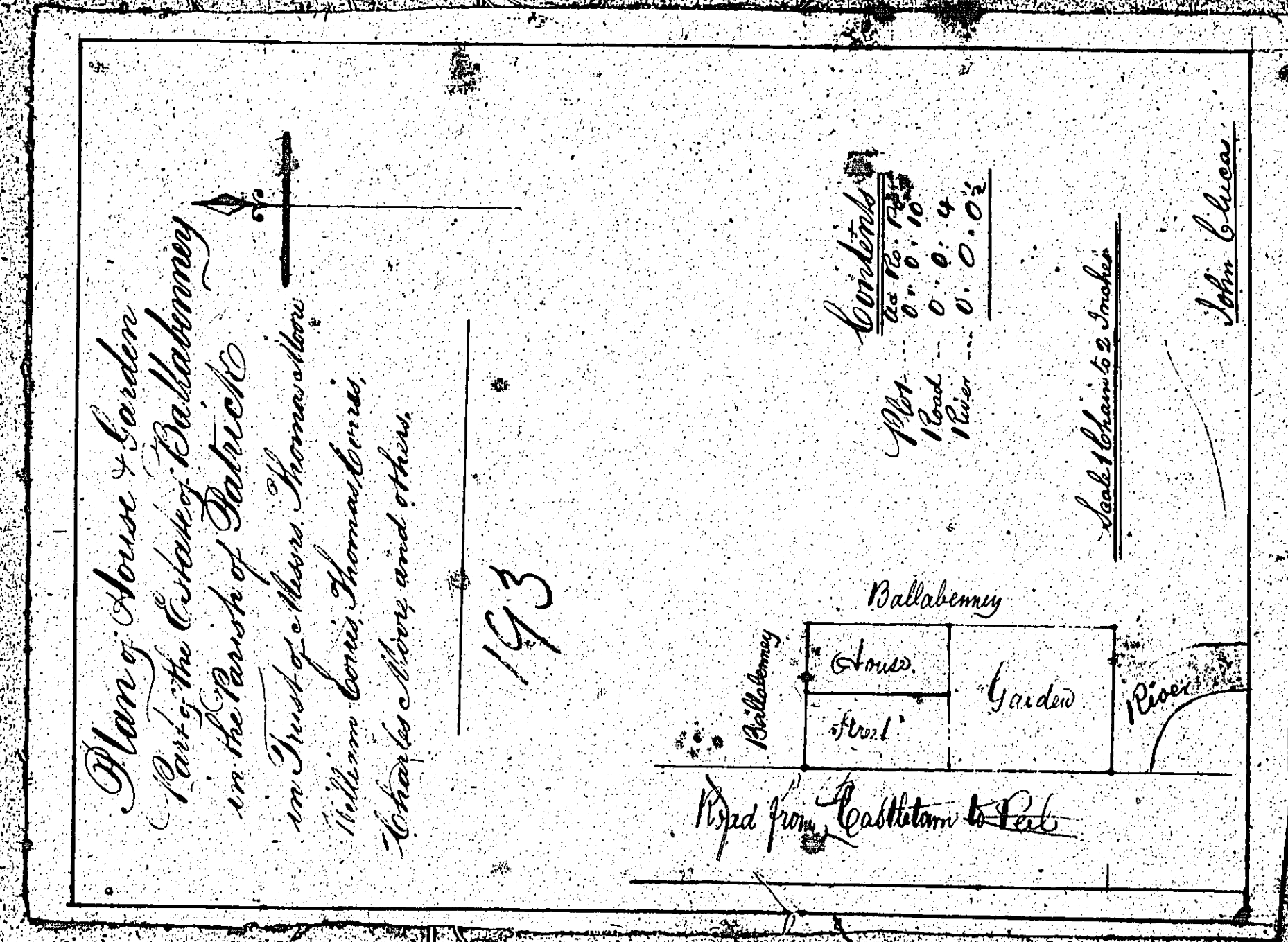


ISLE OF MAN GOVERNMENT: GENERAL REGISTRY

ASYLUM PLANS: PARISH OF PATRICK

Originals coloured

1:23



ISLE OF MAN GOVERNMENT: GENERAL REGISTRY

ASYLUM PLANS: PARISH OF PATRICK

Original coloured

1:23

