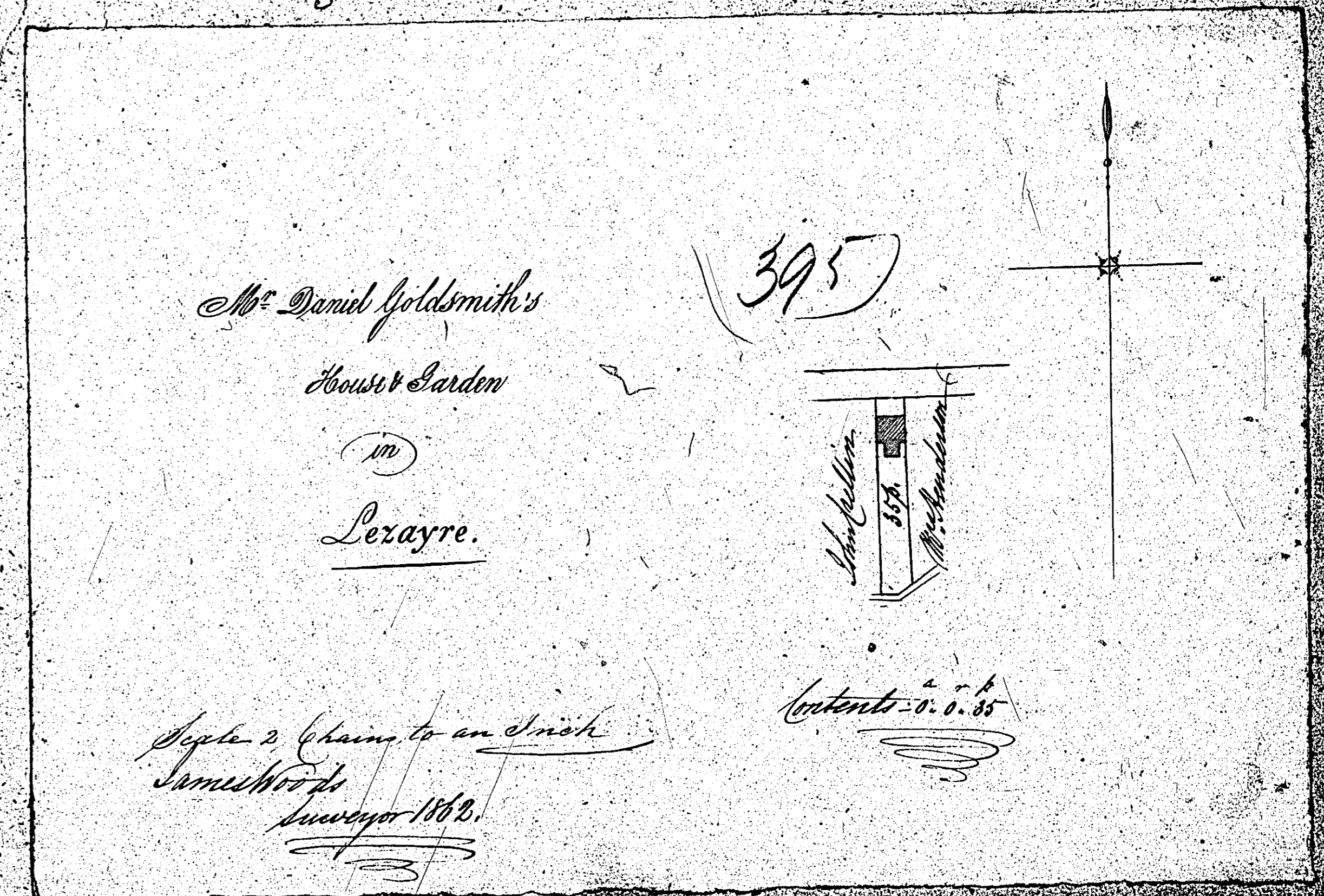
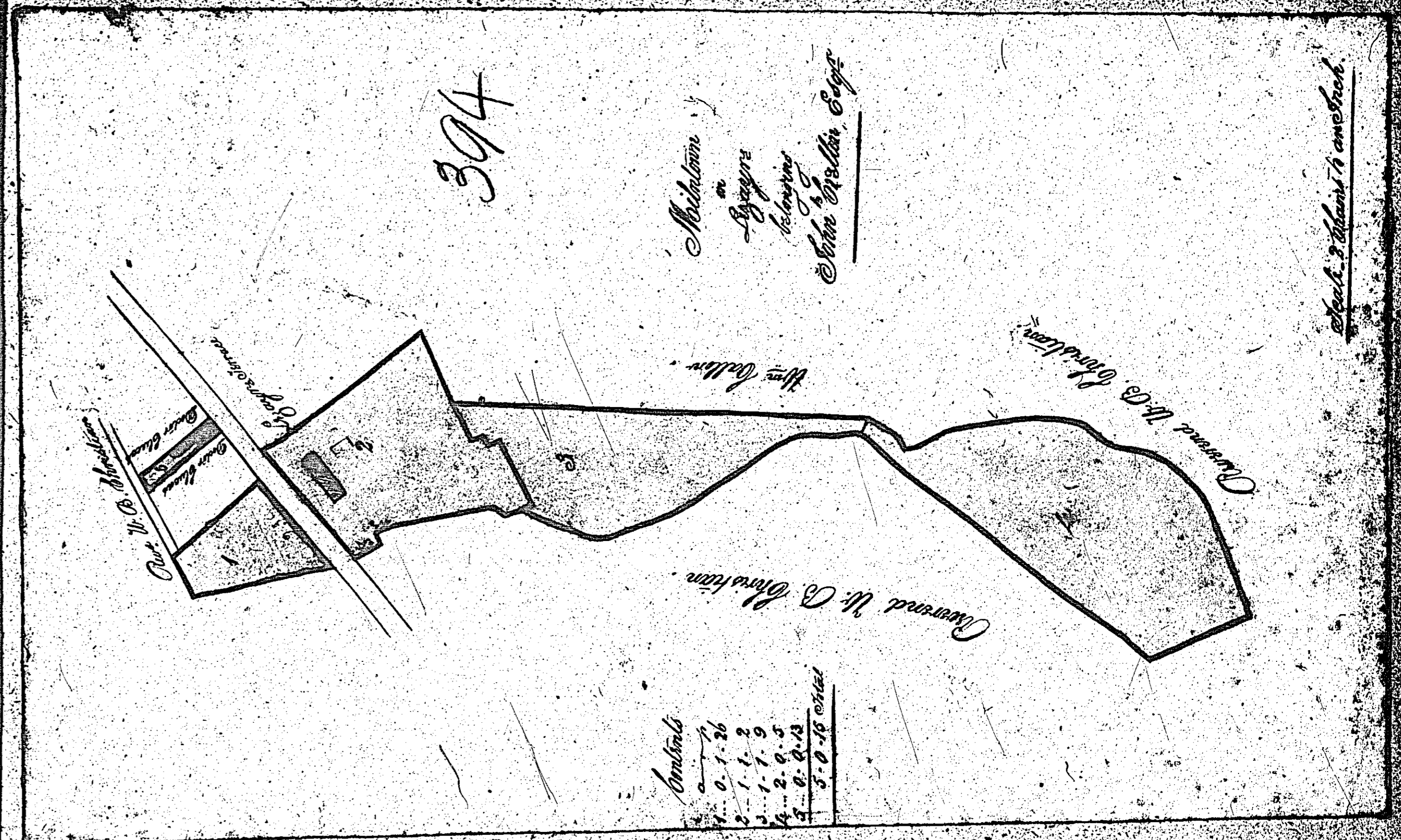


ISLE OF MAN GOVERNMENT: GENERAL REGISTRY

ASYLUM PLANS: PARISH OF LEZAYRE

1:23

- 394 Original coloured (decorative)
- 395 Original monotone



ISLE OF MAN GOVERNMENT: GENERAL REGISTRY

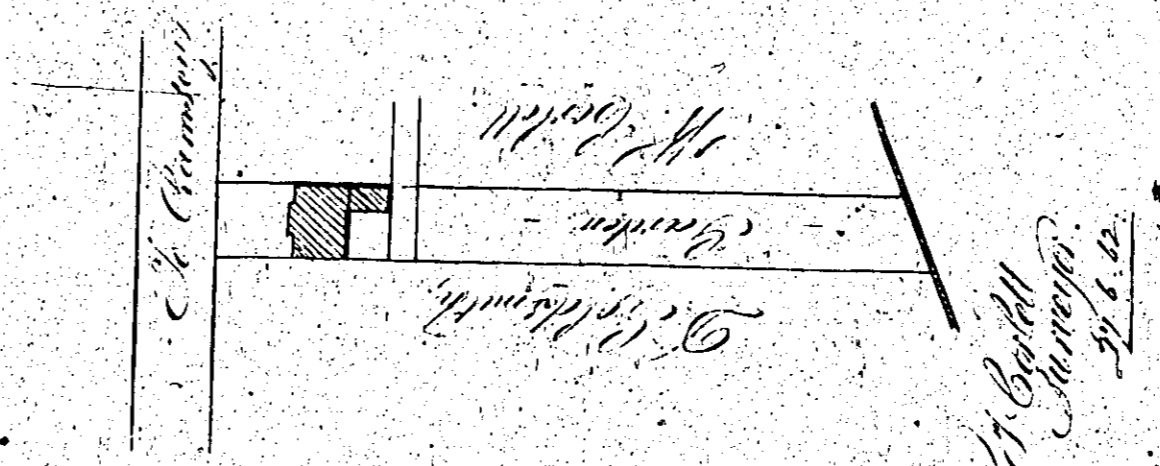
ASYLUM PLANS: PARISH OF LEZAYRE

Originals monotone

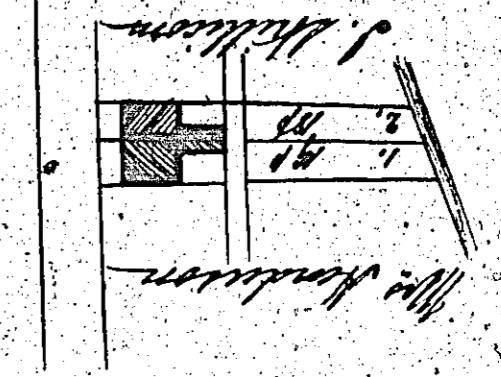
1:23

396

The Property of  
Mr. John & Henderson,  
Lezayre,  
1846.  
Each Part a Inch to the Chain.



397



Contract.  
1846.  
1847.  
1848.

Mr. Wm. Corlett

House & Garden

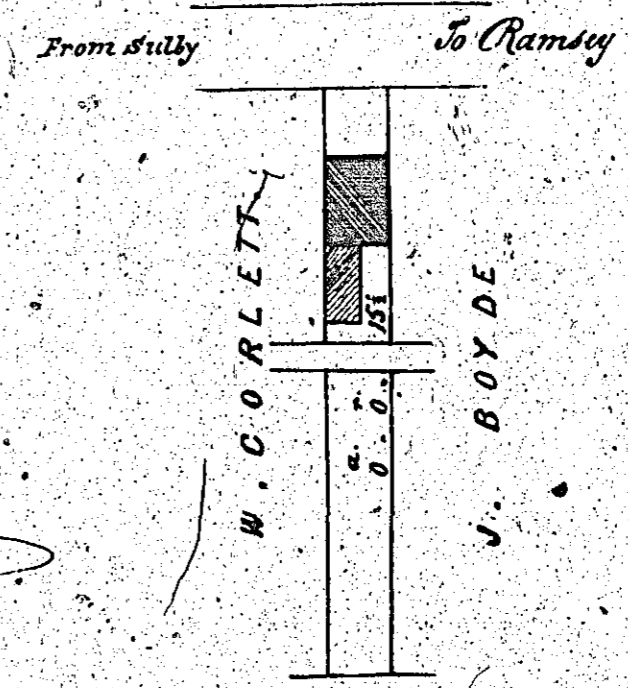
Lezayre

Each 2 Chains to an Inch

1846

398

Lezayre  
House & Garden  
in  
Lezayre Terrace  
belonging to  
Mr. John Skillicorn.



Contents 0.0.15

Scale

1 Chain to an Inch

1846

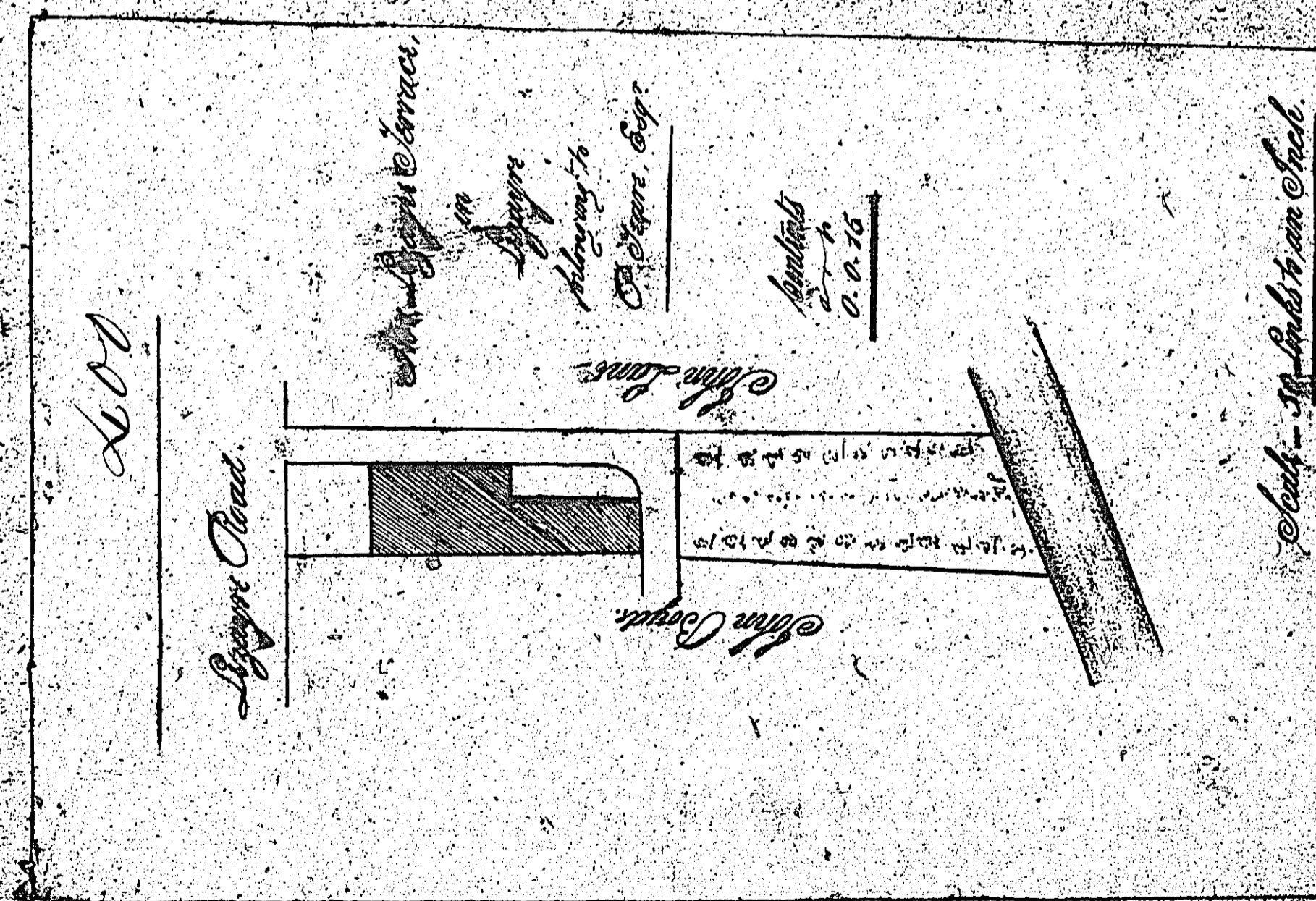
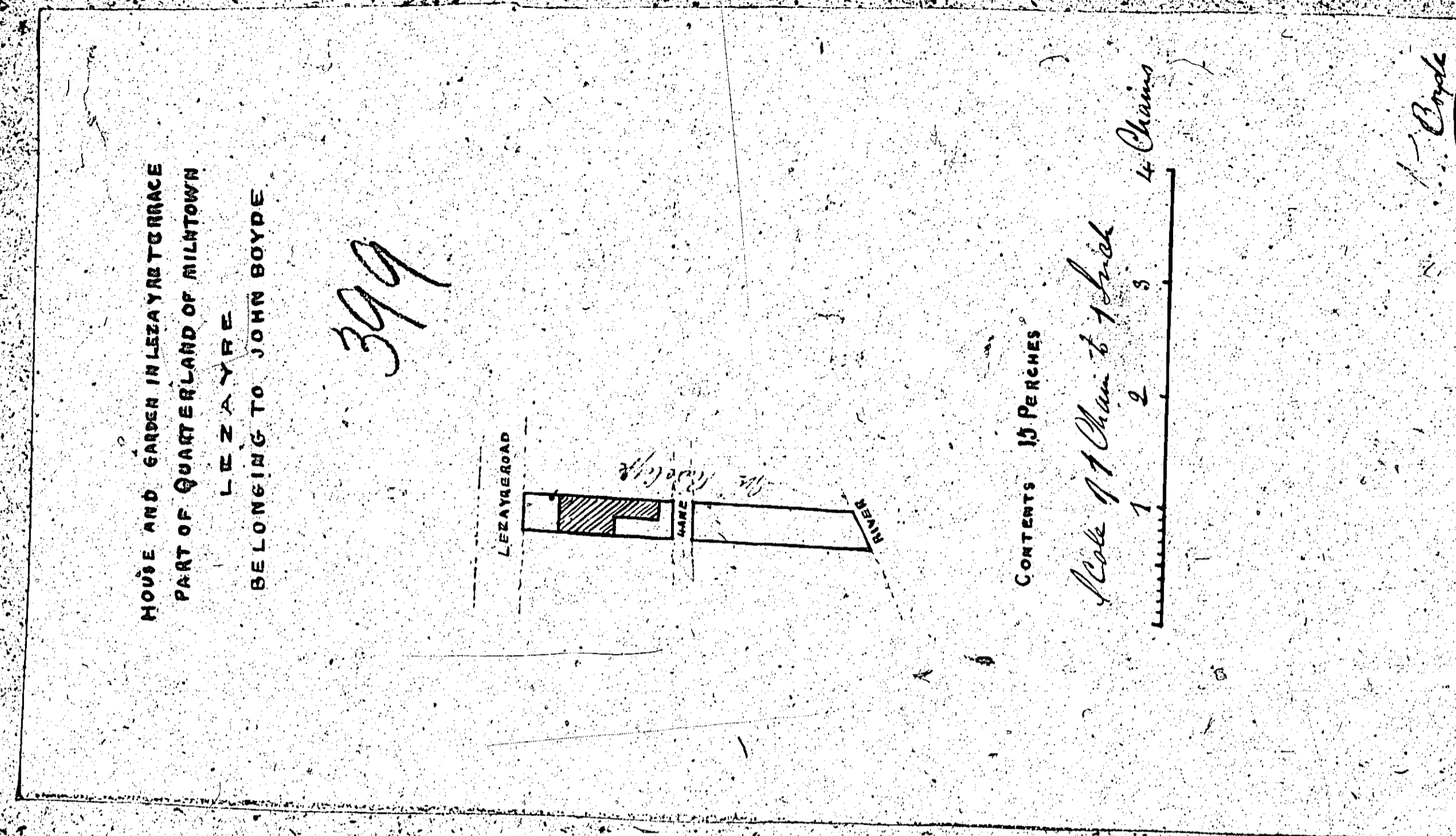
ISLE OF MAN GOVERNMENT: GENERAL REGISTRY

ASYLUM PLANS: PARISH OF LEZAYRE

1:23

399 Original monotone

400 Original coloured (decorative)

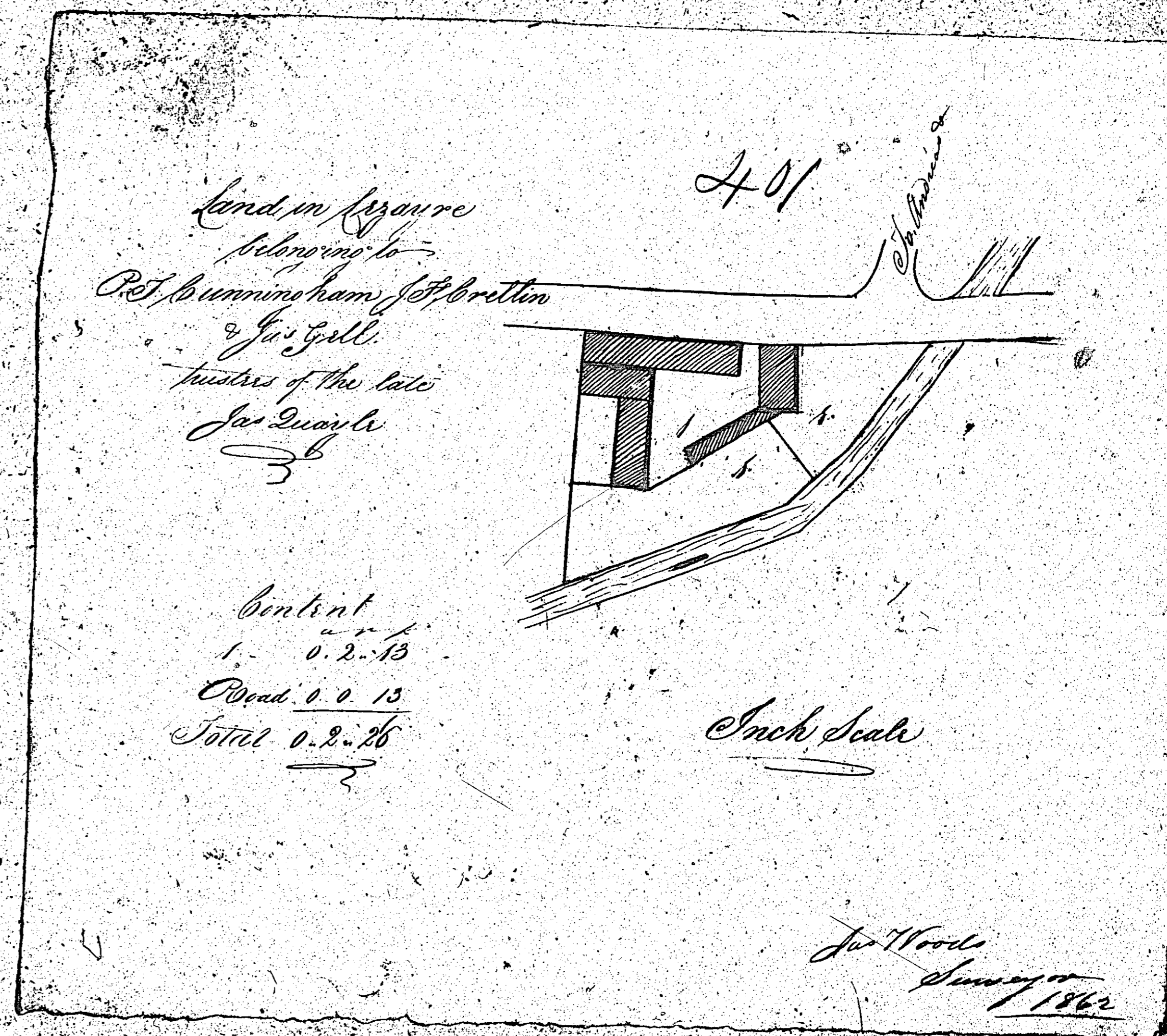


ISLE OF MAN GOVERNMENT: GENERAL REGISTRY,

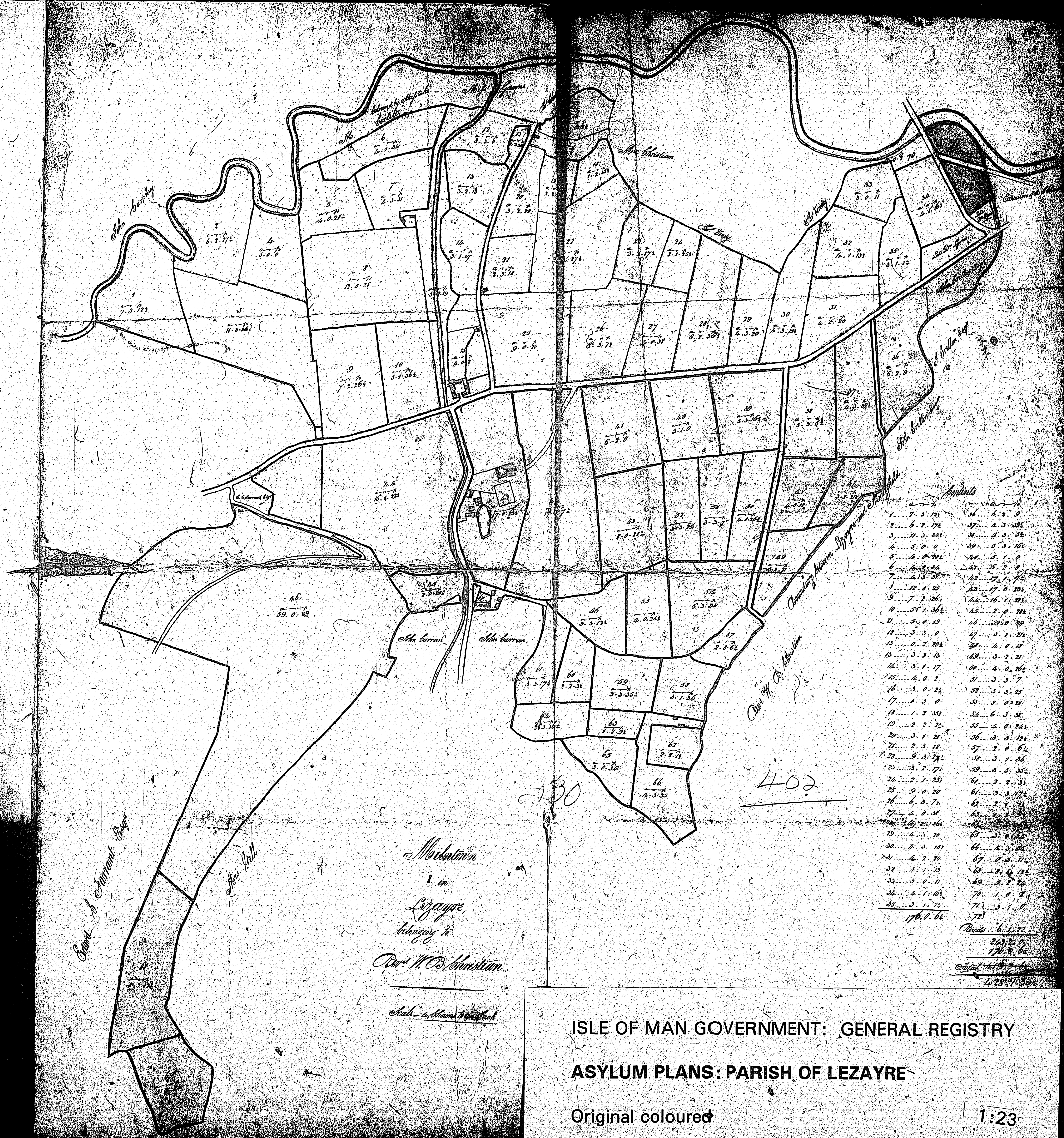
ASYLUM PLANS: PARISH OF LEZAYRE

Original monotone

1:23



The following two  
plans are both  
numbered  
402



ISLE OF MAN GOVERNMENT: GENERAL REGISTRY  
 ASYLUM PLANS: PARISH OF LEZAYRE

Original coloured

1:23