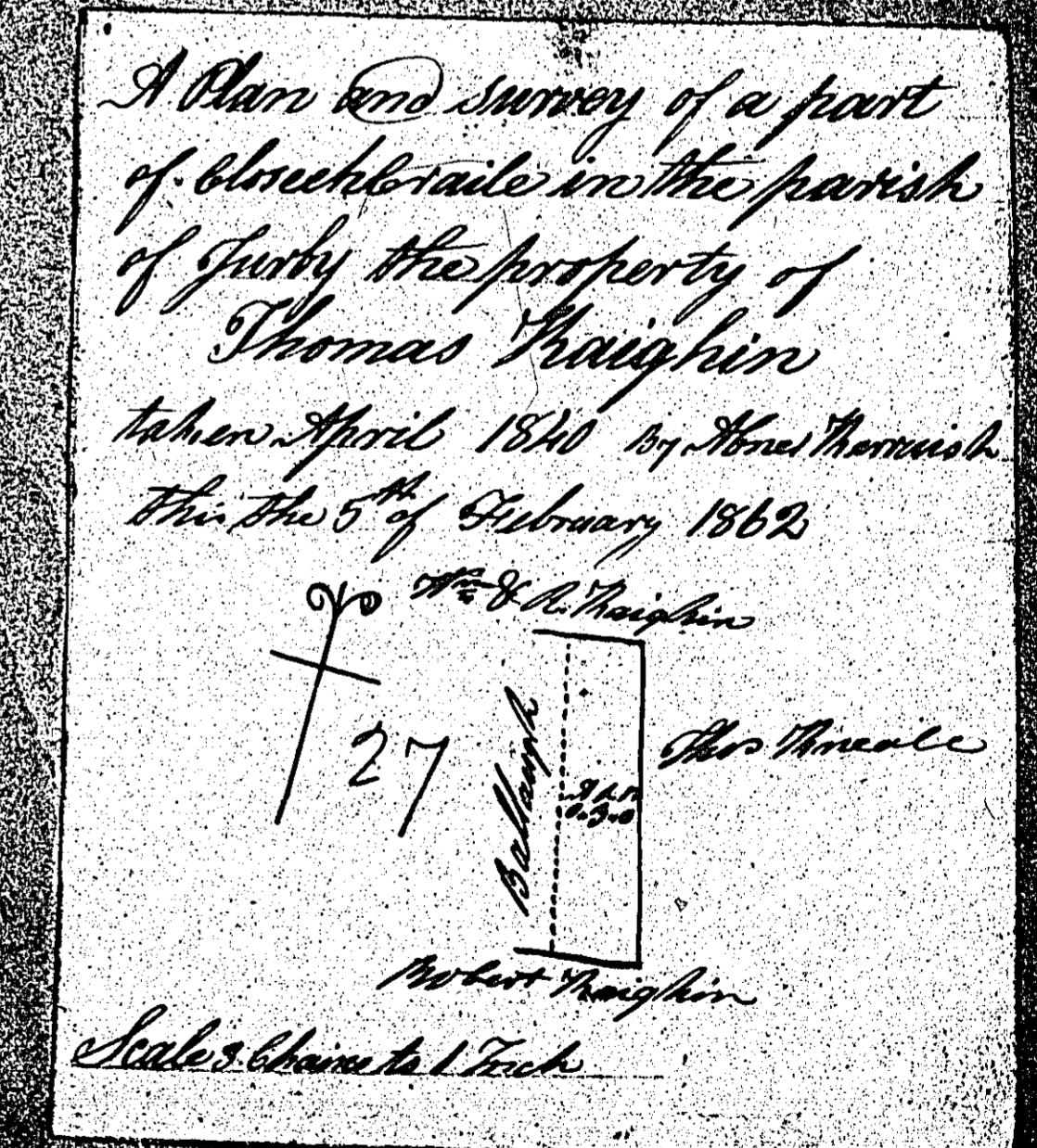
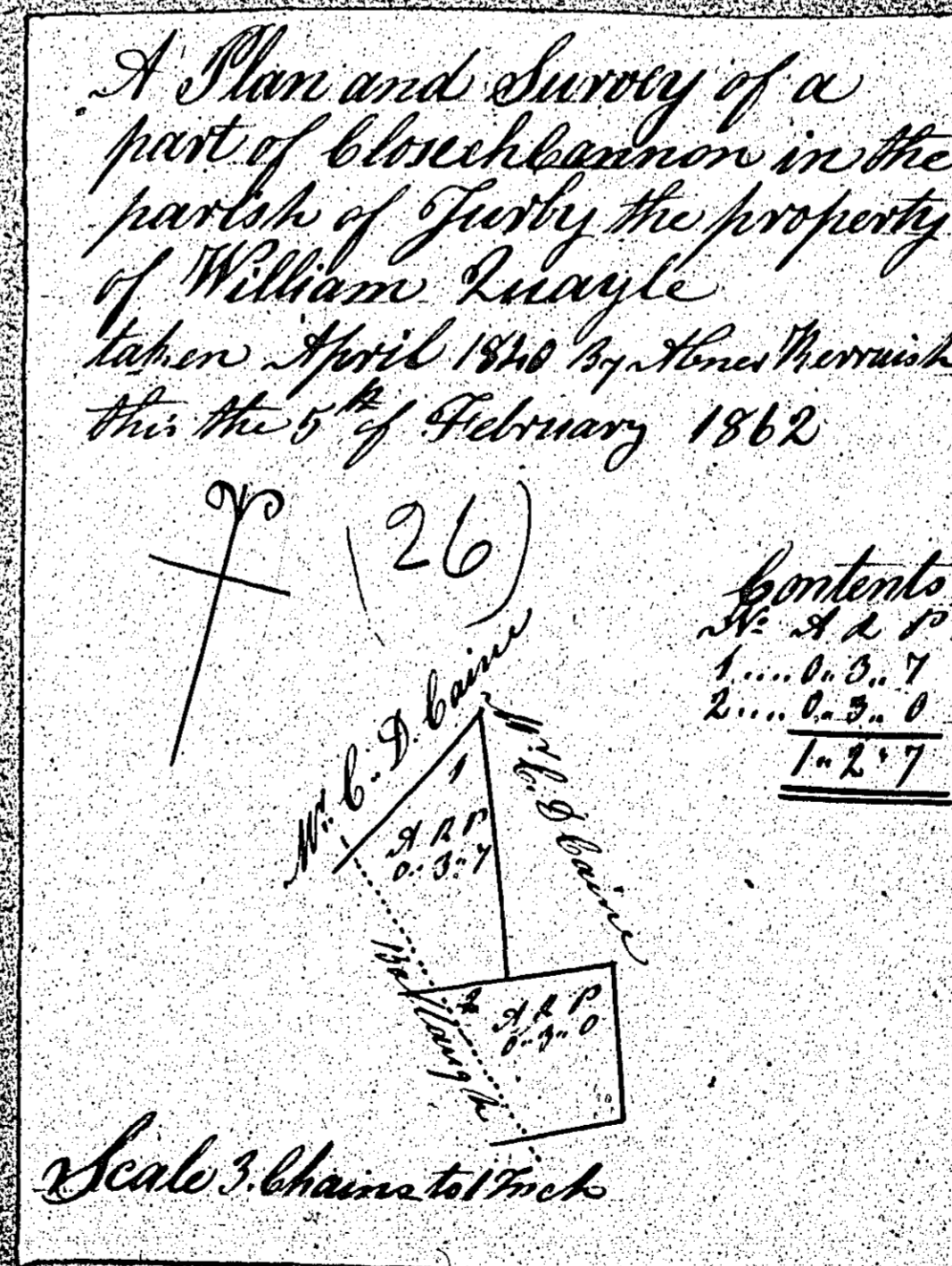
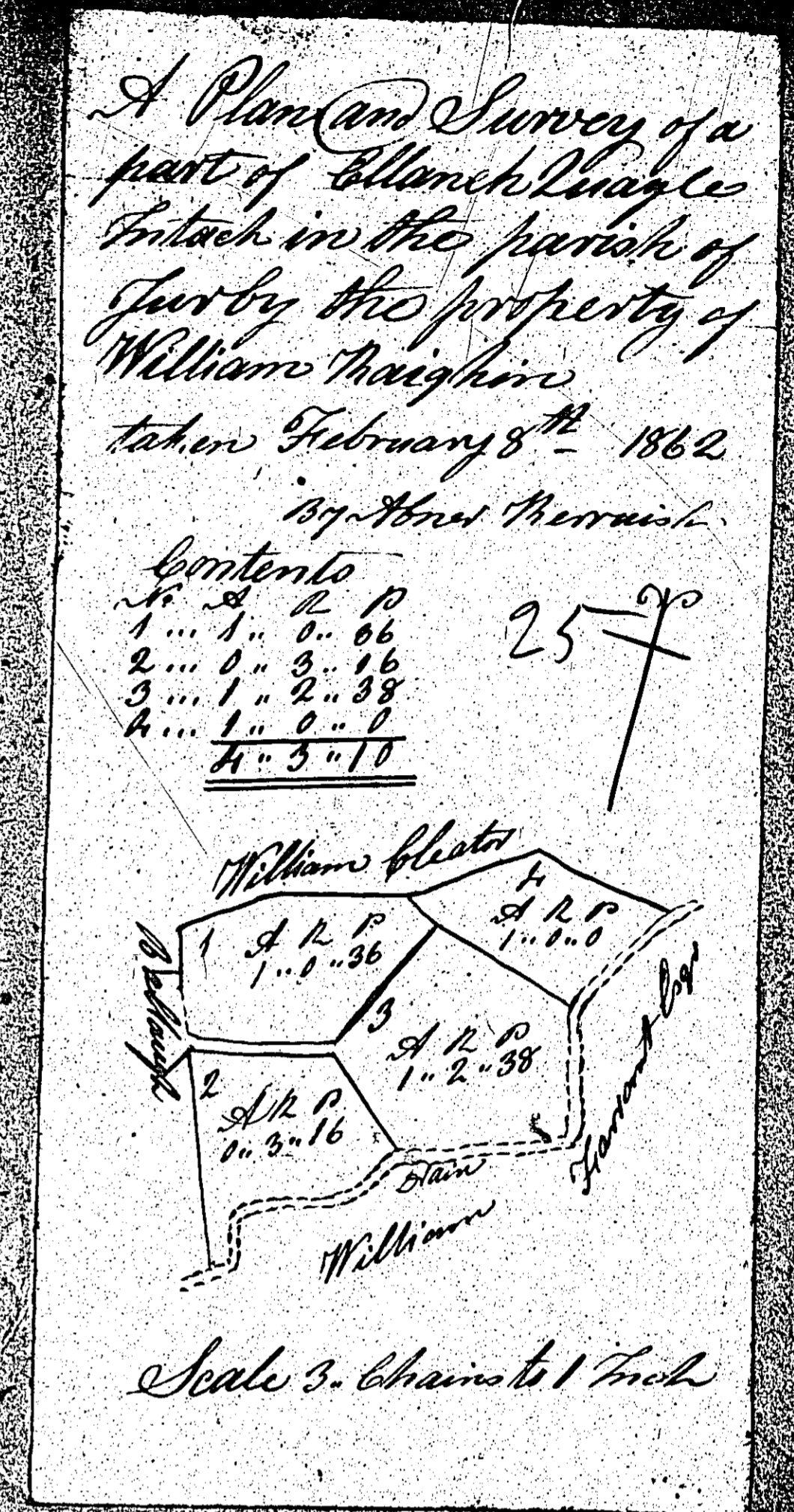
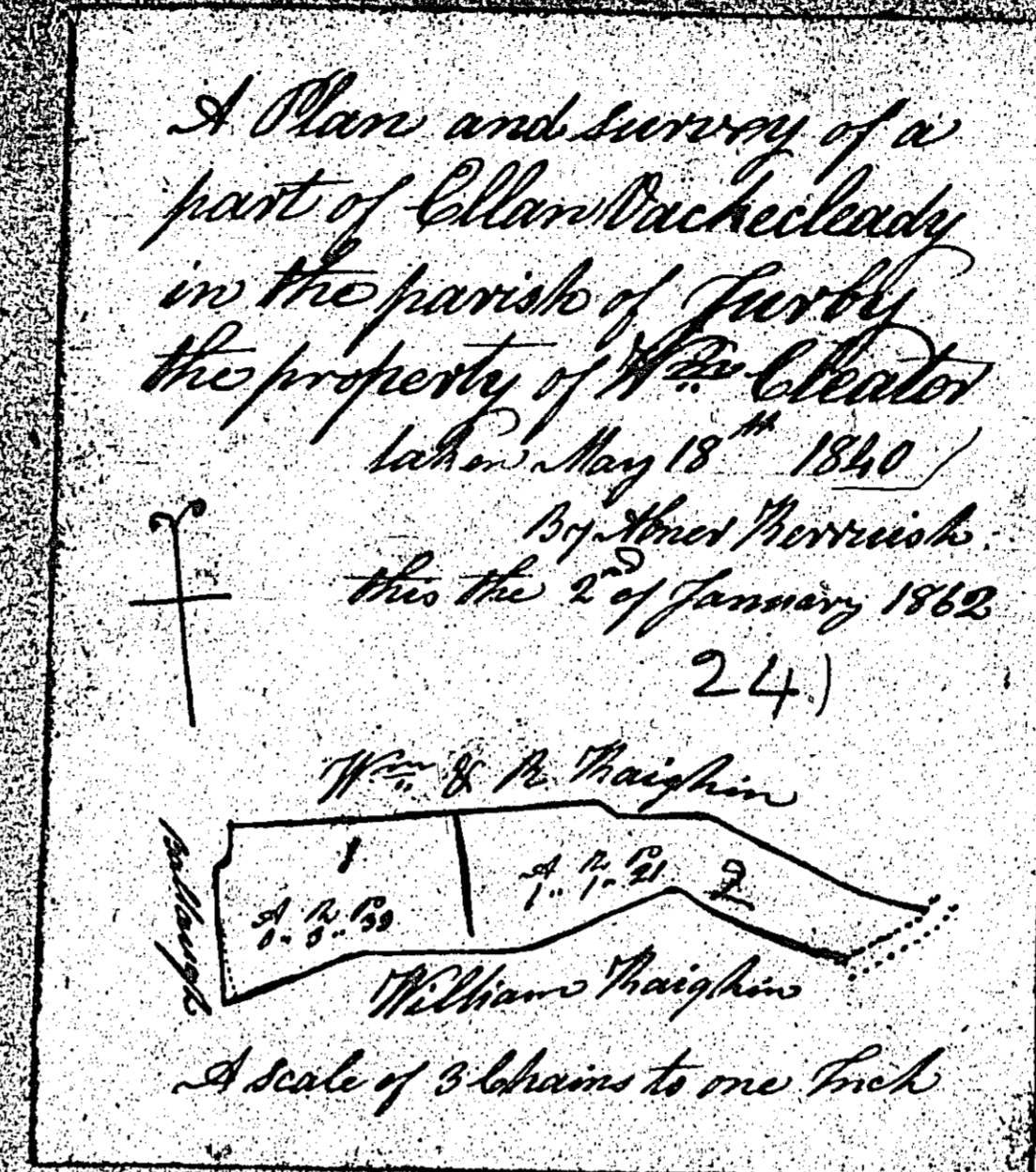


ISLE OF MAN GOVERNMENT: GENERAL REGISTRY

ASYLUM PLANS: PARISH OF JURBY

Originals monotone

1:23



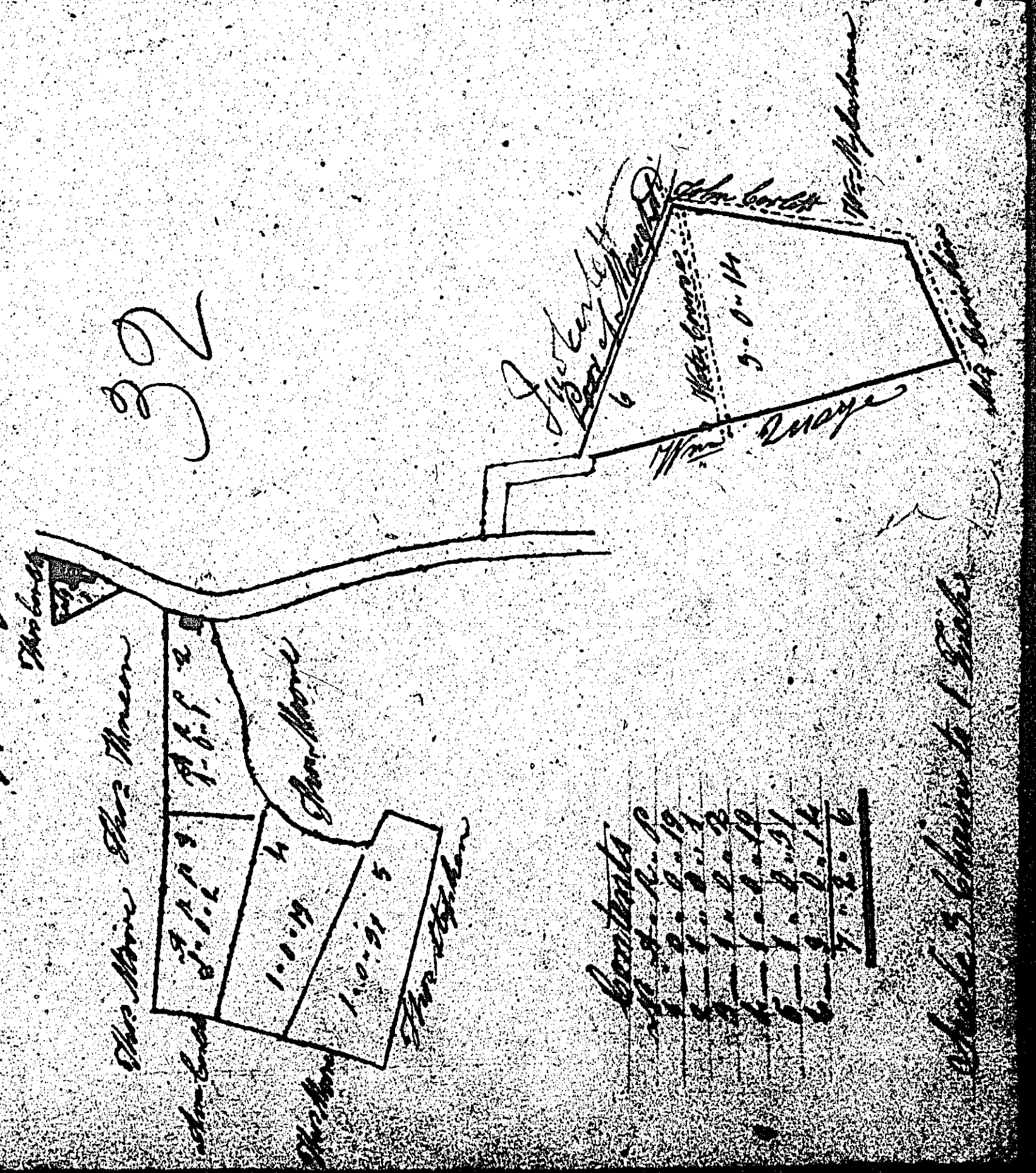
ISLE OF MAN GOVERNMENT: GENERAL REGISTRY

ASYLUM PLANS: PARISH OF JURBY

Originals monotone

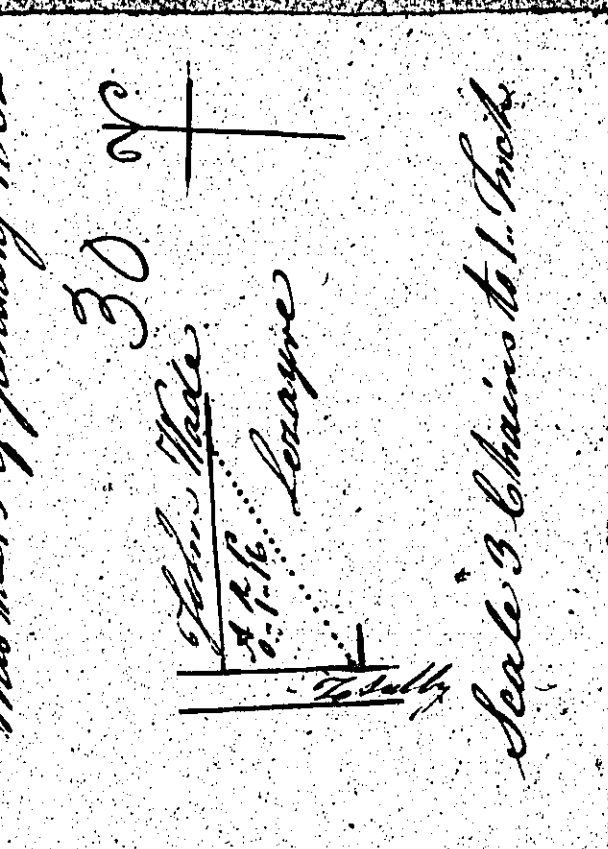
1:23

A Plan and Survey
of a part of the
Birkmearagh Island
in the parish of Jurby
the property of
Messrs. Phillips
taken June 1860
By John Munnick
this 27th of January 1862



Scale 3 Chains to 1 Inch

A Plan and Survey
of a part of Selby Enoge
in the parish of
Jurby the property
of Mary Garnitt
taken
By John Munnick
this 15th of January 1862



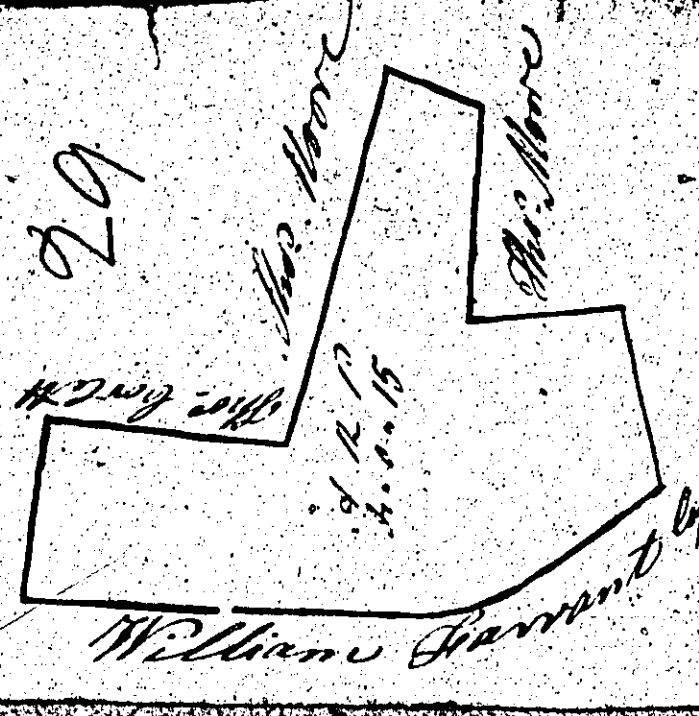
Scale 3 Chains to 1 Inch

A Plan and Survey of
a part of Selby Enoge
in the parish of Jurby
the property of
Thomas Munnick
taken 1860 By John Munnick
this 14th of April 1862
By John Munnick



Scale 3 Chains to 1 Inch

A Plan and Survey
of a parcel of land
in the parish of
Jurby the property
of John Munnick
taken March 1860
By John Munnick
this 20th of December 1861



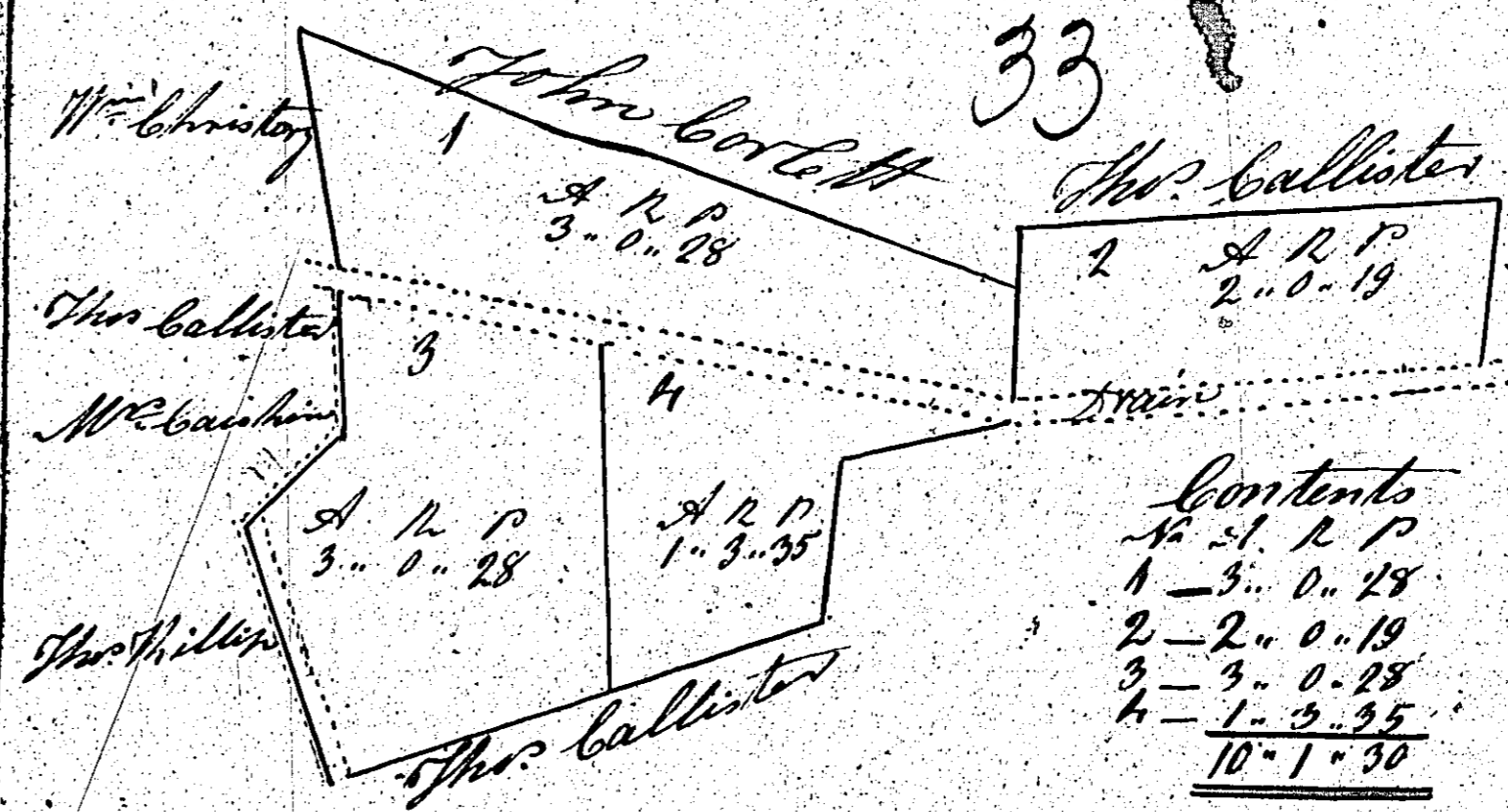
Scale 3 Chains to 1 Inch

ISLE OF MAN GOVERNMENT: GENERAL REGISTRY
 ASYLUM PLANS: PARISH OF JURBY

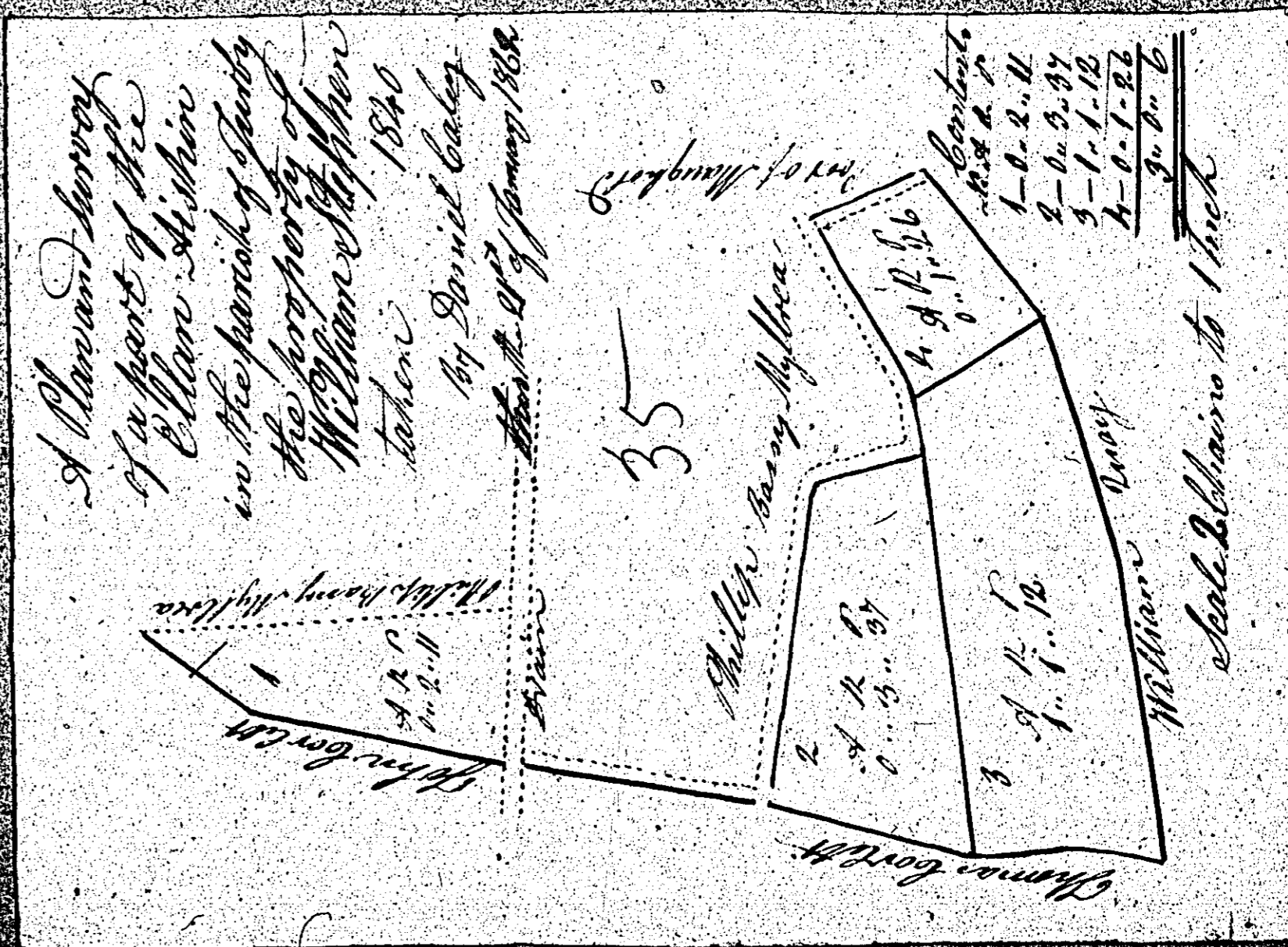
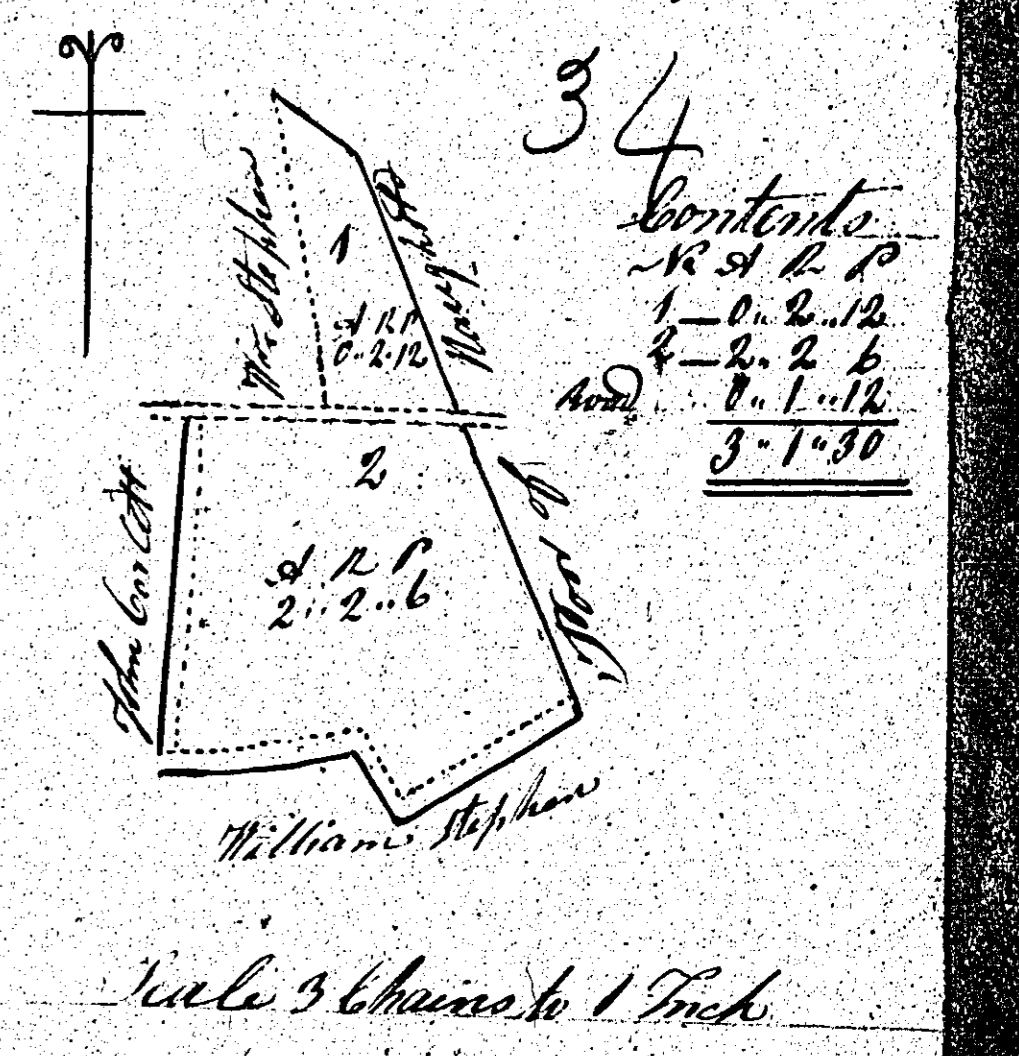
Originals monotone

1:23

A Plan and Survey of a
 parcel of Tintack called
 Closemy Greagh in the parish
 of Jurby the property of
 John Cortlett Andreas
 taken June 1840
 By Henry Merrish
 the 11th of January 1862



A Plan and Survey of
 a part of the Ellandishin
 in the parish of Jurby
 the property of
 Phillip Bassy Mylrea
 taken 5th October 1840
 By Henry Merrish
 the 20th January 1862

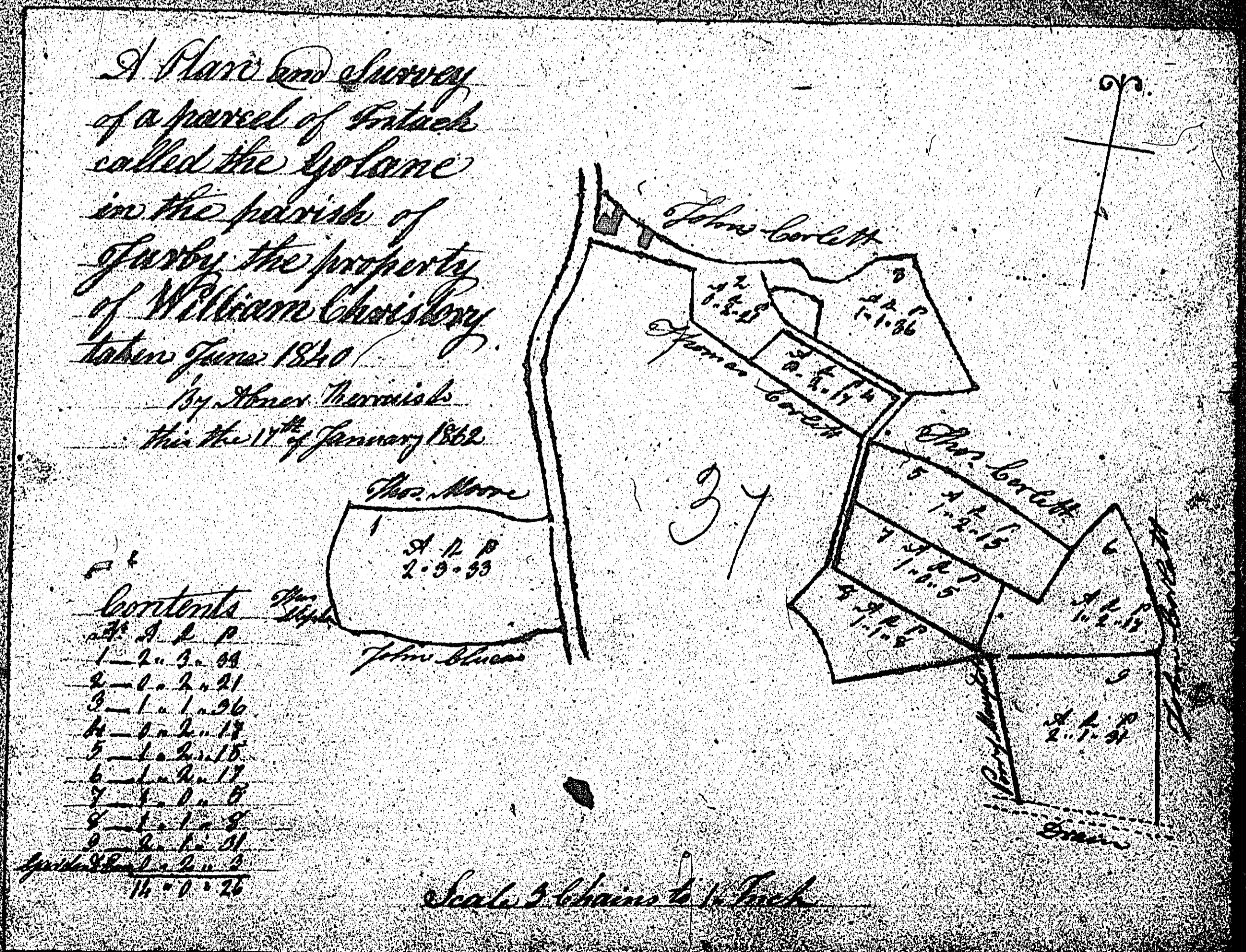
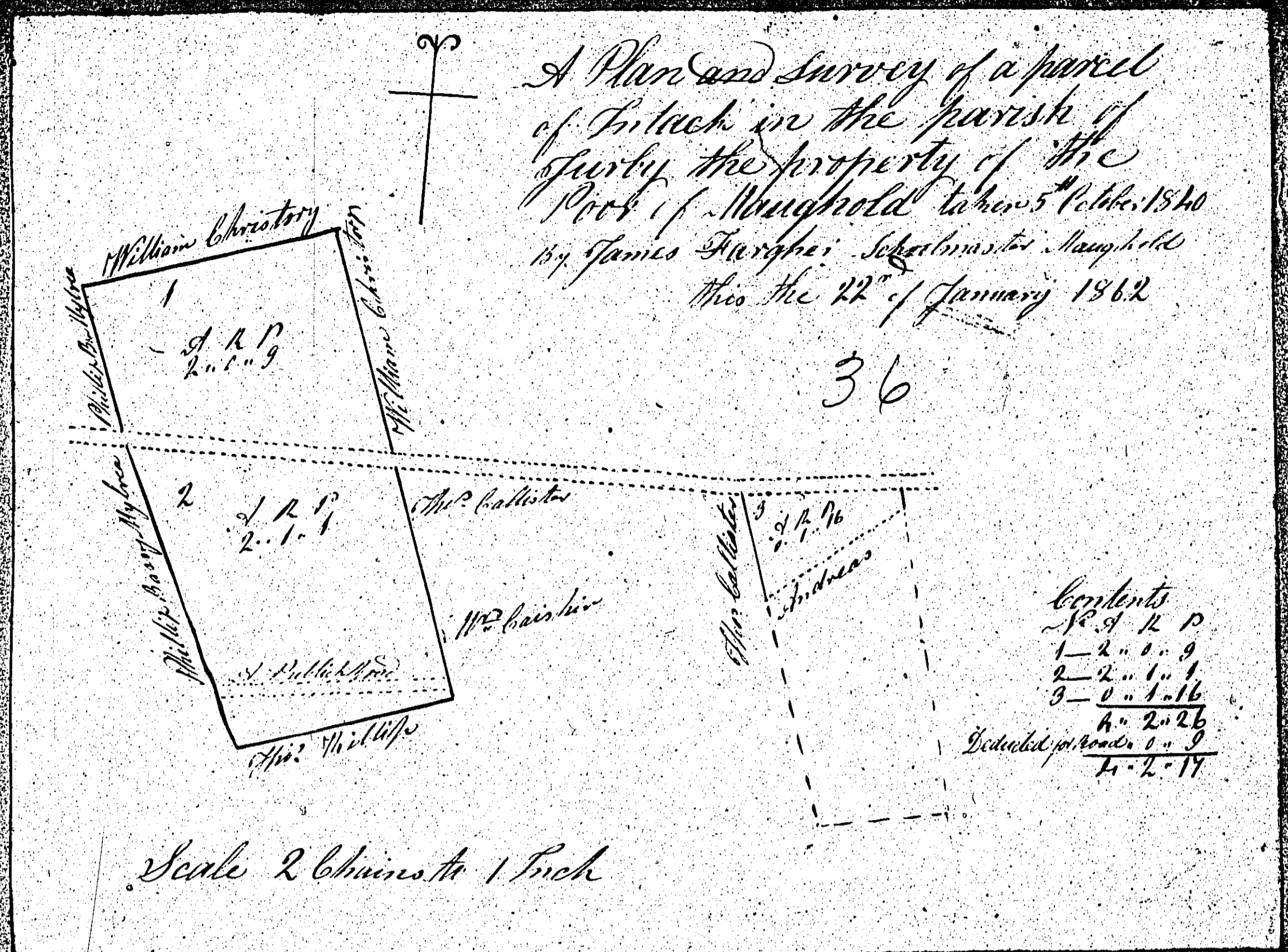


ISLE OF MAN GOVERNMENT: GENERAL REGISTRY

ASYLUM PLANS: PARISH OF JURBY

Originals monotone

1:23



ISLE OF MAN GOVERNMENT: GENERAL REGISTRY

ASYLUM PLANS: PARISH OF JURBY

Original monotone

1:23

